



MAIN LABOUR FORCE SURVEY RESULTS FOR THE FOURTH QUARTER OF 2013

Main labour market data for the fourth quarter of 2013

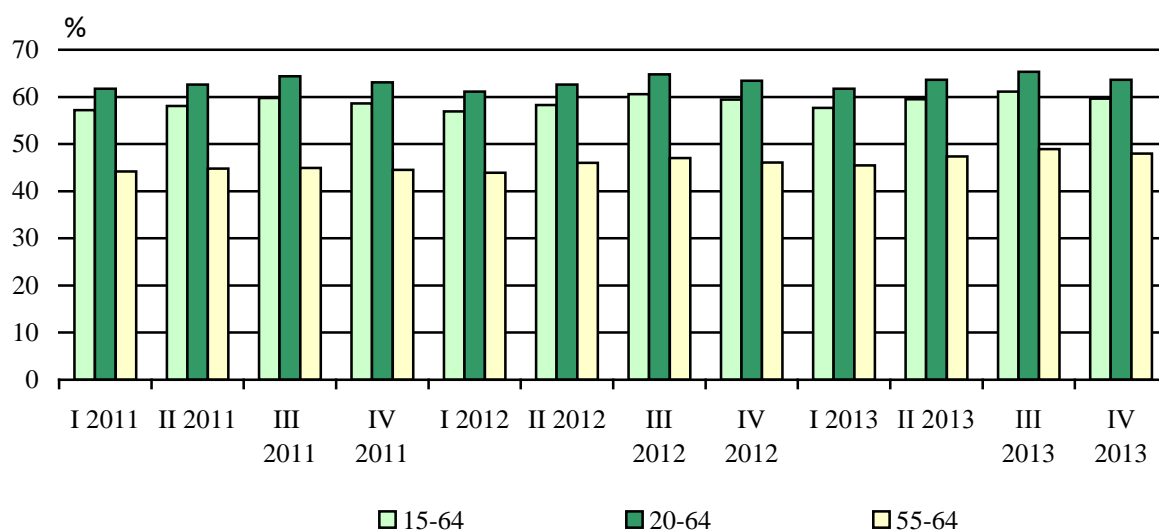
The activity rate of population aged 15 - 64 was 68.6%, by 0.7 percentage point higher in comparison with the fourth quarter of 2012.

The employment rate of population aged 15 - 64 was 59.6%, by 0.2 percentage points above its value for the corresponding quarter of the previous year.

The unemployment rate was 13.0%, by 0.6 percentage points higher compared to the same quarter of 2012.

Discouraged persons aged 15 - 64 were 188.0 thousand, representing 12.4% of the total number of inactive persons in the same age group (1 517.0 thousand).

Figure 1. Employment rate by age group and by quarter



Employment

In the fourth quarter of 2013 the total number of **employed persons aged 15 years and over** was 2 931.6 thousand and compared to the same quarter of 2012 decreased by 20.2 thousand. For the period concerned the relative share of employed in the population of the same age remained the same and was 47.0%. The share of employed men (out of male population aged 15 and over) increased by 0.3 percentage points, and that of women went down by 0.2 percentage points. From all persons in employment in the fourth quarter of 2013, 1 555.6 thousand (53.1%) were men and 1 376.0 thousand (46.9%) were women.

Employed persons who attained tertiary education were 902.7 thousand, representing 30.8% of all in employment, 1 729.8 thousand (59.0%) completed upper secondary education and 299.1 thousand (10.2%) had lower secondary education or less.

Of the total number of working population 4.3% (125.3 thousand) were employers, 7.8% (229.8 thousand) were workers (without employees), 87.2% (2 557.6 thousand) were employees and 0.6% (18.9 thousand) were unpaid family workers. In the private sector



worked 1 832.4 thousand (71.6%) of all employees and 725.2 thousand (28.4%) employees were in public sector.

For 5.0% of employees (for 4.5% of those in the private sector and for 6.4% of those in the public sector) the job was temporary. As compared with the fourth quarter of 2012 the share of employees having temporary employment was by 0.6 percentage points higher.

In services worked 1 860.6 thousand (63.5%) of all employed persons, in industry worked 876.4 thousand (29.9%), and 194.6 thousand (6.6%) were engaged in agriculture, forestry and fishing.

In the fourth quarter of 2013 the employment in particular age groups was as follows:

Employed persons aged 15 - 64 years were 2 880.2 thousand. The employment rate for this age group was 59.6%, 62.5% and 56.6% for men and women respectively.

The employment rate for age group 15 - 29 was 36.4%, 41.0% for men and 31.4% for women.

The employment rate for age group 20 - 64 was 63.6%, by 0.2 percentage point higher than in the same quarter of 2012. This rate was 66.8% for men and 60.4% for women.

Employed aged 55 - 64 years were 493.8 thousand, representing 48.0% of population in the same age group. In comparison with the fourth quarter of 2012 the employment rate (55 - 64 years) rose by 1.9 percentage points, by 1.6 percentage points for men and by 2.1 percentage points for women.

Unemployment

In the fourth quarter of 2013 the number of **unemployed people** was 439.8 thousand and the **unemployment rate** was 13.0%. In comparison with the fourth quarter of 2012 the number of unemployed was by 5.4% higher and the unemployment rate rose by 0.6 percentage points.

An increase of unemployment over the period concerned was observed for both men and women. The unemployment rate increased by 0.6 percentage points for men and by 0.8 percentage points for women, achieving 13.8% and 12.2% respectively. Of the total number of unemployed in the fourth quarter of 2013, 249.5 thousand (56.7%) were men and 190.3 thousand (43.3%) were women.

Among all unemployed 13.9% had completed tertiary level of education, 56.0% had upper secondary education level and 30.0% were with lower secondary or lower education level.

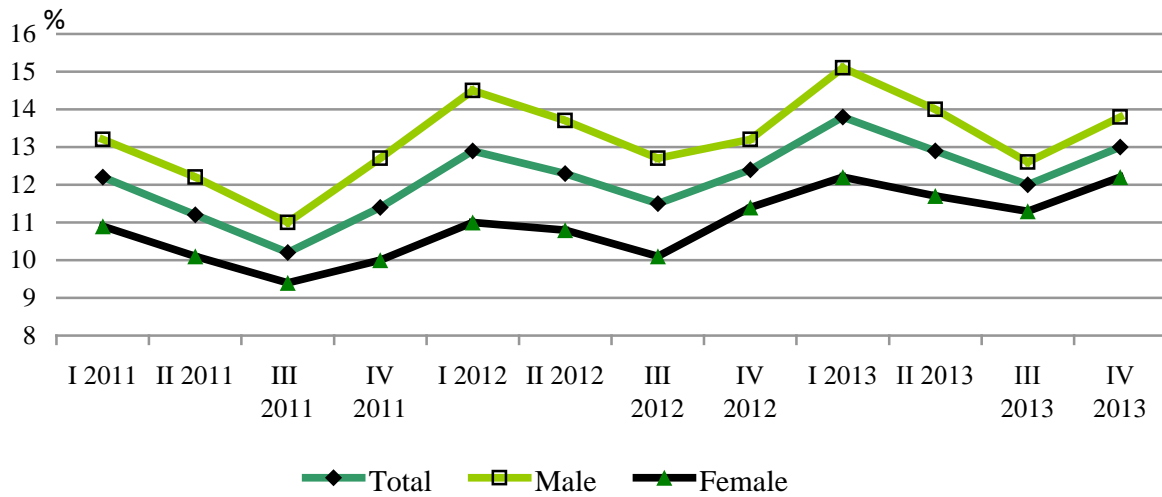
Long-term unemployed (for one year or over) were 263.7 thousand persons, accounting for 60.0% of all unemployed, and that proportion went up by 4.9 percentage points as compared to the fourth quarter one year ago. The long-term unemployment rate was 7.8%, being 1.0 percentage points higher for men compared to women (8.3% and 7.3% respectively).

The number of unemployed having previous work experience increased over the last year to 371.8 thousand (84.5% of all unemployed) in the fourth quarter of 2013, compared to 347.7 thousand (83.3%) in the same quarter of 2012. No significant change was observed for the unemployed looking for the first job.

In the fourth quarter of 2013 the **unemployment rate for the age group 15 - 29** was 22.2% (22.8% for men and 21.5% for women). That rate was by 1.5 percentage points higher than in the fourth quarter of 2012, equally affecting men and women.



Figure 2. Unemployment rate by sex and by quarter





Methodological notes

The Labour Force Survey (LFS) is a continuous sample survey providing quarterly and annual data on the economic activity of the population aged 15 and over. The survey covers non-institutional households.

Reference period - the characteristics of each interviewee refer to his/her status during a defined calendar week.

Economically active population (labour force) comprises all employed and unemployed persons.

Employed are persons aged 15 and over who during the reference period:

- performed some work for at least one hour for pay in cash or in kind or other income;
- did not work but had a job or an enterprise, a business from which they were temporarily absent due to illness, annual leave, full-paid maternity leave, parental leave, strike or another labour dispute, etc.

Unemployed are persons aged 15 to 74 who:

- did not work at all during the reference period;
- were actively seeking work within the preceding four weeks, including the reference one or have found a new job or business that is expected to start within 3 months following the reference period;
- were available to start working within two weeks following the reference period.

Long-term unemployed are persons who have been unemployed for one or more years.

Inactive population (persons not in the labour force) includes persons aged 15 and over who were neither employed, nor unemployed during the reference period.

Discouraged persons are persons not in the labour force who want to work but they do not actively look for a job, because they do not believe they will find one.

Activity rate - ratio between the economically active population and the total population of the same age group.

Employment rate - ratio between the employed population and the total population of the same age group.

Unemployment rate - ratio between the unemployed persons and the economically active population.

Long-term unemployment rate - ratio between the long-term unemployed persons and the economically active population.

The distribution of the employed persons by economic sector is done in accordance with the Classification of Economic Activities - 2008.

For the weighting of the results of the survey for the fourth quarter of 2013 the current population estimates as of 30 September 2013 for the population living in non-institutional households were used.



Like all sample surveys data from the Labour Force Survey are subject to errors due to the sample (stochastic errors). The calculated relative standard errors for the main LFS indicators for the fourth quarter of 2013 are as follows:

- total number of employed - 1.3%;
- total number of unemployed - 3.3%;
- unemployment rate - 3.0%.

Because of the rounding of the figures some of the totals (rows and columns) are not equal to the sum of the components.

More detailed data from the Labour Force Survey could be found on the NSI website <http://www.nsi.bg/en>, section “Labour Market”, Labour Force Survey.



Appendix

Table 1

Main labour market indicators, fourth quarter of 2012 and 2013

	Fourth quarter 2012	Fourth quarter 2013	Change (Fourth quarter 2013 minus Fourth quarter 2012)
Total			
Activity rate (15 - 64) - %	67.9	68.6	0.7
Employed persons aged 15 and over - thousands	2951.8	2931.6	-20.2
Employed persons aged 15 - 64 - thousands	2909.9	2880.2	-29.7
Employed persons aged 15 - 24 - thousands	178.1	155.3	-22.8
Employed persons aged 15 - 29 - thousands	489.1	453.2	-35.9
Employed persons aged 20 - 64 - thousands	2894.3	2871.5	-22.8
Employed persons aged 55 - 64 - thousands	481.3	493.8	12.5
Employment rate (15 and over) - %	47.0	47.0	0.0
Employment rate (15 - 64) - %	59.4	59.6	0.2
Employment rate (15 - 24) - %	22.3	20.5	-1.8
Employment rate (15 - 29) - %	38.0	36.4	-1.6
Employment rate (20 - 64) - %	63.4	63.6	0.2
Employment rate (55 - 64) - %	46.1	48.0	1.9
Unemployed persons - total - thousands	417.3	439.8	22.5
Unemployed persons aged 15 - 64 - thousands	416.1	437.4	21.3
Unemployed persons aged 15 - 24 - thousands	70.8	61.7	-9.1
Unemployed persons aged 15 - 29 - thousands	127.8	129.6	1.8
Unemployment rate - %	12.4	13.0	0.6
Unemployment rate (15 - 64) - %	12.5	13.2	0.7
Unemployment rate (15 - 24) - %	28.5	28.4	-0.1
Unemployment rate (15 - 29) - %	20.7	22.2	1.5
Long-term unemployment rate - %	6.8	7.8	1.0
Discouraged persons - thousands	212.6	192.2	-20.4
Discouraged persons (15 - 64) - thousands	210.2	188.0	-22.2



Main labour market indicators, fourth quarter of 2012 and 2013

(Continued)

	Fourth quarter 2012	Fourth quarter 2013	Change (Fourth quarter 2013 minus Fourth quarter 2012)
Male			
Activity rate (15 - 64) - %	71.8	72.8	1.0
Employed persons aged 15 and over - thousands	1560.9	1555.6	-5.3
Employed persons aged 15 - 64 - thousands	1534.3	1522.6	-11.7
Employed persons aged 15 - 24 - thousands	107.8	91.7	-16.1
Employed persons aged 15 - 29 - thousands	280.6	262.7	-17.9
Employed persons aged 20 - 64 - thousands	1525.2	1516.7	-8.5
Employed persons aged 55 - 64 - thousands	249.2	254.4	5.2
Employment rate (15 and over) - %	51.5	51.8	0.3
Employment rate (15 - 64) - %	62.2	62.5	0.3
Employment rate (15 - 24) - %	26.3	23.6	-2.7
Employment rate (15 - 29) - %	42.4	41.0	-1.4
Employment rate (20 - 64) - %	66.6	66.8	0.2
Employment rate (55 - 64) - %	50.7	52.3	1.6
Unemployed persons - total - thousands	237.8	249.5	11.7
Unemployed persons aged 15 - 64 - thousands	237.1	248.5	11.4
Unemployed persons aged 15 - 24 - thousands	41.9	39.7	-2.2
Unemployed persons aged 15 - 29 - thousands	75.8	77.4	1.6
Unemployment rate - %	13.2	13.8	0.6
Unemployment rate (15 - 64) - %	13.4	14.0	0.6
Unemployment rate (15 - 24) - %	28.0	30.2	2.2
Unemployment rate (15 - 29) - %	21.3	22.8	1.5
Long-term unemployment rate - %	7.7	8.3	0.6
Discouraged persons - thousands	120.4	105.2	-15.2
Discouraged persons (15 - 64) - thousands	119.3	103.3	-16.0

Main labour market indicators, fourth quarter of 2012 and 2013

(Continued and end)

	Fourth quarter 2012	Fourth quarter 2013	Change (Fourth quarter 2013 minus Fourth quarter 2012)
Female			
Activity rate (15 - 64) - %	63.8	64.4	0.6
Employed persons aged 15 and over - thousands	1390.9	1376.0	-14.9
Employed persons aged 15 - 64 - thousands	1375.7	1357.6	-18.1
Employed persons aged 15 - 24 - thousands	70.3	63.6	-6.7
Employed persons aged 15 - 29 - thousands	208.5	190.5	-18.0
Employed persons aged 20 - 64 - thousands	1369.1	1354.8	-14.3
Employed persons aged 55 - 64 - thousands	232.1	239.5	7.4
Employment rate (15 and over) - %	42.7	42.5	-0.2
Employment rate (15 - 64) - %	56.5	56.6	0.1
Employment rate (15 - 24) - %	18.0	17.2	-0.8
Employment rate (15 - 29) - %	33.4	31.4	-2.0
Employment rate (20 - 64) - %	60.3	60.4	0.1
Employment rate (55 - 64) - %	42.0	44.1	2.1
Unemployed persons - total - thousands	179.5	190.3	10.8
Unemployed persons aged 15 - 64 - thousands	178.9	188.9	10.0
Unemployed persons aged 15 - 24 - thousands	29.0	22.0	-7.0
Unemployed persons aged 15 - 29 - thousands	52.0	52.2	0.2
Unemployment rate - %	11.4	12.2	0.8
Unemployment rate (15 - 64) - %	11.5	12.2	0.7
Unemployment rate (15 - 24) - %	29.2	25.7	-3.5
Unemployment rate (15 - 29) - %	20.0	21.5	1.5
Long-term unemployment rate - %	5.8	7.3	1.5
Discouraged persons - thousands	92.2	87.0	-5.2
Discouraged persons (15 - 64) - thousands	90.8	84.7	-6.1