



MAIN LABOUR FORCE SURVEY RESULTS FOR THE SECOND QUARTER OF 2013

Main labour market results for the second quarter of 2013

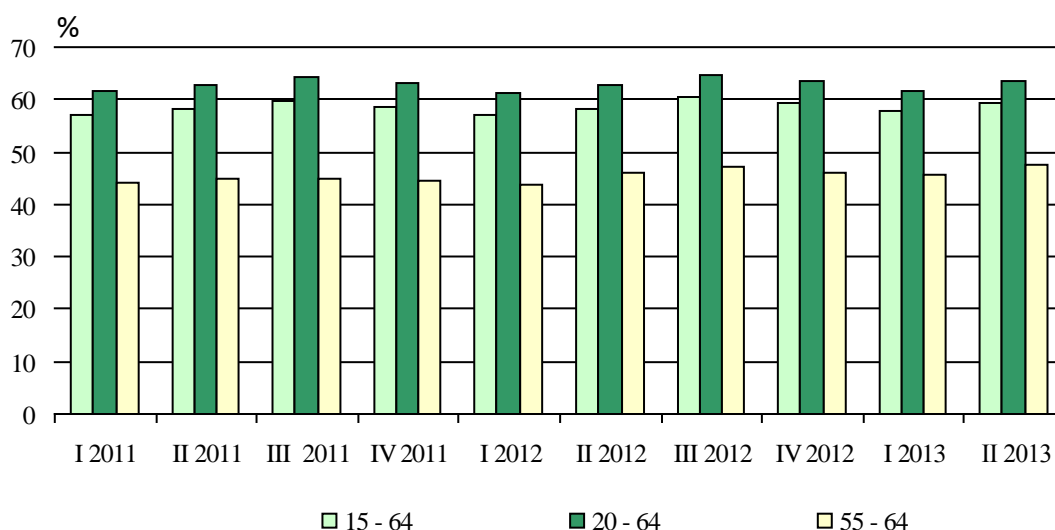
The activity rate of population aged 15 - 64 was 68.4%, by 1.8 percentage points higher in comparison with the second quarter of 2012.

The employment rate of population aged 15 - 64 was 59.5%, by 1.2 percentage points above its value for the corresponding quarter of the previous year.

The unemployment rate was 12.9%, by 0.6 percentage points higher compared to the same quarter of 2012.

Discouraged persons aged 15 - 64 were 215.5 thousand representing 14.0% of all inactive persons in the same age group (1 542.0 thousand).

Figure 1. Employment rate by age group and by quarter



Employment

In the second quarter of 2013 the total number of **employed persons aged 15 years and over** was 2 940.2 thousand representing 47.0% of population in the same age group. In comparison with the second quarter of 2012 the proportion of employed persons rose by 0.8 percentage points. From all persons in employment in the second quarter of 2013, 1 540.5 thousand (52.4%) were men and 1 399.7 thousand (47.6%) were women.

Of total number of working population 3.8% (111.8 thousand) were employers, 7.5% (219.7 thousand) were own account workers (without employees), 88.1% (2 589.8 thousand) were employees and 0.6% (18.9 thousand) were unpaid family workers. In the private sector worked 1 873.0 thousand (72.3%) of all employees and 716.8 thousand (27.7%) employees were in public sector.

For 6.1% of employees (for 5.5% of those in private sector and for 7.8% of those in public sector) the job was temporary. As compared with the second quarter of 2012 the share of employees having temporary employment increased by 1.3 percentage points.

In services worked 1 853.0 thousand (63.0%) of all employed persons, in industry worked 883.2 thousand (30.0%), and 204.0 thousand (6.9%) were engaged in agriculture, forestry and fishing.

In the second quarter of 2013 the employment in particular age groups was as follows:

Employed persons aged 15 - 64 years were 2 897.1 thousand. The employment rate for this age group was 59.5%, 61.7 and 57.1% for men and women respectively.

The employment rate for age group 15 - 29 was 36.5%, 39.8% for men and 33.0% for women.

The employment rate for age group 20 - 64 was 63.6%, by 1.0 percentage point higher than in the same quarter of 2012. This rate went up by 0.7 percentage points for men and by 1.2 percentage points for women, standing at 66.1 and 61.0% respectively.

Employed aged 55 - 64 years were 492.3 thousand, representing 47.4% of population in the same age group. In comparison with the second quarter of 2012 the employment rate (55 - 64 years) rose by 1.4 percentage points, by 0.5 percentage points for men and by 2.2 percentage points for women.

Unemployment

In the second quarter of 2013 **unemployed** were 437.3 thousand persons, of whom 251.7 thousand (57.6%) were men and 185.6 thousand (42.4%) were women. In comparison with the second quarter of 2012 the number of unemployed rose by 6.8%.

For the same period the **unemployment rate** increased by 0.6 percentage points and in the second quarter of 2013 was 12.9%. The rate went up by 0.3 percentage points for men and by 0.9 percentage points for women and reached 14.0 and 11.7% respectively.

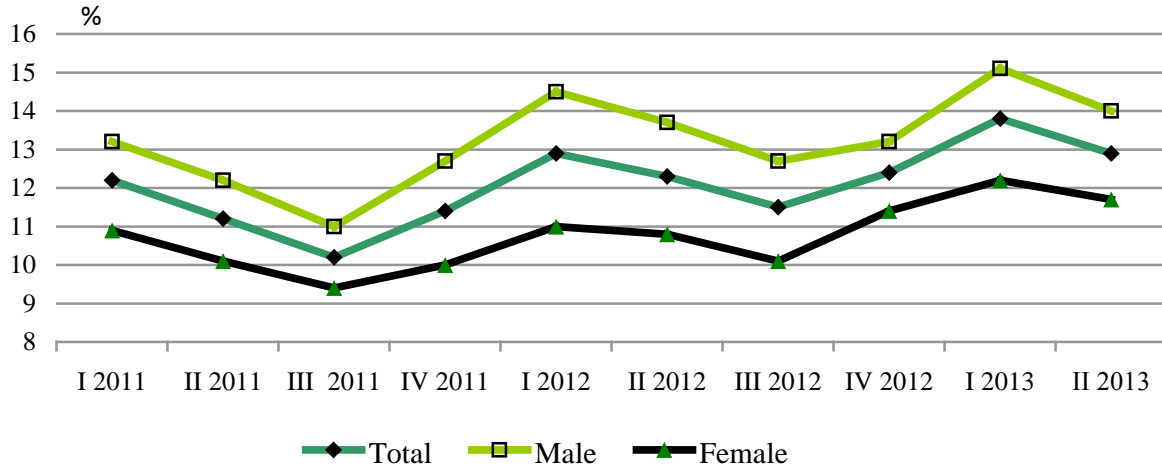
The number of long-term unemployed was 243.8 thousand, 55.8% of all unemployed, and compared to the second quarter of previous year their share remained almost the same. For the same period the long-term unemployment rate went up by 0.3 percentage points and reached 7.2%, respectively 8.0% for men and 6.3% for women.

In the second quarter of 2013 previous employment experience had 373.1 thousand (85.3%) of all unemployed persons, as their share went up by 2.6 percentage points compared to the same quarter of 2012. Unemployed, who were looking for their first job decreased by 9.6% and during the second quarter of 2013 reached 64.2 thousand.

The unemployment rate for the population aged 15 - 29 was 21.4% in the second quarter of 2013 (21.7% for men and 21.0% for women). In comparison with the second quarter of 2012 this rate grew up by 0.7 percentage points entirely due to the increase of female unemployment (by 3.0 percentage points). For men of the same age the rate went down by 1.0 percentage point.



Figure 2. Unemployment rate by sex and by quarter





Methodological notes

The Labour Force Survey (LFS) is a continuous sample survey providing quarterly and annual data on the economic activity of the population aged 15 and over. The survey covers non-institutional households.

Reference period - the characteristics of each interviewee refer to his/her status during a defined calendar week.

Economically active population (labour force) comprises all employed and unemployed persons.

Employed are persons aged 15 and over who during the reference period:

- performed some work for at least one hour for pay in cash or in kind or other income;
- did not work but had a job or an enterprise, a business from which they were temporarily absent due to illness, annual leave, full-paid maternity leave, parental leave, strike or another labour dispute, etc.

Unemployed are persons aged 15 to 74 who:

- did not work at all during the reference period;
- were actively seeking work within the preceding four weeks, including the reference one or have found a new job or business that is expected to start within 3 months following the reference period;
- were available to start working within two weeks following the reference period.

Long-term unemployed are persons who have been unemployed for one or more years.

Inactive population (persons not in the labour force) includes persons aged 15 and over who were neither employed, nor unemployed during the reference period.

Discouraged persons are persons not in the labour force who want to work but they do not actively look for a job, because they do not believe they will find one.

Activity rate - ratio between the economically active population and the total population of the same age group.

Employment rate - ratio between the employed population and the total population of the same age group.

Unemployment rate - ratio between the unemployed persons and the economically active population.

Long-term unemployment rate - ratio between the long-term unemployed persons and the economically active population.

The distribution of the employed persons by economic sector is done in accordance with the Classification of Economic Activities - 2008.

For the weighting of the results of the survey for the second quarter of 2013 the current population estimates as of 31 March 2013 for the population living in non-institutional households were used.



Like all sample surveys data from the labour force survey are subject of errors due to the sample (stochastic errors). The calculated relative standard errors for the main LFS indicators for the second quarter of 2013 are as follows:

- total number of employed - 1.3%;
- total number of unemployed - 3.3%;
- unemployment rate - 3.0%.

Because of the rounding of the figures some of the totals (rows and columns) are not equal to the sum of the components.

More detailed data from the Labour Force Survey could be found on the NSI website www.nsi.bg, section “Labour Market”, Labour Force Survey.



Annex

Table 1

Main labour market indicators, second quarter of 2012 and 2013

	Second quarter 2012	Second quarter 2013	Change (Second quarter 2013 minus Second quarter 2012)
Total			
Activity rate (15 - 64) - %	66.6	68.4	1.8
Employed persons aged 15 and over - thousands	2913.7	2940.2	26.5
Employed persons aged 15 - 64 - thousands	2875.4	2897.1	21.7
Employed persons aged 15 - 24 - thousands	170.7	163.5	-7.2
Employed persons aged 15 - 29 - thousands	476.3	463.8	-12.5
Employed persons aged 20 - 64 - thousands	2865.5	2887.5	22.0
Employed persons aged 55 - 64 - thousands	481.3	492.3	11.0
Employment rate (15 and over) - %	46.2	47.0	0.8
Employment rate (15 - 64) - %	58.3	59.5	1.2
Employment rate (15 - 24) - %	20.8	20.8	0.0
Employment rate (15 - 29) - %	36.4	36.5	0.1
Employment rate (20 - 64) - %	62.6	63.6	1.0
Employment rate (55 - 64) - %	46.0	47.4	1.4
Unemployed persons - total - thousands	409.5	437.3	27.8
Unemployed persons aged 15 - 64 - thousands	407.9	434.0	26.1
Unemployed persons aged 15 - 24 - thousands	67.7	65.9	-1.8
Unemployed persons aged 15 - 29 - thousands	124.5	126.1	1.6
Unemployment rate - %	12.3	12.9	0.6
Unemployment rate (15 - 64) - %	12.4	13.0	0.6
Unemployment rate (15 - 24) - %	28.4	28.7	0.3
Unemployment rate (15 - 29) - %	20.7	21.4	0.7
Long-term unemployment rate - %	6.9	7.2	0.3
Discouraged persons - thousands	238.7	217.8	-20.9
Discouraged persons (15 - 64) - thousands	236.8	215.5	-21.3



Main labour market indicators, second quarter of 2012 and 2013

(Continued)

	Second quarter 2012	Second quarter 2013	Change (Second quarter 2013 minus Second quarter 2012)
Male			
Activity rate (15 - 64) - %	70.5	71.9	1.4
Employed persons aged 15 and over - thousands	1528.7	1540.5	11.8
Employed persons aged 15 - 64 - thousands	1506.2	1513.8	7.6
Employed persons aged 15 - 24 - thousands	98.0	94.4	-3.6
Employed persons aged 15 - 29 - thousands	270.0	260.3	-9.7
Employed persons aged 20 - 64 - thousands	1502.6	1508.6	6.0
Employed persons aged 55 - 64 - thousands	254.3	255.3	1.0
Employment rate (15 and over) - %	50.3	51.1	0.8
Employment rate (15 - 64) - %	60.8	61.7	0.9
Employment rate (15 - 24) - %	23.3	23.4	0.1
Employment rate (15 - 29) - %	40.1	39.8	-0.3
Employment rate (20 - 64) - %	65.4	66.1	0.7
Employment rate (55 - 64) - %	51.6	52.1	0.5
Unemployed persons - total - thousands	242.7	251.7	9.0
Unemployed persons aged 15 - 64 - thousands	241.8	250.0	8.2
Unemployed persons aged 15 - 24 - thousands	44.1	40.9	-3.2
Unemployed persons aged 15 - 29 - thousands	79.2	72.1	-7.1
Unemployment rate - %	13.7	14.0	0.3
Unemployment rate (15 - 64) - %	13.8	14.2	0.4
Unemployment rate (15 - 24) - %	31.0	30.2	-0.8
Unemployment rate (15 - 29) - %	22.7	21.7	-1.0
Long-term unemployment rate - %	7.7	8.0	0.3
Discouraged persons - thousands	129.1	121.2	-7.9
Discouraged persons (15 - 64) - thousands	127.8	119.9	-7.9



Main labour market indicators, second quarter of 2012 and 2013

(Continued and end)

	Second quarter 2012	Second quarter 2013	Change (Second quarter 2013 minus Second quarter 2012)
Female			
Activity rate (15 - 64) - %	62.7	64.7	2.0
Employed persons aged 15 and over - thousands	1385.0	1399.7	14.7
Employed persons aged 15 - 64 - thousands	1369.2	1383.2	14.0
Employed persons aged 15 - 24 - thousands	72.7	69.1	-3.6
Employed persons aged 15 - 29 - thousands	206.3	203.5	-2.8
Employed persons aged 20 - 64 - thousands	1362.9	1378.9	16.0
Employed persons aged 55 - 64 - thousands	227.1	236.9	9.8
Employment rate (15 and over) - %	42.4	43.1	0.7
Employment rate (15 - 64) - %	55.9	57.1	1.2
Employment rate (15 - 24) - %	18.2	18.1	-0.1
Employment rate (15 - 29) - %	32.5	33.0	0.5
Employment rate (20 - 64) - %	59.8	61.0	1.2
Employment rate (55 - 64) - %	40.9	43.1	2.2
Unemployed persons - total - thousands	166.8	185.6	18.8
Unemployed persons aged 15 - 64 - thousands	166.1	184.1	18.0
Unemployed persons aged 15 - 24 - thousands	23.6	25.0	1.4
Unemployed persons aged 15 - 29 - thousands	45.4	54.0	8.6
Unemployment rate - %	10.8	11.7	0.9
Unemployment rate (15 - 64) - %	10.8	11.7	0.9
Unemployment rate (15 - 24) - %	24.5	26.6	2.1
Unemployment rate (15 - 29) - %	18.0	21.0	3.0
Long-term unemployment rate - %	5.9	6.3	0.4
Discouraged persons - thousands	109.6	96.6	-13.0
Discouraged persons (15 - 64) - thousands	109.0	95.6	-13.4