



## MAIN LABOUR FORCE SURVEY RESULTS FOR THE FIRST QUARTER OF 2013

### Main labour market results for the first quarter of 2013

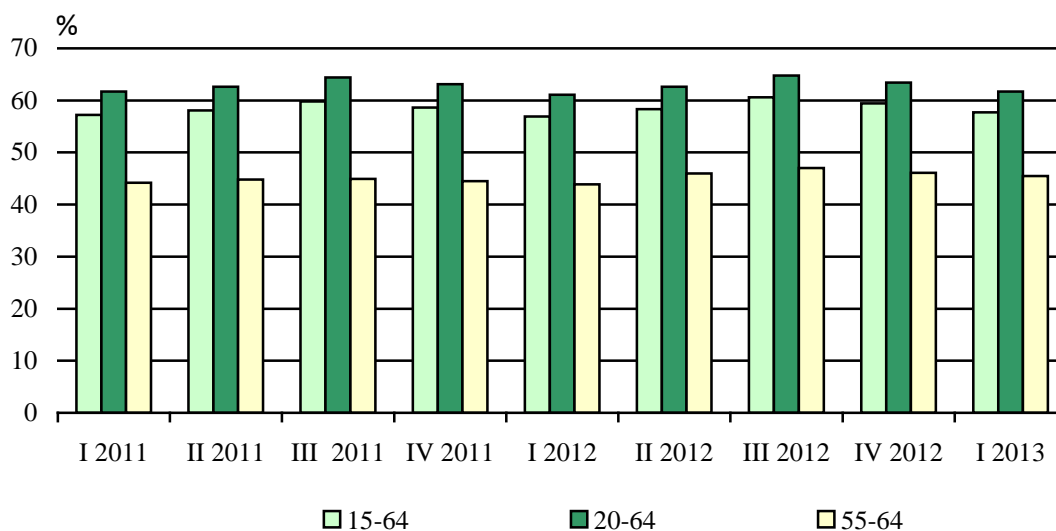
**The activity rate of population aged 15 - 64** was 67.0%, by 1.6 percentage points higher in comparison with the first quarter of 2012.

**The employment rate of population aged 15 - 64** was 57.7%, by 0.8 percentage points above its value for the corresponding quarter of the previous year.

**The unemployment rate** was 13.8%, by 0.9 percentage points higher compared to the same quarter of 2012.

**Discouraged persons aged 15 - 64** were 233.0 thousand, representing 14.5% of the total number of inactive persons in the same age group.

**Figure 1. Employment rate by age group and by quarter**



### Employment

In the first quarter of 2013 the **total number of employed persons aged 15 years and over** was 2 855.0 thousand, representing 45.6% of population in the same age group. The share of employed persons was by 0.5 percentage points higher in comparison with the first quarter of 2012, with increase of 0.7 percentage points for men and 0.2 percentage points for women. Among all persons in employment in the first quarter of 2013, 1 499.0 thousand (52.5%) were men and 1 356.0 thousand (47.5%) were women.

The share of employed having attained higher education was 30.7% of all employed, 59.3% of employed had completed upper secondary education and 10.0% were with lower education.

Of the total number of employed persons 3.8% (107.3 thousand) were employers, 6.9% (195.8 thousand) - self-employed without employees, 88.7% (2 532.9 thousand) were employees and 0.7% (19.0 thousand) - unpaid family workers. Of all employees 1 803.4 thousand (71.2%) worked in the private sector and 729.6 thousand (28.8%) worked in the public sector.



Temporary job had 4.6% of employees, 3.4% of employees in the private sector and 7.7% of employees in the public sector.

In service sector were engaged 1 805.8 thousand (63.3%) of all employed, in industry - 889.6 thousand (31.2%), and in agriculture, forestry and fishing - 159.6 thousand (5.6%).

In the first quarter of 2013 the employment in particular age groups was as follows:

**Employed persons aged 15 - 64** were 2 815.4 thousand. The employment rate of population in the same age group was 57.7% (60.1% for men and 55.3% for women).

**The employment rate for population aged 15 - 29** was 35.4%, 38.9% for men and 31.6% for women.

**The employment rate for population aged 20 - 64** was 61.7%, by 0.6 percentage points higher than in the same quarter of 2012. It increased by 0.8 percentage points for men and by 0.4 percentage points for women, reaching 64.3 and 59.1% respectively.

**Employed persons aged 55 - 64** were 473.7 thousand, accounting for 45.5% of population in the same age group. The employment rate of population aged 55 - 64 rose by 1.6 percentage points as compared to the first quarter of 2012.

## Unemployment

In the first quarter of 2013 **unemployed** were 456.4 thousand persons, of whom 267.5 thousand (58.6%) were men and 188.8 thousand (41.4%) were women. In comparison with the first quarter of 2012 the number of unemployed rose by 8.3%.

For the same period the **unemployment rate** increased by 0.9 percentage points and in the first quarter of 2013 was 13.8%. The rate went up by 0.6 percentage points for men and by 1.2 percentage points for women and reached 15.1 and 12.2% respectively.

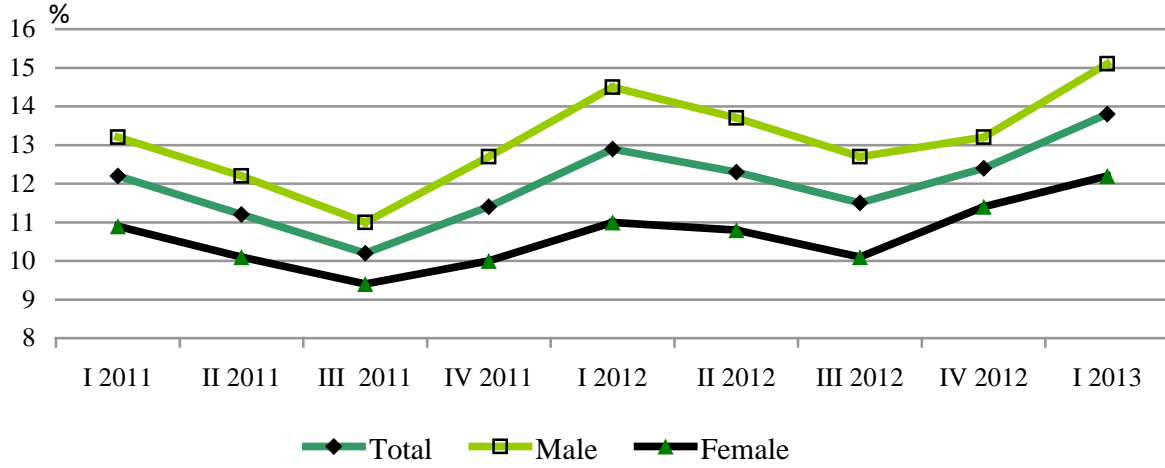
**The number of long-term unemployed** was 250.8 thousand, 55.0% of all unemployed, and compared to the first quarter of previous year their number rose by 10.6%. The long-term unemployment rate in the first quarter of the current year went up by 0.7 percentage points and reached 7.6%, respectively 8.7% for men and 6.3% for women.

In the first quarter of 2013 previous employment experience had 384.2 thousand (84.2%) of all unemployed persons, as their number went up by 9.6% compared to the same quarter of 2012. Unemployed, who were looking for their first job rose by 1.9% and during the first quarter of 2013 reached 72.1 thousand.

**The unemployment rate for the population aged 15 - 29** was 23.6% (24.4% for men and 22.6% for women) and in comparison with the first quarter of 2012 grew up by 0.6 percentage points as the increase was higher for women (by 0.9 percentage points) than for men (by 0.4 percentage points).



**Figure 2. Unemployment rate by sex and by quarter**





## Methodological notes

The Labour Force Survey (LFS) is a continuous sample survey providing quarterly and annual data on the economic activity of the population aged 15 and over. The survey covers non-institutional households.

**Reference period** - the characteristics of each interviewee refer to his/her status during a defined calendar week.

**Economically active population** (labour force) comprises all employed and unemployed persons.

**Employed** are persons aged 15 and over whom during the reference period:

- performed some work for at least one hour for pay in cash or in kind or other income;
- did not work but had a job or an enterprise, a business from which they were temporarily absent due to illness, annual leave, full-paid maternity leave, parental leave, strike or another labour dispute, etc.

**Unemployed** are persons aged 15 to 74 who:

- did not work at all during the reference period;
- were actively seeking work within the preceding four weeks, including the reference one or have found a new job or business that is expected to start within 3 months following the reference period;
- were available to start working within two weeks following the reference period.

**Long-term unemployed** are persons who have been unemployed for one or more years.

**Inactive population** (persons not in the labour force) includes persons aged 15 and over who were neither employed, nor unemployed during the reference period.

**Discouraged persons** are persons not in the labour force who want to work but they do not actively look for a job, because they do not believe they will find one.

**Activity rate** - ratio between the economically active population and the total population of the same age group.

**Employment rate** - ratio between the employed population and the total population of the same age group.

**Unemployment rate** - ratio between the unemployed persons and the economically active population.

**Long-term unemployment rate** - ratio between the long-term unemployed persons and the economically active population.

The distribution of the employed persons by economic sector is done in accordance with the Classification of Economic Activities - 2008.

**For the weighting of the results of the survey for the first quarter of 2013 the current population estimates as of 31 December 2012 for the population living in non-institutional households were used.**

Like all sample surveys data from the labour force survey are subject of errors due to the sample (stochastic errors). The calculated relative standard errors for the main LFS indicators for the first quarter of 2013 are as follows:

- total number of employed - 1.2%;
- total number of unemployed - 3.2%;
- unemployment rate - 2.9%.

Because of the rounding of the figures some of the totals (rows and columns) are not equal to the sum of the components.

More detailed data from the Labour Force Survey could be found on the NSI website: [www.nsi.bg](http://www.nsi.bg) , section “Labour Market”, Labour Force Survey.



Annex

Table 1

Main labour market indicators, first quarter of 2012 and 2013

	First quarter 2012	First quarter 2013	Change (First quarter 2013 minus First quarter 2012)
<b>Total</b>			
Activity rate (15 - 64) - %	65.4	67.0	1.6
Employed persons aged 15 and over - thousands	2853.2	2855.0	1.8
Employed persons aged 15 - 64 - thousands	2815.9	2815.4	-0.5
Employed persons aged 15 - 24 - thousands	163.6	162.5	-1.1
Employed persons aged 15 - 29 - thousands	467.2	450.5	-16.7
Employed persons aged 20 - 64 - thousands	2807.7	2805.7	-2.0
Employed persons aged 55 - 64 - thousands	461.6	473.7	12.1
Employment rate (15 and over) - %	45.1	45.6	0.5
Employment rate (15 - 64) - %	56.9	57.7	0.8
Employment rate (15 - 24) - %	19.7	20.6	0.9
Employment rate (15 - 29) - %	35.5	35.4	-0.1
Employment rate (20 - 64) - %	61.1	61.7	0.6
Employment rate (55 - 64) - %	43.9	45.5	1.6
Unemployed persons - total - thousands	421.4	456.4	35.0
Unemployed persons aged 15 - 64 - thousands	419.7	452.6	32.9
Unemployed persons aged 15 - 24 - thousands	74.8	68.1	-6.7
Unemployed persons aged 15 - 29 - thousands	139.9	139.3	-0.6
Unemployment rate - %	12.9	13.8	0.9
Unemployment rate (15 - 64) - %	13.0	13.8	0.8
Unemployment rate (15 - 24) - %	31.4	29.5	-1.9
Unemployment rate (15 - 29) - %	23.0	23.6	0.6
Long-term unemployment rate - %	6.9	7.6	0.7
Discouraged persons - thousands	247.3	236.7	-10.6
Discouraged persons (15 - 64) - thousands	245.7	233.0	-12.7



### Main labour market indicators, first quarter of 2012 and 2013

(Continued)

	First quarter 2012	First quarter 2013	Change (First quarter 2013 minus First quarter 2012)
<b>Male</b>			
Activity rate (15 - 64) - %	69.1	70.9	1.8
Employed persons aged 15 and over - thousands	1492.5	1499.0	6.5
Employed persons aged 15 - 64 - thousands	1467.9	1474.8	6.9
Employed persons aged 15 - 24 - thousands	92.4	96.4	4.0
Employed persons aged 15 - 29 - thousands	262.2	255.1	-7.1
Employed persons aged 20 - 64 - thousands	1464.4	1469.4	5.0
Employed persons aged 55 - 64 - thousands	240.8	244.3	3.5
Employment rate (15 and over) - %	49.0	49.7	0.7
Employment rate (15 - 64) - %	59.0	60.1	1.1
Employment rate (15 - 24) - %	21.7	23.8	2.1
Employment rate (15 - 29) - %	38.7	38.9	0.2
Employment rate (20 - 64) - %	63.5	64.3	0.8
Employment rate (55 - 64) - %	48.7	49.8	1.1
Unemployed persons - total - thousands	252.3	267.5	15.2
Unemployed persons aged 15 - 64 - thousands	251.9	265.4	13.5
Unemployed persons aged 15 - 24 - thousands	46.0	41.9	-4.1
Unemployed persons aged 15 - 29 - thousands	83.0	82.1	-0.9
Unemployment rate - %	14.5	15.1	0.6
Unemployment rate (15 - 64) - %	14.6	15.3	0.7
Unemployment rate (15 - 24) - %	33.2	30.3	-2.9
Unemployment rate (15 - 29) - %	24.0	24.4	0.4
Long-term unemployment rate - %	8.1	8.7	0.6
Discouraged persons - thousands	135.6	130.0	-5.6
Discouraged persons (15 - 64) - thousands	135.0	128.1	-6.9



### Main labour market indicators, first quarter of 2012 and 2013

(Continued and end)

	First quarter 2012	First quarter 2013	Change (First quarter 2013 minus First quarter 2012)
<b>Female</b>			
Activity rate (15 - 64) - %	61.6	63.0	1.4
Employed persons aged 15 and over - thousands	1360.7	1356.0	-4.7
Employed persons aged 15 - 64 - thousands	1348.0	1340.7	-7.3
Employed persons aged 15 - 24 - thousands	71.2	66.1	-5.1
Employed persons aged 15 - 29 - thousands	205.0	195.4	-9.6
Employed persons aged 20 - 64 - thousands	1343.3	1336.3	-7.0
Employed persons aged 55 - 64 - thousands	220.8	229.4	8.6
Employment rate (15 and over) - %	41.5	41.7	0.2
Employment rate (15 - 64) - %	54.8	55.3	0.5
Employment rate (15 - 24) - %	17.6	17.2	-0.4
Employment rate (15 - 29) - %	32.1	31.6	-0.5
Employment rate (20 - 64) - %	58.7	59.1	0.4
Employment rate (55 - 64) - %	39.6	41.7	2.1
Unemployed persons - total - thousands	169.0	188.8	19.8
Unemployed persons aged 15 - 64 - thousands	167.8	187.2	19.4
Unemployed persons aged 15 - 24 - thousands	28.8	26.3	-2.5
Unemployed persons aged 15 - 29 - thousands	56.9	57.1	0.2
Unemployment rate - %	11.0	12.2	1.2
Unemployment rate (15 - 64) - %	11.1	12.3	1.2
Unemployment rate (15 - 24) - %	28.8	28.4	-0.4
Unemployment rate (15 - 29) - %	21.7	22.6	0.9
Long-term unemployment rate - %	5.6	6.3	0.7
Discouraged persons - thousands	111.6	106.7	-4.9
Discouraged persons (15 - 64) - thousands	110.6	104.9	-5.7