



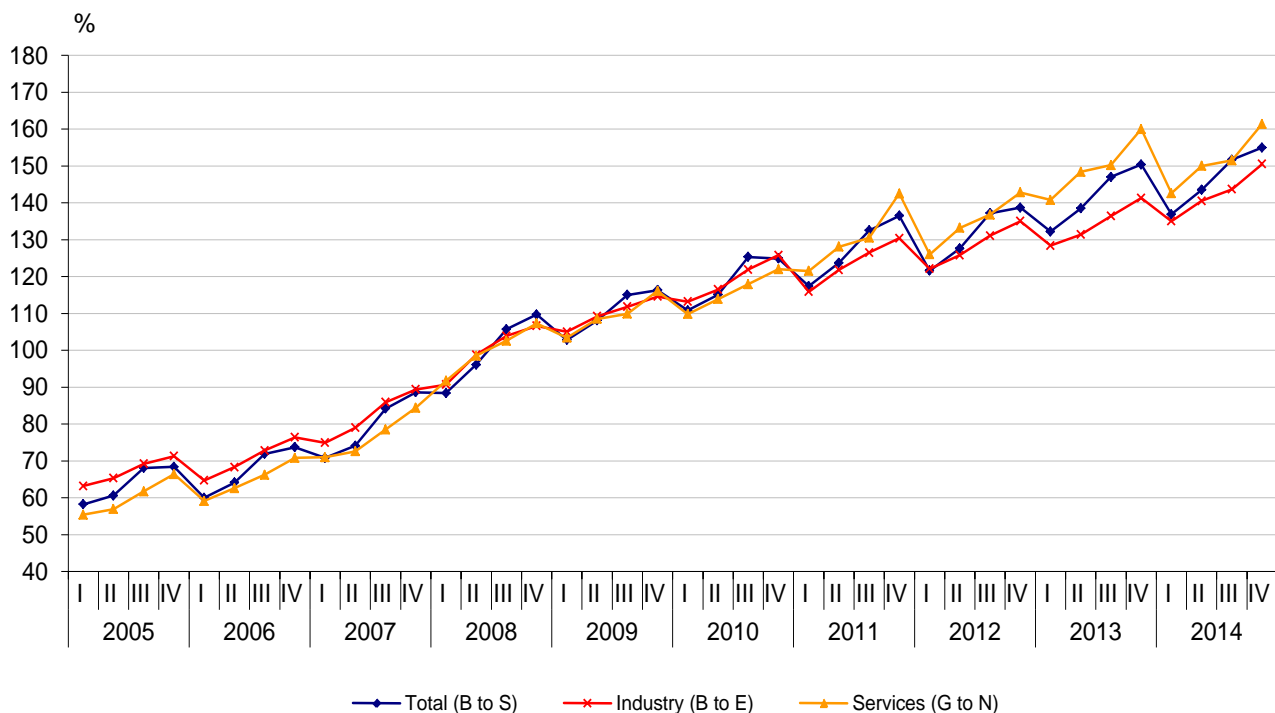
QUARTERLY LABOUR COST INDEX FOURTH QUARTER OF 2014

Preliminary data of the NSI for the fourth quarter of 2014 indicate that the total hourly labour cost rose by 3.1% compared to the fourth quarter of 2013. The total hourly labour cost grew by 6.5% in industry, by 0.9% in services and by 2.9% in construction.

The breakdown by economic activities showed that the highest annual growths in total labour costs were recorded in 'Administrative and support service activities' - 8.9%, 'Electricity, gas, steam and air conditioning supply' - 7.6% and 'Transportation and storage' - 7.5%. The highest decrease in total labour costs was observed in 'Real estate activities' by 13.4% and 'Wholesale and retail trade; repair of motor vehicles and motorcycles' by 5.2%.

In the structure of the total labour costs, the wages and salaries costs per hour worked grew by 2.4% in comparison with a year earlier, while the other (non-wage) costs rose by 6.3%. Among the economic activities in the fourth quarter of 2014 compared to the fourth quarter of 2013 the growth rate of wages and salaries component ranged from (-14.3%) in 'Real estate activities' to 8.1% in 'Administrative and support service activities'.

**Figure 1. Total labour cost index
(Working day adjusted, 2008 = 100)**





Methodological notes

Labour Cost Index is a short-term indicator measuring the quarterly development of hourly labour costs incurred by the employers as a result of engaging the labour work force. The Quarterly Survey on employees, hours worked, wages and salaries and other expenditures paid by the employer is the main source used for the labour cost index data calculation.

Labour cost index (LCI) is defined as a Laspeyres index of labour costs per hour worked. Since first quarter of 2009 it has been calculated broken down by economic activities at section level according to the new NACE Rev.2 classification and with a reference year 2008 = 100. Indices are based on Regulation (EC) 450/2003 of the European Parliament and of the Council according to which requirements Labour costs indices shall be provided separately for the following three labour costs categories:

Total labour costs (TOT), which includes wages and salaries paid by the employer in cash or in kind, employers' actual and imputed social contribution plus taxes regarded as labour costs;

Wage and salary costs (WAG) covers wages and salaries paid in cash or in kind;

Labour costs other than wages and salaries (OTH - non-wage costs) include the employers' actual and imputed social contribution plus taxes regarded as labour costs;

Economic activity coverage (NACE Rev.2):

- **Total (sections B to S)** - Mining and quarrying (B), Manufacturing (C), Electricity, gas, steam and air conditioning supply (D), Water supply, sewerage, waste management and remediation activities (E), Construction (F), Wholesale and retail trade; repair of motor vehicles and motorcycles (G), Transportation and storage (H), Accommodation and food service activities (I), Information and communication (J), Financial and insurance activities (K), Real estate activities (L), Professional, scientific and technical activities (M), Administrative and support service activities (N), Public administration and defence; compulsory social security (O), Education (P), Human health and social work activities (Q), Arts, entertainment and recreation (R), Other service activities (S);
- **Industry (section B to E)** - Mining and quarrying (B), Manufacturing (C), Electricity, gas, steam and air conditioning supply (D), Water supply, sewerage, waste management and remediation activities (E);
- **Services (sections G to N)** - Wholesale and retail trade; repair of motor vehicles and motorcycles (G), Transportation and storage (H), Accommodation and food service activities (I), Information and communication (J), Financial and insurance activities (K), Real estate activities (L), Professional, scientific and technical activities (M), Administrative and support service activities (N).

More methodological information on the labour cost index and data could be found on the NSI official website - <http://www.nsi.bg/en>.

Table 1

Hourly labour cost index for the period fourth quarter of 2012 - fourth quarter of 2014
(Working day adjusted)

(Percentage change compared to corresponding period of the previous year)

Code NCEA - 2008 ¹	Economic activities	q4 2012			q1 2012			q2 2013 ²			q3 2013 ²			q4 2013 ²			q1 2013 ²			q2 2014 ²			q3 2014 ²			q4 2014 ²		
		TOT	WAG	OTH	TOT	WAG	OTH	TOT	WAG	OTH	TOT	WAG	OTH	TOT	WAG	OTH	TOT	WAG	OTH	TOT	WAG	OTH	TOT	WAG	OTH	TOT	WAG	OTH
B to S	All NACE branches except agriculture, fishing, private households with employed persons	1.6	2.2	0.1	8.7	9.2	7.4	8.6	8.6	7.1	7.1	7.2	6.4	8.4	8.7	7.0	3.6	2.8	7.5	3.6	3.0	6.5	3.2	2.6	5.7	3.1	2.4	6.3
B to E	Industry (except construction)	3.5	4.7	1.7	5.1	5.6	7.0	4.4	4.5	3.4	4.1	3.8	4.9	4.7	4.6	4.7	5.1	4.7	8.3	6.9	6.8	6.9	5.3	4.7	6.0	6.5	6.0	7.7
G to N	Services (excluding public administration)	0.3	0.6	-0.5	11.7	12.3	8.1	11.4	11.5	8.7	9.8	9.9	7.7	12.0	12.5	9.3	1.3	0.4	6.8	1.1	0.4	5.9	0.9	0.2	5.1	0.9	0.3	3.5
B	Mining and quarrying	0.3	0.0	1.3	1.3	0.4	4.6	1.5	0.2	6.1	-0.3	-2.4	7.7	8.9	7.1	16.0	8.0	7.2	11.0	8.9	9.3	7.6	5.2	5.2	5.1	4.5	4.8	3.7
C	Manufacturing	4.8	6.1	3.5	6.5	7.2	8.5	4.4	4.6	2.6	4.6	4.5	3.9	5.1	5.2	4.0	5.1	4.8	8.0	7.2	7.5	5.1	6.0	5.4	5.8	7.0	7.0	5.6
D	Electricity, gas, steam and air conditioning supply	-0.6	0.5	-5.3	0.5	0.0	2.9	5.0	4.9	5.5	2.5	1.7	6.2	-2.0	-2.0	-1.8	0.7	-0.2	4.4	4.0	2.8	9.8	1.6	0.0	8.7	7.6	4.3	21.9
E	Water supply, sewerage, waste management and remediation activities	2.0	2.7	-1.7	3.9	4.1	3.3	6.2	6.4	4.3	7.4	7.2	8.6	8.3	8.2	8.9	10.6	9.4	16.3	8.2	6.0	20.3	4.0	4.2	3.0	1.1	-0.6	8.3
F	Construction	-0.3	0.0	-2.0	1.6	1.7	1.1	4.9	5.0	5.1	3.4	4.1	-0.1	4.1	4.2	3.7	4.4	4.4	4.2	3.9	4.0	3.5	4.3	4.4	3.9	2.9	2.0	7.3
G	Wholesale and retail trade; repair of motor vehicles and motorcycles	0.0	0.4	-0.3	11.2	11.7	9.4	15.0	15.7	10.5	11.5	12.3	8.1	18.2	18.8	14.0	1.0	0.1	5.3	-1.7	-2.2	3.4	0.5	-0.2	3.5	-5.2	-5.4	-4.6
H	Transportation and storage	-1.6	0.4	-10.2	5.6	7.5	-1.9	4.0	5.4	-1.8	2.8	2.3	5.3	2.8	2.5	4.5	2.5	1.1	9.7	5.7	4.1	11.6	6.7	6.0	9.8	7.5	6.6	11.8
I	Accommodation and food service activities	16.9	16.6	18.3	13.9	15.0	8.4	9.7	10.0	7.9	4.9	5.0	4.8	6.4	6.9	3.7	5.1	5.1	5.0	3.6	3.5	3.6	2.5	2.8	0.9	6.4	6.0	8.7
J	Information and communication	-1.3	-0.4	-1.9	15.0	14.7	10.4	15.5	12.8	20.5	14.1	13.5	9.7	9.1	8.6	12.4	1.9	0.8	11.2	-1.8	-2.2	3.6	-3.9	-4.9	3.1	6.7	6.0	6.5
K	Financial and insurance activities	-3.3	-4.3	-0.1	7.7	7.4	7.8	4.5	4.1	6.9	5.4	4.7	7.4	7.7	8.6	3.5	1.2	-0.1	8.1	6.1	5.9	7.7	1.4	0.3	10.4	0.7	0.2	4.2
L	Real estate activities	13.0	13.3	12.4	23.6	23.8	11.3	13.2	15.2	1.2	15.1	17.3	2.5	14.9	16.5	4.6	-16.4	-17.7	-6.1	-15.8	-17.5	-0.8	-16.3	-18.4	-0.7	-13.4	-14.3	-6.7
M	Professional, scientific and technical activities	-4.7	-5.3	-1.5	19.6	20.2	15.9	15.7	15.8	12.9	16.1	16.3	13.1	16.7	18.0	9.6	-4.3	-5.1	1.6	-1.6	-2.5	3.6	-0.8	-0.8	0.8	-1.6	-3.0	6.7
N	Administrative and support service activities	2.0	1.7	4.1	9.3	9.6	12.5	8.2	8.2	6.5	8.1	8.6	6.5	13.1	13.9	9.2	9.1	8.8	10.0	10.3	9.7	14.5	6.9	6.1	10.2	8.9	8.1	12.6
O	Public administration and defence; compulsory social security	-4.6	-4.1	-6.0	9.5	8.7	12.3	6.9	5.8	11.1	5.1	4.0	9.1	3.1	2.0	7.1	6.5	5.8	9.3	7.3	6.5	10.0	8.0	7.8	8.5	5.0	3.6	9.4
P	Education	1.6	2.4	-2.1	8.2	8.4	6.5	10.4	10.3	10.8	7.2	7.4	6.0	9.3	9.5	8.6	6.6	6.3	7.7	3.7	3.2	5.8	3.2	2.7	5.3	5.6	4.3	11.5
Q	Human health and social work activities	9.9	10.1	9.3	9.7	11.7	6.5	9.3	9.8	6.9	8.6	9.0	7.3	7.7	8.7	2.2	7.1	6.6	9.3	7.4	6.6	11.4	4.8	4.5	5.9	2.5	1.5	8.2
R	Arts, entertainment and recreation	3.4	3.9	1.0	8.6	8.7	7.9	2.3	1.9	3.5	1.9	1.0	6.0	3.6	3.1	5.0	6.9	6.2	11.1	-2.6	-2.3	-2.7	-0.8	0.1	-4.7	1.7	1.6	1.7
S	Other service activities	14.6	15.8	8.6	3.6	5.3	-5.4	6.9	7.8	2.3	-4.3	-4.0	-5.5	5.2	5.5	3.6	5.5	4.2	13.0	-3.3	-3.6	-2.3	4.3	4.3	3.9	-0.9	-1.2	0.7

¹ NCEA - 2008 - National Classification of economic activities comparable with NACE Rev.2.

² Preliminary data.

TOT - Total labour costs

WAG - Wages and salaries costs

OTH - Other (non-wage) costs

Table 2

Labour Cost Index - Total labour costs for the period 2010 - 2014
(Working day adjusted, 2008=100)

Code NCEA - 2008 ¹	Economic activities	(Per cent)																			
		2010				2011				2012				2013 ²				2014 ²			
		Q1	Q2	Q3	Q4	Q1	Q2	Q3	Q4	Q1	Q2	Q3	Q4	Q1	Q2	Q3	Q4	Q1	Q2	Q3	Q4
B to S	All NACE branches except agriculture, fishing, private households with employed persons	110.8	115.1	125.3	124.9	117.4	123.7	132.5	136.5	121.6	127.6	137.2	138.7	132.2	138.5	147.0	150.4	136.9	143.5	151.7	155.0
B to E	Industry (except construction)	113.2	116.5	121.9	125.8	115.9	121.8	126.5	130.4	122.1	125.8	131.1	135.0	128.4	131.4	136.4	141.3	135.0	140.5	143.7	150.5
G to N	Services (excluding public administration)	109.8	113.9	117.9	122.0	121.5	128.1	130.5	142.5	126.0	133.2	136.8	142.8	140.8	148.4	150.2	160.0	142.6	150.0	151.5	161.4
B	Mining and quarrying	118.9	110.8	118.2	135.3	118.8	118.3	127.7	147.4	132.9	125.7	140.0	147.8	134.7	127.6	139.6	160.9	145.4	138.9	146.8	168.2
C	Manufacturing	113.6	115.1	121.0	121.9	115.8	119.9	125.6	127.9	121.9	125.8	131.1	134.0	129.8	131.3	137.2	140.9	136.4	140.8	145.4	150.8
D	Electricity,gas,steam and air conditioning supply	107.7	125.4	127.6	138.8	113.9	131.9	129.5	131.0	117.4	125.2	125.9	130.2	118.1	131.5	129.1	127.7	118.9	136.8	131.2	137.4
E	Water supply,sewerage,waste management and remediation activities	101.6	107.1	111.0	118.6	104.4	112.9	114.2	122.0	107.2	113.1	115.3	124.4	111.4	120.0	123.9	134.8	123.2	129.9	128.8	136.2
F	Construction	132.5	124.2	128.5	132.1	133.7	126.9	129.6	143.1	134.6	129.7	131.5	142.7	136.8	136.1	136.0	148.6	142.8	141.5	141.9	152.8
G	Wholesale and retail trade;repair of motor vehicles and motorcycles	108.9	112.0	115.4	117.7	128.7	131.5	133.6	148.9	135.2	139.9	144.6	148.9	150.4	160.8	161.2	176.0	151.9	158.1	162.1	166.8
H	Transportation and storage	111.8	114.8	120.4	124.0	114.4	119.3	121.3	128.5	113.7	120.8	124.4	126.4	120.1	125.6	127.9	129.9	123.1	132.7	136.4	139.7
I	Accommodation and food service activities	113.6	113.8	113.3	119.7	117.4	121.6	119.1	128.9	131.1	139.1	138.0	150.7	149.3	152.5	144.8	160.3	156.8	157.9	148.4	170.6
J	Information and communication	108.7	114.1	123.3	122.3	127.5	141.2	145.8	157.6	131.4	140.6	146.8	155.6	151.2	162.4	167.5	169.7	154.0	159.4	160.9	181.2
K	Financial and insurance activities	101.4	112.0	109.5	120.7	100.4	115.8	113.1	127.3	103.5	117.6	114.8	123.1	111.4	123.0	121.0	132.6	112.8	130.4	122.7	133.5
L	Real estate activities	105.4	112.0	117.8	126.2	113.7	115.4	115.2	119.2	116.6	127.8	128.1	134.7	144.1	144.7	147.5	154.7	120.5	121.9	123.4	134.0
M	Professional,scientific and technical activities	109.3	109.6	120.6	125.6	123.7	126.8	144.3	155.7	127.6	129.3	141.3	148.5	152.5	149.6	164.0	173.2	146.0	147.1	162.8	170.4
N	Administrative and support service activities	117.7	124.7	124.9	129.5	126.8	138.0	132.5	141.4	131.2	139.6	139.0	144.1	143.4	151.0	150.3	163.0	156.5	166.7	160.8	177.5
O	Public administration and defence;compulsory social security	99.1	110.1	125.0	128.0	104.1	112.7	127.7	133.2	105.9	111.8	125.1	127.1	115.9	119.5	131.5	131.0	123.5	128.2	142.0	137.5
P	Education	96.3	111.1	177.5	125.1	100.0	116.0	173.9	128.3	101.7	113.8	175.1	130.3	110.1	125.7	187.7	142.4	117.3	130.3	193.6	150.4
Q	Human health and social work activities	112.1	118.5	126.9	127.4	112.2	118.6	126.5	127.7	116.5	125.7	135.2	140.4	127.8	137.4	146.9	151.1	136.9	147.6	154.0	155.0
R	Arts,entertainment and recreation	111.1	108.7	121.9	122.5	131.1	127.3	139.8	137.7	117.0	124.1	136.5	142.3	127.1	126.9	139.0	147.4	135.8	123.6	137.9	150.0
S	Other service activities	112.7	115.2	123.2	126.6	115.2	116.2	126.2	123.4	122.6	130.3	141.5	141.4	127.0	139.4	135.5	148.8	134.0	134.7	141.3	147.5

¹ NCEA - 2008 - National Classification of economic activities comparable with NACE Rev.2.

² Preliminary data.