

Industrial Production Indices and Industrial Turnover Indices in November 2009^{1,2}

1. Industrial Production Indices³

The preliminary data showed that the Industrial Production Index decreased by 10.8% in November 2009 as compared to November 2008. Decreases were registered in the manufacturing by 14.0% and in the electricity, gas, steam and air conditioning supply by 8.1%, while in the mining and quarrying industry the production increased by 13.5%. The production of investment goods fell by 23.3%, the production of intermediate goods by 10.3%, the production of energy by 1.9%.

In November 2009, the Industrial Production Index increased by 1.2% as compared to the previous month. Increase was registered in the electricity, gas, steam and air conditioning supply by 13.6%, while the production in the mining and quarrying industry decreased by 3.5% and in the manufacturing by 1.7%. The most significant increases of production were seen in the manufacture of wood and of products of wood and cork, except furniture; manufacture of articles of straw and plaiting materials by 8.5%, the manufacture of chemicals and chemical products by 3.6%, the manufacture of basic metals by 2.5%. There were decreases in the manufacture of tobacco products by 6.4%, in the manufacture of other non-metallic mineral products by 5.5%, in the manufacture of wearing apparel by 3.6%.

2. Industrial Turnover Indices⁴

According to the preliminary data in November 2009 the Industrial Turnover Index decreased by 13.2% compared to November 2008. The electricity, gas, steam and air conditioning supply reported a drop of 18.4%, the manufacturing - 12.8%, while in the mining and quarrying industry an increase by 13.3% was seen.

¹ November 2009 data are preliminary.

² Since January 2009, Industrial Production Indices and Industrial Turnover Indices are calculated according to the new Classification of Economic Activities NACE.BG 2008. At the same time, the base year has been changed and indices are calculated at 2005 as a base year. Historical data series have been recalculated back to 2000 and they are posted in NSI web-site (http://www.nsi.bg/Op_e/Op_e.htm).

³ Monthly Industrial Production and Industrial turnover indices measure changes in **production and turnover values** of industrial enterprises. This information can be used to assess the current economic development and for short-term forecasts. Indices do not measure the actual production level, it aims to measure the average change in value of production between two points of time

Indices are compiled on the base of information collected through representative sampling survey on industrial enterprises. The sample covers enterprises with annual turnover more than 97% of total turnover in industry.

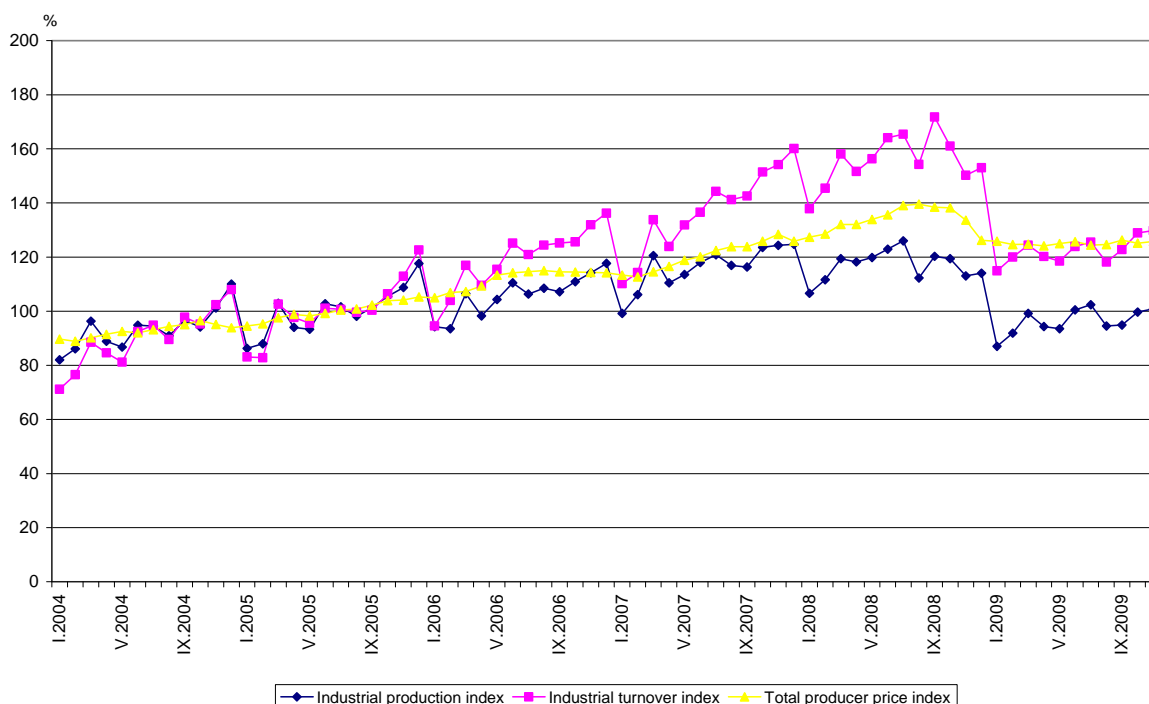
Industrial production indices are calculated at constant base year (2005) that is to say they are weighted with the structure of the value added at factor costs in the base year

⁴ The turnover comprises the totals invoiced by the observation units plus taxes on products (excise duty). Turnover indices are calculated at 2005 as a base year through direct comparison of the values of the turnover at current prices, turnover values are not corrected with the price changes. **The Turnover indices reflect the development of the value of sales as well as changes in prices.**

In November 2009, the turnover increased by 0.7% as compared to the previous month. The increase in the electricity, gas, steam and air conditioning supply was by 17.2%, while in the manufacturing was registered decrease by 3.7%.

The final data on Industrial Production and Turnover Indices can be found in NSI internet web-site: (http://www.nsi.bg/Op_e/Op_e.htm).

Industrial Production Indices and Industrial Turnover Indices (2005 = 100)



Industrial Production Indices in November 2009⁵
(Preliminary data)

Economic activities	2005=100	Previous month=100	The same month of 2008=100
Industry	100.9	101.2	89.2
Mining and quarrying	89.1	96.5	113.5
of which:			
Mining of coal and lignite	116.6	96.2	103.4
Mining of metal ores	85.9	94.7	177.5
Other mining and quarrying	82.0	103.8	68.8
Manufacturing	96.6	98.3	86.0
of which:			
Manufacture of food products	115.0	97.4	88.0
Manufacture of beverages	88.7	97.7	80.2
Manufacture of tobacco products	134.5	93.6	104.3
Manufacture of textiles	68.6	102.1	79.8
Manufacture of wearing apparel	70.1	96.4	75.3
Manufacture of leather and related products	73.5	87.0	59.3
Manufacture of wood and of products of wood and cork, except furniture; manufacture of articles of straw and plaiting materials	83.1	108.5	81.9
Manufacture of paper and paper products	77.7	99.4	81.7
Printing and reproduction of recorded media	144.3	97.9	106.1
Manufacture of chemicals and chemical products	82.4	103.6	104.7
Manufacture of basic pharmaceutical products and pharmaceutical preparations	88.1	108.7	82.2
Manufacture of rubber and plastic products	115.2	95.3	88.0
Manufacture of other non-metallic mineral products	84.7	94.5	56.3
Manufacture of basic metals	111.0	102.5	120.5
Manufacture of fabricated metal products, except machinery and equipment	86.0	103.1	75.2
Manufacture of computer, electronic and optical products	102.5	117.1	118.3
Manufacture of electrical equipment	150.4	101.5	93.7
Manufacture of machinery and equipment n.e.c.	101.8	103.2	75.5
Manufacture of motor vehicles, trailers and semi- trailers	125.9	91.5	127.2
Manufacture of other transport equipment	91.6	69.5	53.7
Manufacture of furniture	92.3	101.8	61.4
Other manufacturing	145.3	75.0	96.3
Repair and installation of machinery and equipment	101.1	100.2	70.9
Electricity, gas, steam and air conditioning supply	121.4	113.6	91.9
Electricity, gas, steam and air conditioning supply	121.4	113.6	91.9

⁵ In the tables are not included data that according to the Law on Statistics are confidential and in this way they are statistical secrecy.

Industrial Turnover Indices in November 2009⁶
(Preliminary data)

Economic activities	2005=100	Previous month=100	The same month of 2008=100
Industry	129.8	100.7	86.8
Mining and quarrying	149.7	100.2	113.3
of which:			
Mining of coal and lignite	178.1	96.3	100.9
Mining of metal ores	165.7	100.7	167.4
Other mining and quarrying	122.6	107.6	75.4
Manufacturing	120.0	96.3	87.2
of which:			
Manufacture of food products	170.8	96.0	91.4
Manufacture of beverages	110.5	94.2	90.7
Manufacture of tobacco products	138.1	83.4	102.2
Manufacture of textiles	73.7	89.3	75.1
Manufacture of wearing apparel	89.9	93.2	79.1
Manufacture of leather and related products	78.5	87.1	57.6
Manufacture of wood and of products of wood and cork, except furniture; manufacture of articles of straw and plaiting materials	102.6	103.6	75.6
Manufacture of paper and paper products	86.5	101.1	80.4
Printing and reproduction of recorded media	136.1	101.3	102.9
Manufacture of chemicals and chemical products	125.1	95.4	110.6
Manufacture of basic pharmaceutical products and pharmaceutical preparations	107.3	112.8	91.7
Manufacture of rubber and plastic products	135.7	94.8	85.3
Manufacture of other non-metallic mineral products	110.5	91.5	59.1
Manufacture of basic metals	131.5	100.9	109.7
Manufacture of fabricated metal products, except machinery and equipment	113.8	98.7	78.5
Manufacture of computer, electronic and optical products	108.1	108.4	106.9
Manufacture of electrical equipment	195.5	99.7	101.5
Manufacture of machinery and equipment n.e.c.	136.1	110.7	82.6
Manufacture of motor vehicles, trailers and semi- trailers	101.2	94.7	77.9
Manufacture of other transport equipment	112.4	74.0	57.7
Manufacture of furniture	118.4	101.7	65.1
Other manufacturing	150.5	79.9	86.2
Repair and installation of machinery and equipment	147.3	105.4	84.7
Electricity, gas, steam and air conditioning supply	166.4	117.2	81.6
Electricity, gas, steam and air conditioning supply	166.4	117.2	81.6

⁶ In the tables are not included data that according to the Law on Statistics are confidential and in this way they are statistical secrecy.