

Industrial Production Indices and Industrial Turnover Indices in September 2009^{1,2}

1. Industrial Production Indices³

The preliminary data showed that the Industrial Production Index decreased by 19.3% in September 2009 as compared to September 2008. Decreases were registered in the mining and quarrying industry by 25.6%, in the manufacturing by 21.9% and in the electricity, gas, steam and air conditioning supply by 10.1%. The production of investment goods fell by 37.5%, the production of intermediate goods by 28.1%, the production of energy by 5.6%.

In September 2009, the Industrial Production Index increased by 2.7% as compared to the previous month. Increases of 3.7% were registered in the manufacturing and 1.1% in the electricity, gas, steam and air conditioning supply, while in the mining and quarrying industry the production decreased by 3.9%. The most significant increases of production were seen in the manufacture of chemicals and chemical products by 30.1%, in the manufacture of textiles by 29.9%, in the manufacture of tobacco products by 15.1%. There were decreases in the manufacture of beverages by 19.1%, in the manufacture of wearing apparel by 2.1%, in the manufacture of furniture by 0.5%.

2. Industrial Turnover Indices⁴

According to the preliminary data in September 2009 the Industrial Turnover Index decreased by 28.2% compared to September 2008. The mining and quarrying industry reported a drop of 31.9%, the manufacturing - 28.6% and the electricity, gas, steam and air conditioning supply - 27.6%.

In September 2009, the turnover increased by 4.1% as compared to the previous month. The increase in the manufacturing industry was by 5.0% and in the electricity, gas, steam and air conditioning supply by 3.6%.

¹ September 2009 data are preliminary.

² Since January 2009, Industrial Production Indices and Industrial Turnover Indices are calculated according to the new Classification of Economic Activities NACE.BG 2008. At the same time, the base year has been changed and indices are calculated at 2005 as a base year. Historical data series have been recalculated back to 2000 and they are posted in NSI web-site (http://www.nsi.bg/Op_e/Op_e.htm).

³ Monthly Industrial Production and Industrial turnover indices measure changes in **production and turnover values** of industrial enterprises. This information can be used to access the current economic development and for short-term forecasts. Indices do not measure the actual production level, it aims to measure the average change in value of production between two points of time

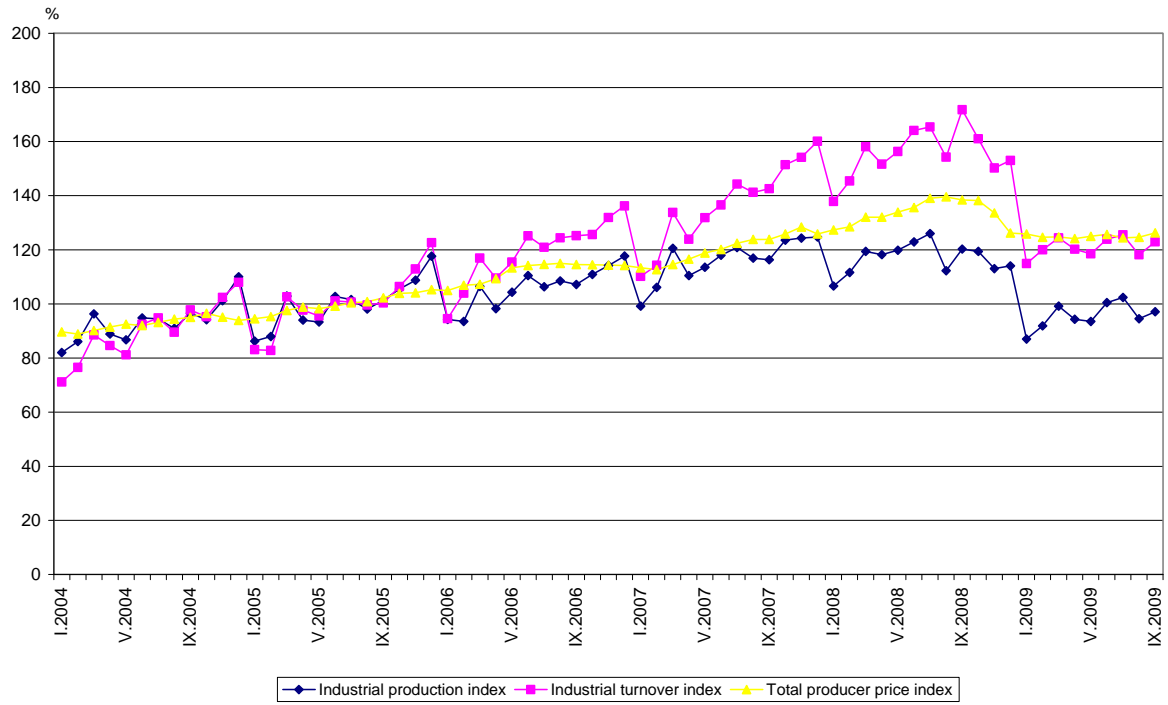
Indices are compiled on the base of information collected through representative sampling survey on industrial enterprises. The sample covers enterprises with annual turnover more than 97% of total turnover in industry.

Industrial production indices are calculated at constant base year (2005) that is to say they are weighted with the structure of the value added at factor costs in the base year

⁴ The turnover comprises the totals invoiced by the observation units plus taxes on products (excise duty). Turnover indices are calculated at 2005 as a base year through direct comparison of the values of the turnover at current prices, turnover values are not corrected with the price changes. **The Turnover indices reflect the development of the value of sales as well as changes in prices.**

The final data on Industrial Production and Turnover Indices can be found in NSI internet web-site: (http://www.nsi.bg/Op_e/Op_e.htm).

Industrial Production Indices and Industrial Turnover Indices (2005 = 100)



Industrial Production Indices in September 2009⁵
(Preliminary data)

Economic activities	2005=100	Previous month=100	The same month of 2008=100
Industry	97.1	102.7	80.7
Mining and quarrying	68.2	96.1	74.4
of which:			
Mining of coal and lignite	86.0	132.9	83.6
Mining of metal ores	64.0	77.0	81.3
Other mining and quarrying	75.0	90.9	52.7
Manufacturing	97.7	103.7	78.1
of which:			
Manufacture of food products	119.0	104.9	88.1
Manufacture of beverages	95.1	80.9	72.9
Manufacture of tobacco products	161.3	115.1	136.7
Manufacture of textiles	65.9	129.9	69.5
Manufacture of wearing apparel	67.4	97.9	70.1
Manufacture of leather and related products	78.5	122.4	74.8
Manufacture of wood and of products of wood and cork, except furniture; manufacture of articles of straw and plaiting materials	75.1	109.2	62.5
Manufacture of paper and paper products	79.8	115.8	81.9
Printing and reproduction of recorded media	128.2	107.7	100.1
Manufacture of chemicals and chemical products	89.7	130.1	64.2
Manufacture of basic pharmaceutical products and pharmaceutical preparations	88.7	117.1	86.4
Manufacture of rubber and plastic products	125.2	121.6	90.8
Manufacture of other non-metallic mineral products	88.3	101.3	53.3
Manufacture of basic metals	100.1	106.7	95.7
Manufacture of fabricated metal products, except machinery and equipment	87.7	100.3	70.8
Manufacture of computer, electronic and optical products	93.6	128.5	89.3
Manufacture of electrical equipment	140.8	132.0	79.3
Manufacture of machinery and equipment n.e.c.	100.3	119.0	70.0
Manufacture of motor vehicles, trailers and semi- trailers	121.2	123.4	89.3
Manufacture of other transport equipment	104.1	55.4	38.1
Manufacture of furniture	87.8	99.5	61.1
Other manufacturing	171.9	111.9	124.9
Repair and installation of machinery and equipment	77.9	78.0	44.9
Electricity, gas, steam and air conditioning supply	103.6	101.1	89.9
Electricity, gas, steam and air conditioning supply	103.6	101.1	89.9

⁵ In the tables are not included data that according to the Law on Statistics are confidential and in this way they are statistical secrecy.

Industrial Turnover Indices in September 2009⁶
(Preliminary data)

Economic activities	2005=100	Previous month=100	The same month of 2008=100
Industry	122.9	104.1	71.8
Mining and quarrying	111.1	89.5	68.1
of which:			
Mining of coal and lignite	134.0	132.1	88.0
Mining of metal ores	104.1	62.6	59.1
Other mining and quarrying	126.3	117.7	67.6
Manufacturing	120.4	105.0	71.4
of which:			
Manufacture of food products	180.2	109.1	85.7
Manufacture of beverages	131.4	81.5	78.5
Manufacture of tobacco products	152.3	113.8	104.0
Manufacture of textiles	73.9	140.2	67.1
Manufacture of wearing apparel	87.0	98.2	75.3
Manufacture of leather and related products	79.9	115.8	70.8
Manufacture of wood and of products of wood and cork, except furniture; manufacture of articles of straw and plaiting materials	96.3	105.7	57.9
Manufacture of paper and paper products	92.3	109.6	81.0
Printing and reproduction of recorded media	121.8	104.6	93.3
Manufacture of chemicals and chemical products	136.6	129.1	70.4
Manufacture of basic pharmaceutical products and pharmaceutical preparations	102.7	114.4	83.1
Manufacture of rubber and plastic products	136.8	110.1	75.6
Manufacture of other non-metallic mineral products	120.8	105.8	56.6
Manufacture of basic metals	113.8	100.2	75.5
Manufacture of fabricated metal products, except machinery and equipment	122.5	99.4	72.1
Manufacture of computer, electronic and optical products	105.5	117.7	84.6
Manufacture of electrical equipment	184.6	134.9	84.2
Manufacture of machinery and equipment n.e.c.	119.5	120.3	68.1
Manufacture of motor vehicles, trailers and semi- trailers	97.5	118.3	51.7
Manufacture of other transport equipment	132.7	63.2	69.1
Manufacture of furniture	106.5	98.2	58.4
Other manufacturing	174.4	101.6	143.3
Repair and installation of machinery and equipment	108.8	79.7	32.5
Electricity, gas, steam and air conditioning supply	133.4	103.6	72.4
Electricity, gas, steam and air conditioning supply	133.4	103.6	72.4

⁶ In the tables are not included data that according to the Law on Statistics are confidential and in this way they are statistical secrecy.