



## Industrial Production Indices and Industrial Turnover Indices in June 2010<sup>1</sup>

### 1. Industrial Production Indices<sup>2</sup>

The preliminary data showed that the Industrial Production Index increased by 3.6% in June 2010 as compared to June 2009. Increases were registered in the mining and quarrying industry by 13.4% and in the manufacturing by 4.9%, while in the electricity, gas, steam and air conditioning supply the production decreased by 2.4%. The production of intermediate goods rose by 11.8%, the production of investment goods by 9.5%, while the production of energy reported a drop by 1.2%.

In June 2010, the Industrial Production Index increased by 11.5% as compared to the previous month. Increases were registered in the electricity, gas, steam and air conditioning supply by 17.3%, in the mining and quarrying industry by 12.4% and in the manufacturing by 10.1%. The most significant increases of production were seen in the manufacture of paper and paper products by 29.4%, in the manufacture of basic pharmaceutical products and pharmaceutical preparations by 21.4%, in the manufacture of machinery and equipment by 20.9%, in the manufacture of wood and of products of wood and cork, except furniture; manufacture of articles of straw and plaiting materials by 15.7%, in the manufacture of furniture by 14.9%. There were decreases in the manufacture of basic metals by 8.6%, in the printing and reproduction of recorded media by 8.1%.

---

<sup>1</sup> June 2010 data are preliminary.

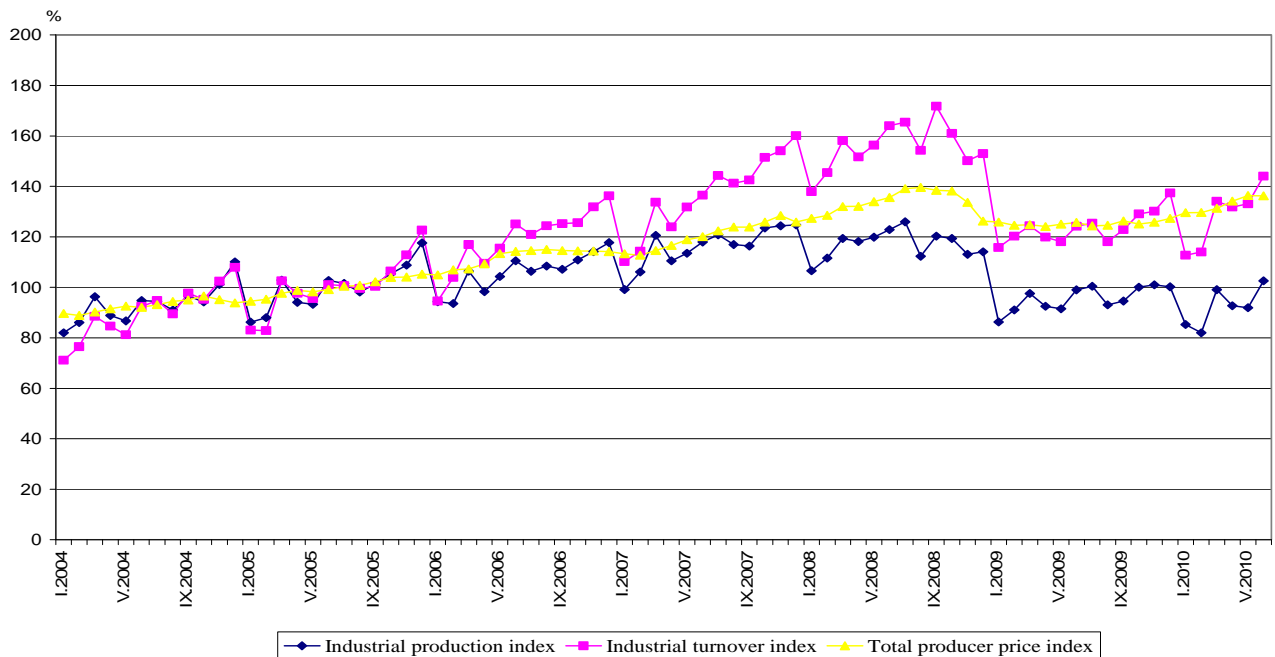
<sup>2</sup> Monthly Industrial Production and Industrial turnover indices measure changes in **production and turnover values** of industrial enterprises. This information can be used to assess the current economic development and for short-term forecasts. Indices do not measure the actual production level, it aims to measure the average change in value of production between two points of time

Indices are compiled on the base of information collected through representative sampling survey on industrial enterprises. The sample covers enterprises with annual turnover more than 97% of total turnover in industry.

Industrial production indices are calculated at constant base year (2005) that is to say they are weighted with the structure of the value added at factor costs in the base year



**Figure 1. Industrial Production Indices and Industrial Turnover Indices  
(2005 = 100)**



## 2. Industrial Turnover Indices<sup>3</sup>

According to the preliminary data in June 2010 the Industrial Turnover Index increased by 15.9% compared to June 2009. The increase in the mining and quarrying industry was by 53.8%, in the manufacturing by 18.7%, in the electricity, gas, steam and air conditioning supply by 0.6%.

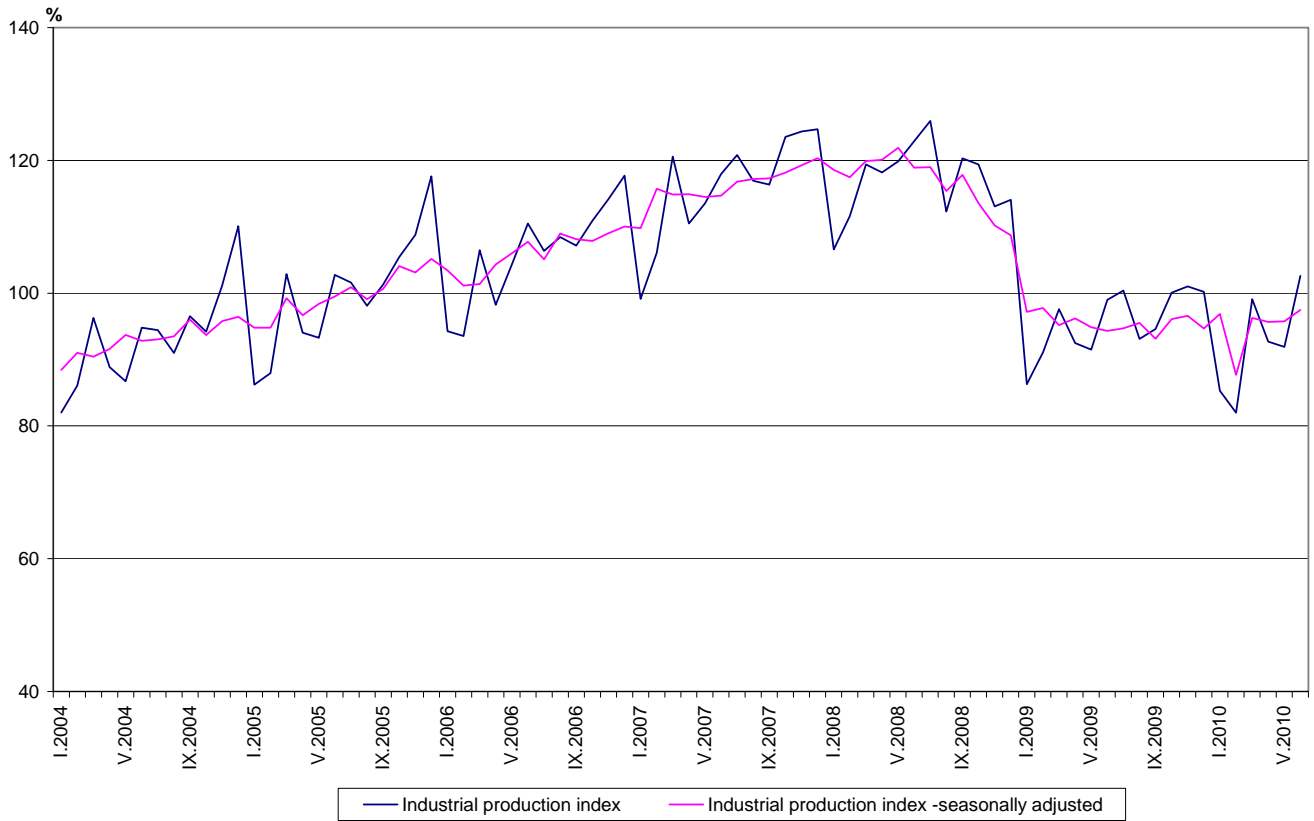
In June 2010, the turnover increased by 8.0% as compared to the previous month. The increase in the mining and quarrying industry was by 24.5%, in the manufacturing by 7.8% and in the electricity, gas, steam and air conditioning supply by 5.5%.

The final data on Industrial Production and Turnover Indices can be found in NSI internet web-site: (<http://www.nsi.bg/otrasalen.php?otr=46>).

<sup>3</sup> The turnover comprises the totals invoiced by the observation units plus taxes on products (excise duty). Turnover indices are calculated at 2005 as a base year through direct comparison of the values of the turnover at current prices, turnover values are not corrected with the price changes. **The Turnover indices reflect the development of the value of sales as well as changes in prices.**



**Figure 2. Industrial Production Indices (2005 = 100)<sup>4</sup>**



<sup>4</sup> Since June 2010 NSI publish seasonally adjusted data on Industrial production index .Seasonal adjustment aids interpretation the data by removing annually recurring fluctuations, like due to holidays, different number of the working days and all other seasonal patterns. The seasonally adjusted data on Industrial production index can be found in NSI internet web-site: (<http://www.nsi.bg/otrasalen.php?otr=46>).



Table 1

**Industrial Production Indices in June 2010<sup>5</sup>**

(Preliminary data)

Economic activities	2005=100	The previous month=100	The same month of 2009=100
<b>Industry</b>	<b>102.6</b>	<b>111.5</b>	<b>103.6</b>
<b>Mining and quarrying</b>	<b>78.2</b>	<b>112.4</b>	<b>113.4</b>
of which:			
Mining of coal and lignite	93.2	122.6	134.7
Mining of metal ores	83.5	109.9	114.6
Other mining and quarrying	68.0	96.7	76.0
<b>Manufacturing</b>	<b>105.8</b>	<b>110.1</b>	<b>104.9</b>
of which:			
Manufacture of food products	126.9	105.8	109.6
Manufacture of beverages	104.4	113.4	88.3
Manufacture of tobacco products	115.8	117.7	103.4
Manufacture of textiles	77.7	105.9	101.0
Manufacture of wearing apparel	68.5	111.1	85.4
Manufacture of leather and related products	80.4	135.2	99.6
Manufacture of wood and of products of wood and cork, except furniture; manufacture of articles of straw and plaiting materials	90.4	115.7	117.0
Manufacture of paper and paper products	153.6	129.4	231.3
Printing and reproduction of recorded media	99.9	91.9	68.0
Manufacture of chemicals and chemical products	93.6	106.7	112.7
Manufacture of basic pharmaceutical products and pharmaceutical preparations	101.7	121.4	126.8
Manufacture of rubber and plastic products	122.9	113.7	106.1
Manufacture of other non-metallic mineral products	99.9	110.7	99.2
Manufacture of basic metals	93.2	91.4	100.1
Manufacture of fabricated metal products, except machinery and equipment	110.5	120.4	125.0
Manufacture of computer, electronic and optical products	101.7	114.5	86.5
Manufacture of electrical equipment	149.0	111.4	115.7
Manufacture of machinery and equipment n.e.c.	120.2	120.9	108.9
Manufacture of motor vehicles, trailers and semi-trailers	175.0	110.4	147.3
Manufacture of other transport equipment	62.7	48.3	62.9
Manufacture of furniture	102.4	114.9	109.7
Other manufacturing	137.3	103.3	76.2
Repair and installation of machinery and equipment	122.7	139.4	149.1
<b>Electricity, gas, steam and air conditioning supply</b>	<b>100.7</b>	<b>117.3</b>	<b>97.6</b>
Electricity, gas, steam and air conditioning supply	100.7	117.3	97.6

<sup>5</sup> In the tables are not included data that according to the Law on Statistics are confidential and in this way they are statistical secrecy.



Table 2

**Industrial Turnover Indices in June 2010<sup>6</sup>**  
(Preliminary data)

Economic activities	2005=100	The previous month=100	The same month of 2009=100
<b>Industry</b>	<b>144.0</b>	<b>108.0</b>	<b>115.9</b>
<b>Mining and quarrying</b>	<b>157.0</b>	<b>124.5</b>	<b>153.8</b>
of which:			
Mining of coal and lignite	144.4	126.0	134.3
Mining of metal ores	225.7	132.1	214.7
Other mining and quarrying	81.0	92.5	68.6
<b>Manufacturing</b>	<b>144.3</b>	<b>107.8</b>	<b>118.7</b>
of which:			
Manufacture of food products	191.2	99.6	113.3
Manufacture of beverages	164.4	114.2	96.4
Manufacture of tobacco products	115.0	112.0	100.3
Manufacture of textiles	96.2	104.9	105.6
Manufacture of wearing apparel	93.6	110.6	90.0
Manufacture of leather and related products	105.7	146.0	124.9
Manufacture of wood and of products of wood and cork, except furniture; manufacture of articles of straw and plaiting materials	114.3	115.0	110.5
Manufacture of paper and paper products	145.2	111.7	177.5
Printing and reproduction of recorded media	97.1	98.7	74.7
Manufacture of chemicals and chemical products	138.2	106.8	116.2
Manufacture of basic pharmaceutical products and pharmaceutical preparations	122.9	120.6	122.3
Manufacture of rubber and plastic products	150.6	116.7	108.4
Manufacture of other non-metallic mineral products	134.0	111.5	98.6
Manufacture of basic metals	159.8	104.4	161.3
Manufacture of fabricated metal products, except machinery and equipment	141.6	111.7	112.6
Manufacture of computer, electronic and optical products	110.7	111.9	98.5
Manufacture of electrical equipment	193.8	108.0	119.0
Manufacture of machinery and equipment n.e.c.	139.1	123.2	108.8
Manufacture of motor vehicles, trailers and semi-trailers	141.4	112.3	143.8
Manufacture of other transport equipment	137.9	62.4	85.5
Manufacture of furniture	125.3	116.9	108.9
Other manufacturing	152.7	112.4	74.1
Repair and installation of machinery and equipment	173.1	133.9	144.5
<b>Electricity, gas, steam and air conditioning supply</b>	<b>138.9</b>	<b>105.5</b>	<b>100.6</b>
Electricity, gas, steam and air conditioning supply	138.9	105.5	100.6

<sup>6</sup> In the tables are not included data that according to the Law on Statistics are confidential and in this way they are statistical secrecy.