



Industrial Production Indexes and Industrial Turnover Indexes in June 2009^{1,2}

1. Industrial Production Indexes³

The preliminary data showed that the Industrial Production Index decreased by 18.7% in June 2009 as compared to June 2008. Decreases were registered in the mining and quarrying - by 32.6%, in the manufacturing - by 21.5%, in the electricity, gas, steam and air conditioning supply - by 3.5%. The production of intermediate goods fell by 31.3%, the production of investment goods - by 27.5%, the production of energy - by 1.7%.

In June 2009, the Industrial Production Index increased by 6.9% as compared to the previous month. The index depends in a great extent on the index in manufacturing industry, where in June 2009 the production rose 6.9% compared to May 2009. The most significant increases of production were seen: in the printing and reproduction of recorded media - by 42.4%, in the manufacture of chemicals and chemical products - by 36.1%, in the manufacture of machinery and equipment - by 24.8%, in the manufacture of rubber and plastic products - by 16.8%. There were decreases in the manufacture of tobacco products by 12.6%, the manufacture of paper and paper products by 8.9%, the manufacture of basic metals by 2.9%. An increase of 11.6% was registered in the electricity, gas, steam and air conditioning supply, while in mining and quarrying a drop of 8.3% was seen.

2. Industrial Turnover Indexes⁴

According to the preliminary data in June 2009 the Industrial Turnover Index decreased by 24.1% compared to June 2008. The manufacturing industry reported a drop of 26.9%, the electricity, gas, steam and air conditioning supply - 9.3%.

In June 2009, the turnover increased by 4.7% as compared to the previous month, while the increase in the manufacturing industry was 6.0% and in the electricity, gas, steam and air conditioning supply - 3.0%.

The final data on Industrial Production and Turnover Indexes can be found in NSI internet web-site: (http://www.nsi.bg/Op_e/Op_e.htm).

¹ June 2009 data are preliminary.

² Since January 2009, Industrial Production Indexes and Industrial Turnover Indexes are calculated according to the new Classification of Economic Activities NACE.BG 2008. At the same time, the base year has been changed and indexes are calculated at 2005 as a base year. Historical data series have been recalculated back to 2000 and they are posted in NSI web-site (http://www.nsi.bg/Op_e/Op_e.htm).

³ Monthly Industrial Production and Industrial turnover indexes measure changes in **production and turnover values** of industrial enterprises. This information can be used to assess the current economic development and for short-term forecasts. Indexes do not measure the actual production level, it aims to measure the average change in value of production between two points of time

Indexes are compiled on the base of information collected through representative sampling survey on industrial enterprises. The sample covers enterprises with annual turnover more than 97% of total turnover in industry.

Industrial production indexes are calculated at constant base year (2005) that is to say they are weighted with the structure of the value added at factor costs in the base year

⁴ The turnover comprises the totals invoiced by the observation units plus taxes on products (excise duty). Turnover indexes are calculated at 2005 as a base year through direct comparison of the values of the turnover at current prices, turnover values are not corrected with the price changes. **The Turnover indexes reflect the development of the value of sales as well as changes in prices.**

Industrial Production Indexes and Industrial Turnover Indexes (2005 = 100)

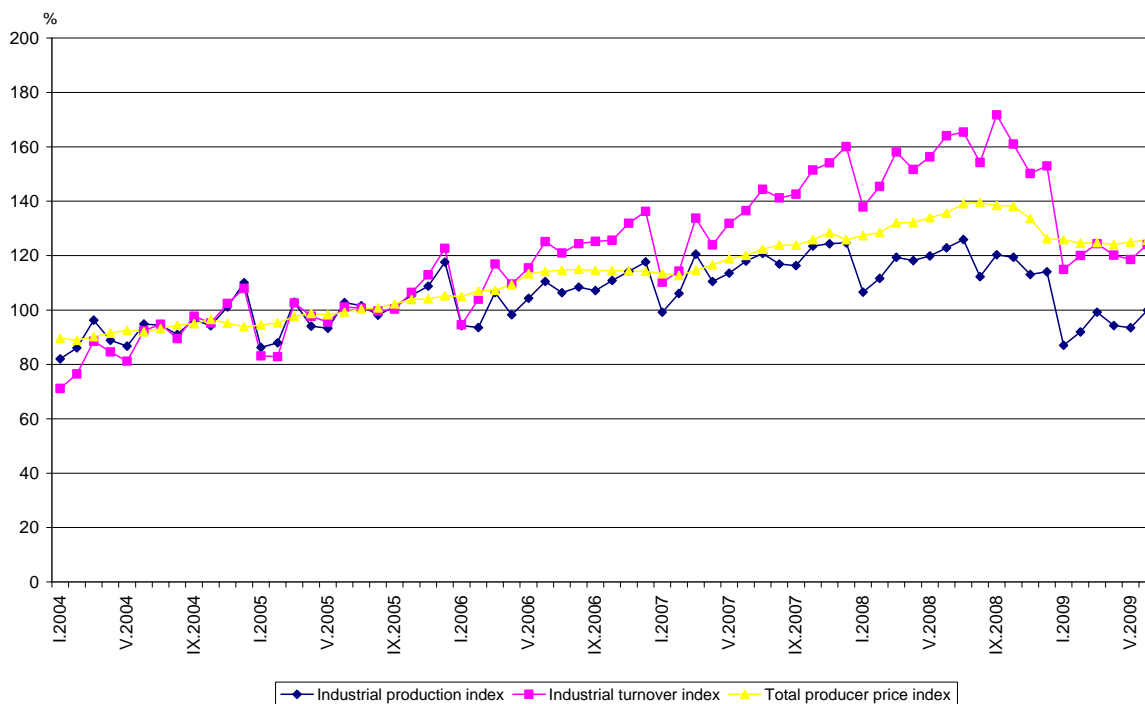


Table 1

Industrial Production Indexes in June 2009⁵
(Preliminary data)

Economic activities	2005=100	Previous month=100	The same month of 2008=100
Industry	99.9	106.9	81.3
Mining and quarrying	65.7	91.7	67.4
of which:			
Mining of coal and lignite	48.4	66.6	43.7
Mining of metal ores	80.8	105.1	95.1
Other mining and quarrying	88.8	101.2	63.4
Manufacturing	102.4	106.9	78.5
of which:			
Manufacture of food products	116.7	109.8	94.4
Manufacture of beverages	118.2	106.6	72.0
Manufacture of tobacco products	111.7	87.4	85.7
Manufacture of textiles	76.4	104.3	64.1
Manufacture of wearing apparel	78.4	113.0	76.5
Manufacture of leather and related products	79.9	106.2	72.2
Manufacture of wood and of products of wood and cork, except furniture; manufacture of articles of straw and plaiting materials	77.5	119.2	60.9
Manufacture of paper and paper products	66.9	91.1	58.8
Printing and reproduction of recorded media	168.3	142.4	153.1
Manufacture of chemicals and chemical products	80.9	136.1	58.2
Manufacture of basic pharmaceutical products and pharmaceutical preparations	81.1	114.4	66.4
Manufacture of rubber and plastic products	118.4	116.8	87.4
Manufacture of other non-metallic mineral products	99.0	102.0	61.2
Manufacture of basic metals	94.6	97.1	75.6
Manufacture of fabricated metal products, except machinery and equipment	86.2	110.7	63.2
Manufacture of computer, electronic and optical products	93.6	97.9	90.0
Manufacture of electrical equipment	125.6	112.6	74.7
Manufacture of machinery and equipment n.e.c.	111.6	124.8	77.2
Manufacture of motor vehicles, trailers and semi-trailers	120.4	112.5	80.6
Manufacture of other transport equipment	103.4	80.5	57.7
Manufacture of furniture	91.7	98.8	59.6
Other manufacturing	181.0	121.2	120.3
Repair and installation of machinery and equipment	82.5	88.0	59.2
Electricity, gas, steam and air conditioning supply	103.8	111.6	96.5
Electricity, gas, steam and air conditioning supply	103.8	111.6	96.5

⁵ In the tables are not included data that according to the Law on Statistics are confidential and in this way they are statistical secrecy.

Industrial Turnover Indexes in June 2009⁶
(Preliminary data)

Economic activities	2005=100	Previous month=100	The same month of 2008=100
Industry	124.1	104.7	75.9
Mining and quarrying	98.0	86.6	58.8
of which:			
Mining of coal and lignite	75.0	64.8	50.9
Mining of metal ores	117.4	92.7	61.2
Other mining and quarrying	118.5	102.2	69.6
Manufacturing	121.5	106.0	73.1
of which:			
Manufacture of food products	168.9	101.7	98.2
Manufacture of beverages	170.4	112.2	86.8
Manufacture of tobacco products	114.9	108.0	106.5
Manufacture of textiles	91.8	108.8	71.7
Manufacture of wearing apparel	102.5	113.1	83.9
Manufacture of leather and related products	85.9	107.5	77.9
Manufacture of wood and of products of wood and cork, except furniture; manufacture of articles of straw and plaiting materials	102.7	108.4	62.2
Manufacture of paper and paper products	80.9	97.7	61.5
Printing and reproduction of recorded media	156.1	125.8	135.2
Manufacture of chemicals and chemical products	119.5	101.4	64.1
Manufacture of basic pharmaceutical products and pharmaceutical preparations	102.2	116.8	80.1
Manufacture of rubber and plastic products	142.1	117.8	75.9
Manufacture of other non-metallic mineral products	135.7	106.1	67.2
Manufacture of basic metals	99.0	98.6	54.3
Manufacture of fabricated metal products, except machinery and equipment	124.9	117.1	76.6
Manufacture of computer, electronic and optical products	105.4	104.5	89.3
Manufacture of electrical equipment	160.3	111.4	83.1
Manufacture of machinery and equipment n.e.c.	128.0	127.5	74.1
Manufacture of motor vehicles, trailers and semi-trailers	98.8	118.9	51.1
Manufacture of other transport equipment	135.4	83.1	96.3
Manufacture of furniture	113.0	97.9	62.0
Other manufacturing	206.9	112.6	155.0
Repair and installation of machinery and equipment	119.7	85.1	57.6
Electricity, gas, steam and air conditioning supply	138.8	103.0	90.7
Electricity, gas, steam and air conditioning supply	138.8	103.0	90.7

⁶ In the tables are not included data that according to the Law on Statistics are confidential and in this way they are statistical secrecy.