



Industrial Production Indices and Industrial Turnover Indices in May 2010¹

1. Industrial Production Indices²

The preliminary data showed that the Industrial Production Index increased by 0.4% in May 2010 as compared to May 2009. An increase was registered in the manufacturing by 2.4%, while in the electricity, gas, steam and air conditioning supply production decreased by 4.7% and in the mining and quarrying industry by 2.9%. The production of intermediate goods rose by 7.9%, the production of investment goods by 1.5%, while the production of energy reported a drop by 5.0%.

In May 2010, the Industrial Production Index decreased by 0.9% as compared to the previous month. A decrease was registered in the electricity, gas, steam and air conditioning supply by 14.3%, while in the mining and quarrying industry the production rose by 2.9% and in the manufacturing by 2.5%. The most significant increases of production in the manufacturing were seen in the manufacture of tobacco products by 36.9%, in the manufacture of other non-metallic mineral products by 17.8%, in the manufacture of beverages by 8.5%, in the manufacture of paper and paper products by 7.0%. There were decreases, in the printing and reproduction of recorded media by 5.2%, in the manufacture of textiles by 2.6%.

2. Industrial Turnover Indices³

According to the preliminary data in May 2010 the Industrial Turnover Index increased by 12.7% compared to May 2009. The increase in the manufacturing was by 16.6%, in the mining and quarrying industry by 11.4%, while in the electricity, gas, steam and air conditioning supply a decrease by 0.6% was registered.

In May 2010, the turnover increased by 1.0% as compared to the previous month. The increase in the manufacturing was by 5.9%, while the electricity, gas, steam and air conditioning supply decreased by 12.9% and the mining and quarrying industry - by 16.3%.

The final data on Industrial Production and Turnover Indices can be found in NSI internet web-site: (<http://www.nsi.bg/otrasalen.php?otr=46>).

¹ May 2010 data are preliminary.

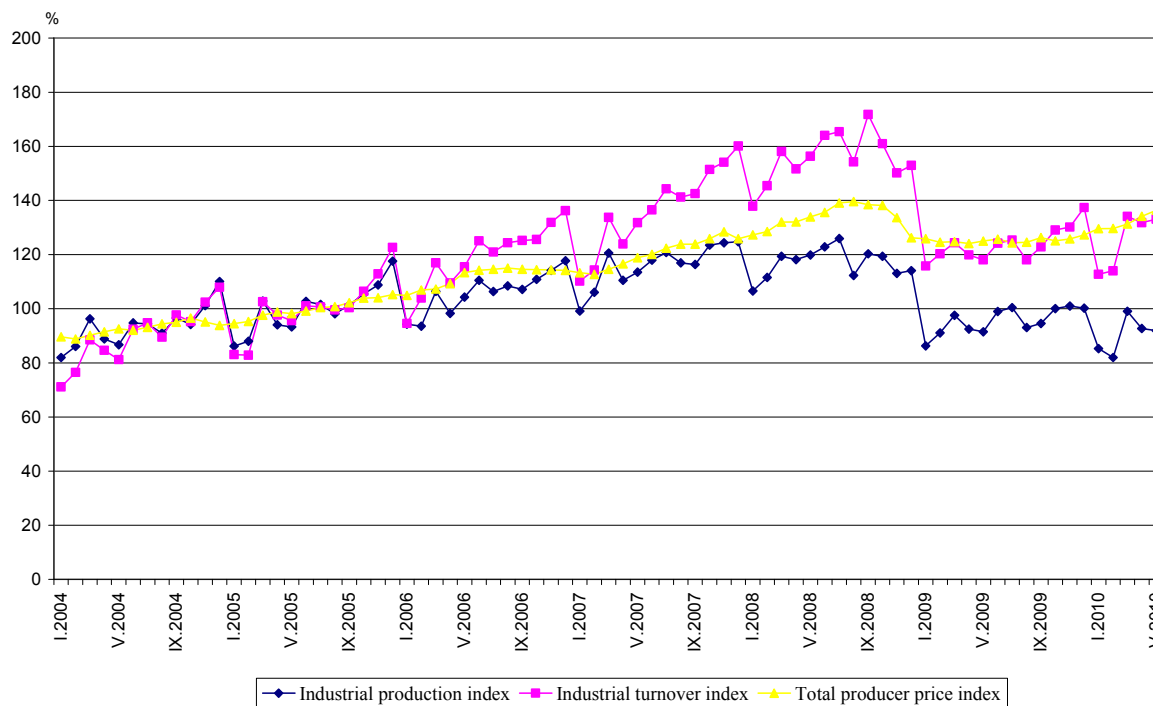
² Monthly Industrial Production and Industrial turnover indices measure changes in **production and turnover values** of industrial enterprises. This information can be used to assess the current economic development and for short-term forecasts. Indices do not measure the actual production level, it aims to measure the average change in value of production between two points of time

Indices are compiled on the base of information collected through representative sampling survey on industrial enterprises. The sample covers enterprises with annual turnover more than 97% of total turnover in industry.

Industrial production indices are calculated at constant base year (2005) that is to say they are weighted with the structure of the value added at factor costs in the base year

³ The turnover comprises the totals invoiced by the observation units plus taxes on products (excise duty). Turnover indices are calculated at 2005 as a base year through direct comparison of the values of the turnover at current prices, turnover values are not corrected with the price changes. **The Turnover indices reflect the development of the value of sales as well as changes in prices.**

Industrial Production Indices and Industrial Turnover Indices (2005 = 100)



Industrial Production Indices in May 2010⁴
(Preliminary data)

Economic activities	2005=100	Previous month=100	The same month of 2009=100
Industry	91.9	99.1	100.4
Mining and quarrying	69.5	102.9	97.1
of which:			
Mining of coal and lignite	76.0	136.0	104.7
Mining of metal ores	75.9	84.1	98.7
Other mining and quarrying	70.1	122.1	79.9
Manufacturing	96.0	102.5	102.4
of which:			
Manufacture of food products	119.9	114.4	113.6
Manufacture of beverages	92.1	108.5	83.7
Manufacture of tobacco products	97.7	136.9	76.4
Manufacture of textiles	73.2	97.4	99.8
Manufacture of wearing apparel	61.0	100.5	87.9
Manufacture of leather and related products	59.2	87.0	78.6
Manufacture of wood and of products of wood and cork, except furniture; manufacture of articles of straw and plaiting materials	78.2	97.8	120.3
Manufacture of paper and paper products	118.7	107.0	161.5
Printing and reproduction of recorded media	106.3	94.8	102.9
Manufacture of chemicals and chemical products	89.1	99.9	144.2
Manufacture of basic pharmaceutical products and pharmaceutical preparations	81.6	99.3	115.5
Manufacture of rubber and plastic products	108.1	102.0	106.6
Manufacture of other non-metallic mineral products	90.6	117.8	93.4
Manufacture of basic metals	101.8	99.1	104.4
Manufacture of fabricated metal products, except machinery and equipment	93.2	103.8	119.4
Manufacture of computer, electronic and optical products	86.5	83.7	84.2
Manufacture of electrical equipment	134.0	102.3	118.1
Manufacture of machinery and equipment n.e.c.	98.8	96.2	110.5
Manufacture of motor vehicles, trailers and semi-trailers	158.7	97.4	148.3
Manufacture of other transport equipment	129.8	187.6	101.0
Manufacture of furniture	89.3	98.2	95.5
Other manufacturing	132.9	97.3	89.0
Repair and installation of machinery and equipment	88.1	82.7	94.0
Electricity, gas, steam and air conditioning supply	85.8	85.7	95.3
Electricity, gas, steam and air conditioning supply	85.8	85.7	95.3

⁴ In the tables are not included data that according to the Law on Statistics are confidential and in this way they are statistical secrecy.

Industrial Turnover Indices in May 2010⁵
(Preliminary data)

Economic activities	2005=100	Previous month=100	The same month of 2009=100
Industry	133.1	101.0	112.7
Mining and quarrying	126.0	83.7	111.4
of which:			
Mining of coal and lignite	114.5	136.6	98.9
Mining of metal ores	170.8	67.4	134.8
Other mining and quarrying	87.4	111.8	75.4
Manufacturing	133.6	105.9	116.6
of which:			
Manufacture of food products	193.0	112.6	116.2
Manufacture of beverages	143.5	112.6	95.2
Manufacture of tobacco products	102.7	113.4	96.5
Manufacture of textiles	91.4	99.8	108.3
Manufacture of wearing apparel	83.6	99.3	92.3
Manufacture of leather and related products	71.7	82.6	89.7
Manufacture of wood and of products of wood and cork, except furniture; manufacture of articles of straw and plaiting materials	99.5	99.7	105.1
Manufacture of paper and paper products	130.3	104.7	157.4
Printing and reproduction of recorded media	96.2	99.1	93.0
Manufacture of chemicals and chemical products	128.7	104.2	109.2
Manufacture of basic pharmaceutical products and pharmaceutical preparations	96.8	98.1	110.5
Manufacture of rubber and plastic products	129.2	101.3	107.1
Manufacture of other non-metallic mineral products	119.4	107.4	93.4
Manufacture of basic metals	152.8	107.7	152.2
Manufacture of fabricated metal products, except machinery and equipment	127.3	108.0	118.0
Manufacture of computer, electronic and optical products	96.7	89.8	95.6
Manufacture of electrical equipment	179.5	103.6	123.5
Manufacture of machinery and equipment n.e.c.	112.8	96.8	112.4
Manufacture of motor vehicles, trailers and semi-trailers	125.9	99.1	151.1
Manufacture of other transport equipment	221.2	144.7	129.7
Manufacture of furniture	107.5	98.7	92.4
Other manufacturing	135.8	92.9	73.9
Repair and installation of machinery and equipment	129.5	84.4	92.1
Electricity, gas, steam and air conditioning supply	131.8	87.1	99.4
Electricity, gas, steam and air conditioning supply	131.8	87.1	99.4

⁵ In the tables are not included data that according to the Law on Statistics are confidential and in this way they are statistical secrecy.