

Industrial Production Indexes and Industrial Turnover Indexes in April 2009^{1,2}

1. Industrial Production Indexes³

In April 2009, by preliminary data Industrial Production Index decreased by 4.7 per cent as compared to the previous month.

Industrial Production Index in manufacturing industry, in April 2009 rose 2.6 per cent compared to March 2009. The most significant increases of production were: 52.7 per cent in manufacture of tobacco products, 11.7 per cent in manufacture of other non-metallic mineral products, 9.6 per cent in manufacture of fabricated metal products, except machinery and equipment, 9.0 per cent in manufacture of beverages. There were decreases in manufacture of basic metals by 16.4 per cent, manufacture of textiles by 4.5 per cent. Considerable decrease by 25.2 per cent was registered in electricity, gas, steam and air conditioning supply.

In April 2009, industrial production decreased by 20.0 per cent as compared to April 2008. Production of intermediate goods fell by 31.7 per cent, production of investment goods - by 31.0 per cent and production of energy - by 7.3 per cent.

2. Industrial Turnover Indexes⁴

By preliminary data in April 2009 Industrial Turnover Index decreased by 3.8 per cent as compared to the previous month.

In April 2009, the turnover in manufacturing industry rose 7.0 per cent as compared to March 2009, while in electricity, gas, steam and air conditioning supply there was decrease by 28.5 per cent.

Total industrial turnover in April 2009 decreased by 20.7 per cent compared to April 2008. Manufacturing industry decreased by 26.6 per cent, while electricity, gas, steam and air conditioning supply increased by 7.1 per cent.

¹ April 2009 data are preliminary.

² Since January 2009, Industrial Production Indexes and Industrial Turnover Indexes are calculated according to the new Classification of Economic Activities NACE.BG 2008. At the same time, the base year has been changed and indexes are calculated at 2005 as a base year. Historical data series have been recalculated back to 2000 and they are posted in NSI web-site (http://www.nsi.bg/Op_e/Op_e.htm).

³ Monthly Industrial Production and Industrial turnover indexes measure changes in **production and turnover values** of industrial enterprises. This information can be used to assess the current economic development and for short-term forecasts. Indexes do not measure the actual production level, it aims to measure the average change in value of production between two points of time

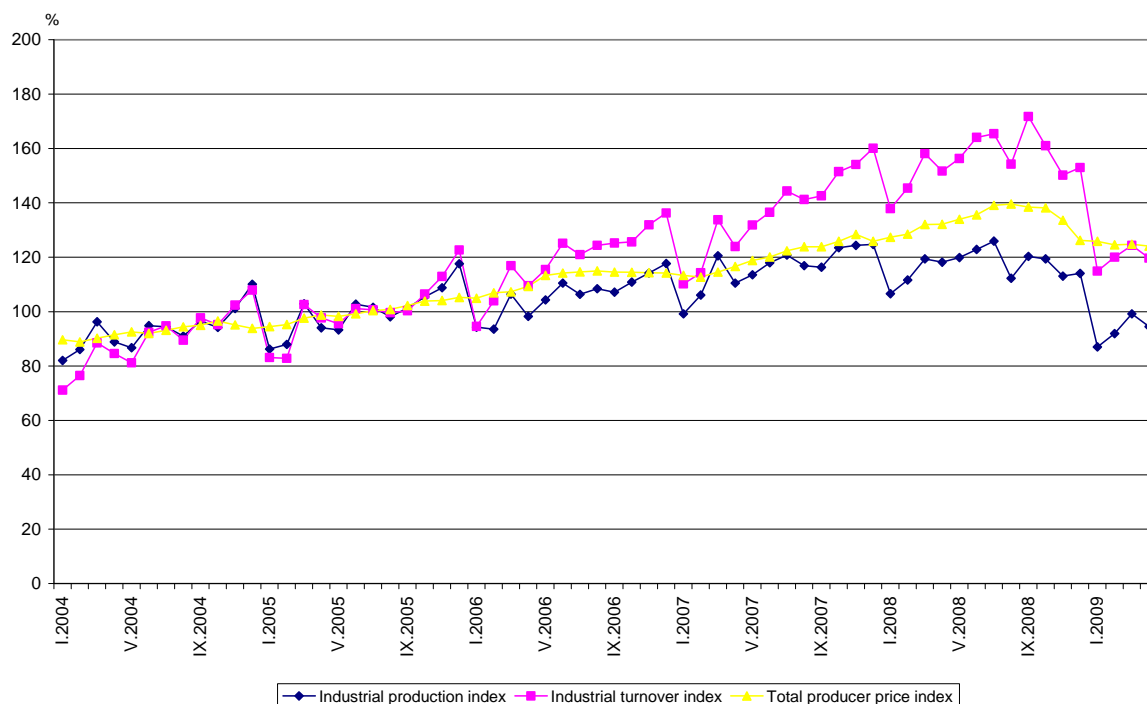
Indexes are compiled on the base of information collected through representative sampling survey on industrial enterprises. The sample covers enterprises with annual turnover more than 97% of total turnover in industry.

Industrial production indexes are calculated at constant base year (2005) that is to say they are weighted with the structure of the value added at factor costs in the base year

⁴ The turnover comprises the totals invoiced by the observation units plus taxes on products (excise duty). Turnover indexes are calculated at 2005 as a base year through direct comparison of the values of the turnover at current prices, turnover values are not corrected with the price changes. **The Turnover indexes reflect the development of the value of sales as well as changes in prices.**

Final data on Industrial Production and Turnover indexes can be found in NSI internet web-site: (http://www.nsi.bg/Op_e/Op_e.htm).

Industrial Production Indexes and Industrial Turnover Indexes (2005 = 100)



Industrial Production Indexes in April 2009⁵
(Preliminary data)

Economic activities	2005=100	Previous month=100	The same month of 2008=100
Industry	94.5	95.3	80.0
Mining and quarrying	71.0	99.2	79.0
of which:			
Mining of coal and lignite	77.5	84.7	85.7
Mining of metal ores	72.2	118.5	84.1
Other mining and quarrying	87.1	99.3	68.9
Manufacturing	95.8	102.6	77.8
of which:			
Manufacture of food products	112.2	101.8	96.0
Manufacture of beverages	98.3	109.0	76.2
Manufacture of tobacco products	86.8	152.7	133.5
Manufacture of textiles	80.3	95.5	65.5
Manufacture of wearing apparel	70.7	103.0	73.0
Manufacture of leather and related products	68.8	89.5	70.6
Manufacture of wood and of products of wood and cork, except furniture; manufacture of articles of straw and plaiting materials	65.4	103.7	57.5
Manufacture of paper and paper products	79.6	105.4	65.4
Printing and reproduction of recorded media	116.0	100.8	97.7
Manufacture of chemicals and chemical products	76.0	101.0	65.2
Manufacture of basic pharmaceutical products and pharmaceutical preparations	74.8	94.9	80.4
Manufacture of rubber and plastic products	105.7	98.4	80.2
Manufacture of other non-metallic mineral products	104.4	111.7	65.3
Manufacture of basic metals	91.8	83.6	67.1
Manufacture of fabricated metal products, except machinery and equipment	92.5	109.6	61.4
Manufacture of computer, electronic and optical products	86.4	105.6	93.0
Manufacture of electrical equipment	123.9	102.6	78.5
Manufacture of machinery and equipment n.e.c.	104.4	98.2	70.3
Manufacture of motor vehicles, trailers and semi-trailers	93.2	101.6	64.8
Manufacture of other transport equipment	79.0	114.6	66.0
Manufacture of furniture	92.9	92.2	65.9
Other manufacturing	133.6	114.1	91.7
Repair and installation of machinery and equipment	87.9	101.6	74.3
Electricity, gas, steam and air conditioning supply	99.5	74.8	86.5
Electricity, gas, steam and air conditioning supply	99.5	74.8	86.5

⁵ In the tables are not included data that according to the Law on Statistics are confidential and in this way they are statistical secrecy.

Industrial Turnover Indexes in April 2009⁶
(Preliminary data)

Economic activities	2005=100	Previous month=100	The same month of 2008=100
Industry	119.7	96.2	79.3
Mining and quarrying	110.9	100.9	73.2
of which:			
Mining of coal and lignite	120.2	86.0	107.6
Mining of metal ores	115.7	110.5	63.5
Other mining and quarrying	122.0	113.1	73.8
Manufacturing	113.8	107.0	73.4
of which:			
Manufacture of food products	152.2	101.8	89.3
Manufacture of beverages	138.2	111.0	87.2
Manufacture of tobacco products	127.8	168.2	127.3
Manufacture of textiles	92.8	98.6	71.7
Manufacture of wearing apparel	94.8	106.8	82.8
Manufacture of leather and related products	76.4	93.7	78.7
Manufacture of wood and of products of wood and cork, except furniture; manufacture of articles of straw and plaiting materials	95.3	109.7	67.2
Manufacture of paper and paper products	93.4	106.7	69.8
Printing and reproduction of recorded media	121.3	101.8	104.4
Manufacture of chemicals and chemical products	122.8	97.4	82.5
Manufacture of basic pharmaceutical products and pharmaceutical preparations	89.0	100.6	94.3
Manufacture of rubber and plastic products	133.0	110.0	76.5
Manufacture of other non-metallic mineral products	138.7	108.1	71.6
Manufacture of basic metals	109.4	109.4	56.6
Manufacture of fabricated metal products, except machinery and equipment	126.7	105.9	76.4
Manufacture of computer, electronic and optical products	103.9	115.7	97.7
Manufacture of electrical equipment	149.0	101.3	77.2
Manufacture of machinery and equipment n.e.c.	120.2	98.8	67.7
Manufacture of motor vehicles, trailers and semi- trailers	79.0	86.2	41.7
Manufacture of other transport equipment	121.4	121.3	114.5
Manufacture of furniture	114.9	95.4	76.1
Other manufacturing	159.3	115.0	106.8
Repair and installation of machinery and equipment	120.4	95.8	78.1
Electricity, gas, steam and air conditioning supply	145.6	71.5	107.1
Electricity, gas, steam and air conditioning supply	145.6	71.5	107.1

⁶ In the tables are not included data that according to the Law on Statistics are confidential and in this way they are statistical secrecy.