

Industrial Production Indexes and Industrial Turnover Indexes in March 2009^{1,2}

1. Industrial Production Indexes³

In March 2009, by preliminary data Industrial Production Index increased by 7.7 per cent as compared to the previous month.

Total Industrial Production Index depends in a great extent of the index in manufacturing industry, where in March 2009 production rose 8.6 per cent compared to February 2009. The most significant increases of production were: 33.0 per cent in manufacture of beverages, 31.4 per cent in manufacture of rubber and plastic products, 17.7 per cent in manufacture of tobacco products, 9.6 per cent in manufacture of basic metals. There were decreases in manufacture of chemicals and chemical products by 19.2 per cent, in manufacture of wearing apparel by 12.1 per cent and in manufacture of fabricated metal products, except machinery and equipment by 9.5 per cent.

In March 2009, industrial production decreased by 17.1 per cent as compared to March 2008. Production of investment products fell by 35.3 per cent, production of intermediate products - by 31.0 per cent and production of energy products – increased by 7.1 per cent.

2. Industrial Turnover Indexes⁴

By preliminary data in March 2009 Industrial Turnover Index increased by 4.0 per cent as compared to the previous month.

In March 2009, the turnover in manufacturing industry rose 6.4 per cent as compared to February 2009, while in electricity, gas, steam and air conditioning supply there was decrease by 0.4 per cent.

Total industrial turnover in March 2009 decreased by 20.7 per cent compared to March 2008. Manufacturing industry decreased by 30.8 per cent, while electricity, gas, steam and air conditioning supply increased by 17.3 per cent.

¹ March 2009 data are preliminary.

² Since January 2009, Industrial Production Indexes and Industrial Turnover Indexes are calculated according to the new Classification of Economic Activities NACE.BG 2008. At the same time, the base year has been changed and indexes are calculated at 2005 as a base year. Historical data series have been recalculated back to 2000 and they are posted in NSI web-site (http://www.nsi.bg/Index_e.htm).

³ Monthly Industrial Production and Industrial turnover indexes measure changes in **production and turnover values** of industrial enterprises. This information can be used to assess the current economic development and for short-term forecasts. Indexes do not measure the actual production level, it aims to measure the average change in value of production between two points of time

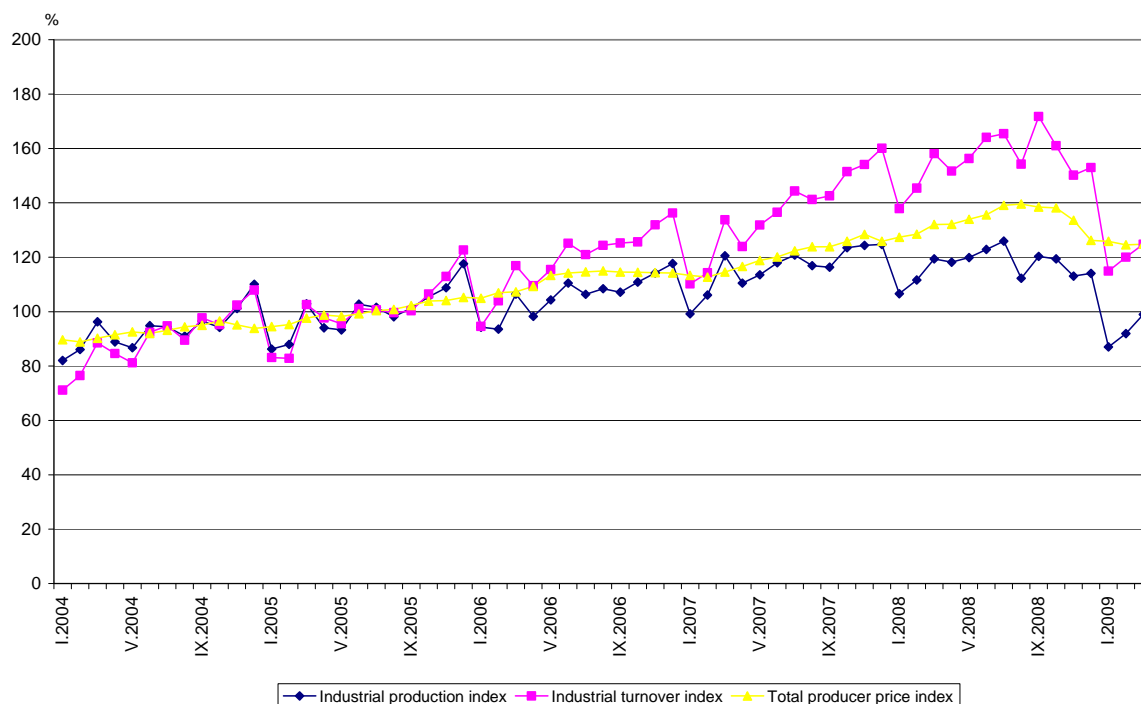
Indexes are compiled on the base of information collected through representative sampling survey on industrial enterprises. The sample covers enterprises with annual turnover more than 97% of total turnover in industry.

Industrial production indexes are calculated at constant base year (2005) that is to say they are weighted with the structure of the value added at factor costs in the base year

⁴ The turnover comprises the totals invoiced by the observation units plus taxes on products (excise duty). Turnover indexes are calculated at 2005 as a base year through direct comparison of the values of the turnover at current prices, turnover values are not corrected with the price changes. **The Turnover indexes reflect the development of the value of sales as well as changes in prices.**

Final data on Industrial Production and Turnover indexes can be found in NSI internet web-site: (http://www.nsi.bg/Index_e.htm).

Industrial Production Indexes and Industrial Turnover Indexes (2005 = 100)



Industrial Production Indexes in March 2009⁵
(Preliminary data)

Economic activities	2005=100	Previous month=100	The same month of 2008=100
Industry	99.0	107.7	82.9
Mining and quarrying	71.1	103.4	76.2
of which:			
Mining of coal and lignite	92.1	92.1	90.5
Mining of metal ores	60.7	114.6	72.9
Other mining and quarrying	83.9	105.5	66.3
Manufacturing	93.0	108.6	75.9
of which:			
Manufacture of food products	109.2	106.0	94.5
Manufacture of beverages	91.8	133.0	77.0
Manufacture of tobacco products	58.1	117.7	110.7
Manufacture of textiles	83.5	98.4	65.6
Manufacture of wearing apparel	68.4	87.9	65.6
Manufacture of leather and related products	72.7	85.2	62.2
Manufacture of wood and of products of wood and cork, except furniture; manufacture of articles of straw and plaiting materials	62.9	106.3	50.5
Manufacture of paper and paper products	74.7	101.3	65.5
Printing and reproduction of recorded media	116.9	92.6	113.2
Manufacture of chemicals and chemical products	72.1	80.8	55.2
Manufacture of basic pharmaceutical products and pharmaceutical preparations	82.8	108.6	80.3
Manufacture of rubber and plastic products	120.3	131.4	88.7
Manufacture of other non-metallic mineral products	95.9	117.6	63.4
Manufacture of basic metals	105.5	109.6	79.2
Manufacture of fabricated metal products, except machinery and equipment	85.6	90.5	62.9
Manufacture of computer, electronic and optical products	81.0	105.4	80.9
Manufacture of electrical equipment	121.7	96.9	78.5
Manufacture of machinery and equipment n.e.c.	101.6	98.2	72.6
Manufacture of motor vehicles, trailers and semi-trailers	89.2	127.7	64.0
Manufacture of other transport equipment	70.5	102.8	39.6
Manufacture of furniture	98.8	115.1	69.3
Other manufacturing	117.5	99.7	80.0
Repair and installation of machinery and equipment	75.9	95.7	56.2
Electricity, gas, steam and air conditioning supply	133.2	107.6	109.0
Electricity, gas, steam and air conditioning supply	133.2	107.6	109.0

⁵ In the tables are not included data that according to the Law on Statistics are confidential and in this way they are statistical secrecy.

Industrial Turnover Indexes in March 2009⁶
(Preliminary data)

Economic activities	2005=100	Previous month=100	The same month of 2008=100
Industry	124.8	104.0	79.3
Mining and quarrying	110.0	101.9	70.9
of which:			
Mining of coal and lignite	140.7	94.7	110.9
Mining of metal ores	104.4	103.6	55.5
Other mining and quarrying	107.8	110.1	73.8
Manufacturing	106.8	106.4	69.2
of which:			
Manufacture of food products	149.6	100.0	87.2
Manufacture of beverages	124.7	130.6	89.3
Manufacture of tobacco products	75.6	189.9	124.9
Manufacture of textiles	93.9	110.6	75.5
Manufacture of wearing apparel	89.4	87.2	72.8
Manufacture of leather and related products	80.1	82.7	72.9
Manufacture of wood and of products of wood and cork, except furniture; manufacture of articles of straw and plaiting materials	86.6	111.9	60.6
Manufacture of paper and paper products	87.1	102.2	69.2
Printing and reproduction of recorded media	120.7	95.5	113.4
Manufacture of chemicals and chemical products	125.2	88.6	77.2
Manufacture of basic pharmaceutical products and pharmaceutical preparations	88.7	90.1	76.6
Manufacture of rubber and plastic products	138.6	124.9	82.1
Manufacture of other non-metallic mineral products	129.3	120.6	72.1
Manufacture of basic metals	100.0	89.5	50.1
Manufacture of fabricated metal products, except machinery and equipment	118.7	91.0	80.4
Manufacture of computer, electronic and optical products	89.8	104.2	74.8
Manufacture of electrical equipment	149.2	101.2	78.0
Manufacture of machinery and equipment n.e.c.	124.4	109.7	73.7
Manufacture of motor vehicles, trailers and semi-trailers	91.5	123.1	50.2
Manufacture of other transport equipment	101.1	109.3	59.3
Manufacture of furniture	121.1	110.0	81.0
Other manufacturing	138.1	110.5	108.0
Repair and installation of machinery and equipment	112.1	99.5	57.7
Electricity, gas, steam and air conditioning supply	203.8	99.6	117.3
Electricity, gas, steam and air conditioning supply	203.8	99.6	117.3

⁶ In the tables are not included data that according to the Law on Statistics are confidential and in this way they are statistical secrecy.