

## Industrial Production Indices and Industrial Turnover Indices in February 2010<sup>1</sup>

### 1. Industrial Production Indices<sup>2</sup>

The preliminary data showed that the Industrial Production Index decreased by 9.1% in February 2010 as compared to February 2009. Decrease was registered in the manufacturing by 13.7%, in the electricity, gas, steam and air conditioning supply by 0.6% and in the mining and quarrying industry the production increased by 2.0%. The production of energy fell by 12.4%, the production of intermediate goods by 9.2%, while the production of investment goods rose by 2.5%.

In February 2010, the Industrial Production Index decreased by 2.9% as compared to the previous month. Decreases were registered in the electricity, gas, steam and air conditioning supply by 4.1%, in the manufacturing by 3.4%, while in the mining and quarrying industry the production rose by 3.6%. The most significant decreases of production were seen in the manufacture of tobacco products by 22.3%, in the manufacture of chemicals and chemical products by 18.0%, in the manufacture of rubber and plastic products by 3.1%. There were increases in the manufacture of textiles by 38.8%, in the manufacture of basic metals by 14.3%, in the manufacture of paper and paper products by 8.5%.

### 2. Industrial Turnover Indices<sup>3</sup>

According to the preliminary data in February 2010 the Industrial Turnover Index decreased by 5.1% compared to February 2009. The electricity, gas, steam and air conditioning supply reported a drop of 11.1%, the manufacturing - of 2.7% and in the mining and quarrying industry an increase by 2.8% was seen.

In February 2010, the turnover increased by 1.3% as compared to the previous month. The increase in the manufacturing was by 5.8%, while in the electricity, gas, steam and air conditioning supply a decrease by 8.0% was registered.

The final data on Industrial Production and Turnover Indices can be found in NSI internet web-site: ([http://www.nsi.bg/Op\\_e/Op\\_e.htm](http://www.nsi.bg/Op_e/Op_e.htm)).

---

<sup>1</sup> February 2010 data are preliminary.

<sup>2</sup> Monthly Industrial Production and Industrial turnover indices measure changes in **production and turnover values** of industrial enterprises. This information can be used to assess the current economic development and for short-term forecasts. Indices do not measure the actual production level, it aims to measure the average change in value of production between two points of time

Indices are compiled on the base of information collected through representative sampling survey on industrial enterprises. The sample covers enterprises with annual turnover more than 97% of total turnover in industry.

Industrial production indices are calculated at constant base year (2005) that is to say they are weighted with the structure of the value added at factor costs in the base year

<sup>3</sup> The turnover comprises the totals invoiced by the observation units plus taxes on products (excise duty). Turnover indices are calculated at 2005 as a base year through direct comparison of the values of the turnover at current prices, turnover values are not corrected with the price changes. **The Turnover indices reflect the development of the value of sales as well as changes in prices.**

## Industrial Production Indices and Industrial Turnover Indices (2005 = 100)

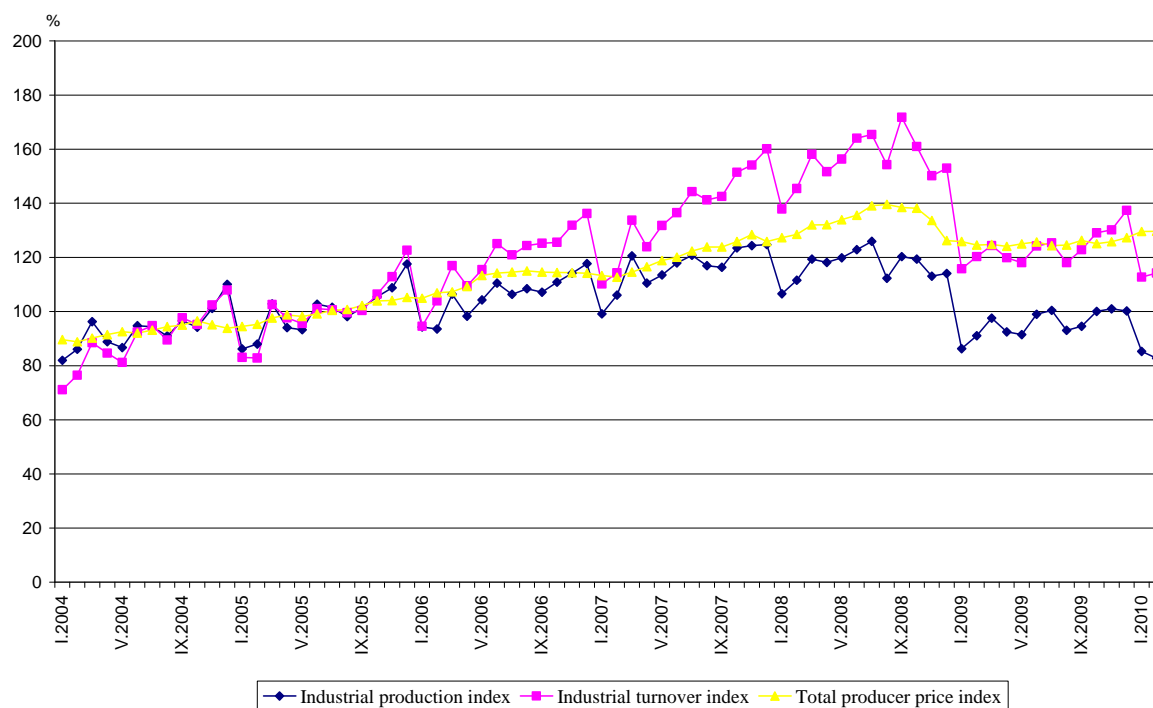


Table 1

**Industrial Production Indices in February 2010<sup>4</sup>**  
(Preliminary data)

| Economic activities   | 2005=100 | Previous month=100 | The same month of 2009=100 |
|---|----------|--------------------|----------------------------|
| <b>Industry</b>   | 82.8     | 97.1               | 90.9                       |
| <b>Mining and quarrying</b>   | 70.2     | 103.6              | 102.0                      |
| of which:   |          |                    |                            |
| Mining of coal and lignite  | 99.6     | 98.2               | 99.5                       |
| Mining of metal ores  | 65.2     | 106.1              | 123.0                      |
| Other mining and quarrying  | 55.5     | 119.9              | 69.7                       |
| <b>Manufacturing</b>  | 73.0     | 96.6               | 86.3                       |
| of which:   |          |                    |                            |
| Manufacture of food products  | 95.2     | 104.0              | 92.9                       |
| Manufacture of beverages  | 52.9     | 102.5              | 76.6                       |
| Manufacture of tobacco products   | 42.7     | 77.7               | 86.5                       |
| Manufacture of textiles   | 63.6     | 138.8              | 74.9                       |
| Manufacture of wearing apparel  | 63.5     | 100.2              | 81.7                       |
| Manufacture of leather and related products   | 86.0     | 110.7              | 100.9                      |
| Manufacture of wood and of products of wood and cork, except furniture; manufacture of articles of straw and plaiting materials | 61.1     | 118.5              | 103.2                      |
| Manufacture of paper and paper products   | 95.9     | 108.5              | 130.0                      |
| Printing and reproduction of recorded media   | 96.9     | 102.9              | 88.0                       |
| Manufacture of chemicals and chemical products  | 71.5     | 82.0               | 81.0                       |
| Manufacture of basic pharmaceutical products and pharmaceutical preparations  | 83.2     | 112.4              | 111.4                      |
| Manufacture of rubber and plastic products  | 80.4     | 96.9               | 87.7                       |
| Manufacture of other non-metallic mineral products  | 50.8     | 116.3              | 60.5                       |
| Manufacture of basic metals   | 97.6     | 114.3              | 101.4                      |
| Manufacture of fabricated metal products, except machinery and equipment  | 104.6    | 188.6              | 109.5                      |
| Manufacture of computer, electronic and optical products  | 87.4     | 105.8              | 108.0                      |
| Manufacture of electrical equipment   | 122.3    | 93.6               | 97.3                       |
| Manufacture of machinery and equipment n.e.c.   | 88.9     | 116.0              | 86.0                       |
| Manufacture of motor vehicles, trailers and semi-trailers   | 145.6    | 109.0              | 208.6                      |
| Manufacture of other transport equipment  | 56.9     | 136.4              | 83.0                       |
| Manufacture of furniture  | 79.2     | 110.9              | 93.0                       |
| Other manufacturing   | 111.6    | 115.2              | 94.7                       |
| Repair and installation of machinery and equipment  | 90.1     | 130.5              | 113.4                      |
| <b>Electricity, gas, steam and air conditioning supply</b>  | 122.9    | 95.9               | 99.4                       |
| Electricity, gas, steam and air conditioning supply   | 122.9    | 95.9               | 99.4                       |

<sup>4</sup> In the tables are not included data that according to the Law on Statistics are confidential and in this way they are statistical secrecy.

**Industrial Turnover Indices in February 2010<sup>5</sup>**  
(Preliminary data)

| Economic activities   | 2005=100 | Previous month=100 | The same month of 2009=100 |
|---|----------|--------------------|----------------------------|
| <b>Industry</b>   | 114.2    | 101.3              | 94.9                       |
| <b>Mining and quarrying</b>   | 110.9    | 103.0              | 102.8                      |
| of which:   |          |                    |                            |
| Mining of coal and lignite  | 150.0    | 98.8               | 100.9                      |
| Mining of metal ores  | 126.7    | 106.9              | 125.7                      |
| Other mining and quarrying  | 57.0     | 102.0              | 58.2                       |
| <b>Manufacturing</b>  | 98.2     | 105.8              | 97.3                       |
| of which:   |          |                    |                            |
| Manufacture of food products  | 158.6    | 115.9              | 103.5                      |
| Manufacture of beverages  | 82.5     | 116.2              | 86.4                       |
| Manufacture of tobacco products   | 37.7     | 91.5               | 94.7                       |
| Manufacture of textiles   | 75.9     | 125.9              | 89.4                       |
| Manufacture of wearing apparel  | 85.5     | 98.6               | 83.5                       |
| Manufacture of leather and related products   | 107.7    | 117.6              | 111.1                      |
| Manufacture of wood and of products of wood and cork, except furniture; manufacture of articles of straw and plaiting materials | 74.9     | 125.0              | 96.8                       |
| Manufacture of paper and paper products   | 105.3    | 116.5              | 123.6                      |
| Printing and reproduction of recorded media   | 85.7     | 99.7               | 81.2                       |
| Manufacture of chemicals and chemical products  | 119.5    | 112.3              | 84.0                       |
| Manufacture of basic pharmaceutical products and pharmaceutical preparations  | 97.3     | 118.9              | 100.5                      |
| Manufacture of rubber and plastic products  | 95.1     | 103.3              | 85.7                       |
| Manufacture of other non-metallic mineral products  | 70.4     | 126.8              | 65.7                       |
| Manufacture of basic metals   | 153.2    | 145.2              | 137.2                      |
| Manufacture of fabricated metal products, except machinery and equipment  | 118.6    | 151.1              | 90.8                       |
| Manufacture of computer, electronic and optical products  | 95.7     | 114.6              | 111.0                      |
| Manufacture of electrical equipment   | 161.6    | 97.1               | 109.5                      |
| Manufacture of machinery and equipment n.e.c.   | 103.5    | 114.1              | 91.3                       |
| Manufacture of motor vehicles, trailers and semi-trailers   | 114.3    | 114.4              | 153.6                      |
| Manufacture of other transport equipment  | 132.7    | 166.9              | 122.5                      |
| Manufacture of furniture  | 95.8     | 112.8              | 87.6                       |
| Other manufacturing   | 107.9    | 130.0              | 86.3                       |
| Repair and installation of machinery and equipment  | 142.5    | 145.7              | 126.4                      |
| <b>Electricity, gas, steam and air conditioning supply</b>  | 181.7    | 92.0               | 88.9                       |
| Electricity, gas, steam and air conditioning supply   | 181.7    | 92.0               | 88.9                       |

<sup>5</sup> In the tables are not included data that according to the Law on Statistics are confidential and in this way they are statistical secrecy.