



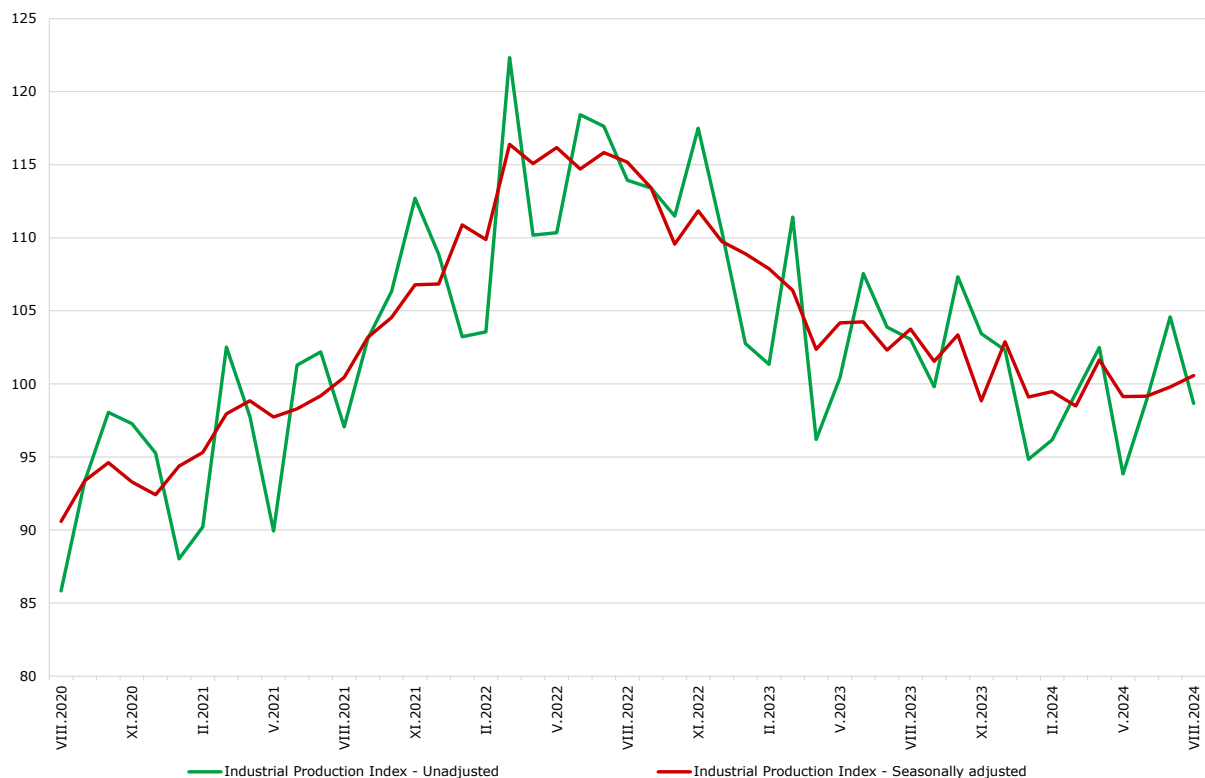
**From July 2024, NSI started publishing Industrial Production Indices by base year 2021 = 100 in accordance with the requirements of Regulation (EU) 2019/2152 of the European Parliament and of the Council for European Business Statistics and Commission Implementing Regulation (EU) 2020/1197.**

### INDUSTRIAL PRODUCTION INDICES IN AUGUST 2024

The Industrial Production Index increased by 0.8% in August 2024 compared to the previous month. The data are preliminary and seasonally adjusted.

In comparison with August 2023, a decrease of 2.6% was registered in the calendar-adjusted Industrial Production Index.

**Figure 1. Industrial Production Indices (2021 = 100)**



## INDUSTRIAL PRODUCTION INDICES IN AUGUST 2024

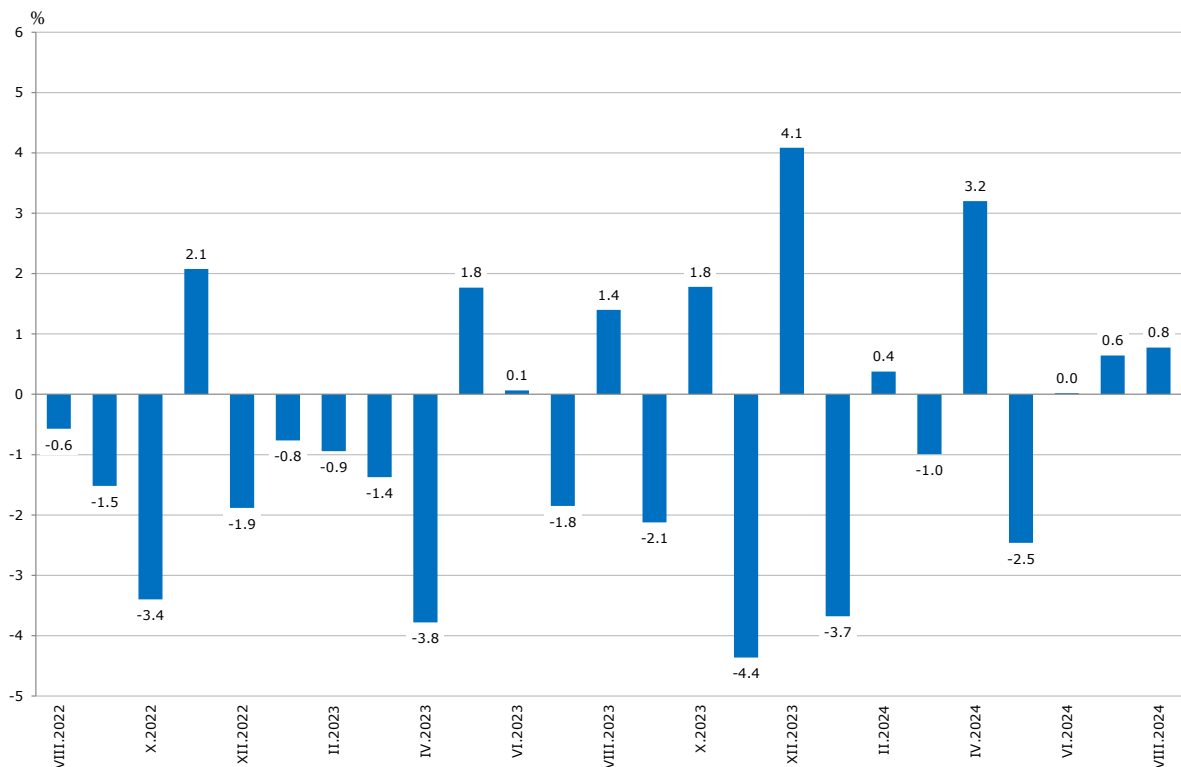
### Monthly changes

In August 2024, compared to the previous month, an increase was seen in the mining and quarrying industry - by 22.1%, and in the manufacturing - by 2.3%, while a decrease was registered in the electricity, gas, steam and air conditioning supply - by 11.8%.

More significant growth in the manufacturing was reported in the manufacture of other transport equipment - by 47.0%, in the manufacture of tobacco products - by 16.1%, and in the manufacture of chemicals and chemical products - by 15.8%.

A decrease was registered in the manufacture of other non-metallic mineral products - by 9.4%, in the manufacture of paper and paper products- by 9.0%, and in the manufacture of textiles - by 8.6%.

**Figure 2. Changes of Industrial Production Indices compared to the previous month  
(Seasonally adjusted)**



## INDUSTRIAL PRODUCTION INDICES IN AUGUST 2024

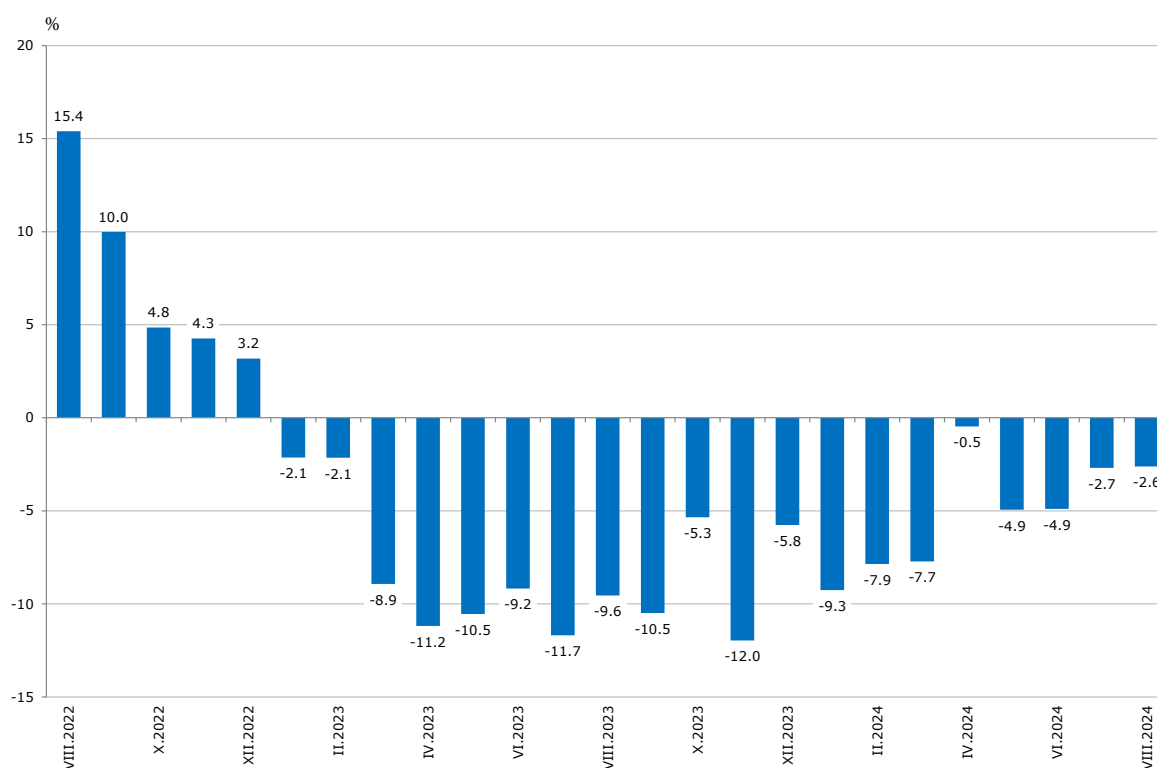
### Annual changes

On an annual basis, a drop of the Industrial Production Index was observed in the electricity, gas, steam and air conditioning supply - by 10.0%, and in the manufacturing - by 1.7%, while an increase was registered in the mining and quarrying industry - by 15.3%.

The most significant production decrease in the manufacturing, compared to the same month of the previous year, was seen in the other manufacturing - by 32.1%, in the manufacture of textiles - by 24.6%, in the manufacture of leather and related products - by 21.7%, and in the manufacture of tobacco products - by 19.7%.

A growth was registered in the manufacture of basic pharmaceutical products and pharmaceutical preparations - by 20.1%, in the manufacture of chemicals and chemical products - by 18.8%, and in the manufacture of fabricated metal products, except machinery and equipment - by 15.1%.

**Figure 3. Changes of Industrial Production Indices compared to the same month of the previous year (Calendar-adjusted)**



### **Methodological notes**

Monthly indices of industrial production are calculated in accordance with the requirements of Regulation (EU) 2019/2152 of the European Parliament and of the Council on European Business Statistics.

The Monthly Industrial Production and Industrial Turnover Indices measure changes in production and turnover values of industrial enterprises. This information can be used to assess the current economic development and for short-term forecasts. Indices do not measure the actual production level; they aim to measure the average change in the value of production between two points in time. Indices are compiled based on information collected through a representative sampling survey on industrial enterprises. The sample covers enterprises with an annual turnover of more than 97% of the total turnover in the industry.

Industrial Production Indices are calculated at a constant base year that is to say they are weighted with the structure of the value added at factor costs in the base year.

Seasonal adjustment is a statistical method, which eliminates the seasonal component of the time series.

Calendar adjustment is an adjustment for variations caused by calendar effects, different number of calendar and working days in the months, national holidays and outliers (for example, the presence of more non-working days in May could contribute to the decline in production in some activities).

Since July 2024, all dynamic rows have been recalculated based on the 2021 base year and have been published in the IS Infostat.

# INDUSTRIAL PRODUCTION INDICES IN AUGUST 2024

## Annex

**Table 1**

### Changes of Industrial Production Indices compared to the previous month<sup>1</sup>

(Per cent)

Economic activities	NACE.BG - 2008	2024					
		III	IV	V	VI	VII	VIII*
<b>Industry</b>	<b>B_TO_E36</b>	<b>-1.0</b>	<b>3.2</b>	<b>-2.5</b>	<b>0.0</b>	<b>0.6</b>	<b>0.8</b>
<b>Mining and quarrying</b>	<b>B</b>	<b>1.9</b>	<b>3.7</b>	<b>-10.3</b>	<b>1.6</b>	<b>8.5</b>	<b>22.1</b>
Mining of coal and lignite	B05	35.7	-0.1	-17.7	20.7	25.8	-17.6
Extraction of crude petroleum and natural gas	B06	..	..	..	..	..	..
Mining of metal ores	B07	-2.6	4.4	-4.9	-1.3	-0.3	8.3
Other mining and quarrying	B08	-8.2	1.8	-9.6	-2.1	1.1	-0.6
Mining support service activities	B09	..	..	..	..	..	..
<b>Manufacturing</b>	<b>C</b>	<b>-1.3</b>	<b>0.6</b>	<b>-2.8</b>	<b>2.6</b>	<b>-0.7</b>	<b>2.3</b>
Manufacture of food products	C10	-1.0	2.2	-7.1	4.7	0.5	0.3
Manufacture of beverages	C11	-7.0	9.1	-9.3	4.4	-0.8	-0.9
Manufacture of tobacco products	C12	19.6	0.2	-10.9	-15.0	16.2	16.1
Manufacture of textiles	C13	-6.8	0.5	2.9	3.4	-5.4	-8.6
Manufacture of wearing apparel	C14	-3.6	-1.0	1.3	3.0	-1.5	-2.0
Manufacture of leather and related products	C15	-9.1	6.0	-2.0	-5.2	-1.2	2.3
Manufacture of wood and of products of wood and cork, except furniture; manufacture of articles of straw and plaiting materials	C16	-5.9	-5.6	-2.7	0.1	-1.3	-1.9
Manufacture of paper and paper products	C17	-3.2	7.2	-2.4	0.9	6.0	-9.0
Printing and reproduction of recorded media	C18	-0.2	1.1	-2.4	5.4	-7.3	-4.5
Manufacture of coke and refined petroleum products	C19	..	..	..	..	..	..
Manufacture of chemicals and chemical products	C20	-1.1	8.6	0.8	7.9	-13.9	15.8
Manufacture of basic pharmaceutical products and pharmaceutical preparations	C21	0.7	-8.1	1.4	-2.1	-0.8	12.2
Manufacture of rubber and plastic products	C22	2.6	4.0	-3.2	2.3	-0.3	-0.6
Manufacture of other non-metallic mineral products	C23	-7.4	3.5	-11.8	4.6	5.0	-9.4
Manufacture of basic metals	C24	-0.3	3.6	-0.6	3.4	-17.8	-6.1
Manufacture of fabricated metal products, except machinery and equipment	C25	-2.7	6.9	-5.1	-0.4	13.1	6.5
Manufacture of computer, electronic and optical products	C26	-20.4	-0.5	-4.6	8.0	2.8	-3.3
Manufacture of electrical equipment	C27	-6.1	-9.0	-0.9	6.0	2.0	4.1
Manufacture of machinery and equipment n.e.c.	C28	-2.2	-3.0	-3.0	0.0	-1.7	7.9
Manufacture of motor vehicles, trailers and semi-trailers	C29	-7.1	13.1	-9.5	-7.0	9.5	0.4
Manufacture of other transport equipment	C30	18.0	-1.4	-1.3	-3.9	-7.2	47.0
Manufacture of furniture	C31	3.6	-5.5	0.4	-4.9	-1.1	8.4
Other manufacturing	C32	-2.8	-0.7	-1.8	2.9	-2.9	-5.8
Repair and installation of machinery and equipment	C33	-7.1	21.6	-9.1	-0.9	-2.7	-0.9
<b>Electricity, gas, steam and air conditioning supply</b>	<b>D</b>	<b>-6.4</b>	<b>13.4</b>	<b>6.0</b>	<b>-23.8</b>	<b>24.6</b>	<b>-11.8</b>
Electricity, gas, steam and air conditioning supply	D35	-6.4	13.4	6.0	-23.8	24.6	-11.8

<sup>1</sup> Seasonally adjusted.

\* Preliminary data.

„..“ - Confidential data.

## INDUSTRIAL PRODUCTION INDICES IN AUGUST 2024

**Table 2**

### Changes of Industrial Production Indices compared to the same month of the previous year<sup>2</sup>

(Per cent)

Economic activities	NACE.BG - 2008	2024					
		III	IV	V	VI	VII	VIII*
<b>Industry</b>	<b>B_TO_E36</b>	<b>-7.7</b>	<b>-0.5</b>	<b>-4.9</b>	<b>-4.9</b>	<b>-2.7</b>	<b>-2.6</b>
<b>Mining and quarrying</b>	<b>B</b>	<b>-21.2</b>	<b>-7.7</b>	<b>-15.9</b>	<b>-16.9</b>	<b>-1.6</b>	<b>15.3</b>
Mining of coal and lignite	B05	-49.5	-50.6	-56.2	-24.0	-8.8	-27.1
Extraction of crude petroleum and natural gas	B06	..	..	..	..	..	..
Mining of metal ores	B07	-20.0	5.8	-9.6	-19.7	-5.6	8.3
Other mining and quarrying	B08	2.3	13.4	-9.8	-12.5	-0.1	-0.5
Mining support service activities	B09	..	..	..	..	..	..
<b>Manufacturing</b>	<b>C</b>	<b>-5.7</b>	<b>-1.8</b>	<b>-6.5</b>	<b>-2.0</b>	<b>-3.9</b>	<b>-1.7</b>
Manufacture of food products	C10	2.3	0.6	-6.9	6.0	2.6	2.9
Manufacture of beverages	C11	-12.2	7.0	-6.0	0.6	-1.9	-0.5
Manufacture of tobacco products	C12	-2.9	10.0	-5.1	-27.9	39.5	-19.7
Manufacture of textiles	C13	-22.3	-15.7	-11.5	-4.2	-7.8	-24.6
Manufacture of wearing apparel	C14	-24.5	-18.6	-15.1	-15.3	-10.5	-9.4
Manufacture of leather and related products	C15	-39.8	-23.9	-26.6	-31.5	-22.9	-21.7
Manufacture of wood and of products of wood and cork, except furniture; manufacture of articles of straw and plaiting materials	C16	0.3	1.8	-6.4	-2.0	-0.8	0.0
Manufacture of paper and paper products	C17	-8.9	5.8	1.5	-1.1	15.8	10.7
Printing and reproduction of recorded media	C18	1.6	9.0	3.3	6.5	2.7	-1.5
Manufacture of coke and refined petroleum products	C19	..	..	..	..	..	..
Manufacture of chemicals and chemical products	C20	-2.0	7.5	20.5	34.5	9.4	18.8
Manufacture of basic pharmaceutical products and pharmaceutical preparations	C21	34.1	10.5	12.8	6.7	6.2	20.1
Manufacture of rubber and plastic products	C22	-9.1	-3.0	-9.4	-2.8	-0.5	-0.2
Manufacture of other non-metallic mineral products	C23	-10.9	5.1	-8.4	0.5	3.3	-6.0
Manufacture of basic metals	C24	19.8	34.4	19.3	25.2	-2.9	-18.7
Manufacture of fabricated metal products, except machinery and equipment	C25	-1.7	9.0	2.6	4.3	12.5	15.1
Manufacture of computer, electronic and optical products	C26	-19.6	-20.0	-25.1	-14.0	-5.6	-13.8
Manufacture of electrical equipment	C27	-10.1	-22.1	-22.0	-19.1	-15.0	-8.9
Manufacture of machinery and equipment n.e.c.	C28	-14.3	-13.4	-20.8	-15.9	-17.4	-3.9
Manufacture of motor vehicles, trailers and semi-trailers	C29	-13.3	7.9	-12.7	-16.2	-2.1	-11.0
Manufacture of other transport equipment	C30	-29.1	-23.1	-29.4	-28.1	-41.2	-1.2
Manufacture of furniture	C31	3.3	-13.3	-3.8	-15.2	-8.5	5.3
Other manufacturing	C32	-26.8	-22.2	-24.6	-22.0	-25.8	-32.1
Repair and installation of machinery and equipment	C33	-6.6	2.9	-3.9	-4.9	-0.1	-9.8
<b>Electricity, gas, steam and air conditioning supply</b>	<b>D</b>	<b>-12.5</b>	<b>9.9</b>	<b>18.4</b>	<b>-18.3</b>	<b>12.9</b>	<b>-10.0</b>
Electricity, gas, steam and air conditioning supply	D35	-12.5	9.9	18.4	-18.3	12.9	-10.0

<sup>2</sup> Calendar-adjusted.

\* Preliminary data.

„..“ - Confidential data.

## INDUSTRIAL PRODUCTION INDICES IN AUGUST 2024

**Table 3**

### Industrial Production Indices (Seasonally adjusted, 2021 = 100)

NACE.BG - 2008	2023					2024							
	VIII	IX	X	XI	XII	I	II	III	IV	V	VI	VII	VIII*
<b>B_TO_E36</b>	<b>103.7</b>	<b>101.5</b>	<b>103.4</b>	<b>98.8</b>	<b>102.9</b>	<b>99.1</b>	<b>99.5</b>	<b>98.5</b>	<b>101.6</b>	<b>99.1</b>	<b>99.2</b>	<b>99.8</b>	<b>100.6</b>
<b>B</b>	<b>89.8</b>	<b>87.6</b>	<b>95.0</b>	<b>90.6</b>	<b>100.3</b>	<b>88.7</b>	<b>80.2</b>	<b>81.8</b>	<b>84.8</b>	<b>76.0</b>	<b>77.2</b>	<b>83.8</b>	<b>102.3</b>
<b>B05</b>	64.7	53.6	64.7	58.6	69.1	51.7	34.7	47.1	47.0	38.7	46.7	58.8	48.5
<b>B06</b>	..	..	..	..	..	..	..	..	..	..	..	..	..
<b>B07</b>	108.9	110.7	112.7	112.0	114.8	110.3	104.6	101.9	106.4	101.2	100.0	99.6	107.9
<b>B08</b>	88.1	82.2	100.2	86.8	90.1	88.3	105.9	97.3	99.0	89.5	87.6	88.6	88.0
<b>B09</b>	..	..	..	..	..	..	..	..	..	..	..	..	..
<b>C</b>	<b>110.1</b>	<b>107.6</b>	<b>108.2</b>	<b>104.7</b>	<b>106.6</b>	<b>103.4</b>	<b>106.6</b>	<b>105.2</b>	<b>105.9</b>	<b>103.0</b>	<b>105.6</b>	<b>104.9</b>	<b>107.2</b>
<b>C10</b>	101.0	103.0	105.8	102.6	102.9	106.5	104.6	103.6	105.8	98.3	103.0	103.6	103.9
<b>C11</b>	105.0	105.2	105.6	111.7	106.0	110.8	111.2	103.4	112.8	102.4	106.9	106.0	105.1
<b>C12</b>	101.1	81.3	57.8	63.8	67.4	54.9	66.0	79.0	79.2	70.5	59.9	69.6	80.8
<b>C13</b>	74.1	68.1	65.0	71.2	65.4	62.5	66.4	61.8	62.1	63.9	66.1	62.5	57.1
<b>C14</b>	97.1	105.3	101.2	97.7	99.1	93.7	92.0	88.7	87.8	88.9	91.6	90.2	88.4
<b>C15</b>	81.2	84.2	76.0	85.0	78.4	66.1	70.0	63.7	67.5	66.1	62.7	61.9	63.3
<b>C16</b>	85.6	84.5	90.3	88.2	84.6	96.7	102.6	96.5	91.1	88.7	88.7	87.6	85.9
<b>C17</b>	81.5	92.7	94.6	95.7	90.0	90.2	92.3	89.3	95.7	93.4	94.2	99.9	90.9
<b>C18</b>	87.3	91.2	90.0	91.7	107.3	97.8	95.0	94.8	95.9	93.5	98.6	91.4	87.3
<b>C19</b>	..	..	..	..	..	..	..	..	..	..	..	..	..
<b>C20</b>	98.5	98.7	111.3	91.7	96.5	97.3	100.1	99.1	107.6	108.5	117.1	100.8	116.6
<b>C21</b>	110.3	111.4	115.1	105.4	94.3	113.4	125.5	126.3	116.1	117.7	115.2	114.3	128.2
<b>C22</b>	83.8	86.7	86.1	87.0	86.6	80.8	79.9	81.9	85.2	82.5	84.4	84.1	83.6
<b>C23</b>	90.4	87.8	87.4	84.0	102.8	88.9	101.9	94.3	97.6	86.1	90.0	94.5	85.6
<b>C24</b>	110.1	116.6	108.9	106.6	104.9	105.7	114.9	114.6	118.8	118.1	122.0	100.3	94.1
<b>C25</b>	154.3	128.7	152.1	138.9	133.5	154.4	147.7	143.7	153.6	145.8	145.2	164.3	174.9
<b>C26</b>	117.5	104.5	98.6	96.0	93.7	105.7	125.2	99.7	99.2	94.7	102.2	105.1	101.6
<b>C27</b>	114.7	107.0	101.6	98.7	104.4	97.2	107.9	101.3	92.2	91.3	96.8	98.8	102.8
<b>C28</b>	95.5	100.5	95.1	93.0	98.1	86.0	92.8	90.7	88.0	85.3	85.4	83.9	90.5
<b>C29</b>	132.6	122.8	135.1	119.0	109.5	125.9	120.7	112.1	126.8	114.8	106.7	116.9	117.4
<b>C30</b>	152.6	129.4	106.9	92.5	103.5	77.7	85.4	100.8	99.4	98.2	94.4	87.5	128.7
<b>C31</b>	78.6	76.1	72.8	75.7	87.2	81.9	81.4	84.3	79.7	80.0	76.1	75.3	81.6
<b>C32</b>	160.7	137.2	146.2	126.4	140.4	137.4	123.2	119.8	119.0	116.8	120.2	116.8	109.9
<b>C33</b>	121.0	116.9	125.2	117.0	124.0	117.7	111.7	103.8	126.2	114.8	113.7	110.6	109.6
<b>D</b>	<b>80.0</b>	<b>79.8</b>	<b>78.8</b>	<b>77.9</b>	<b>87.6</b>	<b>83.3</b>	<b>80.6</b>	<b>75.5</b>	<b>85.6</b>	<b>90.7</b>	<b>69.2</b>	<b>86.2</b>	<b>76.0</b>
<b>D35</b>	80.0	79.8	78.8	77.9	87.6	83.3	80.6	75.5	85.6	90.7	69.2	86.2	76.0

\* Preliminary data.

„..” - Confidential data.

# INDUSTRIAL PRODUCTION INDICES IN AUGUST 2024

**Table 4**

## Industrial Production Indices (Calendar-adjusted, 2021 = 100)

NACE.BG - 2008	2023					2024							
	VIII	IX	X	XI	XII	I	II	III	IV	V	VI	VII	VIII*
<b>B_TO_E36</b>	<b>101.6</b>	<b>101.5</b>	<b>107.6</b>	<b>102.4</b>	<b>105.8</b>	<b>93.9</b>	<b>94.0</b>	<b>101.8</b>	<b>98.8</b>	<b>94.8</b>	<b>101.3</b>	<b>103.1</b>	<b>98.9</b>
<b>B</b>	<b>87.8</b>	<b>91.3</b>	<b>106.3</b>	<b>97.3</b>	<b>110.4</b>	<b>86.5</b>	<b>76.4</b>	<b>79.7</b>	<b>78.3</b>	<b>70.8</b>	<b>74.1</b>	<b>80.8</b>	<b>101.2</b>
<b>B05</b>	60.3	59.7	87.9	75.1	88.7	67.8	37.1	40.2	25.9	17.5	24.2	51.3	44.0
<b>B06</b>	..	..	..	..	..	..	..	..	..	..	..	..	..
<b>B07</b>	106.5	111.5	116.4	115.0	129.4	111.0	99.4	97.6	109.8	96.7	97.2	87.6	115.4
<b>B08</b>	91.1	87.8	113.5	96.1	91.1	63.7	85.4	93.8	96.7	92.4	93.7	92.4	90.7
<b>B09</b>	..	..	..	..	..	..	..	..	..	..	..	..	..
<b>C</b>	<b>105.7</b>	<b>108.7</b>	<b>115.4</b>	<b>107.9</b>	<b>103.9</b>	<b>93.7</b>	<b>98.6</b>	<b>108.5</b>	<b>105.7</b>	<b>102.0</b>	<b>111.4</b>	<b>108.7</b>	<b>103.9</b>
<b>C10</b>	102.0	107.0	115.8	106.1	106.7	97.6	92.4	104.5	102.6	97.2	103.9	103.2	105.0
<b>C11</b>	130.6	114.2	99.1	103.4	98.4	80.8	80.9	96.5	109.8	103.9	127.7	131.0	129.9
<b>C12</b>	105.4	87.9	60.9	62.2	62.8	32.8	43.8	80.0	85.4	80.9	72.5	87.8	84.7
<b>C13</b>	62.5	66.8	68.4	76.3	60.3	57.8	67.0	66.0	60.5	67.4	71.4	63.0	47.1
<b>C14</b>	90.9	104.5	103.5	97.5	95.9	98.1	92.2	89.7	79.1	81.9	98.0	102.0	82.4
<b>C15</b>	64.9	84.4	80.9	95.4	72.7	64.7	67.8	68.5	64.4	62.0	66.9	68.0	50.9
<b>C16</b>	83.4	86.7	96.2	93.7	78.9	81.8	91.5	98.0	91.7	92.8	93.3	93.6	83.4
<b>C17</b>	77.4	91.0	100.8	99.7	84.0	88.3	88.1	93.1	93.2	93.4	97.9	103.2	85.6
<b>C18</b>	81.9	87.9	96.4	103.4	113.9	87.9	86.6	96.6	94.2	93.4	101.9	90.8	80.7
<b>C19</b>	..	..	..	..	..	..	..	..	..	..	..	..	..
<b>C20</b>	93.8	97.4	112.4	93.6	95.6	91.7	94.9	108.6	109.4	107.6	120.8	101.5	111.4
<b>C21</b>	97.3	106.8	120.1	110.4	98.1	109.4	116.3	139.0	115.8	115.8	123.5	111.2	116.9
<b>C22</b>	79.2	88.7	95.0	87.7	77.7	74.4	75.6	85.9	84.4	82.7	88.7	87.9	79.0
<b>C23</b>	95.1	94.0	97.3	90.1	92.4	64.3	85.1	93.3	99.9	91.0	95.3	102.8	89.4
<b>C24</b>	103.1	112.3	113.6	108.8	102.1	107.5	112.2	122.7	119.3	119.5	123.3	97.3	83.8
<b>C25</b>	150.6	129.6	158.8	152.6	139.9	120.7	132.3	144.3	156.8	142.0	152.8	176.9	173.4
<b>C26</b>	104.4	104.2	110.4	99.4	88.5	101.4	122.2	102.6	97.8	92.2	107.3	109.0	90.0
<b>C27</b>	104.8	110.1	106.8	103.6	94.6	90.5	108.6	107.4	89.6	85.7	104.9	103.2	95.5
<b>C28</b>	83.0	101.0	101.5	98.3	93.6	77.3	89.6	96.3	90.0	84.2	90.9	87.4	79.7
<b>C29</b>	115.9	125.9	148.8	131.8	99.4	127.3	122.9	119.2	125.0	110.8	108.4	107.9	103.2
<b>C30</b>	131.9	126.1	112.4	93.4	88.3	61.2	80.4	113.2	104.1	99.7	104.3	89.0	130.3
<b>C31</b>	73.9	77.0	77.7	80.5	87.5	72.2	75.1	87.2	78.2	79.0	81.2	77.9	77.8
<b>C32</b>	161.6	144.8	160.3	135.0	127.8	120.0	108.1	121.2	115.3	114.4	137.5	117.7	109.8
<b>C33</b>	118.3	122.6	130.1	128.3	165.1	86.2	95.7	104.3	114.9	108.9	116.9	112.0	106.7
<b>D</b>	<b>85.0</b>	<b>68.2</b>	<b>68.8</b>	<b>77.6</b>	<b>114.9</b>	<b>101.0</b>	<b>81.5</b>	<b>81.5</b>	<b>72.0</b>	<b>70.0</b>	<b>64.1</b>	<b>91.9</b>	<b>76.5</b>
<b>D35</b>	85.0	68.2	68.8	77.6	114.9	101.0	81.5	81.5	72.0	70.0	64.1	91.9	76.5

\* Preliminary data.

„..” - Confidential data.