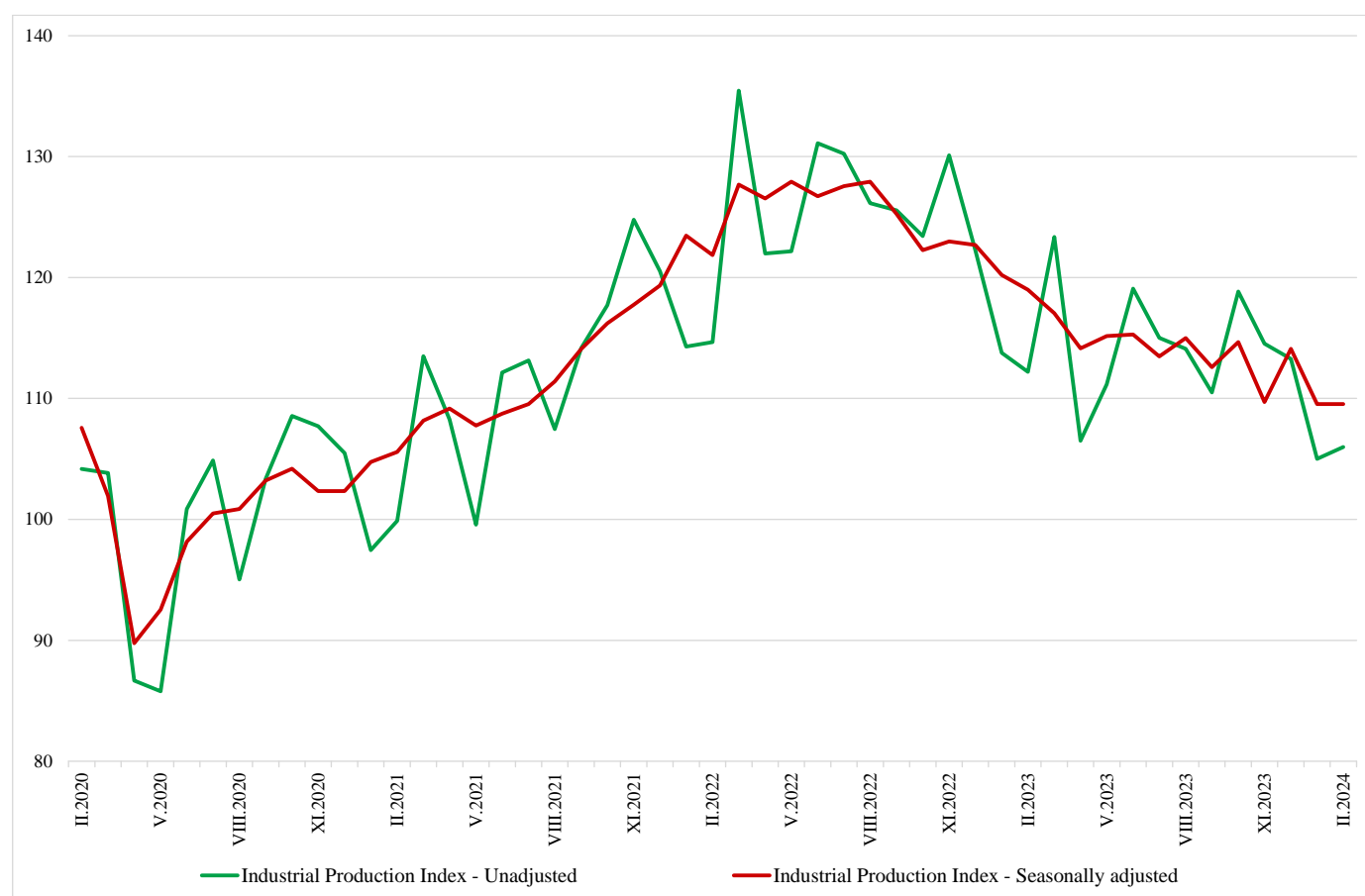


## INDUSTRIAL PRODUCTION INDICES IN FEBRUARY 2024<sup>1</sup>

The Industrial Production Index<sup>2</sup> in February 2024 remains unchanged compared to the previous month. The data are preliminary and seasonally adjusted<sup>3</sup>.

In comparison with February 2023, a decline of 8.3% was registered in the calendar-adjusted<sup>4</sup> Industrial Production Index.

**Figure 1. Industrial Production Indices (2015 = 100)**



<sup>1</sup> February 2024 data is preliminary. The final data on Industrial Production and Turnover Indices for January 2024 can be found on the NSI website: <http://www.nsi.bg/en>.

<sup>2</sup> The Monthly Industrial Production and Industrial Turnover Indices measure changes in production and turnover values of industrial enterprises. This information can be used to assess the current economic development and for short-term forecasts. Indices do not measure the actual production level; they aim to measure the average change in the value of production between two points in time. Indices are compiled based on information collected through a representative sampling survey on industrial enterprises. The sample covers enterprises with an annual turnover of more than 97% of the total turnover in the industry. Industrial Production Indices are calculated at a constant base year that is to say they are weighted with the structure of the value added at factor costs in the base year.

<sup>3</sup> Seasonal adjustment is a statistical method, which eliminates the seasonal component of the time series.

<sup>4</sup> Calendar-adjustment is an adjustment for variations caused by calendar effects, different number of calendar and working days in the months, national holidays and outliers (for example, the presence of more non-working days in May could contribute to the decline in production in some activities).

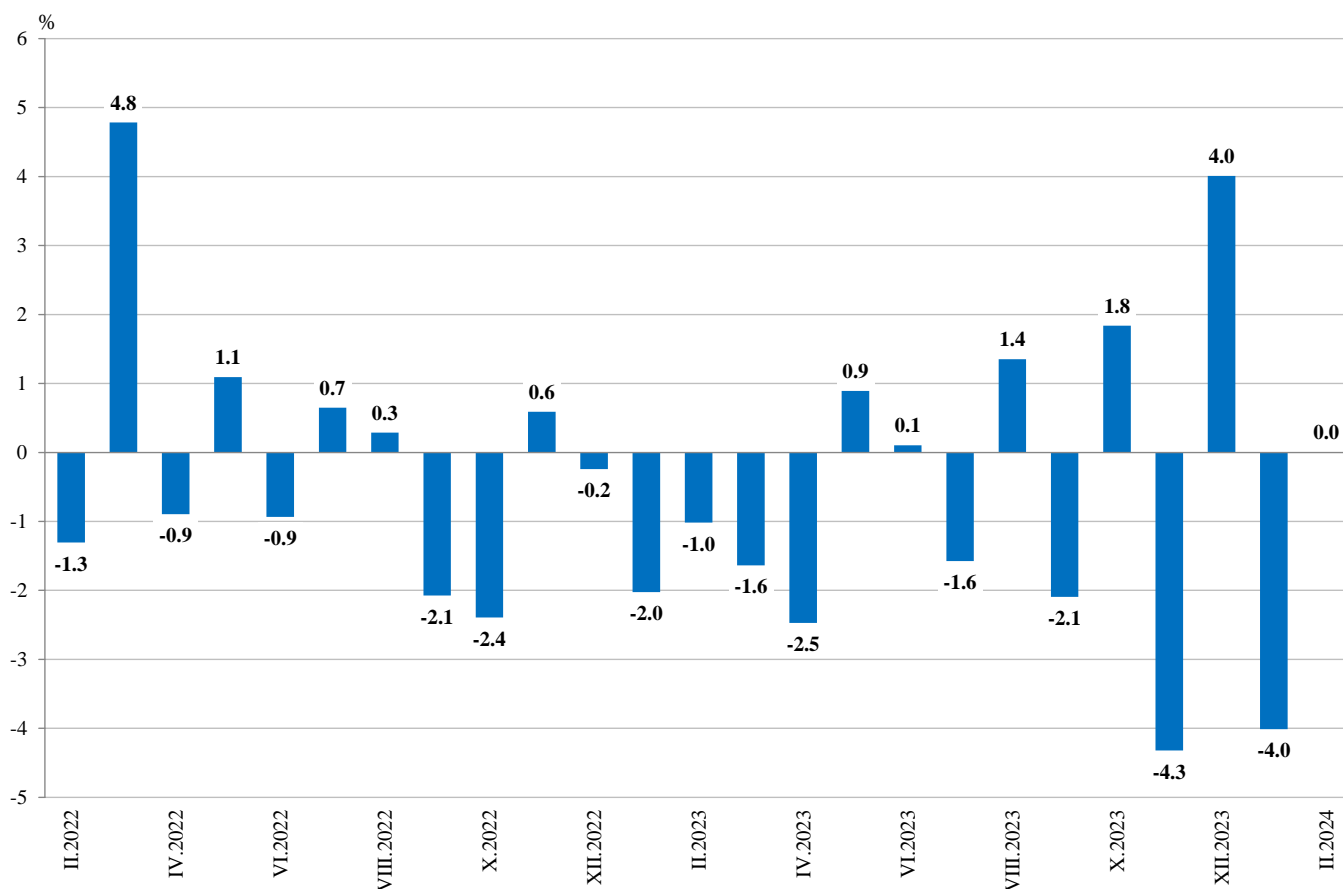
## Monthly changes

In February 2024, compared to the previous month, a decrease was seen in the mining and quarrying industry - by 9.8%, in the electricity, gas, steam and air conditioning supply - by 0.8%, while an increase was registered in the manufacturing - by 2.9%.

A more significant increase in manufacturing was observed in the manufacture of tobacco products - by 29.4%, in the manufacture of computer, electronic and optical products - by 18.6%, and in the manufacture of other non-metallic mineral products - by 15.0%.

A decrease was reported in the other manufacturing - by 10.0%, and in the manufacture of fabricated metal products, except machinery and equipment - by 8.9%.

**Figure 2. Changes of Industrial Production Indices compared to the previous month (Seasonally adjusted)**



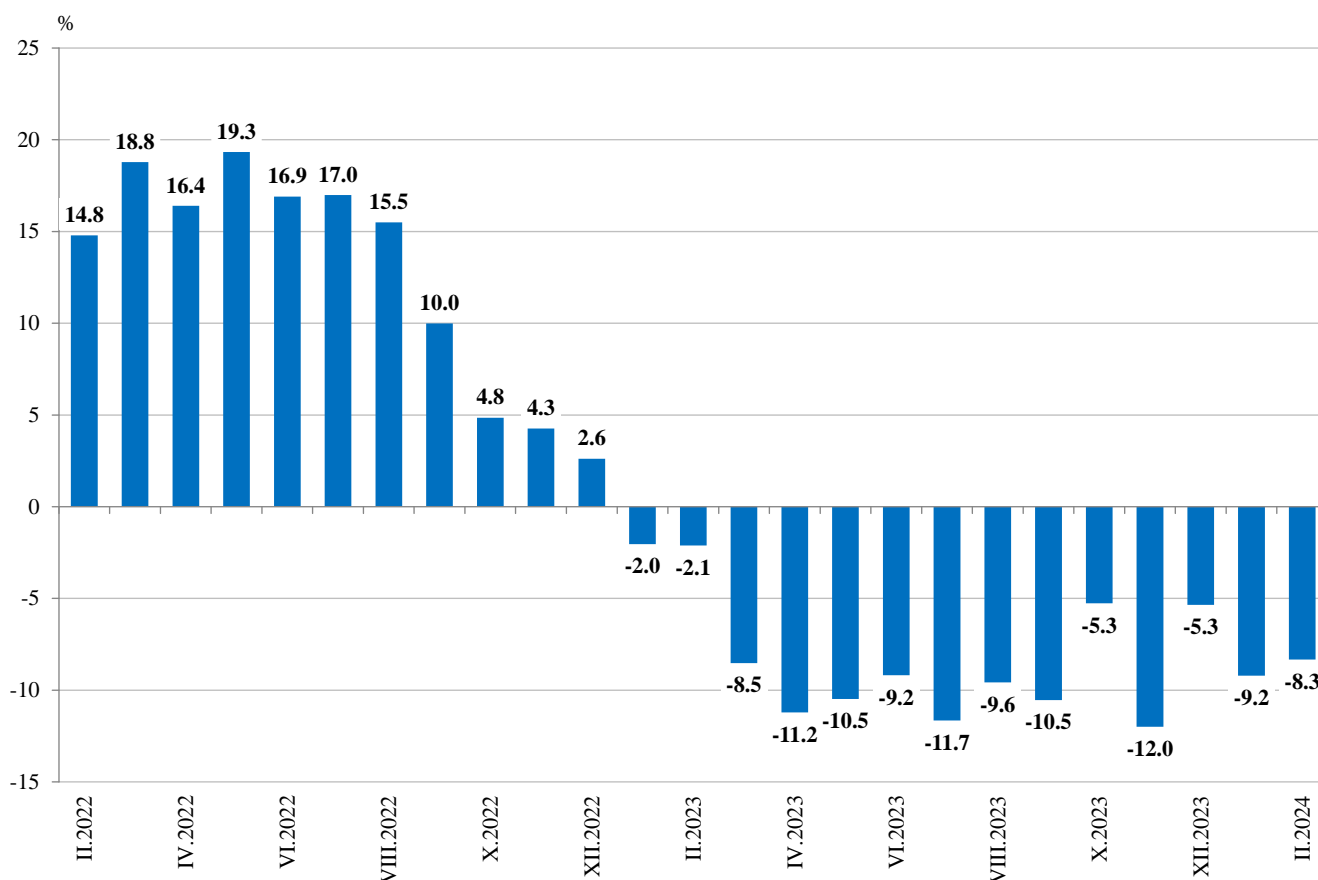
### Annual changes

On an annual basis, a drop of the Industrial Production Index was observed in the mining and quarrying industry - by 20.8%, in the electricity, gas, steam and air conditioning supply - by 20.7%, and in the manufacturing - by 3.3%.

A most significant production decrease in manufacturing, compared to the same month of the previous year, was registered in the manufacture of other transport equipment - by 37.9%, in the manufacture of tobacco products - by 35.3%, in the manufacture of leather and related products - by 19.1%, in the manufacture of wearing apparel - by 18.8%, and in the other manufacturing - by 17.2%.

An increase was seen in the manufacture of basic metals - by 23.2%, in the manufacture of wood and of products of wood and cork, except furniture; manufacture of articles of straw and plaiting materials - by 9.2%, in the manufacture of computer, electronic and optical products - by 7.7%, and in the printing and reproduction of recorded media - by 7.6%.

**Figure 3. Changes of Industrial Production Indices compared to the same month of the previous year (Calendar-adjusted)**





Annex

Table 1

Changes of Industrial Production Indices compared to the previous month<sup>1</sup>

(Per cent)

Economic activities	NACE.BG - 2008	2023				2024	
		IX	X	XI	XII	I	II*
<b>Industry</b>	<b>B_TO_E36</b>	<b>-2.1</b>	<b>1.8</b>	<b>-4.3</b>	<b>4.0</b>	<b>-4.0</b>	<b>0.0</b>
<b>Mining and quarrying</b>	<b>B</b>	<b>-2.4</b>	<b>9.1</b>	<b>-5.5</b>	<b>10.6</b>	<b>-11.1</b>	<b>-9.8</b>
Mining of coal and lignite	B05	-17.1	20.7	-9.4	17.7	-25.5	-33.0
Extraction of crude petroleum and natural gas	B06	..	..	..	..	..	..
Mining of metal ores	B07	2.0	2.3	0.0	3.0	-4.0	-4.3
Other mining and quarrying	B08	-6.8	21.9	-13.4	3.7	-1.0	20.0
Mining support service activities	B09	..	..	..	..	..	..
<b>Manufacturing</b>	<b>C</b>	<b>-2.3</b>	<b>0.6</b>	<b>-3.1</b>	<b>1.6</b>	<b>-2.8</b>	<b>2.9</b>
Manufacture of food products	C10	2.0	2.7	-2.9	0.2	3.5	-1.7
Manufacture of beverages	C11	0.2	0.5	5.8	-5.1	5.0	0.4
Manufacture of tobacco products	C12	-14.7	-22.7	14.4	3.4	-19.9	29.4
Manufacture of textiles	C13	-8.2	-4.7	9.4	-8.3	-3.7	6.6
Manufacture of wearing apparel	C14	8.2	-3.7	-3.2	1.4	-5.7	-1.9
Manufacture of leather and related products	C15	3.6	-9.4	12.1	-7.6	-15.4	4.3
Manufacture of wood and of products of wood and cork, except furniture; manufacture of articles of straw and plaiting materials	C16	-1.1	6.8	-2.1	-4.0	14.8	5.8
Manufacture of paper and paper products	C17	13.5	2.0	0.8	-5.9	-1.1	2.1
Printing and reproduction of recorded media	C18	4.9	-1.6	1.9	17.4	-9.5	-2.4
Manufacture of coke and refined petroleum products	C19	..	..	..	..	..	..
Manufacture of chemicals and chemical products	C20	0.4	12.2	-17.5	5.0	0.3	2.7
Manufacture of basic pharmaceutical products and pharmaceutical preparations	C21	1.1	2.9	-8.4	-10.7	20.3	1.4
Manufacture of rubber and plastic products	C22	3.3	-0.8	1.0	-0.7	-7.2	-1.7
Manufacture of other non-metallic mineral products	C23	-3.2	-0.2	-3.8	21.9	-12.6	15.0
Manufacture of basic metals	C24	6.4	-8.5	-1.3	-1.5	0.7	8.5
Manufacture of fabricated metal products, except machinery and equipment	C25	-16.5	18.1	-8.7	-4.0	15.6	-8.9
Manufacture of computer, electronic and optical products	C26	-11.1	-5.6	-2.6	-2.3	14.2	18.6
Manufacture of electrical equipment	C27	-6.6	-5.0	-2.7	5.8	-5.8	11.2
Manufacture of machinery and equipment n.e.c.	C28	5.4	-5.3	-2.2	5.7	-12.0	7.5
Manufacture of motor vehicles, trailers and semi-trailers	C29	-5.5	9.2	-12.0	-5.8	14.0	-3.8
Manufacture of other transport equipment	C30	-13.1	-15.1	-12.3	9.3	-25.1	10.9
Manufacture of furniture	C31	-3.1	-4.3	4.2	15.4	-6.2	-1.8
Other manufacturing	C32	-14.5	7.0	-13.6	11.2	-2.4	-10.0
Repair and installation of machinery and equipment	C33	-3.5	7.1	-6.6	6.9	-5.6	-4.7
<b>Electricity, gas, steam and air conditioning supply</b>	<b>D</b>	<b>0.3</b>	<b>-3.3</b>	<b>-1.3</b>	<b>13.1</b>	<b>-5.5</b>	<b>-0.8</b>
Electricity, gas, steam and air conditioning supply	D35	0.3	-3.3	-1.3	13.1	-5.5	-0.8

<sup>1</sup> Seasonally adjusted.

\* Preliminary data.

„..“ - Confidential data.



Table 2

Changes of Industrial Production Indices compared to the same month of the previous year<sup>1</sup>

(Per cent)

Economic activities	NACE.BG - 2008	2023				2024	
		IX	X	XI	XII	I	II*
<b>Industry</b>	<b>B_TO_E36</b>	<b>-10.5</b>	<b>-5.3</b>	<b>-12.0</b>	<b>-5.3</b>	<b>-9.2</b>	<b>-8.3</b>
<b>Mining and quarrying</b>	<b>B</b>	<b>-16.5</b>	<b>-1.6</b>	<b>-12.2</b>	<b>-7.6</b>	<b>-8.3</b>	<b>-20.8</b>
Mining of coal and lignite	B05	-53.6	-29.2	-45.6	-32.5	-43.0	-64.9
Extraction of crude petroleum and natural gas	B06	..	..	..	..	..	..
Mining of metal ores	B07	14.1	24.6	18.9	6.9	30.4	-2.3
Other mining and quarrying	B08	-22.1	1.3	-13.7	-4.6	-22.2	16.4
Mining support service activities	B09	..	..	..	..	..	..
<b>Manufacturing</b>	<b>C</b>	<b>-6.3</b>	<b>-5.3</b>	<b>-7.9</b>	<b>-7.0</b>	<b>-11.1</b>	<b>-3.3</b>
Manufacture of food products	C10	-1.6	2.0	3.5	-4.9	-4.3	-1.0
Manufacture of beverages	C11	-5.4	-8.8	-0.2	-8.9	-3.4	4.4
Manufacture of tobacco products	C12	-17.1	-49.6	-7.9	-14.3	-50.8	-35.3
Manufacture of textiles	C13	-28.5	-26.7	-20.6	-27.9	-27.7	-14.4
Manufacture of wearing apparel	C14	-6.4	-12.4	-11.4	-9.8	-12.9	-18.8
Manufacture of leather and related products	C15	-10.1	-19.9	0.0	-13.6	-26.6	-19.1
Manufacture of wood and of products of wood and cork, except furniture; manufacture of articles of straw and plaiting materials	C16	-18.0	-14.2	-19.8	-16.7	1.5	9.2
Manufacture of paper and paper products	C17	-5.5	-11.4	-9.8	-11.1	-14.3	-6.0
Printing and reproduction of recorded media	C18	-2.1	-7.0	1.3	23.8	8.8	7.6
Manufacture of coke and refined petroleum products	C19	..	..	..	..	..	..
Manufacture of chemicals and chemical products	C20	3.4	23.4	-16.2	-17.6	-13.3	0.7
Manufacture of basic pharmaceutical products and pharmaceutical preparations	C21	7.8	8.6	4.6	-28.3	6.7	5.4
Manufacture of rubber and plastic products	C22	-6.9	-7.0	2.8	-4.3	-13.8	-14.2
Manufacture of other non-metallic mineral products	C23	-23.6	-22.5	-22.3	-3.4	-25.9	-4.7
Manufacture of basic metals	C24	9.8	-3.4	8.4	-7.5	2.4	23.2
Manufacture of fabricated metal products, except machinery and equipment	C25	0.1	17.1	-4.6	7.6	-2.7	5.4
Manufacture of computer, electronic and optical products	C26	-32.8	-31.1	-13.4	-18.8	-15.1	7.7
Manufacture of electrical equipment	C27	-5.8	-11.1	-15.9	-12.4	-18.0	-2.8
Manufacture of machinery and equipment n.e.c.	C28	-9.7	-18.0	-14.7	-4.8	-21.0	-12.5
Manufacture of motor vehicles, trailers and semi-trailers	C29	3.4	17.6	-6.5	-22.0	5.4	2.4
Manufacture of other transport equipment	C30	-7.8	-34.8	-42.4	-29.7	-51.4	-37.9
Manufacture of furniture	C31	-25.5	-29.6	-21.4	-4.4	0.3	-5.0
Other manufacturing	C32	-7.6	1.4	-16.4	-13.6	-14.6	-17.2
Repair and installation of machinery and equipment	C33	-3.5	13.5	8.1	15.4	-14.2	-5.5
<b>Electricity, gas, steam and air conditioning supply</b>	<b>D</b>	<b>-32.5</b>	<b>-10.0</b>	<b>-34.6</b>	<b>4.8</b>	<b>-0.2</b>	<b>-20.7</b>
Electricity, gas, steam and air conditioning supply	D35	-32.5	-10.0	-34.6	4.8	-0.2	-20.7

<sup>1</sup> Calendar-adjusted.

\* Preliminary data.

„...“ - Confidential data.



Table 3

**Industrial Production Indices**  
(Seasonally adjusted, 2015 = 100)

NACE.BG - 2008	2023											2024	
	II	III	IV	V	VI	VII	VIII	IX	X	XI	XII	I	II*
<b>B_TO_E36</b>	<b>119.0</b>	<b>117.0</b>	<b>114.1</b>	<b>115.2</b>	<b>115.3</b>	<b>113.5</b>	<b>115.0</b>	<b>112.6</b>	<b>114.7</b>	<b>109.7</b>	<b>114.1</b>	<b>109.5</b>	<b>109.5</b>
<b>B</b>	<b>114.6</b>	<b>117.9</b>	<b>106.1</b>	<b>102.7</b>	<b>105.8</b>	<b>97.6</b>	<b>102.9</b>	<b>100.4</b>	<b>109.5</b>	<b>103.5</b>	<b>114.4</b>	<b>101.7</b>	<b>91.8</b>
<b>B05</b>	91.2	77.0	65.4	53.9	48.4	57.5	57.9	48.0	58.0	52.6	61.9	46.1	30.9
<b>B06</b>	..	..	..	..	..	..	..	..	..	..	..	..	..
<b>B07</b>	131.5	140.4	135.9	136.3	143.3	133.0	139.4	142.2	145.6	145.5	149.9	143.9	137.7
<b>B08</b>	134.2	137.7	126.9	141.4	142.0	126.1	125.7	117.2	142.8	123.7	128.3	127.0	152.5
<b>B09</b>	..	..	..	..	..	..	..	..	..	..	..	..	..
<b>C</b>	<b>129.3</b>	<b>129.3</b>	<b>125.9</b>	<b>126.7</b>	<b>126.1</b>	<b>126.8</b>	<b>128.4</b>	<b>125.5</b>	<b>126.2</b>	<b>122.3</b>	<b>124.3</b>	<b>120.9</b>	<b>124.3</b>
<b>C10</b>	119.3	114.1	119.2	117.6	109.5	114.0	114.1	116.3	119.5	116.0	116.2	120.2	118.2
<b>C11</b>	103.9	111.3	103.9	102.2	101.9	103.6	100.9	101.1	101.6	107.5	102.1	107.2	107.6
<b>C12</b>	41.0	33.1	28.5	28.9	29.5	22.4	35.3	30.1	23.3	26.6	27.5	22.0	28.5
<b>C13</b>	90.5	90.3	83.8	83.0	80.4	78.9	84.9	77.9	74.3	81.2	74.5	71.8	76.5
<b>C14</b>	81.0	83.3	76.3	74.7	78.3	73.0	70.2	76.0	73.1	70.8	71.8	67.7	66.4
<b>C15</b>	59.8	72.7	62.8	64.0	64.1	56.2	57.9	60.0	54.3	60.9	56.3	47.6	49.6
<b>C16</b>	79.2	80.9	74.6	78.8	74.8	73.2	70.7	69.9	74.7	73.1	70.2	80.6	85.3
<b>C17</b>	100.8	100.0	93.9	94.2	97.5	90.1	84.1	95.4	97.3	98.1	92.3	91.3	93.2
<b>C18</b>	103.4	108.9	103.2	105.3	109.4	104.0	102.3	107.3	105.6	107.6	126.3	114.4	111.6
<b>C19</b>	..	..	..	..	..	..	..	..	..	..	..	..	..
<b>C20</b>	119.2	122.7	122.5	109.8	106.6	111.4	119.7	120.2	134.9	111.2	116.8	117.1	120.3
<b>C21</b>	131.1	117.3	125.9	125.1	127.8	125.6	130.3	131.7	135.5	124.1	110.7	133.3	135.1
<b>C22</b>	131.5	129.8	128.9	131.9	127.0	123.3	122.0	126.0	125.0	126.2	125.4	116.4	114.4
<b>C23</b>	128.8	125.8	109.9	109.8	105.3	108.6	107.0	103.5	103.3	99.3	121.1	105.8	121.6
<b>C24</b>	100.3	103.3	96.1	107.6	107.3	107.1	117.0	124.4	113.8	112.4	110.7	111.6	121.0
<b>C25</b>	163.1	178.7	173.9	173.7	169.8	180.5	189.4	158.2	186.9	170.7	163.9	189.4	172.5
<b>C26</b>	269.7	271.0	270.2	272.4	261.2	246.0	258.3	229.5	216.7	211.1	206.2	235.5	279.2
<b>C27</b>	171.4	169.3	171.3	168.7	177.5	172.3	170.3	159.0	151.1	147.0	155.6	146.6	163.1
<b>C28</b>	123.0	123.1	117.3	123.5	116.7	115.7	109.9	115.9	109.8	107.4	113.5	99.8	107.3
<b>C29</b>	156.1	168.1	163.5	171.0	164.0	161.1	172.4	162.8	177.9	156.6	147.5	168.2	161.7
<b>C30</b>	289.0	327.1	292.1	313.2	291.4	307.3	329.8	286.5	243.4	213.4	233.2	174.7	193.7
<b>C31</b>	89.6	87.8	97.7	88.5	94.4	85.8	82.9	80.4	76.9	80.1	92.5	86.7	85.2
<b>C32</b>	208.2	228.3	213.6	216.6	215.9	220.3	225.9	193.2	206.7	178.5	198.5	193.7	174.3
<b>C33</b>	129.1	119.8	135.0	130.1	130.1	120.1	131.7	127.1	136.2	127.1	136.0	128.4	122.3
<b>D</b>	<b>91.1</b>	<b>69.9</b>	<b>68.7</b>	<b>70.1</b>	<b>75.5</b>	<b>68.7</b>	<b>70.5</b>	<b>70.7</b>	<b>68.4</b>	<b>67.5</b>	<b>76.3</b>	<b>72.2</b>	<b>71.6</b>
<b>35</b>	91.1	69.9	68.7	70.1	75.5	68.7	70.5	70.7	68.4	67.5	76.3	72.2	71.6

\* Preliminary data.

„..“ - Confidential data.



Table 4

**Industrial Production Indices**  
**(Calendar-adjusted, 2015 = 100)**

NACE.BG - 2008	2021	2022	2023										2024		
	II	II	II	III	IV	V	VI	VII	VIII	IX	X	XI	XII	I	II*
<b>B_TO_E36</b>	<b>100.5</b>	<b>115.4</b>	<b>112.9</b>	<b>122.2</b>	<b>109.8</b>	<b>110.5</b>	<b>118.0</b>	<b>117.2</b>	<b>112.5</b>	<b>112.3</b>	<b>119.1</b>	<b>113.5</b>	<b>117.1</b>	<b>104.0</b>	<b>103.5</b>
<b>B</b>	<b>105.5</b>	<b>123.3</b>	<b>110.1</b>	<b>115.6</b>	<b>97.2</b>	<b>96.2</b>	<b>102.0</b>	<b>94.1</b>	<b>100.3</b>	<b>104.5</b>	<b>121.6</b>	<b>111.3</b>	<b>126.5</b>	<b>99.0</b>	<b>87.2</b>
<b>B05</b>	64.7	135.0	94.3	71.1	46.7	35.6	28.4	50.2	53.8	53.3	78.4	67.0	79.1	60.5	33.1
<b>B06</b>	..	..	..	..	..	..	..	..	..	..	..	..	..	..	..
<b>B07</b>	140.2	118.3	128.7	155.1	131.9	135.9	153.7	117.9	135.3	141.5	147.9	146.1	164.4	140.9	125.7
<b>B08</b>	108.6	116.7	105.1	131.2	121.8	146.8	153.5	132.3	130.6	125.6	162.5	137.7	130.1	91.3	122.3
<b>B09</b>	..	..	..	..	..	..	..	..	..	..	..	..	..	..	..
<b>C</b>	<b>105.5</b>	<b>117.3</b>	<b>118.2</b>	<b>134.2</b>	<b>125.5</b>	<b>127.2</b>	<b>132.6</b>	<b>131.9</b>	<b>123.3</b>	<b>126.8</b>	<b>134.6</b>	<b>125.8</b>	<b>121.1</b>	<b>109.3</b>	<b>114.4</b>
<b>C10</b>	97.2	105.3	105.3	115.3	114.9	117.8	110.7	113.5	115.2	120.7	130.7	119.7	120.2	110.2	104.3
<b>C11</b>	68.6	71.6	74.4	105.6	98.6	106.4	122.1	128.1	125.6	109.7	95.2	99.4	94.5	77.7	77.7
<b>C12</b>	22.5	19.7	29.0	32.1	30.2	33.2	39.2	24.5	41.1	34.2	23.7	24.2	24.5	12.8	18.8
<b>C13</b>	116.1	119.6	90.3	97.3	82.4	87.3	85.5	78.3	71.6	76.6	78.4	87.4	69.2	66.2	77.2
<b>C14</b>	72.8	78.2	81.6	85.6	70.0	69.4	83.2	82.1	65.4	75.2	74.5	70.2	69.0	70.6	66.3
<b>C15</b>	66.4	77.2	58.0	80.8	59.9	60.0	69.3	62.5	46.1	59.9	57.4	67.8	51.5	46.0	46.9
<b>C16</b>	64.6	84.9	69.4	81.2	75.0	82.3	79.1	78.5	69.3	72.2	80.0	77.9	65.7	67.9	75.8
<b>C17</b>	95.0	100.7	96.3	104.9	90.8	94.5	101.6	91.7	79.4	93.6	103.6	102.4	86.5	90.6	90.5
<b>C18</b>	103.5	102.5	94.3	111.2	101.5	105.9	111.9	103.7	95.8	103.1	112.9	120.9	133.8	102.8	101.4
<b>C19</b>	..	..	..	..	..	..	..	..	..	..	..	..	..	..	..
<b>C20</b>	112.9	140.9	113.9	134.4	123.7	108.4	108.9	112.7	113.8	118.3	136.4	113.6	116.1	111.3	114.7
<b>C21</b>	98.6	101.5	115.7	123.3	125.1	122.2	137.6	124.9	115.7	127.3	143.0	131.3	117.1	130.2	122.0
<b>C22</b>	145.4	143.4	127.2	137.2	126.1	132.4	132.5	128.1	115.0	128.6	137.8	127.2	112.6	107.9	109.2
<b>C23</b>	91.2	110.3	106.0	124.1	111.9	117.7	112.3	117.4	112.8	110.9	115.1	106.8	108.7	76.2	101.0
<b>C24</b>	108.6	117.4	96.6	109.1	94.6	106.8	105.0	106.8	109.9	119.7	121.1	116.0	108.9	114.6	119.0
<b>C25</b>	111.4	107.1	145.8	180.3	176.7	170.1	180.0	193.1	185.0	159.1	195.0	187.4	171.8	148.2	153.6
<b>C26</b>	178.5	224.0	249.5	280.9	268.8	271.2	275.0	254.3	229.9	229.4	243.0	218.9	194.7	223.3	268.6
<b>C27</b>	140.3	152.6	166.0	176.8	171.9	163.3	192.8	180.4	155.7	163.7	158.8	154.1	140.8	134.6	161.4
<b>C28</b>	102.8	124.2	117.4	129.8	120.1	122.7	124.9	122.2	95.8	116.6	117.2	113.5	108.1	89.3	102.8
<b>C29</b>	150.4	154.8	158.7	178.6	157.7	164.8	169.1	149.2	150.6	167.9	197.3	172.2	134.6	168.3	162.5
<b>C30</b>	208.4	260.5	289.8	355.9	301.9	315.0	323.5	337.7	294.2	281.2	250.8	208.3	197.0	136.5	179.9
<b>C31</b>	99.0	108.3	82.3	89.3	95.5	86.9	101.4	90.1	78.2	81.5	82.3	85.1	92.7	76.4	78.2
<b>C32</b>	104.4	159.5	183.4	232.5	208.1	213.3	247.7	222.7	226.9	203.4	225.1	189.6	179.4	168.5	151.9
<b>C33</b>	92.2	102.6	110.7	121.6	121.5	123.4	133.9	122.1	128.8	133.5	141.7	139.7	179.8	93.8	104.6
<b>D</b>	<b>78.5</b>	<b>106.0</b>	<b>93.6</b>	<b>81.1</b>	<b>57.1</b>	<b>51.5</b>	<b>68.2</b>	<b>70.9</b>	<b>74.0</b>	<b>59.4</b>	<b>59.9</b>	<b>67.6</b>	<b>100.0</b>	<b>87.9</b>	<b>74.2</b>
<b>D35</b>	78.5	106.0	93.6	81.1	57.1	51.5	68.2	70.9	74.0	59.4	59.9	67.6	100.0	87.9	74.2

\* Preliminary data.

„...“ - Confidential data.