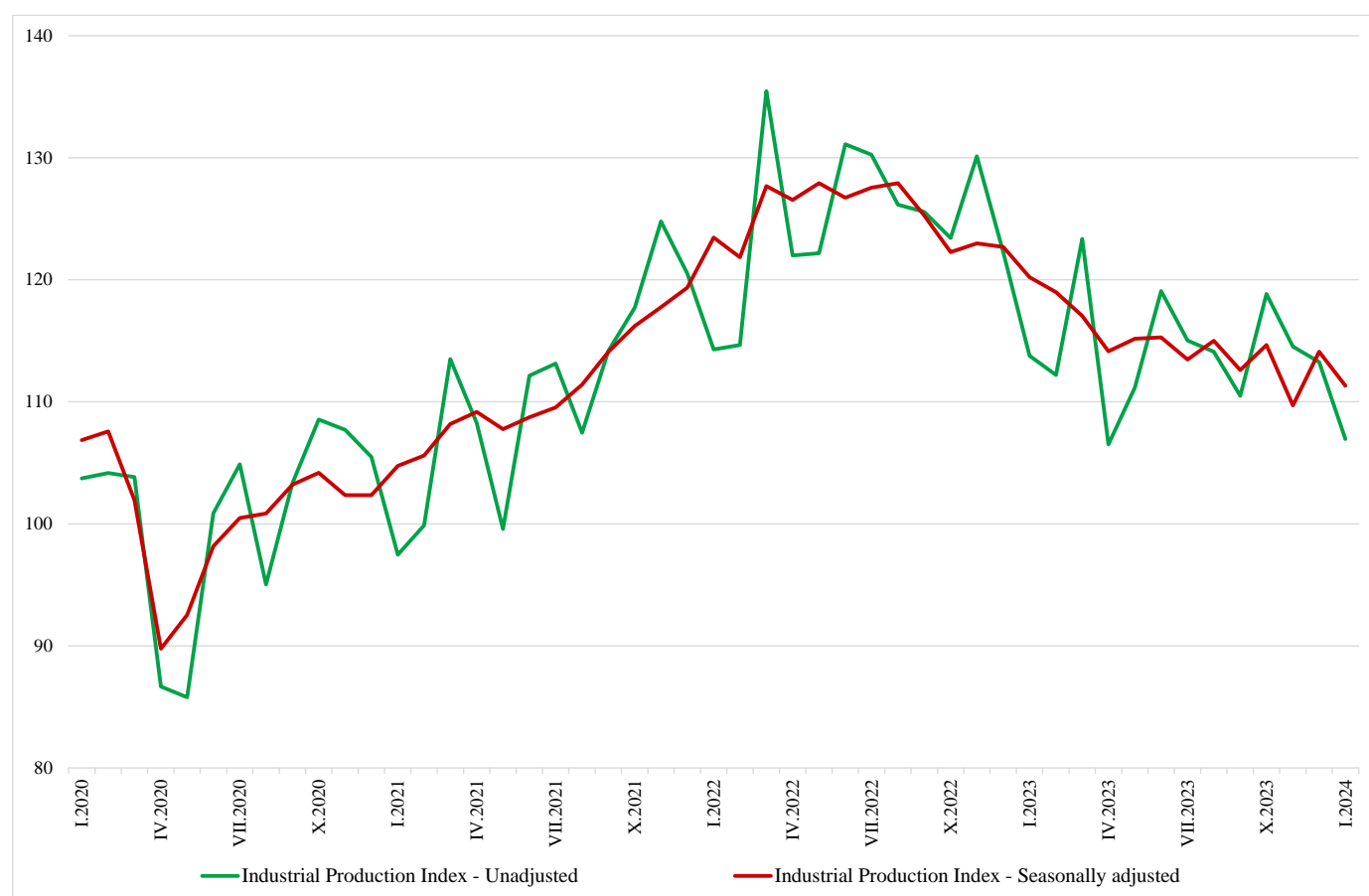


INDUSTRIAL PRODUCTION INDICES IN JANUARY 2024¹

The Industrial Production Index² decreased by 2.5% in January 2024 compared to the previous month. The data are preliminary and seasonally adjusted³.

In comparison with January 2023, a decline of 7.5% was registered in the calendar-adjusted⁴ Industrial Production Index.

Figure 1. Industrial Production Indices (2015 = 100)



¹ January 2024 data are preliminary. The final data on Industrial Production and Turnover Indices for December 2023 can be found on the NSI website: <http://www.nsi.bg/en>.

² The Monthly Industrial Production and Industrial Turnover Indices measure changes in production and turnover values of industrial enterprises. This information can be used to assess the current economic development and for short-term forecasts. Indices do not measure the actual production level; they aim to measure the average change in the value of production between two points in time. Indices are compiled based on information collected through a representative sampling survey on industrial enterprises. The sample covers enterprises with an annual turnover of more than 97% of the total turnover in the industry. Industrial Production Indices are calculated at a constant base year that is to say they are weighted with the structure of the value added at factor costs in the base year.

³ Seasonal adjustment is a statistical method, which eliminates the seasonal component of the time series.

⁴ Calendar-adjustment is an adjustment for variations caused by calendar effects, different number of calendar and working days in the months, national holidays and outliers (for example, the presence of more non-working days in May could contribute to the decline in production in some activities).

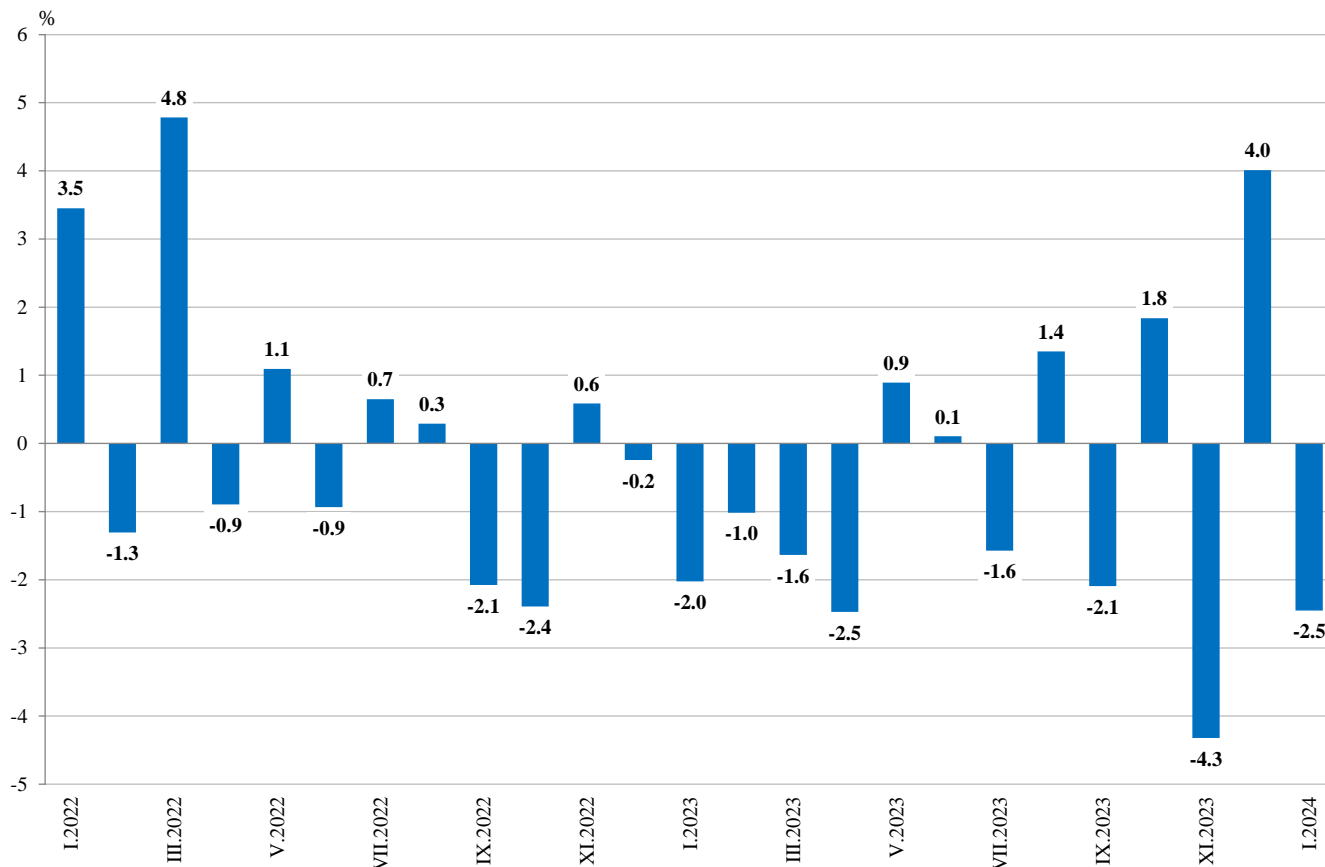
Monthly changes

In January 2024, compared to the previous month, a decrease was seen in the mining and quarrying industry - by 10.7%, in the manufacturing - by 2.5%, and in the electricity, gas, steam and air conditioning supply - by 0.8%.

A more significant decline in manufacturing was observed in the manufacture of tobacco products - by 24.3%, in the manufacture of other transport equipment - by 23.7%, in the manufacture of other non-metallic mineral products - by 15.8%, in the manufacture of leather and related products - by 15.7%, and in manufacture of machinery and equipment n.e.c. - by 12.6%.

An increase was reported in the manufacture of basic pharmaceutical products and pharmaceutical preparations - by 20.9%, in the manufacture of fabricated metal products, except machinery and equipment - by 16.3%, in the manufacture of wood and of products of wood and cork, except furniture; manufacture of articles of straw and plaiting materials - by 13.9%, in the manufacture of chemicals and chemical products - by 13.8%, and in the manufacture of computer, electronic and optical products - by 12.8%.

**Figure 2. Changes of Industrial Production Indices compared to the previous month
(Seasonally adjusted)**



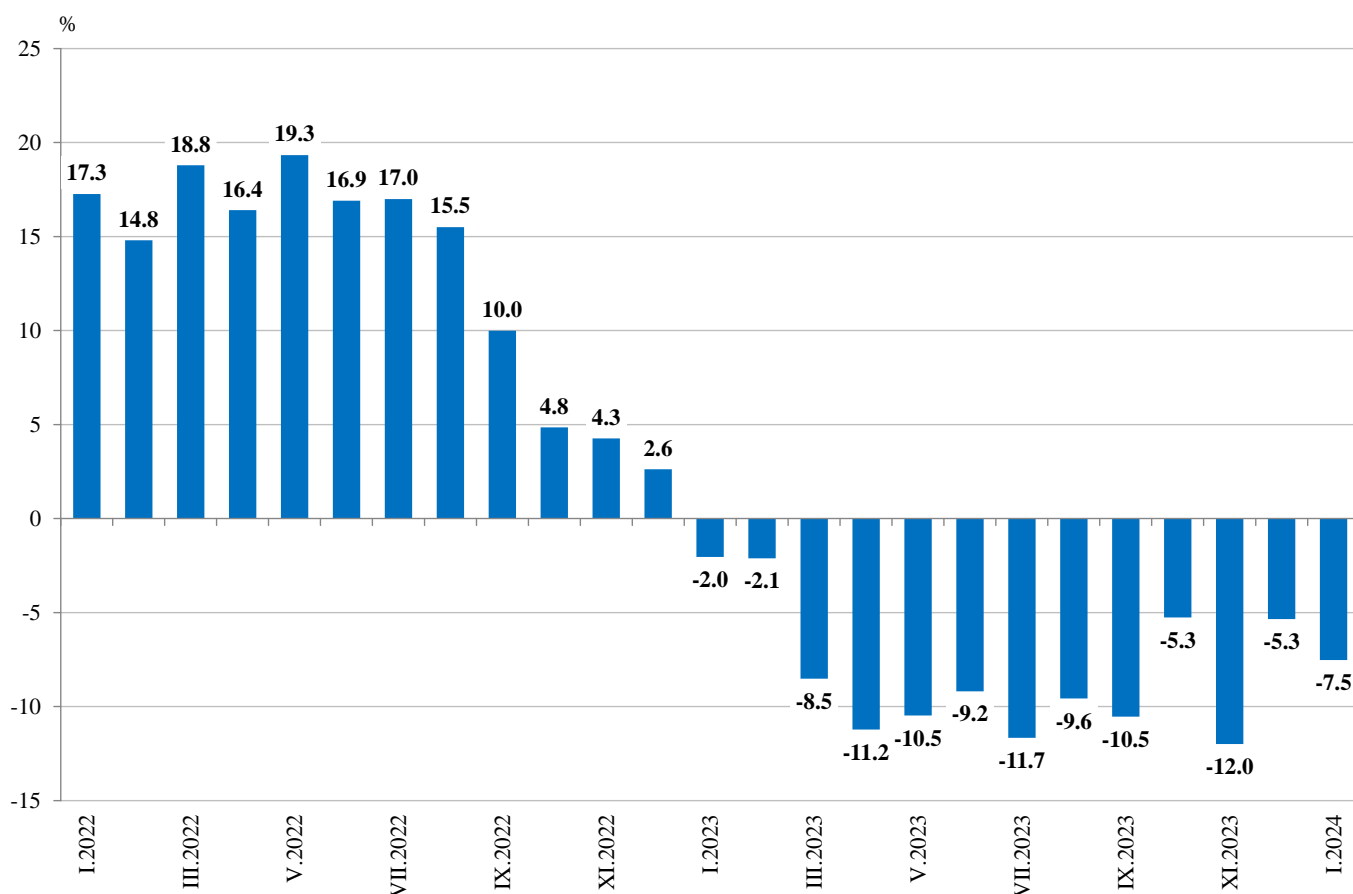
Annual changes

On an annual basis, a drop of the Industrial Production Index was observed in the manufacturing - by 10.4%, in the mining and quarrying industry - by 8.2%, while an increase was registered in the electricity, gas, steam and air conditioning supply - by 7.8%.

A most significant production decrease in manufacturing, compared to the same month of the previous year, was registered in the manufacture of other transport equipment - by 51.3%, in the manufacture of tobacco products - by 50.8%, in the manufacture of textiles - by 30.2%, in the manufacture of other non-metallic mineral products - by 28.2%, and in the manufacture of leather and related products - by 27.5%.

An increase was seen in the printing and reproduction of recorded media - by 12.4%, and in the manufacture of basic pharmaceutical products and pharmaceutical preparations - by 8.2%.

Figure 3. Changes of Industrial Production Indices compared to the same month of the previous year (Calendar-adjusted)





Annex

Table 1

Changes of Industrial Production Indices compared to the previous month¹

(Per cent)

Economic activities	NACE.BG - 2008	2023					2024
		VIII	IX	X	XI	XII	I*
Industry	B_TO_E36	1.4	-2.1	1.8	-4.3	4.0	-2.5
Mining and quarrying	B	5.5	-2.4	9.1	-5.5	10.6	-10.7
Mining of coal and lignite	B05	0.8	-17.1	20.7	-9.4	17.7	-24.9
Extraction of crude petroleum and natural gas	B06
Mining of metal ores	B07	4.8	2.0	2.3	0.0	3.0	-2.7
Other mining and quarrying	B08	-0.3	-6.8	21.9	-13.4	3.7	-0.9
Mining support service activities	B09
Manufacturing	C	1.3	-2.3	0.6	-3.1	1.6	-2.5
Manufacture of food products	C10	0.1	2.0	2.7	-2.9	0.2	3.7
Manufacture of beverages	C11	-2.6	0.2	0.5	5.8	-5.1	4.9
Manufacture of tobacco products	C12	57.7	-14.7	-22.7	14.4	3.4	-24.3
Manufacture of textiles	C13	7.6	-8.2	-4.7	9.4	-8.3	-7.1
Manufacture of wearing apparel	C14	-3.8	8.2	-3.7	-3.2	1.4	-5.0
Manufacture of leather and related products	C15	2.9	3.6	-9.4	12.1	-7.6	-15.7
Manufacture of wood and of products of wood and cork, except furniture; manufacture of articles of straw and plaiting materials	C16	-3.4	-1.1	6.8	-2.1	-4.0	13.9
Manufacture of paper and paper products	C17	-6.7	13.5	2.0	0.8	-5.9	-0.1
Printing and reproduction of recorded media	C18	-1.6	4.9	-1.6	1.9	17.4	-6.9
Manufacture of coke and refined petroleum products	C19
Manufacture of chemicals and chemical products	C20	7.5	0.4	12.2	-17.5	5.0	13.8
Manufacture of basic pharmaceutical products and pharmaceutical preparations	C21	3.8	1.1	2.9	-8.4	-10.7	20.9
Manufacture of rubber and plastic products	C22	-1.1	3.3	-0.8	1.0	-0.7	-6.6
Manufacture of other non-metallic mineral products	C23	-1.5	-3.2	-0.2	-3.8	21.9	-15.8
Manufacture of basic metals	C24	9.2	6.4	-8.5	-1.3	-1.5	-0.1
Manufacture of fabricated metal products, except machinery and equipment	C25	4.9	-16.5	18.1	-8.7	-4.0	16.3
Manufacture of computer, electronic and optical products	C26	5.0	-11.1	-5.6	-2.6	-2.3	12.8
Manufacture of electrical equipment	C27	-1.2	-6.6	-5.0	-2.7	5.8	-7.6
Manufacture of machinery and equipment n.e.c.	C28	-5.0	5.4	-5.3	-2.2	5.7	-12.6
Manufacture of motor vehicles, trailers and semi-trailers	C29	7.0	-5.5	9.2	-12.0	-5.8	11.4
Manufacture of other transport equipment	C30	7.3	-13.1	-15.1	-12.3	9.3	-23.7
Manufacture of furniture	C31	-3.4	-3.1	-4.3	4.2	15.4	-5.2
Other manufacturing	C32	2.5	-14.5	7.0	-13.6	11.2	-2.5
Repair and installation of machinery and equipment	C33	9.6	-3.5	7.1	-6.6	6.9	-4.6
Electricity, gas, steam and air conditioning supply	D	2.7	0.3	-3.3	-1.3	13.1	-0.8
Electricity, gas, steam and air conditioning supply	D35	2.7	0.3	-3.3	-1.3	13.1	-0.8

¹ Seasonally adjusted.

* Preliminary data.

„..“ - Confidential data.



Table 2

Changes of Industrial Production Indices compared to the same month of the previous year¹

(Per cent)

Economic activities	NACE.BG - 2008	2023					2024
		VIII	IX	X	XI	XII	I*
Industry	B_TO_E36	-9.6	-10.5	-5.3	-12.0	-5.3	-7.5
Mining and quarrying	B	-12.2	-16.5	-1.6	-12.2	-7.6	-8.2
Mining of coal and lignite	B05	-45.5	-53.6	-29.2	-45.6	-32.5	-43.0
Extraction of crude petroleum and natural gas	B06
Mining of metal ores	B07	11.8	14.1	24.6	18.9	6.9	30.4
Other mining and quarrying	B08	-12.9	-22.1	1.3	-13.7	-4.6	-21.0
Mining support service activities	B09
Manufacturing	C	-1.7	-6.3	-5.3	-7.9	-7.0	-10.4
Manufacture of food products	C10	-12.2	-1.6	2.0	3.5	-4.9	-4.1
Manufacture of beverages	C11	-6.7	-5.4	-8.8	-0.2	-8.9	-3.2
Manufacture of tobacco products	C12	-5.7	-17.1	-49.6	-7.9	-14.3	-50.8
Manufacture of textiles	C13	-24.7	-28.5	-26.7	-20.6	-27.9	-30.2
Manufacture of wearing apparel	C14	-11.6	-6.4	-12.4	-11.4	-9.8	-12.5
Manufacture of leather and related products	C15	-11.9	-10.1	-19.9	0.0	-13.6	-27.5
Manufacture of wood and of products of wood and cork, except furniture; manufacture of articles of straw and plaiting materials	C16	-18.0	-18.0	-14.2	-19.8	-16.7	0.9
Manufacture of paper and paper products	C17	-24.6	-5.5	-11.4	-9.8	-11.1	-14.2
Printing and reproduction of recorded media	C18	-8.4	-2.1	-7.0	1.3	23.8	12.4
Manufacture of coke and refined petroleum products	C19
Manufacture of chemicals and chemical products	C20	6.2	3.4	23.4	-16.2	-17.6	-1.0
Manufacture of basic pharmaceutical products and pharmaceutical preparations	C21	10.9	7.8	8.6	4.6	-28.3	8.2
Manufacture of rubber and plastic products	C22	-10.4	-6.9	-7.0	2.8	-4.3	-13.7
Manufacture of other non-metallic mineral products	C23	-19.9	-23.6	-22.5	-22.3	-3.4	-28.2
Manufacture of basic metals	C24	0.5	9.8	-3.4	8.4	-7.5	2.2
Manufacture of fabricated metal products, except machinery and equipment	C25	25.6	0.1	17.1	-4.6	7.6	-2.1
Manufacture of computer, electronic and optical products	C26	-5.3	-32.8	-31.1	-13.4	-18.8	-15.1
Manufacture of electrical equipment	C27	5.8	-5.8	-11.1	-15.9	-12.4	-19.1
Manufacture of machinery and equipment n.e.c.	C28	-19.2	-9.7	-18.0	-14.7	-4.8	-21.4
Manufacture of motor vehicles, trailers and semi-trailers	C29	8.4	3.4	17.6	-6.5	-22.0	4.0
Manufacture of other transport equipment	C30	22.0	-7.8	-34.8	-42.4	-29.7	-51.3
Manufacture of furniture	C31	-16.7	-25.5	-29.6	-21.4	-4.4	1.5
Other manufacturing	C32	13.9	-7.6	1.4	-16.4	-13.6	-15.0
Repair and installation of machinery and equipment	C33	-3.7	-3.5	13.5	8.1	15.4	-13.8
Electricity, gas, steam and air conditioning supply	D	-40.5	-32.5	-10.0	-34.6	4.8	7.8
Electricity, gas, steam and air conditioning supply	D35	-40.5	-32.5	-10.0	-34.6	4.8	7.8

¹ Calendar-adjusted.

* Preliminary data.

„..“ - Confidential data.



Table 3

Industrial Production Indices
(Seasonally adjusted, 2015 = 100)

NACE.BG - 2008	2023												2024
	I	II	III	IV	V	VI	VII	VIII	IX	X	XI	XII	I*
B_TO_E36	120.2	119.0	117.0	114.1	115.2	115.3	113.5	115.0	112.6	114.7	109.7	114.1	111.3
B	111.3	114.6	117.9	106.1	102.7	105.8	97.6	102.9	100.4	109.5	103.5	114.4	102.1
B05	92.0	91.2	77.0	65.4	53.9	48.4	57.5	57.9	48.0	58.0	52.6	61.9	46.5
B06
B07	122.9	131.5	140.4	135.9	136.3	143.3	133.0	139.4	142.2	145.6	145.5	149.9	145.8
B08	161.3	134.2	137.7	126.9	141.4	142.0	126.1	125.7	117.2	142.8	123.7	128.3	127.2
B09
C	134.9	129.3	129.3	125.9	126.7	126.1	126.8	128.4	125.5	126.2	122.3	124.3	121.2
C10	125.8	119.3	114.1	119.2	117.6	109.5	114.0	114.1	116.3	119.5	116.0	116.2	120.5
C11	111.3	103.9	111.3	103.9	102.2	101.9	103.6	100.9	101.1	101.6	107.5	102.1	107.1
C12	42.4	41.0	33.1	28.5	28.9	29.5	22.4	35.3	30.1	23.3	26.6	27.5	20.8
C13	98.8	90.5	90.3	83.8	83.0	80.4	78.9	84.9	77.9	74.3	81.2	74.5	69.2
C14	77.7	81.0	83.3	76.3	74.7	78.3	73.0	70.2	76.0	73.1	70.8	71.8	68.2
C15	64.2	59.8	72.7	62.8	64.0	64.1	56.2	57.9	60.0	54.3	60.9	56.3	47.4
C16	79.3	79.2	80.9	74.6	78.8	74.8	73.2	70.7	69.9	74.7	73.1	70.2	79.9
C17	107.3	100.8	100.0	93.9	94.2	97.5	90.1	84.1	95.4	97.3	98.1	92.3	92.2
C18	104.8	103.4	108.9	103.2	105.3	109.4	104.0	102.3	107.3	105.6	107.6	126.3	117.6
C19
C20	134.2	119.2	122.7	122.5	109.8	106.6	111.4	119.7	120.2	134.9	111.2	116.8	132.9
C21	124.6	131.1	117.3	125.9	125.1	127.8	125.6	130.3	131.7	135.5	124.1	110.7	133.9
C22	135.3	131.5	129.8	128.9	131.9	127.0	123.3	122.0	126.0	125.0	126.2	125.4	117.1
C23	141.8	128.8	125.8	109.9	109.8	105.3	108.6	107.0	103.5	103.3	99.3	121.1	101.9
C24	108.0	100.3	103.3	96.1	107.6	107.3	107.1	117.0	124.4	113.8	112.4	110.7	110.6
C25	195.0	163.1	178.7	173.9	173.7	169.8	180.5	189.4	158.2	186.9	170.7	163.9	190.6
C26	274.4	269.7	271.0	270.2	272.4	261.2	246.0	258.3	229.5	216.7	211.1	206.2	232.6
C27	176.4	171.4	169.3	171.3	168.7	177.5	172.3	170.3	159.0	151.1	147.0	155.6	143.7
C28	125.7	123.0	123.1	117.3	123.5	116.7	115.7	109.9	115.9	109.8	107.4	113.5	99.2
C29	158.2	156.1	168.1	163.5	171.0	164.0	161.1	172.4	162.8	177.9	156.6	147.5	164.3
C30	349.5	289.0	327.1	292.1	313.2	291.4	307.3	329.8	286.5	243.4	213.4	233.2	177.9
C31	86.4	89.6	87.8	97.7	88.5	94.4	85.8	82.9	80.4	76.9	80.1	92.5	87.6
C32	227.6	208.2	228.3	213.6	216.6	215.9	220.3	225.9	193.2	206.7	178.5	198.5	193.5
C33	150.5	129.1	119.8	135.0	130.1	130.1	120.1	131.7	127.1	136.2	127.1	136.0	129.7
D	71.5	91.1	69.9	68.7	70.1	75.5	68.7	70.5	70.7	68.4	67.5	76.3	75.7
35	71.5	91.1	69.9	68.7	70.1	75.5	68.7	70.5	70.7	68.4	67.5	76.3	75.7

* Preliminary data.

„..“ - Confidential data.



Table 4

Industrial Production Indices
(Calendar-adjusted, 2015 = 100)

NACE.BG - 2008	2021	2022	2023												2024
	I	I	I	II	III	IV	V	VI	VII	VIII	IX	X	XI	XII	I*
B_TO_E36	99.7	117.0	114.6	112.9	122.2	109.8	110.5	118.0	117.2	112.5	112.3	119.1	113.5	117.1	106.0
B	86.2	131.4	108.0	110.1	115.6	97.2	96.2	102.0	94.1	100.3	104.5	121.6	111.3	126.5	99.1
B05	63.2	144.1	106.0	94.3	71.1	46.7	35.6	28.4	50.2	53.8	53.3	78.4	67.0	79.1	60.5
B06
B07	95.5	128.1	108.1	128.7	155.1	131.9	135.9	153.7	117.9	135.3	141.5	147.9	146.1	164.4	140.9
B08	100.0	105.5	117.4	105.1	131.2	121.8	146.8	153.5	132.3	130.6	125.6	162.5	137.7	130.1	92.7
B09
C	103.5	115.1	122.9	118.2	134.2	125.5	127.2	132.6	131.9	123.3	126.8	134.6	125.8	121.1	110.1
C10	100.5	109.5	115.1	105.3	115.3	114.9	117.8	110.7	113.5	115.2	120.7	130.7	119.7	120.2	110.4
C11	68.1	72.4	80.5	74.4	105.6	98.6	106.4	122.1	128.1	125.6	109.7	95.2	99.4	94.5	77.9
C12	16.3	20.6	26.0	29.0	32.1	30.2	33.2	39.2	24.5	41.1	34.2	23.7	24.2	24.5	12.8
C13	102.8	114.1	91.6	90.3	97.3	82.4	87.3	85.5	78.3	71.6	76.6	78.4	87.4	69.2	63.9
C14	76.1	86.2	81.1	81.6	85.6	70.0	69.4	83.2	82.1	65.4	75.2	74.5	70.2	69.0	70.9
C15	66.8	83.6	62.7	58.0	80.8	59.9	60.0	69.3	62.5	46.1	59.9	57.4	67.8	51.5	45.4
C16	69.3	82.4	66.9	69.4	81.2	75.0	82.3	79.1	78.5	69.3	72.2	80.0	77.9	65.7	67.6
C17	96.1	102.9	105.7	96.3	104.9	90.8	94.5	101.6	91.7	79.4	93.6	103.6	102.4	86.5	90.6
C18	98.6	107.6	94.4	94.3	111.2	101.5	105.9	111.9	103.7	95.8	103.1	112.9	120.9	133.8	106.2
C19
C20	105.1	145.3	128.3	113.9	134.4	123.7	108.4	108.9	112.7	113.8	118.3	136.4	113.6	116.1	127.1
C21	113.6	120.7	121.9	115.7	123.3	125.1	122.2	137.6	124.9	115.7	127.3	143.0	131.3	117.1	132.0
C22	135.8	142.8	125.3	127.2	137.2	126.1	132.4	132.5	128.1	115.0	128.6	137.8	127.2	112.6	108.1
C23	80.5	92.5	102.7	106.0	124.1	111.9	117.7	112.3	117.4	112.8	110.9	115.1	106.8	108.7	73.8
C24	115.2	120.9	111.9	96.6	109.1	94.6	106.8	105.0	106.8	109.9	119.7	121.1	116.0	108.9	114.4
C25	102.2	95.9	152.3	145.8	180.3	176.7	170.1	180.0	193.1	185.0	159.1	195.0	187.4	171.8	149.1
C26	190.4	244.2	263.0	249.5	280.9	268.8	271.2	275.0	254.3	229.9	229.4	243.0	218.9	194.7	223.3
C27	140.9	146.5	164.2	166.0	176.8	171.9	163.3	192.8	180.4	155.7	163.7	158.8	154.1	140.8	132.8
C28	100.5	119.7	113.0	117.4	129.8	120.1	122.7	124.9	122.2	95.8	116.6	117.2	113.5	108.1	88.8
C29	152.0	138.7	159.6	158.7	178.6	157.7	164.8	169.1	149.2	150.6	167.9	197.3	172.2	134.6	166.0
C30	185.9	186.4	280.7	289.8	355.9	301.9	315.0	323.5	337.7	294.2	281.2	250.8	208.3	197.0	136.5
C31	99.2	107.0	76.1	82.3	89.3	95.5	86.9	101.4	90.1	78.2	81.5	82.3	85.1	92.7	77.3
C32	87.8	153.8	197.4	183.4	232.5	208.1	213.3	247.7	222.7	226.9	203.4	225.1	189.6	179.4	167.8
C33	71.9	82.2	109.4	110.7	121.6	121.5	123.4	133.9	122.1	128.8	133.5	141.7	139.7	179.8	94.3
D	91.0	121.7	88.1	93.6	81.1	57.1	51.5	68.2	70.9	74.0	59.4	59.9	67.6	100.0	94.9
D35	91.0	121.7	88.1	93.6	81.1	57.1	51.5	68.2	70.9	74.0	59.4	59.9	67.6	100.0	94.9

* Preliminary data.

„..“ - Confidential data.