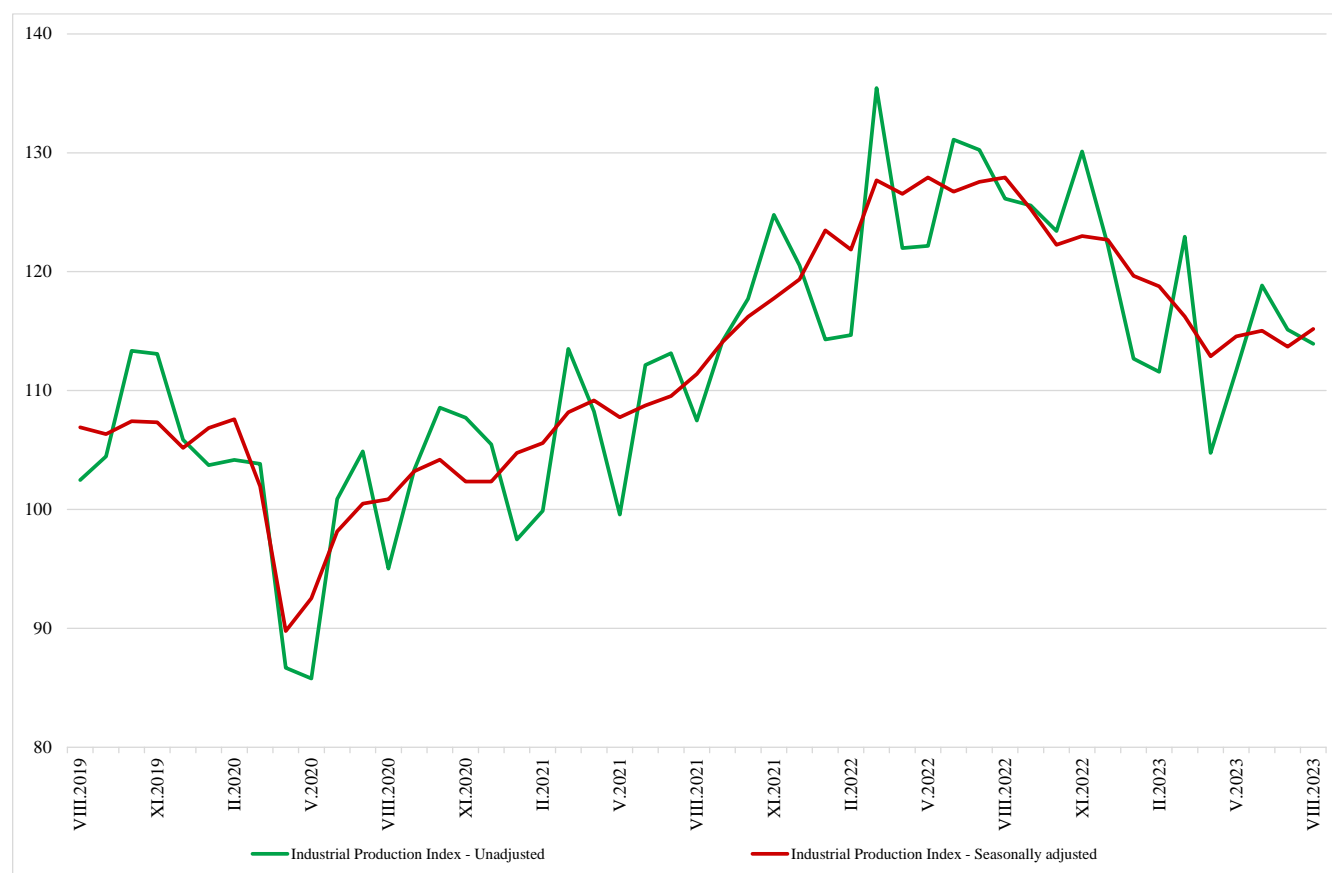


INDUSTRIAL PRODUCTION INDICES IN AUGUST 2023¹

The Industrial Production Index² increased by 1.3% in August 2023 compared to the previous month. The data are preliminary and seasonally adjusted³.

In August 2023, a drop of 9.7% was registered in the calendar-adjusted⁴ Industrial Production Index in comparison with the same month in 2022.

Figure 1. Industrial Production Indices (2015 = 100)



¹ August 2023 data is preliminary. The final data on Industrial Production and Turnover Indices for July 2023 can be found on the NSI website: <http://www.nsi.bg/en>.

² The Monthly Industrial Production and Industrial Turnover Indices measure changes in production and turnover values of industrial enterprises. This information can be used to assess the current economic development and for short-term forecasts. Indices do not measure the actual production level; they aim to measure the average change in the value of production between two points in time. Indices are compiled based on information collected through a representative sampling survey on industrial enterprises. The sample covers enterprises with an annual turnover of more than 97% of the total turnover in the industry. Industrial Production Indices are calculated at a constant base year that is to say they are weighted with the structure of the value added at factor costs in the base year.

³ Seasonal adjustment is a statistical method, which eliminates the seasonal component of the time series.

⁴ Calendar-adjustment is an adjustment for variations caused by calendar effects, different number of calendar and working days in the months, national holidays and outliers (for example, the presence of more non-working days in May could contribute to the decline in production in some activities).

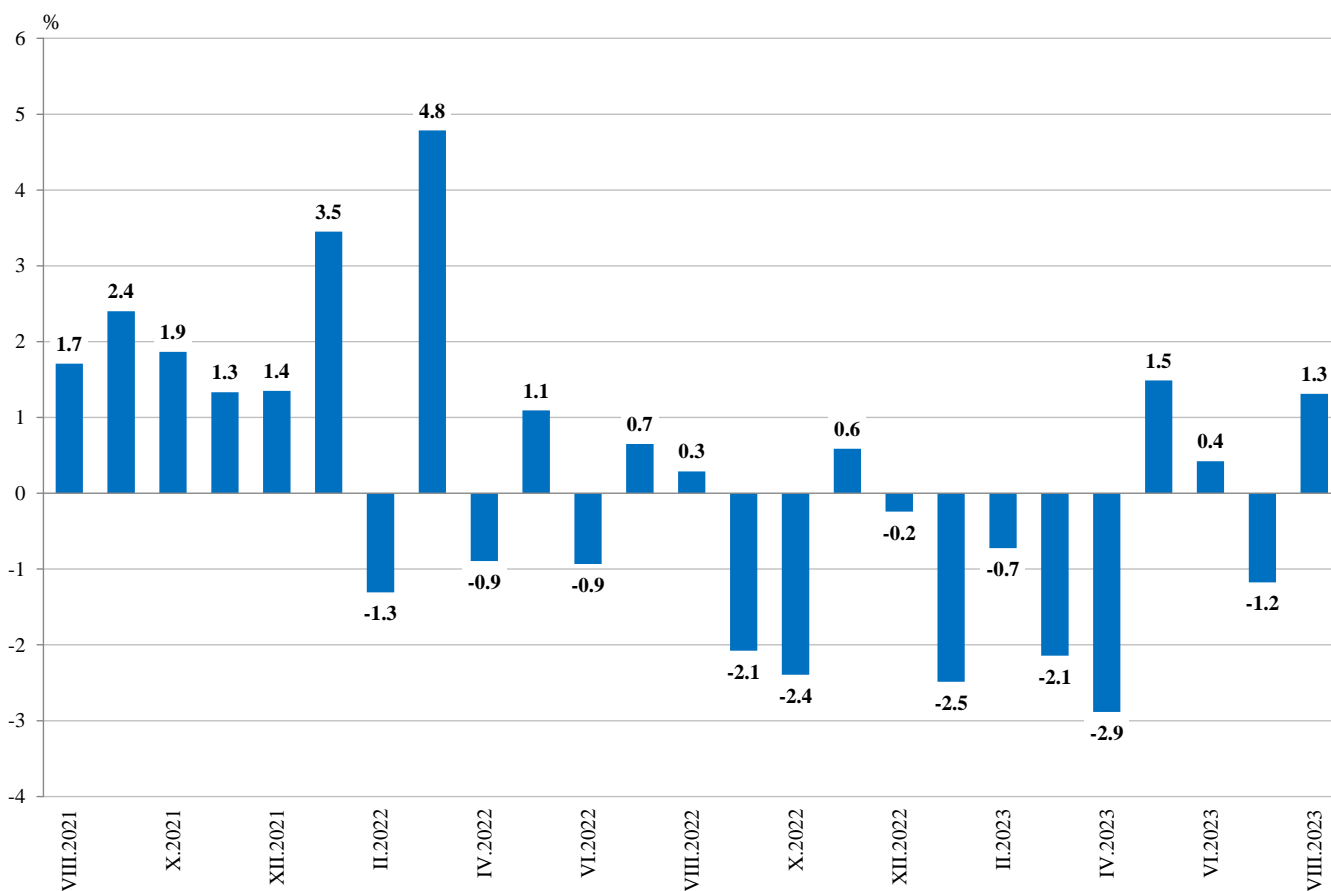
Monthly changes

In August 2023, compared to the previous month, a growth was seen in the mining and quarrying industry - by 5.5%, in the electricity, gas, steam and air conditioning supply - by 1.6%, and in the manufacturing - by 1.5%.

A more significant increase in the manufacturing was observed in the manufacture of tobacco products - by 48.0%, in the manufacture of chemicals and chemical products - by 15.4%, in the manufacture of other transport equipment - by 11.0%, and in the manufacture of motor vehicles, trailers and semi-trailers - by 10.%.

A decline was reported in the manufacture of paper and paper products - by 6.8%, in manufacture of machinery and equipment n.e.c. - by 4.7%, and in the manufacture of furniture - by 4.2%.

Figure 2. Changes of Industrial Production Indices compared to the previous month (Seasonally adjusted)



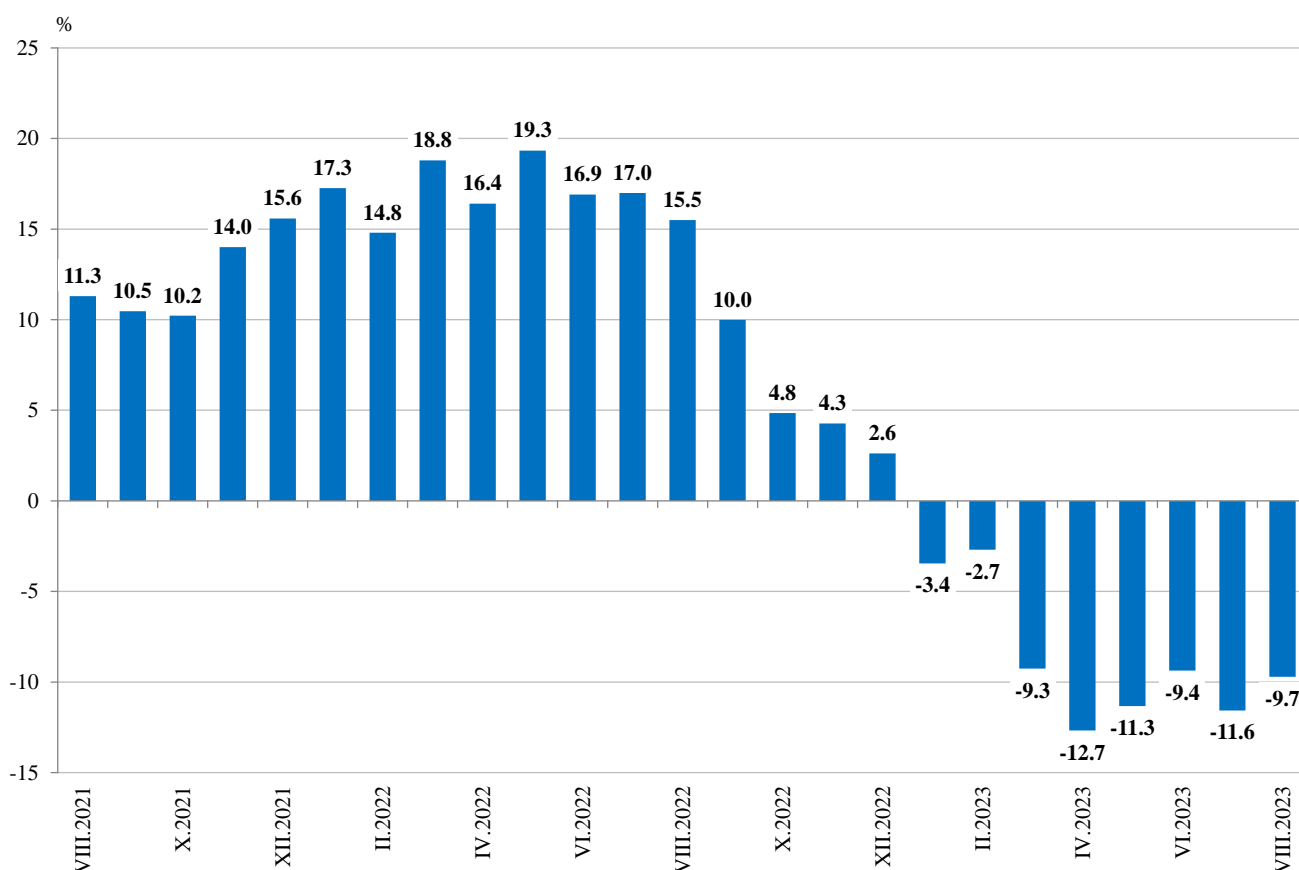
Annual changes

Compared to August 2022, a drop was observed in the electricity, gas, steam and air conditioning supply - by 40.7%, in the mining and quarrying industry - by 12.1%, and in the manufacturing - by 1.9%.

The most significant production decrease in manufacturing compared to the same month of the previous year was registered in the manufacture of textiles - by 29.7%, in the manufacture of paper and paper products - by 24.8%, in the manufacture of other non-metallic mineral products - by 20.5%.

An increase was seen in the manufacture of fabricated metal products, except machinery and equipment - by 24.3%, and in the manufacture of other transport equipment - by 21.2%.

Figure 3. Changes of Industrial Production Indices compared to the same month of the previous year (Calendar-adjusted)





Annex

Table 1

Changes of Industrial Production Indices compared to the previous month¹

(Per cent)

Economic activities	NACE.BG - 2008	2023					
		III	IV	V	VI	VII	VIII*
Industry	B_TO_E36	-2.1	-2.9	1.5	0.4	-1.2	1.3
Mining and quarrying	B	1.5	-8.7	-4.9	4.1	-8.1	5.5
Mining of coal and lignite	B05	-15.7	-15.3	-17.8	-10.2	19.0	0.8
Extraction of crude petroleum and natural gas	B06
Mining of metal ores	B07	20.5	-14.7	2.9	12.9	-23.3	14.7
Other mining and quarrying	B08	1.9	-9.8	16.5	-0.7	-12.2	0.4
Mining support service activities	B09
Manufacturing	C	0.6	-3.4	0.4	0.3	0.9	1.5
Manufacture of food products	C10	-0.2	4.1	-2.1	-5.6	3.0	0.6
Manufacture of beverages	C11	7.5	-6.9	-2.1	0.0	0.2	-2.7
Manufacture of tobacco products	C12	-15.7	-12.9	0.4	-1.2	-16.4	48.0
Manufacture of textiles	C13	-0.9	-6.8	-3.1	-1.1	-1.4	3.2
Manufacture of wearing apparel	C14	0.2	-7.5	1.7	1.4	-7.1	-3.8
Manufacture of leather and related products	C15	18.0	-11.2	2.0	-2.5	-8.7	0.4
Manufacture of wood and of products of wood and cork, except furniture; manufacture of articles of straw and plaiting materials	C16	0.9	-8.3	4.0	-2.0	-2.5	-1.6
Manufacture of paper and paper products	C17	-0.9	-7.2	0.2	4.5	-9.1	-6.8
Printing and reproduction of recorded media	C18	3.8	-5.0	-0.1	6.0	-5.2	-1.2
Manufacture of coke and refined petroleum products	C19
Manufacture of chemicals and chemical products	C20	1.6	-0.2	-11.3	-0.9	6.9	15.4
Manufacture of basic pharmaceutical products and pharmaceutical preparations	C21	-8.8	4.2	-1.3	4.7	-2.6	1.6
Manufacture of rubber and plastic products	C22	-1.3	-0.1	0.5	-2.3	-2.6	-0.3
Manufacture of other non-metallic mineral products	C23	-3.7	-11.5	-2.0	-2.1	3.1	-2.9
Manufacture of basic metals	C24	1.7	-3.4	8.3	0.0	0.5	9.4
Manufacture of fabricated metal products, except machinery and equipment	C25	9.7	-5.8	6.7	-5.5	7.3	3.2
Manufacture of computer, electronic and optical products	C26	0.8	0.4	-0.8	-2.1	-5.7	5.3
Manufacture of electrical equipment	C27	-1.1	1.6	-2.4	7.7	-2.1	-0.6
Manufacture of machinery and equipment n.e.c.	C28	-0.5	-2.6	2.1	-3.4	-0.8	-4.7
Manufacture of motor vehicles, trailers and semi-trailers	C29	7.4	-5.4	8.9	-5.4	-3.6	10.0
Manufacture of other transport equipment	C30	11.8	-8.9	8.1	-6.0	8.1	11.0
Manufacture of furniture	C31	-1.2	11.2	-11.4	9.1	-8.7	-4.2
Other manufacturing	C32	6.0	-5.6	1.8	-1.1	2.2	3.1
Repair and installation of machinery and equipment	C33	-6.7	12.8	-3.3	-0.1	-7.8	8.1
Electricity, gas, steam and air conditioning supply	D	-17.8	-6.3	9.1	6.7	-7.3	1.6
Electricity, gas, steam and air conditioning supply	D35	-17.8	-6.3	9.1	6.7	-7.3	1.6

¹ Seasonally adjusted.

* Preliminary data.

„..“ - Confidential data.



Table 2

Changes of Industrial Production Indices compared to the same month of the previous year¹

(Per cent)

Economic activities	NACE.BG - 2008	2023					
		III	IV	V	VI	VII	VIII*
Industry	B_TO_E36	-9.3	-12.7	-11.3	-9.4	-11.6	-9.7
Mining and quarrying	B	-14.7	-10.4	-24.2	-10.8	-23.5	-12.1
Mining of coal and lignite	B05	-50.8	-53.9	-68.7	-70.1	-56.2	-45.5
Extraction of crude petroleum and natural gas	B06
Mining of metal ores	B07	19.4	28.1	4.0	24.2	-1.2	11.7
Other mining and quarrying	B08	-8.5	-16.3	4.2	2.8	-11.5	-12.2
Mining support service activities	B09
Manufacturing	C	-1.4	-8.4	-8.6	-6.4	-3.4	-1.9
Manufacture of food products	C10	-14.3	-10.3	-12.3	-13.2	-6.7	-14.2
Manufacture of beverages	C11	9.6	-6.2	-5.4	-7.4	-1.4	-8.6
Manufacture of tobacco products	C12	-10.2	-30.6	-34.1	-36.6	-50.7	-5.7
Manufacture of textiles	C13	-25.0	-31.3	-29.2	-29.0	-29.0	-29.7
Manufacture of wearing apparel	C14	-2.6	-14.2	-10.8	-3.7	-10.0	-11.4
Manufacture of leather and related products	C15	7.7	-15.0	-4.3	-6.6	-14.7	-11.2
Manufacture of wood and of products of wood and cork, except furniture; manufacture of articles of straw and plaiting materials	C16	-25.4	-31.0	-28.3	-16.6	-22.1	-16.4
Manufacture of paper and paper products	C17	-7.5	-14.9	-17.5	-9.6	-20.4	-24.8
Printing and reproduction of recorded media	C18	-7.3	-13.9	-15.0	0.1	-8.9	-7.8
Manufacture of coke and refined petroleum products	C19
Manufacture of chemicals and chemical products	C20	-19.4	-12.2	-24.3	-17.5	-10.1	13.0
Manufacture of basic pharmaceutical products and pharmaceutical preparations	C21	-2.9	-4.5	-3.1	-7.0	-1.5	10.3
Manufacture of rubber and plastic products	C22	-12.2	-12.0	-10.9	-10.5	-12.4	-8.3
Manufacture of other non-metallic mineral products	C23	-4.2	-17.1	-20.4	-19.6	-14.7	-20.5
Manufacture of basic metals	C24	-14.3	-21.8	-14.7	-11.8	-8.0	0.9
Manufacture of fabricated metal products, except machinery and equipment	C25	44.6	-6.4	16.0	12.3	30.8	24.3
Manufacture of computer, electronic and optical products	C26	7.0	-5.3	-9.0	-7.7	-21.0	-5.5
Manufacture of electrical equipment	C27	4.7	3.7	-2.3	9.0	6.3	5.7
Manufacture of machinery and equipment n.e.c.	C28	-6.5	-9.4	-9.3	-9.6	-12.6	-17.6
Manufacture of motor vehicles, trailers and semi-trailers	C29	8.1	13.4	22.8	1.3	8.1	9.8
Manufacture of other transport equipment	C30	49.1	18.0	21.0	-0.5	-2.8	21.2
Manufacture of furniture	C31	-25.4	-8.3	-25.5	-12.7	-20.2	-16.9
Other manufacturing	C32	6.9	-1.3	-2.0	-13.5	8.1	13.3
Repair and installation of machinery and equipment	C33	-13.8	14.2	-13.6	8.4	-4.3	-5.1
Electricity, gas, steam and air conditioning supply	D	-39.3	-38.3	-26.7	-26.7	-41.9	-40.7
Electricity, gas, steam and air conditioning supply	D35	-39.3	-38.3	-26.7	-26.7	-41.9	-40.7

¹ Calendar-adjusted.

* Preliminary data.

„...“ - Confidential data.



Table 3

Industrial Production Indices
(Seasonally adjusted, 2015 = 100)

NACE.BG - 2008	2022					2023							
	VIII	IX	X	XI	XII	I	II	III	IV	V	VI	VII	VIII*
B_TO_E36	127.9	125.3	122.3	123.0	122.7	119.6	118.8	116.2	112.9	114.6	115.0	113.7	115.2
B	116.9	119.8	111.9	117.9	124.6	111.3	115.4	117.2	106.9	101.7	106.0	97.4	102.8
B05	102.8	109.2	90.9	109.2	101.3	92.4	91.8	77.4	65.6	53.9	48.4	57.6	58.0
B06
B07	121.0	124.1	118.7	122.9	153.8	108.1	128.7	155.1	132.3	136.2	153.7	117.9	135.2
B08	142.6	147.8	145.3	142.1	136.3	162.8	135.8	138.3	124.7	145.4	144.4	126.7	127.2
B09
C	132.5	134.5	135.0	132.2	135.9	132.9	128.6	129.4	125.0	125.4	125.8	127.0	128.9
C10	129.1	117.7	117.7	111.4	122.3	121.6	111.3	111.0	115.6	113.2	106.8	110.0	110.7
C11	106.5	105.6	110.9	110.6	112.3	112.3	103.4	111.1	103.4	101.3	101.3	101.5	98.7
C12	43.6	38.6	43.1	29.6	34.2	41.6	41.5	35.0	30.5	30.6	30.2	25.3	37.4
C13	116.3	109.8	101.1	106.4	106.3	97.9	89.9	89.1	83.0	80.5	79.6	78.5	81.0
C14	77.5	82.2	83.7	79.3	80.1	77.3	82.2	82.4	76.2	77.5	78.6	73.0	70.2
C15	65.4	67.0	66.7	64.5	64.5	62.3	60.7	71.7	63.6	64.9	63.2	57.7	58.0
C16	85.8	84.7	87.7	91.2	83.9	79.2	79.6	80.4	73.7	76.7	75.2	73.3	72.1
C17	106.9	101.0	112.6	111.6	103.7	107.6	100.7	99.8	92.6	92.8	97.0	88.2	82.2
C18	109.9	109.3	112.3	105.5	106.4	105.3	104.4	108.3	102.8	102.7	108.9	103.2	102.0
C19
C20	112.6	116.0	110.2	132.1	141.9	122.5	115.0	116.8	116.6	103.5	102.6	109.7	126.6
C21	118.8	125.0	129.1	117.8	145.8	126.8	130.6	119.1	124.2	122.6	128.4	125.0	127.0
C22	134.1	136.2	135.2	124.5	133.6	133.4	131.7	130.0	129.9	130.6	127.7	124.3	123.9
C23	133.3	135.0	133.0	127.2	129.1	142.2	130.8	126.0	111.5	109.3	106.9	110.2	107.0
C24	120.3	118.0	118.6	111.3	115.1	109.7	99.7	101.4	97.9	106.1	106.2	106.7	116.7
C25	152.6	155.3	161.3	178.2	150.3	195.9	163.2	179.1	168.7	180.1	170.1	182.5	188.3
C26	277.0	338.9	308.5	237.3	247.4	272.7	269.9	272.0	273.1	270.7	265.0	249.9	263.2
C27	164.5	168.4	166.6	170.5	179.6	172.2	169.8	167.9	170.5	166.5	179.2	175.4	174.3
C28	134.7	129.6	133.6	125.4	121.5	123.4	124.6	123.9	120.8	123.4	119.2	118.2	112.6
C29	159.0	163.4	160.1	167.9	186.0	158.9	155.4	166.9	157.9	172.1	162.7	156.9	172.5
C30	311.4	330.4	363.1	338.5	332.1	318.6	292.6	327.2	298.1	322.4	302.9	327.6	363.6
C31	98.5	105.7	105.9	100.4	99.9	87.1	89.4	88.3	98.3	87.1	95.0	86.8	83.1
C32	201.3	207.8	206.8	210.2	229.1	211.1	214.6	227.4	214.6	218.5	216.2	221.0	227.9
C33	137.2	131.7	121.3	118.2	118.9	149.0	128.3	119.6	135.0	130.6	130.4	120.3	130.0
D	126.0	92.7	67.5	91.9	79.3	77.5	86.1	70.8	66.3	72.3	77.2	71.5	72.7
35	126.0	92.7	67.5	91.9	79.3	77.5	86.1	70.8	66.3	72.3	77.2	71.5	72.7

* Preliminary data.

„...“ - Confidential data.



Table 4

Industrial Production Indices
(Calendar-adjusted, 2015 = 100)

NACE.BG - 2008	2020	2021	2022					2023							
	VIII	VIII	VIII	IX	X	XI	XII	I	II	III	IV	V	VI	VII	VIII*
B_TO_E36	96.8	107.7	124.4	125.6	125.7	128.9	123.7	112.9	112.3	121.2	107.9	109.4	117.7	117.3	112.3
B	107.5	122.3	114.3	125.2	123.5	126.8	137.0	107.5	110.5	115.1	97.6	95.2	102.3	94.2	100.4
B05	67.8	94.0	98.7	114.8	110.8	123.2	117.2	106.0	94.3	71.1	46.7	35.6	28.4	50.2	53.8
B06
B07	133.9	140.2	121.0	124.1	118.7	122.9	153.8	108.1	128.7	155.1	132.3	136.2	153.7	117.9	135.2
B08	117.8	143.2	149.9	161.2	160.5	159.6	136.4	117.7	106.0	132.8	118.3	148.5	155.5	132.4	131.6
B09
C	102.4	112.4	125.4	135.3	142.1	136.6	130.2	120.5	118.3	132.8	124.1	125.3	132.2	131.7	123.1
C10	99.9	112.1	131.1	122.7	128.1	115.7	126.5	109.1	97.2	111.2	110.7	113.1	108.7	110.2	112.5
C11	123.5	121.8	134.5	116.0	104.4	99.6	103.8	79.5	72.5	104.1	97.5	105.1	121.4	125.5	123.0
C12	32.7	32.8	43.5	41.3	47.1	26.3	28.5	26.0	29.0	32.1	31.8	33.2	39.2	24.5	41.1
C13	76.6	100.7	95.1	107.1	107.0	110.1	95.9	90.1	89.7	95.8	82.1	84.3	85.0	77.8	66.9
C14	69.3	72.3	74.0	80.3	85.0	79.2	76.5	81.0	82.9	83.4	69.6	72.2	83.3	82.4	65.6
C15	56.5	56.8	52.4	66.6	71.7	67.7	59.6	64.7	59.4	78.5	59.6	60.3	67.4	63.5	46.5
C16	72.1	90.7	84.5	88.0	93.2	97.1	78.9	65.9	69.4	80.6	73.9	80.3	79.1	78.7	70.6
C17	85.4	107.6	105.3	99.0	116.9	113.4	97.3	104.8	95.8	104.3	89.9	92.8	101.5	90.8	79.2
C18	96.1	120.0	104.5	105.3	121.4	119.4	108.1	93.6	95.5	110.1	101.5	102.9	111.9	103.8	96.4
C19
C20	112.9	116.1	107.2	114.5	110.5	135.5	141.0	115.0	109.2	127.9	117.8	102.3	105.1	111.2	121.1
C21	96.3	121.6	104.3	118.2	131.7	125.6	163.3	120.6	115.7	122.3	123.7	119.1	137.8	124.5	115.1
C22	135.0	147.4	128.3	138.1	148.2	123.8	117.7	124.7	127.3	137.1	127.1	130.1	133.5	129.8	117.6
C23	112.9	130.8	140.9	145.2	148.4	137.4	112.5	102.8	107.4	123.6	112.3	115.9	112.5	118.5	112.1
C24	110.7	86.7	109.3	109.1	125.3	107.0	117.7	114.5	96.5	109.3	94.5	106.8	105.0	106.7	110.3
C25	101.6	105.7	147.3	158.9	166.5	196.4	159.7	151.2	145.9	180.7	169.9	176.9	180.0	194.5	183.0
C26	129.0	197.0	242.8	341.4	352.8	252.8	239.8	258.0	248.9	278.6	268.1	263.6	275.2	253.7	229.4
C27	119.3	134.2	147.2	173.8	178.7	183.2	160.7	162.9	166.4	174.8	171.0	158.2	191.2	180.3	155.6
C28	86.7	103.6	118.6	129.1	142.9	133.0	113.6	112.8	119.7	130.2	123.7	121.4	126.9	124.6	97.7
C29	128.8	125.8	138.9	162.4	167.8	184.3	172.6	159.2	158.7	181.8	153.2	168.1	171.1	145.7	152.4
C30	163.9	145.3	241.2	304.9	384.5	361.3	280.0	279.2	290.6	356.6	301.0	314.0	324.1	338.1	292.2
C31	105.8	99.6	93.8	109.3	116.9	108.4	97.0	76.2	82.4	88.6	95.5	84.4	101.3	91.3	78.0
C32	106.7	149.6	199.3	220.1	222.0	226.9	207.7	183.6	189.9	232.0	208.7	213.6	247.0	221.8	225.9
C33	92.8	104.7	133.7	138.3	124.8	129.2	155.8	109.4	110.7	121.6	121.5	123.9	134.0	122.1	126.9
D	69.0	82.4	124.4	88.0	66.6	103.3	95.5	88.5	93.3	81.2	53.0	52.4	68.3	72.2	73.8
D35	69.0	82.4	124.4	88.0	66.6	103.3	95.5	88.5	93.3	81.2	53.0	52.4	68.3	72.2	73.8

* Preliminary data.

„...“ - Confidential data.