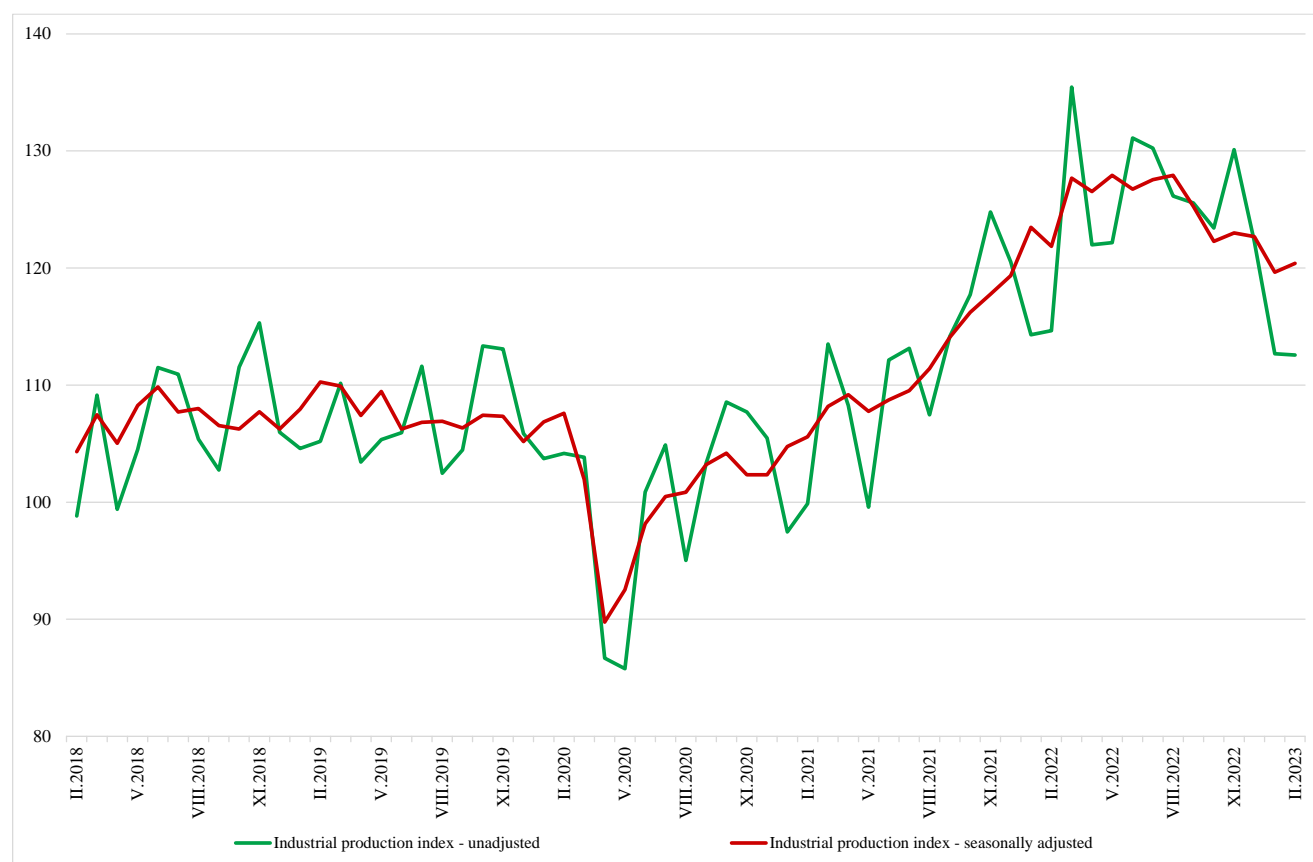


INDUSTRIAL PRODUCTION INDICES IN FEBRUARY 2023¹

The Industrial Production Index² increased by 0.6% in February 2023 compared to January 2023. The data are preliminary and seasonally adjusted³.

In February 2023, a decline of 1.8% was observed in the calendar-adjusted Industrial Production Index in comparison with the same month in 2022.

Figure 1. Industrial Production Indices (2015 = 100)



¹ February 2023 data is preliminary. The final data on Industrial Production and Turnover Indices for January 2023 can be found on the NSI website: <http://www.nsi.bg/en>.

² The Monthly Industrial Production and Industrial Turnover Indices measure changes in production and turnover values of industrial enterprises. This information can be used to assess the current economic development and for short-term forecasts. Indices do not measure the actual production level; they aim to measure the average change in the value of production between two points in time. Indices are compiled based on information collected through a representative sampling survey on industrial enterprises. The sample covers enterprises with an annual turnover of more than 97% of the total turnover in the industry. Industrial production indices are calculated at a constant base year that is to say they are weighted with the structure of the value added at factor costs in the base year.

³ Seasonal adjustment is a statistical method, which eliminates the seasonal component of the time series.

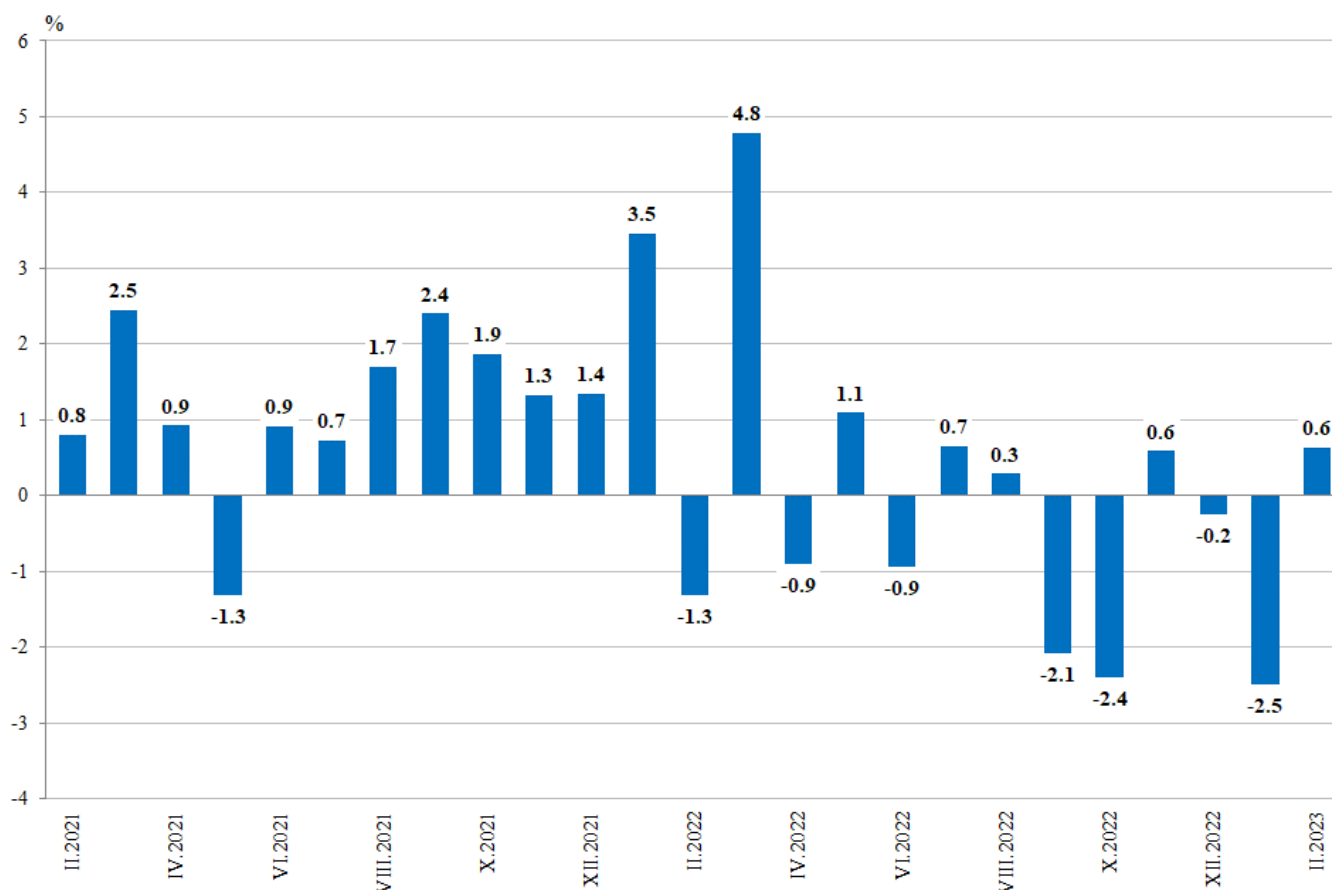
Monthly changes

Compared to the previous month, an increase was reported in the electricity, gas, steam and air conditioning supply - by 18.4%, and in the mining and quarrying industry - by 3.2%, while in manufacturing there was a decrease in the industrial production - by 2.9%.

A major fall was seen in the manufacture of fabricated metal products, except machinery and equipment - by 16.3%, in the repair and installation of machinery and equipment - by 15.0%, and in the manufacture of chemicals and chemical products - by 11.5%.

Improvement was observed in the manufacture of wearing apparel - by 6.9%, in the manufacture of basic pharmaceutical products and pharmaceutical preparations - by 5.4%, in the manufacture of furniture - by 3.6%.

**Figure 2. Changes of Industrial Production Indices compared to the previous month
(Seasonally adjusted)**



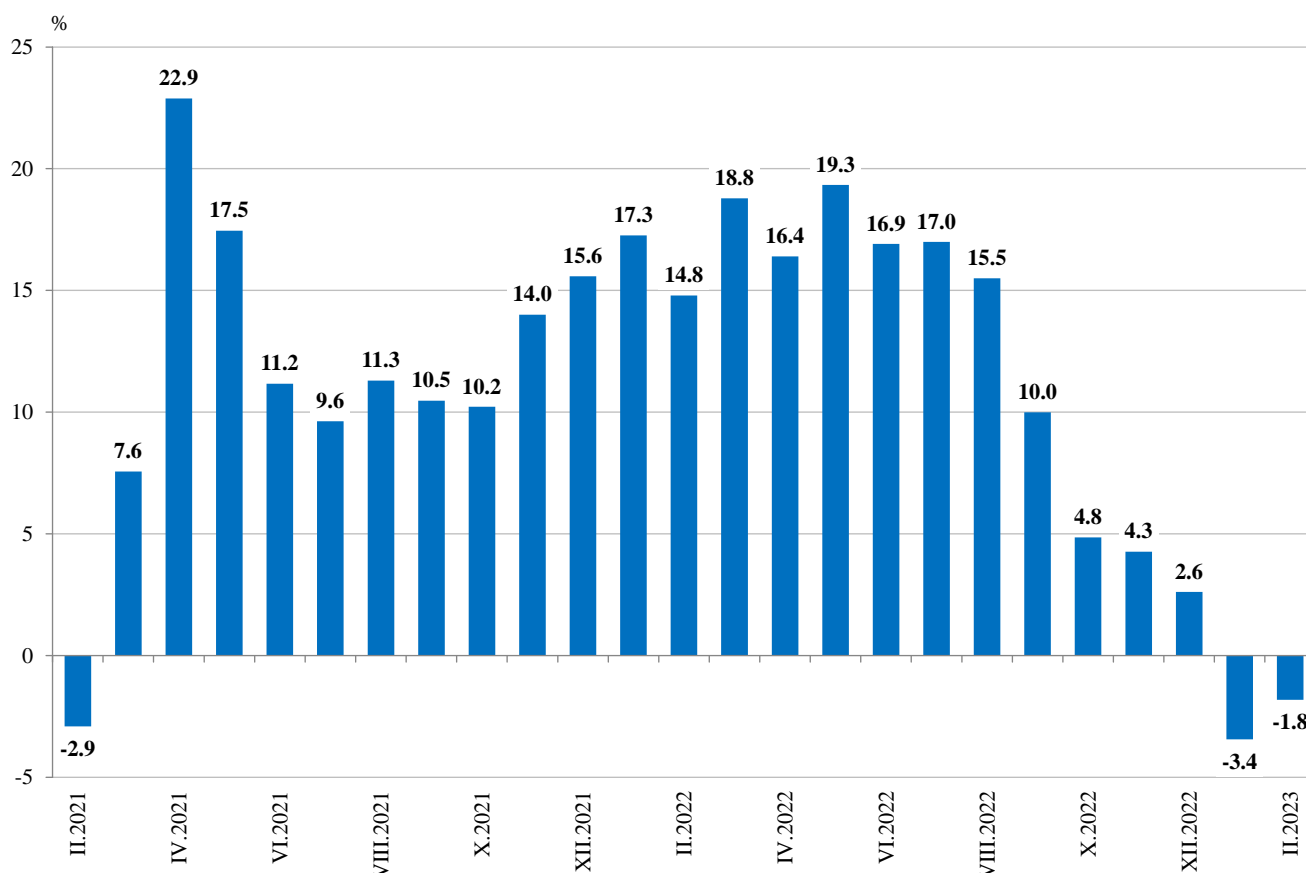
Annual changes

Compared to February 2022, a drop was reported in the mining and quarrying industry - by 10.7%, in the electricity, gas, steam and air conditioning supply - by 5.0%, and in manufacturing - by 0.3%.

A decline was observed in the manufacture of chemicals and chemical products - by 27.5%, in the manufacture of textiles - by 24.4%, in the manufacture of furniture - by 23.7%, in the manufacture of leather and related products - by 23.6%, and in the manufacture of wood and of products of wood and cork, except furniture; manufacture of articles of straw and plaiting materials - by 18.4%.

The most significant growth in manufacturing, compared to the same month of the previous year, was seen in the manufacture of tobacco products - by 47.1%, in the manufacture of fabricated metal products, except machinery and equipment - by 37.1%, and in other manufacturing - by 18.5%.

Figure 3. Changes of Industrial Production Indices compared to the same month of the previous year (Calendar-adjusted)





Annex

Table 1

Changes of Industrial Production Indices compared to the previous month¹

(Per cent)

Economic activities	NACE.BG - 2008	2022				2023	
		IX	X	XI	XII	I	II*
Industry	B_TO_E36	-2.1	-2.4	0.6	-0.2	-2.5	0.6
Mining and quarrying	B	2.5	-6.6	5.4	5.6	-10.6	3.2
Mining of coal and lignite	B05	6.1	-16.8	20.2	-7.3	-8.8	-0.9
Extraction of crude petroleum and natural gas	B06
Mining of metal ores	B07	2.5	-4.3	3.5	25.1	-29.7	18.7
Other mining and quarrying	B08	3.7	-1.7	-2.2	-4.1	19.5	-16.6
Mining support service activities	B09
Manufacturing	C	1.5	0.4	-2.1	2.7	-2.2	-2.9
Manufacture of food products	C10	-8.8	-0.1	-5.3	9.8	-0.6	-8.0
Manufacture of beverages	C11	-0.9	5.1	-0.2	1.5	0.0	-6.3
Manufacture of tobacco products	C12	-11.3	11.5	-31.2	15.3	21.8	-6.2
Manufacture of textiles	C13	-5.6	-7.9	5.2	0.0	-7.9	-6.9
Manufacture of wearing apparel	C14	6.1	1.8	-5.2	1.0	-3.5	6.9
Manufacture of leather and related products	C15	2.4	-0.4	-3.3	-0.1	-3.4	-2.5
Manufacture of wood and of products of wood and cork, except furniture; manufacture of articles of straw and plaiting materials	C16	-1.2	3.4	4.1	-8.0	-5.6	0.8
Manufacture of paper and paper products	C17	-5.6	11.5	-0.9	-7.1	3.8	-6.1
Printing and reproduction of recorded media	C18	-0.5	2.8	-6.1	0.9	-1.1	-0.4
Manufacture of coke and refined petroleum products	C19
Manufacture of chemicals and chemical products	C20	3.1	-5.0	19.9	7.4	-13.7	-11.5
Manufacture of basic pharmaceutical products and pharmaceutical preparations	C21	5.2	3.3	-8.8	23.8	-13.0	5.4
Manufacture of rubber and plastic products	C22	1.6	-0.7	-8.0	7.3	-0.1	-1.3
Manufacture of other non-metallic mineral products	C23	1.3	-1.5	-4.3	1.4	10.2	-8.8
Manufacture of basic metals	C24	-1.9	0.5	-6.2	3.5	-4.7	-8.0
Manufacture of fabricated metal products, except machinery and equipment	C25	1.8	3.9	10.5	-15.6	30.3	-16.3
Manufacture of computer, electronic and optical products	C26	22.3	-9.0	-23.1	4.3	10.2	-0.8
Manufacture of electrical equipment	C27	2.4	-1.1	2.3	5.3	-4.1	-0.6
Manufacture of machinery and equipment n.e.c.	C28	-3.8	3.0	-6.1	-3.1	1.6	0.2
Manufacture of motor vehicles, trailers and semi-trailers	C29	2.7	-2.0	4.8	10.8	-14.6	-2.2
Manufacture of other transport equipment	C30	6.1	9.9	-6.8	-1.9	-4.1	-8.4
Manufacture of furniture	C31	7.3	0.2	-5.1	-0.6	-12.8	3.6
Other manufacturing	C32	3.2	-0.5	1.7	9.0	-7.9	1.2
Repair and installation of machinery and equipment	C33	-4.0	-7.9	-2.5	0.6	25.3	-15.0
Electricity, gas, steam and air conditioning supply	D	-26.4	-27.2	36.1	-13.7	-2.2	18.4
Electricity, gas, steam and air conditioning supply	D35	-26.4	-27.2	36.1	-13.7	-2.2	18.4

¹ Seasonally adjusted.

* Preliminary data.

„..“ - Confidential data.

Table 2

Changes of Industrial Production Indices compared to the same month of the previous year¹

(Per cent)

Economic activities	NACE.BG - 2008	2022				2023	
		IX	X	XI	XII	I	II*
Industry	B_TO_E36	10.0	4.8	4.3	2.6	-3.4	-1.8
Mining and quarrying	B	-3.2	-3.0	-5.5	2.6	-18.2	-10.7
Mining of coal and lignite	B05	-0.1	-18.5	-4.5	-9.2	-26.4	-30.6
Extraction of crude petroleum and natural gas	B06
Mining of metal ores	B07	-6.7	9.0	-8.7	13.6	-15.6	8.5
Other mining and quarrying	B08	1.7	7.0	-0.1	-8.2	11.5	-9.3
Mining support service activities	B09
Manufacturing	C	13.1	13.7	7.9	10.0	4.7	-0.3
Manufacture of food products	C10	4.1	1.7	-5.3	5.4	-0.4	-7.8
Manufacture of beverages	C11	11.7	15.8	9.2	11.1	9.7	4.2
Manufacture of tobacco products	C12	-7.5	33.7	-31.6	5.9	25.9	47.1
Manufacture of textiles	C13	-9.4	-21.3	-7.2	-17.0	-21.1	-24.4
Manufacture of wearing apparel	C14	15.7	14.2	3.5	2.7	-6.0	6.6
Manufacture of leather and related products	C15	-1.3	-5.6	-16.4	-14.8	-22.6	-23.6
Manufacture of wood and of products of wood and cork, except furniture; manufacture of articles of straw and plaiting materials	C16	-6.6	10.0	15.3	-6.3	-20.0	-18.4
Manufacture of paper and paper products	C17	-9.4	6.4	7.4	-7.5	1.8	-4.9
Printing and reproduction of recorded media	C18	-6.6	-7.1	-16.1	-11.6	-13.1	-6.8
Manufacture of coke and refined petroleum products	C19
Manufacture of chemicals and chemical products	C20	-3.5	-16.8	-1.9	0.3	-20.9	-27.5
Manufacture of basic pharmaceutical products and pharmaceutical preparations	C21	5.2	4.6	-8.4	25.5	-0.1	15.0
Manufacture of rubber and plastic products	C22	-4.6	-4.6	-14.4	-8.5	-12.7	-11.1
Manufacture of other non-metallic mineral products	C23	10.6	9.0	-1.0	9.1	11.1	-4.4
Manufacture of basic metals	C24	26.2	15.1	-5.1	9.8	-5.3	-17.4
Manufacture of fabricated metal products, except machinery and equipment	C25	26.4	38.9	54.5	24.8	57.6	37.1
Manufacture of computer, electronic and optical products	C26	50.6	13.4	-16.0	15.4	5.7	10.9
Manufacture of electrical equipment	C27	9.5	13.4	14.9	20.2	11.2	9.1
Manufacture of machinery and equipment n.e.c.	C28	11.1	11.2	2.0	-2.4	-5.8	-5.0
Manufacture of motor vehicles, trailers and semi-trailers	C29	41.3	53.8	37.1	24.6	14.7	2.6
Manufacture of other transport equipment	C30	35.7	70.4	56.6	28.6	49.8	11.3
Manufacture of furniture	C31	-1.9	-2.6	-7.1	-3.5	-28.8	-23.7
Other manufacturing	C32	21.3	55.8	17.7	13.6	19.4	18.5
Repair and installation of machinery and equipment	C33	8.6	3.7	23.2	-0.3	33.1	6.3
Electricity, gas, steam and air conditioning supply	D	1.6	-33.0	-7.2	-23.7	-27.3	-5.0
Electricity, gas, steam and air conditioning supply	D35	1.6	-33.0	-7.2	-23.7	-27.3	-5.0

¹ Calendar-adjusted.

* Preliminary data.

„..“ - Confidential data.



Table 3

Industrial Production Indices
(Seasonally adjusted, 2015 = 100)

NACE.BG 2008	2022											2023	
	II	III	IV	V	VI	VII	VIII	IX	X	XI	XII	I	II*
B_TO_E36	121.9	127.7	126.5	127.9	126.7	127.6	127.9	125.3	122.3	123.0	122.7	119.6	120.4
B	128.6	138.5	118.7	133.3	118.6	126.6	116.9	119.8	111.9	117.9	124.6	111.3	114.9
B05	132.5	150.3	119.4	130.8	113.7	121.7	102.8	109.2	90.9	109.2	101.3	92.4	91.5
B06
B07	118.3	129.8	103.3	130.9	123.8	119.4	121.0	124.1	118.7	122.9	153.8	108.1	128.3
B08	147.2	151.6	144.6	139.9	141.2	141.1	142.6	147.8	145.3	142.1	136.3	162.8	135.8
B09
C	126.8	129.3	133.3	135.4	133.1	131.0	132.5	134.5	135.0	132.2	135.9	132.9	129.0
C10	119.9	128.2	128.7	129.3	121.8	117.6	129.1	117.7	117.7	111.4	122.3	121.6	111.8
C11	98.7	102.7	108.9	105.2	108.0	102.4	106.5	105.6	110.9	110.6	112.3	112.3	105.3
C12	31.9	36.7	40.1	41.7	44.9	38.6	43.6	38.6	43.1	29.6	34.2	41.6	39.0
C13	118.6	117.4	117.8	110.6	110.1	108.1	116.3	109.8	101.1	106.4	106.3	97.9	91.2
C14	78.3	86.1	88.0	86.3	82.4	80.3	77.5	82.2	83.7	79.3	80.1	77.3	82.6
C15	74.7	71.0	72.4	70.5	69.2	66.7	65.4	67.0	66.7	64.5	64.5	62.3	60.7
C16	97.3	108.2	105.4	106.8	89.8	93.7	85.8	84.7	87.7	91.2	83.9	79.2	79.8
C17	105.3	108.2	107.1	111.2	108.2	111.1	106.9	101.0	112.6	111.6	103.7	107.6	101.1
C18	111.8	117.5	118.6	119.6	109.9	112.9	109.9	109.3	112.3	105.5	106.4	105.3	104.9
C19
C20	148.5	144.6	132.4	135.7	123.3	121.4	112.6	116.0	110.2	132.1	141.9	122.5	108.4
C21	117.2	115.4	129.7	125.2	137.9	126.3	118.8	125.0	129.1	117.8	145.8	126.8	133.6
C22	147.9	147.7	147.2	147.3	142.7	140.8	134.1	136.2	135.2	124.5	133.6	133.4	131.7
C23	134.9	131.8	131.6	134.7	129.7	128.1	133.3	135.0	133.0	127.2	129.1	142.2	129.7
C24	117.1	118.5	119.1	122.3	120.7	118.6	120.3	118.0	118.6	111.3	115.1	109.7	100.9
C25	118.7	124.6	178.5	155.9	150.5	139.6	152.6	155.3	161.3	178.2	150.3	195.9	164.0
C26	242.3	253.3	287.8	296.6	286.1	310.8	277.0	338.9	308.5	237.3	247.4	272.7	270.4
C27	155.7	158.6	164.7	167.1	166.2	165.4	164.5	168.4	166.6	170.5	179.6	172.2	171.2
C28	129.8	132.7	132.1	136.4	131.1	135.1	134.7	129.6	133.6	125.4	121.5	123.4	123.7
C29	149.8	154.9	137.8	141.9	160.5	143.0	159.0	163.4	160.1	167.9	186.0	158.9	155.5
C30	248.5	219.6	241.8	266.1	293.8	335.2	311.4	330.4	363.1	338.5	332.1	318.6	291.8
C31	117.3	116.1	109.9	115.5	110.5	108.3	98.5	105.7	105.9	100.4	99.9	87.1	90.3
C32	179.3	213.5	216.3	222.8	248.9	203.7	201.3	207.8	206.8	210.2	229.1	211.1	213.6
C33	118.7	136.9	118.9	151.1	120.8	124.6	137.2	131.7	121.3	118.2	118.9	149.0	126.7
D	103.1	116.0	101.7	97.8	111.2	125.1	126.0	92.7	67.5	91.9	79.3	77.5	91.8
35	103.1	116.0	101.7	97.8	111.2	125.1	126.0	92.7	67.5	91.9	79.3	77.5	91.8

* Preliminary data.

„...“ - Confidential data.



Table 4

Industrial Production Indices
(Calendar-adjusted, 2015 = 100)

NACE.BG - 2008	2020	2021	2022												2023	
	II	II	II	III	IV	V	VI	VII	VIII	IX	X	XI	XII	I	II*	
B_TO_E36	103.5	100.5	115.4	133.6	123.6	123.4	129.9	132.7	124.4	125.6	125.7	128.9	123.7	112.9	113.3	
B	106.3	105.5	123.3	134.9	108.9	125.5	114.6	123.0	114.3	125.2	123.5	126.8	137.0	107.5	110.0	
B05	87.6	64.7	135.0	144.4	101.2	113.5	94.7	114.7	98.7	114.8	110.8	123.2	117.2	106.0	93.7	
B06	
B07	128.6	140.2	118.3	129.8	103.3	130.9	123.8	119.4	121.0	124.1	118.7	122.9	153.8	108.1	128.3	
B08	80.3	108.6	116.7	145.1	141.4	142.5	151.4	149.6	149.9	161.2	160.5	159.6	136.4	117.7	105.8	
B09	
C	109.8	105.5	117.3	134.7	135.5	137.2	141.3	136.4	125.4	135.3	142.1	136.6	130.2	120.5	117.0	
C10	98.4	97.2	105.3	129.7	123.4	129.0	125.2	118.2	131.1	122.7	128.1	115.7	126.5	109.1	97.1	
C11	81.0	68.6	71.6	95.0	104.0	111.2	131.0	127.3	134.5	116.0	104.4	99.6	103.8	79.5	74.6	
C12	24.1	22.5	19.7	35.7	45.7	50.4	61.8	49.8	43.5	41.3	47.1	26.3	28.5	26.0	29.0	
C13	102.2	116.1	119.6	127.7	119.4	119.0	119.7	109.6	95.1	107.1	107.0	110.1	95.9	90.1	90.4	
C14	79.8	72.8	78.2	85.7	81.1	81.0	86.5	91.5	74.0	80.3	85.0	79.2	76.5	81.0	83.4	
C15	89.3	66.4	77.2	72.9	70.0	63.0	72.1	74.5	52.4	66.6	71.7	67.7	59.6	64.7	59.0	
C16	70.6	64.6	84.9	108.0	107.1	112.0	94.9	101.0	84.5	88.0	93.2	97.1	78.9	65.9	69.3	
C17	95.8	95.0	100.7	112.7	105.7	112.5	112.3	114.2	105.3	99.0	116.9	113.4	97.3	104.8	95.8	
C18	105.5	103.5	102.5	118.8	117.9	121.0	111.8	113.9	104.5	105.3	121.4	119.4	108.1	93.6	95.5	
C19	
C20	116.8	112.9	140.9	158.7	134.1	135.2	127.4	123.6	107.2	114.5	110.5	135.5	141.0	115.0	102.1	
C21	98.7	98.6	101.5	125.9	129.6	123.0	148.2	126.3	104.3	118.2	131.7	125.6	163.3	120.6	116.7	
C22	130.7	145.4	143.4	156.3	144.5	146.0	149.2	148.2	128.3	138.1	148.2	123.8	117.7	124.7	127.4	
C23	98.4	91.2	110.3	129.1	135.4	145.6	139.8	138.9	140.9	145.2	148.4	137.4	112.5	102.8	105.4	
C24	112.0	108.6	117.4	127.6	120.8	125.1	119.1	116.0	109.3	109.1	125.3	107.0	117.7	114.5	97.0	
C25	123.2	111.4	107.1	125.0	181.5	152.5	160.3	148.7	147.3	158.9	166.5	196.4	159.7	151.2	146.9	
C26	152.2	178.5	224.0	260.4	283.1	289.7	298.2	321.0	242.8	341.4	352.8	252.8	239.8	258.0	248.5	
C27	130.6	140.3	152.6	167.0	165.0	162.0	175.3	169.5	147.2	173.8	178.7	183.2	160.7	162.9	166.4	
C28	109.6	102.8	124.2	139.2	136.5	133.8	140.5	142.5	118.6	129.1	142.9	133.0	113.6	112.8	117.9	
C29	154.5	150.4	154.8	168.2	135.1	136.9	168.9	134.8	138.9	162.4	167.8	184.3	172.6	159.2	158.8	
C30	204.9	208.4	260.5	239.3	255.1	259.6	325.8	348.0	241.2	304.9	384.5	361.3	280.0	279.2	289.8	
C31	96.1	99.0	108.3	118.7	104.2	113.3	116.1	114.3	93.8	109.3	116.9	108.4	97.0	76.2	82.6	
C32	183.6	104.4	159.5	217.0	211.4	218.1	285.5	205.1	199.3	220.1	222.0	226.9	207.7	183.6	189.0	
C33	109.4	92.2	102.6	141.1	106.5	143.3	123.6	127.5	133.7	138.3	124.8	129.2	155.8	109.4	109.1	
D	83.2	78.5	106.0	133.7	85.8	71.5	93.2	124.4	124.4	88.0	66.6	103.3	95.5	88.5	100.6	
D35	83.2	78.5	106.0	133.7	85.8	71.5	93.2	124.4	124.4	88.0	66.6	103.3	95.5	88.5	100.6	

* Preliminary data.

„..“ - Confidential data.