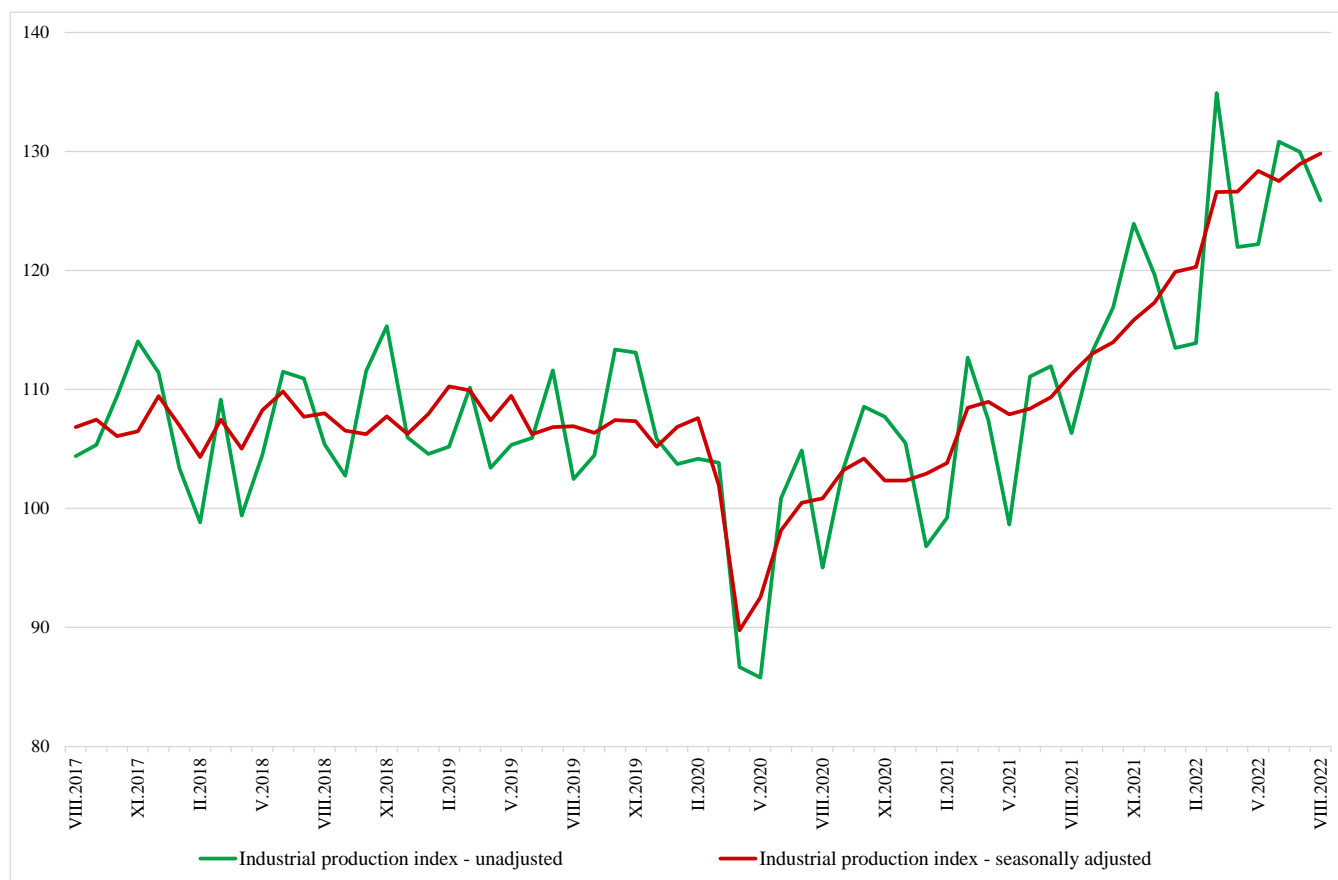


INDUSTRIAL PRODUCTION INDICES IN AUGUST 2022¹

The Industrial Production Index² increased by 0.7% in August 2022 compared to July 2022. The data are preliminary and seasonally adjusted³.

In August 2022, the calendar adjusted⁴ Industrial Production Index rose by 16.5% in comparison with the same month of 2021.

Figure 1. Industrial Production Indices (2015 = 100)



¹ August 2022 data is preliminary. The final data on Industrial Production and Turnover Indices for July 2022 can be found on the NSI website: <http://www.nsi.bg/en>.

² The Monthly Industrial Production and Industrial Turnover Indices measure changes in production and turnover values of industrial enterprises. This information can be used to assess the current economic development and for short-term forecasts. Indices do not measure the actual production level; they aim to measure the average change in the value of production between two points in time. Indices are compiled based on information collected through a representative sampling survey on industrial enterprises. The sample covers enterprises with an annual turnover of more than 97% of the total turnover in the industry. Industrial production indices are calculated at a constant base year that is to say they are weighted with the structure of the value added at factor costs in the base year.

³ Seasonal adjustment is a statistical method, which eliminates the seasonal component of the time series.

⁴ Calendar adjustment is an adjustment for variations caused by calendar effects, the different number of calendar and working days in the months, national holidays and outliers (for example, the presence of more non-working days in May could contribute to the decline in production in some activities).

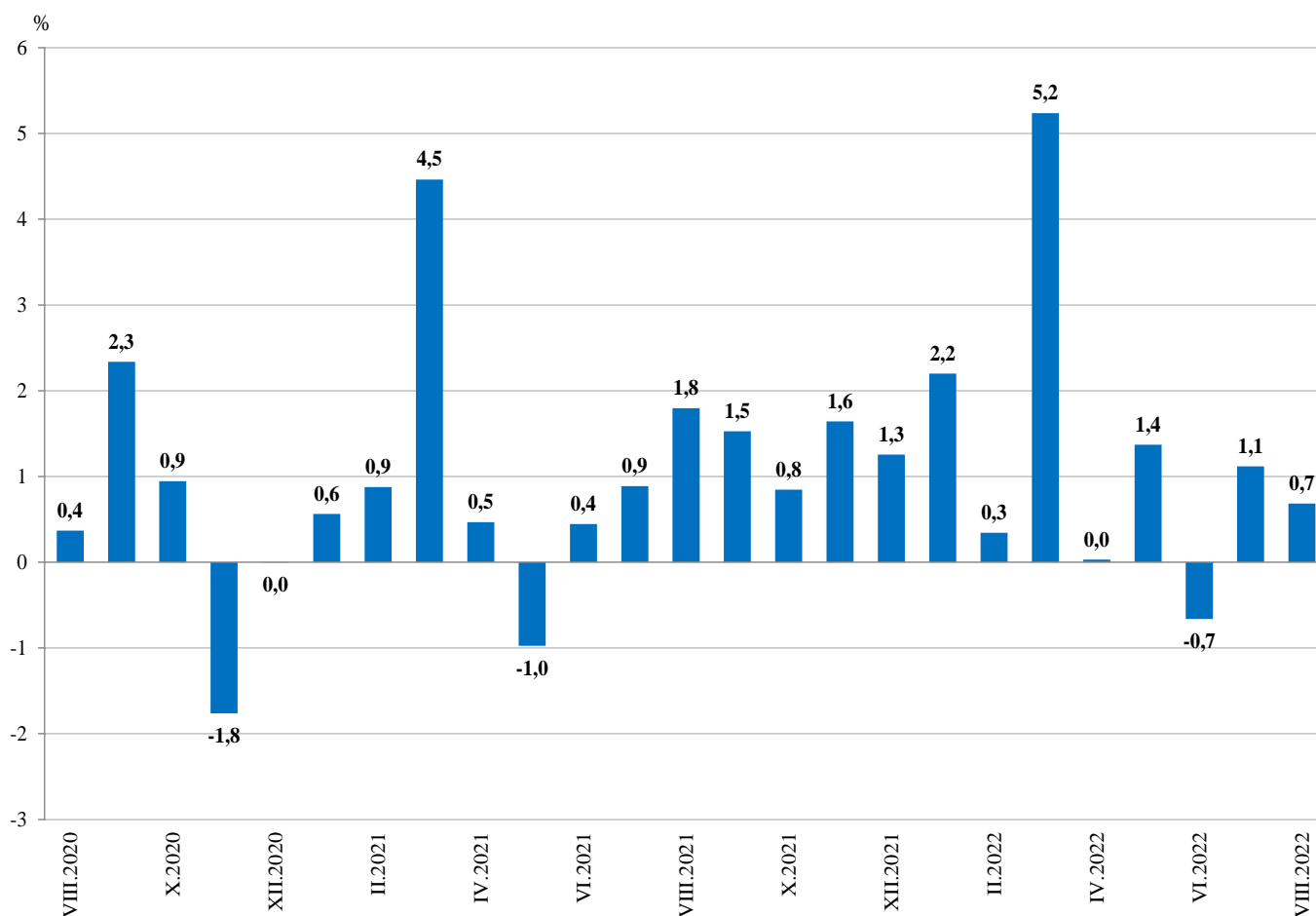
Monthly changes

Compared to the previous month an increase was reported in the electricity, gas, steam and air conditioning supply - by 1.5% and in manufacturing - by 1.2%, while a decrease was seen in the mining and quarrying industry - by 7.6%.

Major growth was observed in the manufacture of tobacco products - by 17.1%, in the manufacture of food products - by 11.4%, in the manufacture of motor vehicles, trailers and semi-trailers - by 10.9% and in the repair and installation of machinery and equipment - by 9.3%.

A decrease was seen in the manufacture of chemicals and chemical products - by 11.6%, in the manufacture of computer, electronic and optical products - by 10.3%, in the manufacture of other transport equipment and in the manufacture of furniture - both by 8.5% and in the manufacture of wood and of products of wood and cork, except furniture; manufacture of articles of straw and plaiting materials - by 8.4%.

Figure 2. Changes of Industrial Production Indices compared to the previous month (Seasonally adjusted)



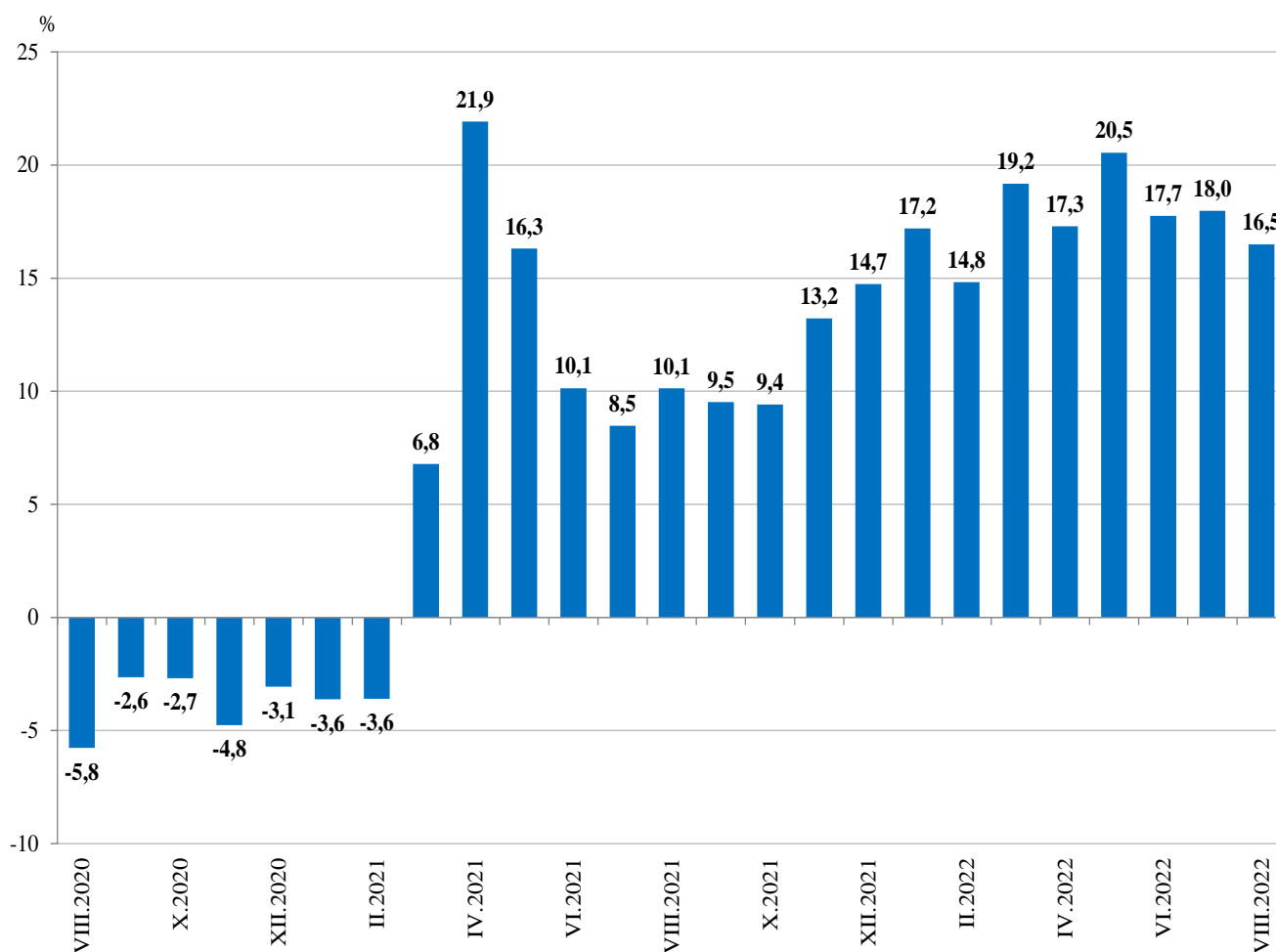
Annual changes

Growth compared to August 2021 was reported in the electricity, gas, steam and air conditioning supply - by 51.3% and in manufacturing - by 12.7%, while a decline was observed in the mining and quarrying industry - by 5.7%.

The most significant increase in the manufacturing compared to the same month of the previous year was registered in manufacture of other transport equipment - by 68.3%, in the manufacture of fabricated metal products, except machinery and equipment - by 42.1%, in the manufacture of beverages - by 41.9%, in the other manufacturing - by 33.3% and in the manufacture of tobacco products - by 32.6%.

A decrease was seen in the manufacture of basic pharmaceutical products and pharmaceutical preparations - by 14.2%, in the manufacture of chemicals and chemical products - by 13.7%, in the printing and reproduction of recorded media and in the manufacture of rubber and plastic products - both by 12.8%.

Figure 3. Changes of Industrial Production Indices compared to the same month of the previous year (Calendar adjusted)





Annex

Table 1

Changes of Industrial Production Indices compared to the previous month¹

(Percent)

Economic activities	NACE.BG - 2008	2022					
		III	IV	V	VI	VII	VIII*
Industry	B_TO_E36	5.2	0.0	1.4	-0.7	1.1	0.7
Mining and quarrying	B	9.6	-16.2	13.0	-9.9	6.0	-7.6
Mining of coal and lignite	B05	12.9	-19.8	8.5	-12.1	7.4	-15.7
Extraction of crude petroleum and natural gas	B06
Mining of metal ores	B07	9.9	-20.5	26.6	-5.3	-3.2	1.1
Other mining and quarrying	B08	5.5	-5.4	-3.5	-0.5	-0.3	1.5
Mining support service activities	B09
Manufacturing	C	2.3	4.2	1.6	-2.2	-1.5	1.2
Manufacture of food products	C10	3.7	0.6	1.8	-7.0	-2.9	11.4
Manufacture of beverages	C11	4.0	3.4	-3.6	0.8	-6.1	2.7
Manufacture of tobacco products	C12	14.3	12.1	3.3	11.8	-16.4	17.1
Manufacture of textiles	C13	0.5	0.0	-6.1	1.9	-2.9	7.1
Manufacture of wearing apparel	C14	7.5	4.9	-1.4	-4.8	-3.2	-3.5
Manufacture of leather and related products	C15	-4.8	3.3	-7.3	-2.1	-3.0	-2.4
Manufacture of wood and of products of wood and cork, except furniture; manufacture of articles of straw and plaiting materials	C16	12.4	-1.4	0.2	-15.8	4.2	-8.4
Manufacture of paper and paper products	C17	4.5	-0.6	4.3	-2.1	0.8	-3.7
Printing and reproduction of recorded media	C18	5.4	2.1	-0.1	-8.2	2.6	-2.4
Manufacture of coke and refined petroleum products	C19
Manufacture of chemicals and chemical products	C20	-1.9	-7.1	1.3	-9.1	-3.5	-11.6
Manufacture of basic pharmaceutical products and pharmaceutical preparations	C21	0.0	10.5	-2.0	11.5	-8.5	-7.1
Manufacture of rubber and plastic products	C22	0.1	0.1	-0.1	-3.3	-1.8	-4.7
Manufacture of other non-metallic mineral products	C23	-2.2	0.9	2.5	-5.2	-0.7	6.8
Manufacture of basic metals	C24	0.3	-1.0	8.9	-4.0	-4.6	4.0
Manufacture of fabricated metal products, except machinery and equipment	C25	5.6	47.6	-13.7	-4.2	-7.1	7.7
Manufacture of computer, electronic and optical products	C26	4.8	14.5	3.4	-2.8	8.5	-10.3
Manufacture of electrical equipment	C27	1.8	4.6	1.5	-0.8	-0.5	-1.2
Manufacture of machinery and equipment n.e.c.	C28	2.5	0.4	3.1	-3.6	3.9	-0.3
Manufacture of motor vehicles, trailers and semi-trailers	C29	3.3	-12.0	5.6	10.1	-11.0	10.9
Manufacture of other transport equipment	C30	-12.6	9.1	11.6	12.0	13.3	-8.5
Manufacture of furniture	C31	-0.5	-4.8	5.0	-4.0	-2.6	-8.5
Other manufacturing	C32	15.2	1.6	4.1	10.8	-18.8	-0.2
Repair and installation of machinery and equipment	C33	11.8	-10.7	27.1	-20.9	3.7	9.3
Electricity, gas, steam and air conditioning supply	D	24.2	-19.9	-1.4	16.7	13.8	1.5
Electricity, gas, steam and air conditioning supply	D35	24.2	-19.9	-1.4	16.7	13.8	1.5

¹ Seasonally adjusted.

* Preliminary data.

„..“ - Confidential data.



Table 2

Changes of Industrial Production Indices compared to the same month of the previous year¹

(Percent)

Economic activities	NACE.BG - 2008	2022					
		III	IV	V	VI	VII	VIII*
Industry	B_TO_E36	19.2	17.3	20.5	17.7	18.0	16.5
Mining and quarrying	B	23.0	7.1	18.6	2.3	19.8	-5.7
Mining of coal and lignite	B05	81.7	51.3	86.0	43.1	73.8	4.9
Extraction of crude petroleum and natural gas	B06	-64.1	-56.6	-71.4	-62.7	407.1	-69.4
Mining of metal ores	B07	-0.9	-14.3	8.3	-14.3	0.1	-13.7
Other mining and quarrying	B08	7.8	4.2	-1.2	2.9	-0.5	9.4
Mining support service activities	B09						
Manufacturing	C	13.1	18.4	21.5	16.5	12.4	12.7
Manufacture of food products	C10	15.3	11.0	15.4	10.0	2.2	19.0
Manufacture of beverages	C11	40.1	42.7	40.5	51.1	29.6	41.9
Manufacture of tobacco products	C12	-1.4	2.0	8.0	2.7	-20.7	32.6
Manufacture of textiles	C13	10.1	5.7	2.9	0.8	-2.7	-5.9
Manufacture of wearing apparel	C14	22.1	26.9	32.5	19.2	15.2	2.5
Manufacture of leather and related products	C15	-1.8	-0.6	-0.2	-0.7	-11.3	-9.0
Manufacture of wood and of products of wood and cork. except furniture; manufacture of articles of straw and plaiting materials	C16	36.1	27.5	22.7	10.1	11.5	-7.1
Manufacture of paper and paper products	C17	8.3	9.4	18.3	6.9	6.6	-2.0
Printing and reproduction of recorded media	C18	-0.3	5.3	10.4	-7.0	-4.5	-12.8
Manufacture of coke and refined petroleum products	C19	30.4	-2.1	89.1	41.2	29.6	20.4
Manufacture of chemicals and chemical products	C20	23.6	31.1	22.2	0.6	-3.4	-13.7
Manufacture of basic pharmaceutical products and pharmaceutical preparations	C21	-9.6	16.3	7.0	29.9	7.7	-14.2
Manufacture of rubber and plastic products	C22	1.9	-1.8	0.6	-4.4	0.3	-12.8
Manufacture of other non-metallic mineral products	C23	14.0	18.9	13.4	8.8	7.4	10.5
Manufacture of basic metals	C24	3.4	-2.5	17.4	13.4	20.8	25.3
Manufacture of fabricated metal products. except machinery and equipment	C25	2.6	43.6	22.9	28.8	6.3	42.1
Manufacture of computer. electronic and optical products	C26	23.0	42.9	41.3	37.8	50.2	23.7
Manufacture of electrical equipment	C27	6.0	5.1	9.8	11.1	12.6	8.9
Manufacture of machinery and equipment n.e.c.	C28	18.0	19.8	23.8	8.6	18.2	15.2
Manufacture of motor vehicles. trailers and semi-trailers	C29	3.7	-0.4	20.1	19.0	14.7	8.1
Manufacture of other transport equipment	C30	-6.4	-3.5	37.0	13.5	39.5	68.3
Manufacture of furniture	C31	10.4	3.5	12.3	4.3	1.2	-6.0
Other manufacturing	C32	93.8	57.2	96.2	99.7	42.9	33.3
Repair and installation of machinery and equipment	C33	15.6	8.4	35.9	10.5	20.1	23.7
Electricity, gas, steam and air conditioning supply	D	53.0	19.5	14.1	39.3	52.0	51.3
Electricity, gas, steam and air conditioning supply	D35	53.0	19.5	14.1	39.3	52.0	51.3

¹ Calendar adjusted.

* Preliminary data.

„...“ - Confidential data.



Table 3

Industrial Production Indices
(Seasonally adjusted. 2015 = 100)

NACE.BG - 2008	2021					2022							
	VIII	IX	X	XI	XII	I	II	III	IV	V	VI	VII	VIII*
B_TO_E36	111.3	113.0	114.0	115.8	117.3	119.9	120.3	126.6	126.6	128.4	127.5	128.9	129.8
B	124.6	123.8	114.3	124.1	123.3	135.6	129.2	141.6	118.6	134.0	120.7	128.0	118.2
B05	97.5	109.1	114.6	115.6	112.5	130.0	132.6	149.6	120.0	130.2	114.5	122.9	103.6
B06
B07	140.2	133.0	108.9	134.6	135.4	127.5	118.2	129.9	103.2	130.7	123.8	119.7	121.0
B08	135.5	146.1	135.6	141.8	146.4	158.5	153.5	161.9	153.1	147.8	147.0	146.6	148.8
B09
C	116.4	117.2	117.0	118.3	121.0	125.0	125.4	128.3	133.7	135.8	132.8	130.8	132.3
C10	111.7	112.1	114.6	115.2	115.9	122.8	123.5	128.2	128.9	131.2	121.9	118.4	131.9
C11	64.4	62.2	64.5	67.6	62.3	98.6	88.2	91.7	94.9	91.5	92.2	86.6	88.9
C12	35.8	42.0	32.2	34.1	26.9	36.3	31.3	35.8	40.1	41.5	46.4	38.8	45.4
C13	125.3	121.8	126.6	115.6	129.7	122.0	117.0	117.5	117.5	110.4	112.5	109.2	116.9
C14	74.0	71.2	73.7	75.7	77.4	79.5	78.3	84.2	88.3	87.1	82.9	80.3	77.4
C15	69.6	70.5	72.0	74.2	75.0	78.2	76.6	73.0	75.4	69.9	68.4	66.4	64.7
C16	90.8	89.2	79.0	79.2	88.5	95.4	96.6	108.5	107.0	107.3	90.3	94.1	86.3
C17	108.4	109.7	107.0	104.3	108.3	104.8	104.1	108.8	108.1	112.7	110.3	111.2	107.1
C18	125.9	116.8	122.2	124.8	120.3	121.2	112.2	118.2	120.7	120.6	110.8	113.6	110.9
C19
C20	120.1	119.2	130.0	135.6	140.9	154.8	147.9	145.1	134.8	136.6	124.1	119.7	105.8
C21	132.0	117.9	123.5	124.4	124.7	123.9	115.3	115.3	127.5	124.9	139.2	127.4	118.3
C22	151.8	142.0	141.3	139.6	146.2	154.2	149.2	149.3	149.5	149.4	144.6	141.9	135.2
C23	123.8	122.2	121.7	127.4	117.1	132.7	134.2	131.2	132.5	135.7	128.7	127.8	136.5
C24	96.0	95.8	105.3	105.3	111.4	114.3	116.8	117.1	116.0	126.4	121.3	115.7	120.4
C25	109.1	122.2	115.7	116.1	117.2	127.7	119.5	126.2	186.3	160.8	154.1	143.1	154.2
C26	224.3	236.5	278.7	268.7	205.4	254.7	239.4	250.8	287.1	296.9	288.5	312.9	280.6
C27	148.9	153.6	145.0	147.1	150.9	153.7	154.9	157.7	164.9	167.3	166.0	165.2	163.2
C28	118.7	116.1	120.8	121.3	121.7	129.1	128.8	132.0	132.5	136.6	131.7	136.8	136.4
C29	144.9	116.0	103.4	122.8	153.7	135.6	148.2	153.0	134.7	142.2	156.5	139.3	154.5
C30	190.2	252.5	227.2	219.6	257.3	206.9	240.8	210.3	229.5	256.1	286.9	325.1	297.6
C31	102.2	108.3	110.0	108.0	103.7	118.4	116.7	116.0	110.5	116.0	111.3	108.4	99.2
C32	150.3	170.2	132.7	176.2	201.3	179.4	185.4	213.6	217.0	226.0	250.4	203.3	202.9
C33	108.1	121.2	115.2	93.9	117.3	112.5	117.2	131.0	117.0	148.7	117.6	121.9	133.3
D	88.9	96.1	105.9	102.8	98.7	94.6	96.5	119.9	96.0	94.7	110.6	125.8	127.8
35	88.9	96.1	105.9	102.8	98.7	94.6	96.5	119.9	96.0	94.7	110.6	125.8	127.8

* Preliminary data.

„..“ - Confidential data.



Table 4

Industrial Production Indices
(Calendar adjusted. 2015 = 100)

NACE.BG - 2008	2019	2020	2021					2022							
	VIII	VIII	VIII	IX	X	XI	XII	I	II	III	IV	V	VI	VII	VIII*
B_TO_E36	110.1	103.5	106.6	113.2	119.0	122.8	119.7	116.1	114.6	133.1	123.6	123.4	129.6	132.4	124.2
B	99.4	96.3	122.3	129.3	127.6	134.1	133.6	132.6	123.8	137.9	109.0	125.7	116.5	124.1	115.3
B05	70.7	56.5	94.0	114.8	136.0	129.1	129.1	144.1	135.0	144.4	101.2	113.5	94.7	114.7	98.7
B06
B07	125.8	131.8	140.2	133.0	108.9	134.6	135.4	127.5	118.2	129.9	103.2	130.7	123.8	119.7	121.0
B08	111.7	107.3	143.2	158.6	150.0	159.7	148.5	110.8	120.4	154.3	149.8	150.8	157.7	155.7	156.7
B09
C	119.3	112.3	110.9	118.3	123.9	125.4	117.1	115.1	117.4	133.8	135.3	137.1	140.8	135.9	124.9
C10	108.8	108.0	112.1	117.8	125.9	122.2	120.0	109.9	109.1	129.0	122.7	130.5	125.0	118.2	133.4
C11	126.1	121.9	81.4	69.3	60.3	60.9	62.3	63.2	59.9	80.9	87.5	94.6	111.6	109.1	115.5
C12	56.9	39.7	32.8	44.7	35.2	38.5	26.9	20.6	18.9	35.7	45.7	50.4	61.8	49.8	43.5
C13	97.3	99.7	100.7	118.2	135.8	118.7	115.6	112.1	117.7	127.0	118.7	117.9	122.7	109.4	94.7
C14	97.6	85.8	72.3	69.7	74.5	76.5	74.3	86.5	78.6	86.0	81.8	81.3	86.9	91.8	74.2
C15	99.7	90.4	56.9	67.5	77.1	80.4	69.9	84.0	77.5	73.2	70.3	63.7	71.9	76.0	51.8
C16	82.3	76.5	90.7	94.2	84.7	84.2	84.2	81.0	84.5	107.6	107.1	112.1	94.6	100.9	84.3
C17	101.8	87.0	107.6	109.3	110.0	105.5	105.1	103.7	101.2	112.6	106.0	112.9	112.3	114.2	105.4
C18	119.4	100.0	120.1	112.8	130.8	142.3	122.2	108.3	102.6	118.7	119.1	121.3	111.8	113.9	104.7
C19
C20	119.8	117.9	116.1	117.3	133.1	137.9	138.1	145.5	141.1	158.7	133.6	135.4	127.7	122.5	100.2
C21	128.7	115.5	121.4	112.4	124.6	137.9	130.1	121.4	101.5	127.1	128.2	121.8	147.9	128.4	104.2
C22	141.3	149.6	147.4	144.8	155.4	144.5	128.6	142.6	143.4	156.4	144.9	146.4	149.3	148.6	128.5
C23	117.1	124.4	130.8	131.3	136.1	138.8	103.1	95.1	109.3	128.2	136.0	146.7	138.7	138.3	144.6
C24	116.1	114.3	86.7	86.4	108.8	112.7	107.2	120.6	117.3	127.5	120.2	125.2	118.8	115.5	108.7
C25	126.6	110.7	105.7	125.7	119.9	127.1	128.0	97.2	109.1	126.7	188.0	156.9	164.9	152.9	150.1
C26	158.2	150.6	197.0	226.8	311.5	300.8	207.7	245.8	225.1	260.3	283.0	290.1	298.2	320.9	243.6
C27	125.8	135.7	134.2	158.8	157.6	159.4	133.6	146.2	152.2	165.8	164.9	161.7	175.1	169.8	146.2
C28	122.8	99.2	103.2	115.7	128.0	130.0	115.9	119.6	124.0	139.0	136.8	133.7	140.3	143.3	118.9
C29	141.8	126.5	125.9	114.9	109.1	134.4	138.6	136.0	151.9	165.9	133.7	135.0	166.1	132.1	136.1
C30	146.9	153.8	145.4	224.8	225.6	230.8	217.6	185.8	259.8	237.6	249.2	258.7	325.8	348.7	244.7
C31	110.3	108.9	99.6	111.5	120.1	116.6	100.5	106.8	107.9	118.5	103.9	112.8	116.0	114.2	93.6
C32	167.4	105.6	149.6	181.5	142.5	192.8	182.8	159.9	166.9	217.5	211.6	218.5	285.6	203.9	199.4
C33	122.6	125.6	104.8	127.4	120.4	104.9	156.3	81.0	100.7	134.1	104.6	140.9	120.6	124.5	129.6
D	77.0	69.8	82.4	86.7	99.5	111.4	125.2	117.3	100.9	133.7	85.9	71.6	93.1	124.4	124.7
D35	77.0	69.8	82.4	86.7	99.5	111.4	125.2	117.3	100.9	133.7	85.9	71.6	93.1	124.4	124.7

* Preliminary data.

„..“ - Confidential data.