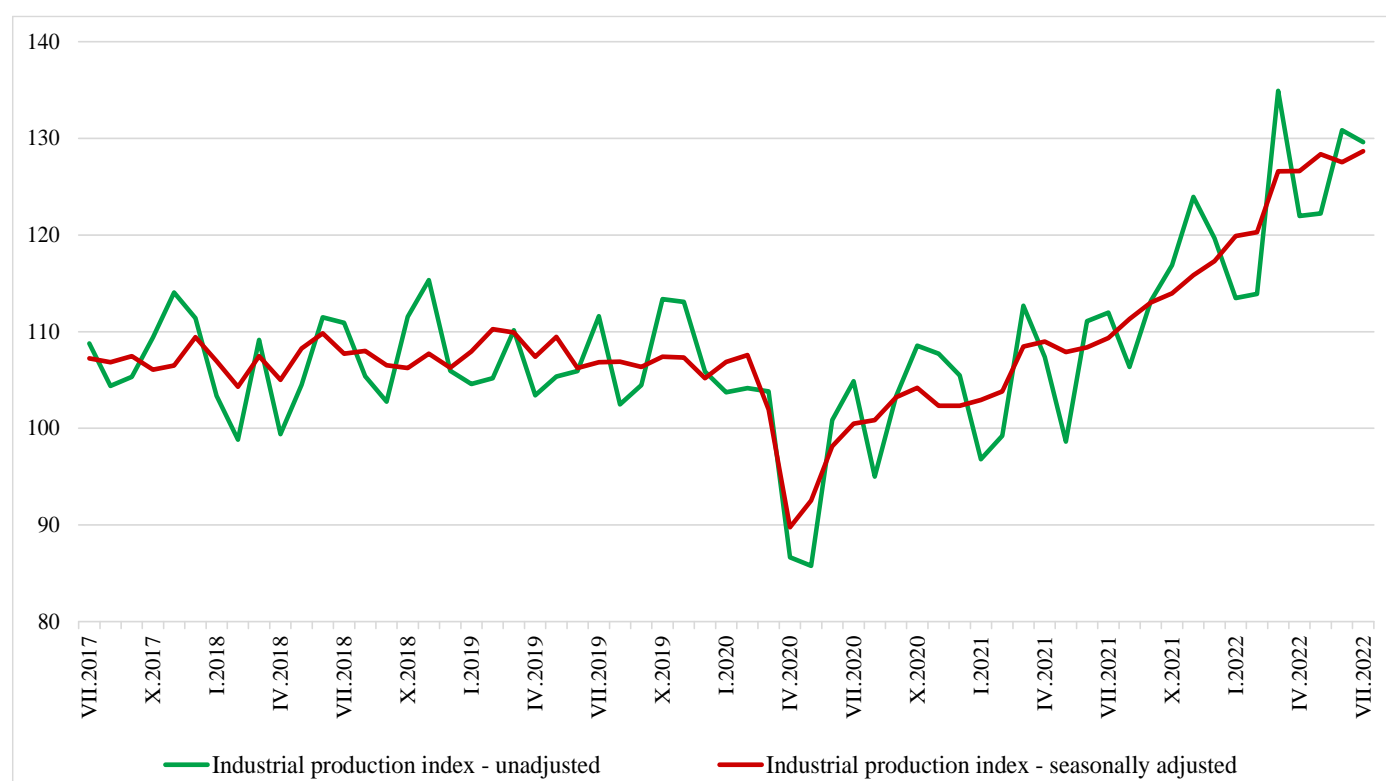


## INDUSTRIAL PRODUCTION INDICES IN JUNE 2022<sup>1</sup>

The Industrial Production Index<sup>2</sup> increased by 0.9% in July 2022 compared to June 2022. The data are preliminary and seasonally adjusted<sup>3</sup>.

In July 2022, the calendar adjusted<sup>4</sup> Industrial Production Index rose by 17.7% in comparison with the same month of 2021.

**Figure 1. Industrial Production Indices (2015 = 100)**



<sup>1</sup> July 2022 data is preliminary. The final data on Industrial Production and Turnover Indices for June 2022 can be found on the NSI website: <http://www.nsi.bg/en>.

<sup>2</sup> The Monthly Industrial Production and Industrial Turnover Indices measure changes in production and turnover values of industrial enterprises. This information can be used to assess the current economic development and for short-term forecasts. Indices do not measure the actual production level; they aim to measure the average change in the value of production between two points in time. Indices are compiled based on information collected through a representative sampling survey on industrial enterprises. The sample covers enterprises with an annual turnover of more than 97% of the total turnover in the industry. Industrial production indices are calculated at a constant base year that is to say they are weighted with the structure of the value added at factor costs in the base year.

<sup>3</sup> Seasonal adjustment is a statistical method, which eliminates the seasonal component of the time series.

<sup>4</sup> Calendar adjustment is an adjustment for variations caused by calendar effects, a different number of calendar and working days in the months, national holidays and outliers (for example, the presence of more non-working days in May could contribute to the decline in production in some activities).

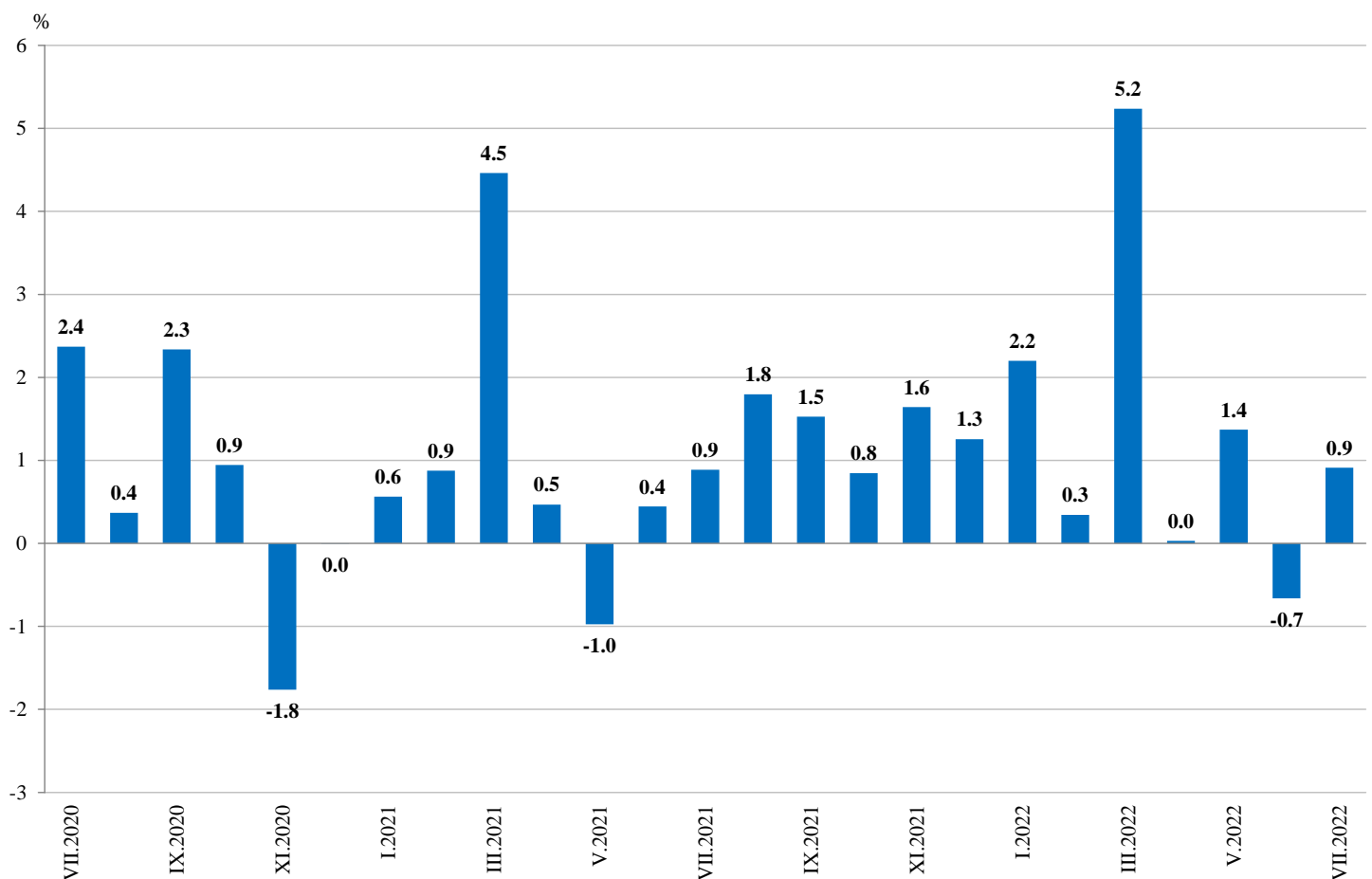
## Monthly changes

An increase compared to the previous month was reported in the electricity, gas, steam and air conditioning supply - by 12.7%, in the mining and quarrying industry - by 3.9%, and a decrease in manufacturing - by 1.6%.

The most significant decrease was seen in the other manufacturing - by 17.8%, in the manufacture of tobacco products - by 16.9%, in the manufacture of motor vehicles, trailers and semi-trailers - by 10.7%, in the manufacture of chemicals and chemical products and in the manufacture of fabricated metal products, except machinery and equipment - both by 8.1%.

Major growth was registered in the manufacture of other transport equipment - by 10.1% and in the manufacture of computer, electronic and optical products - by 9.1%.

**Figure 2. Changes of Industrial Production Indices compared to the previous month (Seasonally adjusted)**



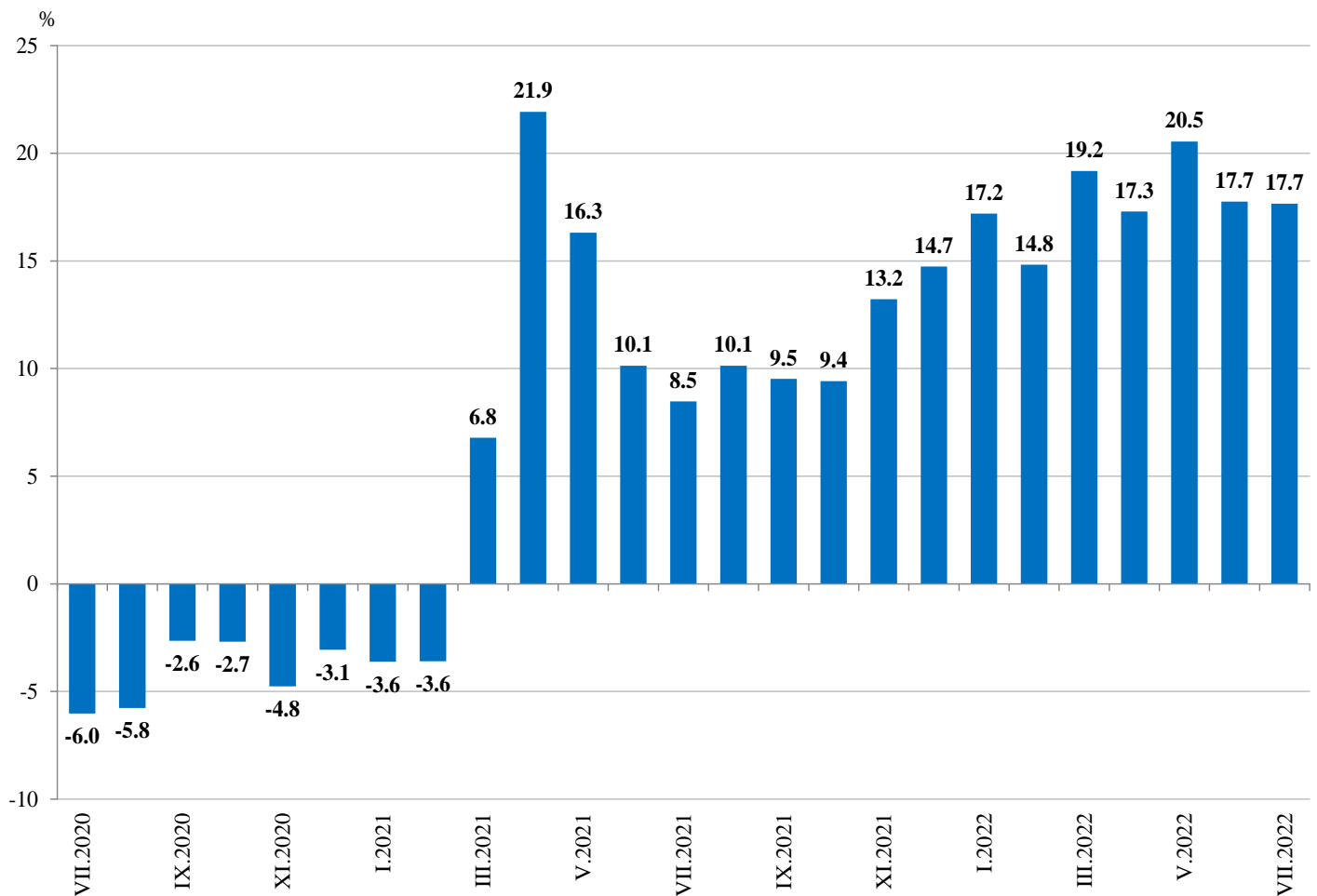
### Annual changes

Growth compared to July 2021 was reported in the electricity, gas, steam and air conditioning supply - by 51.7%, in the mining and quarrying industry - by 17.9% and in manufacturing - by 12.1%.

The most significant growth in manufacturing compared to the same month of the previous year was registered in the manufacture of computer, electronic and optical products - by 50.6%, in the other manufacturing - by 44.3%, in the manufacture of other transport equipment - by 32.7% and in the manufacture of beverages - by 29.7%.

A decrease was seen in the manufacture of tobacco products - by 20.7%, in the manufacture of leather and related products - by 11.3%, in the printing and reproduction of recorded media - by 4.4%, in the manufacture of chemicals and chemical products - by 4.0% and in the manufacture of textiles - by 2.7%.

**Figure 3. Changes of Industrial Production Indices compared to the same month of the previous year (Calendar adjusted)**





Annex

Table 1

Changes of Industrial Production Indices compared to the previous month<sup>1</sup>

(Percent)

Economic activities	NACE.BG - 2008	2022					
		II	III	IV	V	VI	VII*
<b>Industry</b>	<b>B_TO_E36</b>	<b>0.3</b>	<b>5.2</b>	<b>0.0</b>	<b>1.4</b>	<b>-0.7</b>	<b>0.9</b>
<b>Mining and quarrying</b>	<b>B</b>	<b>-4.7</b>	<b>9.6</b>	<b>-16.2</b>	<b>13.0</b>	<b>-9.9</b>	<b>3.9</b>
Mining of coal and lignite	B05	2.0	12.9	-19.8	8.5	-12.1	8.2
Extraction of crude petroleum and natural gas	B06	..	..	..	..	..	..
Mining of metal ores	B07	-7.3	9.9	-20.5	26.6	-5.3	-3.2
Other mining and quarrying	B08	-3.2	5.5	-5.4	-3.5	-0.5	-0.8
Mining support service activities	B09	..	..	..	..	..	..
<b>Manufacturing</b>	<b>C</b>	<b>0.3</b>	<b>2.3</b>	<b>4.2</b>	<b>1.6</b>	<b>-2.2</b>	<b>-1.6</b>
Manufacture of food products	C10	0.5	3.7	0.6	1.8	-7.0	-3.8
Manufacture of beverages	C11	-10.6	4.0	3.4	-3.6	0.8	-6.2
Manufacture of tobacco products	C12	-13.8	14.3	12.1	3.3	11.8	-16.9
Manufacture of textiles	C13	-4.1	0.5	0.0	-6.1	1.9	-3.5
Manufacture of wearing apparel	C14	-1.5	7.5	4.9	-1.4	-4.8	-2.7
Manufacture of leather and related products	C15	-2.0	-4.8	3.3	-7.3	-2.1	-2.7
Manufacture of wood and of products of wood and cork, except furniture; manufacture of articles of straw and plaiting materials	C16	1.3	12.4	-1.4	0.2	-15.8	4.3
Manufacture of paper and paper products	C17	-0.7	4.5	-0.6	4.3	-2.1	2.5
Printing and reproduction of recorded media	C18	-7.4	5.4	2.1	-0.1	-8.2	2.9
Manufacture of coke and refined petroleum products	C19	..	..	..	..	..	..
Manufacture of chemicals and chemical products	C20	-4.4	-1.9	-7.1	1.3	-9.1	-3.5
Manufacture of basic pharmaceutical products and pharmaceutical preparations	C21	-7.0	0.0	10.5	-2.0	11.5	-8.1
Manufacture of rubber and plastic products	C22	-3.3	0.1	0.1	-0.1	-3.3	-1.0
Manufacture of other non-metallic mineral products	C23	1.1	-2.2	0.9	2.5	-5.2	-0.7
Manufacture of basic metals	C24	2.1	0.3	-1.0	8.9	-4.0	-4.6
Manufacture of fabricated metal products, except machinery and equipment	C25	-6.4	5.6	47.6	-13.7	-4.2	-8.1
Manufacture of computer, electronic and optical products	C26	-6.0	4.8	14.5	3.4	-2.8	9.1
Manufacture of electrical equipment	C27	0.8	1.8	4.6	1.5	-0.8	-1.1
Manufacture of machinery and equipment n.e.c.	C28	-0.2	2.5	0.4	3.1	-3.6	3.2
Manufacture of motor vehicles, trailers and semi-trailers	C29	9.3	3.3	-12.0	5.6	10.1	-10.7
Manufacture of other transport equipment	C30	16.4	-12.6	9.1	11.6	12.0	10.1
Manufacture of furniture	C31	-1.5	-0.5	-4.8	5.0	-4.0	-1.8
Other manufacturing	C32	3.4	15.2	1.6	4.1	10.8	-17.8
Repair and installation of machinery and equipment	C33	4.1	11.8	-10.7	27.1	-20.9	3.4
<b>Electricity, gas, steam and air conditioning supply</b>	<b>D</b>	<b>2.1</b>	<b>24.2</b>	<b>-19.9</b>	<b>-1.4</b>	<b>16.7</b>	<b>12.7</b>
Electricity, gas, steam and air conditioning supply	D35	2.1	24.2	-19.9	-1.4	16.7	12.7

<sup>1</sup> Seasonally adjusted.

\* Preliminary data.

„..“ - Confidential data.



**Table 2**

**Changes of Industrial Production Indices compared to the same month of the previous year<sup>1</sup>**

(Percent)

Economic activities	NACE.BG - 2008	2022					
		II	III	IV	V	VI	VII*
<b>Industry</b>	<b>B_TO_E36</b>	<b>14.8</b>	<b>19.2</b>	<b>17.3</b>	<b>20.5</b>	<b>17.7</b>	<b>17.7</b>
<b>Mining and quarrying</b>	<b>B</b>	<b>17.4</b>	<b>23.0</b>	<b>7.1</b>	<b>18.6</b>	<b>2.3</b>	<b>17.9</b>
Mining of coal and lignite	B05	108.7	81.7	51.3	86.0	43.1	73.8
Extraction of crude petroleum and natural gas	B06	..	..	..	..	..	..
Mining of metal ores	B07	-15.7	-0.9	-14.3	8.3	-14.3	0.1
Other mining and quarrying	B08	10.8	7.8	4.2	-1.2	2.9	-1.1
Mining support service activities	B09	..	..	..	..	..	..
<b>Manufacturing</b>	<b>C</b>	<b>12.1</b>	<b>13.1</b>	<b>18.4</b>	<b>21.5</b>	<b>16.5</b>	<b>12.1</b>
Manufacture of food products	C10	12.4	15.3	11.0	15.4	10.0	1.4
Manufacture of beverages	C11	30.8	40.1	42.7	40.5	51.1	29.7
Manufacture of tobacco products	C12	-15.9	-1.4	2.0	8.0	2.7	-20.7
Manufacture of textiles	C13	1.4	10.1	5.7	2.9	0.8	-2.7
Manufacture of wearing apparel	C14	8.0	22.1	26.9	32.5	19.2	14.9
Manufacture of leather and related products	C15	16.9	-1.8	-0.6	-0.2	-0.7	-11.3
Manufacture of wood and of products of wood and cork, except furniture; manufacture of articles of straw and plaiting materials	C16	30.8	36.1	27.5	22.7	10.1	10.8
Manufacture of paper and paper products	C17	6.6	8.3	9.4	18.3	6.9	7.1
Printing and reproduction of recorded media	C18	-1.0	-0.3	5.3	10.4	-7.0	-4.4
Manufacture of coke and refined petroleum products	C19	..	..	..	..	..	..
Manufacture of chemicals and chemical products	C20	25.0	23.6	31.1	22.2	0.6	-4.0
Manufacture of basic pharmaceutical products and pharmaceutical preparations	C21	2.9	-9.6	16.3	7.0	29.9	7.6
Manufacture of rubber and plastic products	C22	-1.4	1.9	-1.8	0.6	-4.4	0.2
Manufacture of other non-metallic mineral products	C23	19.8	14.0	18.9	13.4	8.8	7.6
Manufacture of basic metals	C24	8.0	3.4	-2.5	17.4	13.4	20.6
Manufacture of fabricated metal products, except machinery and equipment	C25	-2.1	2.6	43.6	22.9	28.8	5.2
Manufacture of computer, electronic and optical products	C26	26.1	23.0	42.9	41.3	37.8	50.6
Manufacture of electrical equipment	C27	8.5	6.0	5.1	9.8	11.1	11.4
Manufacture of machinery and equipment n.e.c.	C28	21.3	18.0	19.8	23.8	8.6	17.3
Manufacture of motor vehicles, trailers and semi-trailers	C29	1.0	3.7	-0.4	20.1	19.0	16.1
Manufacture of other transport equipment	C30	24.7	-6.4	-3.5	37.0	13.5	32.7
Manufacture of furniture	C31	8.9	10.4	3.5	12.3	4.3	0.9
Other manufacturing	C32	59.9	93.8	57.2	96.2	99.7	44.3
Repair and installation of machinery and equipment	C33	9.2	15.6	8.4	35.9	10.5	20.0
<b>Electricity, gas, steam and air conditioning supply</b>	<b>D</b>	<b>28.5</b>	<b>53.0</b>	<b>19.5</b>	<b>14.1</b>	<b>39.3</b>	<b>51.7</b>
Electricity, gas, steam and air conditioning supply	D35	28.5	53.0	19.5	14.1	39.3	51.7

<sup>1</sup> Calendar adjusted.

\* Preliminary data.

„..“ - Confidential data.



Table 3

**Industrial Production Indices**  
(Seasonally adjusted, 2015 = 100)

NACE.BG - 2008	2021						2022						
	VII	VIII	IX	X	XI	XII	I	II	III	IV	V	VI	VII*
<b>B_TO_E36</b>	<b>109.3</b>	<b>111.3</b>	<b>113.0</b>	<b>114.0</b>	<b>115.8</b>	<b>117.3</b>	<b>119.9</b>	<b>120.3</b>	<b>126.6</b>	<b>126.6</b>	<b>128.4</b>	<b>127.5</b>	<b>128.7</b>
<b>B</b>	<b>106.4</b>	<b>124.6</b>	<b>123.8</b>	<b>114.3</b>	<b>124.1</b>	<b>123.3</b>	<b>135.6</b>	<b>129.2</b>	<b>141.6</b>	<b>118.6</b>	<b>134.0</b>	<b>120.7</b>	<b>125.5</b>
<b>B05</b>	74.3	97.5	109.1	114.6	115.6	112.5	130.0	132.6	149.6	120.0	130.2	114.5	123.8
<b>B06</b>	..	..	..	..	..	..	..	..	..	..	..	..	..
<b>B07</b>	119.7	140.2	133.0	108.9	134.6	135.4	127.5	118.2	129.9	103.2	130.7	123.8	119.7
<b>B08</b>	146.5	135.5	146.1	135.6	141.8	146.4	158.5	153.5	161.9	153.1	147.8	147.0	145.9
<b>B09</b>	..	..	..	..	..	..	..	..	..	..	..	..	..
<b>C</b>	<b>115.2</b>	<b>116.4</b>	<b>117.2</b>	<b>117.0</b>	<b>118.3</b>	<b>121.0</b>	<b>125.0</b>	<b>125.4</b>	<b>128.3</b>	<b>133.7</b>	<b>135.8</b>	<b>132.8</b>	<b>130.6</b>
<b>C10</b>	114.2	111.7	112.1	114.6	115.2	115.9	122.8	123.5	128.2	128.9	131.2	121.9	117.3
<b>C11</b>	66.9	64.4	62.2	64.5	67.6	62.3	98.6	88.2	91.7	94.9	91.5	92.2	86.5
<b>C12</b>	48.9	35.8	42.0	32.2	34.1	26.9	36.3	31.3	35.8	40.1	41.5	46.4	38.5
<b>C13</b>	110.2	125.3	121.8	126.6	115.6	129.7	122.0	117.0	117.5	117.5	110.4	112.5	108.5
<b>C14</b>	69.1	74.0	71.2	73.7	75.7	77.4	79.5	78.3	84.2	88.3	87.1	82.9	80.6
<b>C15</b>	71.9	69.6	70.5	72.0	74.2	75.0	78.2	76.6	73.0	75.4	69.9	68.4	66.6
<b>C16</b>	84.2	90.8	89.2	79.0	79.2	88.5	95.4	96.6	108.5	107.0	107.3	90.3	94.2
<b>C17</b>	106.2	108.4	109.7	107.0	104.3	108.3	104.8	104.1	108.8	108.1	112.7	110.3	113.1
<b>C18</b>	118.4	125.9	116.8	122.2	124.8	120.3	121.2	112.2	118.2	120.7	120.6	110.8	114.0
<b>C19</b>	..	..	..	..	..	..	..	..	..	..	..	..	..
<b>C20</b>	123.1	120.1	119.2	130.0	135.6	140.9	154.8	147.9	145.1	134.8	136.6	124.1	119.7
<b>C21</b>	118.9	132.0	117.9	123.5	124.4	124.7	123.9	115.3	115.3	127.5	124.9	139.2	127.9
<b>C22</b>	141.0	151.8	142.0	141.3	139.6	146.2	154.2	149.2	149.3	149.5	149.4	144.6	143.1
<b>C23</b>	118.2	123.8	122.2	121.7	127.4	117.1	132.7	134.2	131.2	132.5	135.7	128.7	127.8
<b>C24</b>	94.1	96.0	95.8	105.3	105.3	111.4	114.3	116.8	117.1	116.0	126.4	121.3	115.8
<b>C25</b>	133.6	109.1	122.2	115.7	116.1	117.2	127.7	119.5	126.2	186.3	160.8	154.1	141.6
<b>C26</b>	213.2	224.3	236.5	278.7	268.7	205.4	254.7	239.4	250.8	287.1	296.9	288.5	314.6
<b>C27</b>	147.0	148.9	153.6	145.0	147.1	150.9	153.7	154.9	157.7	164.9	167.3	166.0	164.3
<b>C28</b>	116.4	118.7	116.1	120.8	121.3	121.7	129.1	128.8	132.0	132.5	136.6	131.7	135.9
<b>C29</b>	119.3	144.9	116.0	103.4	122.8	153.7	135.6	148.2	153.0	134.7	142.2	156.5	139.8
<b>C30</b>	258.5	190.2	252.5	227.2	219.6	257.3	206.9	240.8	210.3	229.5	256.1	286.9	315.8
<b>C31</b>	107.3	102.2	108.3	110.0	108.0	103.7	118.4	116.7	116.0	110.5	116.0	111.3	109.3
<b>C32</b>	140.8	150.3	170.2	132.7	176.2	201.3	179.4	185.4	213.6	217.0	226.0	250.4	205.9
<b>C33</b>	101.0	108.1	121.2	115.2	93.9	117.3	112.5	117.2	131.0	117.0	148.7	117.6	121.6
<b>D</b>	<b>87.8</b>	<b>88.9</b>	<b>96.1</b>	<b>105.9</b>	<b>102.8</b>	<b>98.7</b>	<b>94.6</b>	<b>96.5</b>	<b>119.9</b>	<b>96.0</b>	<b>94.7</b>	<b>110.6</b>	<b>124.6</b>
<b>35</b>	87.8	88.9	96.1	105.9	102.8	98.7	94.6	96.5	119.9	96.0	94.7	110.6	124.6

\* Preliminary data.

...“ - Confidential data.



Table 4

**Industrial Production Indices**  
(Calendar adjusted, 2015 = 100)

NACE.BG - 2008	2019	2020	2021						2022						
	VII	VII	VII	VIII	IX	X	XI	XII	I	II	III	IV	V	VI	VII*
<b>B_TO_E36</b>	<b>110.1</b>	<b>103.5</b>	<b>112.2</b>	<b>106.6</b>	<b>113.2</b>	<b>119.0</b>	<b>122.8</b>	<b>119.7</b>	<b>116.1</b>	<b>114.6</b>	<b>133.1</b>	<b>123.6</b>	<b>123.4</b>	<b>129.6</b>	<b>132.0</b>
<b>B</b>	<b>99.4</b>	<b>96.3</b>	<b>103.6</b>	<b>122.3</b>	<b>129.3</b>	<b>127.6</b>	<b>134.1</b>	<b>133.6</b>	<b>132.6</b>	<b>123.8</b>	<b>137.9</b>	<b>109.0</b>	<b>125.7</b>	<b>116.5</b>	<b>122.1</b>
<b>B05</b>	70.7	56.5	66.0	94.0	114.8	136.0	129.1	129.1	144.1	135.0	144.4	101.2	113.5	94.7	114.7
<b>B06</b>	..	..	..	..	..	..	..	..	..	..	..	..	..	..	..
<b>B07</b>	125.8	131.8	119.7	140.2	133.0	108.9	134.6	135.4	127.5	118.2	129.9	103.2	130.7	123.8	119.7
<b>B08</b>	111.7	107.3	156.4	143.2	158.6	150.0	159.7	148.5	110.8	120.4	154.3	149.8	150.8	157.7	154.7
<b>B09</b>	..	..	..	..	..	..	..	..	..	..	..	..	..	..	..
<b>C</b>	<b>119.3</b>	<b>112.3</b>	<b>120.9</b>	<b>110.9</b>	<b>118.3</b>	<b>123.9</b>	<b>125.4</b>	<b>117.1</b>	<b>115.1</b>	<b>117.4</b>	<b>133.8</b>	<b>135.3</b>	<b>137.1</b>	<b>140.8</b>	<b>135.5</b>
<b>C10</b>	108.8	108.0	115.7	112.1	117.8	125.9	122.2	120.0	109.9	109.1	129.0	122.7	130.5	125.0	117.3
<b>C11</b>	126.1	121.9	84.2	81.4	69.3	60.3	60.9	62.3	63.2	59.9	80.9	87.5	94.6	111.6	109.2
<b>C12</b>	56.9	39.7	62.7	32.8	44.7	35.2	38.5	26.9	20.6	18.9	35.7	45.7	50.4	61.8	49.8
<b>C13</b>	97.3	99.7	112.4	100.7	118.2	135.8	118.7	115.6	112.1	117.7	127.0	118.7	117.9	122.7	109.4
<b>C14</b>	97.6	85.8	79.7	72.3	69.7	74.5	76.5	74.3	86.5	78.6	86.0	81.8	81.3	86.9	91.6
<b>C15</b>	99.7	90.4	85.7	56.9	67.5	77.1	80.4	69.9	84.0	77.5	73.2	70.3	63.7	71.9	76.0
<b>C16</b>	82.3	76.5	90.5	90.7	94.2	84.7	84.2	84.2	81.0	84.5	107.6	107.1	112.1	94.6	100.3
<b>C17</b>	101.8	87.0	107.2	107.6	109.3	110.0	105.5	105.1	103.7	101.2	112.6	106.0	112.9	112.3	114.8
<b>C18</b>	119.4	100.0	119.2	120.1	112.8	130.8	142.3	122.2	108.3	102.6	118.7	119.1	121.3	111.8	113.9
<b>C19</b>	..	..	..	..	..	..	..	..	..	..	..	..	..	..	..
<b>C20</b>	119.8	117.9	126.7	116.1	117.3	133.1	137.9	138.1	145.5	141.1	158.7	133.6	135.4	127.7	121.7
<b>C21</b>	128.7	115.5	119.2	121.4	112.4	124.6	137.9	130.1	121.4	101.5	127.1	128.2	121.8	147.9	128.2
<b>C22</b>	141.3	149.6	148.1	147.4	144.8	155.4	144.5	128.6	142.6	143.4	156.4	144.9	146.4	149.3	148.4
<b>C23</b>	117.1	124.4	128.8	130.8	131.3	136.1	138.8	103.1	95.1	109.3	128.2	136.0	146.7	138.7	138.6
<b>C24</b>	116.1	114.3	95.7	86.7	86.4	108.8	112.7	107.2	120.6	117.3	127.5	120.2	125.2	118.8	115.4
<b>C25</b>	126.6	110.7	143.8	105.7	125.7	119.9	127.1	128.0	97.2	109.1	126.7	188.0	156.9	164.9	151.3
<b>C26</b>	158.2	150.6	213.6	197.0	226.8	311.5	300.8	207.7	245.8	225.1	260.3	283.0	290.1	298.2	321.6
<b>C27</b>	125.8	135.7	150.8	134.2	158.8	157.6	159.4	133.6	146.2	152.2	165.8	164.9	161.7	175.1	168.0
<b>C28</b>	122.8	99.2	121.2	103.2	115.7	128.0	130.0	115.9	119.6	124.0	139.0	136.8	133.7	140.3	142.2
<b>C29</b>	141.8	126.5	115.2	125.9	114.9	109.1	134.4	138.6	136.0	151.9	165.9	133.7	135.0	166.1	133.7
<b>C30</b>	146.9	153.8	250.0	145.4	224.8	225.6	230.8	217.6	185.8	259.8	237.6	249.2	258.7	325.8	331.7
<b>C31</b>	110.3	108.9	112.8	99.6	111.5	120.1	116.6	100.5	106.8	107.9	118.5	103.9	112.8	116.0	113.8
<b>C32</b>	167.4	105.6	142.7	149.6	181.5	142.5	192.8	182.8	159.9	166.9	217.5	211.6	218.5	285.6	205.8
<b>C33</b>	122.6	125.6	103.7	104.8	127.4	120.4	104.9	156.3	81.0	100.7	134.1	104.6	140.9	120.6	124.4
<b>D</b>	<b>77.0</b>	<b>69.8</b>	<b>81.8</b>	<b>82.4</b>	<b>86.7</b>	<b>99.5</b>	<b>111.4</b>	<b>125.2</b>	<b>117.3</b>	<b>100.9</b>	<b>133.7</b>	<b>85.9</b>	<b>71.6</b>	<b>93.1</b>	<b>124.2</b>
<b>D35</b>	77.0	69.8	81.8	82.4	86.7	99.5	111.4	125.2	117.3	100.9	133.7	85.9	71.6	93.1	124.2

\* Preliminary data.

„..“ - Confidential data.