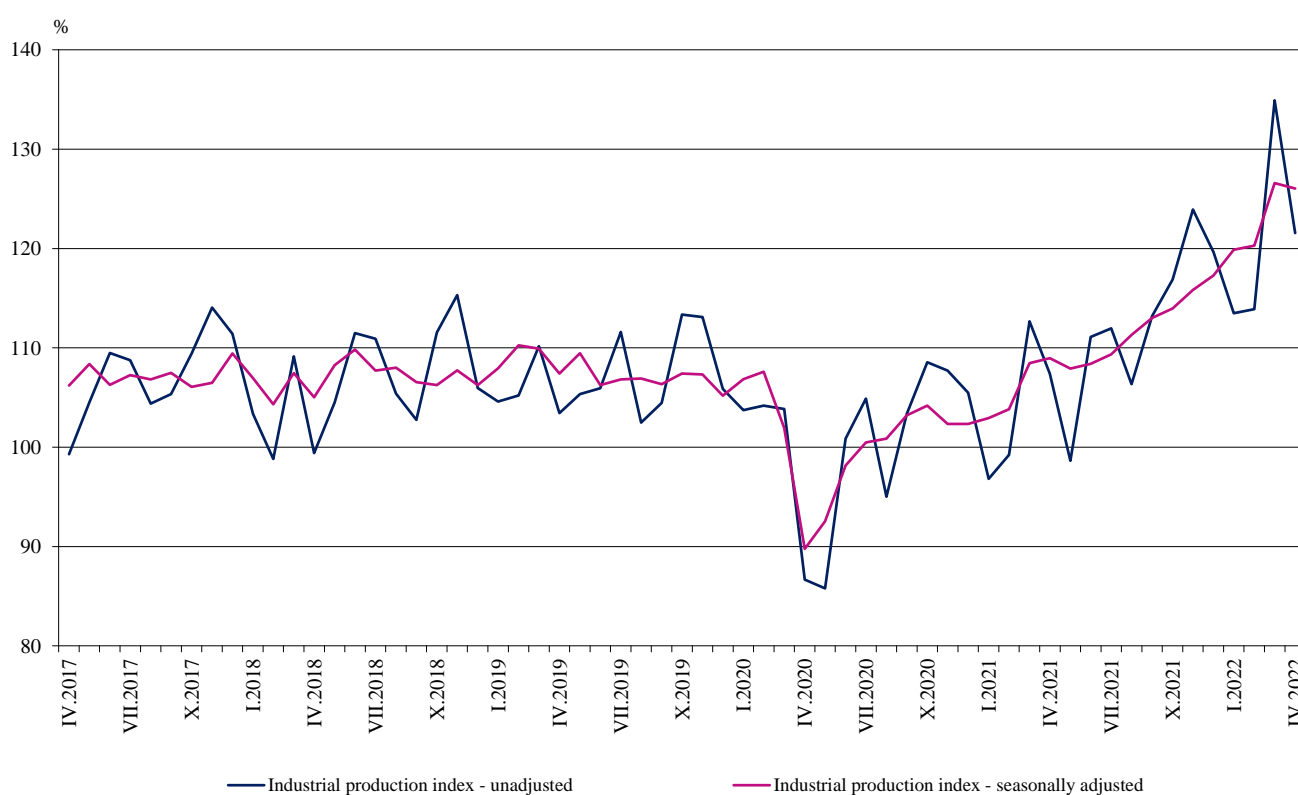


INDUSTRIAL PRODUCTION INDICES IN APRIL 2022¹

According to the preliminary data in April 2022, the Industrial Production Index², seasonally adjusted³, decreased by 0.4% compared to March 2022.

In April 2022, the calendar adjusted⁴ Industrial Production Index rose by 16.9% in comparison with the same month of 2021.

Figure 1. Industrial Production Indices (2015 = 100)



¹ April 2022 data are preliminary. The final data on Industrial Production and Turnover Indices for March 2022 can be found on the NSI website: <http://www.nsi.bg/en>.

² The Monthly Industrial Production and Industrial Turnover Indices measure changes in production and turnover values of industrial enterprises. This information can be used to assess the current economic development and for short-term forecasts. Indices do not measure the actual production level; they aim to measure the average change in the value of production between two points in time. Indices are compiled based on information collected through a representative sampling survey on industrial enterprises. The sample covers enterprises with an annual turnover of more than 97% of the total turnover in the industry. Industrial production indices are calculated at constant base year; that is to say, they are weighted with the structure of the value added at factor costs in the base year.

³ Seasonal adjustment is a statistical method, which eliminates the seasonal component of the time series.

⁴ Calendar adjustment is an adjustment for variations caused by calendar effects, different number of calendar and working days in the months, national holidays and outliers (for example, the presence of more non-working days in May could contribute to the decline in production in some activities).

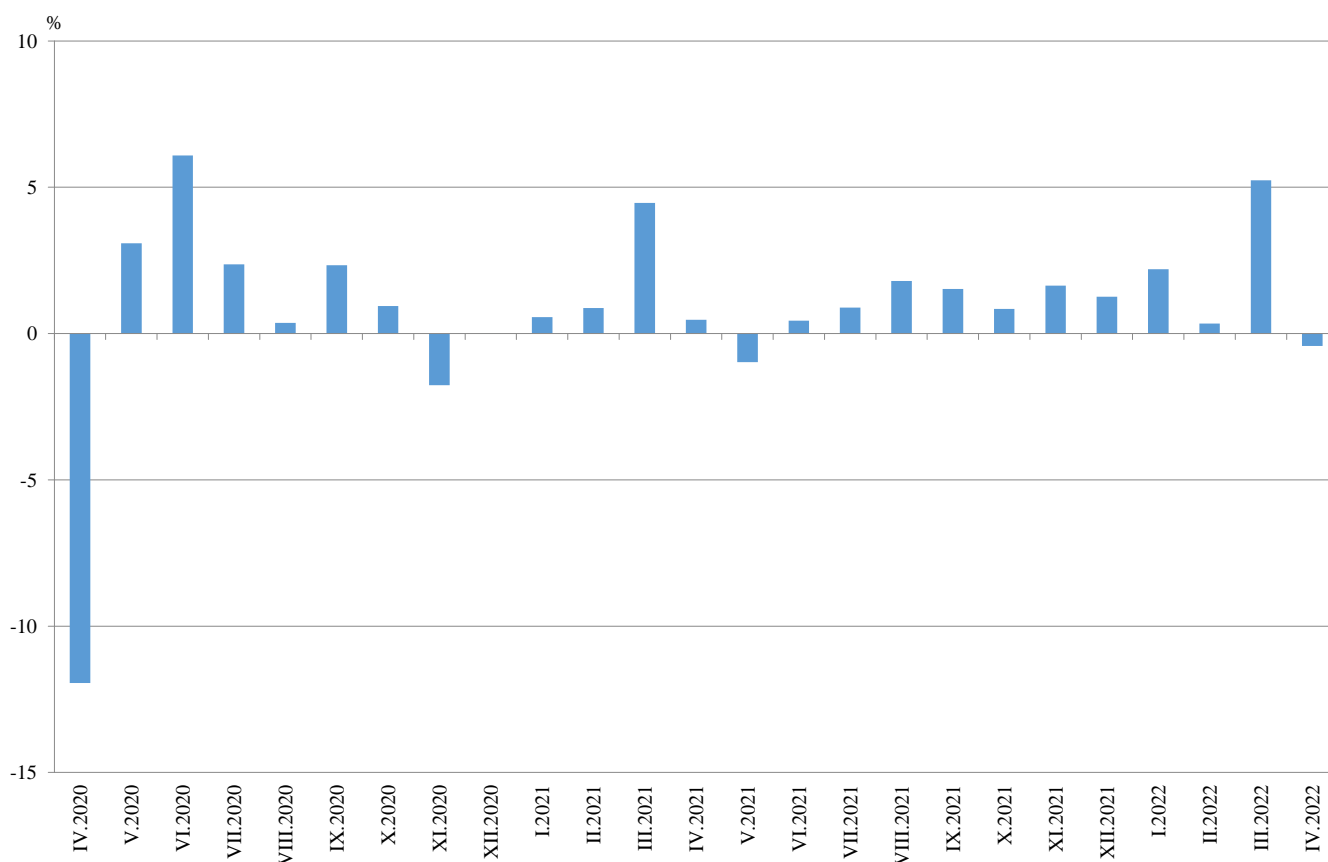
Monthly changes

In April 2022, compared to March 2022, the seasonally adjusted Industrial Production Index decreased in the electricity, gas, steam and air conditioning supply - by 19.9%, in the mining and quarrying industry - by 16.3% and increased in the manufacturing - by 3.3%.

A major growth in the manufacturing was seen in the manufacture of fabricated metal products, except machinery and equipment - by 45.4%, in the manufacture of computer, electronic and optical products - by 14.0%, in the manufacture of tobacco products - by 11.0% and in the manufacture of basic pharmaceutical products and pharmaceutical preparations - by 10.4%.

The most significant decrease was registered in the repair and installation of machinery and equipment - by 12.3%, in the manufacture of motor vehicles, trailers and semi-trailers - by 11.5% and in the manufacture of chemicals and chemical products - by 10.5%.

Figure 2. Changes of Industrial Production Indices compared to the previous month (Seasonally adjusted)



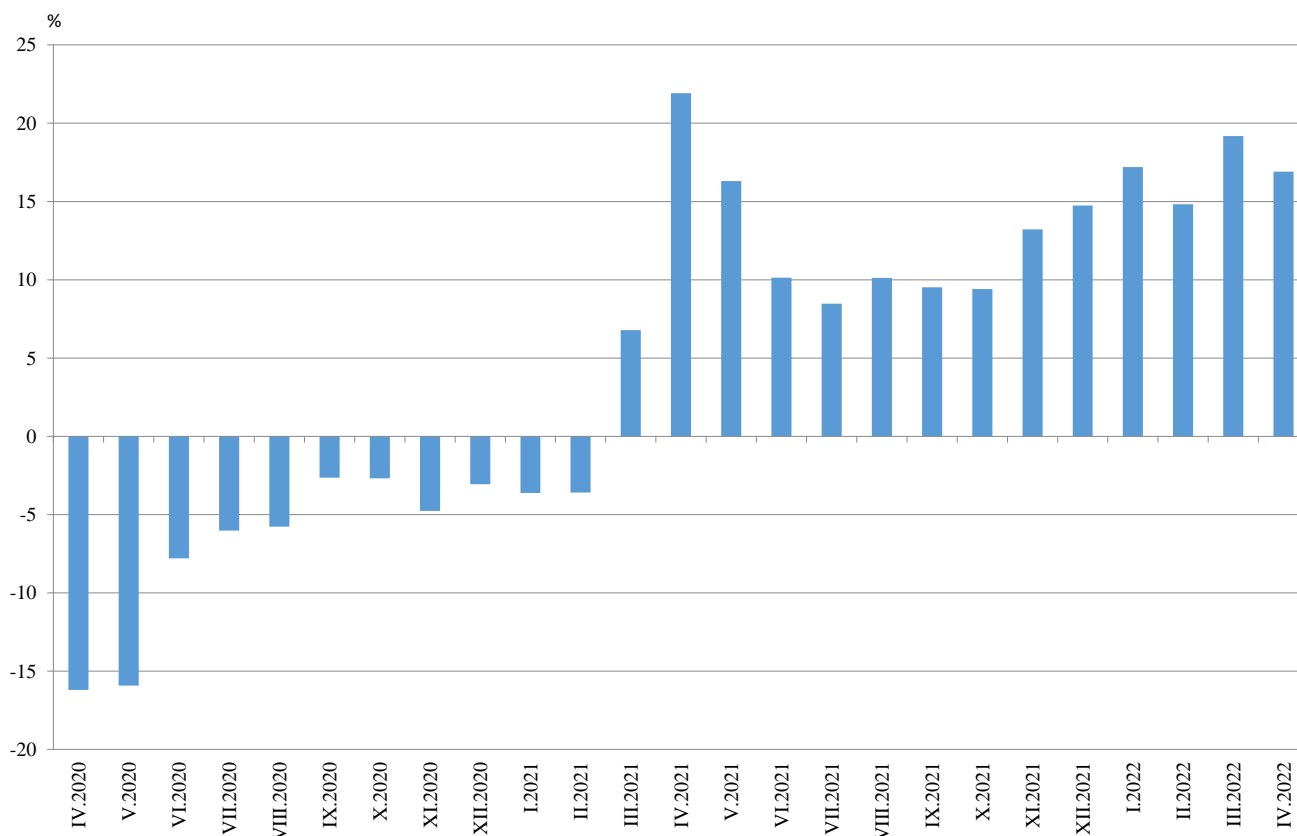
Annual changes

On an annual basis in April 2022, the Industrial Production Index calculated from calendar adjusted data rose in the electricity, gas, steam and air conditioning supply - by 19.8%, in the manufacturing - by 17.8% and in the mining and quarrying industry - by 7.0%.

The most significant growth in the manufacturing compared to the same month of the previous year was registered in the other manufacturing - by 57.2%, in the manufacture of computer, electronic and optical products - by 43.1%, in the manufacture of beverages - by 42.3% and in the manufacture of fabricated metal products, except machinery and equipment - by 41.9%.

A decrease was seen in the manufacture of other transport equipment - by 3.5%, in the manufacture of basic metals - by 2.5%, in the manufacture of rubber and plastic products - by 1.9% and in the manufacture of leather and related products - by 0.6%.

Figure 3. Changes of Industrial Production Indices compared to the same month of the previous year (Calendar adjusted)



Annex

Table 1

Changes of Industrial Production Indices compared to the previous month¹

(Per cent)

Economic activities	NACE.BG - 2008	2021		2022			
		XI	XII	I	II	III	IV*
Industry	B_TO_E36	1.6	1.3	2.2	0.3	5.2	-0.4
Mining and quarrying	B	8.6	-0.7	10.0	-4.7	9.6	-16.3
Mining of coal and lignite	B05	0.9	-2.7	15.6	2.0	12.9	-19.4
Extraction of crude petroleum and natural gas	B06
Mining of metal ores	B07	23.5	0.6	-5.8	-7.3	9.9	-20.5
Other mining and quarrying	B08	4.6	3.3	8.3	-3.2	5.5	-6.1
Mining support service activities	B09
Manufacturing	C	1.1	2.2	3.3	0.3	2.3	3.3
Manufacture of food products	C10	0.5	0.6	6.0	0.5	3.7	0.7
Manufacture of beverages	C11	4.8	-7.8	58.1	-10.6	4.0	3.5
Manufacture of tobacco products	C12	5.7	-21.0	34.8	-13.8	14.3	11.0
Manufacture of textiles	C13	-8.7	12.1	-5.9	-4.1	0.5	0.8
Manufacture of wearing apparel	C14	2.6	2.2	2.8	-1.5	7.5	3.5
Manufacture of leather and related products	C15	3.1	1.0	4.4	-2.0	-4.8	4.5
Manufacture of wood and of products of wood and cork, except furniture; manufacture of articles of straw and plaiting materials	C16	0.2	11.7	7.8	1.3	12.4	-1.2
Manufacture of paper and paper products	C17	-2.5	3.8	-3.3	-0.7	4.5	-1.1
Printing and reproduction of recorded media	C18	2.2	-3.6	0.7	-7.4	5.4	2.3
Manufacture of coke and refined petroleum products	C19
Manufacture of chemicals and chemical products	C20	4.3	3.9	9.9	-4.4	-1.9	-10.5
Manufacture of basic pharmaceutical products and pharmaceutical preparations	C21	0.7	0.2	-0.6	-7.0	0.0	10.4
Manufacture of rubber and plastic products	C22	-1.2	4.8	5.5	-3.3	0.1	0.1
Manufacture of other non-metallic mineral products	C23	4.7	-8.1	13.3	1.1	-2.2	0.3
Manufacture of basic metals	C24	-0.1	5.8	2.7	2.1	0.3	-1.7
Manufacture of fabricated metal products, except machinery and equipment	C25	0.4	1.0	8.9	-6.4	5.6	45.4
Manufacture of computer, electronic and optical products	C26	-3.6	-23.6	24.0	-6.0	4.8	14.0
Manufacture of electrical equipment	C27	1.5	2.6	1.8	0.8	1.8	4.4
Manufacture of machinery and equipment n.e.c.	C28	0.4	0.3	6.0	-0.2	2.5	-0.5
Manufacture of motor vehicles, trailers and semi-trailers	C29	18.8	25.1	-11.8	9.3	3.3	-11.5
Manufacture of other transport equipment	C30	-3.3	17.2	-19.6	16.4	-12.6	8.4
Manufacture of furniture	C31	-1.8	-4.0	14.2	-1.5	-0.5	-3.5
Other manufacturing	C32	32.8	14.3	-10.9	3.4	15.2	1.3
Repair and installation of machinery and equipment	C33	-18.5	24.9	-4.1	4.1	11.8	-12.3
Electricity, gas, steam and air conditioning supply	D	-2.9	-4.0	-4.2	2.1	24.2	-19.9
Electricity, gas, steam and air conditioning supply	D35	1.6	1.3	2.2	0.3	5.2	-0.4

¹ Seasonally adjusted.

* Preliminary data.

‘..’ - Confidential data.



Table 2

Changes of Industrial Production Indices compared to the same month of the previous year¹

(Per cent)

Economic activities	NACE.BG - 2008	2021		2022			
		XI	XII	I	II	III	IV*
Industry	B_TO_E36	13.2	14.7	17.2	14.8	19.2	16.9
Mining and quarrying	B	41.6	22.9	53.5	17.4	23.0	7.0
Mining of coal and lignite	B05	98.8	76.4	128.0	108.7	81.7	52.3
Extraction of crude petroleum and natural gas	B06
Mining of metal ores	B07	39.0	5.6	33.4	-15.7	-0.9	-14.3
Other mining and quarrying	B08	9.2	1.3	10.8	10.8	7.8	2.9
Mining support service activities	B09
Manufacturing	C	5.7	9.5	12.1	12.1	13.1	17.8
Manufacture of food products	C10	8.4	11.1	9.5	12.4	15.3	11.5
Manufacture of beverages	C11	-25.0	-17.2	38.6	30.8	40.1	42.3
Manufacture of tobacco products	C12	-2.2	-33.9	27.1	-15.9	-1.4	2.0
Manufacture of textiles	C13	16.8	28.1	9.0	1.4	10.1	5.8
Manufacture of wearing apparel	C14	12.4	16.9	13.3	8.0	22.1	26.2
Manufacture of leather and related products	C15	2.0	15.9	23.3	16.9	-1.8	-0.6
Manufacture of wood and of products of wood and cork, except furniture; manufacture of articles of straw and plaiting materials	C16	-1.1	13.0	16.8	30.8	36.1	28.0
Manufacture of paper and paper products	C17	6.3	19.6	7.7	6.6	8.3	9.6
Printing and reproduction of recorded media	C18	22.6	17.2	9.7	-1.0	-0.3	5.7
Manufacture of coke and refined petroleum products	C19
Manufacture of chemicals and chemical products	C20	20.1	26.1	38.8	25.0	23.6	25.3
Manufacture of basic pharmaceutical products and pharmaceutical preparations	C21	5.9	1.7	7.8	2.9	-9.6	16.3
Manufacture of rubber and plastic products	C22	-4.3	-2.0	5.0	-1.4	1.9	-1.9
Manufacture of other non-metallic mineral products	C23	11.8	7.6	18.2	19.8	14.0	18.2
Manufacture of basic metals	C24	-4.2	-6.2	4.7	8.0	3.4	-2.5
Manufacture of fabricated metal products, except machinery and equipment	C25	-2.8	0.0	-4.9	-2.1	2.6	41.9
Manufacture of computer, electronic and optical products	C26	50.4	16.2	28.9	26.1	23.0	43.1
Manufacture of electrical equipment	C27	8.1	6.3	3.8	8.5	6.0	5.3
Manufacture of machinery and equipment n.e.c.	C28	16.4	10.7	19.8	21.3	18.0	18.8
Manufacture of motor vehicles, trailers and semi-trailers	C29	-26.8	-9.7	-10.6	1.0	3.7	0.0
Manufacture of other transport equipment	C30	8.3	64.9	-0.1	24.7	-6.4	-3.5
Manufacture of furniture	C31	4.0	-1.3	7.6	8.9	10.4	5.6
Other manufacturing	C32	65.5	111.8	82.0	59.9	93.8	57.2
Repair and installation of machinery and equipment	C33	-17.7	31.3	12.6	9.2	15.6	6.7
Electricity, gas, steam and air conditioning supply	D	47.3	36.8	28.9	28.5	53.0	19.8
Electricity, gas, steam and air conditioning supply	D35	47.3	36.8	28.9	28.5	53.0	19.8

¹ Calendar adjusted.

* Preliminary data.

‘..’ - Confidential data.

Table 3

Industrial Production Indices
(Seasonally adjusted, 2015 = 100)

NACE.BG - 2008	2021									2022			
	IV	V	VI	VII	VIII	IX	X	XI	XII	I	II	III	IV*
B_TO_E36	109.0	107.9	108.4	109.3	111.3	113.0	114.0	115.8	117.3	119.9	120.3	126.6	126.0
B	109.8	113.4	117.7	106.4	124.6	123.8	114.3	124.1	123.3	135.6	129.2	141.6	118.5
B05	84.9	78.6	84.8	74.3	97.5	109.1	114.6	115.6	112.5	130.0	132.6	149.6	120.6
B06
B07	120.5	120.7	144.4	119.7	140.2	133.0	108.9	134.6	135.4	127.5	118.2	129.9	103.2
B08	147.0	148.7	142.1	146.5	135.5	146.1	135.6	141.8	146.4	158.5	153.5	161.9	151.9
B09
C	115.9	114.8	115.1	115.2	116.4	117.2	117.0	118.3	121.0	125.0	125.4	128.3	132.5
C10	116.7	114.9	110.6	114.2	111.7	112.1	114.6	115.2	115.9	122.8	123.5	128.2	129.1
C11	66.8	64.6	62.0	66.9	64.4	62.2	64.5	67.6	62.3	98.6	88.2	91.7	94.9
C12	41.7	40.2	49.3	48.9	35.8	42.0	32.2	34.1	26.9	36.3	31.3	35.8	39.7
C13	111.4	105.5	111.2	110.2	125.3	121.8	126.6	115.6	129.7	122.0	117.0	117.5	118.5
C14	72.0	69.5	69.5	69.1	74.0	71.2	73.7	75.7	77.4	79.5	78.3	84.2	87.1
C15	74.1	70.1	69.2	71.9	69.6	70.5	72.0	74.2	75.0	78.2	76.6	73.0	76.3
C16	84.6	89.4	80.8	84.2	90.8	89.2	79.0	79.2	88.5	95.4	96.6	108.5	107.2
C17	98.7	96.5	103.1	106.2	108.4	109.7	107.0	104.3	108.3	104.8	104.1	108.8	107.6
C18	114.8	110.0	117.1	118.4	125.9	116.8	122.2	124.8	120.3	121.2	112.2	118.2	121.0
C19
C20	102.0	111.9	122.2	123.1	120.1	119.2	130.0	135.6	140.9	154.8	147.9	145.1	129.9
C21	111.9	116.8	111.0	118.9	132.0	117.9	123.5	124.4	124.7	123.9	115.3	115.3	127.3
C22	152.3	149.1	150.4	141.0	151.8	142.0	141.3	139.6	146.2	154.2	149.2	149.3	149.5
C23	111.4	120.4	118.0	118.2	123.8	122.2	121.7	127.4	117.1	132.7	134.2	131.2	131.7
C24	118.3	110.8	108.1	94.1	96.0	95.8	105.3	105.3	111.4	114.3	116.8	117.1	115.1
C25	134.6	132.4	120.8	133.6	109.1	122.2	115.7	116.1	117.2	127.7	119.5	126.2	183.5
C26	204.8	215.1	209.9	213.2	224.3	236.5	278.7	268.7	205.4	254.7	239.4	250.8	285.8
C27	158.8	154.2	150.4	147.0	148.9	153.6	145.0	147.1	150.9	153.7	154.9	157.7	164.6
C28	110.8	111.7	121.0	116.4	118.7	116.1	120.8	121.3	121.7	129.1	128.8	132.0	131.3
C29	133.6	114.3	134.5	119.3	144.9	116.0	103.4	122.8	153.7	135.6	148.2	153.0	135.4
C30	233.6	189.4	264.7	258.5	190.2	252.5	227.2	219.6	257.3	206.9	240.8	210.3	228.1
C31	105.2	104.1	106.4	107.3	102.2	108.3	110.0	108.0	103.7	118.4	116.7	116.0	111.9
C32	139.5	116.0	128.4	140.8	150.3	170.2	132.7	176.2	201.3	179.4	185.4	213.6	216.5
C33	107.4	112.0	105.8	101.0	108.1	121.2	115.2	93.9	117.3	112.5	117.2	131.0	114.8
D	81.4	79.2	78.8	87.8	88.9	96.1	105.9	102.8	98.7	94.6	96.5	119.9	96.0
35	81.4	79.2	78.8	87.8	88.9	96.1	105.9	102.8	98.7	94.6	96.5	119.9	96.0

* Preliminary data.

'..' - Confidential data.



Table 4

Industrial Production Indices
(Calendar adjusted, 2015 = 100)

NACE.BG - 2008	2019	2020	2021									2022			
	IV	IV	IV	V	VI	VII	VIII	IX	X	XI	XII	I	II	III	IV*
B_TO_E36	103.1	86.4	105.4	102.4	110.1	112.2	106.6	113.2	119.0	122.8	119.7	116.1	114.6	133.1	123.2
B	89.4	97.2	101.8	106.0	113.8	103.6	122.3	129.3	127.6	134.1	133.6	132.6	123.8	137.9	109.0
B05	57.6	64.5	66.9	61.0	66.2	66.0	94.0	114.8	136.0	129.1	129.1	144.1	135.0	144.4	101.9
B06
B07	116.4	132.2	120.5	120.7	144.4	119.7	140.2	133.0	108.9	134.6	135.4	127.5	118.2	129.9	103.2
B08	98.4	87.7	143.8	152.7	153.1	156.4	143.2	158.6	150.0	159.7	148.5	110.8	120.4	154.3	148.0
B09
C	112.3	90.9	114.3	112.9	120.8	120.9	110.9	118.3	123.9	125.4	117.1	115.1	117.4	133.8	134.7
C10	102.6	94.6	110.5	113.0	113.7	115.7	112.1	117.8	125.9	122.2	120.0	109.9	109.1	129.0	123.2
C11	102.0	76.8	61.3	67.3	73.9	84.2	81.4	69.3	60.3	60.9	62.3	63.2	59.9	80.9	87.2
C12	47.4	44.0	44.8	46.6	60.2	62.7	32.8	44.7	35.2	38.5	26.9	20.6	18.9	35.7	45.7
C13	91.8	82.7	112.3	114.6	121.7	112.4	100.7	118.2	135.8	118.7	115.6	112.1	117.7	127.0	118.8
C14	77.2	61.9	64.5	61.4	72.9	79.7	72.3	69.7	74.5	76.5	74.3	86.5	78.6	86.0	81.4
C15	85.5	59.3	70.7	63.8	72.4	85.7	56.9	67.5	77.1	80.4	69.9	84.0	77.5	73.2	70.3
C16	75.0	57.2	84.0	91.3	85.9	90.5	90.7	94.2	84.7	84.2	84.2	81.0	84.5	107.6	107.6
C17	99.4	89.8	96.8	95.4	105.1	107.2	107.6	109.3	110.0	105.5	105.1	103.7	101.2	112.6	106.1
C18	120.0	79.5	113.1	109.9	120.2	119.2	120.1	112.8	130.8	142.3	122.2	108.3	102.6	118.7	119.5
C19
C20	116.3	111.7	102.0	110.8	127.0	126.7	116.1	117.3	133.1	137.9	138.1	145.5	141.1	158.7	127.7
C21	110.3	130.9	110.2	113.8	113.9	119.2	121.4	112.4	124.6	137.9	130.1	121.4	101.5	127.1	128.1
C22	137.0	115.8	147.5	145.4	156.2	148.1	147.4	144.8	155.4	144.5	128.6	142.6	143.4	156.4	144.7
C23	109.1	86.1	114.4	129.4	127.5	128.8	130.8	131.3	136.1	138.8	103.1	95.1	109.3	128.2	135.2
C24	107.3	102.4	123.3	106.6	104.7	95.7	86.7	86.4	108.8	112.7	107.2	120.6	117.3	127.5	120.2
C25	114.0	98.9	130.9	127.7	128.1	143.8	105.7	125.7	119.9	127.1	128.0	97.2	109.1	126.7	185.7
C26	148.5	137.4	198.0	205.3	216.4	213.6	197.0	226.8	311.5	300.8	207.7	245.8	225.1	260.3	283.4
C27	131.6	108.1	156.8	147.2	157.6	150.8	134.2	158.8	157.6	159.4	133.6	146.2	152.2	165.8	165.1
C28	129.2	81.0	114.2	108.0	129.2	121.2	103.2	115.7	128.0	130.0	115.9	119.6	124.0	139.0	135.7
C29	153.4	37.3	134.3	112.4	139.6	115.2	125.9	114.9	109.1	134.4	138.6	136.0	151.9	165.9	134.4
C30	166.1	182.3	258.3	188.8	287.0	250.0	145.4	224.8	225.6	230.8	217.6	185.8	259.8	237.6	249.3
C31	94.4	64.6	100.3	100.5	111.2	112.8	99.6	111.5	120.1	116.6	100.5	106.8	107.9	118.5	106.0
C32	131.4	71.5	134.7	111.4	143.1	142.7	149.6	181.5	142.5	192.8	182.8	159.9	166.9	217.5	211.6
C33	125.0	97.7	96.5	103.7	109.1	103.7	104.8	127.4	120.4	104.9	156.3	81.0	100.7	134.1	102.9
D	73.1	64.8	71.8	62.8	66.9	81.8	82.4	86.7	99.5	111.4	125.2	117.3	100.9	133.7	86.1
D35	73.1	64.8	71.8	62.8	66.9	81.8	82.4	86.7	99.5	111.4	125.2	117.3	100.9	133.7	86.1

* Preliminary data.

‘..’ - Confidential data.