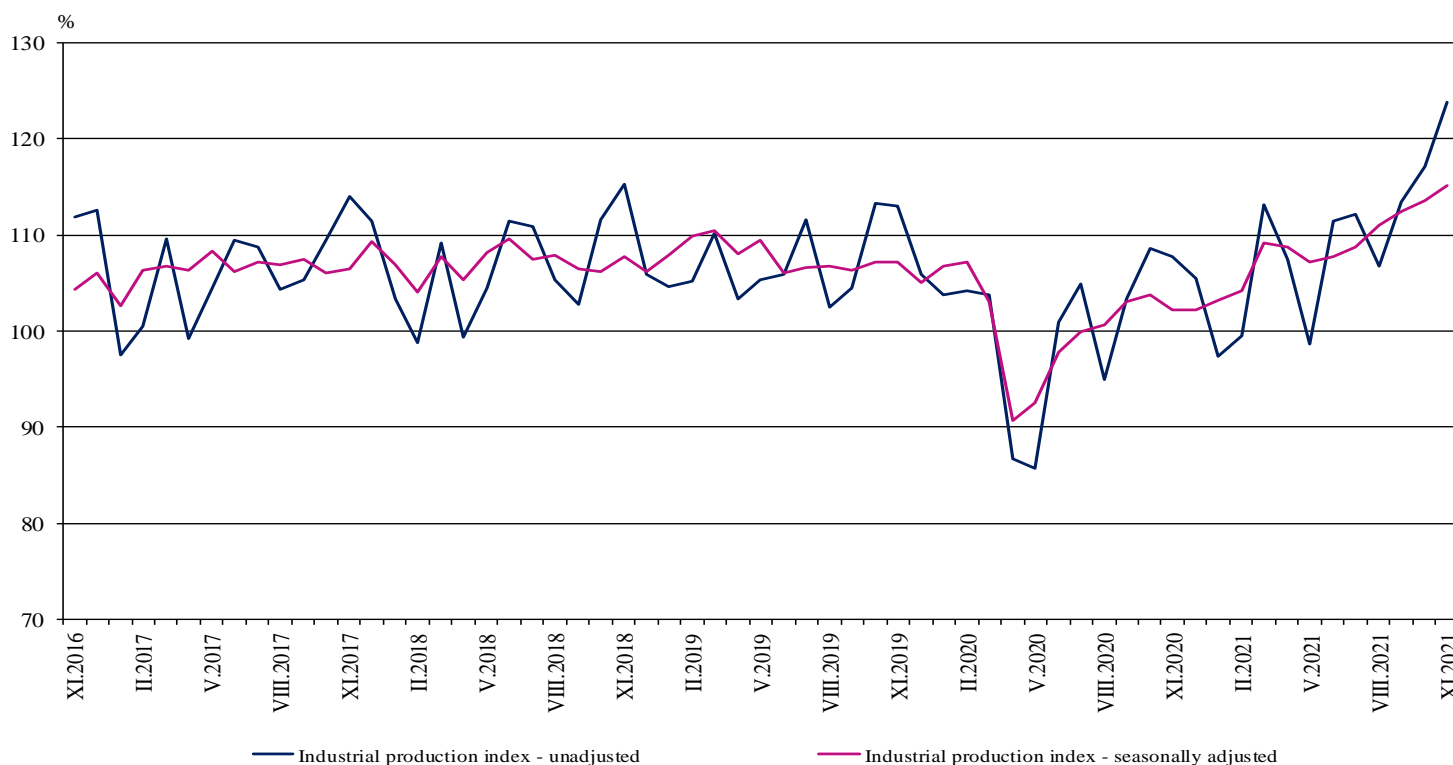


## INDUSTRIAL PRODUCTION INDICES IN NOVEMBER 2021<sup>1</sup>

According to the preliminary data in November 2021 the Industrial Production Index<sup>2</sup>, seasonally adjusted<sup>3</sup>, increased by 1.4% compared to October 2021.

In November 2021, the calendar adjusted<sup>4</sup> Industrial Production Index rose by 13.2% in comparison with the same month of 2020.

**Figure 1. Industrial Production Indices (2015 = 100)**



<sup>1</sup> November 2021 data are preliminary. The final data on Industrial Production and Turnover Indices for October 2021 can be found on the NSI website: <http://www.nsi.bg/en>.

<sup>2</sup> Monthly Industrial Production and Industrial turnover indices measure changes in production and turnover values of industrial enterprises. This information can be used to assess the current economic development and for short-term forecasts. Indices do not measure the actual production level, it aims to measure the average change in the value of production between two points of time. Indices are compiled, based on information collected through a representative sampling survey on industrial enterprises. The sample covers enterprises with an annual turnover of more than 97% of total turnover in the industry.

Industrial production indices are calculated at constant base year that is to say they are weighted with the structure of the value added at factor costs in the base year.

<sup>3</sup> Seasonal adjustment is a statistical method, which eliminates the seasonal component of the time series.

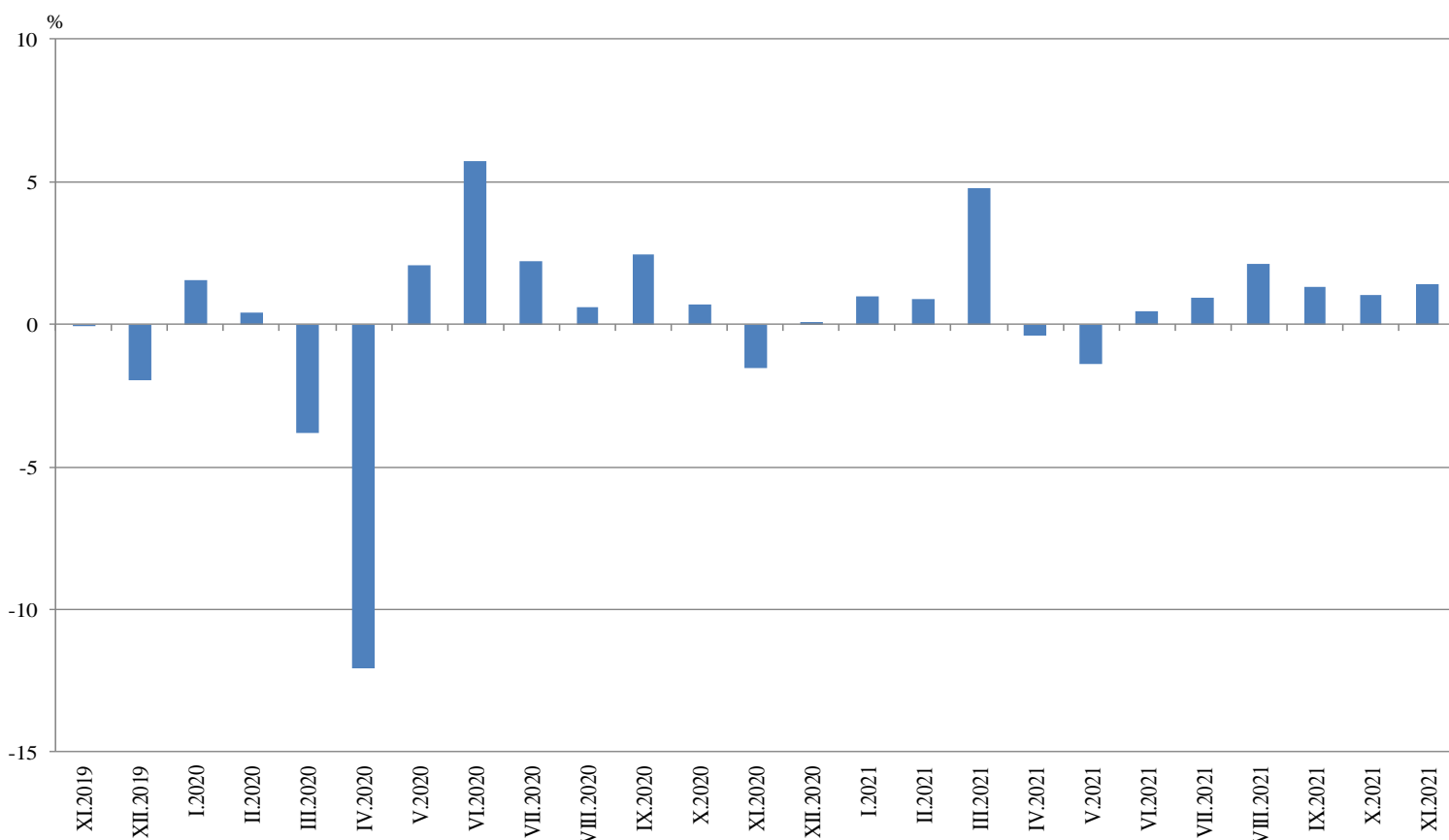
<sup>4</sup> Calendar adjustment is an adjustment for variations caused by calendar effects, different number of calendar and working days in the months, national holidays and outliers (for example the presence of more non-working days in May could contribute to the decline in the production in some activities).

## Monthly changes

In November 2021, compared to October 2021, the seasonally adjusted Industrial Production Index rose in the mining and quarrying industry by 8.2% and in the manufacturing by 0.7% and decrease in the electricity, gas, steam and air conditioning supply by 2.6%.

The most significant increase in the manufacturing was registered in the other manufacturing by 31.1%, in the manufacture of motor vehicles, trailers and semi-trailers by 16.5%, in the manufacture of beverages by 5.2% and in the manufacture of other non-metallic mineral products by 5.0%. Major decrease was seen in the repair and installation of machinery and equipment by 17.4%, in the manufacture of textiles by 9.4%, in the manufacture of computer, electronic and optical products by 3.5% and in the manufacture of other transport equipment by 3.4%.

**Figure 2. Changes of Industrial Production Indices compared to the previous month  
(Seasonally adjusted)**

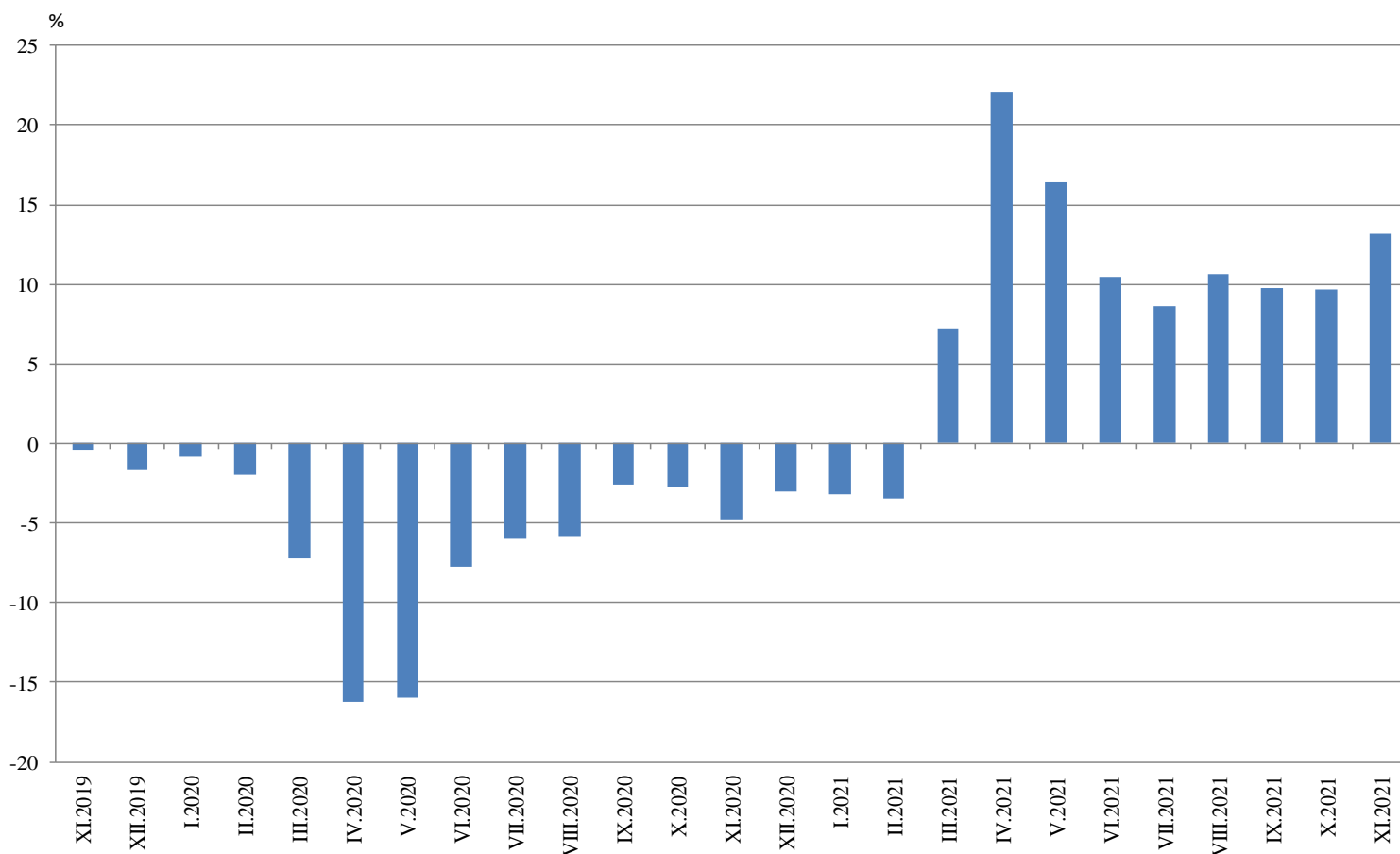


### Annual changes

On annual basis in November 2021 Industrial Production Index calculated from calendar day adjusted data rose in the electricity, gas, steam and air conditioning supply by 48.0%, in the mining and quarrying industry by 42.3% and in the manufacturing by 5.5%.

The most significant growth in the manufacturing compared to the same month of the previous year was reported in the other manufacturing by 62.7%, in the manufacture of computer, electronic and optical products by 50.6%, in the printing and reproduction of recorded media by 22.4% and in the manufacture of textiles by 16.9%. Major decrease was seen in the manufacture of motor vehicles, trailers and semi-trailers by 28.1%, in the manufacture of beverages by 23.6% and in the repair and installation of machinery and equipment by 16.8%.

**Figure 3. Changes of Industrial Production Indices compared to the same month of the previous year (Calendar adjusted)**



Annex

Table 1

Changes of Industrial Production Indices compared to the previous month<sup>1</sup>

(Per cent)

Economic activities	NACE.BG - 2008	2021					
		VI	VII	VIII	IX	X	XI*
<b>Industry</b>	<b>B_TO_E36</b>	<b>0.4</b>	<b>0.9</b>	<b>2.1</b>	<b>1.3</b>	<b>1.0</b>	<b>1.4</b>
<b>Mining and quarrying</b>	<b>B</b>	<b>4.1</b>	<b>-9.9</b>	<b>17.4</b>	<b>-0.7</b>	<b>-7.6</b>	<b>8.2</b>
Mining of coal and lignite	B05	6.9	-12.6	31.8	12.1	5.3	0.8
Extraction of crude petroleum and natural gas	B06	..	..	..	..	..	..
Mining of metal ores	B07	10.6	-11.7	17.2	-5.1	-18.1	23.7
Other mining and quarrying	B08	-4.3	2.5	-7.6	7.7	-3.6	1.5
Mining support service activities	B09	..	..	..	..	..	..
<b>Manufacturing</b>	<b>C</b>	<b>0.1</b>	<b>0.0</b>	<b>1.2</b>	<b>0.3</b>	<b>-0.3</b>	<b>0.7</b>
Manufacture of food products	C10	-3.4	1.5	-1.2	0.4	2.4	1.1
Manufacture of beverages	C11	-4.1	5.2	-2.0	-6.6	2.8	5.2
Manufacture of tobacco products	C12	21.2	-1.5	-25.2	17.1	-14.6	1.4
Manufacture of textiles	C13	4.8	-0.4	14.5	-2.4	3.4	-9.4
Manufacture of wearing apparel	C14	0.3	0.7	6.0	-3.0	3.3	2.4
Manufacture of leather and related products	C15	1.8	2.3	-0.8	-1.3	3.0	2.2
Manufacture of wood and of products of wood and cork, except furniture; manufacture of articles of straw and plaiting materials	C16	-10.4	4.7	7.7	-2.2	-13.5	2.0
Manufacture of paper and paper products	C17	9.6	4.6	2.7	0.1	-3.4	-2.5
Printing and reproduction of recorded media	C18	6.4	0.3	6.0	-5.8	4.6	2.1
Manufacture of coke and refined petroleum products	C19	..	..	..	..	..	..
Manufacture of chemicals and chemical products	C20	6.6	0.7	-2.6	-0.1	8.6	0.4
Manufacture of basic pharmaceutical products and pharmaceutical preparations	C21	-5.7	3.7	9.2	-10.7	8.1	-1.2
Manufacture of rubber and plastic products	C22	0.0	-5.9	7.2	-7.1	-0.5	-1.4
Manufacture of other non-metallic mineral products	C23	-2.2	0.4	4.9	-1.5	-0.2	5.0
Manufacture of basic metals	C24	-3.9	-14.1	1.1	0.4	10.2	-0.2
Manufacture of fabricated metal products, except machinery and equipment	C25	-8.4	11.0	-18.9	11.9	-5.7	-1.3
Manufacture of computer, electronic and optical products	C26	-2.3	1.9	5.7	6.2	19.0	-3.5
Manufacture of electrical equipment	C27	-2.7	-2.5	1.5	2.7	-5.1	3.0
Manufacture of machinery and equipment n.e.c.	C28	8.2	-3.2	1.9	-2.4	3.5	-0.7
Manufacture of motor vehicles, trailers and semi-trailers	C29	9.2	-12.3	19.9	-20.5	-10.0	16.5
Manufacture of other transport equipment	C30	23.9	-4.3	-16.6	32.6	-10.4	-3.4
Manufacture of furniture	C31	2.3	0.4	-3.7	5.0	1.9	-2.5
Other manufacturing	C32	12.2	10.5	5.4	11.4	-20.7	31.1
Repair and installation of machinery and equipment	C33	-5.5	-4.7	7.7	12.2	-6.0	-17.4
<b>Electricity, gas, steam and air conditioning supply</b>	<b>D</b>	<b>0.3</b>	<b>10.4</b>	<b>2.6</b>	<b>9.7</b>	<b>11.0</b>	<b>-2.6</b>
Electricity, gas, steam and air conditioning Supply	D35	0.3	10.4	2.6	9.7	11.0	-2.6

<sup>1</sup> Seasonally adjusted.

\* Preliminary data.

„..“ - Confidential data.

**Table 2**  
**Changes of Industrial Production Indices compared to the same month of the previous year<sup>1</sup>**  
(Per cent)

Economic activities	NACE.BG - 2008	2021					
		VI	VII	VIII	IX	X	XI*
<b>Industry</b>	<b>B_TO_E36</b>	<b>10.5</b>	<b>8.6</b>	<b>10.6</b>	<b>9.7</b>	<b>9.6</b>	<b>13.2</b>
<b>Mining and quarrying</b>	<b>B</b>	<b>7.3</b>	<b>6.2</b>	<b>15.7</b>	<b>20.0</b>	<b>19.2</b>	<b>42.3</b>
Mining of coal and lignite	B05	25.3	16.8	38.7	75.7	81.8	98.8
Extraction of crude petroleum and natural gas	B06	..	..	..	..	..	..
Mining of metal ores	B07	-5.4	-9.2	4.7	-5.7	-16.4	39.2
Other mining and quarrying	B08	37.0	45.8	21.6	35.2	24.7	7.9
Mining support service activities	B09	..	..	..	..	..	..
<b>Manufacturing</b>	<b>C</b>	<b>12.2</b>	<b>7.9</b>	<b>8.8</b>	<b>5.9</b>	<b>3.3</b>	<b>5.5</b>
Manufacture of food products	C10	0.1	5.3	12.4	6.5	7.5	9.2
Manufacture of beverages	C11	-36.8	-30.3	-31.2	-39.3	-35.7	-23.6
Manufacture of tobacco products	C12	58.7	59.1	0.3	37.0	-2.1	-5.9
Manufacture of textiles	C13	16.9	12.9	32.2	27.1	23.2	16.9
Manufacture of wearing apparel	C14	-1.5	-5.7	5.2	0.2	3.8	13.4
Manufacture of leather and related products	C15	-15.8	-3.5	-0.6	-1.1	-5.8	-1.6
Manufacture of wood and of products of wood and cork, except furniture; manufacture of articles of straw and plaiting materials	C16	14.7	18.4	25.5	20.6	2.1	-1.5
Manufacture of paper and paper products	C17	12.7	24.4	27.9	28.7	15.7	5.9
Printing and reproduction of recorded media	C18	26.7	17.1	23.1	12.2	15.8	22.4
Manufacture of coke and refined petroleum products	C19	..	..	..	..	..	..
Manufacture of chemicals and chemical products	C20	5.5	7.2	2.6	7.9	14.1	14.9
Manufacture of basic pharmaceutical products and pharmaceutical preparations	C21	-10.2	-1.5	18.3	-3.9	1.0	-0.7
Manufacture of rubber and plastic products	C22	22.7	1.1	11.8	-1.6	-2.2	-1.8
Manufacture of other non-metallic mineral products	C23	19.1	3.6	15.8	9.1	10.8	11.9
Manufacture of basic metals	C24	-10.8	-16.4	-21.5	-22.1	1.2	-4.0
Manufacture of fabricated metal products, except machinery and equipment	C25	13.1	32.1	4.8	-2.0	-11.0	-4.0
Manufacture of computer, electronic and optical products	C26	46.2	42.1	52.4	58.4	71.1	50.6
Manufacture of electrical equipment	C27	23.0	11.6	13.1	16.1	3.6	11.8
Manufacture of machinery and equipment n.e.c.	C28	42.6	23.3	20.3	8.1	14.5	15.1
Manufacture of motor vehicles, trailers and semi-trailers	C29	28.0	-8.6	-2.3	-26.1	-42.9	-28.1
Manufacture of other transport equipment	C30	70.3	62.2	-11.6	40.5	13.9	8.0
Manufacture of furniture	C31	3.9	3.2	-4.8	1.4	1.7	3.4
Other manufacturing	C32	52.3	34.0	43.7	49.2	17.4	62.7
Repair and installation of machinery and equipment	C33	0.4	-17.5	12.9	30.1	14.1	-16.8
<b>Electricity, gas, steam and air conditioning supply</b>	<b>D</b>	<b>2.9</b>	<b>17.6</b>	<b>19.6</b>	<b>29.6</b>	<b>52.6</b>	<b>48.0</b>
Electricity, gas, steam and air conditioning supply	D35	2.9	17.6	19.6	29.6	52.6	48.0

<sup>1</sup> Calendar adjusted.

\* Preliminary data.

„..“ - Confidential data.

Table 3

**Industrial Production Indices**  
(Seasonally adjusted, 2015 = 100)

NACE.BG - 2008	2020		2021										
	XI	XII	I	II	III	IV	V	VI	VII	VIII	IX	X	XI*
<b>B_TO_E36</b>	<b>102.2</b>	<b>102.3</b>	<b>103.3</b>	<b>104.2</b>	<b>109.2</b>	<b>108.8</b>	<b>107.3</b>	<b>107.7</b>	<b>108.7</b>	<b>111.0</b>	<b>112.5</b>	<b>113.6</b>	<b>115.2</b>
<b>B</b>	<b>87.8</b>	<b>100.1</b>	<b>87.1</b>	<b>110.7</b>	<b>116.1</b>	<b>109.2</b>	<b>112.8</b>	<b>117.5</b>	<b>105.8</b>	<b>124.2</b>	<b>123.4</b>	<b>114.0</b>	<b>123.3</b>
<b>B05</b>	51.9	55.6	49.3	62.7	87.0	84.6	78.6	84.0	73.4	96.8	108.5	114.3	115.2
<b>B06</b>	..	..	..	..	..	..	..	..	..	..	..	..	..
<b>B07</b>	96.8	128.2	95.5	145.5	132.0	120.5	122.5	135.5	119.7	140.2	133.0	108.9	134.7
<b>B08</b>	128.5	143.4	144.8	139.8	146.3	147.5	148.8	142.4	146.0	134.9	145.3	140.0	142.2
<b>B09</b>	..	..	..	..	..	..	..	..	..	..	..	..	..
<b>C</b>	<b>111.1</b>	<b>110.8</b>	<b>113.2</b>	<b>112.5</b>	<b>117.6</b>	<b>116.4</b>	<b>114.9</b>	<b>115.0</b>	<b>115.0</b>	<b>116.4</b>	<b>116.8</b>	<b>116.5</b>	<b>117.3</b>
<b>C10</b>	105.9	103.9	113.2	110.5	112.6	117.1	114.7	110.8	112.5	111.2	111.6	114.2	115.5
<b>C11</b>	90.2	81.2	75.9	68.8	67.5	68.5	65.2	62.5	65.7	64.4	60.2	61.9	65.1
<b>C12</b>	34.1	37.3	29.2	33.5	36.1	38.1	41.1	49.9	49.1	36.7	43.0	36.7	37.3
<b>C13</b>	97.3	102.8	110.9	113.9	106.1	111.0	105.3	110.3	109.9	125.9	122.8	127.0	115.1
<b>C14</b>	67.7	66.8	71.8	72.2	73.8	71.3	69.0	69.3	69.7	73.9	71.7	74.0	75.8
<b>C15</b>	72.2	70.2	67.9	68.6	74.1	76.3	66.4	67.5	69.1	68.5	67.7	69.7	71.2
<b>C16</b>	78.6	78.4	83.0	81.1	89.0	84.9	90.0	80.7	84.4	91.0	88.9	76.9	78.4
<b>C17</b>	96.9	92.1	95.9	95.7	98.5	97.2	93.7	102.7	107.4	110.3	110.4	106.6	104.0
<b>C18</b>	100.9	99.6	108.0	110.9	117.7	114.7	109.4	116.4	116.8	123.7	116.6	122.0	124.5
<b>C19</b>	..	..	..	..	..	..	..	..	..	..	..	..	..
<b>C20</b>	113.3	112.7	113.3	119.0	117.7	101.2	114.1	121.7	122.5	119.3	119.1	129.3	129.9
<b>C21</b>	119.6	122.9	117.9	110.8	123.9	110.5	116.7	110.0	114.1	124.6	111.3	120.4	118.9
<b>C22</b>	141.8	148.5	152.9	155.1	151.6	157.1	154.5	154.5	145.3	155.7	144.7	143.9	141.9
<b>C23</b>	114.7	107.8	113.2	112.8	115.0	111.6	120.3	117.6	118.0	123.8	121.9	121.7	127.8
<b>C24</b>	111.0	115.1	114.6	113.7	116.5	118.7	112.7	108.3	93.0	94.1	94.5	104.1	103.9
<b>C25</b>	118.5	117.1	135.6	122.1	123.0	135.7	133.7	122.4	135.9	110.2	123.3	116.3	114.8
<b>C26</b>	183.7	166.3	198.0	186.6	200.2	201.5	211.9	207.1	211.1	223.0	236.8	281.7	272.0
<b>C27</b>	133.5	141.2	144.8	141.4	150.5	161.0	155.9	151.8	148.0	150.3	154.4	146.5	150.9
<b>C28</b>	103.6	108.9	108.6	106.8	112.6	110.3	111.6	120.7	116.9	119.1	116.2	120.3	119.5
<b>C29</b>	167.6	182.1	162.9	155.2	153.7	134.4	123.5	134.9	118.3	141.8	112.8	101.5	118.2
<b>C30</b>	195.5	161.0	186.7	192.2	216.9	226.5	193.4	239.7	229.4	191.2	253.6	227.2	219.5
<b>C31</b>	104.7	104.4	114.5	108.7	106.1	104.6	103.7	106.1	106.5	102.6	107.7	109.7	107.0
<b>C32</b>	107.5	96.8	98.8	115.1	111.6	138.0	113.1	126.9	140.3	147.9	164.8	130.6	171.3
<b>C33</b>	111.1	90.3	99.8	106.6	114.0	107.1	111.9	105.7	100.7	108.5	121.6	114.3	94.4
<b>D</b>	<b>72.3</b>	<b>73.1</b>	<b>73.8</b>	<b>72.5</b>	<b>77.3</b>	<b>78.6</b>	<b>76.6</b>	<b>76.8</b>	<b>84.8</b>	<b>87.0</b>	<b>95.5</b>	<b>105.9</b>	<b>103.2</b>
<b>35</b>	72.3	73.1	73.8	72.5	77.3	78.6	76.6	76.8	84.8	87.0	95.5	105.9	103.2

\* Preliminary data.

...“ - Confidential data.

Table 4

**Industrial Production Indices  
(Calendar adjusted, 2015 = 100)**

NACE.BG - 2008	2018	2019	2020		2021										
	XI	XI	XI	XII	I	II	III	IV	V	VI	VII	VIII	IX	X	XI*
<b>B_TO_E36</b>	<b>114.3</b>	<b>113.9</b>	<b>108.4</b>	<b>104.3</b>	<b>99.6</b>	<b>100.2</b>	<b>112.1</b>	<b>105.5</b>	<b>102.4</b>	<b>110.4</b>	<b>112.4</b>	<b>107.0</b>	<b>113.4</b>	<b>119.3</b>	<b>122.8</b>
<b>B</b>	<b>109.4</b>	<b>111.5</b>	<b>94.1</b>	<b>109.9</b>	<b>84.6</b>	<b>105.5</b>	<b>112.1</b>	<b>101.9</b>	<b>105.7</b>	<b>113.9</b>	<b>103.6</b>	<b>122.3</b>	<b>129.3</b>	<b>127.7</b>	<b>133.9</b>
<b>B05</b>	99.6	85.0	64.9	73.2	63.2	64.7	79.5	66.9	61.0	66.2	66.0	94.0	114.8	136.0	129.1
<b>B06</b>	..	..	..	..	..	..	..	..	..	..	..	..	..	..	..
<b>B07</b>	121.3	134.4	96.8	128.2	95.5	140.2	131.0	120.5	120.6	144.4	119.7	140.2	133.0	108.9	134.7
<b>B08</b>	107.2	119.6	146.2	146.6	100.0	108.6	143.2	143.8	152.6	153.1	156.4	143.2	158.6	150.0	157.7
<b>B09</b>	..	..	..	..	..	..	..	..	..	..	..	..	..	..	..
<b>C</b>	<b>121.3</b>	<b>123.2</b>	<b>118.6</b>	<b>107.0</b>	<b>102.8</b>	<b>105.2</b>	<b>118.9</b>	<b>114.7</b>	<b>113.2</b>	<b>121.3</b>	<b>121.1</b>	<b>111.4</b>	<b>118.5</b>	<b>124.2</b>	<b>125.2</b>
<b>C10</b>	108.0	116.8	112.7	108.0	100.1	97.2	112.1	110.9	112.9	114.0	113.7	112.3	117.9	125.7	123.1
<b>C11</b>	97.1	92.1	81.1	75.2	45.3	46.2	58.3	61.4	68.0	75.2	84.9	85.0	69.9	60.2	62.0
<b>C12</b>	65.9	56.0	39.3	40.7	17.7	22.5	36.2	44.8	46.6	60.2	63.1	32.8	44.7	35.7	37.0
<b>C13</b>	102.3	104.0	101.7	90.2	101.5	116.7	116.0	113.2	115.7	122.3	112.6	101.3	118.8	137.1	118.8
<b>C14</b>	91.2	83.4	68.2	63.4	76.1	72.9	71.4	65.5	62.3	73.9	81.1	72.9	70.6	75.4	77.3
<b>C15</b>	97.1	111.2	81.6	61.9	66.8	66.4	76.0	71.9	61.9	73.0	85.4	57.2	67.5	77.2	80.3
<b>C16</b>	81.9	85.0	85.2	74.5	69.0	71.5	87.7	83.8	91.5	85.8	90.5	90.7	94.1	82.7	83.9
<b>C17</b>	101.3	96.3	99.2	88.0	96.2	94.8	103.2	96.7	94.9	104.9	108.4	109.1	109.1	109.7	105.1
<b>C18</b>	116.1	140.7	115.9	104.4	98.2	103.8	118.8	113.3	109.9	120.2	117.4	117.9	112.8	130.5	141.9
<b>C19</b>	..	..	..	..	..	..	..	..	..	..	..	..	..	..	..
<b>C20</b>	106.8	113.9	114.8	109.9	105.1	112.4	128.4	101.5	113.8	126.5	126.4	115.7	118.1	132.7	132.0
<b>C21</b>	130.1	134.5	131.1	126.6	114.5	98.6	139.4	108.7	116.6	113.1	112.6	114.8	105.6	121.7	130.1
<b>C22</b>	144.9	149.5	151.1	131.3	138.7	149.1	157.7	150.5	148.9	160.0	151.1	151.0	147.9	159.7	148.4
<b>C23</b>	121.0	122.9	124.2	95.8	80.5	91.1	112.3	114.9	129.4	127.4	128.8	130.9	131.2	136.1	139.0
<b>C24</b>	119.9	121.0	117.6	114.2	115.2	108.8	123.5	123.4	106.8	104.9	95.6	86.9	86.5	109.0	112.9
<b>C25</b>	139.5	127.4	130.8	128.0	103.0	112.3	124.6	131.3	128.5	129.2	146.2	106.5	126.6	120.6	125.5
<b>C26</b>	149.0	168.5	200.1	178.5	190.1	178.6	211.4	196.4	204.7	216.1	213.7	197.0	226.7	311.7	301.2
<b>C27</b>	137.5	141.6	147.4	125.8	138.0	139.9	157.3	157.6	147.8	158.5	151.5	134.8	159.6	159.5	164.8
<b>C28</b>	134.1	124.4	111.7	104.7	100.1	102.6	117.8	114.4	108.1	129.3	122.3	104.3	116.6	128.1	128.6
<b>C29</b>	159.4	156.1	183.6	153.5	159.1	150.9	159.9	134.3	113.8	139.6	115.6	125.8	113.6	109.1	132.0
<b>C30</b>	165.9	190.8	213.1	132.0	185.9	208.0	253.3	253.7	186.8	286.3	249.5	144.9	224.3	225.2	230.1
<b>C31</b>	117.9	112.4	112.1	101.8	99.2	98.7	106.9	99.7	100.2	110.6	112.4	100.8	111.0	120.1	115.9
<b>C32</b>	150.2	199.7	116.4	86.3	87.8	104.4	112.2	134.5	110.2	143.1	141.4	153.3	180.8	142.5	189.4
<b>C33</b>	138.1	128.1	127.4	119.0	72.5	92.2	115.4	96.0	103.2	109.1	103.7	104.7	127.4	119.7	105.9
<b>D</b>	<b>90.3</b>	<b>80.1</b>	<b>75.6</b>	<b>91.5</b>	<b>93.2</b>	<b>78.6</b>	<b>87.5</b>	<b>71.1</b>	<b>62.0</b>	<b>66.9</b>	<b>82.1</b>	<b>82.5</b>	<b>86.8</b>	<b>99.6</b>	<b>111.8</b>
<b>D35</b>	90.3	80.1	75.6	91.5	93.2	78.6	87.5	71.1	62.0	66.9	82.1	82.5	86.8	99.6	111.8

\* Preliminary data.

„..“ - Confidential data.