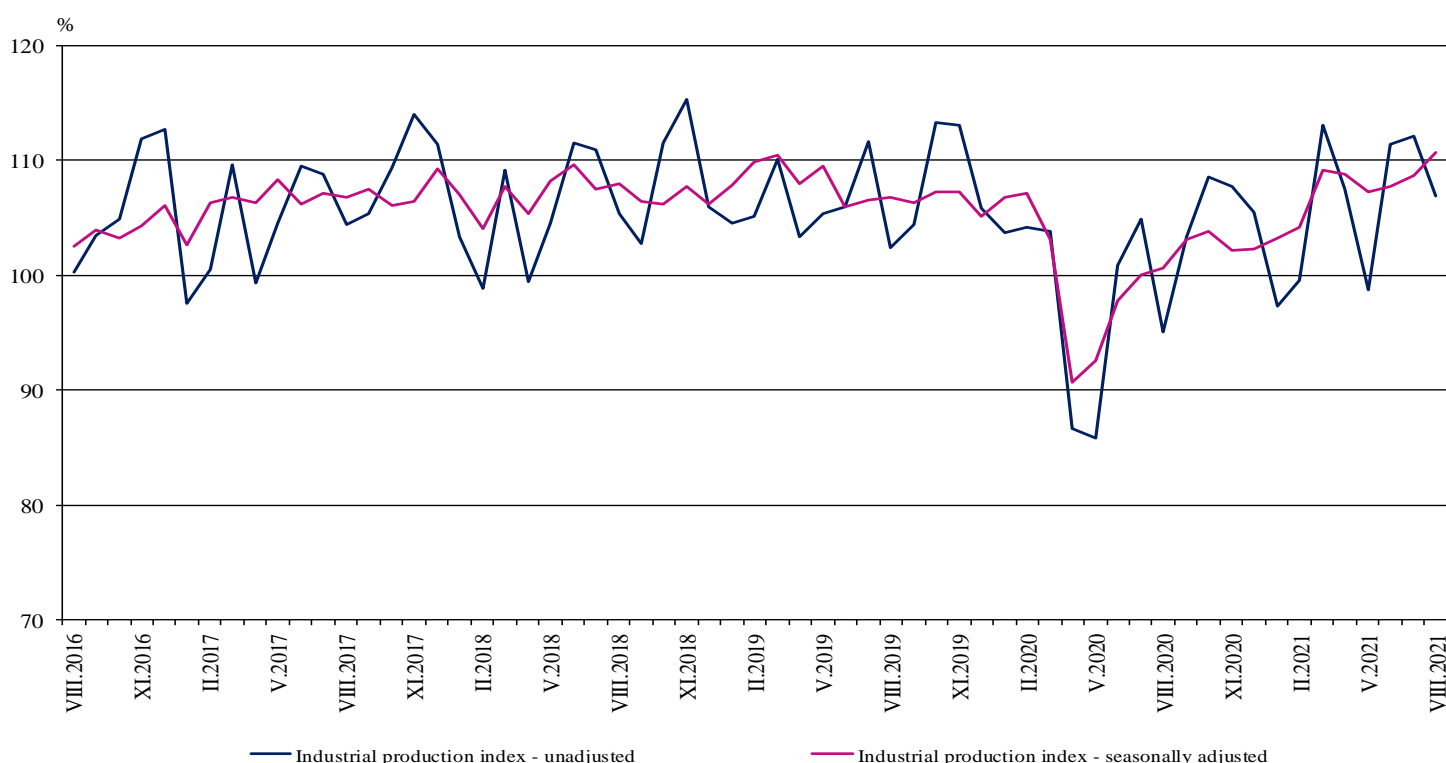


INDUSTRIAL PRODUCTION INDICES IN AUGUST 2021¹

According to the preliminary data in August 2021 the Industrial Production Index², seasonally adjusted³, increased by 1.8 % compared to July 2021.

In August 2021, the calendar adjusted⁴ Industrial Production Index rose by 10.8% in comparison with the same month of 2020.

Figure 1. Industrial Production Indices (2015 = 100)



¹ August 2021 data are preliminary. The final data on Industrial Production and Turnover Indices for July 2021 can be found on the NSI website: <http://www.nsi.bg/en>.

² Monthly Industrial Production and Industrial turnover indices measure changes in production and turnover values of industrial enterprises. This information can be used to assess the current economic development and for short-term forecasts. Indices do not measure the actual production level, it aims to measure the average change in the value of production between two points of time. Indices are compiled on the base of information collected through a representative sampling survey on industrial enterprises. The sample covers enterprises with an annual turnover of more than 97% of total turnover in the industry.

Industrial production indices are calculated at a constant base year, that is to say they are weighted with the structure of the value added at factor costs in the base year.

³ Seasonal adjustment is a statistical method, which eliminates the seasonal component of time series.

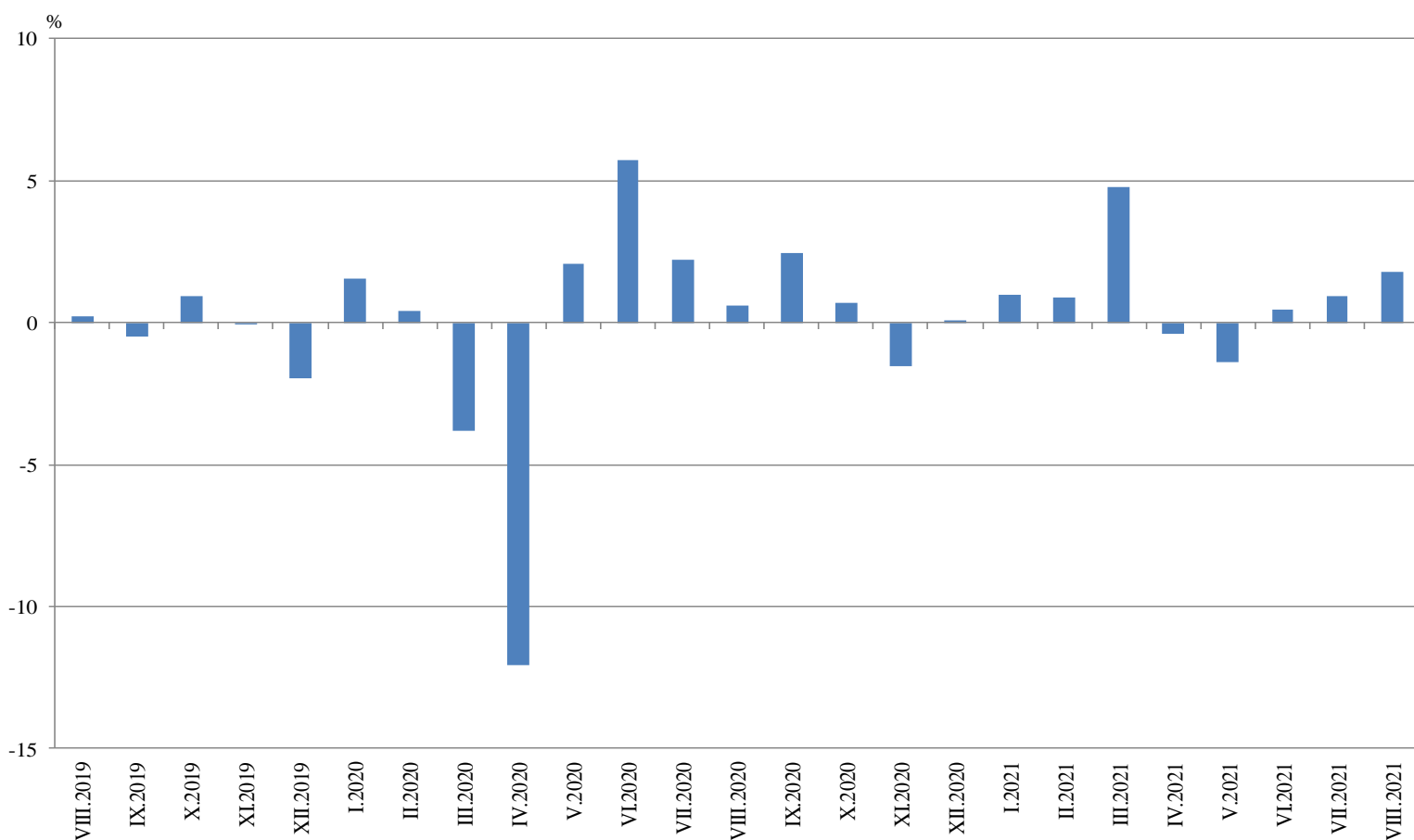
⁴ Calendar adjustment is an adjustment for variations caused by calendar effects, different number of calendar and working days in the months, national holidays and outliers (for example the presence of more non-working days in May could contribute to the decline in the production in some activities).

Monthly changes

In August 2021, compared to July 2021, the seasonally adjusted Industrial Production Index rose in the mining and quarrying industry by 17.6%, in manufacturing by 1.1%, and in the electricity, gas, steam and air conditioning supply by 1.0%.

The most significant increase in the manufacturing was seen in the manufacture of motor vehicles, trailers and semi-trailers by 21.8%, in the manufacture of textiles by 12.0%, in the manufacture of basic pharmaceutical products and pharmaceutical preparations by 10.0%. Major decrease was seen in the manufacture of tobacco products by 23.6%, in the manufacture of fabricated metal products, except machinery and equipment by 20.0%, in the manufacture of other transport equipment by 8.9%.

**Figure 2. Changes of Industrial Production Indices compared to the previous month
(Seasonally adjusted)**

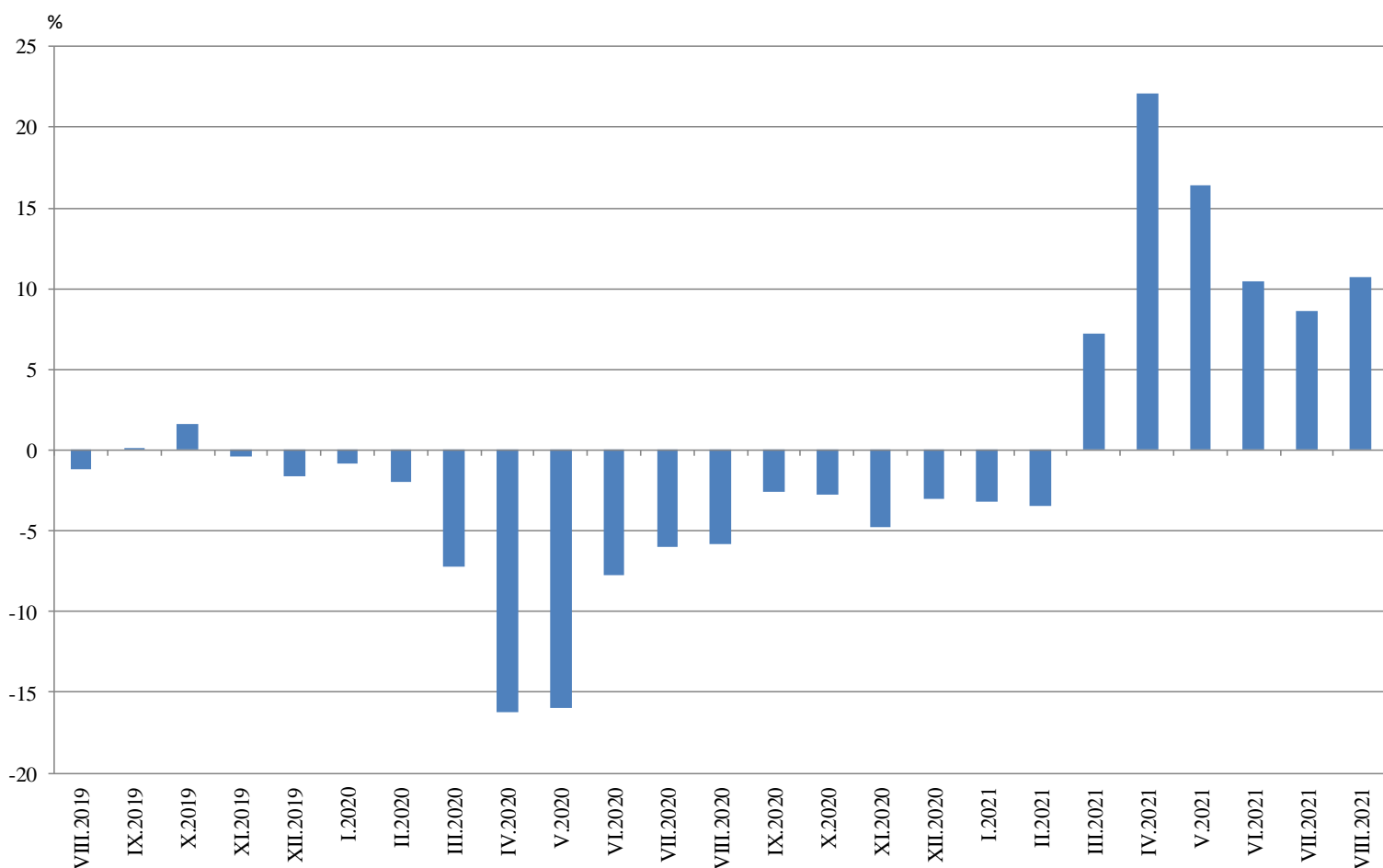


Annual changes

On annual basis in August 2021 Industrial Production Index calculated from calendar adjusted data rose in the electricity, gas, steam and air conditioning supply by 19.9%, in the mining and quarrying industry by 15.8% and in the manufacturing by 8.9%.

In the manufacturing, more considerable increase compared to the same month of the previous year was registered in the manufacture of computer, electronic and optical products by 52.4%, in other manufacturing by 43.5%, in the manufacture of textiles by 29.0%. Major decrease was seen in the manufacture of beverages by 31.7%, in the manufacture of basic metals by 21.6% and in the manufacture of other transport equipment by 11.6%.

Figure 3. Changes of Industrial Production Indices compared to the same month of the previous year (Calendar adjusted)



Annex

Table 1

Changes of Industrial Production Indices compared to the previous month¹

(Per cent)

Economic activities	NACE.BG - 2008	2021					
		III	IV	V	VI	VII	VIII*
Industry	B_TO_E36	4.8	-0.4	-1.4	0.4	0.9	1.8
Mining and quarrying	B	4.8	-5.9	3.3	4.1	-9.9	17.6
Mining of coal and lignite	B05	38.7	-2.7	-7.1	6.9	-12.6	31.1
Extraction of crude petroleum and natural gas	B06
Mining of metal ores	B07	-9.3	-8.7	1.7	10.6	-11.7	17.2
Other mining and quarrying	B08	4.6	0.9	0.9	-4.3	2.5	-7.5
Mining support service activities	B09
Manufacturing	C	4.5	-1.0	-1.3	0.1	0.0	1.1
Manufacture of food products	C10	1.9	4.0	-2.1	-3.4	1.5	1.1
Manufacture of beverages	C11	-1.9	1.4	-4.8	-4.1	5.2	-2.7
Manufacture of tobacco products	C12	7.9	5.6	7.9	21.2	-1.5	-23.6
Manufacture of textiles	C13	-6.8	4.6	-5.1	4.8	-0.4	12.0
Manufacture of wearing apparel	C14	2.2	-3.4	-3.2	0.3	0.7	6.3
Manufacture of leather and related products	C15	8.0	3.0	-13.1	1.8	2.3	-2.6
Manufacture of wood and of products of wood and cork, except furniture; manufacture of articles of straw and plaiting materials	C16	9.7	-4.7	6.1	-10.4	4.7	8.1
Manufacture of paper and paper products	C17	2.9	-1.4	-3.6	9.6	4.6	2.3
Printing and reproduction of recorded media	C18	6.2	-2.5	-4.6	6.4	0.3	6.1
Manufacture of coke and refined petroleum products	C19
Manufacture of chemicals and chemical products	C20	-1.1	-14.1	12.8	6.6	0.7	-1.8
Manufacture of basic pharmaceutical products and pharmaceutical preparations	C21	11.8	-10.8	5.6	-5.7	3.7	10.0
Manufacture of rubber and plastic products	C22	-2.3	3.7	-1.7	0.0	-5.9	8.0
Manufacture of other non-metallic mineral products	C23	1.9	-2.9	7.7	-2.2	0.4	4.3
Manufacture of basic metals	C24	2.4	1.9	-5.1	-3.9	-14.1	1.8
Manufacture of fabricated metal products, except machinery and equipment	C25	0.7	10.3	-1.4	-8.4	11.0	-20.0
Manufacture of computer, electronic and optical products	C26	7.3	0.6	5.2	-2.3	1.9	5.0
Manufacture of electrical equipment	C27	6.4	7.0	-3.1	-2.7	-2.5	1.2
Manufacture of machinery and equipment n.e.c.	C28	5.4	-2.1	1.2	8.2	-3.2	1.9
Manufacture of motor vehicles, trailers and semi-trailers	C29	-1.0	-12.6	-8.1	9.2	-12.3	21.8
Manufacture of other transport equipment	C30	12.9	4.4	-14.6	23.9	-4.3	-8.9
Manufacture of furniture	C31	-2.4	-1.4	-0.9	2.3	0.4	-5.2
Other manufacturing	C32	-3.0	23.6	-18.0	12.2	10.5	4.9
Repair and installation of machinery and equipment	C33	6.9	-6.1	4.5	-5.5	-4.7	7.1
Electricity, gas, steam and air conditioning supply	D	6.6	1.7	-2.5	0.3	10.4	1.0
Electricity, gas, steam and air conditioning Supply	D35	6.6	1.7	-2.5	0.3	10.4	1.0

¹ Seasonally adjusted.

* Preliminary data.

„..“ - Confidential data.

Table 2
Changes of Industrial Production Indices compared to the same month of the previous year¹

Economic activities	NACE.BG - 2008	2021					
		III	IV	V	VI	VII	VIII*
Industry	B_TO_E36	7.2	22.1	16.4	10.5	8.6	10.8
Mining and quarrying	B	4.9	4.6	14.0	7.3	6.2	15.8
Mining of coal and lignite	B05	7.9	3.8	35.1	25.3	16.8	38.7
Extraction of crude petroleum and natural gas	B06
Mining of metal ores	B07	-5.7	-8.9	-11.0	-5.4	-9.2	4.7
Other mining and quarrying	B08	41.9	64.1	69.0	37.0	45.8	21.8
Mining support service activities	B09
Manufacturing	C	9.3	26.2	18.7	12.2	7.9	8.9
Manufacture of food products	C10	-1.5	17.2	10.7	0.1	5.3	15.2
Manufacture of beverages	C11	-34.7	-20.1	-30.8	-36.8	-30.3	-31.7
Manufacture of tobacco products	C12	-2.1	2.0	29.0	58.7	59.1	4.6
Manufacture of textiles	C13	17.3	36.9	7.9	16.9	12.9	29.0
Manufacture of wearing apparel	C14	7.7	5.8	-18.1	-1.5	-5.7	5.5
Manufacture of leather and related products	C15	12.3	20.5	-8.7	-15.8	-3.5	-1.2
Manufacture of wood and of products of wood and cork, except furniture; manufacture of articles of straw and plaiting materials	C16	25.8	46.6	47.6	14.7	18.4	26.2
Manufacture of paper and paper products	C17	1.8	7.7	5.9	12.7	24.4	27.9
Printing and reproduction of recorded media	C18	18.4	42.6	22.9	26.7	17.1	23.2
Manufacture of coke and refined petroleum products	C19
Manufacture of chemicals and chemical products	C20	-3.7	-9.8	3.0	5.5	7.2	3.5
Manufacture of basic pharmaceutical products and pharmaceutical preparations	C21	2.1	-16.7	-2.7	-10.2	-1.5	18.2
Manufacture of rubber and plastic products	C22	12.4	30.0	24.7	22.7	1.1	11.7
Manufacture of other non-metallic mineral products	C23	7.6	33.5	36.2	19.1	3.6	15.1
Manufacture of basic metals	C24	8.0	20.5	-0.5	-10.8	-16.4	-21.6
Manufacture of fabricated metal products, except machinery and equipment	C25	3.9	32.8	25.2	13.1	32.1	3.3
Manufacture of computer, electronic and optical products	C26	47.8	43.0	49.0	46.2	42.1	52.4
Manufacture of electrical equipment	C27	24.2	45.7	41.8	23.0	11.6	13.0
Manufacture of machinery and equipment n.e.c.	C28	11.1	41.1	43.4	42.6	23.3	20.2
Manufacture of motor vehicles, trailers and semi-trailers	C29	23.4	259.8	96.0	28.0	-8.6	-1.3
Manufacture of other transport equipment	C30	30.8	39.2	12.8	70.3	62.2	-11.6
Manufacture of furniture	C31	31.7	54.4	22.2	3.9	3.2	-6.4
Other manufacturing	C32	38.0	88.1	38.9	52.3	34.0	43.5
Repair and installation of machinery and equipment	C33	-16.8	-1.7	22.9	0.4	-17.5	12.9
Electricity, gas, steam and air conditioning supply	D	-1.7	9.6	8.4	2.9	17.6	19.9
Electricity, gas, steam and air conditioning supply	D35	-1.7	9.6	8.4	2.9	17.6	19.9

¹ Calendar adjusted.

* Preliminary data.

„..“ - Confidential data.

Table 3

Industrial Production Indices
(Seasonally adjusted, 2015 = 100)

NACE.BG - 2008	2020					2021							
	VIII	IX	X	XI	XII	I	II	III	IV	V	VI	VII	VIII*
B_TO_E36	100.6	103.1	103.8	102.2	102.3	103.3	104.2	109.2	108.8	107.3	107.7	108.7	110.7
B	107.8	103.4	94.9	87.8	100.1	87.1	110.7	116.1	109.2	112.8	117.5	105.8	124.4
B05	71.2	60.1	53.8	51.9	55.6	49.3	62.7	87.0	84.6	78.6	84.0	73.4	96.3
B06
B07	133.9	141.1	130.4	96.8	128.2	95.5	145.5	132.0	120.5	122.5	135.5	119.7	140.2
B08	109.6	107.7	106.4	128.5	143.4	144.8	139.8	146.3	147.5	148.8	142.4	146.0	135.0
B09
C	106.8	110.4	112.3	111.1	110.8	113.2	112.5	117.6	116.4	114.9	115.0	115.0	116.3
C10	98.9	104.6	106.2	105.9	103.9	113.2	110.5	112.6	117.1	114.7	110.8	112.5	113.7
C11	96.1	99.9	98.0	90.2	81.2	75.9	68.8	67.5	68.5	65.2	62.5	65.7	63.9
C12	35.8	32.7	32.0	34.1	37.3	29.2	33.5	36.1	38.1	41.1	49.9	49.1	37.5
C13	97.2	97.1	105.6	97.3	102.8	110.9	113.9	106.1	111.0	105.3	110.3	109.9	123.1
C14	71.6	71.2	71.7	67.7	66.8	71.8	72.2	73.8	71.3	69.0	69.3	69.7	74.1
C15	68.8	69.1	73.1	72.2	70.2	67.9	68.6	74.1	76.3	66.4	67.5	69.1	67.3
C16	73.2	74.5	74.1	78.6	78.4	83.0	81.1	89.0	84.9	90.0	80.7	84.4	91.3
C17	88.6	87.7	91.6	96.9	92.1	95.9	95.7	98.5	97.2	93.7	102.7	107.4	109.9
C18	101.8	102.2	104.2	100.9	99.6	108.0	110.9	117.7	114.7	109.4	116.4	116.8	123.9
C19
C20	116.7	110.0	114.5	113.3	112.7	113.3	119.0	117.7	101.2	114.1	121.7	122.5	120.2
C21	111.8	113.6	121.7	119.6	122.9	117.9	110.8	123.9	110.5	116.7	110.0	114.1	125.6
C22	141.2	144.9	145.2	141.8	148.5	152.9	155.1	151.6	157.1	154.5	154.5	145.3	156.9
C23	107.4	112.0	109.7	114.7	107.8	113.2	112.8	115.0	111.6	120.3	117.6	118.0	123.1
C24	115.3	112.4	110.0	111.0	115.1	114.6	113.7	116.5	118.7	112.7	108.3	93.0	94.7
C25	103.1	125.7	129.6	118.5	117.1	135.6	122.1	123.0	135.7	133.7	122.4	135.9	108.7
C26	146.5	149.3	170.5	183.7	166.3	198.0	186.6	200.2	201.5	211.9	207.1	211.1	221.5
C27	131.2	133.7	138.6	133.5	141.2	144.8	141.4	150.5	161.0	155.9	151.8	148.0	149.9
C28	99.8	107.1	105.4	103.6	108.9	108.6	106.8	112.6	110.3	111.6	120.7	116.9	119.2
C29	148.8	149.3	171.3	167.6	182.1	162.9	155.2	153.7	134.4	123.5	134.9	118.3	144.0
C30	198.5	187.8	196.7	195.5	161.0	186.7	192.2	216.9	226.5	193.4	239.7	229.4	208.8
C31	106.6	106.9	109.7	104.7	104.4	114.5	108.7	106.1	104.6	103.7	106.1	106.5	100.9
C32	107.1	115.4	108.7	107.5	96.8	98.8	115.1	111.6	138.0	113.1	126.9	140.3	147.1
C33	95.6	94.3	100.9	111.1	90.3	99.8	106.6	114.0	107.1	111.9	105.7	100.7	107.8
D	74.1	75.4	73.1	72.3	73.1	73.8	72.5	77.3	78.6	76.6	76.8	84.8	85.6
35	74.1	75.4	73.1	72.3	73.1	73.8	72.5	77.3	78.6	76.6	76.8	84.8	85.6

* Preliminary data.

...“ - Confidential data.

Table 4

**Industrial Production Indices
(Calendar adjusted, 2015 = 100)**

NACE.BG - 2008	2018	2019	2020					2021							
	VIII	VIII	VIII	IX	X	XI	XII	I	II	III	IV	V	VI	VII	VIII*
B_TO_E36	104.0	102.7	96.7	103.3	108.8	108.4	104.3	99.6	100.2	112.1	105.5	102.4	110.4	112.4	107.1
B	92.1	93.0	105.7	107.8	107.1	94.1	109.9	84.6	105.5	112.1	101.9	105.7	113.9	103.6	122.4
B05	75.5	72.6	67.8	65.4	74.8	64.9	73.2	63.2	64.7	79.5	66.9	61.0	66.2	66.0	94.0
B06
B07	105.4	106.9	133.9	141.1	130.4	96.8	128.2	95.5	140.2	131.0	120.5	120.6	144.4	119.7	140.2
B08	103.8	107.5	117.8	117.3	120.3	146.2	146.6	100.0	108.6	143.2	143.8	152.6	153.1	156.4	143.5
B09
C	111.0	109.9	102.4	111.9	120.2	118.6	107.0	102.8	105.2	118.9	114.7	113.2	121.3	121.1	111.5
C10	106.4	113.3	100.0	110.7	116.9	112.7	108.0	100.1	97.2	112.1	110.9	112.9	114.0	113.7	115.2
C11	127.2	134.9	123.6	115.3	93.6	81.1	75.2	45.3	46.2	58.3	61.4	68.0	75.2	84.9	84.4
C12	46.5	35.0	32.7	32.6	36.4	39.3	40.7	17.7	22.5	36.2	44.8	46.6	60.2	63.1	34.2
C13	81.2	73.1	76.6	93.5	111.3	101.7	90.2	101.5	116.7	116.0	113.2	115.7	122.3	112.6	98.8
C14	90.1	78.6	69.3	70.4	72.6	68.2	63.4	76.1	72.9	71.4	65.5	62.3	73.9	81.1	73.1
C15	80.6	75.2	57.5	68.2	81.9	81.6	61.9	66.8	66.4	76.0	71.9	61.9	73.0	85.4	56.8
C16	75.4	72.4	72.2	78.0	81.0	85.2	74.5	69.0	71.5	87.7	83.8	91.5	85.8	90.5	91.1
C17	99.8	94.7	85.3	84.8	94.8	99.2	88.0	96.2	94.8	103.2	96.7	94.9	104.9	108.4	109.1
C18	100.2	106.1	95.8	100.5	112.8	115.9	104.4	98.2	103.8	118.8	113.3	109.9	120.2	117.4	118.0
C19
C20	115.6	106.0	112.8	109.4	116.3	114.8	109.9	105.1	112.4	128.4	101.5	113.8	126.5	126.4	116.7
C21	102.1	99.5	97.1	109.9	120.5	131.1	126.6	114.5	98.6	139.4	108.7	116.6	113.1	112.6	114.8
C22	121.1	126.4	135.0	150.3	163.2	151.1	131.3	138.7	149.1	157.7	150.5	148.9	160.0	151.1	150.7
C23	114.1	113.5	113.1	120.2	122.8	124.2	95.8	80.5	91.1	112.3	114.9	129.4	127.4	128.8	130.1
C24	110.7	99.3	110.7	111.1	107.7	117.6	114.2	115.2	108.8	123.5	123.4	106.8	104.9	95.6	86.9
C25	133.1	127.7	101.6	129.2	135.5	130.8	128.0	103.0	112.3	124.6	131.3	128.5	129.2	146.2	104.9
C26	131.6	150.2	129.2	143.1	182.2	200.1	178.5	190.1	178.6	211.4	196.4	204.7	216.1	213.7	196.9
C27	113.3	115.9	119.2	137.5	154.0	147.4	125.8	138.0	139.9	157.3	157.6	147.8	158.5	151.5	134.7
C28	103.3	97.3	86.7	107.9	111.9	111.7	104.7	100.1	102.6	117.8	114.4	108.1	129.3	122.3	104.3
C29	117.7	123.5	128.8	153.7	191.1	183.6	153.5	159.1	150.9	159.9	134.3	113.8	139.6	115.6	127.2
C30	89.4	135.9	163.9	159.6	197.8	213.1	132.0	185.9	208.0	253.3	253.7	186.8	286.3	249.5	144.8
C31	103.5	100.4	105.8	109.5	118.1	112.1	101.8	99.2	98.7	106.9	99.7	100.2	110.6	112.4	99.0
C32	132.0	118.0	106.7	121.2	121.4	116.4	86.3	87.8	104.4	112.2	134.5	110.2	143.1	141.4	153.1
C33	138.8	124.4	92.8	97.9	104.9	127.4	119.0	72.5	92.2	115.4	96.0	103.2	109.1	103.7	104.7
D	79.4	75.9	69.0	67.0	65.3	75.6	91.5	93.2	78.6	87.5	71.1	62.0	66.9	82.1	82.7
D35	79.4	75.9	69.0	67.0	65.3	75.6	91.5	93.2	78.6	87.5	71.1	62.0	66.9	82.1	82.7

* Preliminary data.

„..“ - Confidential data.