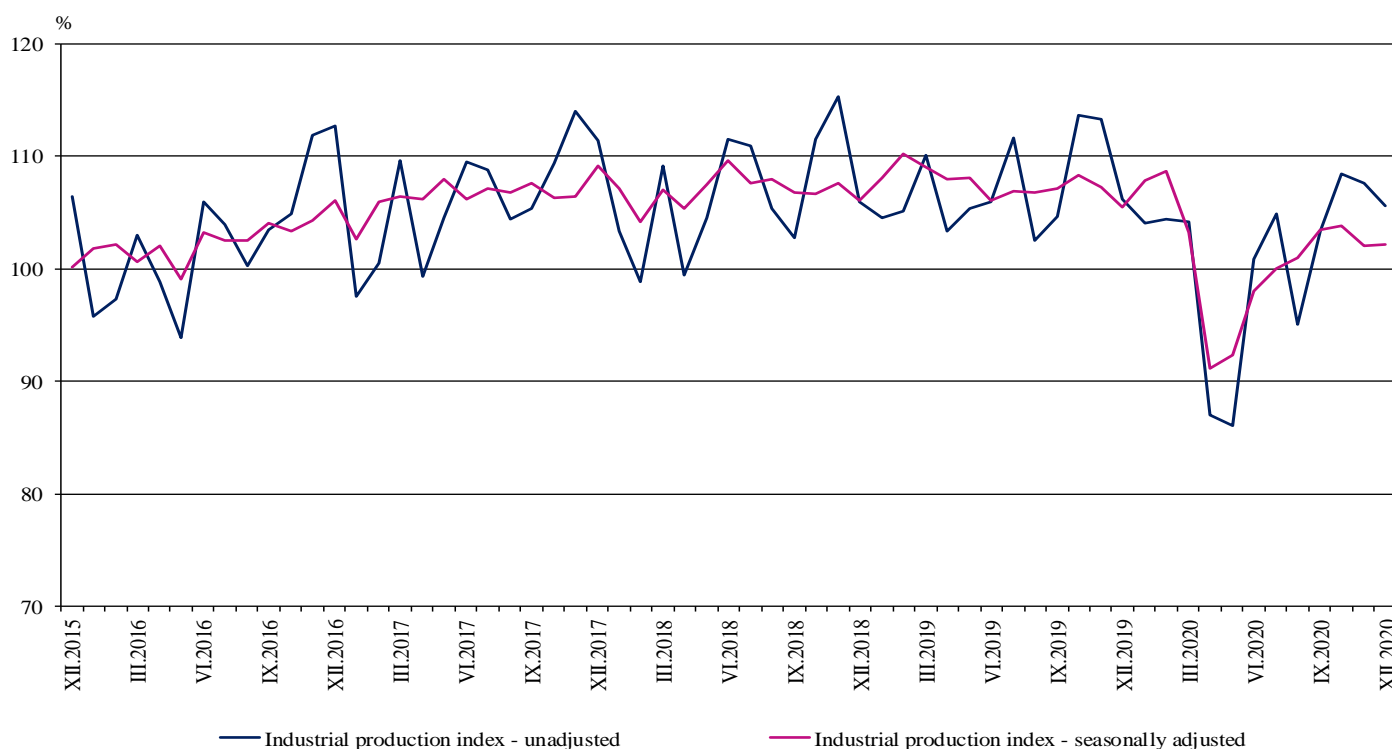


INDUSTRIAL PRODUCTION INDICES IN DECEMBER 2020¹

According to the preliminary data in December 2020 the Industrial Production Index², seasonally adjusted³, increased by 0.1 % as compared to November 2020.

In December 2020 the working day adjusted⁴ Industrial Production Index fell by 3.3% in comparison with the same month of 2019.

Figure 1. Industrial Production Indices (2015 = 100)



¹ December 2020 data are preliminary. The final data on Industrial Production and Turnover Indices for November 2020 can be found on the NSI website: <http://www.nsi.bg/en>.

² Monthly Industrial Production and Industrial turnover indices measure changes in production and turnover values of industrial enterprises. This information can be used to assess the current economic development and for short-term forecasts. Indices do not measure the actual production level, it aims to measure the average change in value of production between two points of time. Indices are compiled on the base of information collected through representative sampling survey on industrial enterprises. The sample covers enterprises with annual turnover more than 97% of total turnover in industry.

Industrial production indices are calculated at constant base year that is to say they are weighted with the structure of the value added at factor costs in the base year.

³ Seasonal adjustment is a statistical method, which eliminates the seasonal component of time series.

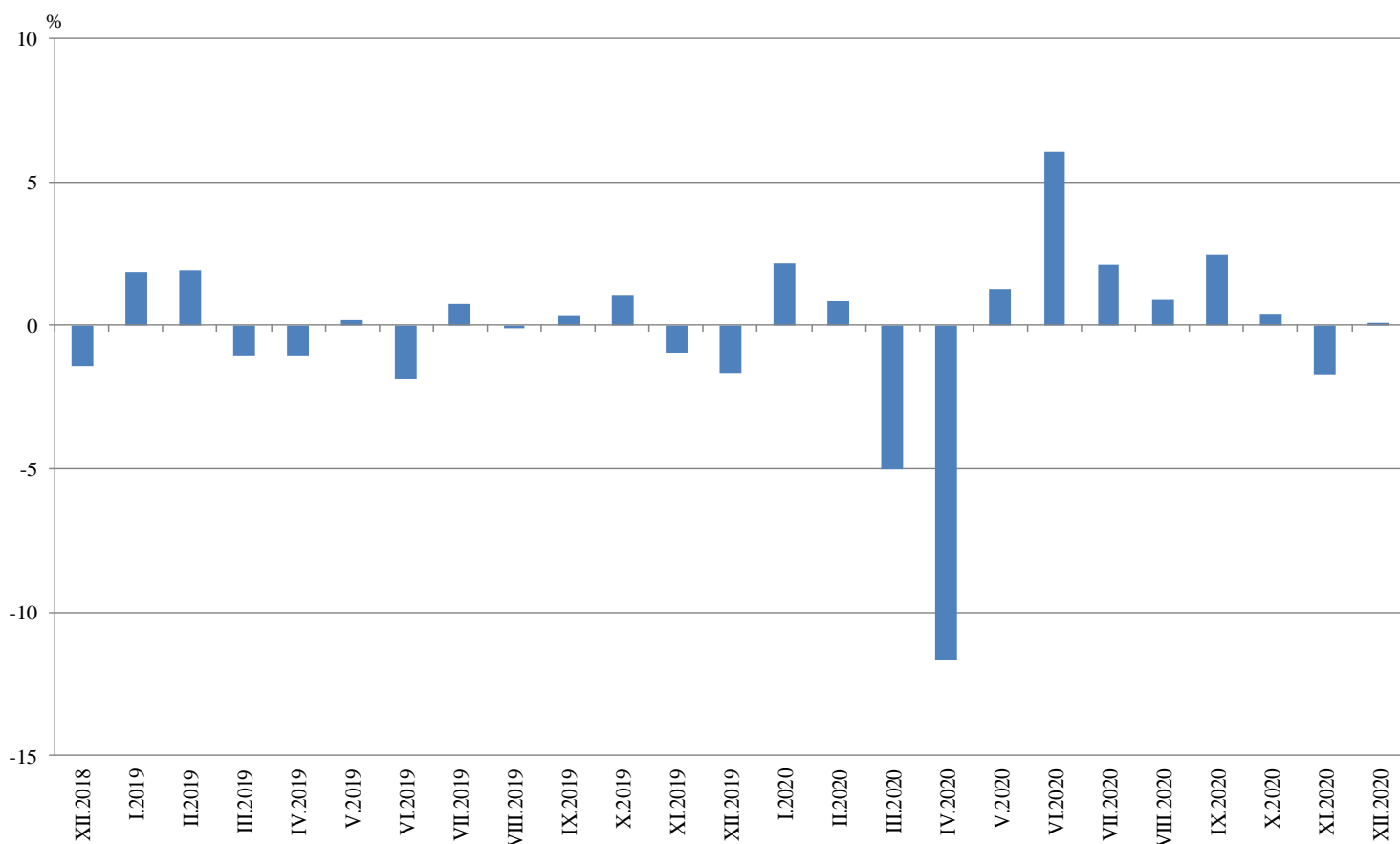
⁴ Working day adjustment is an adjustment for variations caused by calendar effects, different number of calendar and working days in the months, national holidays and outliers (for example the presence of more non-working days in May could contribute to the decline in the production in some activities).

Monthly changes

In December 2020 as compared to November 2020, the seasonally adjusted Industrial Production Index rose in the mining and quarrying industry by 12.3%, in the electricity, gas, steam and air conditioning supply by 0.7%, while in the manufacturing the industrial production decreased by 0.1%.

The most significant decrease in the manufacturing was seen in the repair and installation of machinery and equipment by 18.5%, in the manufacture of other transport equipment by 17.6% in the manufacture of beverages by 10.8% and in other manufacturing by 10.3%. Significant increase in the manufacturing was registered in the manufacture tobacco products - by 7.4%, in the manufacture of electrical equipment by 5.7%, in the manufacture of machinery and equipment n.e.c. by 5.5%, and in the manufacture of textiles by 5.3%.

**Figure 2. Changes of Industrial Production Indices compared to the previous month
(Seasonally adjusted)**

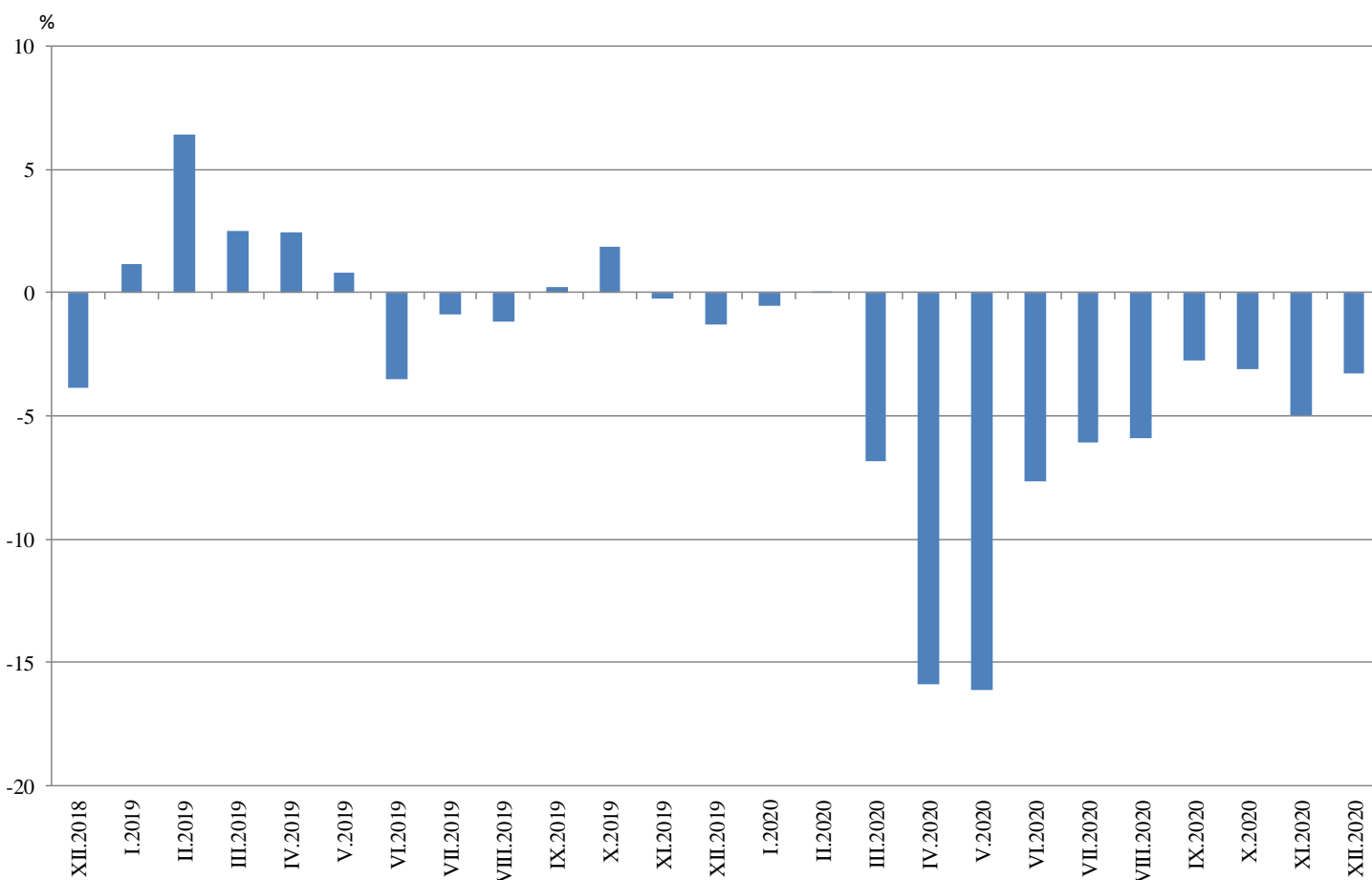


Annual changes

On annual basis in December 2020 Industrial Production Index calculated from working day adjusted data fell in the mining and quarrying industry by 6.9%, in the electricity, gas, steam and air conditioning supply by 6.0% and in the manufacturing by 2.2%.

In the manufacturing more considerable decline compared to the same month of the previous year was observed in the other manufacturing by 49.7%, in the manufacture of beverages by 23.4%, in the manufacture of leather and related products by 23.2%, in the repair and installation of machinery and equipment by 18.3%. Major increases were seen in the manufacture of motor vehicles, trailers and semi-trailers by 34.9%, in the manufacture of electrical equipment by 18.3% in the manufacture of basic pharmaceutical products and pharmaceutical preparations by 15.6%, and in the manufacture of fabricated metal products, except machinery and equipment by 15.5%.

Figure 3. Changes of Industrial Production Indices compared to the same month of the previous year (Working day adjusted)



Annex

Table 1

Changes of Industrial Production Indices compared to the previous month¹

(Per cent)

Economic activities	NACE.BG - 2008	2020					
		VII	VIII	IX	X	XI	XII*
Industry	B_TO_E36	2.1	0.9	2.5	0.4	-1.7	0.1
Mining and quarrying	B	-9.2	8.6	-4.4	-9.4	-6.3	12.3
Mining of coal and lignite	B05	-10.7	12.2	-15.8	-10.6	-3.8	1.4
Extraction of crude petroleum and natural gas	B06
Mining of metal ores	B07	-13.6	1.4	5.4	-8.0	-25.7	33.6
Other mining and quarrying	B08	-3.3	8.6	-2.3	-5.9	24.3	7.5
Mining support service activities	B09
Manufacturing	C	3.3	0.8	3.4	1.7	-1.5	-0.1
Manufacture of food products	C10	-3.6	-7.2	5.3	1.5	-0.3	-1.1
Manufacture of beverages	C11	1.0	-0.3	4.5	-2.0	-9.8	-10.8
Manufacture of tobacco products	C12	-3.7	-2.9	-9.1	-2.2	7.1	7.4
Manufacture of textiles	C13	1.4	1.1	0.5	5.8	-7.9	5.3
Manufacture of wearing apparel	C14	3.9	-2.0	-0.2	-1.0	-5.0	-1.3
Manufacture of leather and related products	C15	-0.4	-19.2	11.2	8.8	-8.1	-0.4
Manufacture of wood and of products of wood and cork, except furniture; manufacture of articles of straw and plaiting materials	C16	1.8	2.9	1.5	-0.4	6.1	-0.7
Manufacture of paper and paper products	C17	-4.9	0.9	0.0	5.0	4.6	-5.3
Printing and reproduction of recorded media	C18	7.0	1.2	0.8	2.2	-2.2	-2.8
Manufacture of coke and refined petroleum products	C19
Manufacture of chemicals and chemical products	C20	0.7	0.6	-5.5	4.1	-1.0	0.3
Manufacture of basic pharmaceutical products and pharmaceutical preparations	C21	-5.3	-2.3	1.8	7.5	-1.3	2.6
Manufacture of rubber and plastic products	C22	10.4	1.5	2.5	-0.1	-2.2	4.5
Manufacture of other non-metallic mineral products	C23	14.7	-7.1	4.3	-1.6	4.7	-6.8
Manufacture of basic metals	C24	-1.6	2.3	-2.8	-3.9	1.9	3.5
Manufacture of fabricated metal products, except machinery and equipment	C25	-4.1	0.6	22.1	3.5	-9.3	0.5
Manufacture of computer, electronic and optical products	C26	4.1	-1.5	1.2	15.9	7.7	-9.7
Manufacture of electrical equipment	C27	6.4	0.0	2.1	3.2	-2.8	5.7
Manufacture of machinery and equipment n.e.c.	C28	10.2	5.0	7.6	-1.6	-1.7	5.5
Manufacture of motor vehicles, trailers and semi-trailers	C29	19.7	18.9	12.3	14.6	3.1	4.0
Manufacture of other transport equipment	C30	1.4	16.4	-5.1	5.1	-2.3	-17.6
Manufacture of furniture	C31	2.9	3.6	0.0	2.1	-4.6	0.1
Other manufacturing	C32	28.0	1.4	7.6	-7.0	-4.3	-10.3
Repair and installation of machinery and equipment	C33	16.6	-22.0	-1.4	7.4	9.7	-18.5
Electricity, gas, steam and air conditioning supply	D	0.0	-0.7	0.0	-2.5	-0.8	0.7
Electricity, gas, steam and air conditioning supply	D35	0.0	-0.7	0.0	-2.5	-0.8	0.7

¹ Seasonally adjusted.

* Preliminary data.

„..“ - Confidential data.

Table 2

Changes of Industrial Production Indices compared to the same month of the previous year¹
(Per cent)

Economic activities	NACE.BG - 2008	2020					
		VII	VIII	IX	X	XI	XII*
Industry	B_TO_E36	-6.1	-5.9	-2.7	-3.1	-5.0	-3.3
Mining and quarrying	B	-3.1	13.6	-2.3	-12.8	-15.7	-6.9
Mining of coal and lignite	B05	-20.5	-6.6	-29.4	-25.7	-23.6	-25.6
Extraction of crude petroleum and natural gas	B06
Mining of metal ores	B07	4.9	25.2	12.5	-9.8	-28.3	-10.2
Other mining and quarrying	B08	-2.3	9.3	0.0	-5.1	21.4	47.2
Mining support service activities	B09
Manufacturing	C	-5.9	-6.8	-2.3	-1.6	-3.8	-2.2
Manufacture of food products	C10	-0.6	-11.3	-3.8	-6.9	-3.7	-5.1
Manufacture of beverages	C11	-2.9	-8.4	-1.5	-4.0	-11.9	-23.4
Manufacture of tobacco products	C12	-30.3	-6.6	-33.0	-36.1	-29.8	-5.2
Manufacture of textiles	C13	2.6	4.8	-3.7	7.2	-4.7	3.0
Manufacture of wearing apparel	C14	-12.0	-12.4	-15.2	-12.5	-19.0	-17.1
Manufacture of leather and related products	C15	-10.9	-26.0	-27.2	-10.7	-29.5	-23.2
Manufacture of wood and of products of wood and cork, except furniture; manufacture of articles of straw and plaiting materials	C16	-7.1	-0.2	-6.0	-6.0	0.3	-6.6
Manufacture of paper and paper products	C17	-15.0	-10.3	-10.0	-7.3	3.1	-4.5
Printing and reproduction of recorded media	C18	-16.2	-10.1	-8.4	-6.8	-16.4	-5.1
Manufacture of coke and refined petroleum products	C19
Manufacture of chemicals and chemical products	C20	-1.4	5.8	-4.3	-3.2	0.7	-4.7
Manufacture of basic pharmaceutical products and pharmaceutical preparations	C21	-10.0	-1.6	2.6	11.9	-2.5	15.6
Manufacture of rubber and plastic products	C22	6.0	6.9	11.2	8.2	1.0	9.0
Manufacture of other non-metallic mineral products	C23	7.8	-0.4	2.0	-1.9	2.0	-13.1
Manufacture of basic metals	C24	-1.6	11.6	15.2	-12.7	-2.8	14.0
Manufacture of fabricated metal products, except machinery and equipment	C25	-11.4	-20.3	7.6	13.0	1.3	15.5
Manufacture of computer, electronic and optical products	C26	-4.8	-14.0	-7.4	10.1	18.8	-5.6
Manufacture of electrical equipment	C27	7.3	2.3	6.3	15.8	4.0	18.3
Manufacture of machinery and equipment n.e.c.	C28	-19.1	-11.2	-6.6	-11.7	-10.2	3.0
Manufacture of motor vehicles, trailers and semi-trailers	C29	-17.7	6.3	0.0	20.5	17.1	34.9
Manufacture of other transport equipment	C30	4.7	20.8	19.3	21.3	11.7	-13.9
Manufacture of furniture	C31	-1.2	5.5	7.1	8.6	0.3	3.9
Other manufacturing	C32	-35.2	-9.7	-11.8	-31.2	-44.1	-49.7
Repair and installation of machinery and equipment	C33	3.4	-25.4	-26.4	-21.4	-0.6	-18.3
Electricity, gas, steam and air conditioning supply	D	-9.7	-9.8	-6.6	-7.0	-6.7	-6.0
Electricity, gas, steam and air conditioning supply	D35	-9.7	-9.8	-6.6	-7.0	-6.7	-6.0

¹ Working day adjusted.

* Preliminary data.

„..“ - Confidential data.

Table 3

Industrial Production Indices
(Seasonally adjusted, 2015 = 100)

NACE.BG - 2008	2019	2020											
	XII	I	II	III	IV	V	VI	VII	VIII	IX	X	XI	XII*
B_TO_E36	105.5	107.8	108.7	103.2	91.2	92.4	98.0	100.1	101.0	103.5	103.9	102.1	102.2
B	107.0	103.8	111.1	112.0	105.8	99.8	110.0	99.9	108.4	103.7	93.9	88.1	98.9
B05	74.8	66.2	85.3	84.1	83.6	62.7	71.5	63.9	71.7	60.3	53.9	51.9	52.6
B06
B07	143.5	127.7	128.7	139.0	132.2	135.5	152.7	132.0	133.8	141.1	129.9	96.5	128.9
B08	100.8	130.5	107.2	109.9	89.8	87.9	103.0	99.6	108.2	105.7	99.5	123.7	133.0
B09
C	113.3	118.1	116.5	108.5	94.2	96.6	102.6	106.0	106.9	110.5	112.5	110.8	110.7
C10	110.0	120.2	115.9	115.1	101.0	104.1	110.6	106.6	98.9	104.1	105.7	105.3	104.1
C11	99.2	118.6	111.7	95.1	81.7	92.8	97.0	97.9	97.7	102.1	100.0	90.3	80.5
C12	43.7	39.2	39.2	40.2	41.7	34.0	39.0	37.6	36.5	33.2	32.4	34.7	37.3
C13	98.1	110.8	102.6	89.3	80.9	96.0	94.1	95.5	96.5	97.0	102.6	94.5	99.5
C14	79.1	80.0	79.6	68.6	69.6	87.2	70.7	73.4	72.0	71.9	71.2	67.6	66.7
C15	89.8	92.8	86.8	61.9	66.2	74.7	81.2	80.8	65.3	72.6	79.0	72.6	72.3
C16	83.9	86.0	79.3	71.6	57.6	61.1	69.7	71.0	73.0	74.1	73.9	78.4	77.9
C17	96.6	95.1	98.9	97.9	91.6	88.9	91.1	86.7	87.5	87.5	91.8	96.1	90.9
C18	105.9	111.9	113.5	99.5	85.0	90.0	93.4	99.9	101.1	102.0	104.2	101.8	99.0
C19
C20	119.0	118.6	124.2	122.3	111.9	109.7	114.7	115.6	116.2	109.8	114.2	113.1	113.5
C21	107.7	114.8	107.0	125.4	130.0	121.2	120.3	114.0	111.4	113.4	121.9	120.3	123.4
C22	139.1	139.4	140.7	133.1	120.0	120.0	125.9	139.0	141.1	144.6	144.5	141.3	147.8
C23	122.5	123.0	118.5	103.8	90.4	89.7	101.0	115.8	107.6	112.2	110.5	115.6	107.8
C24	112.1	113.5	113.2	109.1	106.2	112.4	115.7	113.8	116.4	113.1	108.7	110.8	114.6
C25	101.6	125.8	137.9	118.2	102.1	110.2	106.8	102.5	103.1	125.9	130.3	118.2	118.8
C26	177.6	156.5	163.3	138.2	142.6	143.1	141.1	146.9	144.7	146.5	169.7	182.9	165.2
C27	121.5	126.2	132.6	120.0	110.6	109.0	121.8	129.5	129.5	132.2	136.5	132.7	140.2
C28	107.8	116.4	113.3	102.2	78.8	76.6	86.2	95.0	99.7	107.3	105.6	103.7	109.4
C29	128.0	152.9	151.7	122.2	39.1	57.9	90.9	108.9	129.5	145.5	166.7	171.9	178.8
C30	174.1	184.5	191.3	166.6	179.0	162.6	169.1	171.5	199.7	189.5	199.1	194.6	160.3
C31	98.5	105.7	105.4	78.5	69.4	81.0	100.7	103.7	107.4	107.4	109.7	104.7	104.8
C32	180.5	175.7	200.4	79.0	76.3	82.0	83.2	106.6	108.0	116.2	108.1	103.5	92.8
C33	108.8	140.9	128.1	140.2	109.5	92.1	105.1	122.6	95.7	94.3	101.3	111.1	90.5
D	77.6	77.9	78.1	81.9	73.5	71.3	74.9	74.9	74.4	74.4	72.6	72.0	72.5
35	77.6	77.9	78.1	81.9	73.5	71.3	74.9	74.9	74.4	74.4	72.6	72.0	72.5

* Preliminary data.

...“ - Confidential data.

Table 4

Industrial Production Indices
(Working day adjusted, 2015 = 100)

NACE.BG - 2008	2017	2018	2019	2020											
	XII	XII	XII	I	II	III	IV	V	VI	VII	VIII	IX	X	XI	XII*
B_TO_E36	113.6	109.3	107.9	103.1	105.2	104.9	86.7	87.8	100.0	103.5	96.7	103.3	108.7	108.3	104.4
B	109.2	111.6	116.5	102.6	105.5	106.9	97.5	93.0	106.3	97.5	105.7	107.8	105.8	94.0	108.5
B05	104.2	116.0	93.6	81.7	87.8	73.6	64.5	45.2	52.8	56.2	67.8	65.4	74.8	64.9	69.7
B06
B07	115.8	117.4	143.5	127.7	128.7	139.0	132.2	135.5	152.7	132.0	133.8	141.1	129.9	96.5	128.9
B08	95.6	89.9	99.7	86.6	82.2	100.9	87.7	90.3	112.5	107.3	117.8	117.3	113.5	146.4	146.9
B09
C	113.5	109.7	109.7	104.9	110.7	108.6	91.2	95.1	108.1	112.3	102.4	111.9	120.2	118.5	107.3
C10	115.8	109.4	114.7	103.1	100.5	113.9	95.1	101.7	113.8	108.0	100.5	110.8	116.5	112.5	108.8
C11	101.3	101.4	96.8	75.7	81.0	89.3	75.2	98.2	118.8	121.9	123.7	115.2	94.1	81.3	74.2
C12	56.3	63.4	43.0	25.3	24.8	37.4	44.2	36.3	38.5	39.7	32.7	32.6	36.4	39.3	40.7
C13	86.6	88.4	85.3	96.7	100.7	99.9	82.4	106.9	104.5	99.7	76.7	93.5	108.5	99.2	87.8
C14	95.4	80.8	76.2	82.6	79.9	66.2	62.0	78.2	75.0	85.8	69.2	70.4	72.5	67.9	63.1
C15	88.3	80.8	79.5	92.7	86.6	65.0	59.3	68.8	88.8	91.5	55.6	69.4	89.3	78.4	61.1
C16	81.5	73.6	79.3	70.5	70.4	69.7	56.8	61.2	74.7	76.4	72.3	78.0	81.0	85.3	74.1
C17	90.5	93.7	92.0	93.6	96.3	101.4	89.9	89.1	93.1	86.5	85.0	85.0	95.3	99.2	87.8
C18	107.5	108.8	109.9	98.9	105.9	100.4	79.9	88.8	94.8	100.3	95.4	100.5	112.8	117.7	104.3
C19
C20	124.6	112.3	116.2	109.7	116.5	132.5	114.4	109.2	118.6	118.2	112.1	109.3	116.0	114.7	110.8
C21	118.3	132.1	109.5	111.5	99.2	136.8	131.0	118.7	126.4	114.5	97.8	110.3	120.9	131.1	126.5
C22	107.5	120.6	120.3	123.5	131.0	139.9	116.0	118.0	130.7	149.8	135.1	150.3	163.3	151.1	131.1
C23	92.2	101.3	110.3	87.5	96.8	104.4	87.8	95.5	107.9	126.2	113.0	120.5	123.4	125.4	95.8
C24	115.4	113.7	100.0	119.2	112.1	114.5	102.7	107.4	117.6	114.3	110.9	111.1	107.8	117.6	114.0
C25	151.2	113.5	113.2	92.1	125.6	119.9	97.7	105.2	114.2	109.7	102.1	129.3	135.9	130.5	130.7
C26	138.7	144.4	189.6	143.3	153.7	143.1	137.9	136.4	147.7	150.0	129.3	143.1	182.2	200.3	179.0
C27	102.5	107.7	106.4	115.5	130.2	125.9	107.6	103.1	128.3	135.1	118.5	136.8	153.4	147.3	125.9
C28	120.7	118.5	102.0	105.1	109.7	106.0	80.9	75.6	91.1	99.5	86.4	107.9	112.3	111.7	105.0
C29	117.8	103.5	114.2	157.0	155.4	126.6	40.0	58.1	107.7	115.5	131.6	151.9	190.7	183.6	154.1
C30	89.1	108.8	153.3	182.2	204.9	193.7	176.2	168.4	168.1	153.8	164.2	159.6	197.8	213.1	132.0
C31	115.0	107.0	99.2	91.3	95.8	80.9	64.7	81.3	106.5	108.9	105.9	109.5	118.1	112.7	103.1
C32	129.3	129.3	163.3	161.3	182.7	81.3	73.2	81.3	93.9	108.6	106.6	121.2	119.5	111.7	82.1
C33	152.3	176.3	146.1	102.2	109.1	138.7	97.8	83.9	107.4	126.8	92.8	98.0	105.0	127.3	119.4
D	116.3	106.8	97.1	97.7	85.0	91.8	65.2	57.3	65.0	69.8	69.0	66.9	65.1	75.5	91.3
D35	116.3	106.8	97.1	97.7	85.0	91.8	65.2	57.3	65.0	69.8	69.0	66.9	65.1	75.5	91.3

* Preliminary data.

„..“ - Confidential data.