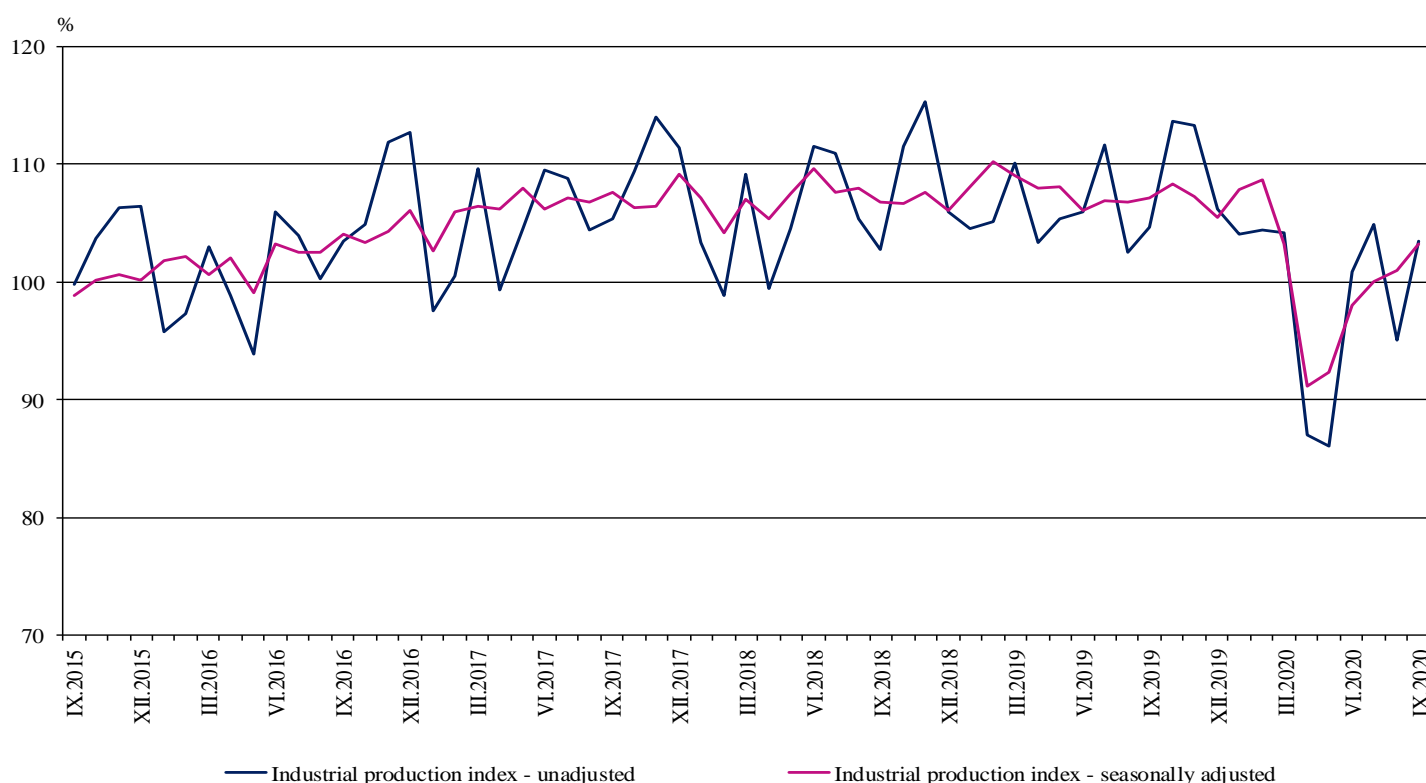


INDUSTRIAL PRODUCTION INDICES IN SEPTEMBER 2020¹

According to the preliminary data in September 2020 the Industrial Production Index², seasonally adjusted³, increased by 2.3% as compared to August 2020.

In September 2020 the working day adjusted⁴ Industrial Production Index fell by 2.6% in comparison with the same month of 2019.

Figure 1. Industrial Production Indices (2015 = 100)



¹ September 2020 data are preliminary. The final data on Industrial Production and Turnover Indices for August 2020 can be found on the NSI website: <http://www.nsi.bg/en>.

² Monthly Industrial Production and Industrial turnover indices measure changes in production and turnover values of industrial enterprises. This information can be used to assess the current economic development and for short-term forecasts. Indices do not measure the actual production level, it aims to measure the average change in value of production between two points of time. Indices are compiled on the base of information collected through representative sampling survey on industrial enterprises. The sample covers enterprises with annual turnover more than 97% of total turnover in industry.

Industrial production indices are calculated at constant base year that is to say they are weighted with the structure of the value added at factor costs in the base year.

³ Seasonal adjustment is a statistical method, which eliminates the seasonal component of time series.

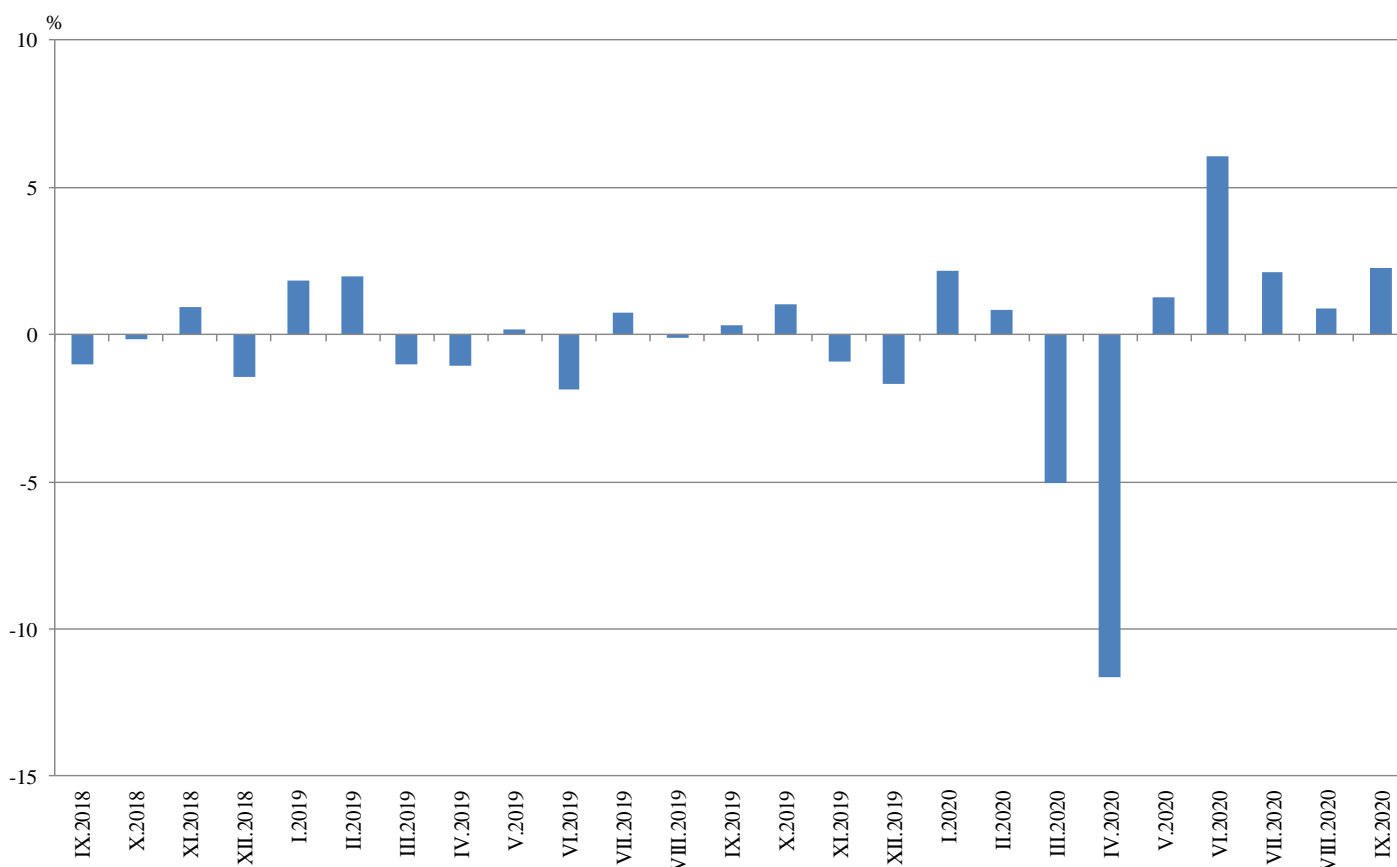
⁴ Working day adjustment is an adjustment for variations caused by calendar effects, different number of calendar and working days in the months, national holidays and outliers (for example the presence of more non-working days in May could contribute to the decline in the production in some activities).

Monthly changes

In September 2020 as compared to August 2020, the seasonally adjusted Industrial Production Index rose in the manufacturing by 3.5% and in the electricity, gas, steam and air conditioning supply by 0.2%, while the production went down in the mining and quarrying industry by 4.3%.

The most significant production increases in the manufacturing were registered in the manufacture of fabricated metal products, except machinery and equipment by 21.9%, in the other manufacturing by 10.0%, in the manufacture of motor vehicles, trailers and semi-trailers by 9.0%, in the manufacture of machinery and equipment n.e.c by 7.5%. Important decreases were seen in the manufacture of tobacco products by 8.6%, in the manufacture of other transport equipment by 5.5%, in the manufacture of chemicals and chemical products by 4.3%.

Figure 2. Changes of Industrial Production Indices compared to the previous month (Seasonally adjusted)

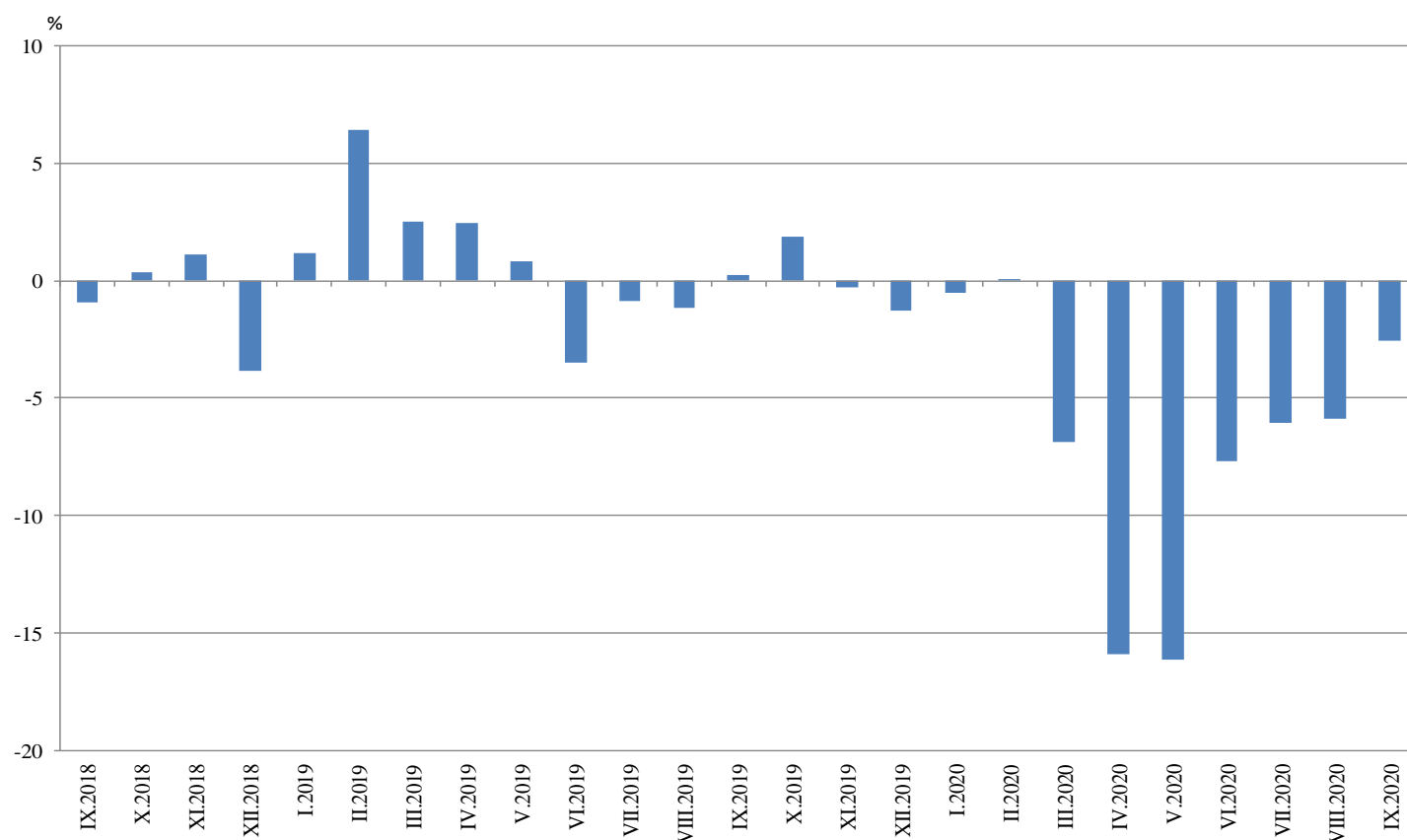


Annual changes

On annual basis in September 2020 Industrial Production Index calculated from working day adjusted data fell in the electricity, gas, steam and air conditioning supply by 7.1%, in the mining and quarrying industry by 2.4%, and in the manufacturing by 1.9%.

In the manufacturing, the more considerable decreases compared to the same month of the previous year were registered in the manufacture of tobacco products by 33.0%, in the manufacture of leather and related products by 26.9%, in the repair and installation of machinery and equipment by 26.2%, in the manufacture of wearing apparel by 14.9%. Major increases were seen in the manufacture of other transport equipment by 19.3%, in the manufacture of basic metals by 15.0%, in the manufacture of rubber and plastic products by 11.6%, in the manufacture of furniture by 8.6%.

Figure 3. Changes of Industrial Production Indices compared to the same month of the previous year (Working day adjusted)



Annex

Table 1

Changes of Industrial Production Indices compared to the previous month¹

(Per cent)

Economic activities	NACE.BG - 2008	2020					
		IV	V	VI	VII	VIII	IX*
Industry	B_TO_E36	-11.7	1.3	6.1	2.1	0.9	2.3
Mining and quarrying	B	-5.6	-5.6	10.2	-9.2	8.6	-4.3
Mining of coal and lignite	B05	-0.6	-25.0	14.1	-10.7	12.2	-15.4
Extraction of crude petroleum and natural gas	B06
Mining of metal ores	B07	-4.9	2.5	12.7	-13.6	1.4	5.4
Other mining and quarrying	B08	-18.3	-2.2	17.2	-3.3	8.6	-2.7
Mining support service activities	B09
Manufacturing	C	-13.2	2.5	6.2	3.3	0.8	3.5
Manufacture of food products	C10	-12.2	3.0	6.2	-3.6	-7.2	5.7
Manufacture of beverages	C11	-14.1	13.6	4.5	1.0	-0.3	4.9
Manufacture of tobacco products	C12	3.6	-18.4	14.8	-3.7	-2.9	-8.6
Manufacture of textiles	C13	-9.4	18.7	-2.0	1.4	1.1	-0.5
Manufacture of wearing apparel	C14	1.5	25.3	-19.0	3.9	-2.0	0.0
Manufacture of leather and related products	C15	7.0	12.7	8.7	-0.4	-19.2	5.6
Manufacture of wood and of products of wood and cork, except furniture; manufacture of articles of straw and plaiting materials	C16	-19.5	6.1	14.1	1.8	2.9	2.0
Manufacture of paper and paper products	C17	-6.5	-3.0	2.5	-4.9	0.9	-0.7
Printing and reproduction of recorded media	C18	-14.5	5.8	3.8	7.0	1.2	-0.1
Manufacture of coke and refined petroleum products	C19
Manufacture of chemicals and chemical products	C20	-8.5	-2.0	4.6	0.7	0.6	-4.3
Manufacture of basic pharmaceutical products and pharmaceutical preparations	C21	3.7	-6.8	-0.8	-5.3	-2.3	1.8
Manufacture of rubber and plastic products	C22	-9.8	0.0	4.9	10.4	1.5	2.7
Manufacture of other non-metallic mineral products	C23	-12.9	-0.7	12.5	14.7	-7.1	4.0
Manufacture of basic metals	C24	-2.6	5.8	2.9	-1.6	2.3	-0.6
Manufacture of fabricated metal products, except machinery and equipment	C25	-13.7	8.0	-3.1	-4.1	0.6	21.9
Manufacture of computer, electronic and optical products	C26	3.2	0.3	-1.4	4.1	-1.5	1.0
Manufacture of electrical equipment	C27	-7.9	-1.4	11.7	6.4	0.0	2.3
Manufacture of machinery and equipment n.e.c.	C28	-22.9	-2.8	12.6	10.2	5.0	7.5
Manufacture of motor vehicles, trailers and semi-trailers	C29	-68.1	48.2	57.2	19.7	18.9	9.0
Manufacture of other transport equipment	C30	7.4	-9.2	4.0	1.4	16.4	-5.5
Manufacture of furniture	C31	-11.7	16.7	24.4	2.9	3.6	1.4
Other manufacturing	C32	-3.4	7.5	1.5	28.0	1.4	10.0
Repair and installation of machinery and equipment	C33	-21.9	-15.9	14.2	16.6	-22.0	-1.2
Electricity, gas, steam and air conditioning supply	D	-10.2	-3.1	5.1	0.0	-0.7	0.2
Electricity, gas, steam and air conditioning supply	D35	-10.2	-3.1	5.1	0.0	-0.7	0.2

¹ Seasonally adjusted.

* Preliminary data.

„..“ - Confidential data.

Table 2

Changes of Industrial Production Indices compared to the same month of the previous year¹
(Per cent)

Economic activities	NACE.BG - 2008	2020					
		IV	V	VI	VII	VIII	IX*
Industry	B_TO_E36	-15.9	-16.1	-7.7	-6.1	-5.9	-2.6
Mining and quarrying	B	8.8	-8.1	16.4	-3.1	13.6	-2.4
Mining of coal and lignite	B05	12.0	-42.5	-7.1	-20.5	-6.6	-29.4
Extraction of crude petroleum and natural gas	B06
Mining of metal ores	B07	13.6	11.5	30.0	4.9	25.2	12.5
Other mining and quarrying	B08	-10.6	-16.5	9.5	-2.3	9.3	-0.8
Mining support service activities	B09
Manufacturing	C	-18.8	-16.9	-9.7	-5.9	-6.8	-1.9
Manufacture of food products	C10	-7.2	-6.0	4.2	-0.6	-11.3	-3.4
Manufacture of beverages	C11	-26.6	-11.5	-7.3	-2.9	-8.4	-0.7
Manufacture of tobacco products	C12	-6.7	-46.3	-6.9	-30.3	-6.6	-33.0
Manufacture of textiles	C13	-10.2	8.0	-5.5	2.6	4.8	-3.9
Manufacture of wearing apparel	C14	-19.6	1.9	-15.4	-12.0	-12.4	-14.9
Manufacture of leather and related products	C15	-33.0	-29.1	-9.5	-10.9	-26.0	-26.9
Manufacture of wood and of products of wood and cork, except furniture; manufacture of articles of straw and plaiting materials	C16	-24.3	-23.8	-2.7	-7.1	-0.2	-5.7
Manufacture of paper and paper products	C17	-9.5	-16.1	-7.0	-15.0	-10.3	-10.0
Printing and reproduction of recorded media	C18	-33.5	-31.4	-23.2	-16.2	-10.1	-9.1
Manufacture of coke and refined petroleum products	C19
Manufacture of chemicals and chemical products	C20	-2.4	-10.6	-0.8	-1.4	5.8	-3.1
Manufacture of basic pharmaceutical products and pharmaceutical preparations	C21	19.0	4.2	1.6	-10.0	-1.6	3.3
Manufacture of rubber and plastic products	C22	-15.3	-13.9	-8.5	6.0	6.9	11.6
Manufacture of other non-metallic mineral products	C23	-19.6	-19.1	-8.5	7.8	-0.4	1.5
Manufacture of basic metals	C24	-4.3	16.1	31.0	-1.6	11.6	15.0
Manufacture of fabricated metal products, except machinery and equipment	C25	-13.9	-5.5	-14.1	-11.4	-20.3	8.0
Manufacture of computer, electronic and optical products	C26	-7.1	-2.4	-12.3	-4.8	-14.0	-7.8
Manufacture of electrical equipment	C27	-18.2	-18.8	-2.8	7.3	2.3	7.1
Manufacture of machinery and equipment n.e.c.	C28	-37.4	-39.2	-29.4	-19.1	-11.2	-6.7
Manufacture of motor vehicles, trailers and semi-trailers	C29	-73.9	-62.6	-26.0	-17.7	6.3	-0.1
Manufacture of other transport equipment	C30	6.1	-0.1	18.1	4.7	20.8	19.3
Manufacture of furniture	C31	-31.5	-22.5	-2.3	-1.2	5.5	8.6
Other manufacturing	C32	-44.2	-44.6	-46.1	-35.2	-9.7	-9.5
Repair and installation of machinery and equipment	C33	-21.7	-29.7	-24.8	3.4	-25.4	-26.2
Electricity, gas, steam and air conditioning supply	D	-10.8	-15.6	-8.5	-9.7	-9.8	-7.1
Electricity, gas, steam and air conditioning supply	D35	-10.8	-15.6	-8.5	-9.7	-9.8	-7.1

¹ Working day adjusted.

* Preliminary data.

„..“ - Confidential data.

Table 3

Industrial Production Indices
(Seasonally adjusted, 2015 = 100)

NACE.BG - 2008	2019				2020								
	IX	X	XI	XII	I	II	III	IV	V	VI	VII	VIII	IX*
B_TO_E36	107.2	108.3	107.3	105.5	107.8	108.7	103.2	91.2	92.4	98.0	100.1	101.0	103.3
B	106.1	107.0	102.9	107.0	103.8	111.1	112.0	105.8	99.8	110.0	99.9	108.4	103.8
B05	87.1	78.4	71.8	74.8	66.2	85.3	84.1	83.6	62.7	71.5	63.9	71.7	60.7
B06
B07	125.4	144.0	134.4	143.5	127.7	128.7	139.0	132.2	135.5	152.7	132.0	133.8	141.1
B08	106.2	105.0	108.4	100.8	130.5	107.2	109.9	89.8	87.9	103.0	99.6	108.2	105.3
B09
C	113.9	116.0	115.8	113.3	118.1	116.5	108.5	94.2	96.6	102.6	106.0	106.9	110.7
C10	107.7	113.8	109.5	110.0	120.2	115.9	115.1	101.0	104.1	110.6	106.6	98.9	104.5
C11	105.5	108.3	103.8	99.2	118.6	111.7	95.1	81.7	92.8	97.0	97.9	97.7	102.5
C12	48.8	47.3	49.2	43.7	39.2	39.2	40.2	41.7	34.0	39.0	37.6	36.5	33.4
C13	100.8	98.3	99.4	98.1	110.8	102.6	89.3	80.9	96.0	94.1	95.5	96.5	96.0
C14	84.1	83.0	82.2	79.1	80.0	79.6	68.6	69.6	87.2	70.7	73.4	72.0	72.0
C15	91.4	94.9	104.6	89.8	92.8	86.8	61.9	66.2	74.7	81.2	80.8	65.3	68.9
C16	79.3	78.5	78.8	83.9	86.0	79.3	71.6	57.6	61.1	69.7	71.0	73.0	74.5
C17	95.9	98.1	96.2	96.6	95.1	98.9	97.9	91.6	88.9	91.1	86.7	87.5	86.8
C18	112.8	113.9	123.8	105.9	111.9	113.5	99.5	85.0	90.0	93.4	99.9	101.1	101.0
C19
C20	114.3	118.0	112.3	119.0	118.6	124.2	122.3	111.9	109.7	114.7	115.6	116.2	111.2
C21	108.1	110.4	122.0	107.7	114.8	107.0	125.4	130.0	121.2	120.3	114.0	111.4	113.3
C22	133.0	136.9	140.9	139.1	139.4	140.7	133.1	120.0	120.0	125.9	139.0	141.1	144.8
C23	110.2	112.4	115.2	122.5	123.0	118.5	103.8	90.4	89.7	101.0	115.8	107.6	111.9
C24	108.0	111.6	111.5	112.1	113.5	113.2	109.1	106.2	112.4	115.7	113.8	116.4	115.7
C25	117.2	117.7	117.2	101.6	125.8	137.9	118.2	102.1	110.2	106.8	102.5	103.1	125.7
C26	158.7	157.8	160.4	177.6	156.5	163.3	138.2	142.6	143.1	141.1	146.9	144.7	146.1
C27	126.4	121.6	127.8	121.5	126.2	132.6	120.0	110.6	109.0	121.8	129.5	129.5	132.5
C28	117.2	121.1	115.4	107.8	116.4	113.3	102.2	78.8	76.6	86.2	95.0	99.7	107.2
C29	151.5	150.6	149.6	128.0	152.9	151.7	122.2	39.1	57.9	90.9	108.9	129.5	141.2
C30	157.9	167.2	179.9	174.1	184.5	191.3	166.6	179.0	162.6	169.1	171.5	199.7	188.8
C31	99.8	101.0	102.5	98.5	105.7	105.4	78.5	69.4	81.0	100.7	103.7	107.4	108.9
C32	135.0	158.9	184.4	180.5	175.7	200.4	79.0	76.3	82.0	83.2	106.6	108.0	118.8
C33	126.9	128.9	114.2	108.8	140.9	128.1	140.2	109.5	92.1	105.1	122.6	95.7	94.6
D	81.5	77.8	76.9	77.6	77.9	78.1	81.9	73.5	71.3	74.9	74.9	74.4	74.6
35	81.5	77.8	76.9	77.6	77.9	78.1	81.9	73.5	71.3	74.9	74.9	74.4	74.6

* Preliminary data.

...“ - Confidential data.

Table 4

Industrial Production Indices
(Working day adjusted, 2015 = 100)

NACE.BG - 2008	2017	2018	2019				2020								
	IX	IX	IX	X	XI	XII	I	II	III	IV	V	VI	VII	VIII	IX*
B_TO_E36	107.0	106.0	106.2	112.1	114.0	107.9	103.1	105.2	104.9	86.7	87.8	100.0	103.5	96.7	103.5
B	113.5	101.9	110.3	121.3	111.5	116.5	102.6	105.5	106.9	97.5	93.0	106.3	97.5	105.7	107.7
B05	102.3	75.1	92.6	100.7	85.0	93.6	81.7	87.8	73.6	64.5	45.2	52.8	56.2	67.8	65.4
B06
B07	126.6	124.3	125.4	144.0	134.4	143.5	127.7	128.7	139.0	132.2	135.5	152.7	132.0	133.8	141.1
B08	91.7	120.8	117.3	119.6	120.6	99.7	86.6	82.2	100.9	87.7	90.3	112.5	107.3	117.8	116.4
B09
C	112.7	114.6	114.4	122.1	123.2	109.7	104.9	110.7	108.6	91.2	95.1	108.1	112.3	102.4	112.2
C10	111.7	110.8	115.1	125.2	116.8	114.7	103.1	100.5	113.9	95.1	101.7	113.8	108.0	100.5	111.1
C11	108.8	117.6	117.0	98.1	92.2	96.8	75.7	81.0	89.3	75.2	98.2	118.8	121.9	123.7	116.2
C12	67.3	51.0	48.7	57.0	56.0	43.0	25.3	24.8	37.4	44.2	36.3	38.5	39.7	32.7	32.6
C13	97.6	91.2	97.1	101.2	104.1	85.3	96.7	100.7	99.9	82.4	106.9	104.5	99.7	76.7	93.3
C14	95.0	87.2	83.1	82.9	83.8	76.2	82.6	79.9	66.2	62.0	78.2	75.0	85.8	69.2	70.7
C15	94.5	94.0	95.4	99.9	111.2	79.5	92.7	86.6	65.0	59.3	68.8	88.8	91.5	55.6	69.7
C16	87.9	83.1	83.0	86.2	85.0	79.3	70.5	70.4	69.7	56.8	61.2	74.7	76.4	72.3	78.3
C17	102.3	101.7	94.5	102.8	96.3	92.0	93.6	96.3	101.4	89.9	89.1	93.1	86.5	85.0	85.0
C18	99.3	100.9	109.7	121.0	140.7	109.9	98.9	105.9	100.4	79.9	88.8	94.8	100.3	95.4	99.7
C19
C20	121.4	110.2	114.2	119.8	113.9	116.2	109.7	116.5	132.5	114.4	109.2	118.6	118.2	112.1	110.7
C21	104.6	132.9	107.4	108.1	134.4	109.5	111.5	99.2	136.8	131.0	118.7	126.4	114.5	97.8	110.9
C22	129.3	135.9	135.2	151.0	149.5	120.3	123.5	131.0	139.9	116.0	118.0	130.7	149.8	135.1	150.8
C23	110.3	112.7	118.1	125.8	122.9	110.3	87.5	96.8	104.4	87.8	95.5	107.9	126.2	113.0	119.8
C24	119.5	104.7	96.4	123.4	121.0	100.0	119.2	112.1	114.5	102.7	107.4	117.6	114.3	110.9	110.9
C25	133.9	119.3	120.1	120.3	128.8	113.2	92.1	125.6	119.9	97.7	105.2	114.2	109.7	102.1	129.8
C26	113.3	149.4	154.6	165.5	168.7	189.6	143.3	153.7	143.1	137.9	136.4	147.7	150.0	129.3	142.5
C27	112.8	122.3	128.7	132.5	141.6	106.4	115.5	130.2	125.9	107.6	103.1	128.3	135.1	118.5	137.9
C28	115.9	119.9	115.5	127.3	124.3	102.0	105.1	109.7	106.0	80.9	75.6	91.1	99.5	86.4	107.7
C29	124.1	146.0	151.8	158.3	156.7	114.2	157.0	155.4	126.6	40.0	58.1	107.7	115.5	131.6	151.7
C30	90.9	106.1	133.7	163.0	190.8	153.3	182.2	204.9	193.7	176.2	168.4	168.1	153.8	164.2	159.5
C31	103.8	112.2	102.2	108.8	112.4	99.2	91.3	95.8	80.9	64.7	81.3	106.5	108.9	105.9	111.0
C32	144.4	137.5	137.3	173.6	199.7	163.3	161.3	182.7	81.3	73.2	81.3	93.9	108.6	106.6	124.3
C33	110.5	138.5	133.1	133.5	128.1	146.1	102.2	109.1	138.7	97.8	83.9	107.4	126.8	92.8	98.2
D	83.0	73.6	71.7	70.0	81.0	97.1	97.7	85.0	91.8	65.2	57.3	65.0	69.8	69.0	66.6
D35	83.0	73.6	71.7	70.0	81.0	97.1	97.7	85.0	91.8	65.2	57.3	65.0	69.8	69.0	66.6

* Preliminary data.

„..“ - Confidential data.