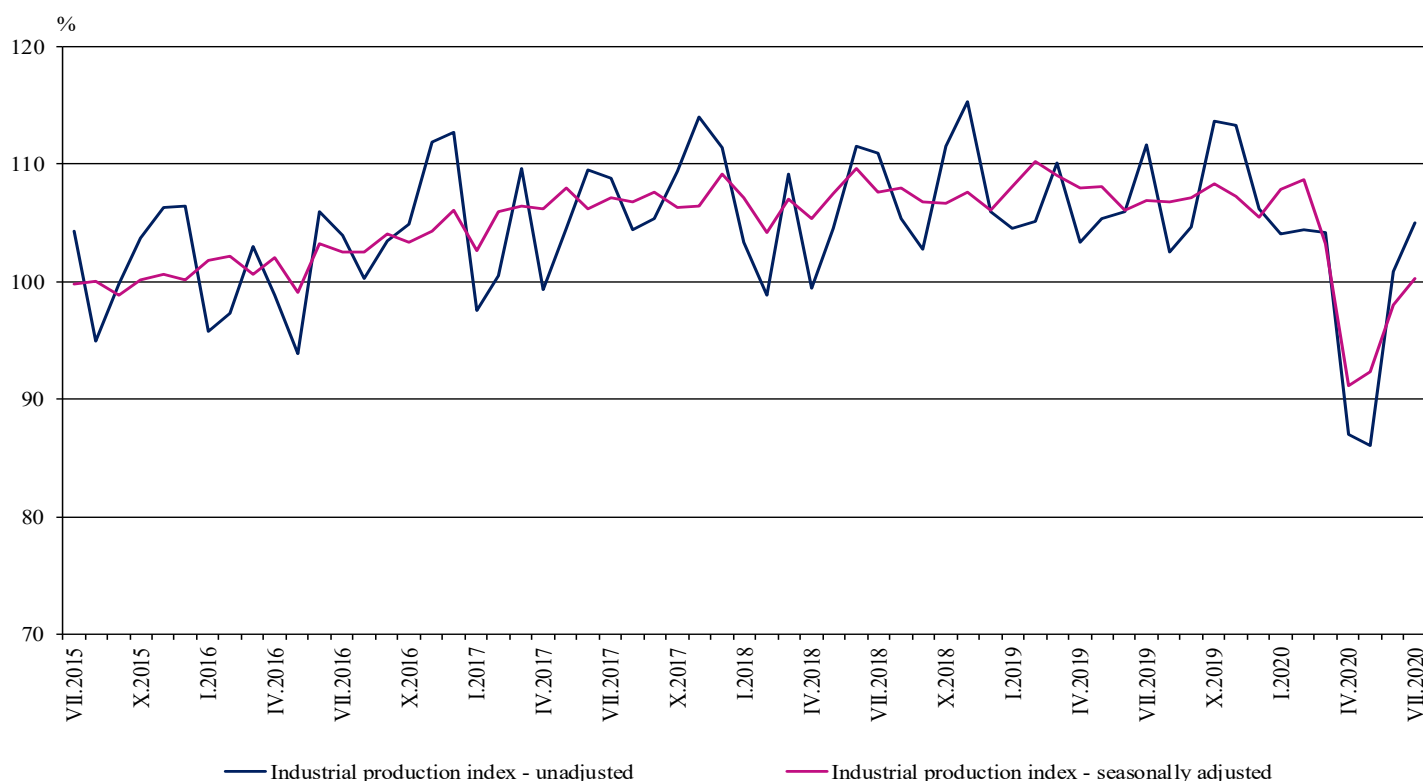


INDUSTRIAL PRODUCTION INDICES IN JULY 2020¹

According to the preliminary data in July 2020 the Industrial Production Index², seasonally adjusted³, increased by 2.3% as compared to June 2020.

In July 2020 the working day adjusted⁴ Industrial Production Index fell by 6.0% in comparison with the same month of 2019.

Figure 1. Industrial Production Indices (2015 = 100)



¹ July 2020 data are preliminary. The final data on Industrial Production and Turnover Indices for June 2020 can be found on the NSI website: <http://www.nsi.bg/en>.

² Monthly Industrial Production and Industrial turnover indices measure changes in production and turnover values of industrial enterprises. This information can be used to assess the current economic development and for short-term forecasts. Indices do not measure the actual production level, it aims to measure the average change in value of production between two points of time. Indices are compiled on the base of information collected through representative sampling survey on industrial enterprises. The sample covers enterprises with annual turnover more than 97% of total turnover in industry.

Industrial production indices are calculated at constant base year that is to say they are weighted with the structure of the value added at factor costs in the base year.

³ Seasonal adjustment is a statistical method, which eliminates the seasonal component of time series.

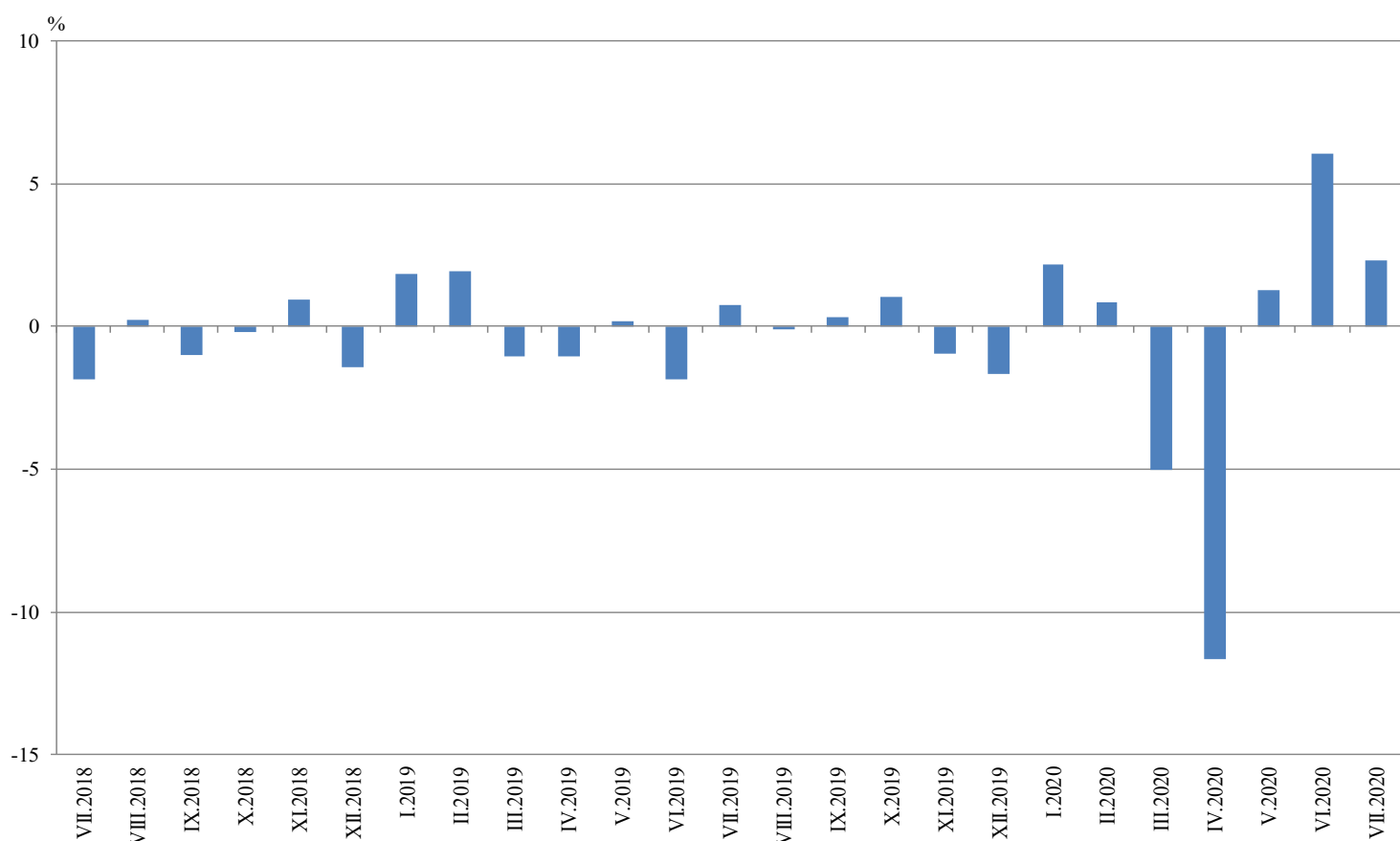
⁴ Working day adjustment is an adjustment for variations caused by calendar effects, different number of calendar and working days in the months, national holidays and outliers (for example the presence of more non-working days in May could contribute to the decline in the production in some activities).

Monthly changes

In July 2020 as compared to June 2020, the seasonally adjusted Industrial Production Index rose in the manufacturing by 3.6%, while the production went down in the mining and quarrying industry by 9.3% and in the electricity, gas, steam and air conditioning supply by 0.1%.

The most significant production increases in the manufacturing were registered in the other manufacturing by 32.0%, in the repair and installation of machinery and equipment by 18.1%, manufacture of motor vehicles, trailers and semi-trailers by 17.5%, in the manufacture of other non-metallic mineral products by 15.2%. Important decreases were seen in the manufacture of paper and paper products by 5.0%, in the manufacture of basic pharmaceutical products and pharmaceutical preparations by 4.4%.

**Figure 2. Changes of Industrial Production Indices compared to the previous month
(Seasonally adjusted)**

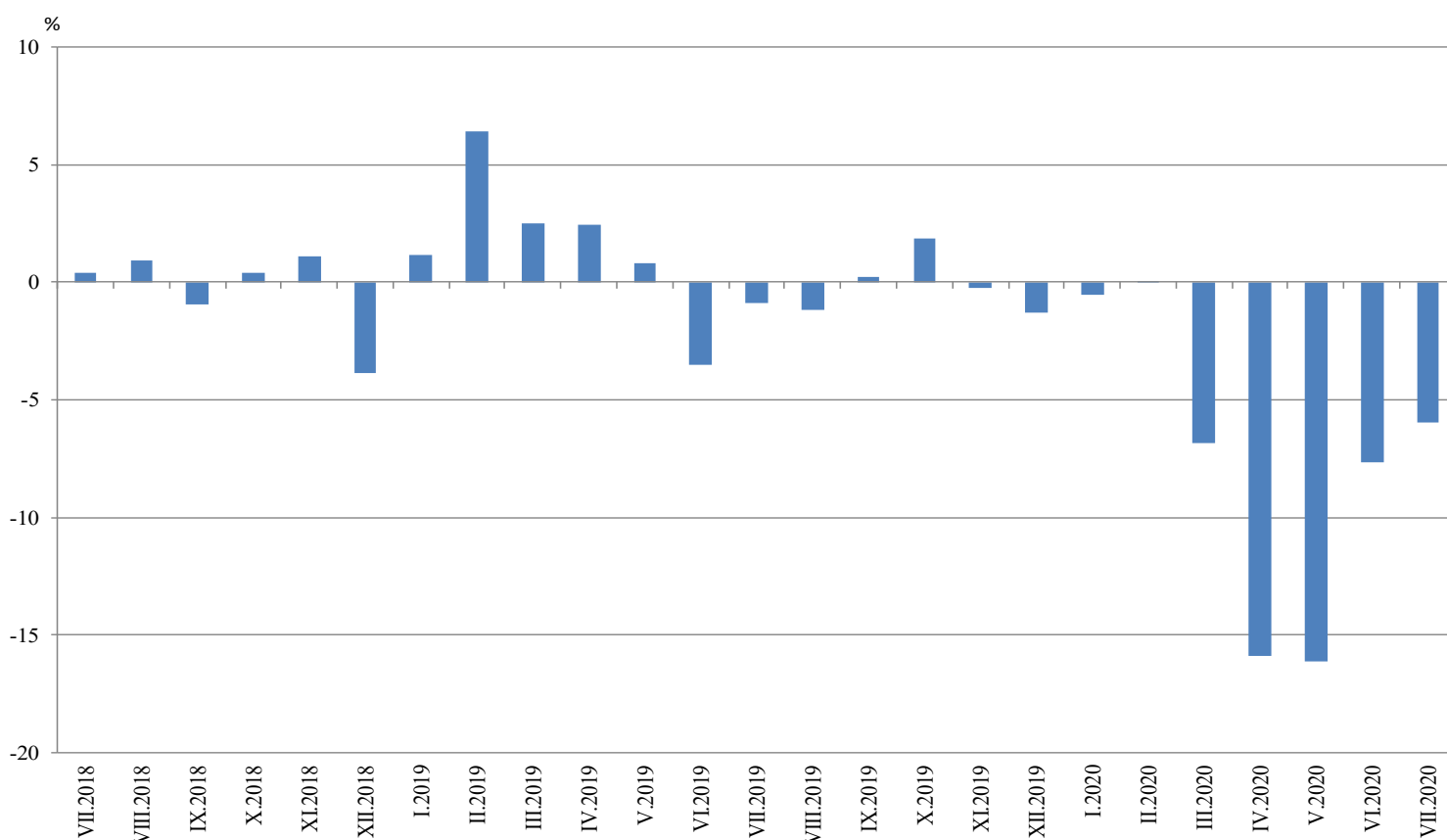


Annual changes

On annual basis in July 2020 Industrial Production Index calculated from working day adjusted data fell in the electricity, gas, steam and air conditioning supply by 9.9%, in the manufacturing by 5.7% and in the mining and quarrying industry by 3.1%.

In the manufacturing, the more considerable decreases compared to the same month of the previous year were registered in the other manufacturing by 32.2%, in the manufacture of tobacco products by 28.0%, in the manufacture of machinery and equipment n.e.c by 19.2%, in the manufacture of motor vehicles, trailers and semi-trailers by 16.3%. Major increases were seen in the manufacture of other non-metallic mineral products by 7.6%, in the manufacture of electrical equipment by 7.2%, in the manufacture of rubber and plastic products by 6.4%, in the manufacture of other transport equipment by 4.7%.

Figure 3. Changes of Industrial Production Indices compared to the same month of the previous year (Working day adjusted)



Annex

Table 1

Changes of Industrial Production Indices compared to the previous month¹

(Per cent)

Economic activities	NACE.BG - 2008	2020					
		II	III	IV	V	VI	VII*
Industry	B_TO_E36	0.8	-5.0	-11.7	1.3	6.1	2.3
Mining and quarrying	B	7.0	0.9	-5.6	-5.6	10.2	-9.3
Mining of coal and lignite	B05	28.8	-1.4	-0.6	-25.0	14.1	-10.7
Extraction of crude petroleum and natural gas	B06
Mining of metal ores	B07	0.8	8.0	-4.9	2.5	12.7	-13.5
Other mining and quarrying	B08	-17.9	2.6	-18.3	-2.2	17.2	-3.7
Mining support service activities	B09
Manufacturing	C	-1.4	-6.9	-13.2	2.5	6.2	3.6
Manufacture of food products	C10	-3.6	-0.7	-12.2	3.0	6.2	-3.3
Manufacture of beverages	C11	-5.8	-14.9	-14.1	13.6	4.5	1.9
Manufacture of tobacco products	C12	0.1	2.5	3.6	-18.4	14.8	-1.1
Manufacture of textiles	C13	-7.4	-12.9	-9.4	18.7	-2.0	1.1
Manufacture of wearing apparel	C14	-0.6	-13.8	1.5	25.3	-19.0	4.3
Manufacture of leather and related products	C15	-6.5	-28.6	7.0	12.7	8.7	1.9
Manufacture of wood and of products of wood and cork, except furniture; manufacture of articles of straw and plaiting materials	C16	-7.8	-9.8	-19.5	6.1	14.1	1.6
Manufacture of paper and paper products	C17	3.9	-0.9	-6.5	-3.0	2.5	-5.0
Printing and reproduction of recorded media	C18	1.4	-12.4	-14.5	5.8	3.8	6.7
Manufacture of coke and refined petroleum products	C19
Manufacture of chemicals and chemical products	C20	4.7	-1.5	-8.5	-2.0	4.6	0.7
Manufacture of basic pharmaceutical products and pharmaceutical preparations	C21	-6.8	17.2	3.7	-6.8	-0.8	-4.4
Manufacture of rubber and plastic products	C22	0.9	-5.4	-9.8	0.0	4.9	10.0
Manufacture of other non-metallic mineral products	C23	-3.6	-12.4	-12.9	-0.7	12.5	15.2
Manufacture of basic metals	C24	-0.3	-3.7	-2.6	5.8	2.9	-2.9
Manufacture of fabricated metal products, except machinery and equipment	C25	9.6	-14.3	-13.7	8.0	-3.1	-3.4
Manufacture of computer, electronic and optical products	C26	4.3	-15.3	3.2	0.3	-1.4	4.3
Manufacture of electrical equipment	C27	5.1	-9.5	-7.9	-1.4	11.7	5.9
Manufacture of machinery and equipment n.e.c.	C28	-2.7	-9.7	-22.9	-2.8	12.6	9.8
Manufacture of motor vehicles, trailers and semi-trailers	C29	-0.8	-19.4	-68.1	48.2	57.2	17.5
Manufacture of other transport equipment	C30	3.7	-12.9	7.4	-9.2	4.0	0.6
Manufacture of furniture	C31	-0.3	-25.5	-11.7	16.7	24.4	3.1
Other manufacturing	C32	14.1	-60.6	-3.4	7.5	1.5	32.0
Repair and installation of machinery and equipment	C33	-9.1	9.4	-21.9	-15.9	14.2	18.1
Electricity, gas, steam and air conditioning supply	D	0.2	4.9	-10.2	-3.1	5.1	-0.1
Electricity, gas, steam and air conditioning supply	D35	0.2	4.9	-10.2	-3.1	5.1	-0.1

¹ Seasonally adjusted.

* Preliminary data.

„..“ - Confidential data.

Table 2

Changes of Industrial Production Indices compared to the same month of the previous year¹
(Per cent)

Economic activities	NACE.BG - 2008	2020					
		II	III	IV	V	VI	VII*
Industry	B_TO_E36	0.0	-6.8	-15.9	-16.1	-7.7	-6.0
Mining and quarrying	B	-1.1	12.2	8.8	-8.1	16.4	-3.1
Mining of coal and lignite	B05	-12.4	-7.4	12.0	-42.5	-7.1	-20.5
Extraction of crude petroleum and natural gas	B06
Mining of metal ores	B07	6.2	26.9	13.6	11.5	30.0	5.0
Other mining and quarrying	B08	-10.3	-2.8	-10.6	-16.5	9.5	-2.3
Mining support service activities	B09
Manufacturing	C	1.8	-9.7	-18.8	-16.9	-9.7	-5.7
Manufacture of food products	C10	5.2	8.0	-7.2	-6.0	4.2	-0.6
Manufacture of beverages	C11	7.4	-11.5	-26.6	-11.5	-7.3	-1.6
Manufacture of tobacco products	C12	13.6	-7.7	-6.7	-46.3	-6.9	-28.0
Manufacture of textiles	C13	11.0	-5.2	-10.2	8.0	-5.5	2.3
Manufacture of wearing apparel	C14	-5.4	-25.7	-19.6	1.9	-15.4	-11.9
Manufacture of leather and related products	C15	-10.2	-34.4	-33.0	-29.1	-9.5	-10.6
Manufacture of wood and of products of wood and cork, except furniture; manufacture of articles of straw and plaiting materials	C16	-1.5	-12.7	-24.3	-23.8	-2.7	-7.2
Manufacture of paper and paper products	C17	1.9	-2.6	-9.5	-16.1	-7.0	-15.2
Printing and reproduction of recorded media	C18	-5.5	-17.4	-33.5	-31.4	-23.2	-16.2
Manufacture of coke and refined petroleum products	C19
Manufacture of chemicals and chemical products	C20	4.0	0.0	-2.4	-10.6	-0.8	-1.4
Manufacture of basic pharmaceutical products and pharmaceutical preparations	C21	-10.5	7.1	19.0	4.2	1.6	-9.7
Manufacture of rubber and plastic products	C22	0.9	-6.0	-15.3	-13.9	-8.5	6.4
Manufacture of other non-metallic mineral products	C23	1.6	-13.4	-19.6	-19.1	-8.5	7.6
Manufacture of basic metals	C24	1.5	-5.6	-4.3	16.1	31.0	-1.6
Manufacture of fabricated metal products, except machinery and equipment	C25	3.5	-6.3	-13.9	-5.5	-14.1	-10.8
Manufacture of computer, electronic and optical products	C26	5.0	-7.4	-7.1	-2.4	-12.3	-4.8
Manufacture of electrical equipment	C27	4.9	-6.1	-18.2	-18.8	-2.8	7.2
Manufacture of machinery and equipment n.e.c.	C28	-7.1	-20.4	-37.4	-39.2	-29.4	-19.2
Manufacture of motor vehicles, trailers and semi-trailers	C29	4.8	-19.6	-73.9	-62.6	-26.0	-16.3
Manufacture of other transport equipment	C30	15.5	0.1	6.1	-0.1	18.1	4.7
Manufacture of furniture	C31	-0.9	-23.7	-31.5	-22.5	-2.3	-1.1
Other manufacturing	C32	24.8	-47.1	-44.2	-44.6	-46.1	-32.2
Repair and installation of machinery and equipment	C33	-12.7	11.9	-21.7	-29.7	-24.8	4.2
Electricity, gas, steam and air conditioning supply	D	-7.4	-0.4	-10.8	-15.6	-8.5	-9.9
Electricity, gas, steam and air conditioning supply	D35	-7.4	-0.4	-10.8	-15.6	-8.5	-9.9

¹ Working day adjusted.

* Preliminary data.

„..“ - Confidential data.

Table 3

Industrial Production Indices
(Seasonally adjusted, 2015 = 100)

NACE.BG - 2008	2019						2020						
	VII	VIII	IX	X	XI	XII	I	II	III	IV	V	VI	VII*
B_TO_E36	106.9	106.8	107.2	108.3	107.3	105.5	107.8	108.7	103.2	91.2	92.4	98.0	100.3
B	102.3	95.6	106.1	107.0	102.9	107.0	103.8	111.1	112.0	105.8	99.8	110.0	99.8
B05	78.3	76.9	87.1	78.4	71.8	74.8	66.2	85.3	84.1	83.6	62.7	71.5	63.9
B06
B07	125.8	106.9	125.4	144.0	134.4	143.5	127.7	128.7	139.0	132.2	135.5	152.7	132.0
B08	101.6	100.7	106.2	105.0	108.4	100.8	130.5	107.2	109.9	89.8	87.9	103.0	99.2
B09
C	113.0	113.9	113.9	116.0	115.8	113.3	118.1	116.5	108.5	94.2	96.6	102.6	106.3
C10	107.3	110.1	107.7	113.8	109.5	110.0	120.2	115.9	115.1	101.0	104.1	110.6	107.0
C11	101.9	107.2	105.5	108.3	103.8	99.2	118.6	111.7	95.1	81.7	92.8	97.0	98.8
C12	51.0	41.7	48.8	47.3	49.2	43.7	39.2	39.2	40.2	41.7	34.0	39.0	38.6
C13	93.1	92.5	100.8	98.3	99.4	98.1	110.8	102.6	89.3	80.9	96.0	94.1	95.1
C14	83.9	81.6	84.1	83.0	82.2	79.1	80.0	79.6	68.6	69.6	87.2	70.7	73.7
C15	89.1	84.6	91.4	94.9	104.6	89.8	92.8	86.8	61.9	66.2	74.7	81.2	82.7
C16	76.5	73.3	79.3	78.5	78.8	83.9	86.0	79.3	71.6	57.6	61.1	69.7	70.9
C17	99.6	96.8	95.9	98.1	96.2	96.6	95.1	98.9	97.9	91.6	88.9	91.1	86.5
C18	119.8	113.8	112.8	113.9	123.8	105.9	111.9	113.5	99.5	85.0	90.0	93.4	99.6
C19
C20	117.0	109.9	114.3	118.0	112.3	119.0	118.6	124.2	122.3	111.9	109.7	114.7	115.6
C21	124.6	111.8	108.1	110.4	122.0	107.7	114.8	107.0	125.4	130.0	121.2	120.3	115.0
C22	133.1	133.7	133.0	136.9	140.9	139.1	139.4	140.7	133.1	120.0	120.0	125.9	138.5
C23	108.9	108.4	110.2	112.4	115.2	122.5	123.0	118.5	103.8	90.4	89.7	101.0	116.4
C24	102.8	106.5	108.0	111.6	111.5	112.1	113.5	113.2	109.1	106.2	112.4	115.7	112.3
C25	115.0	128.2	117.2	117.7	117.2	101.6	125.8	137.9	118.2	102.1	110.2	106.8	103.3
C26	154.1	167.8	158.7	157.8	160.4	177.6	156.5	163.3	138.2	142.6	143.1	141.1	147.1
C27	123.3	128.3	126.4	121.6	127.8	121.5	126.2	132.6	120.0	110.6	109.0	121.8	128.9
C28	117.6	112.3	117.2	121.1	115.4	107.8	116.4	113.3	102.2	78.8	76.6	86.2	94.6
C29	146.5	148.8	151.5	150.6	149.6	128.0	152.9	151.7	122.2	39.1	57.9	90.9	106.9
C30	159.9	168.5	157.9	167.2	179.9	174.1	184.5	191.3	166.6	179.0	162.6	169.1	170.1
C31	106.2	102.4	99.8	101.0	102.5	98.5	105.7	105.4	78.5	69.4	81.0	100.7	103.9
C32	168.6	121.7	135.0	158.9	184.4	180.5	175.7	200.4	79.0	76.3	82.0	83.2	109.9
C33	120.4	126.8	126.9	128.9	114.2	108.8	140.9	128.1	140.2	109.5	92.1	105.1	124.1
D	82.9	82.3	81.5	77.8	76.9	77.6	77.9	78.1	81.9	73.5	71.3	74.9	74.8
35	82.9	82.3	81.5	77.8	76.9	77.6	77.9	78.1	81.9	73.5	71.3	74.9	74.8

* Preliminary data.

„..“ - Confidential data.

Table 4

Industrial Production Indices
(Working day adjusted, 2015 = 100)

NACE.BG - 2008	2017	2018	2019						2020						
	VII	VII	VII	VIII	IX	X	XI	XII	I	II	III	IV	V	VI	VII*
B_TO_E36	110.7	111.2	110.2	102.8	106.2	112.1	114.0	107.9	103.1	105.2	104.9	86.7	87.8	100.0	103.6
B	103.0	93.9	100.6	93.0	110.3	121.3	111.5	116.5	102.6	105.5	106.9	97.5	93.0	106.3	97.6
B05	85.8	75.1	70.7	72.6	92.6	100.7	85.0	93.6	81.7	87.8	73.6	64.5	45.2	52.8	56.2
B06
B07	118.0	114.6	125.8	106.9	125.4	144.0	134.4	143.5	127.7	128.7	139.0	132.2	135.5	152.7	132.0
B08	87.5	96.9	109.8	107.8	117.3	119.6	120.6	99.7	86.6	82.2	100.9	87.7	90.3	112.5	107.4
B09
C	117.9	121.0	119.3	109.9	114.4	122.1	123.2	109.7	104.9	110.7	108.6	91.2	95.1	108.1	112.5
C10	108.6	105.4	108.7	113.3	115.1	125.2	116.8	114.7	103.1	100.5	113.9	95.1	101.7	113.8	108.1
C11	128.3	121.9	125.6	135.0	117.0	98.1	92.2	96.8	75.7	81.0	89.3	75.2	98.2	118.8	123.6
C12	66.4	57.5	56.9	35.0	48.7	57.0	56.0	43.0	25.3	24.8	37.4	44.2	36.3	38.5	41.0
C13	102.3	104.8	97.2	73.1	97.1	101.2	104.1	85.3	96.7	100.7	99.9	82.4	106.9	104.5	99.5
C14	110.9	106.6	97.5	79.0	83.1	82.9	83.8	76.2	82.6	79.9	66.2	62.0	78.2	75.0	85.9
C15	100.8	112.7	102.6	75.1	95.4	99.9	111.2	79.5	92.7	86.6	65.0	59.3	68.8	88.8	91.7
C16	92.0	83.0	82.2	72.4	83.0	86.2	85.0	79.3	70.5	70.4	69.7	56.8	61.2	74.7	76.3
C17	102.9	106.7	101.8	94.7	94.5	102.8	96.3	92.0	93.6	96.3	101.4	89.9	89.1	93.1	86.3
C18	105.6	101.2	119.6	106.2	109.7	121.0	140.7	109.9	98.9	105.9	100.4	79.9	88.8	94.8	100.2
C19
C20	128.2	116.9	119.9	106.0	114.2	119.8	113.9	116.2	109.7	116.5	132.5	114.4	109.2	118.6	118.2
C21	107.4	113.0	127.2	99.5	107.4	108.1	134.4	109.5	111.5	99.2	136.8	131.0	118.7	126.4	114.8
C22	123.7	144.0	141.3	126.4	135.2	151.0	149.5	120.3	123.5	131.0	139.9	116.0	118.0	130.7	150.4
C23	108.4	113.2	117.1	113.4	118.1	125.8	122.9	110.3	87.5	96.8	104.4	87.8	95.5	107.9	126.0
C24	111.6	122.3	116.1	99.3	96.4	123.4	121.0	100.0	119.2	112.1	114.5	102.7	107.4	117.6	114.3
C25	168.6	157.3	123.8	128.2	120.1	120.3	128.8	113.2	92.1	125.6	119.9	97.7	105.2	114.2	110.5
C26	130.7	149.7	157.6	150.3	154.6	165.5	168.7	189.6	143.3	153.7	143.1	137.9	136.4	147.7	150.1
C27	110.1	118.0	126.0	115.9	128.7	132.5	141.6	106.4	115.5	130.2	125.9	107.6	103.1	128.3	135.1
C28	125.1	121.9	122.9	97.3	115.5	127.3	124.3	102.0	105.1	109.7	106.0	80.9	75.6	91.1	99.3
C29	116.0	135.1	140.4	123.8	151.8	158.3	156.7	114.2	157.0	155.4	126.6	40.0	58.1	107.7	117.6
C30	86.9	115.7	146.9	135.9	133.7	163.0	190.8	153.3	182.2	204.9	193.7	176.2	168.4	168.1	153.8
C31	104.5	114.3	110.3	100.4	102.2	108.8	112.4	99.2	91.3	95.8	80.9	64.7	81.3	106.5	109.0
C32	114.1	132.0	167.4	118.0	137.3	173.6	199.7	163.3	161.3	182.7	81.3	73.2	81.3	93.9	113.5
C33	123.9	127.8	122.6	124.4	133.1	133.5	128.1	146.1	102.2	109.1	138.7	97.8	83.9	107.4	127.8
D	89.1	79.1	77.2	76.4	71.7	70.0	81.0	97.1	97.7	85.0	91.8	65.2	57.3	65.0	69.6
D35	89.1	79.1	77.2	76.4	71.7	70.0	81.0	97.1	97.7	85.0	91.8	65.2	57.3	65.0	69.6

* Preliminary data.

„..“ - Confidential data.