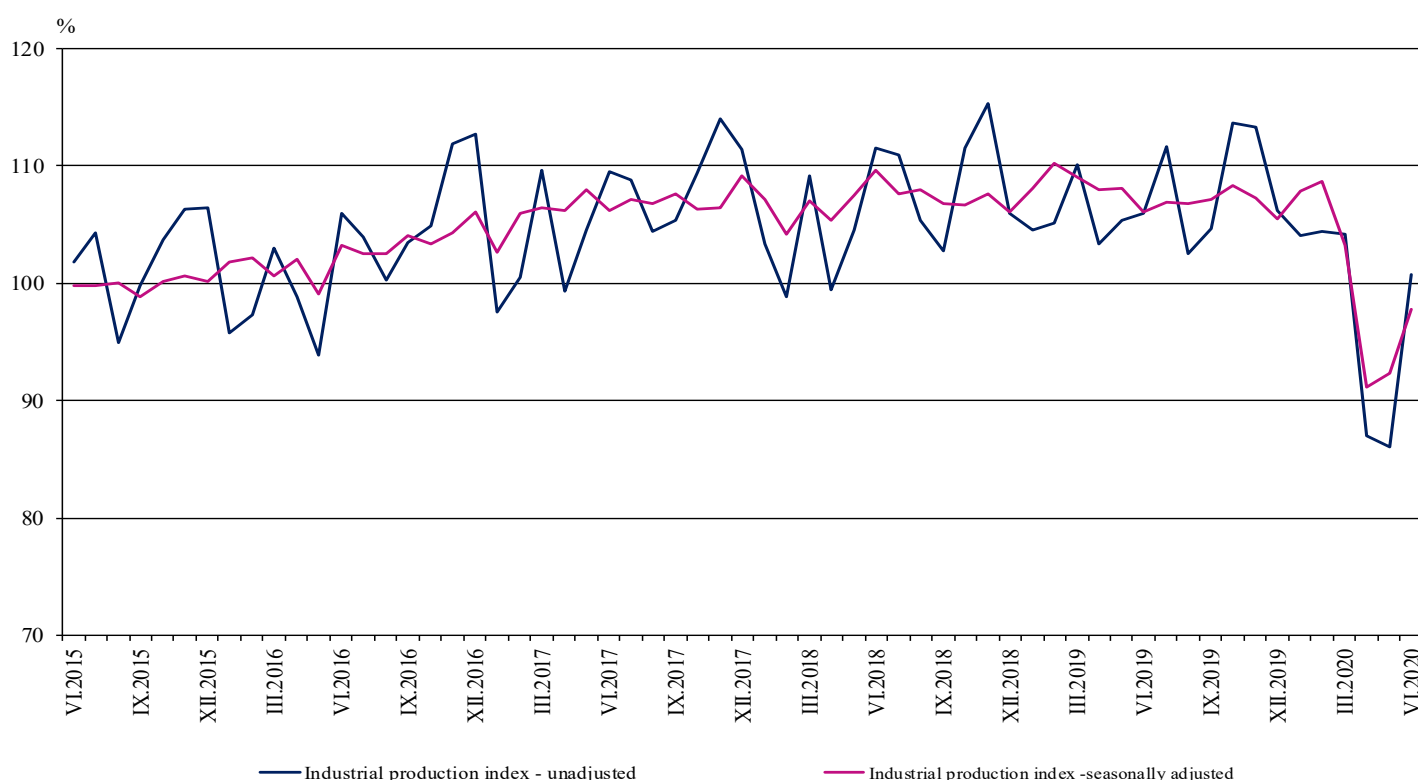


INDUSTRIAL PRODUCTION INDICES IN JUNE 2020¹

According to the preliminary data in June 2020 the Industrial Production Index², seasonally adjusted³, increased by 5.8% as compared to May 2020.

In June 2020 the working day adjusted⁴ Industrial Production Index fell by 7.7% in comparison with the same month of 2019.

Figure 1. Industrial Production Indices (2015 = 100)



¹ June 2020 data are preliminary. The final data on Industrial Production and Turnover Indices for May 2020 can be found on the NSI website: <http://www.nsi.bg/en>.

² Monthly Industrial Production and Industrial turnover indices measure changes in production and turnover values of industrial enterprises. This information can be used to assess the current economic development and for short-term forecasts. Indices do not measure the actual production level, it aims to measure the average change in value of production between two points of time. Indices are compiled on the base of information collected through representative sampling survey on industrial enterprises. The sample covers enterprises with annual turnover more than 97% of total turnover in industry.

Industrial production indices are calculated at constant base year that is to say they are weighted with the structure of the value added at factor costs in the base year.

³ Seasonal adjustment is a statistical method, which eliminates the seasonal component of time series.

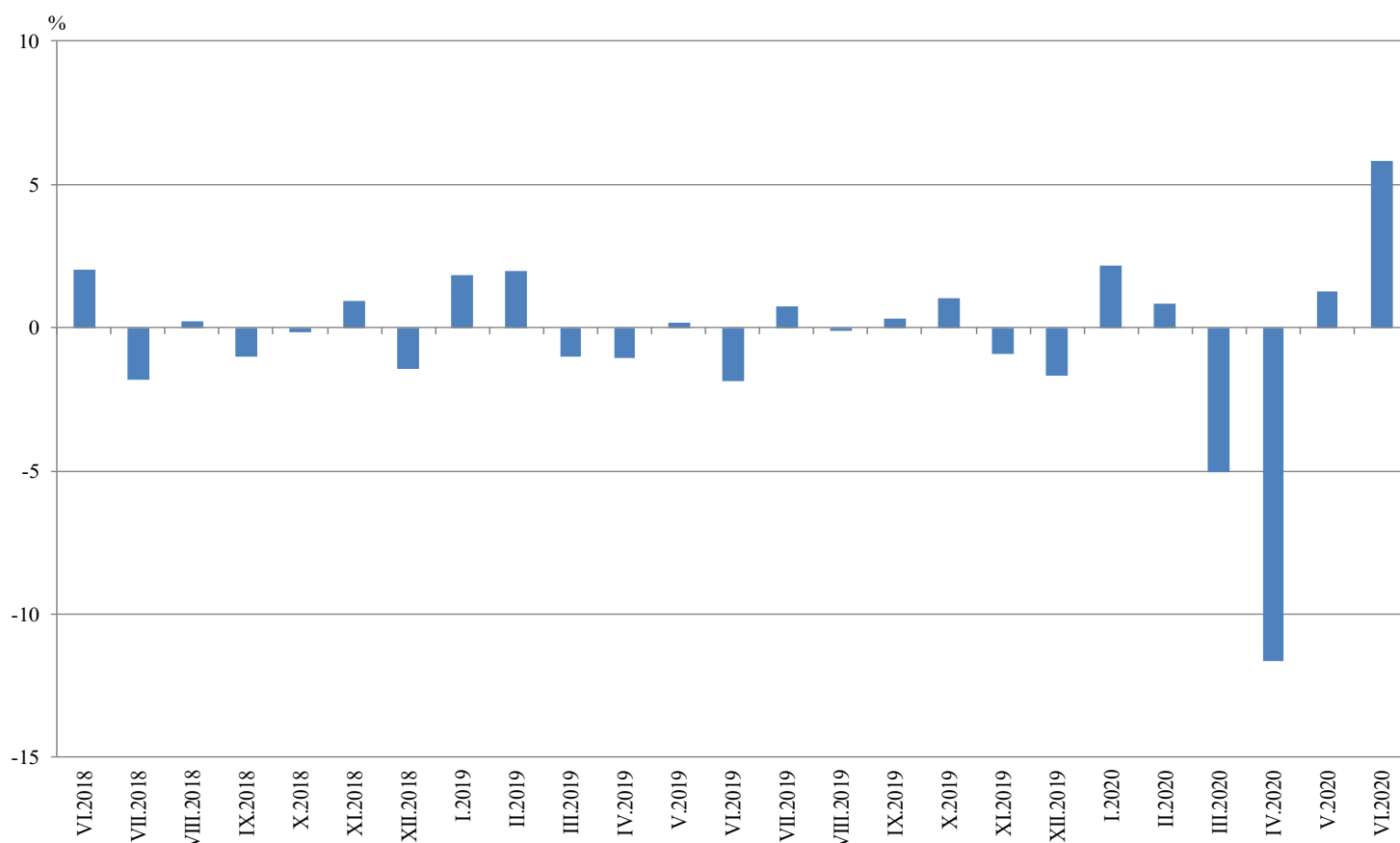
⁴ Working day adjustment is an adjustment for variations caused by calendar effects, different number of calendar and working days in the months, national holidays and outliers (for example the presence of more non-working days in May could contribute to the decline in the production in some activities).

Monthly changes

In June 2020 as compared to May 2020, the seasonally adjusted Industrial Production Index went up in the mining and quarrying industry by 9.1%, in the manufacturing by 6.0% and in the electricity, gas, steam and air conditioning supply by 5.2%.

The most significant production increases in the manufacturing were registered in the manufacture of motor vehicles, trailers and semi-trailers by 73.2%, in the manufacture of furniture by 24.0%, in the manufacture of tobacco products by 15.9%, in the manufacture of wood and of products of wood and cork, except furniture; manufacture of articles of straw and plaiting materials by 14.8%. Important decreases were seen in the manufacture of wearing apparel by 19.5%, in the manufacture of fabricated metal products, except machinery and equipment by 5.0%.

**Figure 2. Changes of Industrial Production Indices compared to the previous month
(Seasonally adjusted)**

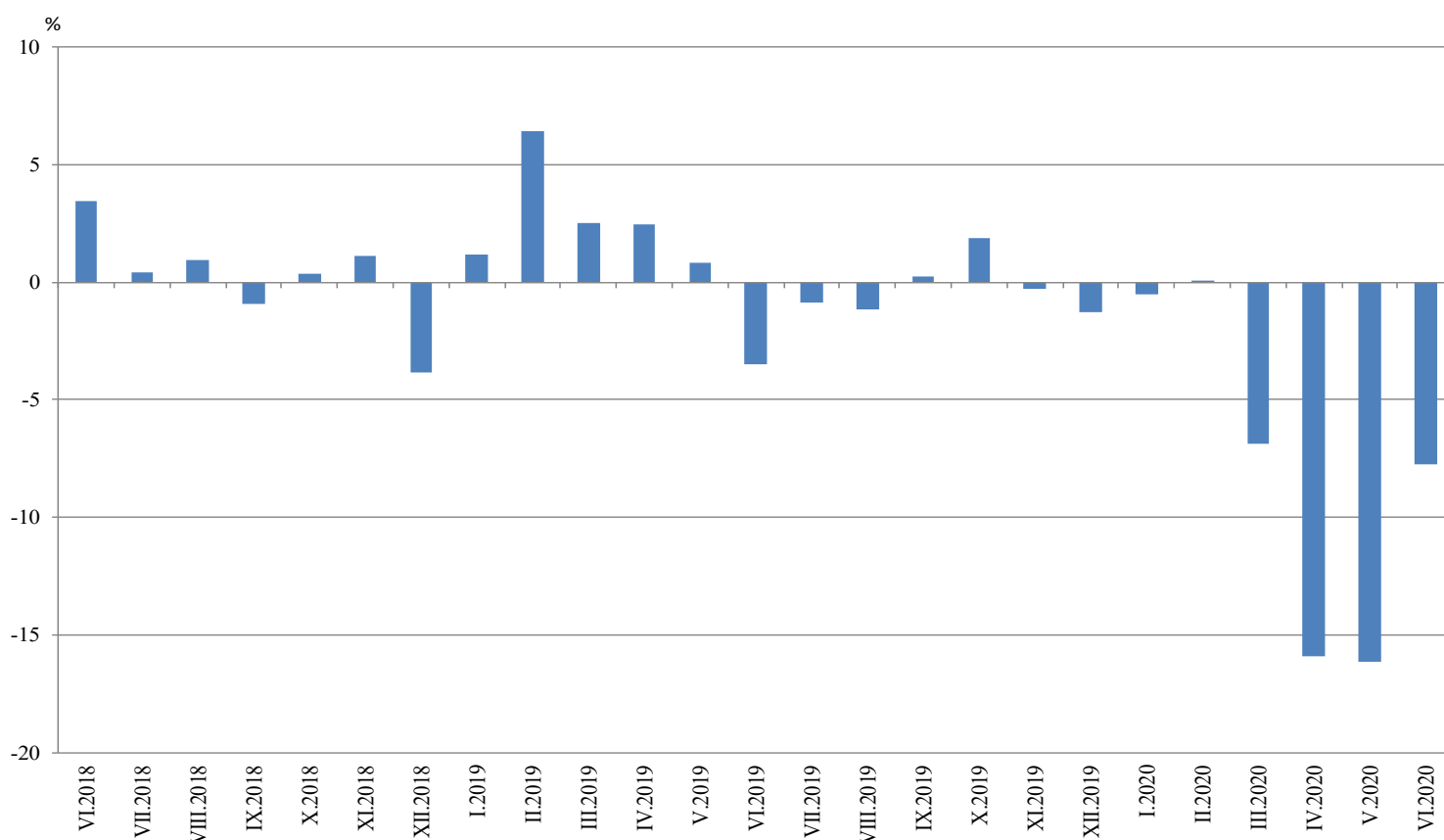


Annual changes

On annual basis in June 2020 Industrial Production Index calculated from working day adjusted data went down in the manufacturing by 9.7% and in the electricity, gas, steam and air conditioning supply by 8.5%, while the production rose in the mining and quarrying industry by 14.9%.

In the manufacturing, the more considerable decreases compared to the same month of the previous year were registered in the other manufacturing by 43.5%, in the manufacture of machinery and equipment n.e.c by 29.9%, in the repair and installation of machinery and equipment by 25.9%, in the manufacture of motor vehicles, trailers and semi-trailers by 25.1%. Major increases were seen in the manufacture of basic metals by 31.1%, in the manufacture of other transport equipment by 18.8%, in the manufacture of basic pharmaceutical products and pharmaceutical preparations by 6.0%.

Figure 3. Changes of Industrial Production Indices compared to the same month of the previous year (Working day adjusted)



Annex

Table 1

Changes of Industrial Production Indices compared to the previous month¹

(Per cent)

Economic activities	NACE.BG - 2008	2020					
		I	II	III	IV	V	VI*
Industry	B_TO_E36	2.2	0.8	-5.0	-11.7	1.3	5.8
Mining and quarrying	B	-3.0	7.0	0.9	-5.6	-5.6	9.1
Mining of coal and lignite	B05	-11.5	28.8	-1.4	-0.6	-25.0	14.9
Extraction of crude petroleum and natural gas	B06
Mining of metal ores	B07	-11.0	0.8	8.0	-4.9	2.5	12.3
Other mining and quarrying	B08	29.5	-17.9	2.6	-18.3	-2.2	9.6
Mining support service activities	B09
Manufacturing	C	4.2	-1.4	-6.9	-13.2	2.5	6.0
Manufacture of food products	C10	9.3	-3.6	-0.7	-12.2	3.0	5.7
Manufacture of beverages	C11	19.5	-5.8	-14.9	-14.1	13.6	3.8
Manufacture of tobacco products	C12	-10.3	0.1	2.5	3.6	-18.4	15.9
Manufacture of textiles	C13	13.0	-7.4	-12.9	-9.4	18.7	-2.6
Manufacture of wearing apparel	C14	1.2	-0.6	-13.8	1.5	25.3	-19.5
Manufacture of leather and related products	C15	3.4	-6.5	-28.6	7.0	12.7	9.2
Manufacture of wood and of products of wood and cork, except furniture; manufacture of articles of straw and plaiting materials	C16	2.5	-7.8	-9.8	-19.5	6.1	14.8
Manufacture of paper and paper products	C17	-1.6	3.9	-0.9	-6.5	-3.0	4.2
Printing and reproduction of recorded media	C18	5.8	1.4	-12.4	-14.5	5.8	2.9
Manufacture of coke and refined petroleum products	C19
Manufacture of chemicals and chemical products	C20	-0.4	4.7	-1.5	-8.5	-2.0	5.1
Manufacture of basic pharmaceutical products and pharmaceutical preparations	C21	6.6	-6.8	17.2	3.7	-6.8	2.6
Manufacture of rubber and plastic products	C22	0.2	0.9	-5.4	-9.8	0.0	3.5
Manufacture of other non-metallic mineral products	C23	0.4	-3.6	-12.4	-12.9	-0.7	11.4
Manufacture of basic metals	C24	1.3	-0.3	-3.7	-2.6	5.8	4.1
Manufacture of fabricated metal products, except machinery and equipment	C25	23.8	9.6	-14.3	-13.7	8.0	-5.0
Manufacture of computer, electronic and optical products	C26	-11.9	4.3	-15.3	3.2	0.3	-0.6
Manufacture of electrical equipment	C27	3.9	5.1	-9.5	-7.9	-1.4	10.4
Manufacture of machinery and equipment n.e.c.	C28	7.9	-2.7	-9.7	-22.9	-2.8	9.0
Manufacture of motor vehicles, trailers and semi-trailers	C29	19.5	-0.8	-19.4	-68.1	48.2	73.2
Manufacture of other transport equipment	C30	5.9	3.7	-12.9	7.4	-9.2	6.3
Manufacture of furniture	C31	7.3	-0.3	-25.5	-11.7	16.7	24.0
Other manufacturing	C32	-2.7	14.1	-60.6	-3.4	7.5	4.5
Repair and installation of machinery and equipment	C33	29.5	-9.1	9.4	-21.9	-15.9	12.7
Electricity, gas, steam and air conditioning supply	D	0.4	0.2	4.9	-10.2	-3.1	5.2
Electricity, gas, steam and air conditioning supply	D35	0.4	0.2	4.9	-10.2	-3.1	5.2

¹ Seasonally adjusted.

* Preliminary data.

„..“ - Confidential data.

Table 2

Changes of Industrial Production Indices compared to the same month of the previous year¹
(Per cent)

Economic activities	NACE.BG - 2008	2020					
		I	II	III	IV	V	VI*
Industry	B_TO_E36	-0.5	0.0	-6.8	-15.9	-16.1	-7.7
Mining and quarrying	B	-11.3	-1.1	12.2	8.8	-8.1	14.9
Mining of coal and lignite	B05	-36.7	-12.4	-7.4	12.0	-42.5	-6.6
Extraction of crude petroleum and natural gas	B06
Mining of metal ores	B07	3.8	6.2	26.9	13.6	11.5	29.6
Other mining and quarrying	B08	14.4	-10.3	-2.8	-10.6	-16.5	1.5
Mining support service activities	B09
Manufacturing	C	2.5	1.8	-9.7	-18.8	-16.9	-9.7
Manufacture of food products	C10	5.7	5.2	8.0	-7.2	-6.0	3.5
Manufacture of beverages	C11	19.3	7.4	-11.5	-26.6	-11.5	-7.4
Manufacture of tobacco products	C12	31.4	13.6	-7.7	-6.7	-46.3	-7.2
Manufacture of textiles	C13	9.6	11.0	-5.2	-10.2	8.0	-6.0
Manufacture of wearing apparel	C14	-9.5	-5.4	-25.7	-19.6	1.9	-15.3
Manufacture of leather and related products	C15	0.2	-10.2	-34.4	-33.0	-29.1	-9.5
Manufacture of wood and of products of wood and cork, except furniture; manufacture of articles of straw and plaiting materials	C16	8.3	-1.5	-12.7	-24.3	-23.8	-1.9
Manufacture of paper and paper products	C17	-8.7	1.9	-2.6	-9.5	-16.1	-5.8
Printing and reproduction of recorded media	C18	-0.6	-5.5	-17.4	-33.5	-31.4	-23.7
Manufacture of coke and refined petroleum products	C19
Manufacture of chemicals and chemical products	C20	-0.5	4.0	0.0	-2.4	-10.6	-0.3
Manufacture of basic pharmaceutical products and pharmaceutical preparations	C21	-0.1	-10.5	7.1	19.0	4.2	6.0
Manufacture of rubber and plastic products	C22	0.8	0.9	-6.0	-15.3	-13.9	-8.3
Manufacture of other non-metallic mineral products	C23	1.5	1.6	-13.4	-19.6	-19.1	-8.9
Manufacture of basic metals	C24	9.4	1.5	-5.6	-4.3	16.1	31.1
Manufacture of fabricated metal products, except machinery and equipment	C25	4.0	3.5	-6.3	-13.9	-5.5	-15.9
Manufacture of computer, electronic and optical products	C26	8.1	5.0	-7.4	-7.1	-2.4	-11.5
Manufacture of electrical equipment	C27	-1.2	4.9	-6.1	-18.2	-18.8	-2.7
Manufacture of machinery and equipment n.e.c.	C28	-8.7	-7.1	-20.4	-37.4	-39.2	-29.9
Manufacture of motor vehicles, trailers and semi-trailers	C29	13.3	4.8	-19.6	-73.9	-62.6	-25.1
Manufacture of other transport equipment	C30	24.1	15.5	0.1	6.1	-0.1	18.8
Manufacture of furniture	C31	0.0	-0.9	-23.7	-31.5	-22.5	-2.5
Other manufacturing	C32	6.7	24.8	-47.1	-44.2	-44.6	-43.5
Repair and installation of machinery and equipment	C33	1.9	-12.7	11.9	-21.7	-29.7	-25.9
Electricity, gas, steam and air conditioning supply	D	-7.5	-7.4	-0.4	-10.8	-15.6	-8.5
Electricity, gas, steam and air conditioning supply	D35	-7.5	-7.4	-0.4	-10.8	-15.6	-8.5

¹ Working day adjusted.

* Preliminary data.

„..“ - Confidential data.

Table 3

Industrial Production Indices
(Seasonally adjusted, 2015 = 100)

NACE.BG - 2008	2019							2020					
	VI	VII	VIII	IX	X	XI	XII	I	II	III	IV	V	VI*
B_TO_E36	106.1	106.9	106.8	107.2	108.3	107.3	105.5	107.8	108.7	103.2	91.2	92.4	97.8
B	95.0	102.3	95.6	106.1	107.0	102.9	107.0	103.8	111.1	112.0	105.8	99.8	108.9
B05	75.4	78.3	76.9	87.1	78.4	71.8	74.8	66.2	85.3	84.1	83.6	62.7	72.0
B06
B07	117.4	125.8	106.9	125.4	144.0	134.4	143.5	127.7	128.7	139.0	132.2	135.5	152.1
B08	94.2	101.6	100.7	106.2	105.0	108.4	100.8	130.5	107.2	109.9	89.8	87.9	96.3
B09
C	113.2	113.0	113.9	113.9	116.0	115.8	113.3	118.1	116.5	108.5	94.2	96.6	102.4
C10	106.3	107.3	110.1	107.7	113.8	109.5	110.0	120.2	115.9	115.1	101.0	104.1	110.0
C11	104.6	101.9	107.2	105.5	108.3	103.8	99.2	118.6	111.7	95.1	81.7	92.8	96.4
C12	38.9	51.0	41.7	48.8	47.3	49.2	43.7	39.2	39.2	40.2	41.7	34.0	39.4
C13	99.4	93.1	92.5	100.8	98.3	99.4	98.1	110.8	102.6	89.3	80.9	96.0	93.5
C14	82.5	83.9	81.6	84.1	83.0	82.2	79.1	80.0	79.6	68.6	69.6	87.2	70.2
C15	93.3	89.1	84.6	91.4	94.9	104.6	89.8	92.8	86.8	61.9	66.2	74.7	81.5
C16	72.1	76.5	73.3	79.3	78.5	78.8	83.9	86.0	79.3	71.6	57.6	61.1	70.2
C17	97.4	99.6	96.8	95.9	98.1	96.2	96.6	95.1	98.9	97.9	91.6	88.9	92.6
C18	120.1	119.8	113.8	112.8	113.9	123.8	105.9	111.9	113.5	99.5	85.0	90.0	92.6
C19
C20	115.5	117.0	109.9	114.3	118.0	112.3	119.0	118.6	124.2	122.3	111.9	109.7	115.2
C21	118.5	124.6	111.8	108.1	110.4	122.0	107.7	114.8	107.0	125.4	130.0	121.2	124.3
C22	134.0	133.1	133.7	133.0	136.9	140.9	139.1	139.4	140.7	133.1	120.0	120.0	124.3
C23	108.3	108.9	108.4	110.2	112.4	115.2	122.5	123.0	118.5	103.8	90.4	89.7	100.0
C24	98.5	102.8	106.5	108.0	111.6	111.5	112.1	113.5	113.2	109.1	106.2	112.4	117.1
C25	123.4	115.0	128.2	117.2	117.7	117.2	101.6	125.8	137.9	118.2	102.1	110.2	104.7
C26	158.7	154.1	167.8	158.7	157.8	160.4	177.6	156.5	163.3	138.2	142.6	143.1	142.2
C27	124.8	123.3	128.3	126.4	121.6	127.8	121.5	126.2	132.6	120.0	110.6	109.0	120.3
C28	120.5	117.6	112.3	117.2	121.1	115.4	107.8	116.4	113.3	102.2	78.8	76.6	83.4
C29	143.9	146.5	148.8	151.5	150.6	149.6	128.0	152.9	151.7	122.2	39.1	57.9	100.3
C30	142.7	159.9	168.5	157.9	167.2	179.9	174.1	184.5	191.3	166.6	179.0	162.6	172.8
C31	106.1	106.2	102.4	99.8	101.0	102.5	98.5	105.7	105.4	78.5	69.4	81.0	100.4
C32	153.0	168.6	121.7	135.0	158.9	184.4	180.5	175.7	200.4	79.0	76.3	82.0	85.7
C33	138.0	120.4	126.8	126.9	128.9	114.2	108.8	140.9	128.1	140.2	109.5	92.1	103.8
D	81.5	82.9	82.3	81.5	77.8	76.9	77.6	77.9	78.1	81.9	73.5	71.3	75.0
35	81.5	82.9	82.3	81.5	77.8	76.9	77.6	77.9	78.1	81.9	73.5	71.3	75.0

* Preliminary data.

„...“ - Confidential data.

Table 4

Industrial Production Indices
(Working day adjusted, 2015 = 100)

NACE.BG - 2008	2017	2018	2019						2020						
	VI	VI	VI	VII	VIII	IX	X	XI	XII	I	II	III	IV	V	VI*
B_TO_E36	108.5	112.2	108.3	110.2	102.8	106.2	112.1	114.0	107.9	103.1	105.2	104.9	86.7	87.8	99.9
B	102.2	111.5	91.3	100.6	93.0	110.3	121.3	111.5	116.5	102.6	105.5	106.9	97.5	93.0	104.9
B05	81.5	85.5	56.9	70.7	72.6	92.6	100.7	85.0	93.6	81.7	87.8	73.6	64.5	45.2	53.2
B06
B07	117.6	140.3	117.4	125.8	106.9	125.4	144.0	134.4	143.5	127.7	128.7	139.0	132.2	135.5	152.1
B08	95.8	115.7	102.8	109.8	107.8	117.3	119.6	120.6	99.7	86.6	82.2	100.9	87.7	90.3	104.3
B09
C	116.6	121.6	119.8	119.3	109.9	114.4	122.1	123.2	109.7	104.9	110.7	108.6	91.2	95.1	108.2
C10	113.6	106.4	109.2	108.7	113.3	115.1	125.2	116.8	114.7	103.1	100.5	113.9	95.1	101.7	113.0
C11	115.5	127.5	128.2	125.6	135.0	117.0	98.1	92.2	96.8	75.7	81.0	89.3	75.2	98.2	118.7
C12	84.2	79.4	41.3	56.9	35.0	48.7	57.0	56.0	43.0	25.3	24.8	37.4	44.2	36.3	38.4
C13	111.7	103.5	110.6	97.2	73.1	97.1	101.2	104.1	85.3	96.7	100.7	99.9	82.4	106.9	104.0
C14	106.7	98.9	88.7	97.5	79.0	83.1	82.9	83.8	76.2	82.6	79.9	66.2	62.0	78.2	75.1
C15	97.6	104.9	98.1	102.6	75.1	95.4	99.9	111.2	79.5	92.7	86.6	65.0	59.3	68.8	88.8
C16	96.3	84.8	76.9	82.2	72.4	83.0	86.2	85.0	79.3	70.5	70.4	69.7	56.8	61.2	75.4
C17	106.6	110.5	100.1	101.8	94.7	94.5	102.8	96.3	92.0	93.6	96.3	101.4	89.9	89.1	94.2
C18	103.7	106.9	123.5	119.6	106.2	109.7	121.0	140.7	109.9	98.9	105.9	100.4	79.9	88.8	94.3
C19
C20	116.3	122.6	119.6	119.9	106.0	114.2	119.8	113.9	116.2	109.7	116.5	132.5	114.4	109.2	119.2
C21	119.7	116.5	124.4	127.2	99.5	107.4	108.1	134.4	109.5	111.5	99.2	136.8	131.0	118.7	131.8
C22	126.1	141.2	142.9	141.3	126.4	135.2	151.0	149.5	120.3	123.5	131.0	139.9	116.0	118.0	131.0
C23	106.9	117.7	118.0	117.1	113.4	118.1	125.8	122.9	110.3	87.5	96.8	104.4	87.8	95.5	107.5
C24	118.1	112.7	89.8	116.1	99.3	96.4	123.4	121.0	100.0	119.2	112.1	114.5	102.7	107.4	117.7
C25	139.1	135.3	132.9	123.8	128.2	120.1	120.3	128.8	113.2	92.1	125.6	119.9	97.7	105.2	111.7
C26	137.0	152.0	168.4	157.6	150.3	154.6	165.5	168.7	189.6	143.3	153.7	143.1	137.9	136.4	149.0
C27	113.0	126.2	132.0	126.0	115.9	128.7	132.5	141.6	106.4	115.5	130.2	125.9	107.6	103.1	128.5
C28	123.5	125.4	129.1	122.9	97.3	115.5	127.3	124.3	102.0	105.1	109.7	106.0	80.9	75.6	90.5
C29	113.4	150.1	145.5	140.4	123.8	151.8	158.3	156.7	114.2	157.0	155.4	126.6	40.0	58.1	109.0
C30	107.2	143.3	142.4	146.9	135.9	133.7	163.0	190.8	153.3	182.2	204.9	193.7	176.2	168.4	169.2
C31	106.6	113.2	109.0	110.3	100.4	102.2	108.8	112.4	99.2	91.3	95.8	80.9	64.7	81.3	106.3
C32	149.4	160.2	174.4	167.4	118.0	137.3	173.6	199.7	163.3	161.3	182.7	81.3	73.2	81.3	98.5
C33	98.1	137.9	142.9	122.6	124.4	133.1	133.5	128.1	146.1	102.2	109.1	138.7	97.8	83.9	105.9
D	84.1	76.2	71.0	77.2	76.4	71.7	70.0	81.0	97.1	97.7	85.0	91.8	65.2	57.3	65.0
D35	84.1	76.2	71.0	77.2	76.4	71.7	70.0	81.0	97.1	97.7	85.0	91.8	65.2	57.3	65.0

* Preliminary data.

„..“ - Confidential data.