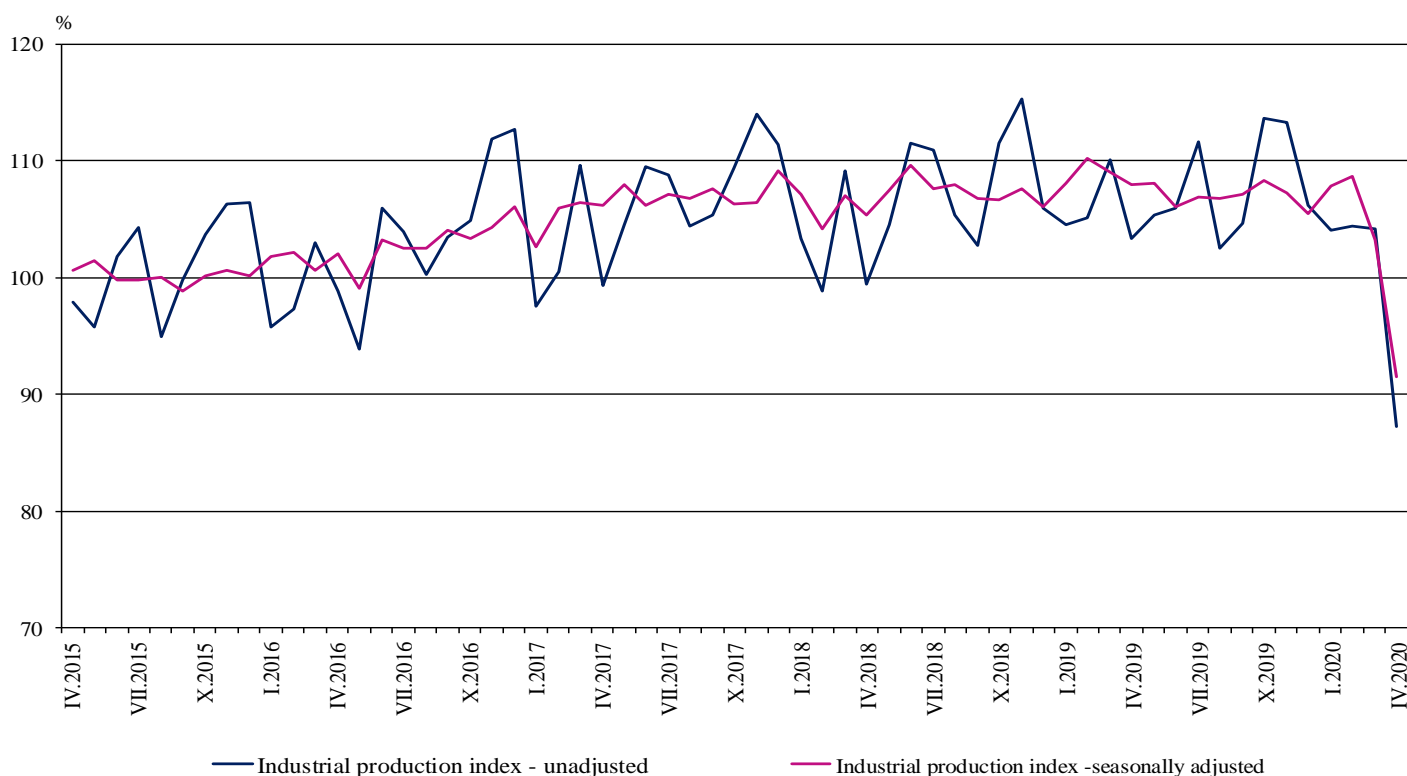


INDUSTRIAL PRODUCTION INDICES IN APRIL 2020¹

According to the preliminary data in April 2020 the Industrial Production Index², seasonally adjusted³, went down by 11.4% as compared to March 2020.

In April 2020 the working day adjusted⁴ Industrial Production Index fell by 15.7% in comparison with the same month of 2019.

Figure 1. Industrial Production Indices (2015 = 100)



¹ April 2020 data are preliminary. The final data on Industrial Production and Turnover Indices for March 2020 can be found on the NSI website: <http://www.nsi.bg/en>.

² Monthly Industrial Production and Industrial turnover indices measure changes in production and turnover values of industrial enterprises. This information can be used to assess the current economic development and for short-term forecasts. Indices do not measure the actual production level, it aims to measure the average change in value of production between two points of time. Indices are compiled on the base of information collected through representative sampling survey on industrial enterprises. The sample covers enterprises with annual turnover more than 97% of total turnover in industry.

Industrial production indices are calculated at constant base year that is to say they are weighted with the structure of the value added at factor costs in the base year.

³ Seasonal adjustment is a statistical method, which eliminates the seasonal component of time series.

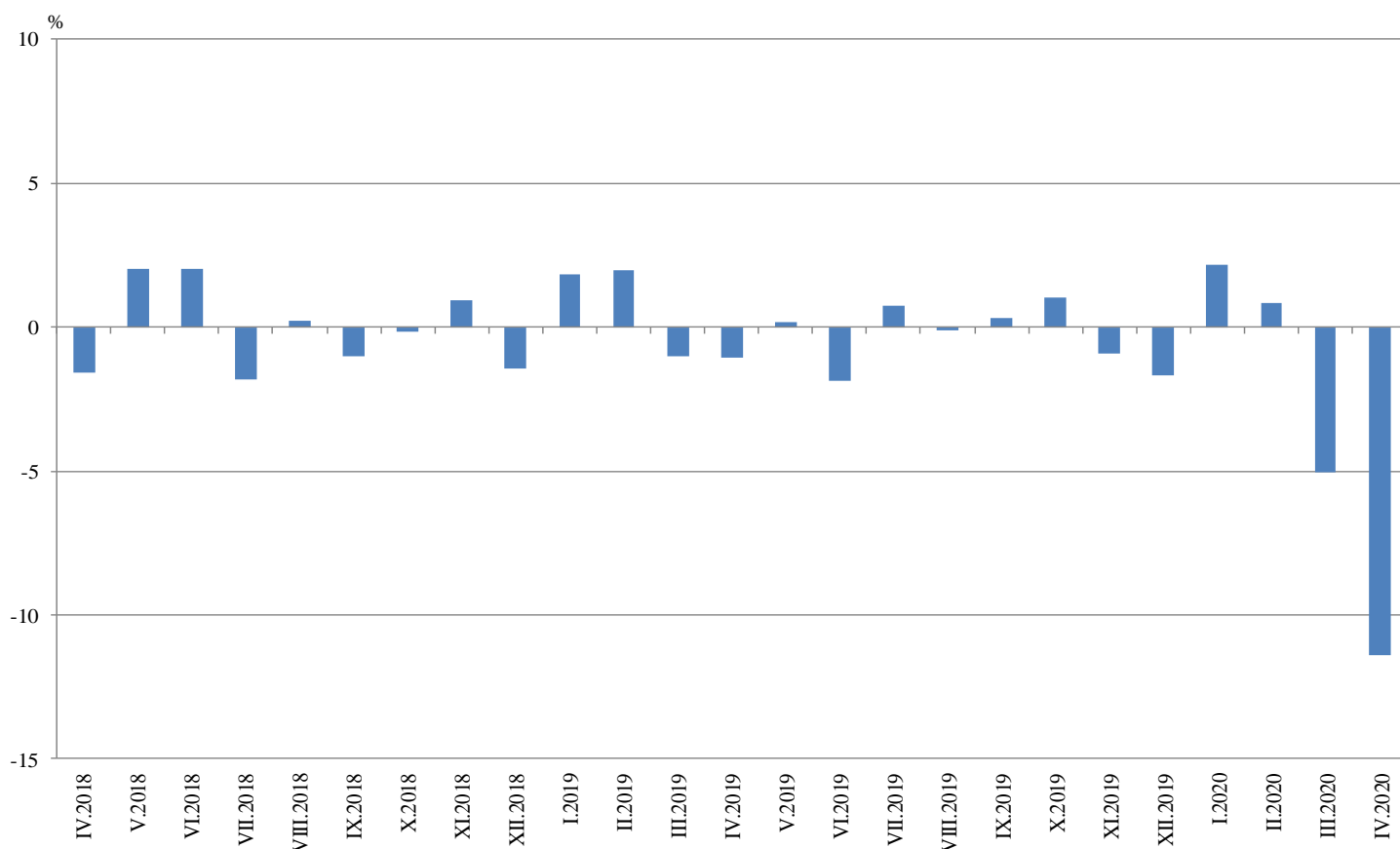
⁴ Working day adjustment is an adjustment for variations caused by calendar effects, different number of calendar and working days in the months, national holidays and outliers (for example the presence of more non-working days in May could contribute to the decline in the production in some activities).

Monthly changes

In April 2020 as compared to March 2020, the seasonally adjusted Industrial Production Index went down in the manufacturing by 13.2%, in the electricity, gas, steam and air conditioning supply by 9.6% and in the mining and quarrying industry by 5.8%.

The most significant production decreases in the manufacturing were registered in the manufacture of motor vehicles, trailers and semi-trailers by 68.2%, in the manufacture of machinery and equipment n.e.c by 22.7%, in the repair and installation of machinery and equipment by 21.3%, in the manufacture of wood and of products of wood and cork, except furniture; manufacture of articles of straw and plaiting materials by 19.5%. Important increases were seen in the manufacture of tobacco products by 6.8% and in the manufacture of basic pharmaceutical products and pharmaceutical preparations by 3.8%.

**Figure 2. Changes of Industrial Production Indices compared to the previous month
(Seasonally adjusted)**

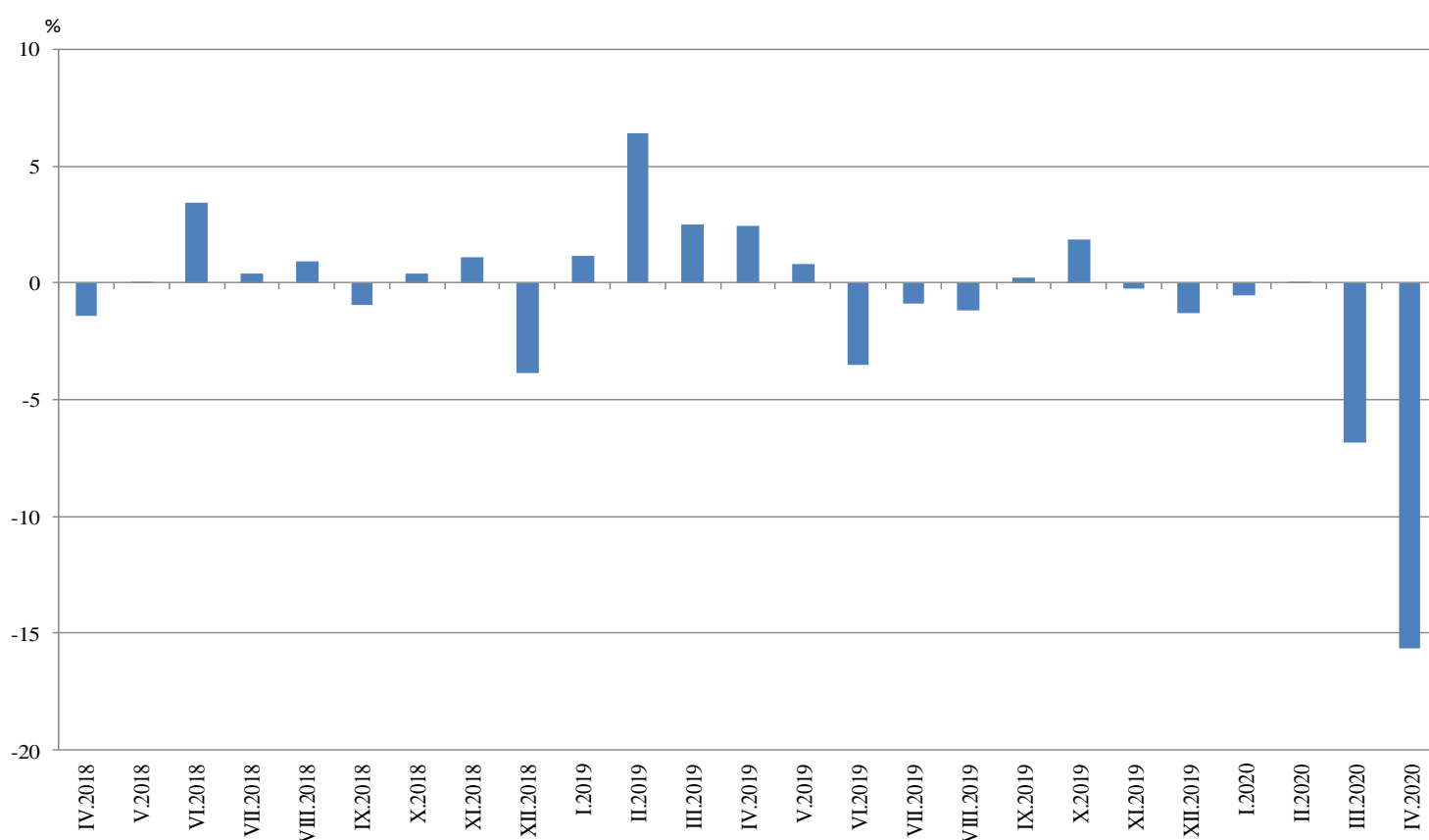


Annual changes

On annual basis in April 2020 Industrial Production Index calculated from working day adjusted data fell in the manufacturing by 18.5%, in the electricity, gas, steam and air conditioning supply by 10.9%, while the production went up in the mining and quarrying industry by 9.3%.

In the manufacturing, the more considerable decreases compared to the same month of the previous year were registered in the manufacture of motor vehicles, trailers and semi-trailers by 74.0%, in the other manufacturing by 45.4%, in the manufacture of machinery and equipment n.e.c by 37.6%, in the printing and reproduction of recorded media by 33.5%. Major increase was seen in the manufacture of basic pharmaceutical products and pharmaceutical preparations by 19.3%.

Figure 3. Changes of Industrial Production Indices compared to the same month of the previous year (Working day adjusted)



Annex

Table 1

Changes of Industrial Production Indices compared to the previous month¹

(Per cent)

Economic activities	NACE.BG - 2008	2019		2020			
		XI	XII	I	II	III	IV*
Industry	B_TO_E36	-0.9	-1.7	2.2	0.8	-5.0	-11.4
Mining and quarrying	B	-3.8	4.0	-3.0	7.0	0.9	-5.8
Mining of coal and lignite	B05	-8.4	4.2	-11.5	28.8	-1.4	1.1
Extraction of crude petroleum and natural gas	B06
Mining of metal ores	B07	-6.6	6.8	-11.0	0.8	8.0	-4.9
Other mining and quarrying	B08	3.2	-7.0	29.5	-17.9	2.6	-15.5
Mining support service activities	B09
Manufacturing	C	-0.1	-2.1	4.2	-1.4	-6.9	-13.2
Manufacture of food products	C10	-3.7	0.4	9.3	-3.6	-0.7	-11.4
Manufacture of beverages	C11	-4.2	-4.4	19.5	-5.8	-14.9	-13.8
Manufacture of tobacco products	C12	4.0	-11.0	-10.3	0.1	2.5	6.8
Manufacture of textiles	C13	1.1	-1.3	13.0	-7.4	-12.9	-10.1
Manufacture of wearing apparel	C14	-1.0	-3.8	1.2	-0.6	-13.8	3.5
Manufacture of leather and related products	C15	10.2	-14.2	3.4	-6.5	-28.6	3.4
Manufacture of wood and of products of wood and cork, except furniture; manufacture of articles of straw and plaiting materials	C16	0.4	6.5	2.5	-7.8	-9.8	-19.5
Manufacture of paper and paper products	C17	-1.9	0.4	-1.6	3.9	-0.9	-5.9
Printing and reproduction of recorded media	C18	8.7	-14.5	5.8	1.4	-12.4	-14.0
Manufacture of coke and refined petroleum products	C19
Manufacture of chemicals and chemical products	C20	-4.9	6.0	-0.4	4.7	-1.5	-7.6
Manufacture of basic pharmaceutical products and pharmaceutical preparations	C21	10.5	-11.7	6.6	-6.8	17.2	3.8
Manufacture of rubber and plastic products	C22	2.9	-1.3	0.2	0.9	-5.4	-9.0
Manufacture of other non-metallic mineral products	C23	2.6	6.3	0.4	-3.6	-12.4	-11.6
Manufacture of basic metals	C24	-0.1	0.5	1.3	-0.3	-3.7	-3.4
Manufacture of fabricated metal products, except machinery and equipment	C25	-0.5	-13.3	23.8	9.6	-14.3	-11.7
Manufacture of computer, electronic and optical products	C26	1.6	10.7	-11.9	4.3	-15.3	3.5
Manufacture of electrical equipment	C27	5.1	-4.9	3.9	5.1	-9.5	-6.5
Manufacture of machinery and equipment n.e.c.	C28	-4.7	-6.5	7.9	-2.7	-9.7	-22.7
Manufacture of motor vehicles, trailers and semi-trailers	C29	-0.6	-14.4	19.5	-0.8	-19.4	-68.2
Manufacture of other transport equipment	C30	7.6	-3.2	5.9	3.7	-12.9	-0.2
Manufacture of furniture	C31	1.6	-3.9	7.3	-0.3	-25.5	-12.4
Other manufacturing	C32	16.0	-2.1	-2.7	14.1	-60.6	-5.5
Repair and installation of machinery and equipment	C33	-11.4	-4.7	29.5	-9.1	9.4	-21.3
Electricity, gas, steam and air conditioning supply	D	-1.0	0.9	0.4	0.2	4.9	-9.6
Electricity, gas, steam and air conditioning supply	D35	-1.0	0.9	0.4	0.2	4.9	-9.6

¹ Seasonally adjusted.

* Preliminary data.

„..“ - Confidential data.

Table 2

Changes of Industrial Production Indices compared to the same month of the previous year¹
(Per cent)

Economic activities	NACE.BG - 2008	2019		2020			
		XI	XII	I	II	III	IV*
Industry	B_TO_E36	-0.3	-1.3	-0.5	0.0	-6.8	-15.7
Mining and quarrying	B	1.9	4.4	-11.3	-1.1	12.2	9.3
Mining of coal and lignite	B05	-14.7	-19.3	-36.7	-12.4	-7.4	12.0
Extraction of crude petroleum and natural gas	B06
Mining of metal ores	B07	10.8	22.2	3.8	6.2	26.9	13.6
Other mining and quarrying	B08	13.8	11.0	14.4	-10.3	-2.8	-7.9
Mining support service activities	B09
Manufacturing	C	1.6	0.0	2.5	1.8	-9.7	-18.5
Manufacture of food products	C10	8.2	4.9	5.7	5.2	8.0	-6.4
Manufacture of beverages	C11	-4.8	-4.5	19.3	7.4	-11.5	-26.5
Manufacture of tobacco products	C12	-14.9	-32.3	31.4	13.6	-7.7	-9.6
Manufacture of textiles	C13	1.8	-3.5	9.6	11.0	-5.2	-10.3
Manufacture of wearing apparel	C14	-8.1	-5.8	-9.5	-5.4	-25.7	-17.6
Manufacture of leather and related products	C15	14.3	-1.6	0.2	-10.2	-34.4	-31.9
Manufacture of wood and of products of wood and cork, except furniture; manufacture of articles of straw and plaiting materials	C16	3.9	7.8	8.3	-1.5	-12.7	-24.4
Manufacture of paper and paper products	C17	-4.9	-1.8	-8.7	1.9	-2.6	-9.9
Printing and reproduction of recorded media	C18	21.3	1.0	-0.6	-5.5	-17.4	-33.5
Manufacture of coke and refined petroleum products	C19
Manufacture of chemicals and chemical products	C20	6.6	3.4	-0.5	4.0	0.0	-1.7
Manufacture of basic pharmaceutical products and pharmaceutical preparations	C21	3.2	-17.1	-0.1	-10.5	7.1	19.3
Manufacture of rubber and plastic products	C22	3.2	-0.3	0.8	0.9	-6.0	-15.1
Manufacture of other non-metallic mineral products	C23	1.5	8.9	1.5	1.6	-13.4	-19.4
Manufacture of basic metals	C24	1.0	-12.1	9.4	1.5	-5.6	-4.3
Manufacture of fabricated metal products, except machinery and equipment	C25	-6.3	-0.3	4.0	3.5	-6.3	-12.0
Manufacture of computer, electronic and optical products	C26	13.4	31.3	8.1	5.0	-7.4	-7.1
Manufacture of electrical equipment	C27	3.0	-1.2	-1.2	4.9	-6.1	-18.1
Manufacture of machinery and equipment n.e.c.	C28	-7.4	-13.9	-8.7	-7.1	-20.4	-37.6
Manufacture of motor vehicles, trailers and semi-trailers	C29	-1.1	10.3	13.3	4.8	-19.6	-74.0
Manufacture of other transport equipment	C30	15.0	40.9	24.1	15.5	0.1	2.6
Manufacture of furniture	C31	-4.7	-7.3	0.0	-0.9	-23.7	-31.3
Other manufacturing	C32	32.9	26.3	6.7	24.8	-47.1	-45.4
Repair and installation of machinery and equipment	C33	-7.3	-17.1	1.9	-12.7	11.9	-21.7
Electricity, gas, steam and air conditioning supply	D	-10.3	-9.0	-7.5	-7.4	-0.4	-10.9
Electricity, gas, steam and air conditioning supply	D35	-10.3	-9.0	-7.5	-7.4	-0.4	-10.9

¹ Working day adjusted.

* Preliminary data.

„..“ - Confidential data.

Table 3

Industrial Production Indices
(Seasonally adjusted, 2015 = 100)

NACE.BG - 2008	2019									2020			
	IV	V	VI	VII	VIII	IX	X	XI	XII	I	II	III	IV*
B_TO_E36	107.9	108.1	106.1	106.9	106.8	107.2	108.3	107.3	105.5	107.8	108.7	103.2	91.5
B	97.3	107.9	95.0	102.3	95.6	106.1	107.0	102.9	107.0	103.8	111.1	112.0	105.6
B05	78.2	93.3	75.4	78.3	76.9	87.1	78.4	71.8	74.8	66.2	85.3	84.1	85.0
B06
B07	116.4	121.5	117.4	125.8	106.9	125.4	144.0	134.4	143.5	127.7	128.7	139.0	132.2
B08	98.0	103.1	94.2	101.6	100.7	106.2	105.0	108.4	100.8	130.5	107.2	109.9	92.9
B09
C	114.8	114.4	113.2	113.0	113.9	113.9	116.0	115.8	113.3	118.1	116.5	108.5	94.2
C10	107.4	109.9	106.3	107.3	110.1	107.7	113.8	109.5	110.0	120.2	115.9	115.1	101.9
C11	102.3	102.4	104.6	101.9	107.2	105.5	108.3	103.8	99.2	118.6	111.7	95.1	81.9
C12	45.3	52.0	38.9	51.0	41.7	48.8	47.3	49.2	43.7	39.2	39.2	40.2	43.0
C13	85.9	89.2	99.4	93.1	92.5	100.8	98.3	99.4	98.1	110.8	102.6	89.3	80.3
C14	85.1	84.6	82.5	83.9	81.6	84.1	83.0	82.2	79.1	80.0	79.6	68.6	71.0
C15	96.2	106.8	93.3	89.1	84.6	91.4	94.9	104.6	89.8	92.8	86.8	61.9	64.0
C16	75.9	79.5	72.1	76.5	73.3	79.3	78.5	78.8	83.9	86.0	79.3	71.6	57.6
C17	100.9	102.7	97.4	99.6	96.8	95.9	98.1	96.2	96.6	95.1	98.9	97.9	92.2
C18	122.4	128.1	120.1	119.8	113.8	112.8	113.9	123.8	105.9	111.9	113.5	99.5	85.5
C19
C20	114.3	121.9	115.5	117.0	109.9	114.3	118.0	112.3	119.0	118.6	124.2	122.3	112.9
C21	115.5	117.1	118.5	124.6	111.8	108.1	110.4	122.0	107.7	114.8	107.0	125.4	130.2
C22	136.9	134.8	134.0	133.1	133.7	133.0	136.9	140.9	139.1	139.4	140.7	133.1	121.1
C23	107.8	109.0	108.3	108.9	108.4	110.2	112.4	115.2	122.5	123.0	118.5	103.8	91.8
C24	104.6	99.4	98.5	102.8	106.5	108.0	111.6	111.5	112.1	113.5	113.2	109.1	105.3
C25	116.1	116.3	123.4	115.0	128.2	117.2	117.7	117.2	101.6	125.8	137.9	118.2	104.4
C26	150.7	144.7	158.7	154.1	167.8	158.7	157.8	160.4	177.6	156.5	163.3	138.2	143.1
C27	131.7	127.2	124.8	123.3	128.3	126.4	121.6	127.8	121.5	126.2	132.6	120.0	112.2
C28	126.1	123.5	120.5	117.6	112.3	117.2	121.1	115.4	107.8	116.4	113.3	102.2	79.1
C29	149.4	151.4	143.9	146.5	148.8	151.5	150.6	149.6	128.0	152.9	151.7	122.2	38.9
C30	158.4	154.8	142.7	159.9	168.5	157.9	167.2	179.9	174.1	184.5	191.3	166.6	166.3
C31	97.9	104.4	106.1	106.2	102.4	99.8	101.0	102.5	98.5	105.7	105.4	78.5	68.8
C32	136.1	148.3	153.0	168.6	121.7	135.0	158.9	184.4	180.5	175.7	200.4	79.0	74.7
C33	138.5	126.7	138.0	120.4	126.8	126.9	128.9	114.2	108.8	140.9	128.1	140.2	110.3
D	81.9	82.3	81.5	82.9	82.3	81.5	77.8	76.9	77.6	77.9	78.1	81.9	74.0
35	81.9	82.3	81.5	82.9	82.3	81.5	77.8	76.9	77.6	77.9	78.1	81.9	74.0

* Preliminary data.

...“ - Confidential data.

Table 4

Industrial Production Indices
(Working day adjusted, 2015 = 100)

NACE.BG - 2008	2017	2018	2019									2020			
	IV	IV	IV	V	VI	VII	VIII	IX	X	XI	XII	I	II	III	IV*
B_TO_E36	102.1	100.7	103.1	104.7	108.3	110.2	102.8	106.2	112.1	114.0	107.9	103.1	105.2	104.9	87.0
B	91.7	89.7	89.6	101.3	91.3	100.6	93.0	110.3	121.3	111.5	116.5	102.6	105.5	106.9	97.9
B05	78.7	54.3	57.6	78.5	56.9	70.7	72.6	92.6	100.7	85.0	93.6	81.7	87.8	73.6	64.5
B06
B07	103.1	121.4	116.4	121.5	117.4	125.8	106.9	125.4	144.0	134.4	143.5	127.7	128.7	139.0	132.2
B08	81.4	106.2	98.1	108.2	102.8	109.8	107.8	117.3	119.6	120.6	99.7	86.6	82.2	100.9	90.4
B09
C	108.5	107.4	112.3	114.4	119.8	119.3	109.9	114.4	122.1	123.2	109.7	104.9	110.7	108.6	91.5
C10	95.4	98.4	102.6	108.2	109.2	108.7	113.3	115.1	125.2	116.8	114.7	103.1	100.5	113.9	96.0
C11	97.7	98.8	102.5	111.0	128.2	125.6	135.0	117.0	98.1	92.2	96.8	75.7	81.0	89.3	75.3
C12	68.9	55.6	47.4	67.6	41.3	56.9	35.0	48.7	57.0	56.0	43.0	25.3	24.8	37.4	42.8
C13	110.4	105.3	91.8	99.0	110.6	97.2	73.1	97.1	101.2	104.1	85.3	96.7	100.7	99.9	82.3
C14	90.5	82.0	77.2	76.7	88.7	97.5	79.0	83.1	82.9	83.8	76.2	82.6	79.9	66.2	63.6
C15	85.9	92.1	88.4	97.0	98.1	102.6	75.1	95.4	99.9	111.2	79.5	92.7	86.6	65.0	60.3
C16	88.6	81.6	75.0	80.3	76.9	82.2	72.4	83.0	86.2	85.0	79.3	70.5	70.4	69.7	56.7
C17	100.6	98.1	99.4	106.3	100.1	101.8	94.7	94.5	102.8	96.3	92.0	93.6	96.3	101.4	89.6
C18	96.0	101.5	120.1	129.4	123.5	119.6	106.2	109.7	121.0	140.7	109.9	98.9	105.9	100.4	79.9
C19
C20	125.5	113.7	117.3	122.2	119.6	119.9	106.0	114.2	119.8	113.9	116.2	109.7	116.5	132.5	115.2
C21	91.5	104.5	110.1	114.0	124.4	127.2	99.5	107.4	108.1	134.4	109.5	111.5	99.2	136.8	131.3
C22	121.3	123.6	137.0	137.0	142.9	141.3	126.4	135.2	151.0	149.5	120.3	123.5	131.0	139.9	116.3
C23	105.1	111.3	109.1	118.0	118.0	117.1	113.4	118.1	125.8	122.9	110.3	87.5	96.8	104.4	88.0
C24	112.5	114.8	107.3	92.5	89.8	116.1	99.3	96.4	123.4	121.0	100.0	119.2	112.1	114.5	102.7
C25	161.0	114.5	113.5	111.3	132.9	123.8	128.2	120.1	120.3	128.8	113.2	92.1	125.6	119.9	99.9
C26	128.8	135.9	148.4	139.7	168.4	157.6	150.3	154.6	165.5	168.7	189.6	143.3	153.7	143.1	137.9
C27	99.6	113.0	131.5	127.0	132.0	126.0	115.9	128.7	132.5	141.6	106.4	115.5	130.2	125.9	107.7
C28	115.3	121.9	129.2	124.3	129.1	122.9	97.3	115.5	127.3	124.3	102.0	105.1	109.7	106.0	80.6
C29	112.9	138.6	153.2	155.6	145.5	140.4	123.8	151.8	158.3	156.7	114.2	157.0	155.4	126.6	39.8
C30	85.5	135.2	166.1	168.6	142.4	146.9	135.9	133.7	163.0	190.8	153.3	182.2	204.9	193.7	170.4
C31	105.9	106.1	94.3	105.0	109.0	110.3	100.4	102.2	108.8	112.4	99.2	91.3	95.8	80.9	64.8
C32	125.4	145.5	131.4	146.8	174.4	167.4	118.0	137.3	173.6	199.7	163.3	161.3	182.7	81.3	71.7
C33	85.8	109.2	125.0	119.4	142.9	122.6	124.4	133.1	133.5	128.1	146.1	102.2	109.1	138.7	97.8
D	85.9	78.8	73.1	67.9	71.0	77.2	76.4	71.7	70.0	81.0	97.1	97.7	85.0	91.8	65.2
D35	85.9	78.8	73.1	67.9	71.0	77.2	76.4	71.7	70.0	81.0	97.1	97.7	85.0	91.8	65.2

* Preliminary data.

„..“ - Confidential data.