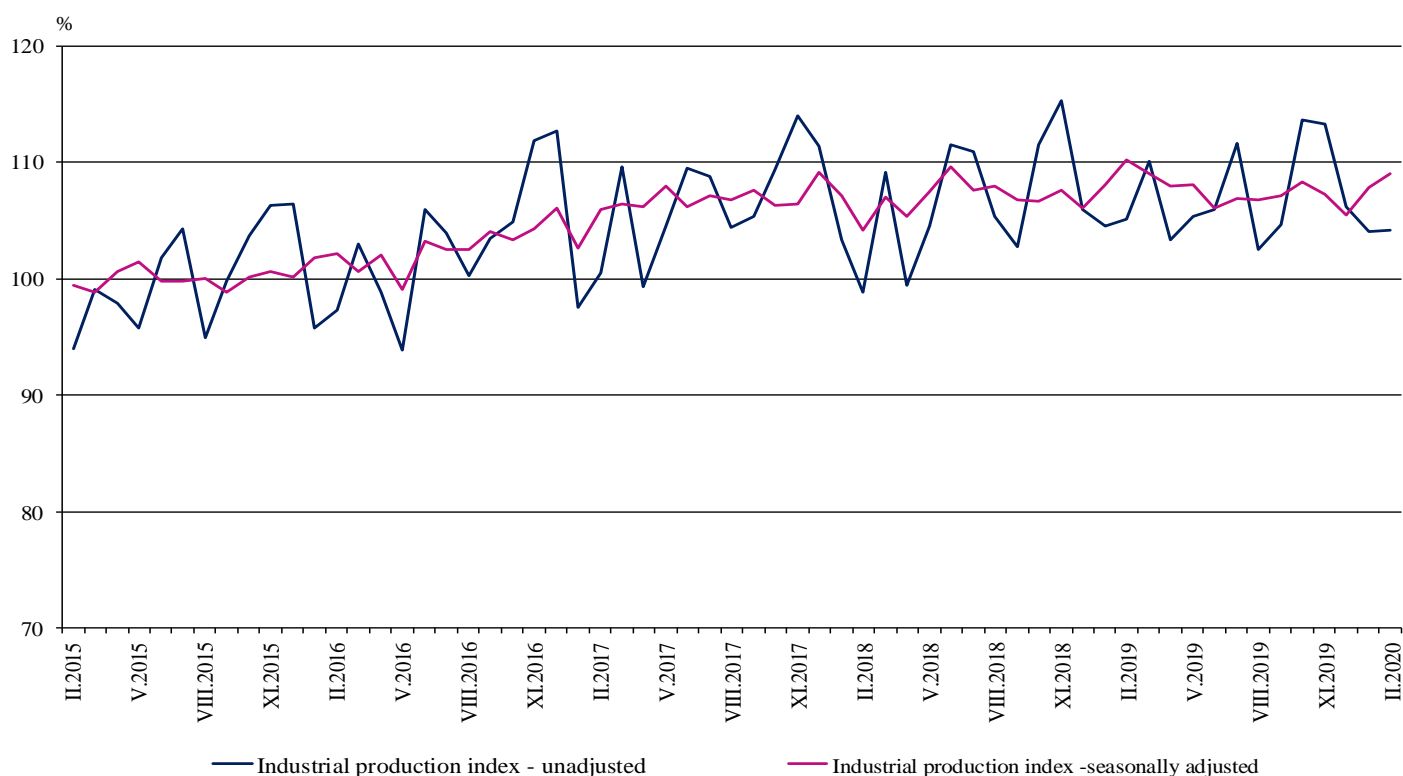


INDUSTRIAL PRODUCTION INDICES IN FEBRUARY 2020¹

According to the preliminary data in February 2020 the Industrial Production Index², seasonally adjusted³, rose by 1.1% as compared to January 2020.

In February 2020 the working day adjusted⁴ Industrial Production Index increased by 0.1% in comparison with the same month of 2019.

Figure 1. Industrial Production Indices (2015 = 100)



¹ February 2020 data are preliminary. The final data on Industrial Production and Turnover Indices for January 2020 can be found on the NSI website: <http://www.nsi.bg/en>.

² Monthly Industrial Production and Industrial turnover indices measure changes in production and turnover values of industrial enterprises. This information can be used to assess the current economic development and for short-term forecasts. Indices do not measure the actual production level, it aims to measure the average change in value of production between two points of time. Indices are compiled on the base of information collected through representative sampling survey on industrial enterprises. The sample covers enterprises with annual turnover more than 97% of total turnover in industry.

Industrial production indices are calculated at constant base year that is to say they are weighted with the structure of the value added at factor costs in the base year.

³ Seasonal adjustment is a statistical method, which eliminates the seasonal component of time series.

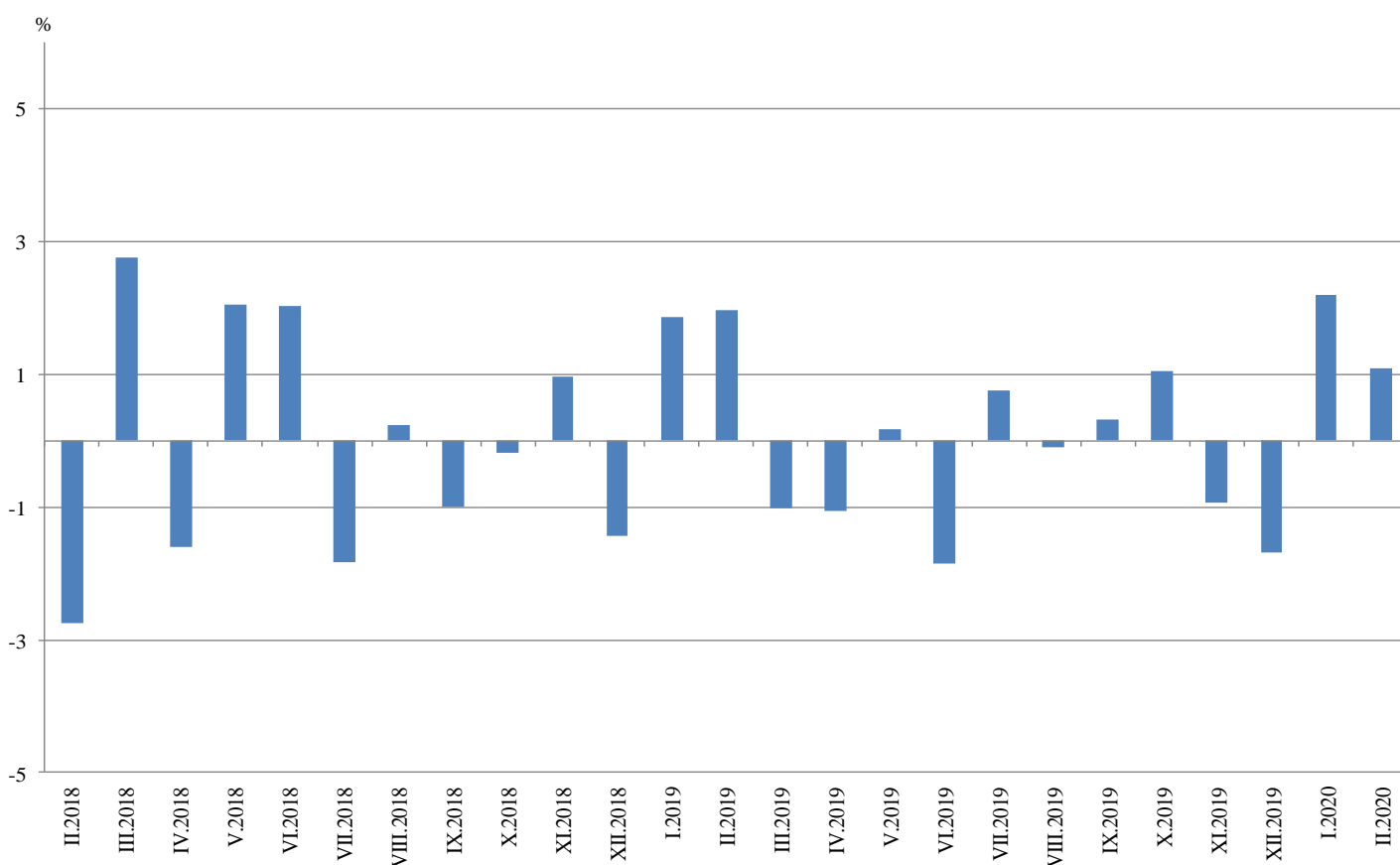
⁴ Working day adjustment is an adjustment for variations caused by calendar effects, different number of calendar and working days in the months, national holidays and outliers (for example the presence of more non-working days in May could contribute to the decline in the production in some activities).

Monthly changes

In February 2020 as compared to January 2020, the seasonally adjusted Industrial Production Index went up in the manufacturing by 1.1% and in the electricity, gas, steam and air conditioning supply by 0.6%, while the production fell in the mining and quarrying industry by 0.6%.

The most significant production increases in the manufacturing were registered in the other manufacturing by 14.3%, in the manufacture of fabricated metal products, except machinery and equipment by 8.8%, in the manufacture of electrical equipment by 5.8%, in the manufacture of other transport equipment by 4.9%. Important decreases were seen in the repair and installation of machinery and equipment by 9.5%, in the manufacture of basic pharmaceutical products and pharmaceutical preparations by 7.3%, in the manufacture of wood and of products of wood and cork, except furniture; manufacture of articles of straw and plaiting materials by 6.4%, in the manufacture of textiles by 5.5%.

**Figure 2. Changes of Industrial Production Indices compared to the previous month
(Seasonally adjusted)**

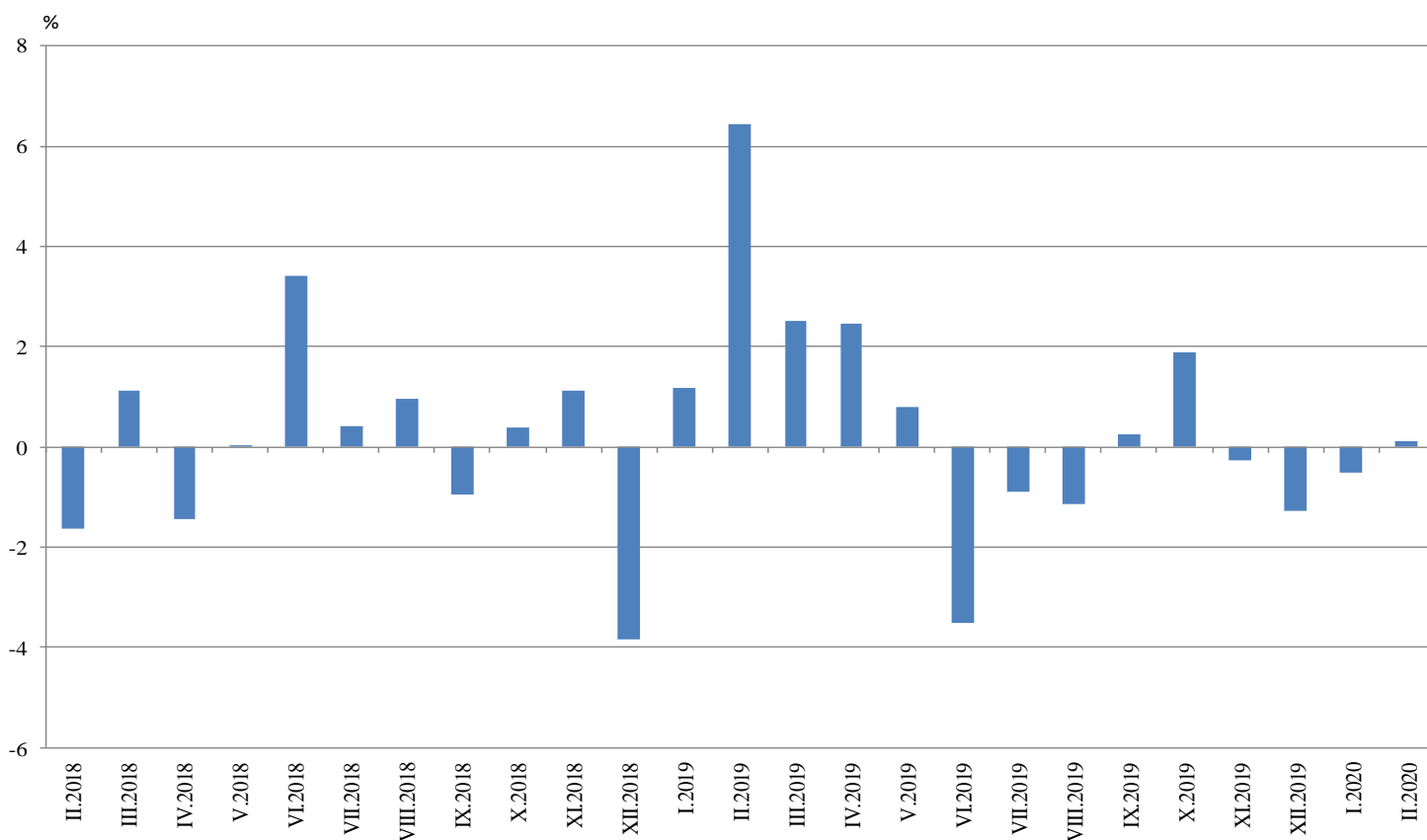


Annual changes

On annual basis in February 2020 Industrial Production Index calculated from working day adjusted data rose in the manufacturing by 2.4%, while the production went down in the mining and quarrying industry by 8.5% and in the electricity, gas, steam and air conditioning supply by 6.3%.

In the manufacturing, the more considerable increases compared to the same month of the previous year were registered in the other manufacturing by 25.1%, in the manufacture of other transport equipment by 17.9%, in the manufacture of tobacco products by 15.4%, in the manufacture of textiles by 12.2%. Major decreases were seen in the repair and installation of machinery and equipment by 12.8%, in the manufacture of basic pharmaceutical products and pharmaceutical preparations by 10.3%, in the manufacture of leather and related products by 9.0%, in the manufacture of machinery and equipment n.e.c. by 7.2%.

Figure 3. Changes of Industrial Production Indices compared to the same month of the previous year (Working day adjusted)



Annex

Table 1
Changes of Industrial Production Indices compared to the previous month¹
(Per cent)

Economic activities	NACE.BG - 2008	2019				2020	
		IX	X	XI	XII	I	II*
Industry	B_TO_E36	0.3	1.0	-0.9	-1.7	2.2	1.1
Mining and quarrying	B	10.9	0.9	-3.8	4.0	-3.0	-0.6
Mining of coal and lignite	B05	13.3	-10.0	-8.4	4.2	-11.5	1.4
Extraction of crude petroleum and natural gas	B06
Mining of metal ores	B07	17.4	14.8	-6.6	6.8	-11.0	0.9
Other mining and quarrying	B08	5.5	-1.1	3.2	-7.0	29.5	-19.9
Mining support service activities	B09
Manufacturing	C	-0.1	1.8	-0.1	-2.1	4.2	1.1
Manufacture of food products	C10	-2.2	5.7	-3.7	0.4	9.3	-3.6
Manufacture of beverages	C11	-1.6	2.7	-4.2	-4.4	19.5	-4.3
Manufacture of tobacco products	C12	17.1	-3.2	4.0	-11.0	-10.3	2.6
Manufacture of textiles	C13	8.9	-2.5	1.1	-1.3	13.0	-5.5
Manufacture of wearing apparel	C14	3.1	-1.3	-1.0	-3.8	1.2	1.7
Manufacture of leather and related products	C15	8.0	3.8	10.2	-14.2	3.4	-4.2
Manufacture of wood and of products of wood and cork, except furniture; manufacture of articles of straw and plaiting materials	C16	8.1	-1.0	0.4	6.5	2.5	-6.4
Manufacture of paper and paper products	C17	-1.0	2.3	-1.9	0.4	-1.6	3.7
Printing and reproduction of recorded media	C18	-0.9	0.9	8.7	-14.5	5.8	3.1
Manufacture of coke and refined petroleum products	C19
Manufacture of chemicals and chemical products	C20	4.1	3.2	-4.9	6.0	-0.4	4.6
Manufacture of basic pharmaceutical products and pharmaceutical preparations	C21	-3.3	2.1	10.5	-11.7	6.6	-7.3
Manufacture of rubber and plastic products	C22	-0.6	3.0	2.9	-1.3	0.2	2.9
Manufacture of other non-metallic mineral products	C23	1.6	2.0	2.6	6.3	0.4	-1.5
Manufacture of basic metals	C24	1.3	3.4	-0.1	0.5	1.3	0.5
Manufacture of fabricated metal products, except machinery and equipment	C25	-8.6	0.4	-0.5	-13.3	23.8	8.8
Manufacture of computer, electronic and optical products	C26	-5.4	-0.6	1.6	10.7	-11.9	4.6
Manufacture of electrical equipment	C27	-1.5	-3.8	5.1	-4.9	3.9	5.8
Manufacture of machinery and equipment n.e.c.	C28	4.4	3.3	-4.7	-6.5	7.9	-1.8
Manufacture of motor vehicles, trailers and semi-trailers	C29	1.8	-0.6	-0.6	-14.4	19.5	-0.8
Manufacture of other transport equipment	C30	-6.3	5.9	7.6	-3.2	5.9	4.9
Manufacture of furniture	C31	-2.5	1.1	1.6	-3.9	7.3	2.2
Other manufacturing	C32	10.9	17.7	16.0	-2.1	-2.7	14.3
Repair and installation of machinery and equipment	C33	0.1	1.5	-11.4	-4.7	29.5	-9.5
Electricity, gas, steam and air conditioning supply	D	-1.0	-4.6	-1.0	0.9	0.4	0.6
Electricity, gas, steam and air conditioning supply	D35	-1.0	-4.6	-1.0	0.9	0.4	0.6

¹ Seasonally adjusted.

* Preliminary data.

„..“ - Confidential data.

Table 2

Changes of Industrial Production Indices compared to the same month of the previous year¹
(Per cent)

Economic activities	NACE.BG - 2008	2019				2020	
		IX	X	XI	XII	I	II*
Industry	B_TO_E36	0.2	1.9	-0.3	-1.3	-0.5	0.1
Mining and quarrying	B	8.3	9.9	1.9	4.4	-11.3	-8.5
Mining of coal and lignite	B05	23.4	-10.5	-14.7	-19.3	-36.7	-32.0
Extraction of crude petroleum and natural gas	B06
Mining of metal ores	B07	0.9	29.3	10.8	22.2	3.8	6.3
Other mining and quarrying	B08	-2.9	9.7	13.8	11.0	14.4	-12.9
Mining support service activities	B09
Manufacturing	C	-0.1	2.4	1.6	0.0	2.5	2.4
Manufacture of food products	C10	3.8	12.9	8.2	4.9	5.7	5.2
Manufacture of beverages	C11	-0.5	5.7	-4.8	-4.5	19.3	7.4
Manufacture of tobacco products	C12	-4.5	-28.1	-14.9	-32.3	31.4	15.4
Manufacture of textiles	C13	6.6	0.4	1.8	-3.5	9.6	12.2
Manufacture of wearing apparel	C14	-4.7	-2.4	-8.1	-5.8	-9.5	-4.9
Manufacture of leather and related products	C15	1.5	-0.6	14.3	-1.6	0.2	-9.0
Manufacture of wood and of products of wood and cork, except furniture; manufacture of articles of straw and plaiting materials	C16	-0.1	2.5	3.9	7.8	8.3	-0.8
Manufacture of paper and paper products	C17	-7.1	-8.3	-4.9	-1.8	-8.7	1.9
Printing and reproduction of recorded media	C18	8.7	5.7	21.3	1.0	-0.6	-4.3
Manufacture of coke and refined petroleum products	C19
Manufacture of chemicals and chemical products	C20	3.6	-5.9	6.6	3.4	-0.5	3.9
Manufacture of basic pharmaceutical products and pharmaceutical preparations	C21	-19.1	-7.0	3.2	-17.1	-0.1	-10.3
Manufacture of rubber and plastic products	C22	-0.5	2.3	3.2	-0.3	0.8	2.7
Manufacture of other non-metallic mineral products	C23	4.7	-0.5	1.5	8.9	1.5	1.3
Manufacture of basic metals	C24	-8.0	18.6	1.0	-12.1	9.4	1.5
Manufacture of fabricated metal products, except machinery and equipment	C25	0.7	-1.1	-6.3	-0.3	4.0	2.5
Manufacture of computer, electronic and optical products	C26	3.5	4.8	13.4	31.3	8.1	4.4
Manufacture of electrical equipment	C27	5.2	-1.5	3.0	-1.2	-1.2	4.8
Manufacture of machinery and equipment n.e.c.	C28	-3.7	-2.0	-7.4	-13.9	-8.7	-7.2
Manufacture of motor vehicles, trailers and semi-trailers	C29	4.0	3.2	-1.1	10.3	13.3	4.8
Manufacture of other transport equipment	C30	26.0	5.9	15.0	40.9	24.1	17.9
Manufacture of furniture	C31	-8.9	-6.1	-4.7	-7.3	0.0	1.6
Other manufacturing	C32	-0.1	35.4	32.9	26.3	6.7	25.1
Repair and installation of machinery and equipment	C33	-3.9	2.0	-7.3	-17.1	1.9	-12.8
Electricity, gas, steam and air conditioning supply	D	-2.5	-6.0	-10.3	-9.0	-7.5	-6.3
Electricity, gas, steam and air conditioning supply	D35	-2.5	-6.0	-10.3	-9.0	-7.5	-6.3

¹ Working day adjusted.

* Preliminary data.

„..“ - Confidential data.

Table 3

Industrial Production Indices
(Seasonally adjusted, 2015 = 100)

NACE.BG - 2008	2019											2020	
	II	III	IV	V	VI	VII	VIII	IX	X	XI	XII	I	II*
B_TO_E36	110.2	109.1	107.9	108.1	106.1	106.9	106.8	107.2	108.3	107.3	105.5	107.8	109.0
B	112.7	100.7	97.3	107.9	95.0	102.3	95.6	106.1	107.0	102.9	107.0	103.8	103.1
B05	98.7	90.2	78.2	93.3	75.4	78.3	76.9	87.1	78.4	71.8	74.8	66.2	67.1
B06
B07	121.2	109.5	116.4	121.5	117.4	125.8	106.9	125.4	144.0	134.4	143.5	127.7	128.9
B08	118.0	113.5	98.0	103.1	94.2	101.6	100.7	106.2	105.0	108.4	100.8	130.5	104.5
B09
C	118.1	116.7	114.8	114.4	113.2	113.0	113.9	113.9	116.0	115.8	113.3	118.1	119.4
C10	110.2	107.1	107.4	109.9	106.3	107.3	110.1	107.7	113.8	109.5	110.0	120.2	115.9
C11	107.3	105.8	102.3	102.4	104.6	101.9	107.2	105.5	108.3	103.8	99.2	118.6	113.5
C12	33.1	39.1	45.3	52.0	38.9	51.0	41.7	48.8	47.3	49.2	43.7	39.2	40.2
C13	93.2	93.5	85.9	89.2	99.4	93.1	92.5	100.8	98.3	99.4	98.1	110.8	104.7
C14	86.2	88.8	85.1	84.6	82.5	83.9	81.6	84.1	83.0	82.2	79.1	80.0	81.4
C15	96.5	95.8	96.2	106.8	93.3	89.1	84.6	91.4	94.9	104.6	89.8	92.8	89.0
C16	80.9	80.6	75.9	79.5	72.1	76.5	73.3	79.3	78.5	78.8	83.9	86.0	80.5
C17	99.0	102.0	100.9	102.7	97.4	99.6	96.8	95.9	98.1	96.2	96.6	95.1	98.6
C18	121.0	119.0	122.4	128.1	120.1	119.8	113.8	112.8	113.9	123.8	105.9	111.9	115.5
C19
C20	119.8	122.7	114.3	121.9	115.5	117.0	109.9	114.3	118.0	112.3	119.0	118.6	124.0
C21	114.8	120.3	115.5	117.1	118.5	124.6	111.8	108.1	110.4	122.0	107.7	114.8	106.4
C22	140.8	142.8	136.9	134.8	134.0	133.1	133.7	133.0	136.9	140.9	139.1	139.4	143.4
C23	118.7	119.0	107.8	109.0	108.3	108.9	108.4	110.2	112.4	115.2	122.5	123.0	121.1
C24	114.1	110.9	104.6	99.4	98.5	102.8	106.5	108.0	111.6	111.5	112.1	113.5	114.1
C25	136.6	126.0	116.1	116.3	123.4	115.0	128.2	117.2	117.7	117.2	101.6	125.8	136.9
C26	156.3	144.8	150.7	144.7	158.7	154.1	167.8	158.7	157.8	160.4	177.6	156.5	163.7
C27	130.2	127.5	131.7	127.2	124.8	123.3	128.3	126.4	121.6	127.8	121.5	126.2	133.5
C28	123.1	125.1	126.1	123.5	120.5	117.6	112.3	117.2	121.1	115.4	107.8	116.4	114.3
C29	144.1	146.2	149.4	151.4	143.9	146.5	148.8	151.5	150.6	149.6	128.0	152.9	151.7
C30	170.1	165.1	158.4	154.8	142.7	159.9	168.5	157.9	167.2	179.9	174.1	184.5	193.5
C31	107.4	105.3	97.9	104.4	106.1	106.2	102.4	99.8	101.0	102.5	98.5	105.7	108.0
C32	164.2	150.6	136.1	148.3	153.0	168.6	121.7	135.0	158.9	184.4	180.5	175.7	200.9
C33	146.4	126.8	138.5	126.7	138.0	120.4	126.8	126.9	128.9	114.2	108.8	140.9	127.6
D	83.7	84.0	81.9	82.3	81.5	82.9	82.3	81.5	77.8	76.9	77.6	77.9	78.4
D35	83.7	84.0	81.9	82.3	81.5	82.9	82.3	81.5	77.8	76.9	77.6	77.9	78.4

* Preliminary data.

...“ - Confidential data.

Table 4

Industrial Production Indices
(Working day adjusted, 2015 = 100)

NACE.BG - 2008	2017	2018	2019												2020	
	II	II	II	III	IV	V	VI	VII	VIII	IX	X	XI	XII	I	II*	
B_TO_E36	100.5	98.8	105.2	112.6	103.1	104.7	108.3	110.2	102.8	106.2	112.1	114.0	107.9	103.1	105.3	
B	105.5	90.3	106.7	95.3	89.6	101.3	91.3	100.6	93.0	110.3	121.3	111.5	116.5	102.6	97.6	
B05	109.1	74.5	100.2	79.6	57.6	78.5	56.9	70.7	72.6	92.6	100.7	85.0	93.6	81.7	68.1	
B06	
B07	110.5	112.9	121.2	109.5	116.4	121.5	117.4	125.8	106.9	125.4	144.0	134.4	143.5	127.7	128.9	
B08	67.7	79.2	91.6	103.8	98.1	108.2	102.8	109.8	107.8	117.3	119.6	120.6	99.7	86.6	79.8	
B09	
C	98.2	99.6	108.8	120.3	112.3	114.4	119.8	119.3	109.9	114.4	122.1	123.2	109.7	104.9	111.4	
C10	88.6	88.8	95.6	105.4	102.6	108.2	109.2	108.7	113.3	115.1	125.2	116.8	114.7	103.1	100.6	
C11	71.7	66.4	75.5	100.9	102.5	111.0	128.2	125.6	135.0	117.0	98.1	92.2	96.8	75.7	81.0	
C12	55.9	32.2	21.9	40.5	47.4	67.6	41.3	56.9	35.0	48.7	57.0	56.0	43.0	25.3	25.2	
C13	104.7	93.0	90.8	105.4	91.8	99.0	110.6	97.2	73.1	97.1	101.2	104.1	85.3	96.7	101.9	
C14	98.6	91.6	84.4	89.0	77.2	76.7	88.7	97.5	79.0	83.1	82.9	83.8	76.2	82.6	80.3	
C15	91.8	97.5	96.5	99.1	88.4	97.0	98.1	102.6	75.1	95.4	99.9	111.2	79.5	92.7	87.7	
C16	85.2	69.8	71.5	79.9	75.0	80.3	76.9	82.2	72.4	83.0	86.2	85.0	79.3	70.5	70.9	
C17	99.7	97.0	94.5	104.2	99.4	106.3	100.1	101.8	94.7	94.5	102.8	96.3	92.0	93.6	96.2	
C18	95.6	89.3	112.0	121.5	120.1	129.4	123.5	119.6	106.2	109.7	121.0	140.7	109.9	98.9	107.2	
C19	
C20	111.7	103.0	112.0	132.6	117.3	122.2	119.6	119.9	106.0	114.2	119.8	113.9	116.2	109.7	116.3	
C21	100.1	102.9	110.8	127.7	110.1	114.0	124.4	127.2	99.5	107.4	108.1	134.4	109.5	111.5	99.4	
C22	108.7	114.1	129.8	148.8	137.0	137.0	142.9	141.3	126.4	135.2	151.0	149.5	120.3	123.5	133.3	
C23	79.5	82.9	95.3	120.5	109.1	118.0	118.0	117.1	113.4	118.1	125.8	122.9	110.3	87.5	96.5	
C24	108.2	105.3	110.4	121.3	107.3	92.5	89.8	116.1	99.3	96.4	123.4	121.0	100.0	119.2	112.1	
C25	117.2	111.8	121.3	128.0	113.5	111.3	132.9	123.8	128.2	120.1	120.3	128.8	113.2	92.1	124.4	
C26	114.5	129.6	146.4	154.4	148.4	139.7	168.4	157.6	150.3	154.6	165.5	168.7	189.6	143.3	152.9	
C27	97.8	101.2	124.1	134.1	131.5	127.0	132.0	126.0	115.9	128.7	132.5	141.6	106.4	115.5	130.0	
C28	107.9	111.2	118.0	133.2	129.2	124.3	129.1	122.9	97.3	115.5	127.3	124.3	102.0	105.1	109.5	
C29	114.7	131.4	148.3	157.5	153.2	155.6	145.5	140.4	123.8	151.8	158.3	156.7	114.2	157.0	155.3	
C30	79.2	126.6	177.4	193.5	166.1	168.6	142.4	146.9	135.9	133.7	163.0	190.8	153.3	182.2	209.1	
C31	90.6	100.4	96.6	106.0	94.3	105.0	109.0	110.3	100.4	102.2	108.8	112.4	99.2	91.3	98.1	
C32	120.2	119.4	146.4	153.6	131.4	146.8	174.4	167.4	118.0	137.3	173.6	199.7	163.3	161.3	183.2	
C33	80.1	100.9	124.9	123.9	125.0	119.4	142.9	122.6	124.4	133.1	133.5	128.1	146.1	102.2	109.0	
D	107.1	99.7	91.8	92.1	73.1	67.9	71.0	77.2	76.4	71.7	70.0	81.0	97.1	97.7	86.0	
D35	107.1	99.7	91.8	92.1	73.1	67.9	71.0	77.2	76.4	71.7	70.0	81.0	97.1	97.7	86.0	

* Preliminary data.

„..“ - Confidential data.