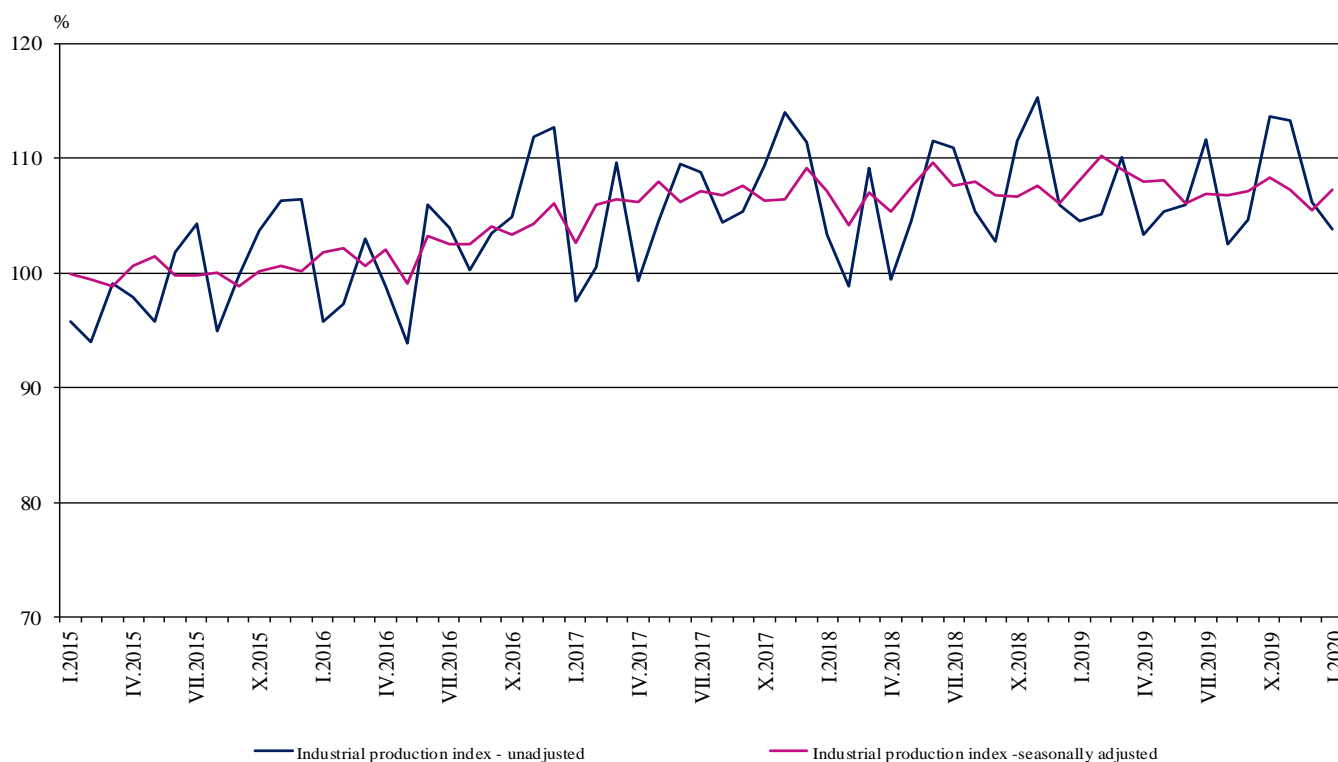


INDUSTRIAL PRODUCTION INDICES IN JANUARY 2020¹

According to the preliminary data in January 2020 the Industrial Production Index², seasonally adjusted³, increased by 1.6% as compared to December 2019.

In January 2020 the working day adjusted⁴ Industrial Production Index decreased by 0.7% in comparison with the same month of 2019.

Figure 1. Industrial Production Indices (2015 = 100)



¹ January 2020 data are preliminary. The final data on Industrial Production and Turnover Indices for December 2019 can be found on the NSI website: <http://www.nsi.bg/en>.

² Monthly Industrial Production and Industrial turnover indices measure changes in production and turnover values of industrial enterprises. This information can be used to assess the current economic development and for short-term forecasts. Indices do not measure the actual production level, it aims to measure the average change in value of production between two points of time. Indices are compiled on the base of information collected through representative sampling survey on industrial enterprises. The sample covers enterprises with annual turnover more than 97% of total turnover in industry.

Industrial production indices are calculated at constant base year that is to say they are weighted with the structure of the value added at factor costs in the base year.

³ Seasonal adjustment is a statistical method, which eliminates the seasonal component of time series.

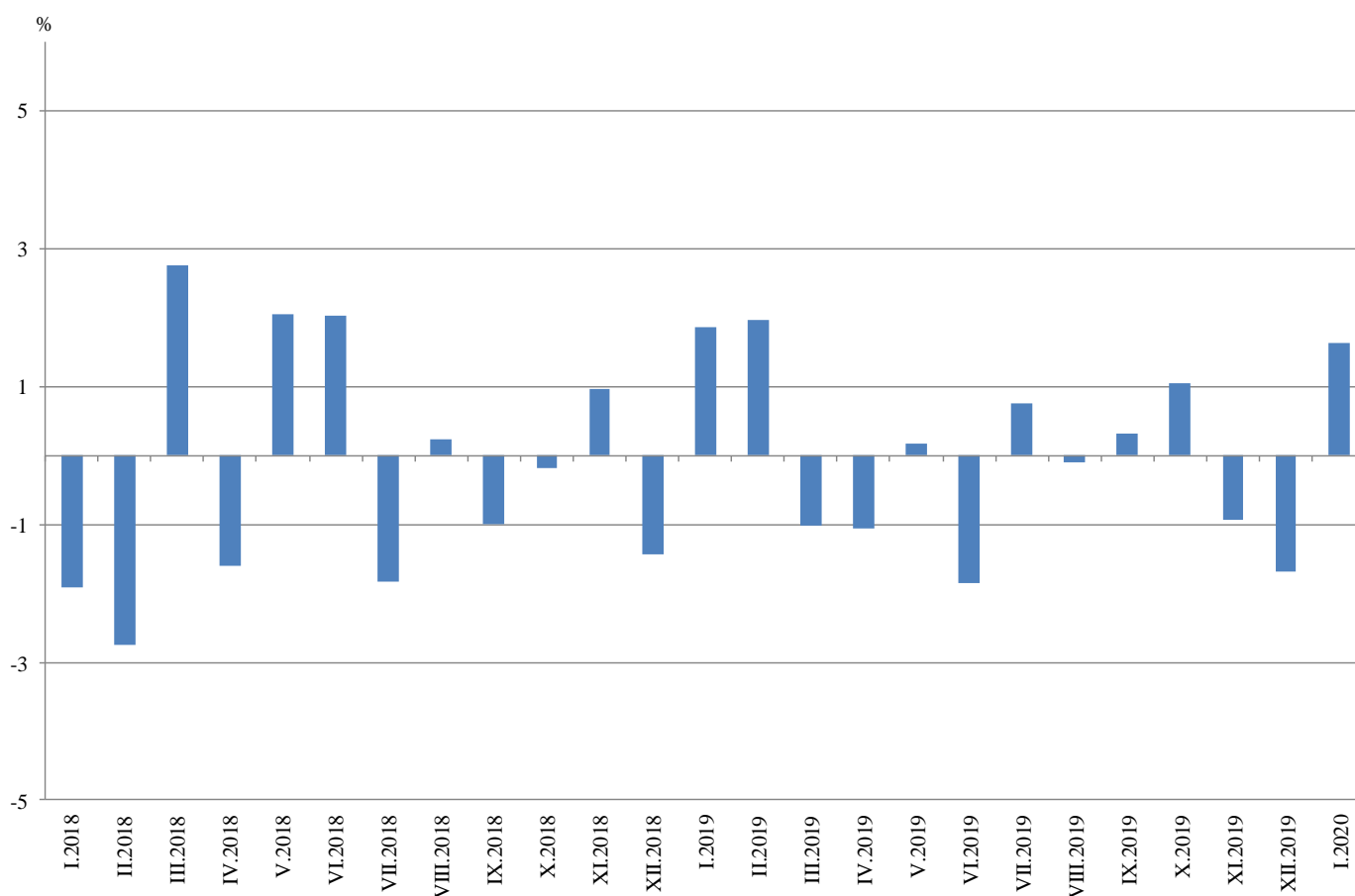
⁴ Working day adjustment is an adjustment for variations caused by calendar effects, different number of calendar and working days in the months, national holidays and outliers (for example the presence of more non-working days in May could contribute to the decline in the production in some activities).

Monthly changes

In January 2020 as compared to December 2019, the seasonally adjusted Industrial Production Index rose in the manufacturing by 3.6% and in the electricity, gas, steam and air conditioning supply by 0.6%, while the production went down in the mining and quarrying industry by 3.3%.

The most significant production increases in the manufacturing were registered in the repair and installation of machinery and equipment by 27.4%, in the manufacture of fabricated metal products, except machinery and equipment by 23.5%, in the manufacture of motor vehicles, trailers and semi-trailers by 19.8%, in the manufacture of beverages by 16.0%. Important decreases were seen in the manufacture of computer, electronic and optical products by 11.7%, in the manufacture of tobacco products by 10.5%.

Figure 2. Changes of Industrial Production Indices compared to the previous month
(Seasonally adjusted)

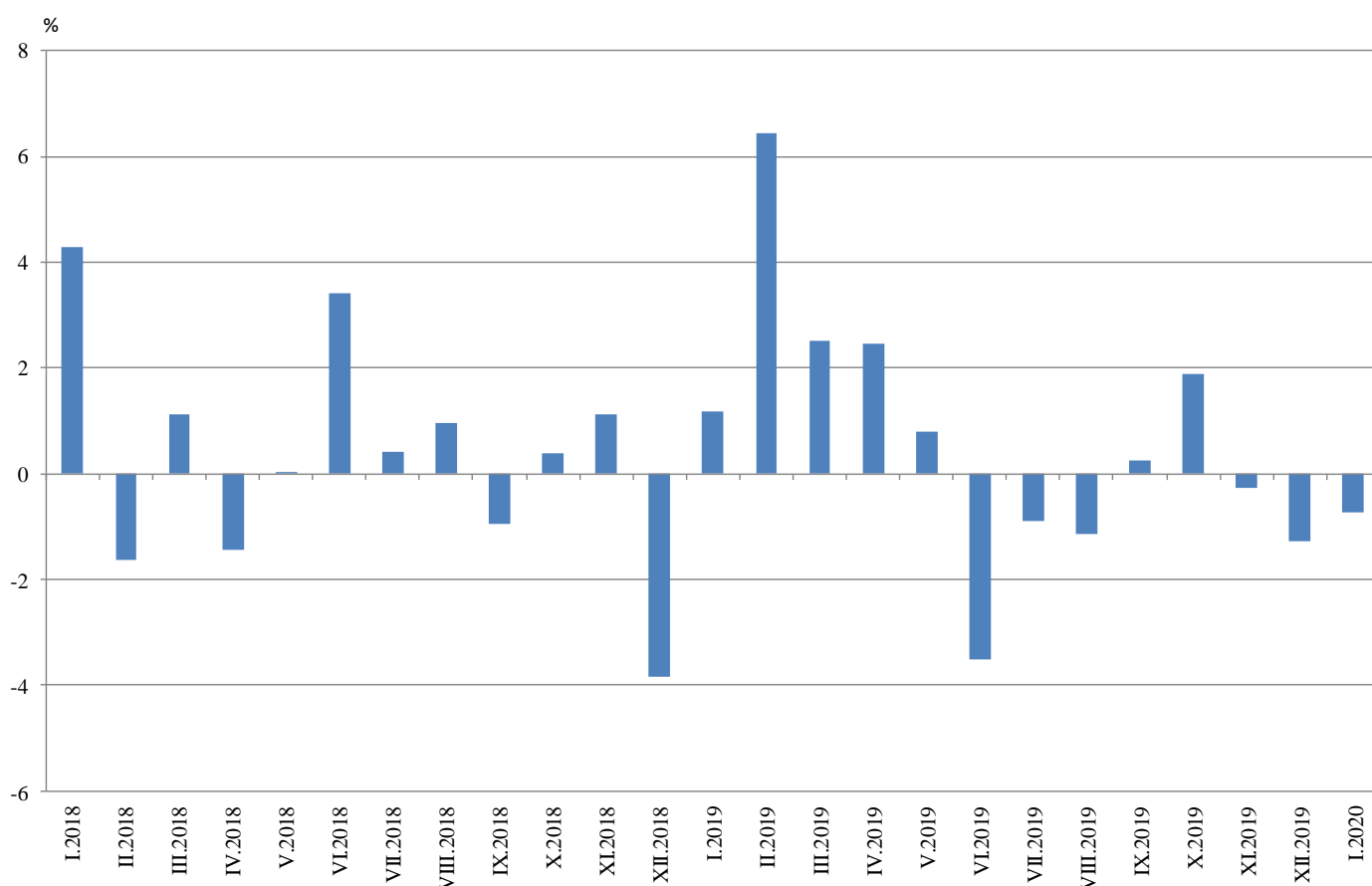


Annual changes

On annual basis in January 2020 Industrial Production Index calculated from working day adjusted data fell in the mining and quarrying industry by 11.7% and in the electricity, gas, steam and air conditioning supply by 7.2%, while the production rose in the manufacturing by 2.1%,

In the manufacturing, the more considerable increases compared to the same month of the previous year were registered in the manufacture of tobacco products by 26.8%, in the manufacture of other transport equipment by 24.1%, in the manufacture of beverages by 15.2%, in the manufacture of motor vehicles, trailers and semi-trailers by 13.4%. Major decreases were seen in the manufacture of wearing apparel by 10.0%, in the manufacturing of paper and paper products and in the manufacture of machinery and equipment n.e.c. by 8.5%.

Figure 3. Changes of Industrial Production Indices compared to the same month of the previous year (Working day adjusted)



Annex

Table 1
Changes of Industrial Production Indices compared to the previous month¹
(Per cent)

| Economic activities | NACE.BG - 2008 | 2019 | | | | | 2020 |
|---|-----------------|-------------|-------------|-------------|-------------|-------------|-------------|
| | | VIII | IX | X | XI | XII | I* |
| Industry | B_TO_E36 | -0.1 | 0.3 | 1.0 | -0.9 | -1.7 | 1.6 |
| Mining and quarrying | B | -6.5 | 10.9 | 0.9 | -3.8 | 4.0 | -3.3 |
| Mining of coal and lignite | B05 | -1.7 | 13.3 | -10.0 | -8.4 | 4.2 | -12.2 |
| Extraction of crude petroleum and natural gas | B06 | .. | .. | .. | .. | .. | .. |
| Mining of metal ores | B07 | -15.0 | 17.4 | 14.8 | -6.6 | 6.8 | -11.2 |
| Other mining and quarrying | B08 | -0.9 | 5.5 | -1.1 | 3.2 | -7.0 | 29.6 |
| Mining support service activities | B09 | .. | .. | .. | .. | .. | .. |
| Manufacturing | C | 0.8 | -0.1 | 1.8 | -0.1 | -2.1 | 3.6 |
| Manufacture of food products | C10 | 2.6 | -2.2 | 5.7 | -3.7 | 0.4 | 8.9 |
| Manufacture of beverages | C11 | 5.3 | -1.6 | 2.7 | -4.2 | -4.4 | 16.0 |
| Manufacture of tobacco products | C12 | -18.2 | 17.1 | -3.2 | 4.0 | -11.0 | -10.5 |
| Manufacture of textiles | C13 | -0.6 | 8.9 | -2.5 | 1.1 | -1.3 | 12.6 |
| Manufacture of wearing apparel | C14 | -2.8 | 3.1 | -1.3 | -1.0 | -3.8 | 0.3 |
| Manufacture of leather and related products | C15 | -5.0 | 8.0 | 3.8 | 10.2 | -14.2 | 3.5 |
| Manufacture of wood and of products of wood and cork, except furniture; manufacture of articles of straw and plaiting materials | C16 | -4.1 | 8.1 | -1.0 | 0.4 | 6.5 | 2.0 |
| Manufacture of paper and paper products | C17 | -2.7 | -1.0 | 2.3 | -1.9 | 0.4 | -2.0 |
| Printing and reproduction of recorded media | C18 | -5.0 | -0.9 | 0.9 | 8.7 | -14.5 | 5.7 |
| Manufacture of coke and refined petroleum products | C19 | .. | .. | .. | .. | .. | .. |
| Manufacture of chemicals and chemical products | C20 | -6.0 | 4.1 | 3.2 | -4.9 | 6.0 | -0.4 |
| Manufacture of basic pharmaceutical products and pharmaceutical preparations | C21 | -10.2 | -3.3 | 2.1 | 10.5 | -11.7 | 7.3 |
| Manufacture of rubber and plastic products | C22 | 0.5 | -0.6 | 3.0 | 2.9 | -1.3 | -0.3 |
| Manufacture of other non-metallic mineral products | C23 | -0.5 | 1.6 | 2.0 | 2.6 | 6.3 | 1.8 |
| Manufacture of basic metals | C24 | 3.6 | 1.3 | 3.4 | -0.1 | 0.5 | 0.4 |
| Manufacture of fabricated metal products, except machinery and equipment | C25 | 11.6 | -8.6 | 0.4 | -0.5 | -13.3 | 23.5 |
| Manufacture of computer, electronic and optical products | C26 | 8.9 | -5.4 | -0.6 | 1.6 | 10.7 | -11.7 |
| Manufacture of electrical equipment | C27 | 4.0 | -1.5 | -3.8 | 5.1 | -4.9 | 1.8 |
| Manufacture of machinery and equipment n.e.c. | C28 | -4.5 | 4.4 | 3.3 | -4.7 | -6.5 | 8.2 |
| Manufacture of motor vehicles, trailers and semi-trailers | C29 | 1.6 | 1.8 | -0.6 | -0.6 | -14.4 | 19.8 |
| Manufacture of other transport equipment | C30 | 5.4 | -6.3 | 5.9 | 7.6 | -3.2 | 5.3 |
| Manufacture of furniture | C31 | -3.6 | -2.5 | 1.1 | 1.6 | -3.9 | 6.3 |
| Other manufacturing | C32 | -27.8 | 10.9 | 17.7 | 16.0 | -2.1 | -2.7 |
| Repair and installation of machinery and equipment | C33 | 5.3 | 0.1 | 1.5 | -11.4 | -4.7 | 27.4 |
| Electricity, gas, steam and air conditioning supply | D | -0.6 | -1.0 | -4.6 | -1.0 | 0.9 | 0.6 |
| Electricity, gas, steam and air conditioning supply | D35 | -0.6 | -1.0 | -4.6 | -1.0 | 0.9 | 0.6 |

¹ Seasonally adjusted.

* Preliminary data.

„..“ - Confidential data.

Table 2

Changes of Industrial Production Indices compared to the same month of the previous year¹
(Per cent)

| Economic activities | NACE.BG - 2008 | 2019 | | | | | 2020 |
|---|-----------------|-------------|-------------|-------------|--------------|-------------|--------------|
| | | VIII | IX | X | XI | XII | I* |
| Industry | B_TO_E36 | -1.2 | 0.2 | 1.9 | -0.3 | -1.3 | -0.7 |
| Mining and quarrying | B | 1.0 | 8.3 | 9.9 | 1.9 | 4.4 | -11.7 |
| Mining of coal and lignite | B05 | -3.9 | 23.4 | -10.5 | -14.7 | -19.3 | -37.2 |
| Extraction of crude petroleum and natural gas | B06 | .. | .. | .. | .. | .. | .. |
| Mining of metal ores | B07 | 1.4 | 0.9 | 29.3 | 10.8 | 22.2 | 3.6 |
| Other mining and quarrying | B08 | 5.6 | -2.9 | 9.7 | 13.8 | 11.0 | 14.4 |
| Mining support service activities | B09 | .. | .. | .. | .. | .. | .. |
| Manufacturing | C | -1.0 | -0.1 | 2.4 | 1.6 | 0.0 | 2.1 |
| Manufacture of food products | C10 | 6.5 | 3.8 | 12.9 | 8.2 | 4.9 | 5.2 |
| Manufacture of beverages | C11 | 6.6 | -0.5 | 5.7 | -4.8 | -4.5 | 15.2 |
| Manufacture of tobacco products | C12 | -24.6 | -4.5 | -28.1 | -14.9 | -32.3 | 26.8 |
| Manufacture of textiles | C13 | -9.8 | 6.6 | 0.4 | 1.8 | -3.5 | 9.0 |
| Manufacture of wearing apparel | C14 | -11.9 | -4.7 | -2.4 | -8.1 | -5.8 | -10.0 |
| Manufacture of leather and related products | C15 | -6.5 | 1.5 | -0.6 | 14.3 | -1.6 | -0.1 |
| Manufacture of wood and of products of wood and cork, except furniture; manufacture of articles of straw and plaiting materials | C16 | -4.0 | -0.1 | 2.5 | 3.9 | 7.8 | 7.6 |
| Manufacture of paper and paper products | C17 | -5.1 | -7.1 | -8.3 | -4.9 | -1.8 | -8.5 |
| Printing and reproduction of recorded media | C18 | 6.0 | 8.7 | 5.7 | 21.3 | 1.0 | -0.5 |
| Manufacture of coke and refined petroleum products | C19 | .. | .. | .. | .. | .. | .. |
| Manufacture of chemicals and chemical products | C20 | -8.3 | 3.6 | -5.9 | 6.6 | 3.4 | -0.5 |
| Manufacture of basic pharmaceutical products and pharmaceutical preparations | C21 | -2.8 | -19.1 | -7.0 | 3.2 | -17.1 | -0.1 |
| Manufacture of rubber and plastic products | C22 | 4.4 | -0.5 | 2.3 | 3.2 | -0.3 | 0.6 |
| Manufacture of other non-metallic mineral products | C23 | -0.6 | 4.7 | -0.5 | 1.5 | 8.9 | 2.9 |
| Manufacture of basic metals | C24 | -10.2 | -8.0 | 18.6 | 1.0 | -12.1 | 8.5 |
| Manufacture of fabricated metal products, except machinery and equipment | C25 | -1.5 | 0.7 | -1.1 | -6.3 | -0.3 | 4.4 |
| Manufacture of computer, electronic and optical products | C26 | 14.5 | 3.5 | 4.8 | 13.4 | 31.3 | 8.4 |
| Manufacture of electrical equipment | C27 | 2.3 | 5.2 | -1.5 | 3.0 | -1.2 | -2.8 |
| Manufacture of machinery and equipment n.e.c. | C28 | -5.9 | -3.7 | -2.0 | -7.4 | -13.9 | -8.5 |
| Manufacture of motor vehicles, trailers and semi-trailers | C29 | 6.4 | 4.0 | 3.2 | -1.1 | 10.3 | 13.4 |
| Manufacture of other transport equipment | C30 | 52.1 | 26.0 | 5.9 | 15.0 | 40.9 | 24.1 |
| Manufacture of furniture | C31 | -3.0 | -8.9 | -6.1 | -4.7 | -7.3 | -0.7 |
| Other manufacturing | C32 | -10.6 | -0.1 | 35.4 | 32.9 | 26.3 | 7.2 |
| Repair and installation of machinery and equipment | C33 | -10.4 | -3.9 | 2.0 | -7.3 | -17.1 | 0.1 |
| Electricity, gas, steam and air conditioning supply | D | -3.7 | -2.5 | -6.0 | -10.3 | -9.0 | -7.2 |
| Electricity, gas, steam and air conditioning supply | D35 | -3.7 | -2.5 | -6.0 | -10.3 | -9.0 | -7.2 |

¹ Working day adjusted.

* Preliminary data.

„..“ - Confidential data.

Table 3

Industrial Production Indices
(Seasonally adjusted, 2015 = 100)

| NACE.BG - 2008 | 2019 | | | | | | | | | | | | 2020 |
|-----------------|--------------|--------------|--------------|--------------|--------------|--------------|--------------|--------------|--------------|--------------|--------------|--------------|--------------|
| | I | II | III | IV | V | VI | VII | VIII | IX | X | XI | XII | I* |
| B_TO_E36 | 108.1 | 110.2 | 109.1 | 107.9 | 108.1 | 106.1 | 106.9 | 106.8 | 107.2 | 108.3 | 107.3 | 105.5 | 107.2 |
| B | 117.2 | 112.7 | 100.7 | 97.3 | 107.9 | 95.0 | 102.3 | 95.6 | 106.1 | 107.0 | 102.9 | 107.0 | 103.5 |
| B05 | 113.7 | 98.7 | 90.2 | 78.2 | 93.3 | 75.4 | 78.3 | 76.9 | 87.1 | 78.4 | 71.8 | 74.8 | 65.7 |
| B06 | .. | .. | .. | .. | .. | .. | .. | .. | .. | .. | .. | .. | .. |
| B07 | 123.1 | 121.2 | 109.5 | 116.4 | 121.5 | 117.4 | 125.8 | 106.9 | 125.4 | 144.0 | 134.4 | 143.5 | 127.5 |
| B08 | 114.8 | 118.0 | 113.5 | 98.0 | 103.1 | 94.2 | 101.6 | 100.7 | 106.2 | 105.0 | 108.4 | 100.8 | 130.6 |
| B09 | .. | .. | .. | .. | .. | .. | .. | .. | .. | .. | .. | .. | .. |
| C | 115.4 | 118.1 | 116.7 | 114.8 | 114.4 | 113.2 | 113.0 | 113.9 | 113.9 | 116.0 | 115.8 | 113.3 | 117.4 |
| C10 | 113.9 | 110.2 | 107.1 | 107.4 | 109.9 | 106.3 | 107.3 | 110.1 | 107.7 | 113.8 | 109.5 | 110.0 | 119.7 |
| C11 | 100.9 | 107.3 | 105.8 | 102.3 | 102.4 | 104.6 | 101.9 | 107.2 | 105.5 | 108.3 | 103.8 | 99.2 | 115.1 |
| C12 | 29.4 | 33.1 | 39.1 | 45.3 | 52.0 | 38.9 | 51.0 | 41.7 | 48.8 | 47.3 | 49.2 | 43.7 | 39.1 |
| C13 | 101.7 | 93.2 | 93.5 | 85.9 | 89.2 | 99.4 | 93.1 | 92.5 | 100.8 | 98.3 | 99.4 | 98.1 | 110.4 |
| C14 | 88.2 | 86.2 | 88.8 | 85.1 | 84.6 | 82.5 | 83.9 | 81.6 | 84.1 | 83.0 | 82.2 | 79.1 | 79.4 |
| C15 | 92.9 | 96.5 | 95.8 | 96.2 | 106.8 | 93.3 | 89.1 | 84.6 | 91.4 | 94.9 | 104.6 | 89.8 | 92.9 |
| C16 | 79.7 | 80.9 | 80.6 | 75.9 | 79.5 | 72.1 | 76.5 | 73.3 | 79.3 | 78.5 | 78.8 | 83.9 | 85.6 |
| C17 | 103.6 | 99.0 | 102.0 | 100.9 | 102.7 | 97.4 | 99.6 | 96.8 | 95.9 | 98.1 | 96.2 | 96.6 | 94.7 |
| C18 | 112.3 | 121.0 | 119.0 | 122.4 | 128.1 | 120.1 | 119.8 | 113.8 | 112.8 | 113.9 | 123.8 | 105.9 | 111.9 |
| C19 | .. | .. | .. | .. | .. | .. | .. | .. | .. | .. | .. | .. | .. |
| C20 | 119.2 | 119.8 | 122.7 | 114.3 | 121.9 | 115.5 | 117.0 | 109.9 | 114.3 | 118.0 | 112.3 | 119.0 | 118.6 |
| C21 | 116.4 | 114.8 | 120.3 | 115.5 | 117.1 | 118.5 | 124.6 | 111.8 | 108.1 | 110.4 | 122.0 | 107.7 | 115.6 |
| C22 | 137.9 | 140.8 | 142.8 | 136.9 | 134.8 | 134.0 | 133.1 | 133.7 | 133.0 | 136.9 | 140.9 | 139.1 | 138.8 |
| C23 | 120.6 | 118.7 | 119.0 | 107.8 | 109.0 | 108.3 | 108.9 | 108.4 | 110.2 | 112.4 | 115.2 | 122.5 | 124.6 |
| C24 | 113.2 | 114.1 | 110.9 | 104.6 | 99.4 | 98.5 | 102.8 | 106.5 | 108.0 | 111.6 | 111.5 | 112.1 | 112.5 |
| C25 | 120.3 | 136.6 | 126.0 | 116.1 | 116.3 | 123.4 | 115.0 | 128.2 | 117.2 | 117.7 | 117.2 | 101.6 | 125.5 |
| C26 | 144.5 | 156.3 | 144.8 | 150.7 | 144.7 | 158.7 | 154.1 | 167.8 | 158.7 | 157.8 | 160.4 | 177.6 | 156.9 |
| C27 | 127.0 | 130.2 | 127.5 | 131.7 | 127.2 | 124.8 | 123.3 | 128.3 | 126.4 | 121.6 | 127.8 | 121.5 | 123.6 |
| C28 | 127.6 | 123.1 | 125.1 | 126.1 | 123.5 | 120.5 | 117.6 | 112.3 | 117.2 | 121.1 | 115.4 | 107.8 | 116.6 |
| C29 | 135.0 | 144.1 | 146.2 | 149.4 | 151.4 | 143.9 | 146.5 | 148.8 | 151.5 | 150.6 | 149.6 | 128.0 | 153.4 |
| C30 | 149.3 | 170.1 | 165.1 | 158.4 | 154.8 | 142.7 | 159.9 | 168.5 | 157.9 | 167.2 | 179.9 | 174.1 | 183.3 |
| C31 | 105.5 | 107.4 | 105.3 | 97.9 | 104.4 | 106.1 | 106.2 | 102.4 | 99.8 | 101.0 | 102.5 | 98.5 | 104.7 |
| C32 | 164.1 | 164.2 | 150.6 | 136.1 | 148.3 | 153.0 | 168.6 | 121.7 | 135.0 | 158.9 | 184.4 | 180.5 | 175.7 |
| C33 | 138.8 | 146.4 | 126.8 | 138.5 | 126.7 | 138.0 | 120.4 | 126.8 | 126.9 | 128.9 | 114.2 | 108.8 | 138.6 |
| D | 84.1 | 83.7 | 84.0 | 81.9 | 82.3 | 81.5 | 82.9 | 82.3 | 81.5 | 77.8 | 76.9 | 77.6 | 78.1 |
| 35 | 84.1 | 83.7 | 84.0 | 81.9 | 82.3 | 81.5 | 82.9 | 82.3 | 81.5 | 77.8 | 76.9 | 77.6 | 78.1 |

* Preliminary data.

...“ - Confidential data.

Table 4

Industrial Production Indices
(Working day adjusted, 2015 = 100)

| NACE.BG - 2008 | 2017 | 2018 | 2019 | | | | | | | | | | | | 2020 |
|-------------------|--------------|--------------|--------------|--------------|--------------|--------------|--------------|--------------|--------------|--------------|--------------|--------------|--------------|--------------|--------------|
| | I | I | I | II | III | IV | V | VI | VII | VIII | IX | X | XI | XII | I* |
| B_TO_E36 | 98.2 | 102.5 | 103.7 | 105.2 | 112.6 | 103.1 | 104.7 | 108.3 | 110.2 | 102.8 | 106.2 | 112.1 | 114.0 | 107.9 | 102.9 |
| B | 101.4 | 97.9 | 115.8 | 106.7 | 95.3 | 89.6 | 101.3 | 91.3 | 100.6 | 93.0 | 110.3 | 121.3 | 111.5 | 116.5 | 102.3 |
| B05 | 103.8 | 94.5 | 128.9 | 100.2 | 79.6 | 57.6 | 78.5 | 56.9 | 70.7 | 72.6 | 92.6 | 100.7 | 85.0 | 93.6 | 80.9 |
| B06 | .. | .. | .. | .. | .. | .. | .. | .. | .. | .. | .. | .. | .. | .. | .. |
| B07 | 110.3 | 116.0 | 123.1 | 121.2 | 109.5 | 116.4 | 121.5 | 117.4 | 125.8 | 106.9 | 125.4 | 144.0 | 134.4 | 143.5 | 127.5 |
| B08 | 46.1 | 69.8 | 75.7 | 91.6 | 103.8 | 98.1 | 108.2 | 102.8 | 109.8 | 107.8 | 117.3 | 119.6 | 120.6 | 99.7 | 86.6 |
| B09 | .. | .. | .. | .. | .. | .. | .. | .. | .. | .. | .. | .. | .. | .. | .. |
| C | 89.4 | 99.5 | 102.4 | 108.8 | 120.3 | 112.3 | 114.4 | 119.8 | 119.3 | 109.9 | 114.4 | 122.1 | 123.2 | 109.7 | 104.6 |
| C10 | 87.0 | 92.2 | 97.6 | 95.6 | 105.4 | 102.6 | 108.2 | 109.2 | 108.7 | 113.3 | 115.1 | 125.2 | 116.8 | 114.7 | 102.6 |
| C11 | 55.4 | 62.4 | 63.5 | 75.5 | 100.9 | 102.5 | 111.0 | 128.2 | 125.6 | 135.0 | 117.0 | 98.1 | 92.2 | 96.8 | 73.1 |
| C12 | 59.2 | 34.1 | 19.2 | 21.9 | 40.5 | 47.4 | 67.6 | 41.3 | 56.9 | 35.0 | 48.7 | 57.0 | 56.0 | 43.0 | 24.4 |
| C13 | 80.0 | 80.3 | 88.3 | 90.8 | 105.4 | 91.8 | 99.0 | 110.6 | 97.2 | 73.1 | 97.1 | 101.2 | 104.1 | 85.3 | 96.2 |
| C14 | 105.4 | 94.9 | 91.2 | 84.4 | 89.0 | 77.2 | 76.7 | 88.7 | 97.5 | 79.0 | 83.1 | 82.9 | 83.8 | 76.2 | 82.0 |
| C15 | 98.3 | 90.8 | 92.5 | 96.5 | 99.1 | 88.4 | 97.0 | 98.1 | 102.6 | 75.1 | 95.4 | 99.9 | 111.2 | 79.5 | 92.4 |
| C16 | 70.5 | 70.2 | 65.1 | 71.5 | 79.9 | 75.0 | 80.3 | 76.9 | 82.2 | 72.4 | 83.0 | 86.2 | 85.0 | 79.3 | 70.0 |
| C17 | 99.4 | 101.1 | 102.5 | 94.5 | 104.2 | 99.4 | 106.3 | 100.1 | 101.8 | 94.7 | 94.5 | 102.8 | 96.3 | 92.0 | 93.8 |
| C18 | 92.7 | 94.6 | 99.5 | 112.0 | 121.5 | 120.1 | 129.4 | 123.5 | 119.6 | 106.2 | 109.7 | 121.0 | 140.7 | 109.9 | 99.0 |
| C19 | .. | .. | .. | .. | .. | .. | .. | .. | .. | .. | .. | .. | .. | .. | .. |
| C20 | 102.1 | 106.7 | 110.3 | 112.0 | 132.6 | 117.3 | 122.2 | 119.6 | 119.9 | 106.0 | 114.2 | 119.8 | 113.9 | 116.2 | 109.8 |
| C21 | 99.7 | 105.6 | 111.6 | 110.8 | 127.7 | 110.1 | 114.0 | 124.4 | 127.2 | 99.5 | 107.4 | 108.1 | 134.4 | 109.5 | 111.5 |
| C22 | 103.2 | 113.0 | 122.5 | 129.8 | 148.8 | 137.0 | 137.0 | 142.9 | 141.3 | 126.4 | 135.2 | 151.0 | 149.5 | 120.3 | 123.2 |
| C23 | 58.2 | 79.7 | 86.2 | 95.3 | 120.5 | 109.1 | 118.0 | 118.0 | 117.1 | 113.4 | 118.1 | 125.8 | 122.9 | 110.3 | 88.8 |
| C24 | 103.4 | 126.5 | 108.9 | 110.4 | 121.3 | 107.3 | 92.5 | 89.8 | 116.1 | 99.3 | 96.4 | 123.4 | 121.0 | 100.0 | 118.1 |
| C25 | 77.4 | 92.6 | 88.6 | 121.3 | 128.0 | 113.5 | 111.3 | 132.9 | 123.8 | 128.2 | 120.1 | 120.3 | 128.8 | 113.2 | 92.4 |
| C26 | 128.8 | 130.6 | 132.6 | 146.4 | 154.4 | 148.4 | 139.7 | 168.4 | 157.6 | 150.3 | 154.6 | 165.5 | 168.7 | 189.6 | 143.7 |
| C27 | 92.7 | 103.2 | 116.8 | 124.1 | 134.1 | 131.5 | 127.0 | 132.0 | 126.0 | 115.9 | 128.7 | 132.5 | 141.6 | 106.4 | 113.6 |
| C28 | 92.6 | 107.7 | 115.1 | 118.0 | 133.2 | 129.2 | 124.3 | 129.1 | 122.9 | 97.3 | 115.5 | 127.3 | 124.3 | 102.0 | 105.4 |
| C29 | 115.2 | 133.0 | 138.6 | 148.3 | 157.5 | 153.2 | 155.6 | 145.5 | 140.4 | 123.8 | 151.8 | 158.3 | 156.7 | 114.2 | 157.2 |
| C30 | 86.6 | 124.4 | 146.8 | 177.4 | 193.5 | 166.1 | 168.6 | 142.4 | 146.9 | 135.9 | 133.7 | 163.0 | 190.8 | 153.3 | 182.2 |
| C31 | 84.7 | 98.3 | 91.3 | 96.6 | 106.0 | 94.3 | 105.0 | 109.0 | 110.3 | 100.4 | 102.2 | 108.8 | 112.4 | 99.2 | 90.7 |
| C32 | 138.3 | 125.3 | 151.2 | 146.4 | 153.6 | 131.4 | 146.8 | 174.4 | 167.4 | 118.0 | 137.3 | 173.6 | 199.7 | 163.3 | 162.1 |
| C33 | 60.9 | 84.4 | 100.3 | 124.9 | 123.9 | 125.0 | 119.4 | 142.9 | 122.6 | 124.4 | 133.1 | 133.5 | 128.1 | 146.1 | 100.4 |
| D | 127.6 | 116.5 | 105.6 | 91.8 | 92.1 | 73.1 | 67.9 | 71.0 | 77.2 | 76.4 | 71.7 | 70.0 | 81.0 | 97.1 | 98.0 |
| D35 | 127.6 | 116.5 | 105.6 | 91.8 | 92.1 | 73.1 | 67.9 | 71.0 | 77.2 | 76.4 | 71.7 | 70.0 | 81.0 | 97.1 | 98.0 |

* Preliminary data.

„..“ - Confidential data.