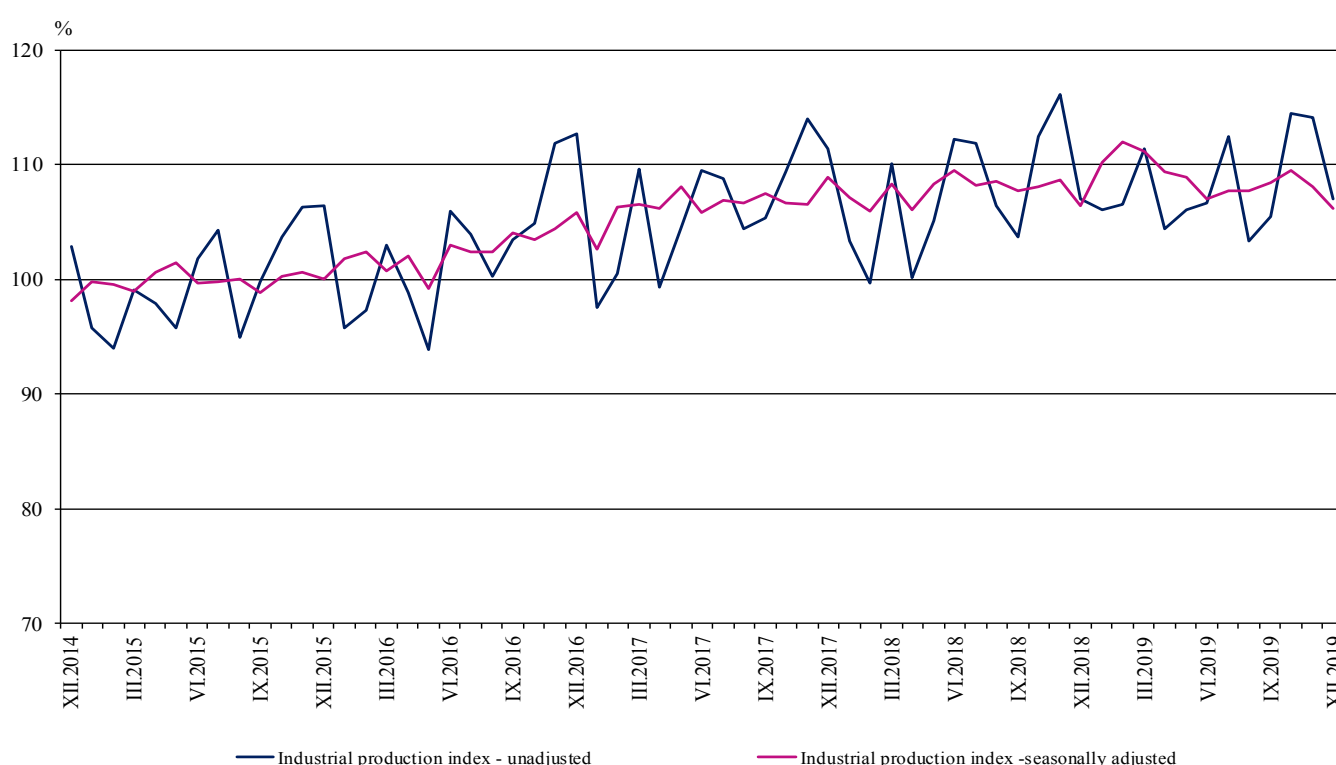


INDUSTRIAL PRODUCTION INDICES IN DECEMBER 2019¹

According to the preliminary data in December 2019 the Industrial Production Index², seasonally adjusted³, fell by 1.8% as compared to November 2019.

In December 2019 the working day adjusted⁴ Industrial Production Index decreased by 1.5% in comparison with the same month of 2018.

Figure 1. Industrial Production Indices (2015 = 100)



¹ December 2019 data are preliminary. The final data on Industrial Production and Turnover Indices for November 2019 can be found on the NSI website: <http://www.nsi.bg/en>.

² Monthly Industrial Production and Industrial turnover indices measure changes in production and turnover values of industrial enterprises. This information can be used to access the current economic development and for short-term forecasts. Indices do not measure the actual production level, it aims to measure the average change in value of production between two points of time. Indices are compiled on the base of information collected through representative sampling survey on industrial enterprises. The sample covers enterprises with annual turnover more than 97% of total turnover in industry.

Industrial production indices are calculated at constant base year that is to say they are weighted with the structure of the value added at factor costs in the base year.

³ Seasonal adjustment is a statistical method, which eliminates the seasonal component of time series.

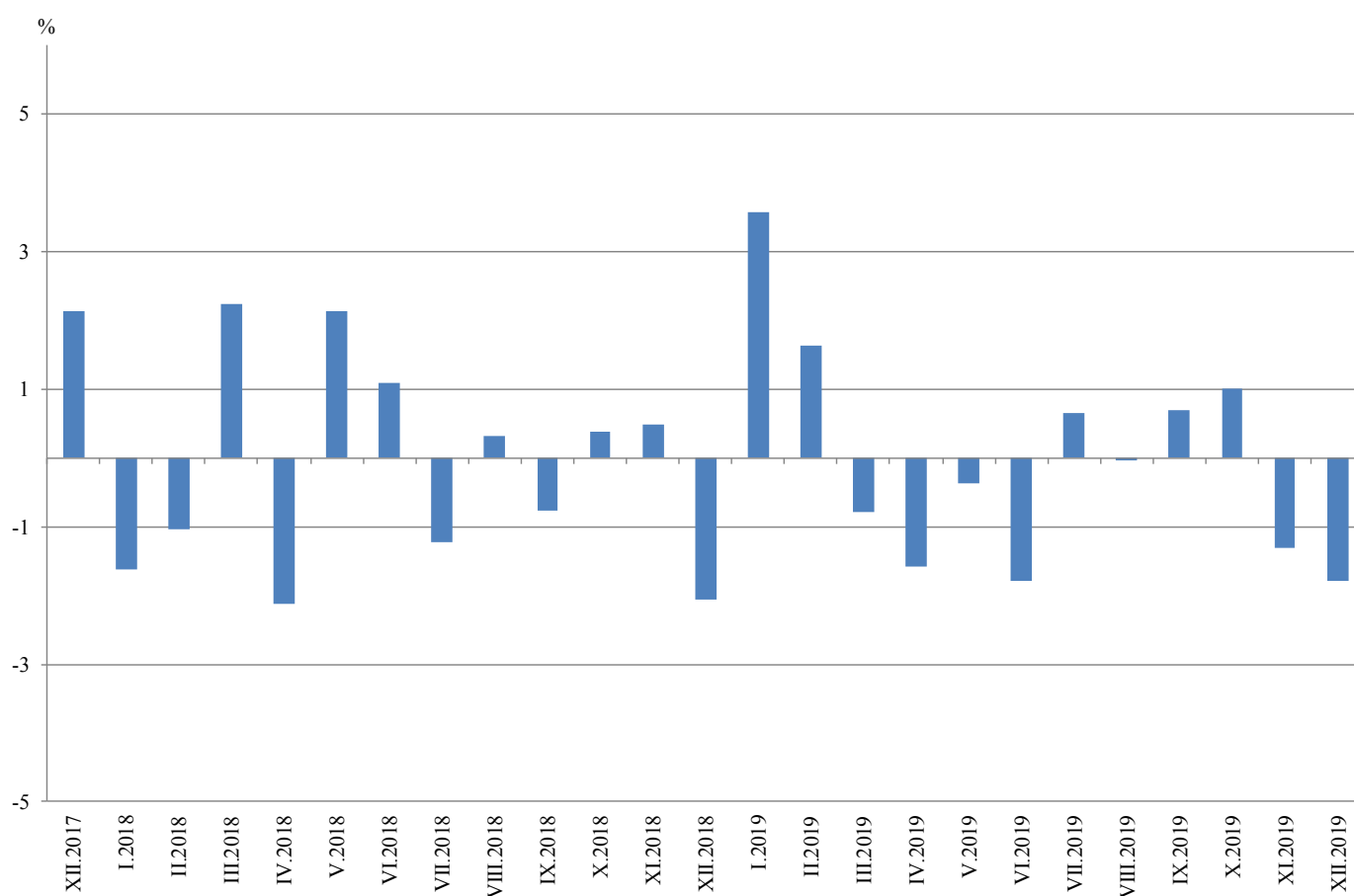
⁴ Working day adjustment is an adjustment for variations caused by calendar effects, different number of calendar and working days in the months, national holidays and outliers (for example the presence of more non-working days in May could contribute to the decline in the production in some activities).

Monthly changes

In December 2019 as compared to November 2019, the seasonally adjusted Industrial Production Index rose in the mining and quarrying industry by 4.1% and in the electricity, gas, steam and air conditioning supply by 0.4%, while the production went down in the manufacturing by 2.3%.

The most significant production decreases in the manufacturing were registered in the manufacture of motor vehicles, trailers and semi-trailers by 17.1%, in the manufacture of tobacco products by 16.2%, in the manufacture of fabricated metal products, except machinery and equipment by 14.4%, in the printing and reproduction of recorded media by 13.1%. Important increases were seen in the manufacture of computer, electronic and optical products by 11.8%, in the manufacture of wood and of products of wood and cork, except furniture; manufacture of articles of straw and plaiting materials by 6.6%, in the manufacture of other non-metallic mineral products by 6.4%, in the manufacture of chemicals and chemical products by 5.5%.

**Figure 2. Changes of Industrial Production Indices compared to the previous month
(Seasonally adjusted)**

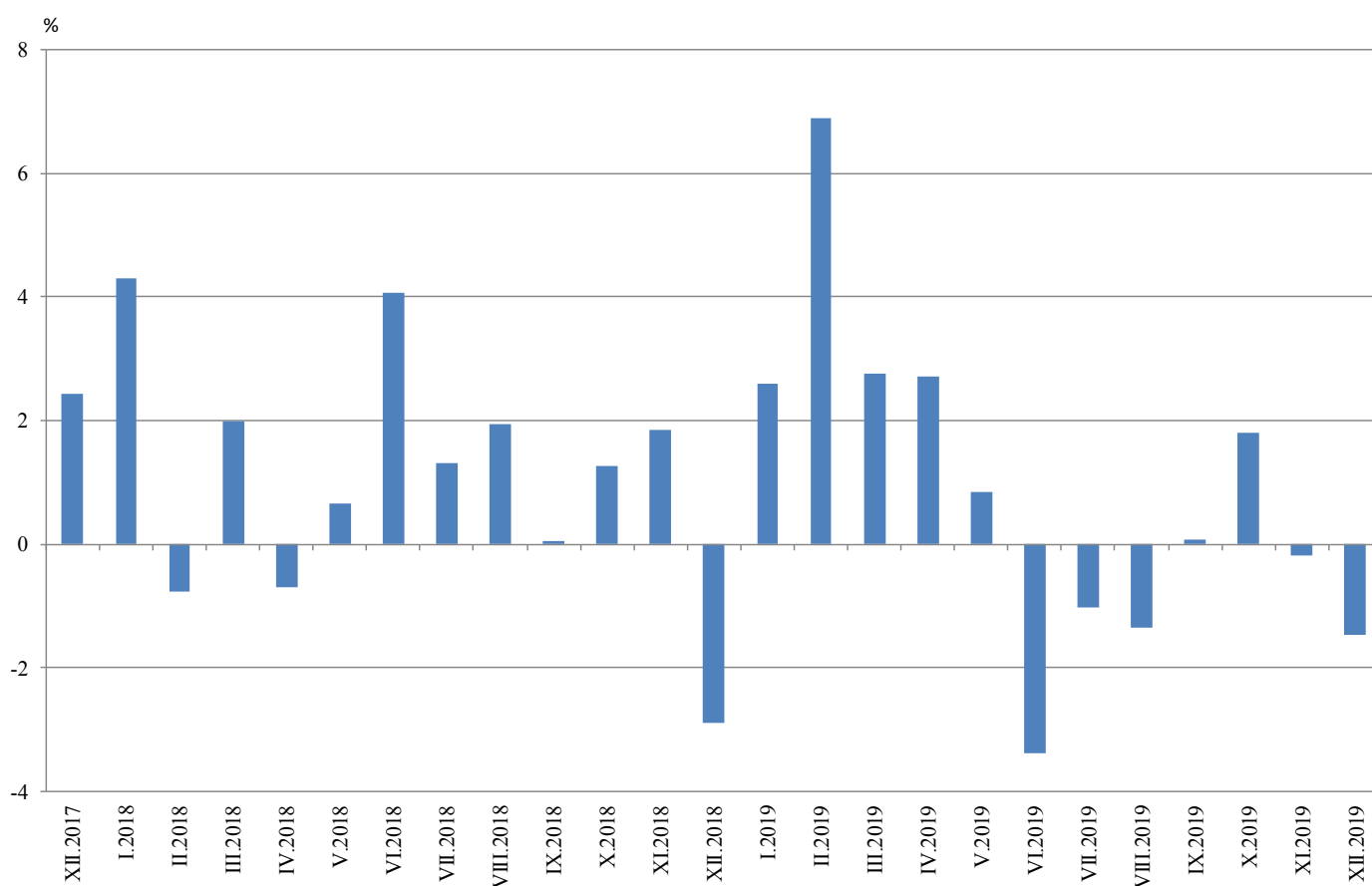


Annual changes

On annual basis in December 2019 Industrial Production Index calculated from working day adjusted data rose in the mining and quarrying industry by 4.6%, while the production fell in the electricity, gas, steam and air conditioning supply by 9.3% and in the manufacturing by 0.1%.

In the manufacturing, the more considerable decreases compared to the same month of the previous year were registered in the manufacture of tobacco products by 32.4%, in the repair and installation of machinery and equipment by 17.1%, in the manufacture of basic pharmaceutical products and pharmaceutical preparations by 16.1%, in the manufacture of machinery and equipment n.e.c. by 14.1%. Major increases were seen in the manufacture of other transport equipment by 41.0%, in the manufacture of computer, electronic and optical products by 32.2%, in the other manufacturing by 29.0%, in the manufacture of motor vehicles, trailers and semi-trailers by 10.4%.

Figure 3. Changes of Industrial Production Indices compared to the same month of the previous year (Working day adjusted)



Annex

Table 1

Changes of Industrial Production Indices compared to the previous month⁵

(Per cent)

Economic activities	NACE.BG - 2008	2019					
		VII	VIII	IX	X	XI	XII*
Industry	B_TO_E36	0.7	0.0	0.7	1.0	-1.3	-1.8
Mining and quarrying	B	7.1	-6.3	13.0	0.8	-3.4	4.1
Mining of coal and lignite	B05	4.8	-1.8	11.6	-11.1	-5.8	2.9
Extraction of crude petroleum and natural gas	B06
Mining of metal ores	B07	6.6	-14.9	22.5	8.4	-1.2	7.2
Other mining and quarrying	B08	11.9	-3.1	5.1	1.1	0.6	-7.3
Mining support service activities	B09
Manufacturing	C	-0.1	0.7	0.2	1.9	-0.6	-2.3
Manufacture of food products	C10	1.2	2.6	-2.7	6.2	-4.3	-0.7
Manufacture of beverages	C11	-1.3	3.3	-0.8	2.3	-5.8	-4.0
Manufacture of tobacco products	C12	35.7	-19.5	18.7	-2.5	1.3	-16.2
Manufacture of textiles	C13	-6.8	-0.5	9.2	-2.5	1.1	0.4
Manufacture of wearing apparel	C14	2.0	-2.4	3.1	-1.2	-1.9	-5.4
Manufacture of leather and related products	C15	-5.6	-5.6	8.5	7.2	8.1	-10.9
Manufacture of wood and of products of wood and cork, except furniture; manufacture of articles of straw and plaiting materials	C16	5.4	-4.6	9.1	-1.5	1.2	6.6
Manufacture of paper and paper products	C17	1.9	-3.1	-0.6	2.1	-2.4	-1.9
Printing and reproduction of recorded media	C18	-0.2	-5.0	-1.5	1.7	8.1	-13.1
Manufacture of coke and refined petroleum products	C19
Manufacture of chemicals and chemical products	C20	1.9	-6.9	3.8	3.7	-4.7	5.5
Manufacture of basic pharmaceutical products and pharmaceutical preparations	C21	7.3	-12.2	-3.3	2.6	9.7	-11.2
Manufacture of rubber and plastic products	C22	-1.1	0.7	-0.6	3.5	3.3	-0.7
Manufacture of other non-metallic mineral products	C23	0.2	-0.5	2.2	1.4	2.7	6.4
Manufacture of basic metals	C24	5.7	2.7	2.3	3.3	0.0	0.3
Manufacture of fabricated metal products, except machinery and equipment	C25	-1.5	6.8	-8.5	4.5	-2.8	-14.4
Manufacture of computer, electronic and optical products	C26	-2.9	8.8	-5.3	-0.7	2.0	11.8
Manufacture of electrical equipment	C27	-0.6	5.2	-3.0	-3.2	3.8	-5.1
Manufacture of machinery and equipment n.e.c.	C28	-2.5	-4.6	4.8	3.3	-5.0	-7.3
Manufacture of motor vehicles, trailers and semi-trailers	C29	2.4	0.9	1.9	-0.7	-1.2	-17.1
Manufacture of other transport equipment	C30	11.8	5.6	-4.9	5.1	8.4	-3.8
Manufacture of furniture	C31	0.1	-4.0	-2.6	0.9	1.6	-4.2
Other manufacturing	C32	11.0	-29.1	9.6	19.4	17.0	-0.5
Repair and installation of machinery and equipment	C33	-12.6	5.1	0.2	1.2	-12.2	-4.3
Electricity, gas, steam and air conditioning supply	D	1.1	-0.5	-1.3	-4.1	-0.8	0.4
Electricity, gas, steam and air conditioning supply	D35	1.1	-0.5	-1.3	-4.1	-0.8	0.4

⁵ Seasonally adjusted.

* Preliminary data.

„..“ - Confidential data.

Table 2

Changes of Industrial Production Indices compared to the same month of the previous year⁶
(Per cent)

Economic activities	NACE.BG - 2008	2019					
		VII	VIII	IX	X	XI	XII*
Industry	B_TO_E36	-1.0	-1.4	0.1	1.8	-0.2	-1.5
Mining and quarrying	B	4.7	-1.1	7.9	9.4	1.8	4.6
Mining of coal and lignite	B05	-5.8	-3.9	22.0	-11.8	-14.7	-19.3
Extraction of crude petroleum and natural gas	B06
Mining of metal ores	B07	5.1	-2.9	0.9	29.3	10.6	22.5
Other mining and quarrying	B08	15.6	3.6	-1.0	9.7	11.7	13.7
Mining support service activities	B09
Manufacturing	C	-1.3	-0.9	-0.1	2.6	1.6	-0.1
Manufacture of food products	C10	3.4	6.8	3.9	13.2	7.9	3.6
Manufacture of beverages	C11	4.6	7.2	-0.6	5.7	-6.0	-4.9
Manufacture of tobacco products	C12	-1.1	-24.6	-4.5	-28.1	-14.9	-32.4
Manufacture of textiles	C13	-6.9	-9.6	6.7	1.0	2.5	-1.0
Manufacture of wearing apparel	C14	-8.3	-11.8	-4.9	-2.4	-8.3	-8.5
Manufacture of leather and related products	C15	-4.5	-9.5	1.0	2.2	11.2	5.3
Manufacture of wood and of products of wood and cork, except furniture; manufacture of articles of straw and plaiting materials	C16	-1.4	-5.0	0.0	1.8	3.7	7.9
Manufacture of paper and paper products	C17	-4.5	-5.1	-7.1	-8.4	-5.2	-6.0
Printing and reproduction of recorded media	C18	18.3	6.7	8.4	5.7	21.4	3.1
Manufacture of coke and refined petroleum products	C19
Manufacture of chemicals and chemical products	C20	3.1	-8.7	3.0	-5.8	6.8	3.1
Manufacture of basic pharmaceutical products and pharmaceutical preparations	C21	13.7	-3.0	-19.3	-7.2	2.8	-16.1
Manufacture of rubber and plastic products	C22	-2.4	4.5	-0.7	2.3	3.7	0.9
Manufacture of other non-metallic mineral products	C23	3.5	-0.9	5.1	-0.4	0.9	9.7
Manufacture of basic metals	C24	-5.1	-10.4	-8.2	17.9	0.7	-12.6
Manufacture of fabricated metal products, except machinery and equipment	C25	-19.7	-5.3	3.6	-0.9	-7.2	3.9
Manufacture of computer, electronic and optical products	C26	5.0	14.3	3.1	4.9	13.2	32.2
Manufacture of electrical equipment	C27	7.4	4.7	6.0	0.0	3.3	-1.3
Manufacture of machinery and equipment n.e.c.	C28	1.0	-5.9	-3.6	-2.0	-6.7	-14.1
Manufacture of motor vehicles, trailers and semi-trailers	C29	5.1	5.5	5.5	2.7	-1.9	10.4
Manufacture of other transport equipment	C30	25.8	51.8	25.7	5.7	15.9	41.0
Manufacture of furniture	C31	-2.6	-2.1	-8.1	-5.5	-3.8	-6.8
Other manufacturing	C32	29.4	-9.5	-0.1	36.5	33.2	29.0
Repair and installation of machinery and equipment	C33	-3.9	-10.4	-3.9	2.0	-8.0	-17.1
Electricity, gas, steam and air conditioning supply	D	-2.9	-4.5	-3.8	-6.8	-9.6	-9.3
Electricity, gas, steam and air conditioning supply	D35	-2.9	-4.5	-3.8	-6.8	-9.6	-9.3

⁶ Working day adjusted.

* Preliminary data.

„..“ - Confidential data.

Table 3

Industrial Production Indices
(Seasonally adjusted, 2015 = 100)

NACE.BG - 2008	2018	2019											
	XII	I	II	III	IV	V	VI	VII	VIII	IX	X	XI	XII*
B_TO_E36	106.4	110.2	112.0	111.1	109.4	109.0	107.0	107.7	107.7	108.4	109.5	108.1	106.2
B	103.7	116.8	111.1	100.1	97.2	106.1	93.1	99.6	93.4	105.5	106.4	102.8	107.0
B05	97.5	113.0	98.9	91.2	79.4	94.7	76.0	79.6	78.1	87.2	77.5	73.0	75.1
B06
B07	117.4	119.3	117.4	105.9	112.8	116.1	113.0	120.4	102.4	125.4	135.9	134.2	143.8
B08	85.9	119.4	119.2	111.6	101.4	102.1	91.7	102.6	99.5	104.5	105.6	106.3	98.6
B09
C	111.6	116.9	119.5	117.6	115.4	114.5	113.1	113.0	113.7	113.9	116.1	115.4	112.8
C10	104.6	117.0	109.7	106.6	107.5	109.6	106.3	107.5	110.3	107.3	114.0	109.1	108.4
C11	100.0	108.3	109.6	104.9	102.6	102.6	104.6	103.2	106.7	105.8	108.2	101.8	97.7
C12	59.0	41.2	40.9	43.9	52.5	58.0	38.6	52.4	42.1	50.0	48.8	49.4	41.4
C13	103.7	110.7	95.8	94.7	85.9	89.3	99.7	92.9	92.5	100.9	98.4	99.5	99.9
C14	82.9	88.0	86.4	88.8	84.7	84.4	82.3	83.9	81.9	84.5	83.4	81.8	77.4
C15	86.7	92.4	97.4	96.7	93.8	110.1	93.7	88.5	83.5	90.6	97.1	105.0	93.6
C16	78.5	79.7	80.7	80.8	75.8	78.8	71.9	75.7	72.2	78.8	77.6	78.5	83.7
C17	100.3	106.8	100.8	100.6	101.6	103.1	97.9	99.8	96.7	96.1	98.2	95.9	94.1
C18	101.3	110.1	119.9	118.7	123.1	129.6	120.9	120.7	114.6	112.9	114.9	124.2	107.9
C19
C20	115.5	118.7	119.2	122.8	115.0	121.8	115.5	117.7	109.6	113.7	118.0	112.4	118.6
C21	124.9	115.4	115.3	118.9	116.0	118.0	118.6	127.2	111.7	108.0	110.9	121.6	108.0
C22	140.6	139.1	142.6	143.7	137.6	134.5	133.7	132.3	133.1	132.4	137.1	141.6	140.6
C23	115.2	121.1	119.9	119.5	108.4	108.5	108.2	108.4	107.8	110.2	111.8	114.7	122.0
C24	117.2	114.7	115.2	112.0	105.9	97.7	96.6	102.1	104.9	107.3	110.8	110.8	111.1
C25	94.0	120.9	142.1	122.6	117.3	116.0	119.8	118.1	126.1	115.4	120.6	117.2	100.3
C26	138.8	143.8	154.2	144.6	150.0	143.7	158.2	153.7	167.3	158.5	157.4	160.5	179.4
C27	120.6	127.6	131.3	129.4	133.5	128.8	125.9	125.2	131.7	127.8	123.8	128.5	122.0
C28	122.4	128.3	123.2	125.8	127.3	124.5	120.9	117.9	112.6	117.9	121.8	115.7	107.3
C29	111.8	141.7	147.6	147.2	152.3	151.5	142.3	145.8	147.1	149.9	148.8	147.1	122.0
C30	121.7	156.2	170.4	164.8	158.3	152.8	140.9	157.5	166.2	158.1	166.2	180.2	173.3
C31	105.3	107.0	109.0	106.1	98.9	105.9	107.6	107.6	103.3	100.7	101.6	103.2	98.9
C32	145.0	160.0	161.6	151.2	135.5	148.4	153.5	170.4	120.8	132.4	158.0	184.9	184.0
C33	129.6	143.5	147.8	127.8	139.3	127.4	138.6	121.1	127.2	127.5	129.0	113.3	108.4
D	90.6	91.3	89.9	91.0	88.1	89.3	87.8	88.7	88.2	87.1	83.5	82.8	83.2
35	90.6	91.3	89.9	91.0	88.1	89.3	87.8	88.7	88.2	87.1	83.5	82.8	83.2

* Preliminary data.

„...“ - Confidential data.

Industrial Production Indices
(Working day adjusted, 2015 = 100)

NACE.BG - 2008	2016	2017	2018	2019											
	XII	XII	XII	I	II	III	IV	V	VI	VII	VIII	IX	X	XI	XII*
B_TO_E36	110.9	113.6	110.3	105.1	106.6	113.9	104.1	105.5	109.1	111.0	103.6	107.1	113.1	114.9	108.7
B	117.4	109.2	111.6	114.1	104.8	93.9	88.5	99.4	89.4	98.3	91.1	109.9	120.7	111.4	116.6
B05	113.4	104.2	116.0	128.9	99.9	80.0	57.6	80.3	56.9	70.7	72.6	91.6	99.2	85.0	93.6
B06
B07	120.5	115.8	117.4	119.3	117.4	105.9	112.8	116.1	113.0	120.4	102.4	125.4	144.0	134.2	143.8
B08	85.6	93.2	86.5	76.1	91.3	101.0	101.1	107.6	100.0	111.7	107.5	115.1	121.5	119.6	98.3
B09
C	107.3	113.5	109.7	102.4	109.1	120.3	112.4	114.3	119.8	119.4	109.9	114.5	122.3	123.3	109.6
C10	104.2	115.7	109.2	99.2	94.9	104.8	102.7	107.9	109.2	109.0	113.7	115.0	125.6	116.6	113.1
C11	106.7	101.4	101.4	67.1	76.4	99.2	102.0	110.9	128.3	127.5	135.7	117.0	98.1	91.0	96.4
C12	94.0	56.3	63.4	19.0	18.5	40.5	47.4	67.6	41.3	56.9	35.0	48.7	57.0	56.0	42.9
C13	81.1	86.7	88.6	95.4	92.4	107.0	92.1	99.1	111.1	97.6	73.2	97.6	101.6	104.7	87.8
C14	94.8	95.4	80.8	91.3	84.4	88.9	76.7	76.9	88.4	97.8	79.2	83.1	82.9	83.6	74.0
C15	84.9	92.9	79.7	92.2	96.9	101.1	85.8	97.7	98.4	102.8	75.4	95.3	100.9	111.3	83.9
C16	80.1	81.5	73.5	64.2	70.5	79.8	74.6	79.7	76.9	81.9	71.7	83.0	85.6	84.9	79.3
C17	97.3	90.4	93.6	102.0	94.9	103.9	99.3	106.2	100.0	101.9	94.7	94.5	102.7	96.0	88.0
C18	109.2	107.7	109.2	98.9	111.8	121.8	120.0	129.9	123.5	119.8	106.7	109.7	120.8	140.8	112.5
C19
C20	99.6	124.6	112.3	109.8	111.1	132.3	117.6	121.8	119.4	120.5	105.6	113.6	120.0	114.1	115.8
C21	97.4	118.3	132.2	109.5	111.5	124.9	110.5	114.5	121.7	128.6	99.2	107.2	107.8	133.9	110.9
C22	95.2	107.6	120.7	122.7	129.8	148.1	137.0	136.0	142.7	140.5	126.5	135.0	150.9	150.2	121.8
C23	85.4	92.2	101.4	86.4	94.4	120.8	109.5	117.2	117.7	117.3	113.0	118.6	125.8	122.2	111.2
C24	91.6	115.4	113.7	107.6	110.3	120.9	106.9	92.2	89.5	116.0	99.2	96.2	122.7	120.7	99.4
C25	175.5	146.2	107.8	87.7	126.4	123.8	114.7	111.7	128.6	125.9	126.0	117.4	123.2	129.4	112.0
C26	117.4	138.9	144.6	133.6	144.5	154.7	148.4	138.8	168.6	157.3	150.0	154.3	165.5	168.3	191.1
C27	88.4	102.5	107.7	117.7	125.0	135.1	132.4	127.9	132.9	126.7	118.6	129.7	134.4	142.0	106.3
C28	106.5	120.6	118.3	114.8	117.7	132.9	129.2	124.4	128.8	123.1	97.4	115.5	127.4	125.3	101.6
C29	104.5	115.8	100.4	139.9	148.3	155.3	153.4	155.3	144.6	141.7	124.1	150.8	158.9	156.4	110.8
C30	91.5	89.1	108.8	147.1	177.6	193.2	167.0	168.4	142.1	145.5	135.6	133.4	162.7	192.3	153.3
C31	104.6	115.0	107.0	91.6	97.7	106.9	95.3	106.4	110.0	111.3	101.3	103.1	109.5	113.4	99.8
C32	120.7	129.3	129.3	142.5	142.4	153.6	130.9	147.2	174.4	170.8	119.5	137.3	175.0	200.0	166.9
C33	135.6	152.3	176.3	101.6	125.8	123.9	124.9	119.3	142.9	122.8	124.3	133.1	133.5	127.1	146.1
D	122.2	116.3	112.4	114.2	98.9	99.5	78.6	73.3	75.8	82.0	81.2	76.1	74.2	85.8	102.0
D35	122.2	116.3	112.4	114.2	98.9	99.5	78.6	73.3	75.8	82.0	81.2	76.1	74.2	85.8	102.0

* Preliminary data.

„..“ - Confidential data.