

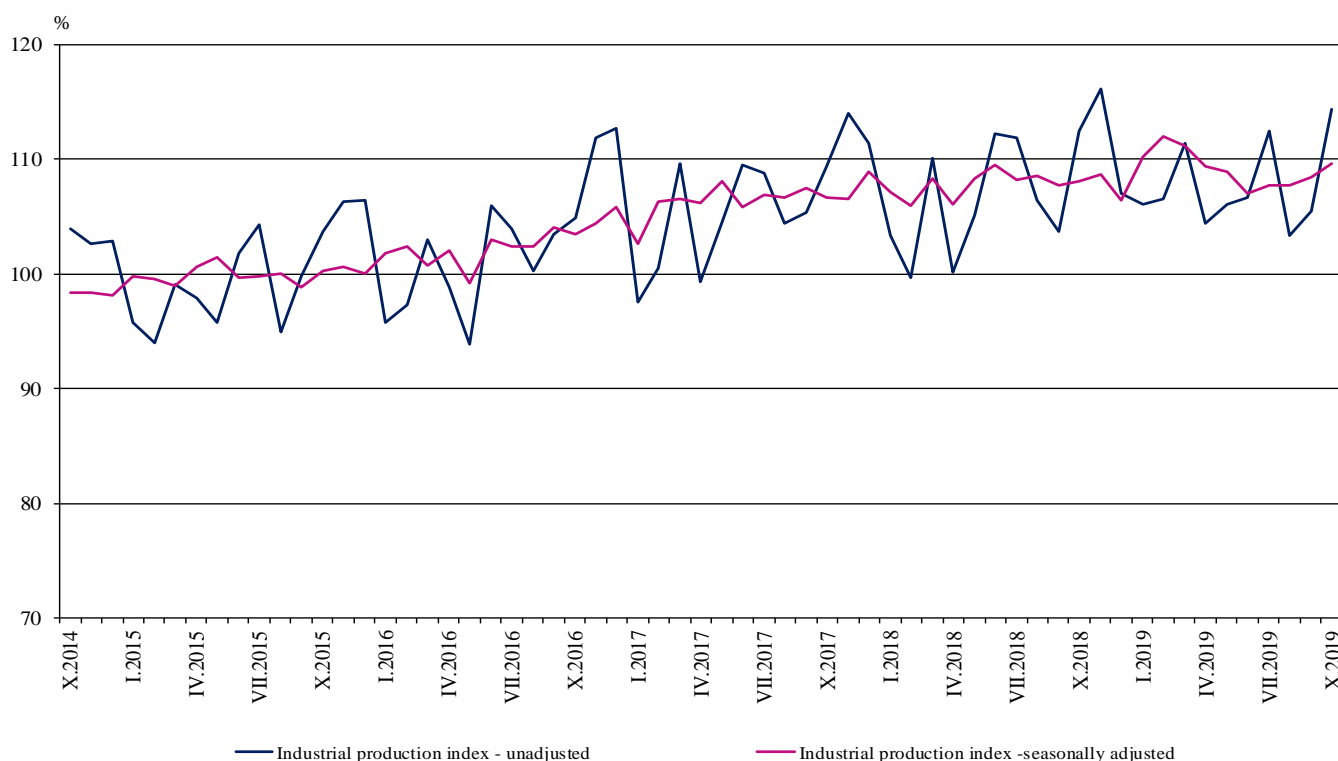


INDUSTRIAL PRODUCTION INDICES IN OCTOBER 2019¹

According to the preliminary data in October 2019 the Industrial Production Index², seasonally adjusted³, rose by 1.1% as compared to September 2019.

In October 2019 the working day adjusted⁴ Industrial Production Index increased by 1.7% in comparison with the same month of 2018.

Figure 1. Industrial Production Indices (2015 = 100)



¹ October 2019 data are preliminary. The final data on Industrial Production and Turnover Indices for September 2019 can be found on the NSI website: <http://www.nsi.bg/en>.

² Monthly Industrial Production and Industrial turnover indices measure changes in production and turnover values of industrial enterprises. This information can be used to assess the current economic development and for short-term forecasts. Indices do not measure the actual production level, it aims to measure the average change in value of production between two points of time. Indices are compiled on the base of information collected through representative sampling survey on industrial enterprises. The sample covers enterprises with annual turnover more than 97% of total turnover in industry.

Industrial production indices are calculated at constant base year that is to say they are weighted with the structure of the value added at factor costs in the base year.

³ Seasonal adjustment is a statistical method, which eliminates the seasonal component of time series.

⁴ Working day adjustment is an adjustment for variations caused by calendar effects, different number of calendar and working days in the months, national holidays and outliers (for example the presence of more non-working days in May could contribute to the decline in the production in some activities).

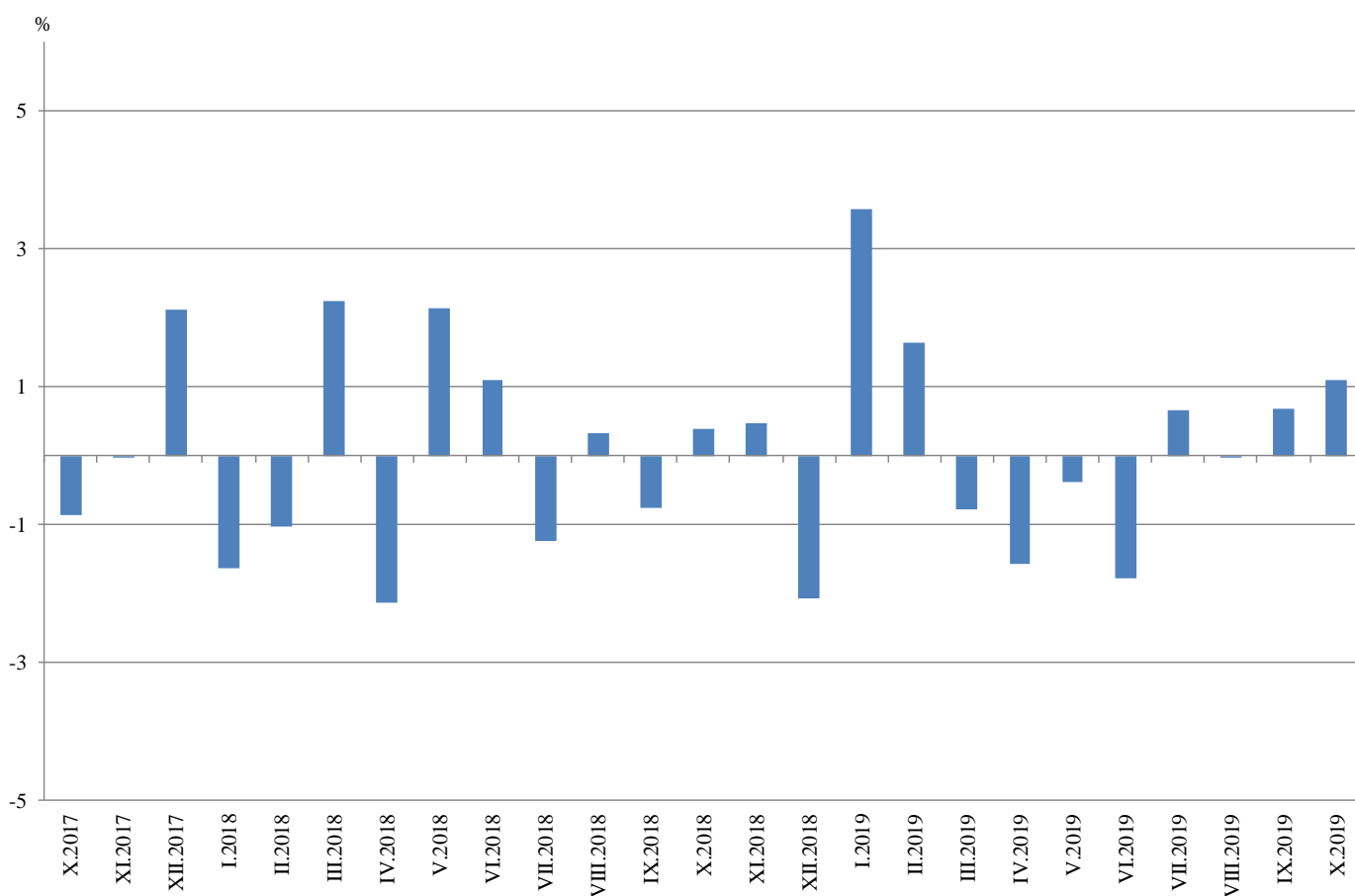


Monthly changes

In October 2019 as compared to September 2019, the seasonally adjusted Industrial Production Index went up in the manufacturing by 1.8% and in the mining and quarrying industry by 0.7%, while the production fell in the electricity, gas, steam and air conditioning supply by 4.6%.

The most significant production increases in the manufacturing were registered in the other manufacturing by 18.1%, in the manufacture of food products by 6.0%, in the manufacture of other transport equipment by 5.3%, in the manufacture of leather and related products and in the manufacture of fabricated metal products, except machinery and equipment by 4.4%. Important decreases were seen in the manufacture of electrical equipment by 3.3%, in the manufacture of textiles by 2.8%, in the manufacture of tobacco products by 2.0%.

**Figure 2. Changes of Industrial Production Indices compared to the previous month
(Seasonally adjusted)**



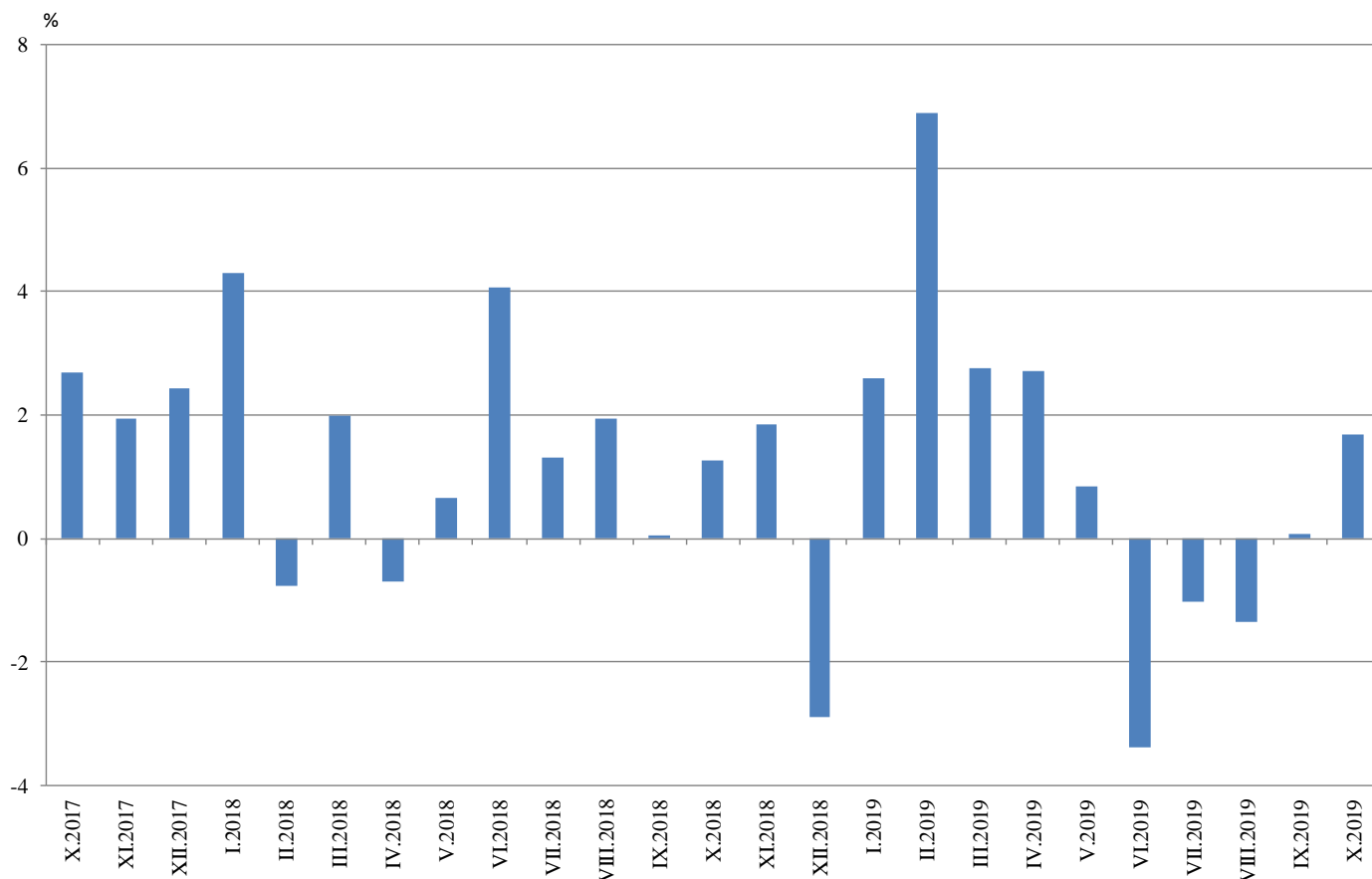


Annual changes

On annual basis in October 2019 Industrial Production Index calculated from working day adjusted data rose in the mining and quarrying industry by 9.4% and in the manufacturing by 2.5%, while the production fell in the electricity, gas, steam and air conditioning supply by 6.8%.

In the manufacturing, the more considerable increases compared to the same month of the previous year were registered in the other manufacturing by 36.3%, in the manufacture of basic metals by 17.9%, in the manufacture of food products by 13.0%, in the printing and reproduction of recorded media by 5.9%. Major decreases were seen in the manufacture of tobacco products by 28.1%, in the manufacture of paper and paper products by 8.4%, in the manufacture of basic pharmaceutical products and pharmaceutical preparations by 7.2%, in the manufacture of chemicals and chemical products by 5.9%.

Figure 3. Changes of Industrial Production Indices compared to the same month of the previous year (Working day adjusted)



Annex

Table 1
Changes of Industrial Production Indices compared to the previous month¹
(Per cent)

Economic activities	NACE.BG - 2008	2019					
		V	VI	VII	VIII	IX	X*
Industry	B_TO_E36	-0.4	-1.8	0.7	0.0	0.7	1.1
Mining and quarrying	B	9.2	-12.3	7.1	-6.3	13.0	0.7
Mining of coal and lignite	B05	19.2	-19.8	4.8	-1.8	11.6	-10.7
Extraction of crude petroleum and natural gas	B06
Mining of metal ores	B07	3.0	-2.7	6.6	-14.9	22.5	14.6
Other mining and quarrying	B08	0.7	-10.1	11.9	-3.1	5.1	1.0
Mining support service activities	B09
Manufacturing	C	-0.8	-1.2	-0.1	0.7	0.2	1.8
Manufacture of food products	C10	1.9	-3.0	1.2	2.6	-2.7	6.0
Manufacture of beverages	C11	-0.1	2.0	-1.3	3.3	-0.8	1.8
Manufacture of tobacco products	C12	10.6	-33.4	35.7	-19.5	18.7	-2.0
Manufacture of textiles	C13	4.0	11.5	-6.8	-0.5	9.2	-2.8
Manufacture of wearing apparel	C14	-0.4	-2.4	2.0	-2.4	3.1	-1.6
Manufacture of leather and related products	C15	17.4	-14.8	-5.6	-5.6	8.5	4.4
Manufacture of wood and of products of wood and cork, except furniture; manufacture of articles of straw and plaiting materials	C16	4.0	-8.8	5.4	-4.6	9.1	-1.2
Manufacture of paper and paper products	C17	1.4	-5.0	1.9	-3.1	-0.6	2.3
Printing and reproduction of recorded media	C18	5.3	-6.7	-0.2	-5.0	-1.5	1.1
Manufacture of coke and refined petroleum products	C19
Manufacture of chemicals and chemical products	C20	5.9	-5.1	1.9	-6.9	3.8	3.9
Manufacture of basic pharmaceutical products and pharmaceutical preparations	C21	1.7	0.5	7.3	-12.2	-3.3	2.2
Manufacture of rubber and plastic products	C22	-2.3	-0.6	-1.1	0.7	-0.6	3.0
Manufacture of other non-metallic mineral products	C23	0.1	-0.3	0.2	-0.5	2.2	1.1
Manufacture of basic metals	C24	-7.7	-1.1	5.7	2.7	2.3	2.8
Manufacture of fabricated metal products, except machinery and equipment	C25	-1.1	3.3	-1.5	6.8	-8.5	4.4
Manufacture of computer, electronic and optical products	C26	-4.2	10.1	-2.9	8.8	-5.3	-0.8
Manufacture of electrical equipment	C27	-3.5	-2.2	-0.6	5.2	-3.0	-3.3
Manufacture of machinery and equipment n.e.c.	C28	-2.2	-2.9	-2.5	-4.6	4.8	3.5
Manufacture of motor vehicles, trailers and semi-trailers	C29	-0.5	-6.1	2.4	0.9	1.9	-0.1
Manufacture of other transport equipment	C30	-3.5	-7.8	11.8	5.6	-4.9	5.3
Manufacture of furniture	C31	7.1	1.6	0.1	-4.0	-2.6	0.9
Other manufacturing	C32	9.5	3.5	11.0	-29.1	9.6	18.1
Repair and installation of machinery and equipment	C33	-8.5	8.8	-12.6	5.1	0.2	1.5
Electricity, gas, steam and air conditioning supply	D	1.4	-1.7	1.1	-0.5	-1.3	-4.6
Electricity, gas, steam and air conditioning supply	D35	1.4	-1.7	1.1	-0.5	-1.3	-4.6

¹ Seasonally adjusted

* Preliminary data

„...“ - Confidential data

Table 2

Changes of Industrial Production Indices compared to the same month of the previous year¹
(Per cent)

Economic activities	NACE.BG - 2008	2019					
		V	VI	VII	VIII	IX	X*
Industry	B_TO_E36	0.9	-3.4	-1.0	-1.4	0.1	1.7
Mining and quarrying	B	9.8	-19.8	4.7	-1.1	7.9	9.4
Mining of coal and lignite	B05	11.5	-33.5	-5.8	-3.9	22.0	-11.8
Extraction of crude petroleum and natural gas	B06
Mining of metal ores	B07	10.7	-19.5	5.1	-2.9	0.9	29.0
Other mining and quarrying	B08	-0.1	-12.9	15.6	3.6	-1.0	9.7
Mining support service activities	B09
Manufacturing	C	0.9	-1.5	-1.3	-0.9	-0.1	2.5
Manufacture of food products	C10	3.1	2.7	3.4	6.8	3.9	13.0
Manufacture of beverages	C11	-3.4	0.6	4.6	7.2	-0.6	4.4
Manufacture of tobacco products	C12	-0.3	-47.9	-1.1	-24.6	-4.5	-28.1
Manufacture of textiles	C13	-6.9	7.2	-6.9	-9.6	6.7	0.8
Manufacture of wearing apparel	C14	-7.2	-10.6	-8.3	-11.8	-4.9	-2.9
Manufacture of leather and related products	C15	7.9	-9.2	-4.5	-9.5	1.0	1.2
Manufacture of wood and of products of wood and cork, except furniture; manufacture of articles of straw and plaiting materials	C16	-4.1	-9.3	-1.4	-5.0	0.0	2.4
Manufacture of paper and paper products	C17	1.0	-9.5	-4.5	-5.1	-7.1	-8.4
Printing and reproduction of recorded media	C18	22.8	15.5	18.3	6.7	8.4	5.9
Manufacture of coke and refined petroleum products	C19
Manufacture of chemicals and chemical products	C20	6.9	-2.6	3.1	-8.7	3.0	-5.9
Manufacture of basic pharmaceutical products and pharmaceutical preparations	C21	6.3	4.5	13.7	-3.0	-19.3	-7.2
Manufacture of rubber and plastic products	C22	0.3	1.0	-2.4	4.5	-0.7	2.3
Manufacture of other non-metallic mineral products	C23	0.6	0.0	3.5	-0.9	5.1	-0.5
Manufacture of basic metals	C24	-16.8	-20.6	-5.1	-10.4	-8.2	17.9
Manufacture of fabricated metal products, except machinery and equipment	C25	-13.9	-3.9	-19.7	-5.3	3.6	-1.1
Manufacture of computer, electronic and optical products	C26	4.8	10.9	5.0	14.3	3.1	4.8
Manufacture of electrical equipment	C27	8.6	5.3	7.4	4.7	6.0	-0.1
Manufacture of machinery and equipment n.e.c.	C28	8.2	2.7	1.0	-5.9	-3.6	-2.1
Manufacture of motor vehicles, trailers and semi-trailers	C29	9.4	-3.2	5.1	5.5	5.5	3.2
Manufacture of other transport equipment	C30	20.2	-0.8	25.8	51.8	25.7	5.7
Manufacture of furniture	C31	-8.2	-2.9	-2.6	-2.1	-8.1	-5.5
Other manufacturing	C32	8.2	8.9	29.4	-9.5	-0.1	36.3
Repair and installation of machinery and equipment	C33	5.6	3.6	-3.9	-10.4	-3.9	2.0
Electricity, gas, steam and air conditioning supply	D	-3.5	-5.2	-2.9	-4.5	-3.8	-6.8
Electricity, gas, steam and air conditioning supply	D35	-3.5	-5.2	-2.9	-4.5	-3.8	-6.8

¹ Working day adjusted

* Preliminary data

...“ - Confidential data

Table 3

Industrial Production Indices
(Seasonally adjusted, 2015 = 100)

NACE.BG - 2008	2018			2019									
	X	XI	XII	I	II	III	IV	V	VI	VII	VIII	IX	X*
B_TO_E36	108.1	108.6	106.4	110.2	112.0	111.1	109.4	109.0	107.0	107.7	107.7	108.4	109.6
B	97.7	101.0	103.7	116.8	111.1	100.1	97.2	106.1	93.1	99.6	93.4	105.5	106.3
B05	90.7	86.4	97.5	113.0	98.9	91.2	79.4	94.7	76.0	79.6	78.1	87.2	77.9
B06
B07	111.4	121.3	117.4	119.3	117.4	105.9	112.8	116.1	113.0	120.4	102.4	125.4	143.7
B08	96.4	95.7	85.9	119.4	119.2	111.6	101.4	102.1	91.7	102.6	99.5	104.5	105.5
B09
C	113.6	114.2	111.6	116.9	119.5	117.6	115.4	114.5	113.1	113.0	113.7	113.9	116.0
C10	101.0	101.1	104.6	117.0	109.7	106.6	107.5	109.6	106.3	107.5	110.3	107.3	113.8
C11	103.7	107.9	100.0	108.3	109.6	104.9	102.6	102.6	104.6	103.2	106.7	105.8	107.7
C12	70.3	60.8	59.0	41.2	40.9	43.9	52.5	58.0	38.6	52.4	42.1	50.0	49.0
C13	99.1	99.4	103.7	110.7	95.8	94.7	85.9	89.3	99.7	92.9	92.5	100.9	98.2
C14	85.6	90.2	82.9	88.0	86.4	88.8	84.7	84.4	82.3	83.9	81.9	84.5	83.2
C15	95.1	97.3	86.7	92.4	97.4	96.7	93.8	110.1	93.7	88.5	83.5	90.6	94.6
C16	76.3	75.7	78.5	79.7	80.7	80.8	75.8	78.8	71.9	75.7	72.2	78.8	77.9
C17	108.1	100.5	100.3	106.8	100.8	100.6	101.6	103.1	97.9	99.8	96.7	96.1	98.4
C18	106.2	102.9	101.3	110.1	119.9	118.7	123.1	129.6	120.9	120.7	114.6	112.9	114.2
C19
C20	125.1	105.1	115.5	118.7	119.2	122.8	115.0	121.8	115.5	117.7	109.6	113.7	118.2
C21	115.8	121.8	124.9	115.4	115.3	118.9	116.0	118.0	118.6	127.2	111.7	108.0	110.4
C22	133.6	138.4	140.6	139.1	142.6	143.7	137.6	134.5	133.7	132.3	133.1	132.4	136.4
C23	111.3	112.4	115.2	121.1	119.9	119.5	108.4	108.5	108.2	108.4	107.8	110.2	111.4
C24	107.4	111.0	117.2	114.7	115.2	112.0	105.9	97.7	96.6	102.1	104.9	107.3	110.3
C25	121.3	126.6	94.0	120.9	142.1	122.6	117.3	116.0	119.8	118.1	126.1	115.4	120.4
C26	149.6	141.0	138.8	143.8	154.2	144.6	150.0	143.7	158.2	153.7	167.3	158.5	157.3
C27	121.1	125.2	120.6	127.6	131.3	129.4	133.5	128.8	125.9	125.2	131.7	127.8	123.6
C28	125.4	124.6	122.4	128.3	123.2	125.8	127.3	124.5	120.9	117.9	112.6	117.9	122.0
C29	144.3	148.6	111.8	141.7	147.6	147.2	152.3	151.5	142.3	145.8	147.1	149.9	149.7
C30	158.2	160.4	121.7	156.2	170.4	164.8	158.3	152.8	140.9	157.5	166.2	158.1	166.5
C31	107.1	107.8	105.3	107.0	109.0	106.1	98.9	105.9	107.6	107.6	103.3	100.7	101.7
C32	115.7	141.7	145.0	160.0	161.6	151.2	135.5	148.4	153.5	170.4	120.8	132.4	156.3
C33	126.0	121.0	129.6	143.5	147.8	127.8	139.3	127.4	138.6	121.1	127.2	127.5	129.5
D	87.8	90.1	90.6	91.3	89.9	91.0	88.1	89.3	87.8	88.7	88.2	87.1	83.1
35	87.8	90.1	90.6	91.3	89.9	91.0	88.1	89.3	87.8	88.7	88.2	87.1	83.1

* Preliminary data
 „...“ - Confidential data

Table 4

Industrial Production Indices
(Working day adjusted, 2015 = 100)

NACE.BG - 2008	2016	2017	2018			2019									
	X	X	X	XI	XII	I	II	III	IV	V	VI	VII	VIII	IX	X*
B_TO_E36	106.8	109.7	111.0	115.1	110.3	105.1	106.6	113.9	104.1	105.5	109.1	111.0	103.6	107.1	112.9
B	112.2	118.1	110.4	109.4	111.6	114.1	104.8	93.9	88.5	99.4	89.4	98.3	91.1	109.9	120.7
B05	115.4	115.8	112.5	99.6	116.0	128.9	99.9	80.0	57.6	80.3	56.9	70.7	72.6	91.6	99.2
B06
B07	110.1	125.2	111.4	121.3	117.4	119.3	117.4	105.9	112.8	116.1	113.0	120.4	102.4	125.4	143.7
B08	96.5	98.4	110.7	107.2	86.5	76.1	91.3	101.0	101.1	107.6	100.0	111.7	107.5	115.1	121.5
B09
C	110.6	116.3	119.2	121.3	109.7	102.4	109.1	120.3	112.4	114.3	119.8	119.4	109.9	114.5	122.2
C10	113.4	115.5	110.9	108.0	109.2	99.2	94.9	104.8	102.7	107.9	109.2	109.0	113.7	115.0	125.3
C11	93.6	89.8	92.8	96.8	101.4	67.1	76.4	99.2	102.0	110.9	128.3	127.5	135.7	117.0	96.9
C12	74.2	63.1	79.3	65.9	63.4	19.0	18.5	40.5	47.4	67.6	41.3	56.9	35.0	48.7	57.0
C13	104.6	102.5	100.6	102.1	88.6	95.4	92.4	107.0	92.1	99.1	111.1	97.6	73.2	97.6	101.4
C14	105.6	96.9	84.9	91.1	80.8	91.3	84.4	88.9	76.7	76.9	88.4	97.8	79.2	83.1	82.4
C15	96.2	96.3	98.7	100.1	79.7	92.2	96.9	101.1	85.8	97.7	98.4	102.8	75.4	95.3	99.9
C16	98.2	92.5	84.1	81.9	73.5	64.2	70.5	79.8	74.6	79.7	76.9	81.9	71.7	83.0	86.1
C17	105.2	105.4	112.1	101.3	93.6	102.0	94.9	103.9	99.3	106.2	100.0	101.9	94.7	94.5	102.7
C18	113.3	109.9	114.3	116.0	109.2	98.9	111.8	121.8	120.0	129.9	123.5	119.8	106.7	109.7	121.0
C19
C20	115.0	122.6	127.3	106.8	112.3	109.8	111.1	132.3	117.6	121.8	119.4	120.5	105.6	113.6	119.8
C21	108.6	102.1	116.2	130.2	132.2	109.5	111.5	124.9	110.5	114.5	121.7	128.6	99.2	107.2	107.9
C22	124.0	137.0	147.6	144.9	120.7	122.7	129.8	148.1	137.0	136.0	142.7	140.5	126.5	135.0	150.9
C23	107.5	116.7	126.3	121.1	101.4	86.4	94.4	120.8	109.5	117.2	117.7	117.3	113.0	118.6	125.7
C24	118.5	124.7	104.1	119.9	113.7	107.6	110.3	120.9	106.9	92.2	89.5	116.0	99.2	96.2	122.7
C25	114.9	139.3	124.4	139.5	107.8	87.7	126.4	123.8	114.7	111.7	128.6	125.9	126.0	117.4	123.0
C26	126.8	139.8	157.8	148.7	144.6	133.6	144.5	154.7	148.4	138.8	168.6	157.3	150.0	154.3	165.3
C27	113.4	122.3	134.5	137.5	107.7	117.7	125.0	135.1	132.4	127.9	132.9	126.7	118.6	129.7	134.4
C28	105.5	123.7	130.0	134.2	118.3	114.8	117.7	132.9	129.2	124.4	128.8	123.1	97.4	115.5	127.3
C29	118.5	138.1	154.7	159.4	100.4	139.9	148.3	155.3	153.4	155.3	144.6	141.7	124.1	150.8	159.6
C30	77.8	90.8	153.9	165.9	108.8	147.1	177.6	193.2	167.0	168.4	142.1	145.5	135.6	133.4	162.7
C31	118.2	108.2	115.9	117.9	107.0	91.6	97.7	106.9	95.3	106.4	110.0	111.3	101.3	103.1	109.5
C32	134.1	143.2	128.2	150.2	129.3	142.5	142.4	153.6	130.9	147.2	174.4	170.8	119.5	137.3	174.8
C33	101.6	94.4	130.9	138.1	176.3	101.6	125.8	123.9	124.9	119.3	142.9	122.8	124.3	133.1	133.5
D	91.5	83.9	79.7	94.9	112.4	114.2	98.9	99.5	78.6	73.3	75.8	82.0	81.2	76.1	74.2
D35	91.5	83.9	79.7	94.9	112.4	114.2	98.9	99.5	78.6	73.3	75.8	82.0	81.2	76.1	74.2

* Preliminary data
 „...“ - Confidential data