

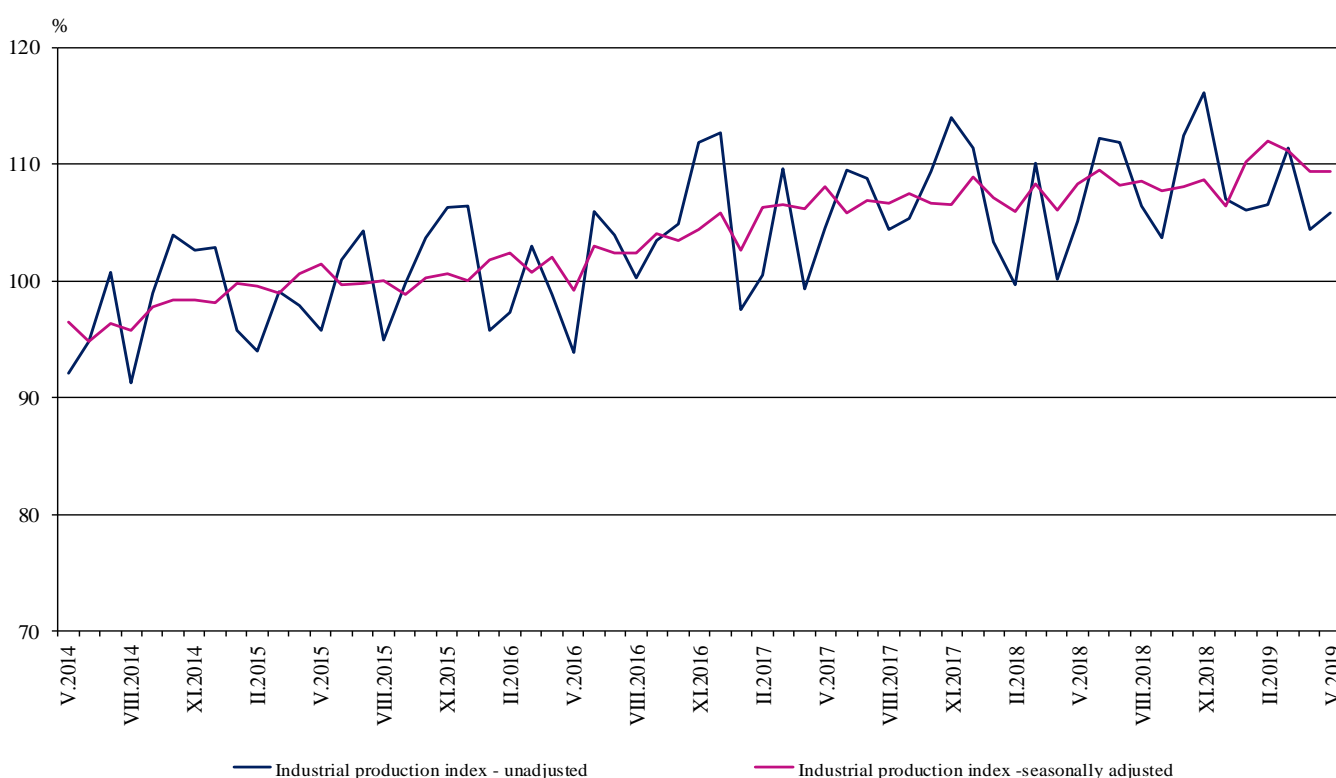


INDUSTRIAL PRODUCTION INDICES IN MAY 2019¹

According to the preliminary data in May 2019 the Industrial Production Index², seasonally adjusted³, remained at the level of April 2019.

In May 2019 the working day adjusted⁴ Industrial Production Index rose by 0.6% in comparison with the same month of 2018.

Figure 1. Industrial Production Indices (2015 = 100)



¹ May 2019 data are preliminary. The final data on Industrial Production and Turnover Indices for April 2019 can be found on the NSI website: <http://www.nsi.bg/en>.

² Monthly Industrial Production and Industrial turnover indices measure changes in production and turnover values of industrial enterprises. This information can be used to assess the current economic development and for short-term forecasts. Indices do not measure the actual production level, it aims to measure the average change in value of production between two points of time. Indices are compiled on the base of information collected through representative sampling survey on industrial enterprises. The sample covers enterprises with annual turnover more than 97% of total turnover in industry.

Industrial production indices are calculated at constant base year that is to say they are weighted with the structure of the value added at factor costs in the base year.

³ Seasonal adjustment is a statistical method, which eliminates the seasonal component of time series.

⁴ Working day adjustment is an adjustment for variations caused by calendar effects, different number of calendar and working days in the months, national holidays and outliers (for example the presence of more non-working days in May could contribute to the decline in the production in some activities).

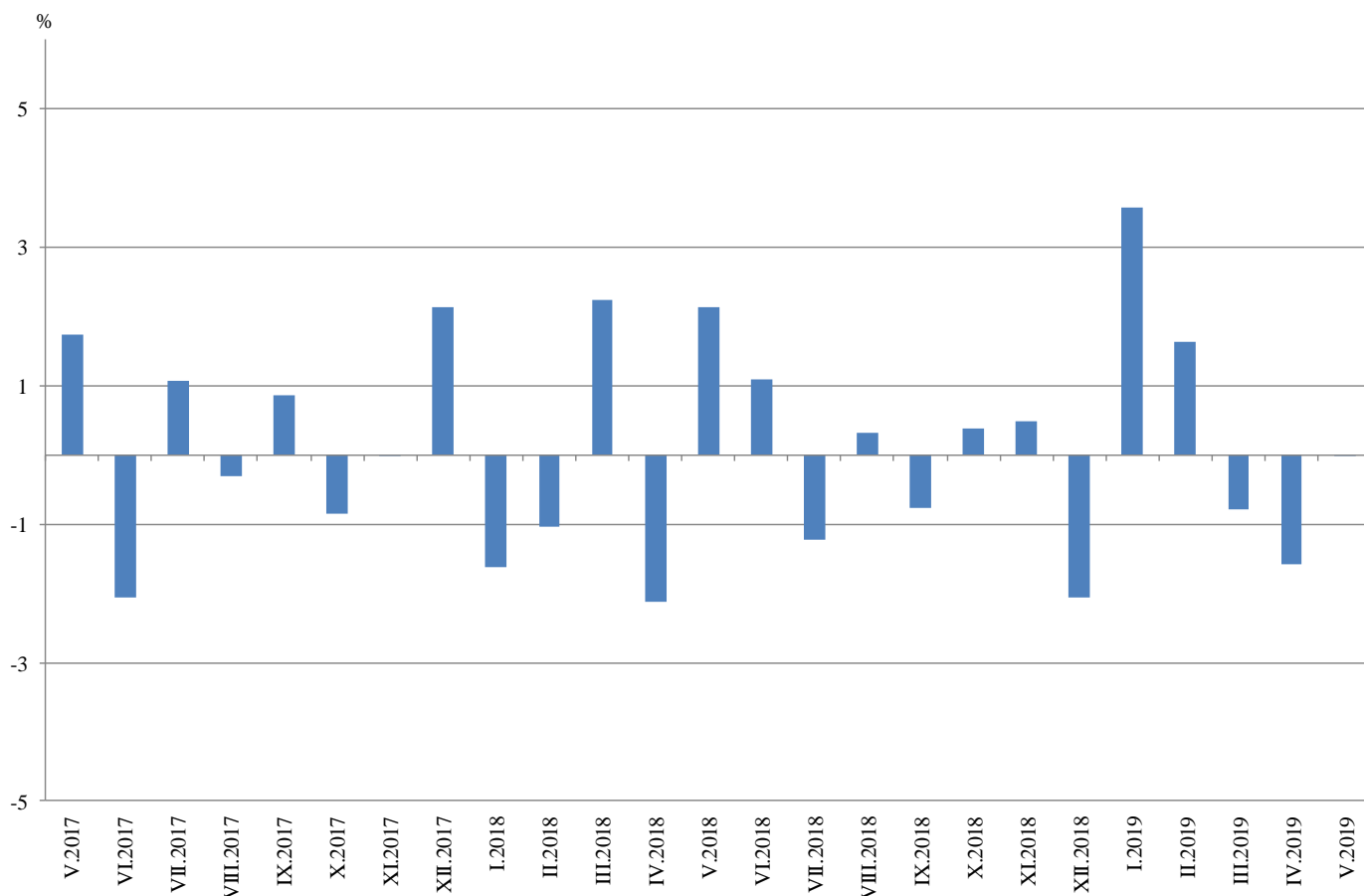


Monthly changes

In May 2019 as compared to April 2019, the seasonally adjusted Industrial Production Index increased in the mining and quarrying industry by 9.5%, while the production fell in the manufacturing by 0.4% and in the electricity, gas, steam and air conditioning supply by 0.1%.

The most significant production decreases in the manufacturing were registered in the repair and installation of machinery and equipment by 8.4%, in the manufacture of computer, electronic and optical products by 4.4%, in the manufacture of basic metals by 3.9%. Major increases were seen in the manufacture of tobacco products by 15.4%, in the manufacture of leather and related products by 11.3%, in the manufacture of furniture by 7.1%, in the manufacture of chemicals and chemical products by 6.0%.

**Figure 2. Changes of Industrial Production Indices compared to the previous month
(Seasonally adjusted)**



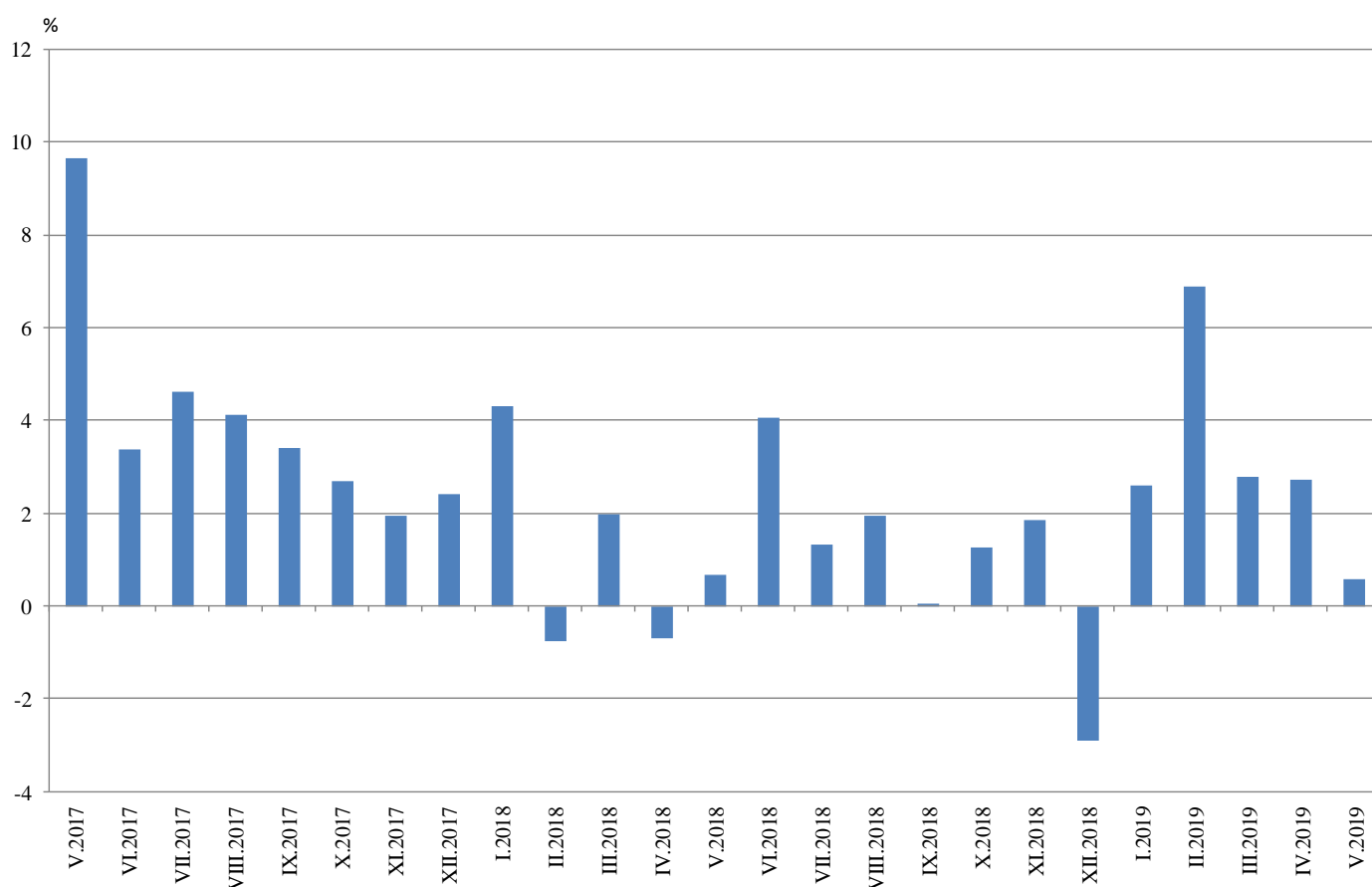


Annual changes

On annual basis in May 2019 Industrial Production Index calculated from working day adjusted data rose in the mining and quarrying industry by 9.7% and in the manufacturing by 0.9%, while the production went down in the electricity, gas, steam and air conditioning supply by 5.4%.

In the manufacturing, the more considerable increases compared to the same month of the previous year were registered in the printing and reproduction of recorded media by 22.8%, in the manufacture of other transport equipment by 20.4%, in the manufacture of leather and related products by 11.6%, in the manufacture of motor vehicles, trailers and semi-trailers by 10.0%. Important decreases were seen in the manufacture of basic metals by 16.0%, in the manufacture of fabricated metal products, except machinery and equipment by 14.1%, in the manufacture of furniture by 8.2%, in the manufacture of wearing apparel by 7.3%.

Figure 3. Changes of Industrial Production Indices compared to the same month of the previous year (Working day adjusted)



Annex

Table 1
Changes of Industrial Production Indices compared to the previous month^{1,2}
(Per cent)

Economic activities	NACE.BG - 2008	2018	2019				
		XII	I	II	III	IV	V
Industry	B_TO_E36	-2.1	3.6	1.6	-0.8	-1.6	0.0
Mining and quarrying	B	2.7	12.6	-4.9	-9.9	-3.0	9.5
Mining of coal and lignite	B05	12.8	15.9	-12.5	-7.9	-12.9	19.9
Extraction of crude petroleum and natural gas	B06
Mining of metal ores	B07	-3.2	1.6	-1.6	-9.9	6.5	2.8
Other mining and quarrying	B08	-10.3	39.1	-0.1	-6.4	-9.2	1.4
Mining support service activities	B09
Manufacturing	C	-2.3	4.8	2.2	-1.6	-1.9	-0.4
Manufacture of food products	C10	3.5	11.9	-6.3	-2.8	0.8	1.9
Manufacture of beverages	C11	-7.4	8.4	1.2	-4.2	-2.2	-1.1
Manufacture of tobacco products	C12	-3.0	-30.3	-0.6	7.3	19.5	15.4
Manufacture of textiles	C13	4.4	6.7	-13.5	-1.1	-9.3	3.9
Manufacture of wearing apparel	C14	-8.1	6.1	-1.8	2.7	-4.6	0.1
Manufacture of leather and related products	C15	-10.9	6.6	5.4	-0.7	-3.1	11.3
Manufacture of wood and of products of wood and cork, except furniture; manufacture of articles of straw and plaiting materials	C16	3.7	1.6	1.1	0.2	-6.3	4.8
Manufacture of paper and paper products	C17	-0.1	6.5	-5.7	-0.2	1.0	1.5
Printing and reproduction of recorded media	C18	-1.5	8.7	8.9	-0.9	3.7	5.4
Manufacture of coke and refined petroleum products	C19
Manufacture of chemicals and chemical products	C20	9.9	2.8	0.4	3.0	-6.3	6.0
Manufacture of basic pharmaceutical products and pharmaceutical preparations	C21	2.6	-7.6	-0.1	3.1	-2.4	0.9
Manufacture of rubber and plastic products	C22	1.6	-1.1	2.5	0.8	-4.2	-2.0
Manufacture of other non-metallic mineral products	C23	2.5	5.1	-1.0	-0.4	-9.3	0.8
Manufacture of basic metals	C24	5.6	-2.1	0.4	-2.8	-5.4	-3.9
Manufacture of fabricated metal products, except machinery and equipment	C25	-25.7	28.6	17.6	-13.7	-4.3	-1.4
Manufacture of computer, electronic and optical products	C26	-1.6	3.6	7.3	-6.3	3.7	-4.4
Manufacture of electrical equipment	C27	-3.7	5.8	2.9	-1.5	3.2	-3.1
Manufacture of machinery and equipment n.e.c.	C28	-1.7	4.8	-3.9	2.1	1.2	-1.5
Manufacture of motor vehicles, trailers and semi-trailers	C29	-24.8	26.8	4.1	-0.3	3.5	0.6
Manufacture of other transport equipment	C30	-24.2	28.4	9.1	-3.3	-4.0	-2.8
Manufacture of furniture	C31	-2.4	1.6	1.9	-2.7	-6.8	7.1
Other manufacturing	C32	2.3	10.3	1.1	-6.4	-10.4	9.2
Repair and installation of machinery and equipment	C33	7.1	10.7	3.0	-13.6	9.0	-8.4
Electricity, gas, steam and air conditioning supply	D	0.5	0.8	-1.5	1.1	-3.2	-0.1
Electricity, gas, steam and air conditioning supply	D35	0.5	0.8	-1.5	1.1	-3.2	-0.1

¹ Seasonally adjusted.

² ‘.’ - Confidential data.

Table 2

Changes of Industrial Production Indices compared to the same month of the previous year^{1,2}
(Per cent)

Economic activities	NACE.BG - 2008	2018	2019				
		XII	I	II	III	IV	V
Industry	B_TO_E36	-2.9	2.6	6.9	2.8	2.7	0.6
Mining and quarrying	B	2.2	16.6	16.0	2.0	-1.4	9.7
Mining of coal and lignite	B05	11.4	36.4	34.1	-2.7	6.1	11.7
Extraction of crude petroleum and natural gas	B06
Mining of metal ores	B07	1.4	2.9	4.0	-2.3	-7.1	10.5
Other mining and quarrying	B08	-7.2	7.8	15.2	22.0	-3.3	-0.1
Mining support service activities	B09
Manufacturing	C	-3.4	2.9	9.6	5.5	4.7	0.9
Manufacture of food products	C10	-5.6	7.6	6.8	-4.1	4.4	3.0
Manufacture of beverages	C11	0.0	7.6	15.2	5.6	3.3	-3.9
Manufacture of tobacco products	C12	12.7	-44.1	-42.5	-32.4	-14.7	-0.2
Manufacture of textiles	C13	2.2	19.0	-0.7	-6.0	-12.6	-6.0
Manufacture of wearing apparel	C14	-15.3	-3.9	-7.9	-5.3	-6.6	-7.3
Manufacture of leather and related products	C15	-14.2	1.2	-0.6	-6.3	-2.2	11.6
Manufacture of wood and of products of wood and cork, except furniture; manufacture of articles of straw and plaiting materials	C16	-9.7	-8.6	1.0	2.8	-8.5	-3.8
Manufacture of paper and paper products	C17	3.5	0.9	-2.2	0.0	1.2	0.2
Printing and reproduction of recorded media	C18	1.3	4.7	25.3	16.2	18.1	22.8
Manufacture of coke and refined petroleum products	C19
Manufacture of chemicals and chemical products	C20	-9.9	2.9	7.9	11.0	3.4	6.9
Manufacture of basic pharmaceutical products and pharmaceutical preparations	C21	11.7	3.8	8.3	6.5	5.7	6.1
Manufacture of rubber and plastic products	C22	12.2	8.6	13.7	15.6	10.8	0.2
Manufacture of other non-metallic mineral products	C23	9.9	8.4	13.8	20.1	-1.7	0.9
Manufacture of basic metals	C24	-1.5	-14.9	4.8	0.3	-6.9	-16.0
Manufacture of fabricated metal products, except machinery and equipment	C25	-26.3	-6.8	13.1	-8.9	2.3	-14.1
Manufacture of computer, electronic and optical products	C26	4.1	2.3	11.5	-3.6	9.1	4.8
Manufacture of electrical equipment	C27	5.1	14.0	23.6	13.9	17.2	8.4
Manufacture of machinery and equipment n.e.c.	C28	-1.9	6.5	5.8	9.0	6.1	8.5
Manufacture of motor vehicles, trailers and semi-trailers	C29	-13.3	4.5	12.9	10.5	11.7	10.0
Manufacture of other transport equipment	C30	22.0	18.2	40.3	29.2	23.5	20.4
Manufacture of furniture	C31	-6.9	-6.8	-2.7	-6.1	-10.2	-8.2
Other manufacturing	C32	0.0	13.8	19.3	15.7	-10.1	8.1
Repair and installation of machinery and equipment	C33	15.7	20.4	24.7	3.1	14.3	5.8
Electricity, gas, steam and air conditioning supply	D	-3.3	-1.9	-5.4	-7.6	-5.0	-5.4
Electricity, gas, steam and air conditioning supply	D35	-3.3	-1.9	-5.4	-7.6	-5.0	-5.4

¹ Working day adjusted.

² ‘..’ - Confidential data.

Table 3

Industrial Production Indices¹
(Seasonally adjusted, 2015 = 100)

NACE.BG - 2008	2018								2019				
	V	VI	VII	VIII	IX	X	XI	XII	I	II	III	IV	V
B_TO_E36	108.3	109.5	108.2	108.5	107.7	108.1	108.6	106.4	110.2	112.0	111.1	109.4	109.4
B	96.8	115.6	95.1	93.9	98.4	97.7	101.0	103.7	116.8	111.1	100.1	97.2	106.4
B05	87.7	102.8	82.4	79.6	71.1	90.7	86.4	97.5	113.0	98.9	91.2	79.4	95.2
B06
B07	104.9	140.3	114.6	105.4	124.3	111.4	121.3	117.4	119.3	117.4	105.9	112.8	115.9
B08	102.5	103.2	88.8	95.4	105.7	96.4	95.7	85.9	119.4	119.2	111.6	101.4	102.9
B09
C	112.9	113.7	113.1	114.2	113.0	113.6	114.2	111.6	116.9	119.5	117.6	115.4	114.9
C10	106.3	103.4	103.9	103.4	103.1	101.0	101.1	104.6	117.0	109.7	106.6	107.5	109.5
C11	105.2	104.1	97.2	101.5	106.2	103.7	107.9	100.0	108.3	109.6	104.9	102.6	101.6
C12	61.4	66.4	53.2	48.3	52.3	70.3	60.8	59.0	41.2	40.9	43.9	52.5	60.5
C13	93.7	94.2	100.3	102.2	96.5	99.1	99.4	103.7	110.7	95.8	94.7	85.9	89.2
C14	91.2	91.0	92.0	91.9	89.5	85.6	90.2	82.9	88.0	86.4	88.8	84.7	84.8
C15	104.0	102.2	92.6	88.6	88.6	95.1	97.3	86.7	92.4	97.4	96.7	93.8	104.3
C16	82.7	78.4	76.8	75.2	79.1	76.3	75.7	78.5	79.7	80.7	80.8	75.8	79.4
C17	103.0	105.9	104.6	101.0	101.7	108.1	100.5	100.3	106.8	100.8	100.6	101.6	103.1
C18	107.8	105.0	102.0	106.4	102.7	106.2	102.9	101.3	110.1	119.9	118.7	123.1	129.8
C19
C20	114.2	118.3	113.8	118.7	110.2	125.1	105.1	115.5	118.7	119.2	122.8	115.0	121.9
C21	111.1	111.4	115.6	114.2	128.7	115.8	121.8	124.9	115.4	115.3	118.9	116.0	117.1
C22	132.6	131.0	133.7	126.1	131.5	133.6	138.4	140.6	139.1	142.6	143.7	137.6	134.9
C23	107.2	107.8	105.2	106.9	106.1	111.3	112.4	115.2	121.1	119.9	119.5	108.4	109.3
C24	112.3	113.8	114.6	114.8	109.4	107.4	111.0	117.2	114.7	115.2	112.0	105.9	101.7
C25	134.3	124.7	145.9	133.8	110.6	121.3	126.6	94.0	120.9	142.1	122.6	117.3	115.7
C26	135.3	144.1	145.8	148.8	153.9	149.6	141.0	138.8	143.8	154.2	144.6	150.0	143.4
C27	118.5	118.6	113.7	126.9	120.2	121.1	125.2	120.6	127.6	131.3	129.4	133.5	129.3
C28	115.0	116.9	115.9	116.9	121.3	125.4	124.6	122.4	128.3	123.2	125.8	127.3	125.3
C29	139.8	144.4	138.2	138.9	142.4	144.3	148.6	111.8	141.7	147.6	147.2	152.3	153.3
C30	122.3	132.9	124.5	115.5	123.3	158.2	160.4	121.7	156.2	170.4	164.8	158.3	153.9
C31	115.7	111.1	111.1	105.3	108.8	107.1	107.8	105.3	107.0	109.0	106.1	98.9	105.9
C32	136.7	140.8	134.4	129.6	130.6	115.7	141.7	145.0	160.0	161.6	151.2	135.5	148.0
C33	119.7	134.3	124.3	141.1	131.7	126.0	121.0	129.6	143.5	147.8	127.8	139.3	127.5
D	92.0	91.6	91.0	92.2	90.5	87.8	90.1	90.6	91.3	89.9	91.0	88.1	88.0
D35	92.0	91.6	91.0	92.2	90.5	87.8	90.1	90.6	91.3	89.9	91.0	88.1	88.0

¹ '..' - Confidential data.

Table 4

Industrial Production Indices¹
(Working day adjusted, 2015 = 100)

NACE.BG - 2008	2016	2017	2018								2019				
	V	V	V	VI	VII	VIII	IX	X	XI	XII	I	II	III	IV	V
B_TO_E36	94.7	103.9	104.6	112.9	112.1	105.0	107.0	111.0	115.1	110.3	105.1	106.6	113.9	104.1	105.2
B	91.4	98.4	90.6	111.5	93.9	92.1	101.9	110.4	109.4	111.6	114.1	104.8	93.9	88.5	99.4
B05	72.4	92.5	72.0	85.5	75.1	75.5	75.1	112.5	99.6	116.0	128.9	99.9	80.0	57.6	80.4
B06
B07	103.5	105.8	104.9	140.3	114.6	105.4	124.3	111.4	121.3	117.4	119.3	117.4	105.9	112.8	115.9
B08	95.4	84.7	107.8	114.7	96.6	103.8	116.3	110.7	107.2	86.5	76.1	91.3	101.0	101.1	107.7
B09
C	98.5	111.8	113.2	121.6	121.0	111.0	114.6	119.2	121.3	109.7	102.4	109.1	120.3	112.4	114.2
C10	100.7	103.4	104.7	106.4	105.4	106.4	110.7	110.9	108.0	109.2	99.2	94.9	104.8	102.7	107.9
C11	103.3	104.1	114.8	127.5	121.9	126.6	117.6	92.8	96.8	101.4	67.1	76.4	99.2	102.0	110.3
C12	54.4	85.7	67.7	79.4	57.5	46.5	51.0	79.3	65.9	63.4	19.0	18.5	40.5	47.4	67.6
C13	126.0	115.5	106.4	103.6	104.8	81.0	91.4	100.6	102.1	88.6	95.4	92.4	107.0	92.1	100.0
C14	95.9	89.4	82.9	98.9	106.6	89.7	87.4	84.9	91.1	80.8	91.3	84.4	88.9	76.7	76.8
C15	77.1	86.0	90.5	108.3	107.6	83.3	94.4	98.7	100.1	79.7	92.2	96.9	101.1	85.8	101.0
C16	90.5	91.5	83.1	84.8	83.0	75.4	83.0	84.1	81.9	73.5	64.2	70.5	79.8	74.6	80.0
C17	105.6	107.6	105.2	110.5	106.7	99.8	101.7	112.1	101.3	93.6	102.0	94.9	103.9	99.3	105.4
C18	94.2	102.6	105.7	107.0	101.2	100.0	101.2	114.3	116.0	109.2	98.9	111.8	121.8	120.0	129.9
C19
C20	101.5	117.9	113.9	122.6	116.9	115.6	110.2	127.3	106.8	112.3	109.8	111.1	132.3	117.6	121.8
C21	92.0	103.5	107.6	116.5	113.0	102.3	132.9	116.2	130.2	132.2	109.5	111.5	124.9	110.5	114.2
C22	106.8	120.7	135.6	141.2	144.0	121.1	136.0	147.6	144.9	120.7	122.7	129.8	148.1	137.0	135.9
C23	100.7	110.0	116.5	117.7	113.3	114.1	112.8	126.3	121.1	101.4	86.4	94.4	120.8	109.5	117.6
C24	81.4	114.7	110.8	112.7	122.3	110.7	104.7	104.1	119.9	113.7	107.6	110.3	120.9	106.9	93.1
C25	96.7	137.6	129.7	133.8	156.7	133.1	113.3	124.4	139.5	107.8	87.7	126.4	123.8	114.7	111.4
C26	105.1	118.9	132.4	152.0	149.7	131.2	149.6	157.8	148.7	144.6	133.6	144.5	154.7	148.4	138.8
C27	97.6	105.0	117.8	126.2	118.0	113.3	122.3	134.5	137.5	107.7	117.7	125.0	135.1	132.4	127.7
C28	94.9	127.6	115.0	125.4	121.9	103.5	119.8	130.0	134.2	118.3	114.8	117.7	132.9	129.2	124.8
C29	112.6	119.1	141.9	149.4	134.9	117.7	142.9	154.7	159.4	100.4	139.9	148.3	155.3	153.4	156.1
C30	105.4	110.4	140.1	143.3	115.7	89.4	106.1	153.9	165.9	108.8	147.1	177.6	193.2	167.0	168.7
C31	100.7	108.1	116.0	113.3	114.3	103.5	112.2	115.9	117.9	107.0	91.6	97.7	106.9	95.3	106.4
C32	117.6	125.3	136.0	160.2	132.0	132.0	137.5	128.2	150.2	129.3	142.5	142.4	153.6	130.9	147.0
C33	91.4	104.9	113.0	137.9	127.8	138.8	138.5	130.9	138.1	176.3	101.6	125.8	123.9	124.9	119.5
D	83.3	80.1	76.0	80.0	84.4	85.0	79.1	79.7	94.9	112.4	114.2	98.9	99.5	78.6	71.8
D35	83.3	80.1	76.0	80.0	84.4	85.0	79.1	79.7	94.9	112.4	114.2	98.9	99.5	78.6	71.8

¹ '..' - Confidential data.