

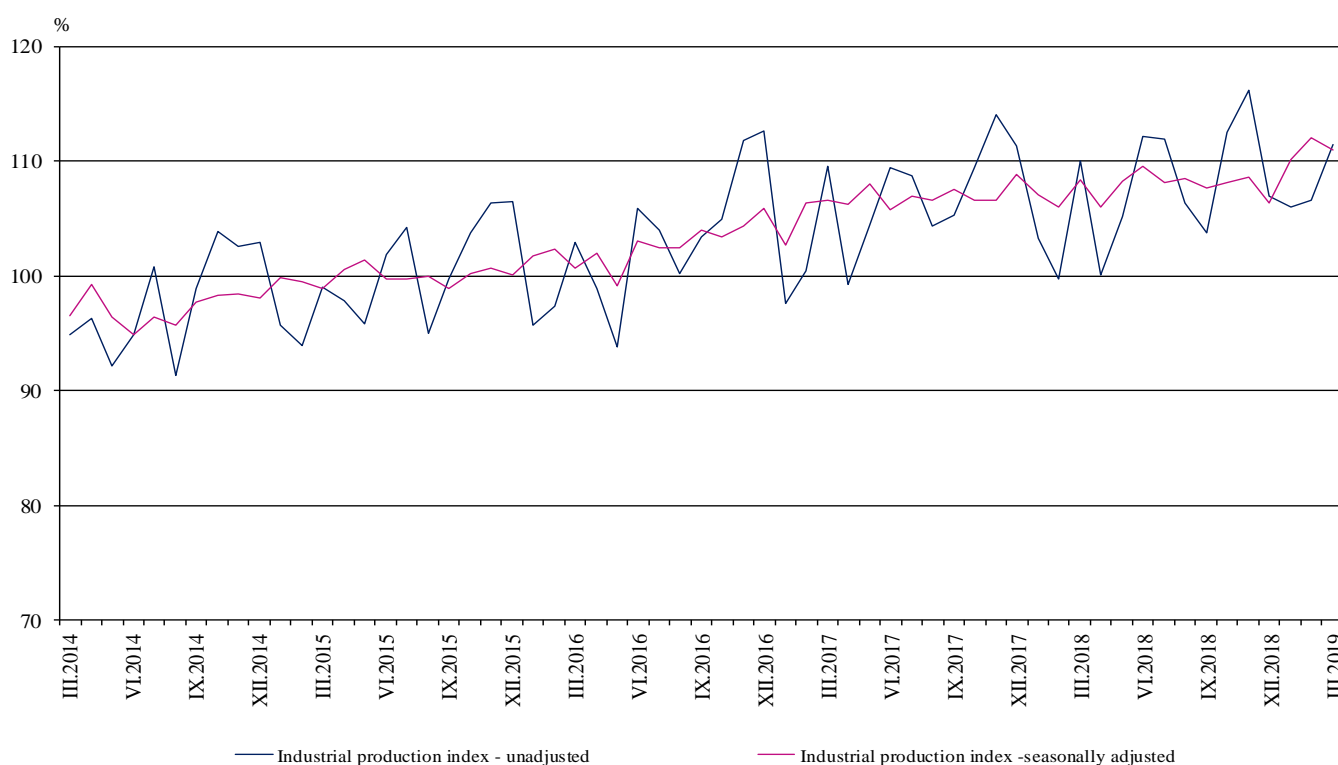


INDUSTRIAL PRODUCTION INDICES IN MARCH 2019¹

According to the preliminary data the Industrial Production Index², seasonally adjusted³, decreased by 0.9% in March 2019 as compared to February 2019.

In March 2019 the working day adjusted⁴ Industrial Production Index rose by 2.8% in comparison with the same month of 2018.

Figure 1. Industrial Production Indices (2015 = 100)



¹ March 2019 data are preliminary. The final data on Industrial Production and Turnover Indices for February 2019 can be found on the NSI website: <http://www.nsi.bg/en>.

² Monthly Industrial Production and Industrial turnover indices measure changes in production and turnover values of industrial enterprises. This information can be used to assess the current economic development and for short-term forecasts. Indices do not measure the actual production level, it aims to measure the average change in value of production between two points of time. Indices are compiled on the base of information collected through representative sampling survey on industrial enterprises. The sample covers enterprises with annual turnover more than 97% of total turnover in industry.

Industrial production indices are calculated at constant base year that is to say they are weighted with the structure of the value added at factor costs in the base year.

³ Seasonal adjustment is a statistical method, which eliminates the seasonal component of time series.

⁴ Working day adjustment is an adjustment for variations caused by calendar effects, different number of calendar and working days in the months, national holidays and outliers (for example the presence of more non-working days in May could contribute to the decline in the production in some activities).

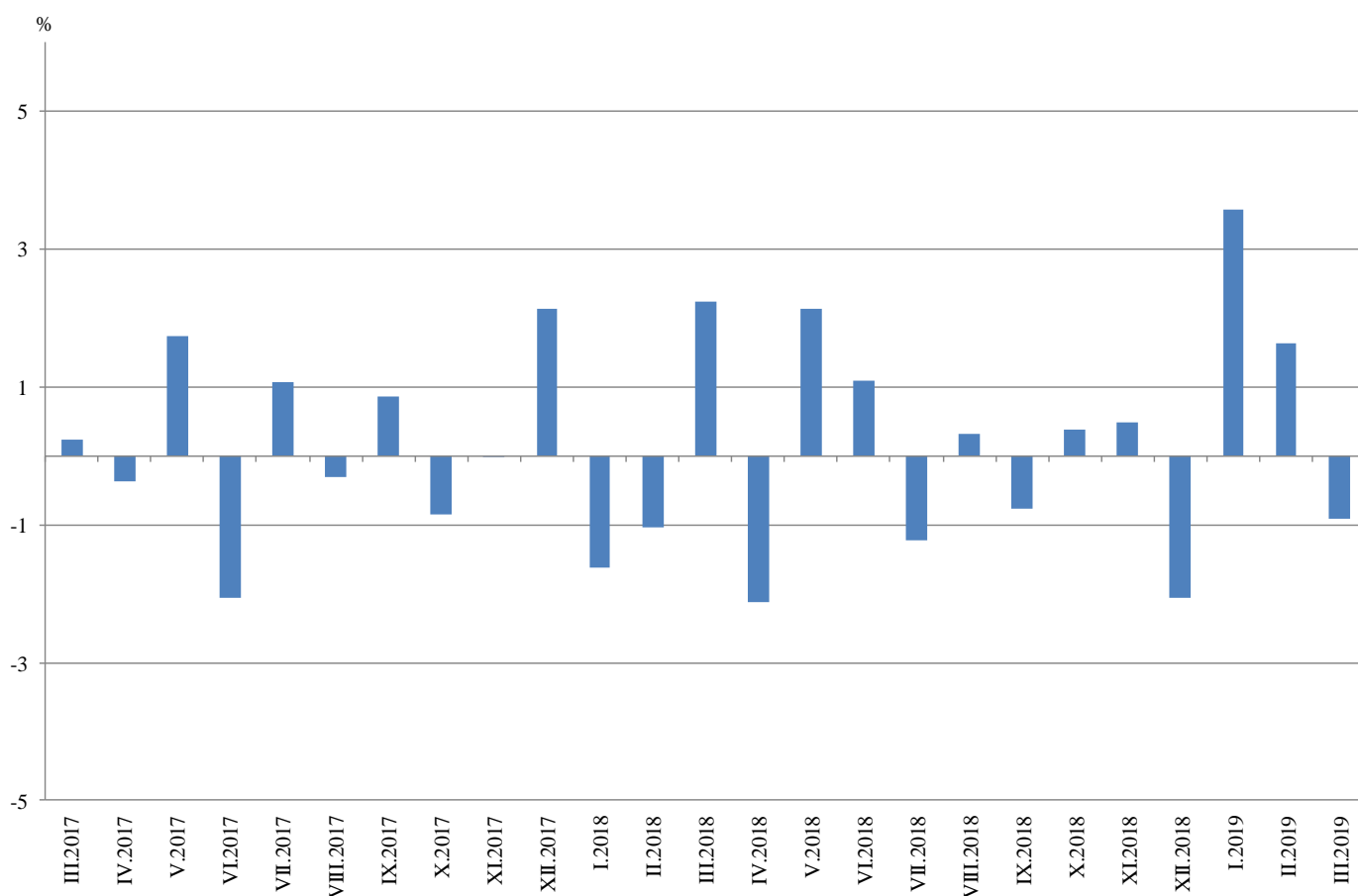


Monthly changes

In March 2019 as compared to February 2019, the seasonally adjusted Industrial Production Index decreased in the mining and quarrying industry by 10.9%, in the manufacturing by 1.2%, while the production rose in the electricity, gas, steam and air conditioning supply by 1.0%.

The most significant production decreases in the manufacturing were registered in the repair and installation of machinery and equipment by 12.2%, in the manufacture of fabricated metal products, except machinery and equipment by 11.8%, in the manufacture of computer, electronic and optical products by 7.1%. Major increases were seen in the manufacture of tobacco products by 12.5%, in the manufacture of wearing apparel and in the manufacture of other non-metallic mineral products by 2.8%.

**Figure 2. Changes of Industrial Production Indices compared to the previous month
(Seasonally adjusted)**



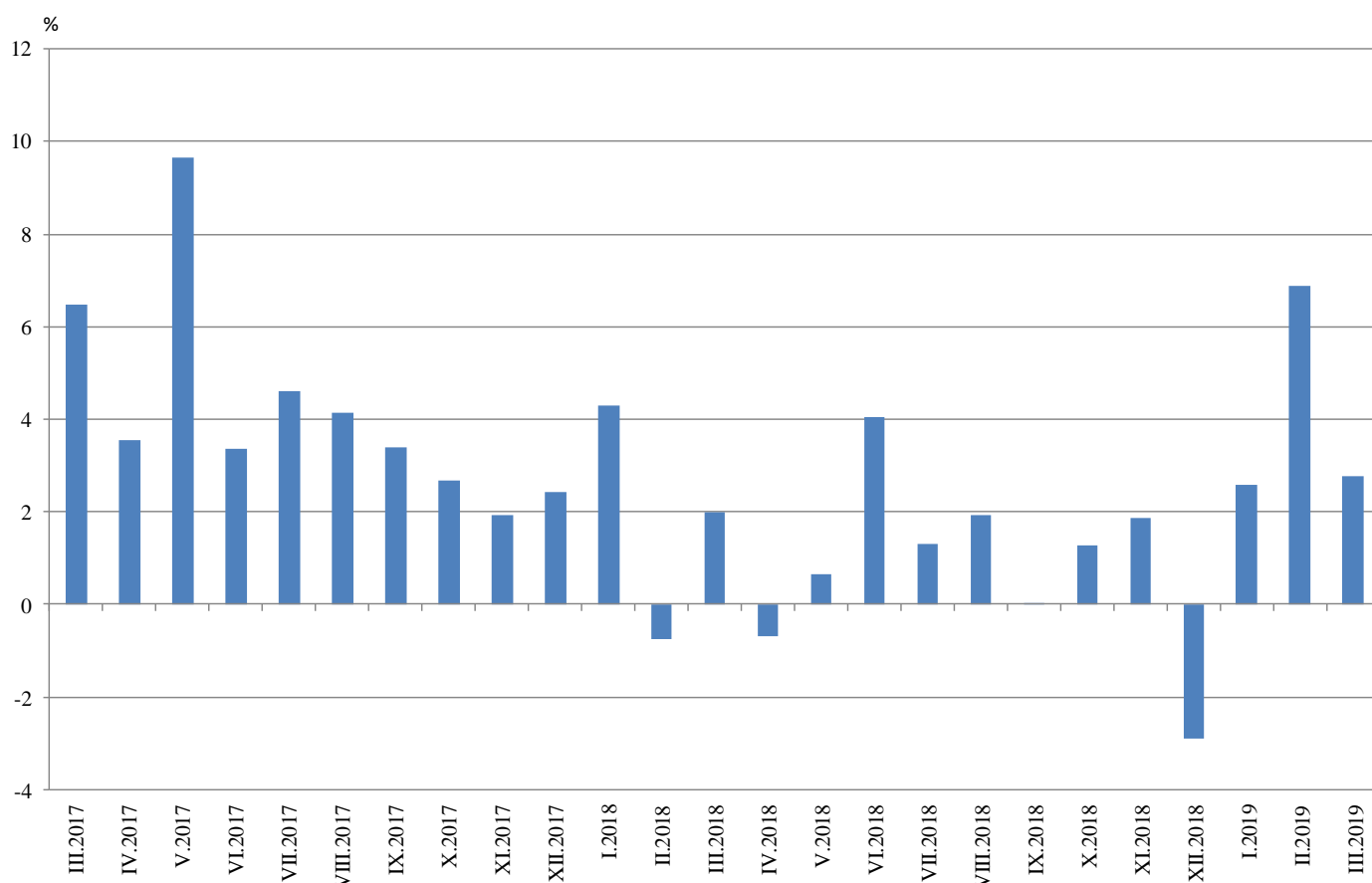


Annual changes

On annual basis in March 2019 Industrial Production Index calculated from working day adjusted data rose in the manufacturing by 5.5% and in the mining and quarrying industry by 2.0%, while the production went down in the electricity, gas, steam and air conditioning supply by 7.6%.

In the manufacturing, the more considerable increases compared to the same month of the previous year were registered in the manufacture of other transport equipment by 34.4%, in the manufacture of other non-metallic mineral products by 20.4%, in the printing and reproduction of recorded media by 15.8%, in the manufacture of rubber and plastic products by 15.2%. Important decreases were seen in the manufacture of tobacco products by 27.0%, in the manufacture of fabricated metal products, except machinery and equipment by 7.0%, in the manufacture of leather and related products by 6.9%, in the manufacture of furniture by 6.0%.

Figure 3. Changes of Industrial Production Indices compared to the same month of the previous year (Working day adjusted)



Annex

Table 1

Changes of Industrial Production Indices compared to the previous month^{1,2}

(Per cent)

Economic activities	NACE.BG - 2008	2018			2019		
		X	XI	XII	I	II	III
Industry	B_TO_E36	0.4	0.5	-2.1	3.6	1.6	-0.9
Mining and quarrying	B	-0.7	3.4	2.7	12.6	-4.9	-10.9
Mining of coal and lignite	B05	27.4	-4.7	12.8	15.9	-12.5	-7.5
Extraction of crude petroleum and natural gas	B06
Mining of metal ores	B07	-10.4	8.9	-3.2	1.6	-1.6	-10.0
Other mining and quarrying	B08	-8.9	-0.7	-10.3	39.1	-0.1	-3.1
Mining support service activities	B09
Manufacturing	C	0.5	0.5	-2.3	4.8	2.2	-1.2
Manufacture of food products	C10	-2.0	0.1	3.5	11.9	-6.3	-3.4
Manufacture of beverages	C11	-2.4	4.1	-7.4	8.4	1.2	-0.6
Manufacture of tobacco products	C12	34.5	-13.4	-3.0	-30.3	-0.6	12.5
Manufacture of textiles	C13	2.7	0.3	4.4	6.7	-13.5	2.6
Manufacture of wearing apparel	C14	-4.3	5.3	-8.1	6.1	-1.8	2.8
Manufacture of leather and related products	C15	7.3	2.3	-10.9	6.6	5.4	-1.3
Manufacture of wood and of products of wood and cork, except furniture; manufacture of articles of straw and plaiting materials	C16	-3.5	-0.9	3.7	1.6	1.1	0.9
Manufacture of paper and paper products	C17	6.3	-7.1	-0.1	6.5	-5.7	0.3
Printing and reproduction of recorded media	C18	3.4	-3.1	-1.5	8.7	8.9	-1.7
Manufacture of coke and refined petroleum products	C19
Manufacture of chemicals and chemical products	C20	13.5	-15.9	9.9	2.8	0.4	2.5
Manufacture of basic pharmaceutical products and pharmaceutical preparations	C21	-10.0	5.1	2.6	-7.6	-0.1	2.0
Manufacture of rubber and plastic products	C22	1.6	3.6	1.6	-1.1	2.5	1.1
Manufacture of other non-metallic mineral products	C23	4.9	1.0	2.5	5.1	-1.0	2.8
Manufacture of basic metals	C24	-1.8	3.3	5.6	-2.1	0.4	-1.0
Manufacture of fabricated metal products, except machinery and equipment	C25	9.7	4.3	-25.7	28.6	17.6	-11.8
Manufacture of computer, electronic and optical products	C26	-2.8	-5.8	-1.6	3.6	7.3	-7.1
Manufacture of electrical equipment	C27	0.7	3.4	-3.7	5.8	2.9	-1.8
Manufacture of machinery and equipment n.e.c.	C28	3.4	-0.7	-1.7	4.8	-3.9	1.6
Manufacture of motor vehicles, trailers and semi-trailers	C29	1.3	3.0	-24.8	26.8	4.1	-0.5
Manufacture of other transport equipment	C30	28.3	1.4	-24.2	28.4	9.1	-0.7
Manufacture of furniture	C31	-1.5	0.6	-2.4	1.6	1.9	-1.9
Other manufacturing	C32	-11.4	22.5	2.3	10.3	1.1	-11.6
Repair and installation of machinery and equipment	C33	-4.3	-4.0	7.1	10.7	3.0	-12.2
Electricity, gas, steam and air conditioning supply	D	-3.0	2.6	0.5	0.8	-1.5	1.0
Electricity, gas, steam and air conditioning supply	D35	-3.0	2.6	0.5	0.8	-1.5	1.0

¹ Seasonally adjusted.

² ‘.’ - Confidential data.

Table 2

Changes of Industrial Production Indices compared to the same month of the previous year^{1,2}

(Per cent)

Economic activities	NACE.BG - 2008	2018			2019		
		X	XI	XII	I	II	III
Industry	B_TO_E36	1.3	1.9	-2.9	2.6	6.9	2.8
Mining and quarrying	B	-6.6	-1.8	2.2	16.6	16.0	2.0
Mining of coal and lignite	B05	-2.8	7.1	11.4	36.4	34.1	-2.7
Extraction of crude petroleum and natural gas	B06
Mining of metal ores	B07	-11.0	-3.1	1.4	2.9	4.0	-2.4
Other mining and quarrying	B08	12.5	-0.6	-7.2	7.8	15.2	25.9
Mining support service activities	B09
Manufacturing	C	2.5	2.6	-3.4	2.9	9.6	5.5
Manufacture of food products	C10	-3.9	-4.1	-5.6	7.6	6.8	-4.7
Manufacture of beverages	C11	3.3	17.5	0.0	7.6	15.2	10.1
Manufacture of tobacco products	C12	25.7	5.3	12.7	-44.1	-42.5	-27.0
Manufacture of textiles	C13	-1.8	-4.8	2.2	19.0	-0.7	-3.0
Manufacture of wearing apparel	C14	-12.4	-8.3	-15.3	-3.9	-7.9	-5.9
Manufacture of leather and related products	C15	2.5	7.2	-14.2	1.2	-0.6	-6.9
Manufacture of wood and of products of wood and cork, except furniture; manufacture of articles of straw and plaiting materials	C16	-9.1	-10.5	-9.7	-8.6	1.0	3.3
Manufacture of paper and paper products	C17	6.3	-3.0	3.5	0.9	-2.2	0.4
Printing and reproduction of recorded media	C18	4.0	2.8	1.3	4.7	25.3	15.8
Manufacture of coke and refined petroleum products	C19
Manufacture of chemicals and chemical products	C20	3.9	-15.1	-9.9	2.9	7.9	10.3
Manufacture of basic pharmaceutical products and pharmaceutical preparations	C21	13.8	8.8	11.7	3.8	8.3	5.2
Manufacture of rubber and plastic products	C22	7.7	13.1	12.2	8.6	13.7	15.2
Manufacture of other non-metallic mineral products	C23	8.3	6.9	9.9	8.4	13.8	20.4
Manufacture of basic metals	C24	-16.5	-5.7	-1.5	-14.9	4.8	0.0
Manufacture of fabricated metal products, except machinery and equipment	C25	-10.7	-4.7	-26.3	-6.8	13.1	-7.0
Manufacture of computer, electronic and optical products	C26	12.8	2.8	4.1	2.3	11.5	-4.7
Manufacture of electrical equipment	C27	9.9	17.6	5.1	14.0	23.6	14.0
Manufacture of machinery and equipment n.e.c.	C28	5.1	4.1	-1.9	6.5	5.8	8.5
Manufacture of motor vehicles, trailers and semi-trailers	C29	12.0	17.3	-13.3	4.5	12.9	10.4
Manufacture of other transport equipment	C30	69.5	43.6	22.0	18.2	40.3	34.4
Manufacture of furniture	C31	7.1	6.1	-6.9	-6.8	-2.7	-6.0
Other manufacturing	C32	-10.4	3.2	0.0	13.8	19.3	8.1
Repair and installation of machinery and equipment	C33	38.7	11.0	15.7	20.4	24.7	5.1
Electricity, gas, steam and air conditioning supply	D	-5.1	-3.5	-3.3	-1.9	-5.4	-7.6
Electricity, gas, steam and air conditioning supply	D35	-5.1	-3.5	-3.3	-1.9	-5.4	-7.6

¹ Working day adjusted.

² ‘.’ - Confidential data.

Table 3

Industrial Production Indices¹
(Seasonally adjusted, 2015 = 100)

NACE.BG - 2008	2018										2019		
	III	IV	V	VI	VII	VIII	IX	X	XI	XII	I	II	III
B_TO_E36	108.4	106.1	108.3	109.5	108.2	108.5	107.7	108.1	108.6	106.4	110.2	112.0	111.0
B	96.2	95.9	96.8	115.6	95.1	93.9	98.4	97.7	101.0	103.7	116.8	111.1	99.1
B05	92.9	73.5	87.7	102.8	82.4	79.6	71.1	90.7	86.4	97.5	113.0	98.9	91.5
B06
B07	108.3	121.4	104.9	140.3	114.6	105.4	124.3	111.4	121.3	117.4	119.3	117.4	105.7
B08	92.3	104.1	102.5	103.2	88.8	95.4	105.7	96.4	95.7	85.9	119.4	119.2	115.5
B09
C	112.1	109.7	112.9	113.7	113.1	114.2	113.0	113.6	114.2	111.6	116.9	119.5	118.1
C10	111.0	102.7	106.3	103.4	103.9	103.4	103.1	101.0	101.1	104.6	117.0	109.7	106.0
C11	99.5	97.8	105.2	104.1	97.2	101.5	106.2	103.7	107.9	100.0	108.3	109.6	108.9
C12	56.3	58.4	61.4	66.4	53.2	48.3	52.3	70.3	60.8	59.0	41.2	40.9	46.0
C13	100.0	95.4	93.7	94.2	100.3	102.2	96.5	99.1	99.4	103.7	110.7	95.8	98.2
C14	95.3	90.1	91.2	91.0	92.0	91.9	89.5	85.6	90.2	82.9	88.0	86.4	88.8
C15	104.2	98.3	104.0	102.2	92.6	88.6	88.6	95.1	97.3	86.7	92.4	97.4	96.2
C16	79.1	82.3	82.7	78.4	76.8	75.2	79.1	76.3	75.7	78.5	79.7	80.7	81.4
C17	101.6	99.9	103.0	105.9	104.6	101.0	101.7	108.1	100.5	100.3	106.8	100.8	101.0
C18	103.6	105.4	107.8	105.0	102.0	106.4	102.7	106.2	102.9	101.3	110.1	119.9	117.9
C19
C20	111.3	110.8	114.2	118.3	113.8	118.7	110.2	125.1	105.1	115.5	118.7	119.2	122.2
C21	111.3	109.2	111.1	111.4	115.6	114.2	128.7	115.8	121.8	124.9	115.4	115.3	117.6
C22	125.6	123.4	132.6	131.0	133.7	126.1	131.5	133.6	138.4	140.6	139.1	142.6	144.2
C23	104.3	105.9	107.2	107.8	105.2	106.9	106.1	111.3	112.4	115.2	121.1	119.9	123.3
C24	114.0	111.2	112.3	113.8	114.6	114.8	109.4	107.4	111.0	117.2	114.7	115.2	114.1
C25	135.3	114.3	134.3	124.7	145.9	133.8	110.6	121.3	126.6	94.0	120.9	142.1	125.3
C26	148.8	137.8	135.3	144.1	145.8	148.8	153.9	149.6	141.0	138.8	143.8	154.2	143.2
C27	113.2	115.5	118.5	118.6	113.7	126.9	120.2	121.1	125.2	120.6	127.6	131.3	129.0
C28	115.2	120.4	115.0	116.9	115.9	116.9	121.3	125.4	124.6	122.4	128.3	123.2	125.2
C29	131.8	137.3	139.8	144.4	138.2	138.9	142.4	144.3	148.6	111.8	141.7	147.6	146.8
C30	129.3	129.0	122.3	132.9	124.5	115.5	123.3	158.2	160.4	121.7	156.2	170.4	169.2
C31	113.5	108.0	115.7	111.1	111.1	105.3	108.8	107.1	107.8	105.3	107.0	109.0	106.9
C32	131.3	148.7	136.7	140.8	134.4	129.6	130.6	115.7	141.7	145.0	160.0	161.6	142.8
C33	122.9	122.3	119.7	134.3	124.3	141.1	131.7	126.0	121.0	129.6	143.5	147.8	129.7
D	98.2	91.9	92.0	91.6	91.0	92.2	90.5	87.8	90.1	90.6	91.3	89.9	90.8
D35	98.2	91.9	92.0	91.6	91.0	92.2	90.5	87.8	90.1	90.6	91.3	89.9	90.8

¹ '...' - Confidential data.

Table 4

Industrial Production Indices¹
(Working day adjusted, 2015 = 100)

NACE.BG - 2008	2016	2017	2018										2019		
	III	III	III	IV	V	VI	VII	VIII	IX	X	XI	XII	I	II	III
B_TO_E36	102.0	108.7	110.8	101.4	104.6	112.9	112.1	105.0	107.0	111.0	115.1	110.3	105.1	106.6	113.9
B	96.9	101.0	92.0	89.7	90.6	111.5	93.9	92.1	101.9	110.4	109.4	111.6	114.1	104.8	93.9
B05	64.4	87.3	82.2	54.3	72.0	85.5	75.1	75.5	75.1	112.5	99.6	116.0	128.9	99.9	80.0
B06
B07	117.3	115.5	108.3	121.4	104.9	140.3	114.6	105.4	124.3	111.4	121.3	117.4	119.3	117.4	105.7
B08	88.7	73.3	82.8	104.5	107.8	114.7	96.6	103.8	116.3	110.7	107.2	86.5	76.1	91.3	104.3
B09
C	102.2	112.7	114.0	107.4	113.2	121.6	121.0	111.0	114.6	119.2	121.3	109.7	102.4	109.1	120.3
C10	97.9	101.0	109.3	98.4	104.7	106.4	105.4	106.4	110.7	110.9	108.0	109.2	99.2	94.9	104.2
C11	96.5	95.4	93.9	98.8	114.8	127.5	121.9	126.6	117.6	92.8	96.8	101.4	67.1	76.4	103.4
C12	91.3	82.2	59.9	55.6	67.7	79.4	57.5	46.5	51.0	79.3	65.9	63.4	19.0	18.5	43.7
C13	118.2	112.1	113.8	105.4	106.4	103.6	104.8	81.0	91.4	100.6	102.1	88.6	95.4	92.4	110.4
C14	95.7	102.4	93.9	82.1	82.9	98.9	106.6	89.7	87.4	84.9	91.1	80.8	91.3	84.4	88.4
C15	96.4	103.0	107.9	87.7	90.5	108.3	107.6	83.3	94.4	98.7	100.1	79.7	92.2	96.9	100.4
C16	98.0	88.0	77.7	81.5	83.1	84.8	83.0	75.4	83.0	84.1	81.9	73.5	64.2	70.5	80.2
C17	106.6	108.6	103.8	98.1	105.2	110.5	106.7	99.8	101.7	112.1	101.3	93.6	102.0	94.9	104.2
C18	105.1	110.5	104.8	101.7	105.7	107.0	101.2	100.0	101.2	114.3	116.0	109.2	98.9	111.8	121.4
C19
C20	102.3	124.0	119.2	113.7	113.9	122.6	116.9	115.6	110.2	127.3	106.8	112.3	109.8	111.1	131.5
C21	108.6	110.8	117.2	104.5	107.6	116.5	113.0	102.3	132.9	116.2	130.2	132.2	109.5	111.5	123.3
C22	109.7	125.0	128.2	123.7	135.6	141.2	144.0	121.1	136.0	147.6	144.9	120.7	122.7	129.8	147.6
C23	97.8	101.7	100.6	111.4	116.5	117.7	113.3	114.1	112.8	126.3	121.1	101.4	86.4	94.4	121.2
C24	83.4	127.3	120.5	114.8	110.8	112.7	122.3	110.7	104.7	104.1	119.9	113.7	107.6	110.3	120.5
C25	119.9	138.4	135.9	112.1	129.7	133.8	156.7	133.1	113.3	124.4	139.5	107.8	87.7	126.4	126.3
C26	102.5	147.0	160.5	136.0	132.4	152.0	149.7	131.2	149.6	157.8	148.7	144.6	133.6	144.5	153.0
C27	113.1	107.4	118.6	112.9	117.8	126.2	118.0	113.3	122.3	134.5	137.5	107.7	117.7	125.0	135.2
C28	107.0	120.4	121.9	121.8	115.0	125.4	121.9	103.5	119.8	130.0	134.2	118.3	114.8	117.7	132.2
C29	119.8	129.5	140.5	137.3	141.9	149.4	134.9	117.7	142.9	154.7	159.4	100.4	139.9	148.3	155.2
C30	120.5	100.9	149.5	135.2	140.1	143.3	115.7	89.4	106.1	153.9	165.9	108.8	147.1	177.6	201.0
C31	105.5	107.3	113.9	106.1	116.0	113.3	114.3	103.5	112.2	115.9	117.9	107.0	91.6	97.7	107.1
C32	124.3	136.9	132.8	145.5	136.0	160.2	132.0	132.0	137.5	128.2	150.2	129.3	142.5	142.4	143.5
C33	82.4	92.7	120.2	109.2	113.0	137.9	127.8	138.8	138.5	130.9	138.1	176.3	101.6	125.8	126.3
D	104.9	99.8	107.6	82.8	76.0	80.0	84.4	85.0	79.1	79.7	94.9	112.4	114.2	98.9	99.4
D35	104.9	99.8	107.6	82.8	76.0	80.0	84.4	85.0	79.1	79.7	94.9	112.4	114.2	98.9	99.4

¹ ... - Confidential data.