

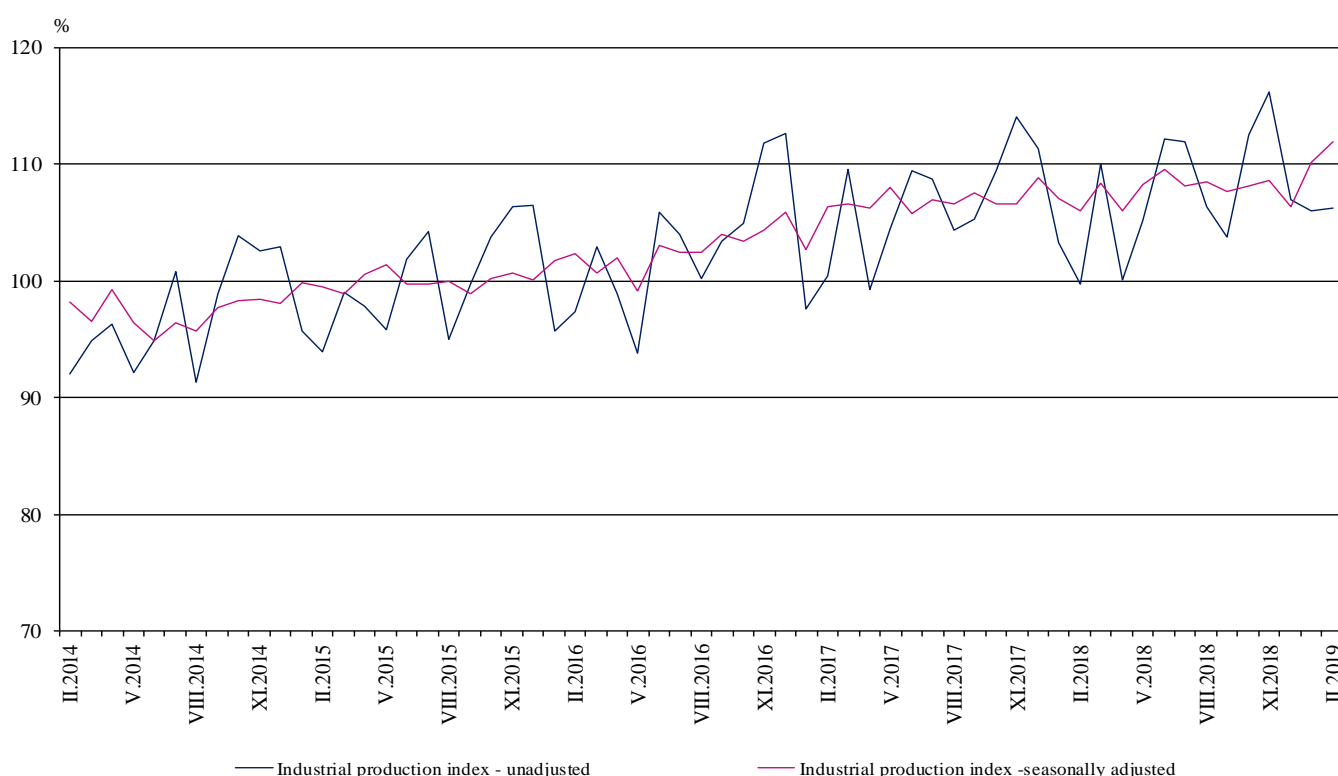


INDUSTRIAL PRODUCTION INDICES IN FEBRUARY 2019¹

According to the preliminary data the Industrial Production Index², seasonally adjusted³, increased by 1.5% in February 2019 as compared to January 2019.

In February 2019 the working day adjusted⁴ Industrial Production Index rose by 6.6% in comparison with the same month of 2018.

Figure 1. Industrial Production Indices (2015 = 100)



¹ February 2019 data are preliminary. The final data on Industrial Production and Turnover Indices for January 2019 can be found on the NSI website: <http://www.nsi.bg/en>.

² Monthly Industrial Production and Industrial turnover indices measure changes in production and turnover values of industrial enterprises. This information can be used to assess the current economic development and for short-term forecasts. Indices do not measure the actual production level, it aims to measure the average change in value of production between two points of time. Indices are compiled on the base of information collected through representative sampling survey on industrial enterprises. The sample covers enterprises with annual turnover more than 97% of total turnover in industry.

Industrial production indices are calculated at constant base year that is to say they are weighted with the structure of the value added at factor costs in the base year.

³ Seasonal adjustment is a statistical method, which eliminates the seasonal component of time series.

⁴ Working day adjustment is an adjustment for variations caused by calendar effects, different number of calendar and working days in the months, national holidays and outliers (for example the presence of more non-working days in May could contribute to the decline in the production in some activities).

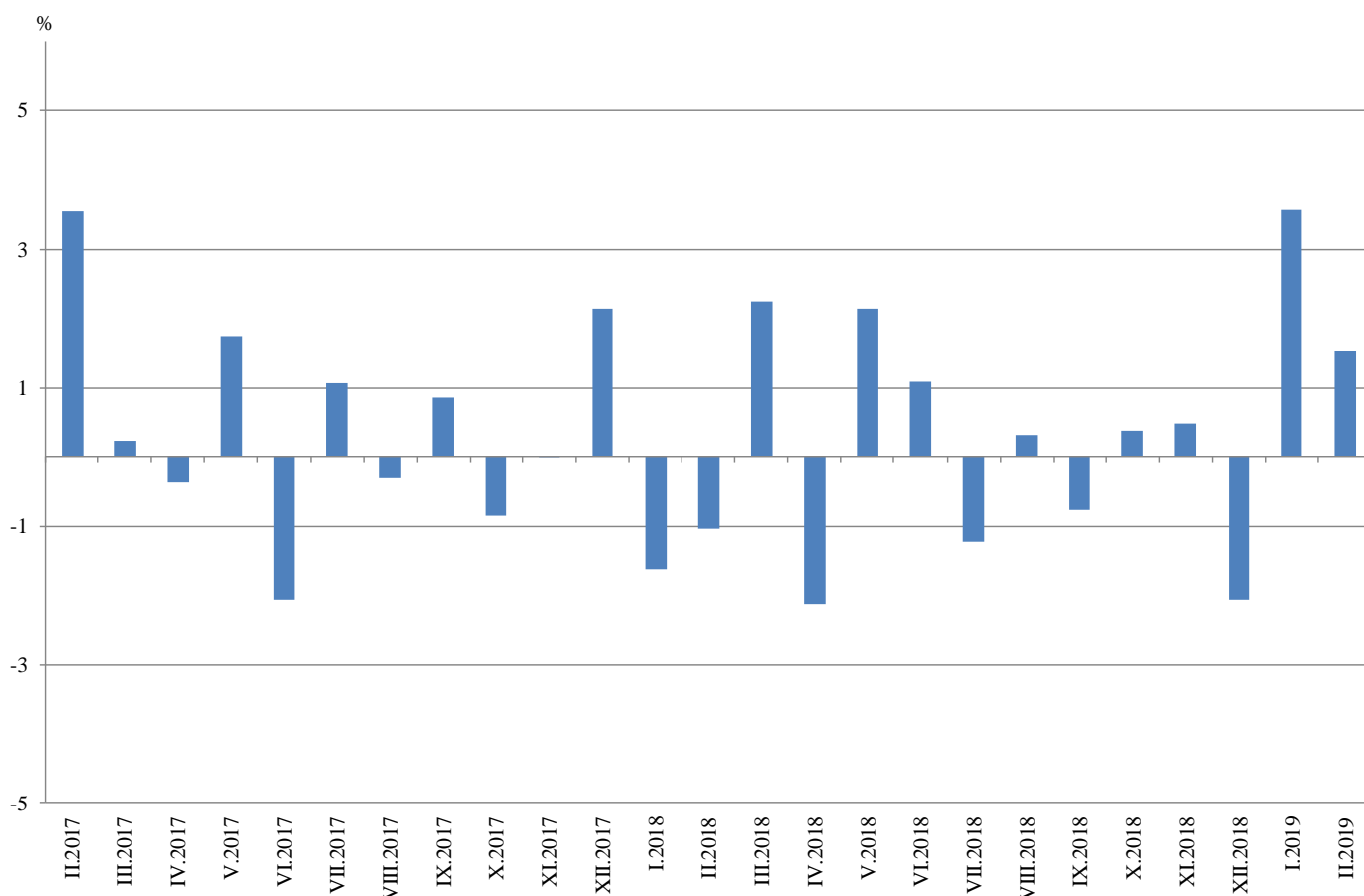


Monthly changes

In February 2019 as compared to January 2019, the seasonally adjusted Industrial Production Index increased in the manufacturing by 1.9%, while the production went down in the mining and quarrying industry by 4.4%, and in the electricity, gas, steam and air conditioning supply by 1.4%.

The most significant production increases in the manufacturing were registered in the manufacture of fabricated metal products, except machinery and equipment by 17.2%, in the printing and reproduction of recorded media by 8.6%, in the manufacture of computer, electronic and optical products by 7.5%. Major decreases were seen in the manufacture of textiles by 12.9%, in the manufacture of chemicals and chemical products by 6.6%, in the manufacture of paper and paper products by 5.3%.

**Figure 2. Changes of Industrial Production Indices compared to the previous month
(Seasonally adjusted)**



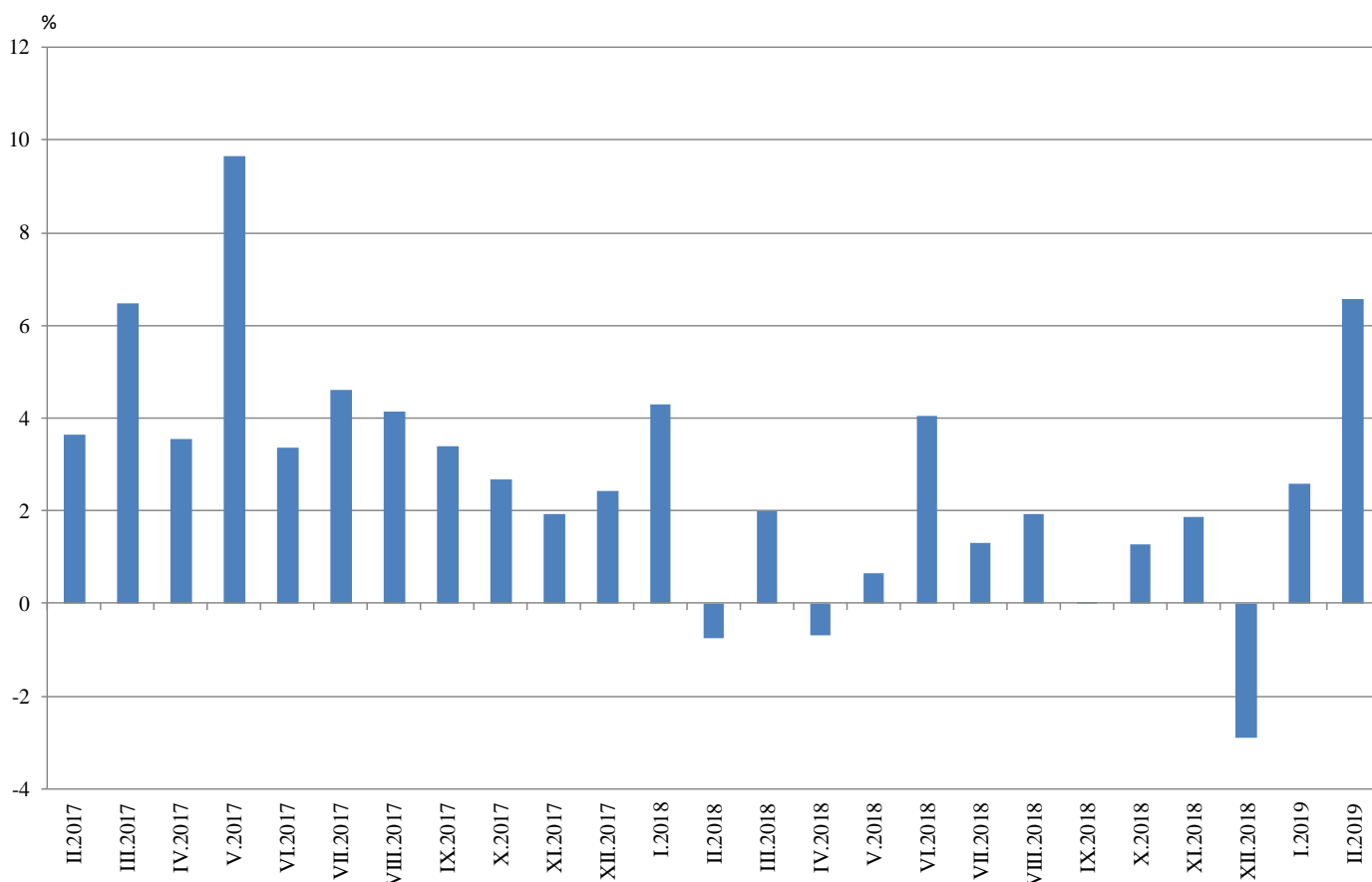


Annual changes

On annual basis in February 2019 Industrial Production Index calculated from working day adjusted data rose in the mining and quarrying industry by 16.3%, and in the manufacturing by 9.1%, while the production fell in the electricity, gas, steam and air conditioning supply by 5.2%.

In the manufacturing, the more considerable increases compared to the same month of the previous year were registered in the manufacture of other transport equipment by 31.7%, in the printing and reproduction of recorded media by 25.3%, in the repair and installation of machinery and equipment by 24.7%, in the manufacture of electrical equipment by 23.5%. Important decreases were seen in the manufacture of tobacco products by 42.2%, in the manufacture of wearing apparel by 8.0%.

Figure 3. Changes of Industrial Production Indices compared to the same month of the previous year (Working day adjusted)



Annex

Table 1
Changes of Industrial Production Indices compared to the previous month^{1,2}
(Per cent)

Economic activities	NACE.BG - 2008	2018				2019	
		IX	X	XI	XII	I	II
Industry	B_TO_E36	-0.8	0.4	0.5	-2.1	3.6	1.5
Mining and quarrying	B	4.8	-0.7	3.4	2.7	12.6	-4.4
Mining of coal and lignite	B05	-10.6	27.4	-4.7	12.8	15.9	-12.3
Extraction of crude petroleum and natural gas	B06
Mining of metal ores	B07	17.9	-10.4	8.9	-3.2	1.6	-1.9
Other mining and quarrying	B08	10.8	-8.9	-0.7	-10.3	39.1	2.6
Mining support service activities	B09
Manufacturing	C	-1.0	0.5	0.5	-2.3	4.8	1.9
Manufacture of food products	C10	-0.3	-2.0	0.1	3.5	11.9	-4.8
Manufacture of beverages	C11	4.6	-2.4	4.1	-7.4	8.4	1.3
Manufacture of tobacco products	C12	8.2	34.5	-13.4	-3.0	-30.3	0.8
Manufacture of textiles	C13	-5.6	2.7	0.3	4.4	6.7	-12.9
Manufacture of wearing apparel	C14	-2.7	-4.3	5.3	-8.1	6.1	-2.3
Manufacture of leather and related products	C15	0.0	7.3	2.3	-10.9	6.6	5.1
Manufacture of wood and of products of wood and cork, except furniture; manufacture of articles of straw and plaiting materials	C16	5.3	-3.5	-0.9	3.7	1.6	-1.1
Manufacture of paper and paper products	C17	0.7	6.3	-7.1	-0.1	6.5	-5.3
Printing and reproduction of recorded media	C18	-3.5	3.4	-3.1	-1.5	8.7	8.6
Manufacture of coke and refined petroleum products	C19
Manufacture of chemicals and chemical products	C20	-7.2	13.5	-15.9	9.9	2.8	-6.6
Manufacture of basic pharmaceutical products and pharmaceutical preparations	C21	12.8	-10.0	5.1	2.6	-7.6	-0.4
Manufacture of rubber and plastic products	C22	4.3	1.6	3.6	1.6	-1.1	2.3
Manufacture of other non-metallic mineral products	C23	-0.8	4.9	1.0	2.5	5.1	-2.0
Manufacture of basic metals	C24	-4.7	-1.8	3.3	5.6	-2.1	1.0
Manufacture of fabricated metal products, except machinery and equipment	C25	-17.3	9.7	4.3	-25.7	28.6	17.2
Manufacture of computer, electronic and optical products	C26	3.4	-2.8	-5.8	-1.6	3.6	7.5
Manufacture of electrical equipment	C27	-5.3	0.7	3.4	-3.7	5.8	3.0
Manufacture of machinery and equipment n.e.c.	C28	3.8	3.4	-0.7	-1.7	4.8	-4.4
Manufacture of motor vehicles, trailers and semi-trailers	C29	2.6	1.3	3.0	-24.8	26.8	4.2
Manufacture of other transport equipment	C30	6.8	28.3	1.4	-24.2	28.4	5.0
Manufacture of furniture	C31	3.3	-1.5	0.6	-2.4	1.6	2.0
Other manufacturing	C32	0.8	-11.4	22.5	2.3	10.3	3.7
Repair and installation of machinery and equipment	C33	-6.7	-4.3	-4.0	7.1	10.7	3.8
Electricity, gas, steam and air conditioning supply	D	-1.8	-3.0	2.6	0.5	0.8	-1.4
Electricity, gas, steam and air conditioning supply	D35	-1.8	-3.0	2.6	0.5	0.8	-1.4

¹ Seasonally adjusted.

² ‘.’ - Confidential data.

Table 2

Changes of Industrial Production Indices compared to the same month of the previous year^{1,2}

(Per cent)

Economic activities	NACE.BG - 2008	2018				2019	
		IX	X	XI	XII	I	II
Industry	B_TO_E36	0.0	1.3	1.9	-2.9	2.6	6.6
Mining and quarrying	B	-10.2	-6.6	-1.8	2.2	16.6	16.3
Mining of coal and lignite	B05	-26.6	-2.8	7.1	11.4	36.4	34.1
Extraction of crude petroleum and natural gas	B06
Mining of metal ores	B07	-1.8	-11.0	-3.1	1.4	2.9	3.7
Other mining and quarrying	B08	29.3	12.5	-0.6	-7.2	7.8	19.2
Mining support service activities	B09
Manufacturing	C	1.7	2.5	2.6	-3.4	2.9	9.1
Manufacture of food products	C10	-0.8	-3.9	-4.1	-5.6	7.6	8.5
Manufacture of beverages	C11	8.1	3.3	17.5	0.0	7.6	15.5
Manufacture of tobacco products	C12	-24.2	25.7	5.3	12.7	-44.1	-42.2
Manufacture of textiles	C13	-6.5	-1.8	-4.8	2.2	19.0	0.1
Manufacture of wearing apparel	C14	-7.9	-12.4	-8.3	-15.3	-3.9	-8.0
Manufacture of leather and related products	C15	-0.3	2.5	7.2	-14.2	1.2	-0.7
Manufacture of wood and of products of wood and cork, except furniture; manufacture of articles of straw and plaiting materials	C16	-5.5	-9.1	-10.5	-9.7	-8.6	-1.4
Manufacture of paper and paper products	C17	-0.6	6.3	-3.0	3.5	0.9	-1.8
Printing and reproduction of recorded media	C18	1.7	4.0	2.8	1.3	4.7	25.3
Manufacture of coke and refined petroleum products	C19
Manufacture of chemicals and chemical products	C20	-9.2	3.9	-15.1	-9.9	2.9	-0.2
Manufacture of basic pharmaceutical products and pharmaceutical preparations	C21	27.0	13.8	8.8	11.7	3.8	7.0
Manufacture of rubber and plastic products	C22	5.1	7.7	13.1	12.2	8.6	13.6
Manufacture of other non-metallic mineral products	C23	2.3	8.3	6.9	9.9	8.4	13.1
Manufacture of basic metals	C24	-12.4	-16.5	-5.7	-1.5	-14.9	4.6
Manufacture of fabricated metal products, except machinery and equipment	C25	-13.2	-10.7	-4.7	-26.3	-6.8	12.9
Manufacture of computer, electronic and optical products	C26	32.0	12.8	2.8	4.1	2.3	11.5
Manufacture of electrical equipment	C27	8.5	9.9	17.6	5.1	14.0	23.5
Manufacture of machinery and equipment n.e.c.	C28	3.4	5.1	4.1	-1.9	6.5	5.2
Manufacture of motor vehicles, trailers and semi-trailers	C29	16.6	12.0	17.3	-13.3	4.5	12.8
Manufacture of other transport equipment	C30	16.7	69.5	43.6	22.0	18.2	31.7
Manufacture of furniture	C31	8.1	7.1	6.1	-6.9	-6.8	-2.6
Other manufacturing	C32	-4.7	-10.4	3.2	0.0	13.8	22.5
Repair and installation of machinery and equipment	C33	25.4	38.7	11.0	15.7	20.4	24.7
Electricity, gas, steam and air conditioning supply	D	-4.7	-5.1	-3.5	-3.3	-1.9	-5.2
Electricity, gas, steam and air conditioning supply	D35	-4.7	-5.1	-3.5	-3.3	-1.9	-5.2

¹ Working day adjusted.

² ‘..’ - Confidential data.

Table 3

Industrial Production Indices¹
(Seasonally adjusted, 2015 = 100)

NACE.BG - 2008	2018											2019	
	II	III	IV	V	VI	VII	VIII	IX	X	XI	XII	I	II
B_TO_E36	106.0	108.4	106.1	108.3	109.5	108.2	108.5	107.7	108.1	108.6	106.4	110.2	111.9
B	96.2	96.2	95.9	96.8	115.6	95.1	93.9	98.4	97.7	101.0	103.7	116.8	111.7
B05	73.7	92.9	73.5	87.7	102.8	82.4	79.6	71.1	90.7	86.4	97.5	113.0	99.1
B06
B07	112.9	108.3	121.4	104.9	140.3	114.6	105.4	124.3	111.4	121.3	117.4	119.3	117.1
B08	105.5	92.3	104.1	102.5	103.2	88.8	95.4	105.7	96.4	95.7	85.9	119.4	122.5
B09
C	110.8	112.1	109.7	112.9	113.7	113.1	114.2	113.0	113.6	114.2	111.6	116.9	119.2
C10	102.7	111.0	102.7	106.3	103.4	103.9	103.4	103.1	101.0	101.1	104.6	117.0	111.4
C11	96.1	99.5	97.8	105.2	104.1	97.2	101.5	106.2	103.7	107.9	100.0	108.3	109.7
C12	50.0	56.3	58.4	61.4	66.4	53.2	48.3	52.3	70.3	60.8	59.0	41.2	41.5
C13	94.3	100.0	95.4	93.7	94.2	100.3	102.2	96.5	99.1	99.4	103.7	110.7	96.5
C14	93.3	95.3	90.1	91.2	91.0	92.0	91.9	89.5	85.6	90.2	82.9	88.0	86.0
C15	99.2	104.2	98.3	104.0	102.2	92.6	88.6	88.6	95.1	97.3	86.7	92.4	97.1
C16	80.0	79.1	82.3	82.7	78.4	76.8	75.2	79.1	76.3	75.7	78.5	79.7	78.8
C17	100.6	101.6	99.9	103.0	105.9	104.6	101.0	101.7	108.1	100.5	100.3	106.8	101.2
C18	98.1	103.6	105.4	107.8	105.0	102.0	106.4	102.7	106.2	102.9	101.3	110.1	119.5
C19
C20	110.5	111.3	110.8	114.2	118.3	113.8	118.7	110.2	125.1	105.1	115.5	118.7	110.9
C21	105.3	111.3	109.2	111.1	111.4	115.6	114.2	128.7	115.8	121.8	124.9	115.4	115.0
C22	125.8	125.6	123.4	132.6	131.0	133.7	126.1	131.5	133.6	138.4	140.6	139.1	142.3
C23	105.1	104.3	105.9	107.2	107.8	105.2	106.9	106.1	111.3	112.4	115.2	121.1	118.7
C24	116.0	114.0	111.2	112.3	113.8	114.6	114.8	109.4	107.4	111.0	117.2	114.7	115.9
C25	128.0	135.3	114.3	134.3	124.7	145.9	133.8	110.6	121.3	126.6	94.0	120.9	141.6
C26	139.9	148.8	137.8	135.3	144.1	145.8	148.8	153.9	149.6	141.0	138.8	143.8	154.6
C27	107.5	113.2	115.5	118.5	118.6	113.7	126.9	120.2	121.1	125.2	120.6	127.6	131.4
C28	115.8	115.2	120.4	115.0	116.9	115.9	116.9	121.3	125.4	124.6	122.4	128.3	122.6
C29	131.0	131.8	137.3	139.8	144.4	138.2	138.9	142.4	144.3	148.6	111.8	141.7	147.6
C30	132.3	129.3	129.0	122.3	132.9	124.5	115.5	123.3	158.2	160.4	121.7	156.2	163.9
C31	112.5	113.5	108.0	115.7	111.1	111.1	105.3	108.8	107.1	107.8	105.3	107.0	109.2
C32	137.4	131.3	148.7	136.7	140.8	134.4	129.6	130.6	115.7	141.7	145.0	160.0	165.9
C33	120.6	122.9	122.3	119.7	134.3	124.3	141.1	131.7	126.0	121.0	129.6	143.5	149.0
D	94.7	98.2	91.9	92.0	91.6	91.0	92.2	90.5	87.8	90.1	90.6	91.3	90.0
D35	94.7	98.2	91.9	92.0	91.6	91.0	92.2	90.5	87.8	90.1	90.6	91.3	90.0

¹ '..' - Confidential data.

Table 4

Industrial Production Indices¹
(Working day adjusted, 2015 = 100)

NACE.BG - 2008	2016	2017	2018												2019	
	II	II	II	III	IV	V	VI	VII	VIII	IX	X	XI	XII	I	II	
B_TO_E36	96.9	100.5	99.7	110.8	101.4	104.6	112.9	112.1	105.0	107.0	111.0	115.1	110.3	105.1	106.3	
B	97.2	105.5	90.3	92.0	89.7	90.6	111.5	93.9	92.1	101.9	110.4	109.4	111.6	114.1	105.1	
B05	89.6	109.1	74.5	82.2	54.3	72.0	85.5	75.1	75.5	75.1	112.5	99.6	116.0	128.9	99.9	
B06	
B07	100.8	110.5	112.9	108.3	121.4	104.9	140.3	114.6	105.4	124.3	111.4	121.3	117.4	119.3	117.1	
B08	75.9	67.7	79.2	82.8	104.5	107.8	114.7	96.6	103.8	116.3	110.7	107.2	86.5	76.1	94.4	
B09	
C	94.5	98.2	99.6	114.0	107.4	113.2	121.6	121.0	111.0	114.6	119.2	121.3	109.7	102.4	108.6	
C10	90.5	88.6	88.8	109.3	98.4	104.7	106.4	105.4	106.4	110.7	110.9	108.0	109.2	99.2	96.4	
C11	72.1	71.7	66.4	93.9	98.8	114.8	127.5	121.9	126.6	117.6	92.8	96.8	101.4	67.1	76.7	
C12	85.2	55.9	32.2	59.9	55.6	67.7	79.4	57.5	46.5	51.0	79.3	65.9	63.4	19.0	18.6	
C13	105.5	104.7	93.0	113.8	105.4	106.4	103.6	104.8	81.0	91.4	100.6	102.1	88.6	95.4	93.1	
C14	102.1	98.6	91.6	93.9	82.1	82.9	98.9	106.6	89.7	87.4	84.9	91.1	80.8	91.3	84.3	
C15	93.4	91.8	97.5	107.9	87.7	90.5	108.3	107.6	83.3	94.4	98.7	100.1	79.7	92.2	96.8	
C16	83.3	85.2	69.8	77.7	81.5	83.1	84.8	83.0	75.4	83.0	84.1	81.9	73.5	64.2	68.8	
C17	98.4	99.7	97.0	103.8	98.1	105.2	110.5	106.7	99.8	101.7	112.1	101.3	93.6	102.0	95.2	
C18	102.3	95.6	89.3	104.8	101.7	105.7	107.0	101.2	100.0	101.2	114.3	116.0	109.2	98.9	111.8	
C19	
C20	97.8	111.7	103.0	119.2	113.7	113.9	122.6	116.9	115.6	110.2	127.3	106.8	112.3	109.8	102.8	
C21	110.1	100.1	102.9	117.2	104.5	107.6	116.5	113.0	102.3	132.9	116.2	130.2	132.2	109.5	110.1	
C22	97.3	108.7	114.1	128.2	123.7	135.6	141.2	144.0	121.1	136.0	147.6	144.9	120.7	122.7	129.6	
C23	84.9	79.5	82.9	100.6	111.4	116.5	117.7	113.3	114.1	112.8	126.3	121.1	101.4	86.4	93.8	
C24	85.5	108.2	105.3	120.5	114.8	110.8	112.7	122.3	110.7	104.7	104.1	119.9	113.7	107.6	110.1	
C25	98.4	117.2	111.8	135.9	112.1	129.7	133.8	156.7	133.1	113.3	124.4	139.5	107.8	87.7	126.2	
C26	89.8	114.5	129.6	160.5	136.0	132.4	152.0	149.7	131.2	149.6	157.8	148.7	144.6	133.6	144.5	
C27	103.7	97.8	101.2	118.6	112.9	117.8	126.2	118.0	113.3	122.3	134.5	137.5	107.7	117.7	124.9	
C28	97.1	107.9	111.2	121.9	121.8	115.0	125.4	121.9	103.5	119.8	130.0	134.2	118.3	114.8	117.0	
C29	110.9	114.7	131.4	140.5	137.3	141.9	149.4	134.9	117.7	142.9	154.7	159.4	100.4	139.9	148.2	
C30	102.0	79.2	126.6	149.5	135.2	140.1	143.3	115.7	89.4	106.1	153.9	165.9	108.8	147.1	166.7	
C31	94.7	90.6	100.4	113.9	106.1	116.0	113.3	114.3	103.5	112.2	115.9	117.9	107.0	91.6	97.8	
C32	98.9	120.2	119.4	132.8	145.5	136.0	160.2	132.0	132.0	137.5	128.2	150.2	129.3	142.5	146.2	
C33	72.7	80.1	100.9	120.2	109.2	113.0	137.9	127.8	138.8	138.5	130.9	138.1	176.3	101.6	125.8	
D	105.9	107.1	104.5	107.6	82.8	76.0	80.0	84.4	85.0	79.1	79.7	94.9	112.4	114.2	99.1	
D35	105.9	107.1	104.5	107.6	82.8	76.0	80.0	84.4	85.0	79.1	79.7	94.9	112.4	114.2	99.1	