

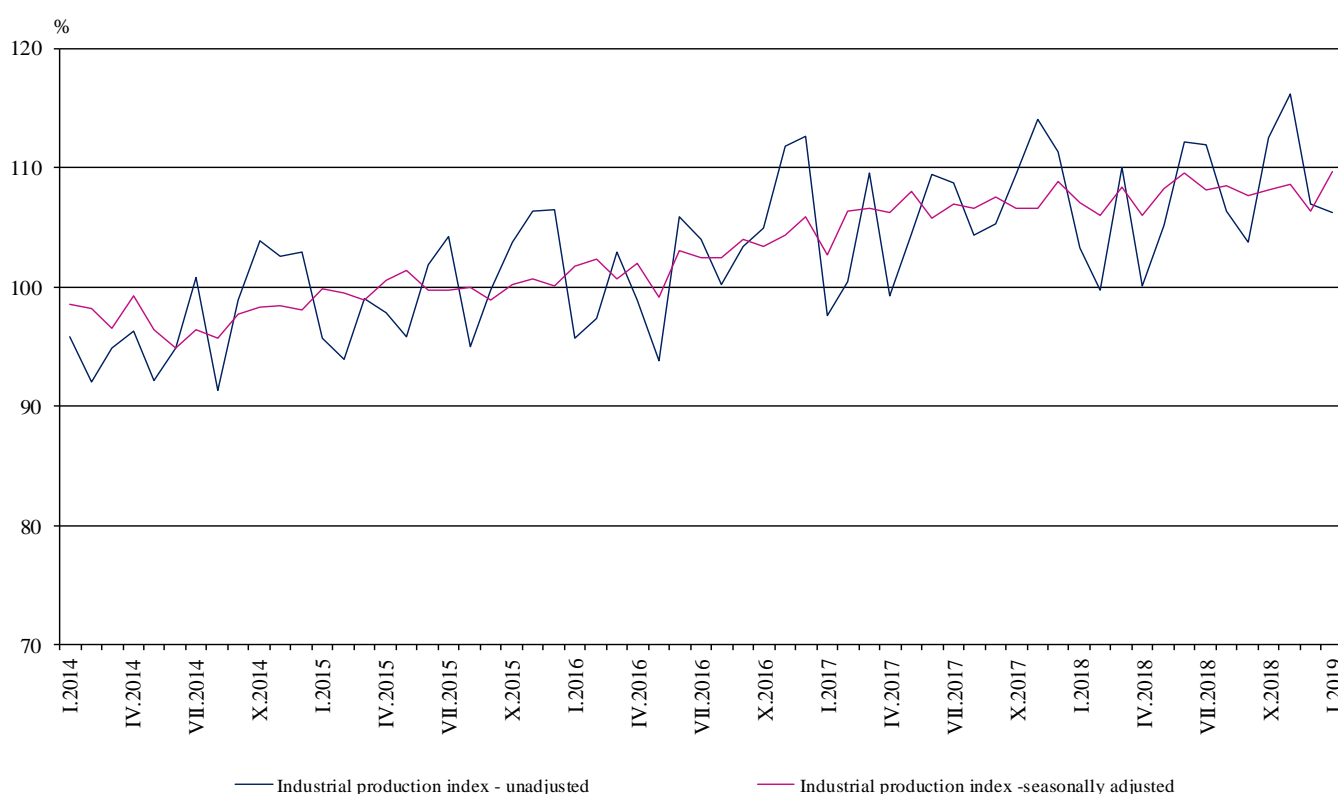


## INDUSTRIAL PRODUCTION INDICES IN JANUARY 2019<sup>1</sup>

According to the preliminary data the Industrial Production Index<sup>2</sup>, seasonally adjusted<sup>3</sup>, increased by 3.2% in January 2019 as compared to December 2018.

In January 2019 the working day adjusted<sup>4</sup> Industrial Production Index rose by 2.8% in comparison with the same month of 2018.

**Figure 1. Industrial Production Indices (2015 = 100)**



<sup>1</sup> January 2019 data are preliminary. The final data on Industrial Production and Turnover Indices for December 2018 can be found on the NSI website: <http://www.nsi.bg/en>.

<sup>2</sup> Monthly Industrial Production and Industrial turnover indices measure changes in production and turnover values of industrial enterprises. This information can be used to assess the current economic development and for short-term forecasts. Indices do not measure the actual production level, it aims to measure the average change in value of production between two points of time. Indices are compiled on the base of information collected through representative sampling survey on industrial enterprises. The sample covers enterprises with annual turnover more than 97% of total turnover in industry.

Industrial production indices are calculated at constant base year that is to say they are weighted with the structure of the value added at factor costs in the base year.

<sup>3</sup> Seasonal adjustment is a statistical method, which eliminates the seasonal component of time series.

<sup>4</sup> Working day adjustment is an adjustment for variations caused by calendar effects, different number of calendar and working days in the months, national holidays and outliers (for example the presence of more non-working days in May could contribute to the decline in the production in some activities).

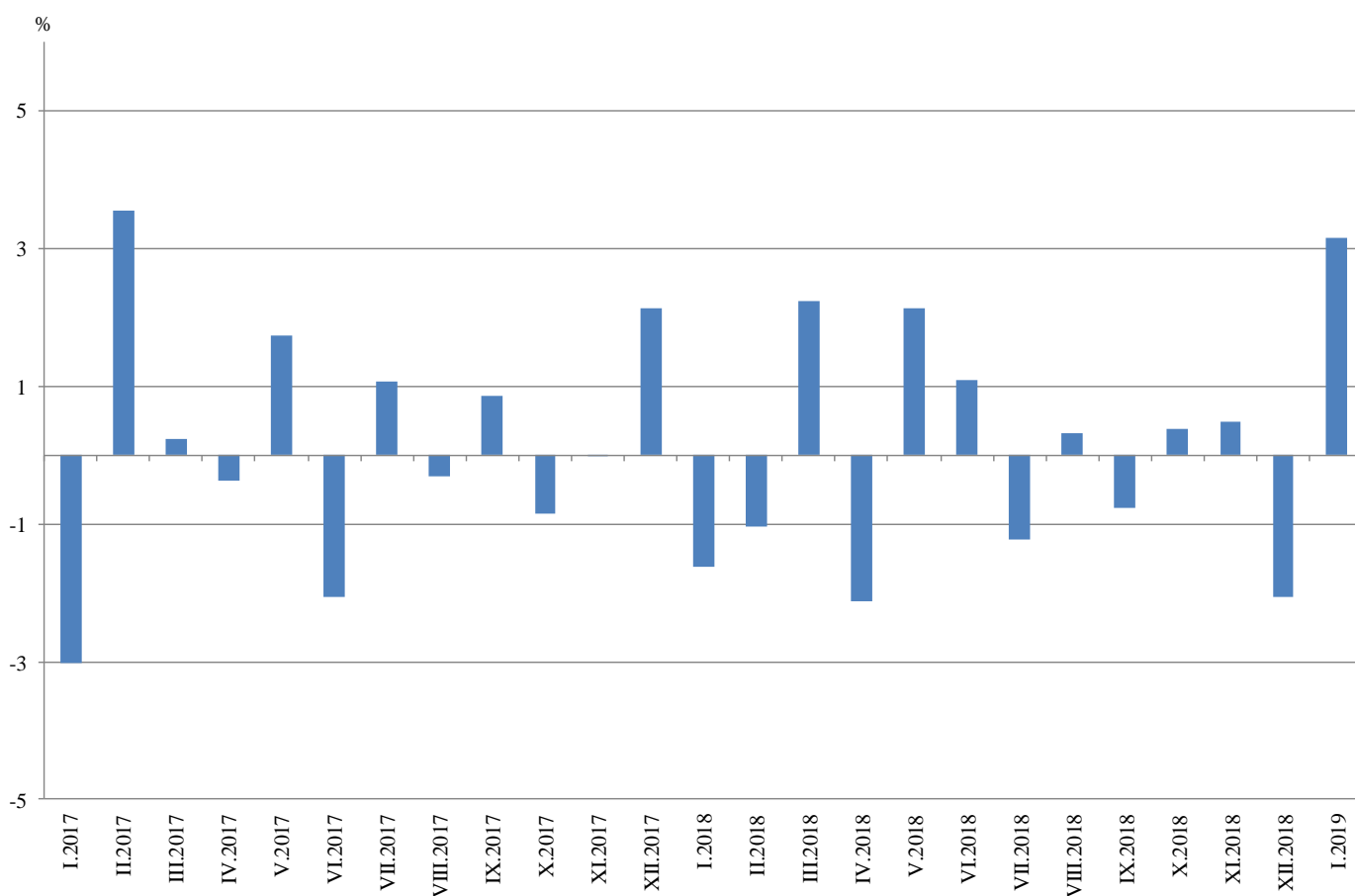


## Monthly changes

In January 2019 as compared to December 2018, the seasonally adjusted Industrial Production Index increased in the mining and quarrying industry by 12.4%, in the manufacturing by 4.1%, and in the electricity, gas, steam and air conditioning supply by 2.1%.

The most significant production increases in the manufacturing were registered in the manufacture of fabricated metal products, except machinery and equipment and in the manufacture of other transport equipment by 28.5%, in the manufacture of motor vehicles, trailers and semi-trailers by 26.6%, in the manufacture of textiles by 15.0%, in the manufacture of food products by 11.8%. There were decreases in the manufacture of tobacco products by 28.2%, in the manufacture of basic pharmaceutical products and pharmaceutical preparations by 7.3%.

**Figure 2. Changes of Industrial Production Indices compared to the previous month  
(Seasonally adjusted)**



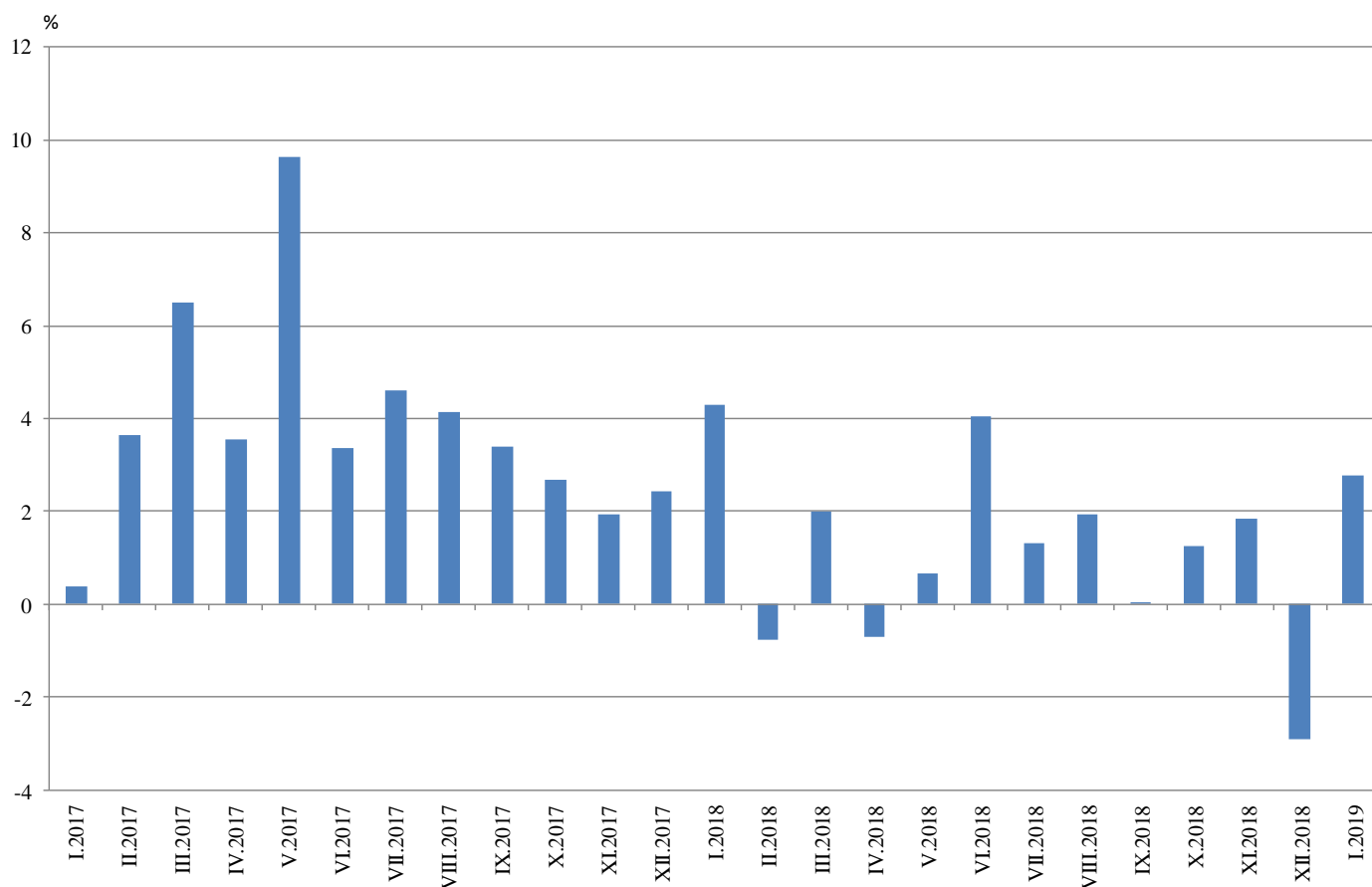


## Annual changes

On annual basis in January 2019 Industrial Production Index calculated from working day adjusted data rose in the mining and quarrying industry by 16.4%, and in the manufacturing by 2.9%, while the production fell in the electricity, gas, steam and air conditioning supply by 1.1%.

In the manufacturing, the more considerable increases compared to the same month of the previous year were registered in the manufacture of textiles by 28.8%, in the repair and installation of machinery and equipment by 20.4%, in the manufacture of other transport equipment by 20.2%, in the manufacture of electrical equipment by 13.4%. Decreases were seen in the manufacture of tobacco products by 44.6%, in the manufacture of basic metals by 15.0%, in the manufacture of wood and of products of wood and cork, except furniture; manufacture of articles of straw and plaiting materials by 8.3%, in the manufacture of furniture by 6.4%.

**Figure 3. Changes of Industrial Production Indices compared to the same month of the previous year (Working day adjusted)**



Annex

Table 1

Changes of Industrial Production Indices compared to the previous month<sup>1,2</sup>

(Per cent)

| Economic activities   | NACE.BG -<br>2008 | 2018        |             |             |            |             | 2019        |
|---|-------------------|-------------|-------------|-------------|------------|-------------|-------------|
|   |                   | VIII        | IX          | X           | XI         | XII         | I           |
| <b>Industry</b>   | <b>B_TO_E36</b>   | <b>0.3</b>  | <b>-0.8</b> | <b>0.4</b>  | <b>0.5</b> | <b>-2.1</b> | <b>3.2</b>  |
| <b>Mining and quarrying</b>   | <b>B</b>          | <b>-1.3</b> | <b>4.8</b>  | <b>-0.7</b> | <b>3.4</b> | <b>2.7</b>  | <b>12.4</b> |
| Mining of coal and lignite  | B05               | -3.4        | -10.6       | 27.4        | -4.7       | 12.8        | 15.9        |
| Extraction of crude petroleum and natural gas   | B06               | ..          | ..          | ..          | ..         | ..          | ..          |
| Mining of metal ores  | B07               | -8.0        | 17.9        | -10.4       | 8.9        | -3.2        | 1.5         |
| Other mining and quarrying  | B08               | 7.4         | 10.8        | -8.9        | -0.7       | -10.3       | 36.9        |
| Mining support service activities   | B09               | ..          | ..          | ..          | ..         | ..          | ..          |
| <b>Manufacturing</b>  | <b>C</b>          | <b>0.9</b>  | <b>-1.0</b> | <b>0.5</b>  | <b>0.5</b> | <b>-2.3</b> | <b>4.1</b>  |
| Manufacture of food products  | C10               | -0.5        | -0.3        | -2.0        | 0.1        | 3.5         | 11.8        |
| Manufacture of beverages  | C11               | 4.4         | 4.6         | -2.4        | 4.1        | -7.4        | 5.9         |
| Manufacture of tobacco products   | C12               | -9.2        | 8.2         | 34.5        | -13.4      | -3.0        | -28.2       |
| Manufacture of textiles   | C13               | 2.0         | -5.6        | 2.7         | 0.3        | 4.4         | 15.0        |
| Manufacture of wearing apparel  | C14               | -0.1        | -2.7        | -4.3        | 5.3        | -8.1        | 6.6         |
| Manufacture of leather and related products   | C15               | -4.2        | 0.0         | 7.3         | 2.3        | -10.9       | 5.7         |
| Manufacture of wood and of products of wood and cork, except furniture; manufacture of articles of straw and plaiting materials | C16               | -2.2        | 5.3         | -3.5        | -0.9       | 3.7         | 1.9         |
| Manufacture of paper and paper products   | C17               | -3.5        | 0.7         | 6.3         | -7.1       | -0.1        | 3.5         |
| Printing and reproduction of recorded media   | C18               | 4.3         | -3.5        | 3.4         | -3.1       | -1.5        | 7.8         |
| Manufacture of coke and refined petroleum products  | C19               | ..          | ..          | ..          | ..         | ..          | ..          |
| Manufacture of chemicals and chemical products  | C20               | 4.3         | -7.2        | 13.5        | -15.9      | 9.9         | 5.2         |
| Manufacture of basic pharmaceutical products and pharmaceutical preparations  | C21               | -1.3        | 12.8        | -10.0       | 5.1        | 2.6         | -7.3        |
| Manufacture of rubber and plastic products  | C22               | -5.6        | 4.3         | 1.6         | 3.6        | 1.6         | -1.4        |
| Manufacture of other non-metallic mineral products  | C23               | 1.6         | -0.8        | 4.9         | 1.0        | 2.5         | 2.5         |
| Manufacture of basic metals   | C24               | 0.1         | -4.7        | -1.8        | 3.3        | 5.6         | -2.6        |
| Manufacture of fabricated metal products, except machinery and equipment  | C25               | -8.3        | -17.3       | 9.7         | 4.3        | -25.7       | 28.5        |
| Manufacture of computer, electronic and optical products  | C26               | 2.1         | 3.4         | -2.8        | -5.8       | -1.6        | 3.4         |
| Manufacture of electrical equipment   | C27               | 11.6        | -5.3        | 0.7         | 3.4        | -3.7        | 4.8         |
| Manufacture of machinery and equipment n.e.c.   | C28               | 0.9         | 3.8         | 3.4         | -0.7       | -1.7        | 5.1         |
| Manufacture of motor vehicles, trailers and semi-trailers   | C29               | 0.5         | 2.6         | 1.3         | 3.0        | -24.8       | 26.6        |
| Manufacture of other transport equipment  | C30               | -7.2        | 6.8         | 28.3        | 1.4        | -24.2       | 28.5        |
| Manufacture of furniture  | C31               | -5.2        | 3.3         | -1.5        | 0.6        | -2.4        | 1.8         |
| Other manufacturing   | C32               | -3.6        | 0.8         | -11.4       | 22.5       | 2.3         | 6.8         |
| Repair and installation of machinery and equipment  | C33               | 13.6        | -6.7        | -4.3        | -4.0       | 7.1         | 10.4        |
| <b>Electricity, gas, steam and air conditioning supply</b>  | <b>D</b>          | <b>1.3</b>  | <b>-1.8</b> | <b>-3.0</b> | <b>2.6</b> | <b>0.5</b>  | <b>2.1</b>  |
| Electricity, gas, steam and air conditioning supply   | D35               | 1.3         | -1.8        | -3.0        | 2.6        | 0.5         | 2.1         |

<sup>1</sup> Seasonally adjusted.

<sup>2</sup> ‘.’ - Confidential data.

**Table 2**

**Changes of Industrial Production Indices compared to the same month of the previous year<sup>1,2</sup>**

(Per cent)

| Economic activities   | NACE.BG - 2008  | 2018         |              |             |             |             | 2019        |
|---|-----------------|--------------|--------------|-------------|-------------|-------------|-------------|
|   |                 | VIII         | IX           | X           | XI          | XII         | I           |
| <b>Industry</b>   | <b>B_TO_E36</b> | <b>1.9</b>   | <b>0.0</b>   | <b>1.3</b>  | <b>1.9</b>  | <b>-2.9</b> | <b>2.8</b>  |
| <b>Mining and quarrying</b>   | <b>B</b>        | <b>-16.8</b> | <b>-10.2</b> | <b>-6.6</b> | <b>-1.8</b> | <b>2.2</b>  | <b>16.4</b> |
| Mining of coal and lignite  | B05             | -18.1        | -26.6        | -2.8        | 7.1         | 11.4        | 36.4        |
| Extraction of crude petroleum and natural gas   | B06             | ..           | ..           | ..          | ..          | ..          | ..          |
| Mining of metal ores  | B07             | -17.1        | -1.8         | -11.0       | -3.1        | 1.4         | 2.8         |
| Other mining and quarrying  | B08             | 18.7         | 29.3         | 12.5        | -0.6        | -7.2        | 6.8         |
| Mining support service activities   | B09             | ..           | ..           | ..          | ..          | ..          | ..          |
| <b>Manufacturing</b>  | <b>C</b>        | <b>4.6</b>   | <b>1.7</b>   | <b>2.5</b>  | <b>2.6</b>  | <b>-3.4</b> | <b>2.9</b>  |
| Manufacture of food products  | C10             | 0.5          | -0.8         | -3.9        | -4.1        | -5.6        | 7.6         |
| Manufacture of beverages  | C11             | 7.6          | 8.1          | 3.3         | 17.5        | 0.0         | 4.9         |
| Manufacture of tobacco products   | C12             | -37.1        | -24.2        | 25.7        | 5.3         | 12.7        | -44.6       |
| Manufacture of textiles   | C13             | 5.7          | -6.5         | -1.8        | -4.8        | 2.2         | 28.8        |
| Manufacture of wearing apparel  | C14             | -0.8         | -7.9         | -12.4       | -8.3        | -15.3       | -3.5        |
| Manufacture of leather and related products   | C15             | 1.3          | -0.3         | 2.5         | 7.2         | -14.2       | 0.6         |
| Manufacture of wood and of products of wood and cork, except furniture; manufacture of articles of straw and plaiting materials | C16             | -8.0         | -5.5         | -9.1        | -10.5       | -9.7        | -8.3        |
| Manufacture of paper and paper products   | C17             | -1.9         | -0.6         | 6.3         | -3.0        | 3.5         | 1.0         |
| Printing and reproduction of recorded media   | C18             | 7.4          | 1.7          | 4.0         | 2.8         | 1.3         | 4.6         |
| Manufacture of coke and refined petroleum products  | C19             | ..           | ..           | ..          | ..          | ..          | ..          |
| Manufacture of chemicals and chemical products  | C20             | -8.5         | -9.2         | 3.9         | -15.1       | -9.9        | 5.4         |
| Manufacture of basic pharmaceutical products and pharmaceutical preparations  | C21             | 5.0          | 27.0         | 13.8        | 8.8         | 11.7        | 3.7         |
| Manufacture of rubber and plastic products  | C22             | 1.6          | 5.1          | 7.7         | 13.1        | 12.2        | 8.3         |
| Manufacture of other non-metallic mineral products  | C23             | 4.8          | 2.3          | 8.3         | 6.9         | 9.9         | 4.2         |
| Manufacture of basic metals   | C24             | 14.8         | -12.4        | -16.5       | -5.7        | -1.5        | -15.0       |
| Manufacture of fabricated metal products, except machinery and equipment  | C25             | -3.3         | -13.2        | -10.7       | -4.7        | -26.3       | -6.1        |
| Manufacture of computer, electronic and optical products  | C26             | 11.9         | 32.0         | 12.8        | 2.8         | 4.1         | 2.4         |
| Manufacture of electrical equipment   | C27             | 26.2         | 8.5          | 9.9         | 17.6        | 5.1         | 13.4        |
| Manufacture of machinery and equipment n.e.c.   | C28             | -0.9         | 3.4          | 5.1         | 4.1         | -1.9        | 6.5         |
| Manufacture of motor vehicles, trailers and semi-trailers   | C29             | 22.1         | 16.6         | 12.0        | 17.3        | -13.3       | 4.5         |
| Manufacture of other transport equipment  | C30             | 15.2         | 16.7         | 69.5        | 43.6        | 22.0        | 20.2        |
| Manufacture of furniture  | C31             | 1.7          | 8.1          | 7.1         | 6.1         | -6.9        | -6.4        |
| Other manufacturing   | C32             | -6.8         | -4.7         | -10.4       | 3.2         | 0.0         | 9.8         |
| Repair and installation of machinery and equipment  | C33             | 50.1         | 25.4         | 38.7        | 11.0        | 15.7        | 20.4        |
| <b>Electricity, gas, steam and air conditioning supply</b>  | <b>D</b>        | <b>-2.7</b>  | <b>-4.7</b>  | <b>-5.1</b> | <b>-3.5</b> | <b>-3.3</b> | <b>-1.1</b> |
| Electricity, gas, steam and air conditioning supply   | D35             | -2.7         | -4.7         | -5.1        | -3.5        | -3.3        | -1.1        |

<sup>1</sup> Working day adjusted.

<sup>2</sup> ‘.’ - Confidential data.



Table 3

**Industrial Production Indices<sup>1</sup>**  
**(Seasonally adjusted, 2015 = 100)**

| NACE.BG -<br>2008 | 2018         |              |              |              |              |              |              |              |              |              |              |              | 2019         |
|-------------------|--------------|--------------|--------------|--------------|--------------|--------------|--------------|--------------|--------------|--------------|--------------|--------------|--------------|
|                   | I            | II           | III          | IV           | V            | VI           | VII          | VIII         | IX           | X            | XI           | XII          | I            |
| <b>B_TO_E36</b>   | <b>107.1</b> | <b>106.0</b> | <b>108.4</b> | <b>106.1</b> | <b>108.3</b> | <b>109.5</b> | <b>108.2</b> | <b>108.5</b> | <b>107.7</b> | <b>108.1</b> | <b>108.6</b> | <b>106.4</b> | <b>109.8</b> |
| <b>B</b>          | <b>100.2</b> | <b>96.2</b>  | <b>96.2</b>  | <b>95.9</b>  | <b>96.8</b>  | <b>115.6</b> | <b>95.1</b>  | <b>93.9</b>  | <b>98.4</b>  | <b>97.7</b>  | <b>101.0</b> | <b>103.7</b> | <b>116.6</b> |
| <b>B05</b>        | 78.9         | 73.7         | 92.9         | 73.5         | 87.7         | 102.8        | 82.4         | 79.6         | 71.1         | 90.7         | 86.4         | 97.5         | 113.1        |
| <b>B06</b>        | ..           | ..           | ..           | ..           | ..           | ..           | ..           | ..           | ..           | ..           | ..           | ..           | ..           |
| <b>B07</b>        | 116.0        | 112.9        | 108.3        | 121.4        | 104.9        | 140.3        | 114.6        | 105.4        | 124.3        | 111.4        | 121.3        | 117.4        | 119.2        |
| <b>B08</b>        | 110.5        | 105.5        | 92.3         | 104.1        | 102.5        | 103.2        | 88.8         | 95.4         | 105.7        | 96.4         | 95.7         | 85.9         | 117.5        |
| <b>B09</b>        | ..           | ..           | ..           | ..           | ..           | ..           | ..           | ..           | ..           | ..           | ..           | ..           | ..           |
| <b>C</b>          | <b>113.5</b> | <b>110.8</b> | <b>112.1</b> | <b>109.7</b> | <b>112.9</b> | <b>113.7</b> | <b>113.1</b> | <b>114.2</b> | <b>113.0</b> | <b>113.6</b> | <b>114.2</b> | <b>111.6</b> | <b>116.2</b> |
| <b>C10</b>        | 108.7        | 102.7        | 111.0        | 102.7        | 106.3        | 103.4        | 103.9        | 103.4        | 103.1        | 101.0        | 101.1        | 104.6        | 117.0        |
| <b>C11</b>        | 101.2        | 96.1         | 99.5         | 97.8         | 105.2        | 104.1        | 97.2         | 101.5        | 106.2        | 103.7        | 107.9        | 100.0        | 105.8        |
| <b>C12</b>        | 56.0         | 50.0         | 56.3         | 58.4         | 61.4         | 66.4         | 53.2         | 48.3         | 52.3         | 70.3         | 60.8         | 59.0         | 42.4         |
| <b>C13</b>        | 93.1         | 94.3         | 100.0        | 95.4         | 93.7         | 94.2         | 100.3        | 102.2        | 96.5         | 99.1         | 99.4         | 103.7        | 119.4        |
| <b>C14</b>        | 91.6         | 93.3         | 95.3         | 90.1         | 91.2         | 91.0         | 92.0         | 91.9         | 89.5         | 85.6         | 90.2         | 82.9         | 88.4         |
| <b>C15</b>        | 91.0         | 99.2         | 104.2        | 98.3         | 104.0        | 102.2        | 92.6         | 88.6         | 88.6         | 95.1         | 97.3         | 86.7         | 91.7         |
| <b>C16</b>        | 87.3         | 80.0         | 79.1         | 82.3         | 82.7         | 78.4         | 76.8         | 75.2         | 79.1         | 76.3         | 75.7         | 78.5         | 80.0         |
| <b>C17</b>        | 103.9        | 100.6        | 101.6        | 99.9         | 103.0        | 105.9        | 104.6        | 101.0        | 101.7        | 108.1        | 100.5        | 100.3        | 103.9        |
| <b>C18</b>        | 104.7        | 98.1         | 103.6        | 105.4        | 107.8        | 105.0        | 102.0        | 106.4        | 102.7        | 106.2        | 102.9        | 101.3        | 109.3        |
| <b>C19</b>        | ..           | ..           | ..           | ..           | ..           | ..           | ..           | ..           | ..           | ..           | ..           | ..           | ..           |
| <b>C20</b>        | 115.3        | 110.5        | 111.3        | 110.8        | 114.2        | 118.3        | 113.8        | 118.7        | 110.2        | 125.1        | 105.1        | 115.5        | 121.5        |
| <b>C21</b>        | 111.2        | 105.3        | 111.3        | 109.2        | 111.1        | 111.4        | 115.6        | 114.2        | 128.7        | 115.8        | 121.8        | 124.9        | 115.8        |
| <b>C22</b>        | 128.1        | 125.8        | 125.6        | 123.4        | 132.6        | 131.0        | 133.7        | 126.1        | 131.5        | 133.6        | 138.4        | 140.6        | 138.6        |
| <b>C23</b>        | 111.1        | 105.1        | 104.3        | 105.9        | 107.2        | 107.8        | 105.2        | 106.9        | 106.1        | 111.3        | 112.4        | 115.2        | 118.1        |
| <b>C24</b>        | 123.7        | 116.0        | 114.0        | 111.2        | 112.3        | 113.8        | 114.6        | 114.8        | 109.4        | 107.4        | 111.0        | 117.2        | 114.2        |
| <b>C25</b>        | 128.8        | 128.0        | 135.3        | 114.3        | 134.3        | 124.7        | 145.9        | 133.8        | 110.6        | 121.3        | 126.6        | 94.0         | 120.8        |
| <b>C26</b>        | 140.0        | 139.9        | 148.8        | 137.8        | 135.3        | 144.1        | 145.8        | 148.8        | 153.9        | 149.6        | 141.0        | 138.8        | 143.6        |
| <b>C27</b>        | 111.7        | 107.5        | 113.2        | 115.5        | 118.5        | 118.6        | 113.7        | 126.9        | 120.2        | 121.1        | 125.2        | 120.6        | 126.4        |
| <b>C28</b>        | 121.0        | 115.8        | 115.2        | 120.4        | 115.0        | 116.9        | 115.9        | 116.9        | 121.3        | 125.4        | 124.6        | 122.4        | 128.6        |
| <b>C29</b>        | 134.9        | 131.0        | 131.8        | 137.3        | 139.8        | 144.4        | 138.2        | 138.9        | 142.4        | 144.3        | 148.6        | 111.8        | 141.6        |
| <b>C30</b>        | 132.6        | 132.3        | 129.3        | 129.0        | 122.3        | 132.9        | 124.5        | 115.5        | 123.3        | 158.2        | 160.4        | 121.7        | 156.4        |
| <b>C31</b>        | 114.5        | 112.5        | 113.5        | 108.0        | 115.7        | 111.1        | 111.1        | 105.3        | 108.8        | 107.1        | 107.8        | 105.3        | 107.2        |
| <b>C32</b>        | 141.2        | 137.4        | 131.3        | 148.7        | 136.7        | 140.8        | 134.4        | 129.6        | 130.6        | 115.7        | 141.7        | 145.0        | 154.9        |
| <b>C33</b>        | 119.0        | 120.6        | 122.9        | 122.3        | 119.7        | 134.3        | 124.3        | 141.1        | 131.7        | 126.0        | 121.0        | 129.6        | 143.1        |
| <b>D</b>          | <b>93.4</b>  | <b>94.7</b>  | <b>98.2</b>  | <b>91.9</b>  | <b>92.0</b>  | <b>91.6</b>  | <b>91.0</b>  | <b>92.2</b>  | <b>90.5</b>  | <b>87.8</b>  | <b>90.1</b>  | <b>90.6</b>  | <b>92.5</b>  |
| <b>D35</b>        | 93.4         | 94.7         | 98.2         | 91.9         | 92.0         | 91.6         | 91.0         | 92.2         | 90.5         | 87.8         | 90.1         | 90.6         | 92.5         |

<sup>1</sup> '...' - Confidential data.

Table 4

**Industrial Production Indices<sup>1</sup>**  
**(Working day adjusted, 2015 = 100)**

| NACE.BG - 2008  | 2016         | 2017         | 2018         |              |              |              |              |              |              |              |              |              |              |              | 2019         |
|-----------------|--------------|--------------|--------------|--------------|--------------|--------------|--------------|--------------|--------------|--------------|--------------|--------------|--------------|--------------|--------------|
|                 | I            | I            | I            | II           | III          | IV           | V            | VI           | VII          | VIII         | IX           | X            | XI           | XII          | I            |
| <b>B_TO_E36</b> | <b>97.9</b>  | <b>98.2</b>  | <b>102.5</b> | <b>99.7</b>  | <b>110.8</b> | <b>101.4</b> | <b>104.6</b> | <b>112.9</b> | <b>112.1</b> | <b>105.0</b> | <b>107.0</b> | <b>111.0</b> | <b>115.1</b> | <b>110.3</b> | <b>105.3</b> |
| <b>B</b>        | <b>102.3</b> | <b>101.4</b> | <b>97.9</b>  | <b>90.3</b>  | <b>92.0</b>  | <b>89.7</b>  | <b>90.6</b>  | <b>111.5</b> | <b>93.9</b>  | <b>92.1</b>  | <b>101.9</b> | <b>110.4</b> | <b>109.4</b> | <b>111.6</b> | <b>114.0</b> |
| <b>B05</b>      | 111.6        | 103.8        | 94.5         | 74.5         | 82.2         | 54.3         | 72.0         | 85.5         | 75.1         | 75.5         | 75.1         | 112.5        | 99.6         | 116.0        | 128.9        |
| <b>B06</b>      | ..           | ..           | ..           | ..           | ..           | ..           | ..           | ..           | ..           | ..           | ..           | ..           | ..           | ..           | ..           |
| <b>B07</b>      | 105.7        | 110.3        | 116.0        | 112.9        | 108.3        | 121.4        | 104.9        | 140.3        | 114.6        | 105.4        | 124.3        | 111.4        | 121.3        | 117.4        | 119.2        |
| <b>B08</b>      | 50.4         | 45.7         | 70.6         | 79.2         | 82.8         | 104.5        | 107.8        | 114.7        | 96.6         | 103.8        | 116.3        | 110.7        | 107.2        | 86.5         | 75.5         |
| <b>B09</b>      | ..           | ..           | ..           | ..           | ..           | ..           | ..           | ..           | ..           | ..           | ..           | ..           | ..           | ..           | ..           |
| <b>C</b>        | <b>90.7</b>  | <b>89.4</b>  | <b>99.5</b>  | <b>99.6</b>  | <b>114.0</b> | <b>107.4</b> | <b>113.2</b> | <b>121.6</b> | <b>121.0</b> | <b>111.0</b> | <b>114.6</b> | <b>119.2</b> | <b>121.3</b> | <b>109.7</b> | <b>102.4</b> |
| <b>C10</b>      | 88.1         | 87.0         | 92.2         | 88.8         | 109.3        | 98.4         | 104.7        | 106.4        | 105.4        | 106.4        | 110.7        | 110.9        | 108.0        | 109.2        | 99.2         |
| <b>C11</b>      | 66.5         | 55.4         | 62.4         | 66.4         | 93.9         | 98.8         | 114.8        | 127.5        | 121.9        | 126.6        | 117.6        | 92.8         | 96.8         | 101.4        | 65.4         |
| <b>C12</b>      | 84.1         | 59.2         | 34.1         | 32.2         | 59.9         | 55.6         | 67.7         | 79.4         | 57.5         | 46.5         | 51.0         | 79.3         | 65.9         | 63.4         | 18.9         |
| <b>C13</b>      | 90.3         | 80.1         | 80.2         | 93.0         | 113.8        | 105.4        | 106.4        | 103.6        | 104.8        | 81.0         | 91.4         | 100.6        | 102.1        | 88.6         | 103.3        |
| <b>C14</b>      | 112.1        | 105.5        | 95.0         | 91.6         | 93.9         | 82.1         | 82.9         | 98.9         | 106.6        | 89.7         | 87.4         | 84.9         | 91.1         | 80.8         | 91.7         |
| <b>C15</b>      | 98.0         | 95.9         | 91.1         | 97.5         | 107.9        | 87.7         | 90.5         | 108.3        | 107.6        | 83.3         | 94.4         | 98.7         | 100.1        | 79.7         | 91.6         |
| <b>C16</b>      | 75.9         | 70.5         | 70.2         | 69.8         | 77.7         | 81.5         | 83.1         | 84.8         | 83.0         | 75.4         | 83.0         | 84.1         | 81.9         | 73.5         | 64.4         |
| <b>C17</b>      | 89.5         | 99.4         | 101.1        | 97.0         | 103.8        | 98.1         | 105.2        | 110.5        | 106.7        | 99.8         | 101.7        | 112.1        | 101.3        | 93.6         | 102.1        |
| <b>C18</b>      | 99.1         | 92.7         | 94.5         | 89.3         | 104.8        | 101.7        | 105.7        | 107.0        | 101.2        | 100.0        | 101.2        | 114.3        | 116.0        | 109.2        | 98.9         |
| <b>C19</b>      | ..           | ..           | ..           | ..           | ..           | ..           | ..           | ..           | ..           | ..           | ..           | ..           | ..           | ..           | ..           |
| <b>C20</b>      | 87.9         | 102.1        | 106.7        | 103.0        | 119.2        | 113.7        | 113.9        | 122.6        | 116.9        | 115.6        | 110.2        | 127.3        | 106.8        | 112.3        | 112.5        |
| <b>C21</b>      | 93.3         | 99.7         | 105.6        | 102.9        | 117.2        | 104.5        | 107.6        | 116.5        | 113.0        | 102.3        | 132.9        | 116.2        | 130.2        | 132.2        | 109.5        |
| <b>C22</b>      | 92.5         | 103.2        | 113.0        | 114.1        | 128.2        | 123.7        | 135.6        | 141.2        | 144.0        | 121.1        | 136.0        | 147.6        | 144.9        | 120.7        | 122.4        |
| <b>C23</b>      | 70.3         | 58.2         | 79.7         | 82.9         | 100.6        | 111.4        | 116.5        | 117.7        | 113.3        | 114.1        | 112.8        | 126.3        | 121.1        | 101.4        | 83.1         |
| <b>C24</b>      | 95.1         | 103.4        | 126.5        | 105.3        | 120.5        | 114.8        | 110.8        | 112.7        | 122.3        | 110.7        | 104.7        | 104.1        | 119.9        | 113.7        | 107.5        |
| <b>C25</b>      | 102.7        | 76.6         | 94.0         | 111.8        | 135.9        | 112.1        | 129.7        | 133.8        | 156.7        | 133.1        | 113.3        | 124.4        | 139.5        | 107.8        | 88.3         |
| <b>C26</b>      | 97.6         | 128.8        | 130.6        | 129.6        | 160.5        | 136.0        | 132.4        | 152.0        | 149.7        | 131.2        | 149.6        | 157.8        | 148.7        | 144.6        | 133.7        |
| <b>C27</b>      | 94.0         | 92.7         | 103.2        | 101.2        | 118.6        | 112.9        | 117.8        | 126.2        | 118.0        | 113.3        | 122.3        | 134.5        | 137.5        | 107.7        | 117.0        |
| <b>C28</b>      | 89.2         | 92.6         | 107.8        | 111.2        | 121.9        | 121.8        | 115.0        | 125.4        | 121.9        | 103.5        | 119.8        | 130.0        | 134.2        | 118.3        | 114.8        |
| <b>C29</b>      | 98.2         | 114.6        | 133.9        | 131.4        | 140.5        | 137.3        | 141.9        | 149.4        | 134.9        | 117.7        | 142.9        | 154.7        | 159.4        | 100.4        | 139.9        |
| <b>C30</b>      | 73.2         | 86.6         | 124.4        | 126.6        | 149.5        | 135.2        | 140.1        | 143.3        | 115.7        | 89.4         | 106.1        | 153.9        | 165.9        | 108.8        | 149.6        |
| <b>C31</b>      | 90.9         | 84.7         | 98.3         | 100.4        | 113.9        | 106.1        | 116.0        | 113.3        | 114.3        | 103.5        | 112.2        | 115.9        | 117.9        | 107.0        | 91.9         |
| <b>C32</b>      | 104.6        | 138.3        | 125.3        | 119.4        | 132.8        | 145.5        | 136.0        | 160.2        | 132.0        | 132.0        | 137.5        | 128.2        | 150.2        | 129.3        | 137.6        |
| <b>C33</b>      | 72.8         | 60.9         | 84.4         | 100.9        | 120.2        | 109.2        | 113.0        | 137.9        | 127.8        | 138.8        | 138.5        | 130.9        | 138.1        | 176.3        | 101.5        |
| <b>D</b>        | <b>120.0</b> | <b>127.6</b> | <b>116.5</b> | <b>104.5</b> | <b>107.6</b> | <b>82.8</b>  | <b>76.0</b>  | <b>80.0</b>  | <b>84.4</b>  | <b>85.0</b>  | <b>79.1</b>  | <b>79.7</b>  | <b>94.9</b>  | <b>112.4</b> | <b>115.2</b> |
| <b>D35</b>      | 120.0        | 127.6        | 116.5        | 104.5        | 107.6        | 82.8         | 76.0         | 80.0         | 84.4         | 85.0         | 79.1         | 79.7         | 94.9         | 112.4        | 115.2        |

<sup>1</sup> ... - Confidential data.