

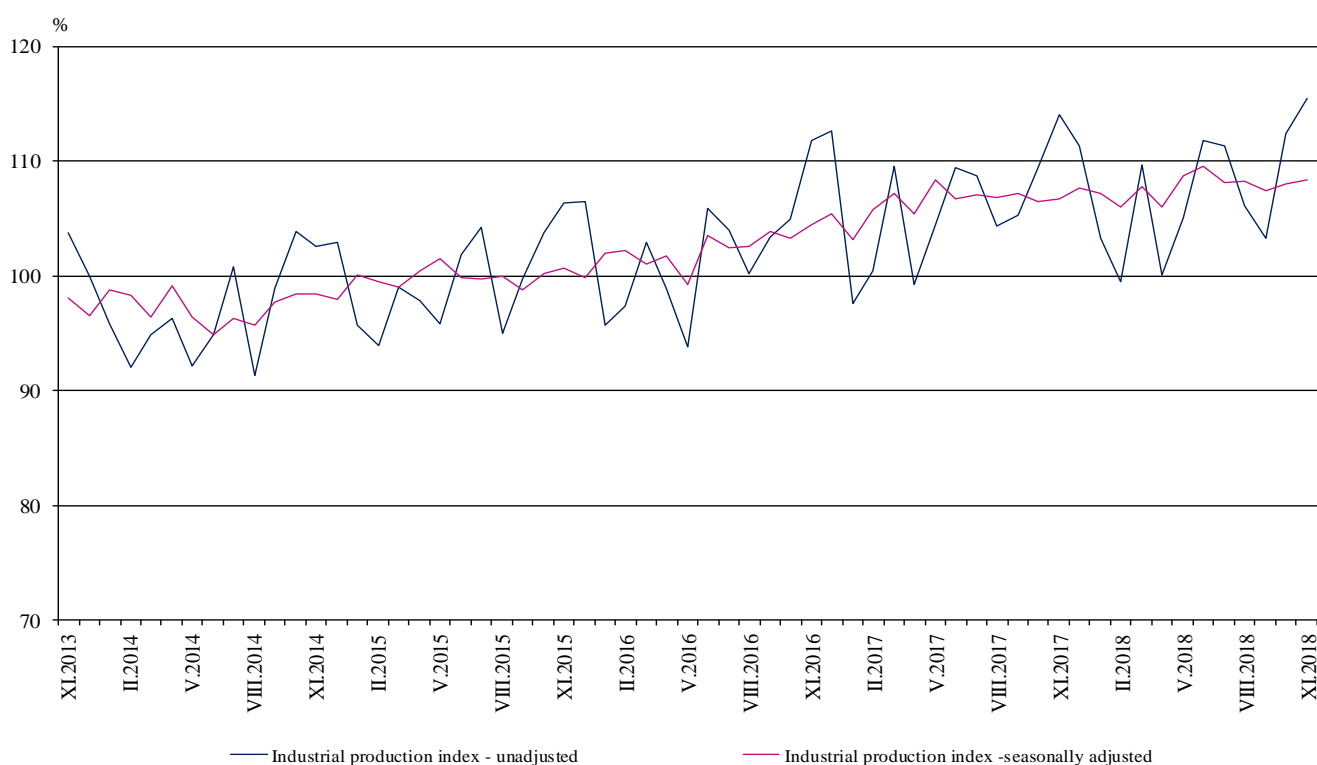


INDUSTRIAL PRODUCTION INDICES IN NOVEMBER 2018¹

According to the preliminary data the Industrial Production Index², seasonally adjusted³, increased by 0.4% in November 2018 as compared to October 2018.

In November 2018 the working day adjusted⁴ Industrial Production Index rose by 1.2% in comparison with the same month of 2017.

Figure 1. Industrial Production Indices (2015 = 100)



¹ November 2018 data are preliminary. The final data on Industrial Production and Turnover Indices for October 2018 can be found on the NSI website: <http://www.nsi.bg/en>.

² Monthly Industrial Production and Industrial turnover indices measure changes in production and turnover values of industrial enterprises. This information can be used to assess the current economic development and for short-term forecasts. Indices do not measure the actual production level, it aims to measure the average change in value of production between two points of time. Indices are compiled on the base of information collected through representative sampling survey on industrial enterprises. The sample covers enterprises with annual turnover more than 97% of total turnover in industry.

Industrial production indices are calculated at constant base year that is to say they are weighted with the structure of the value added at factor costs in the base year.

³ Seasonal adjustment is a statistical method, which eliminates the seasonal component of time series.

⁴ Working day adjustment is an adjustment for variations caused by calendar effects, different number of calendar and working days in the months, national holidays and outliers (for example the presence of more non-working days in May could contribute to the decline in the production in some activities).

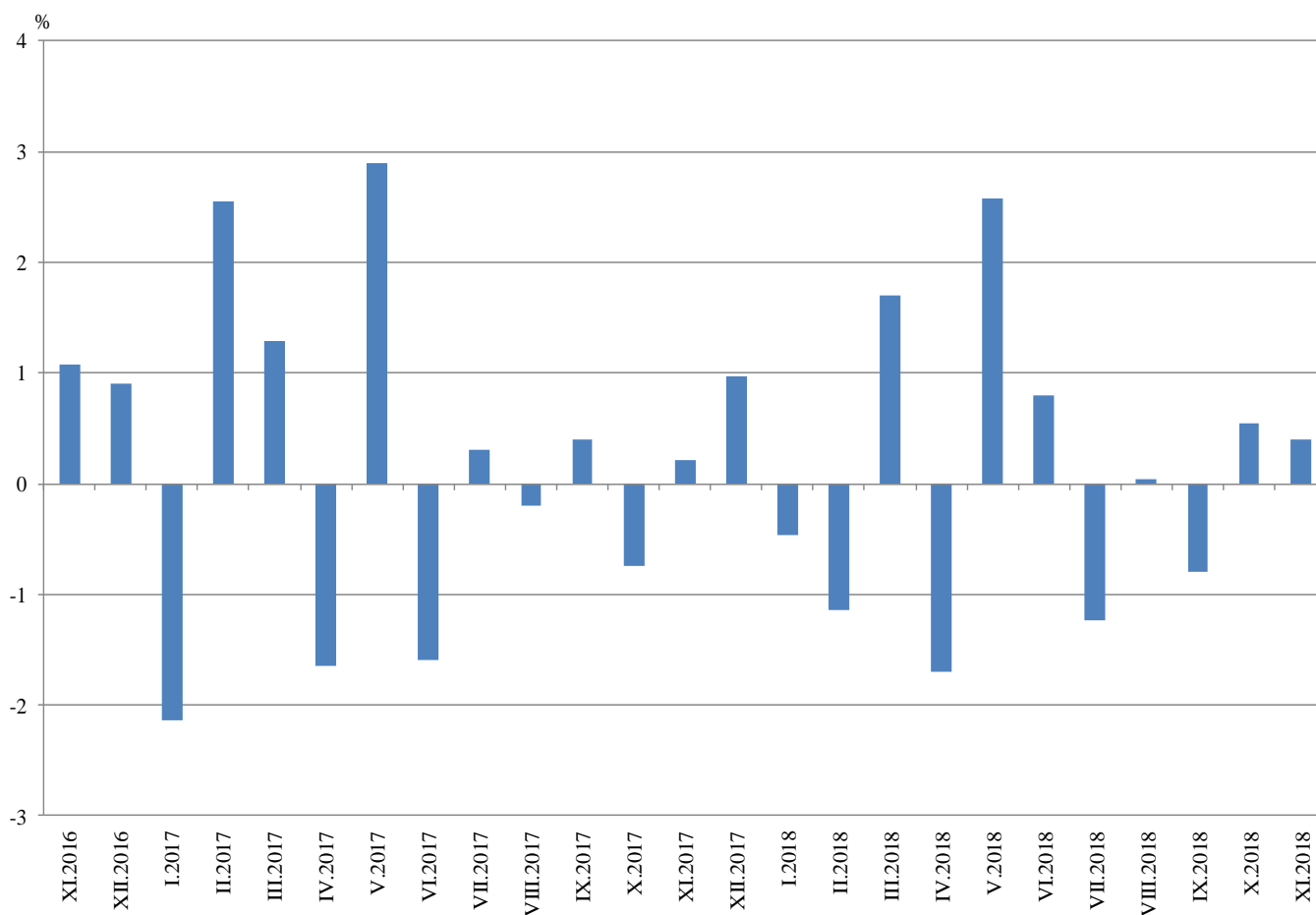


Monthly comparisons

In November 2018 as compared to October 2018, the seasonally adjusted Industrial Production Index increased in the mining and quarrying industry by 3.2%, in the electricity, gas, steam and air conditioning supply by 1.3% and in the manufacturing by 0.3%.

The most significant production increases in the manufacturing were registered in the manufacture of basic pharmaceutical products and pharmaceutical preparations by 5.2%, in the manufacture of wearing apparel by 3.9%, in the manufacture of rubber and plastic products and in the manufacture of electrical equipment - by 3.6%, in the manufacture of fabricated metal products, except machinery and equipment by 3.5%. There were decreases in the manufacture of chemicals and chemical products by 15.8%, in the manufacture of tobacco products by 10.4%, in the manufacture of paper and paper products by 7.5%, in the manufacture of computer, electronic and optical products by 5.8%.

**Figure 2. Changes of Industrial Production Indices compared to the previous month
(Seasonally adjusted)**



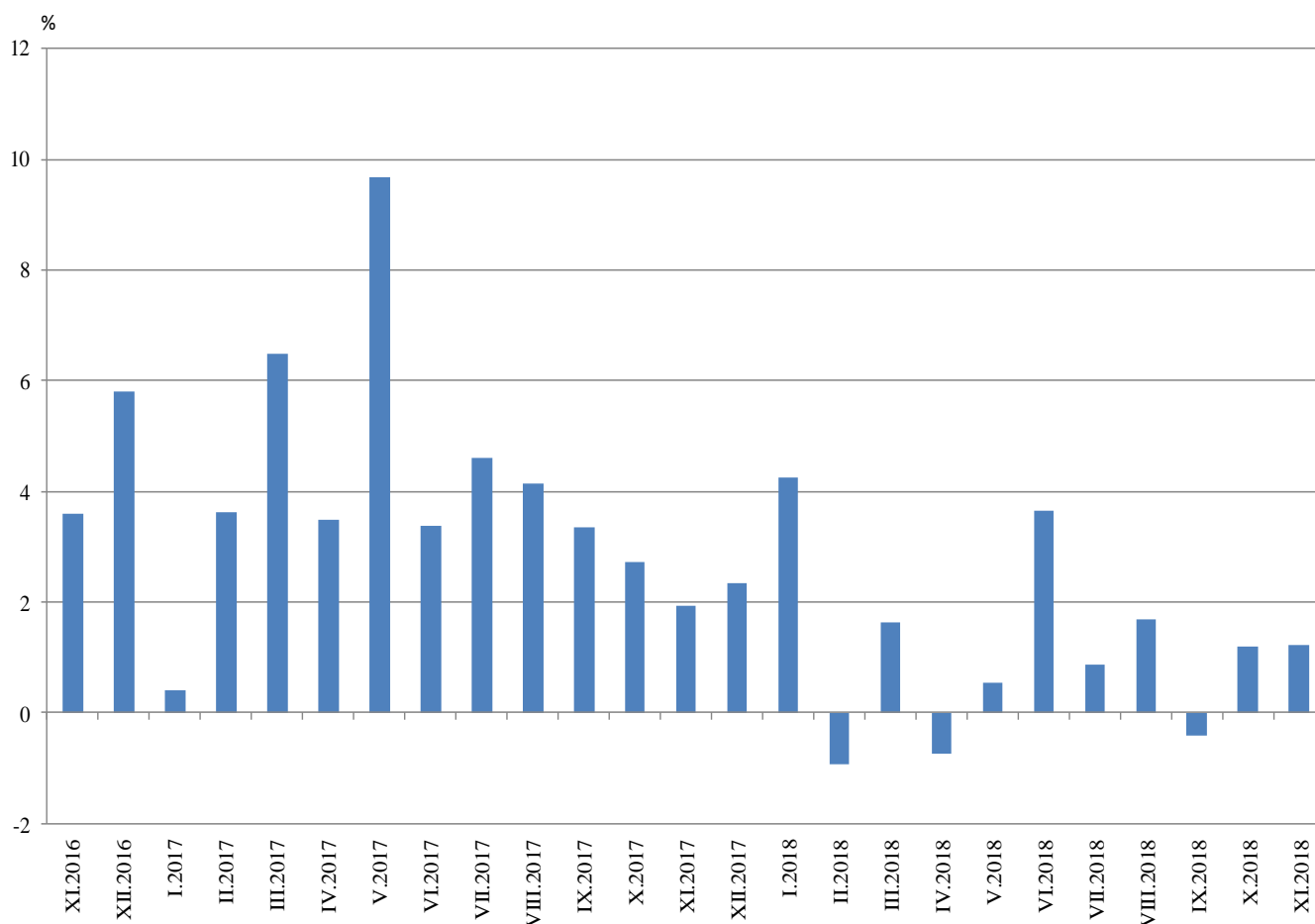


Annual comparisons

On annual basis in November 2018 Industrial Production Index calculated from working day adjusted data rose in the manufacturing by 2.0%, while the production went down in the electricity, gas, steam and air conditioning supply by 3.9% and in the mining and quarrying industry by 2.6%.

In the manufacturing, the more considerable increases compared to the same month of the previous year were registered in the manufacture of other transport equipment by 46.3%, in the manufacture of beverages by 18.1%, in the manufacture of electrical equipment by 17.9%, in the manufacture of motor vehicles, trailers and semi-trailers by 17.7%. Decreases were seen in the manufacture of chemicals and chemical products by 14.6%, in the manufacture of wood and of products of wood and cork, except furniture; manufacture of articles of straw and plaiting materials by 11.2%, in the manufacture of wearing apparel by 9.8%, in the manufacture of textiles by 6.5%.

Figure 3. Changes of Industrial Production Indices compared to the same month of the previous year (Working day adjusted)



Annex

Table 1
Changes of Industrial Production Indices compared to the previous month^{1,2}
(Per cent)

Economic activities	NACE.BG - 2008	2018					
		VI	VII	VIII	IX	X	XI
Industry	B_TO_E36	0.8	-1.2	0.0	-0.8	0.6	0.4
Mining and quarrying	B	18.8	-17.7	-2.0	4.6	-0.5	3.2
Mining of coal and lignite	B05	16.7	-20.6	-3.5	-11.1	28.2	-5.3
Extraction of crude petroleum and natural gas	B06
Mining of metal ores	B07	33.7	-18.4	-7.8	17.8	-10.4	8.8
Other mining and quarrying	B08	0.3	-13.8	8.2	10.0	-9.0	-1.3
Mining support service activities	B09
Manufacturing	C	0.4	-0.4	0.7	-1.2	0.6	0.3
Manufacture of food products	C10	-2.6	0.7	-0.8	-0.6	-1.9	0.0
Manufacture of beverages	C11	-1.3	-6.7	5.4	1.8	1.9	2.9
Manufacture of tobacco products	C12	3.7	-16.2	-10.8	12.0	26.6	-10.4
Manufacture of textiles	C13	0.2	7.3	0.5	-5.1	2.6	-2.3
Manufacture of wearing apparel	C14	0.0	1.2	-0.2	-3.4	-3.6	3.9
Manufacture of leather and related products	C15	-1.0	-3.8	-3.0	1.2	1.5	1.8
Manufacture of wood and of products of wood and cork, except furniture; manufacture of articles of straw and plaiting materials	C16	-4.9	-1.9	-2.3	6.0	-4.5	-1.5
Manufacture of paper and paper products	C17	1.4	-1.3	-2.0	0.1	7.0	-7.5
Printing and reproduction of recorded media	C18	-2.9	-2.3	4.2	-3.9	4.1	-4.6
Manufacture of coke and refined petroleum products	C19
Manufacture of chemicals and chemical products	C20	3.9	-3.2	3.9	-8.1	14.8	-15.8
Manufacture of basic pharmaceutical products and pharmaceutical preparations	C21	0.3	3.4	-0.5	13.1	-10.1	5.2
Manufacture of rubber and plastic products	C22	-1.2	2.0	-5.9	4.2	1.9	3.6
Manufacture of other non-metallic mineral products	C23	0.5	-1.7	1.6	-3.3	7.8	-0.5
Manufacture of basic metals	C24	0.2	1.4	1.5	-5.9	-4.4	1.7
Manufacture of fabricated metal products, except machinery and equipment	C25	-4.8	15.9	-6.9	-18.1	11.7	3.5
Manufacture of computer, electronic and optical products	C26	6.5	1.4	2.4	3.3	-3.1	-5.8
Manufacture of electrical equipment	C27	-0.6	-2.9	11.2	-5.5	1.1	3.6
Manufacture of machinery and equipment n.e.c.	C28	1.3	-0.4	1.1	3.4	2.8	-0.1
Manufacture of motor vehicles, trailers and semi-trailers	C29	2.9	-4.6	0.4	3.1	2.2	2.6
Manufacture of other transport equipment	C30	7.6	-7.0	-7.4	8.5	31.0	1.7
Manufacture of furniture	C31	-4.0	0.3	-5.7	3.1	-1.4	0.9
Other manufacturing	C32	3.3	-5.3	-3.4	-0.1	-11.7	24.1
Repair and installation of machinery and equipment	C33	-4.2	-9.7	16.3	-7.2	-4.2	-3.6
Electricity, gas, steam and air conditioning supply	D	-0.7	-0.5	1.3	-2.4	-2.1	1.3
Electricity, gas, steam and air conditioning supply	D35	-0.7	-0.5	1.3	-2.4	-2.1	1.3

¹ Seasonally adjusted.

² ‘.’ - Confidential data.

Table 2

Changes of Industrial Production Indices compared to the same month of the previous year^{1,2}
(Per cent)

Economic activities	NACE.BG - 2008	2018					
		VI	VII	VIII	IX	X	XI
Industry	B_TO_E36	3.6	0.9	1.7	-0.4	1.2	1.2
Mining and quarrying	B	9.1	-8.8	-17.3	-10.9	-7.2	-2.6
Mining of coal and lignite	B05	4.9	-12.5	-18.1	-26.6	-2.8	7.1
Extraction of crude petroleum and natural gas	B06
Mining of metal ores	B07	19.3	-2.9	-16.9	-1.8	-11.0	-3.2
Other mining and quarrying	B08	18.5	12.9	19.4	29.3	12.5	-1.3
Mining support service activities	B09
Manufacturing	C	3.8	2.0	4.3	1.2	2.2	2.0
Manufacture of food products	C10	-7.0	-3.3	-0.2	-1.6	-4.6	-4.8
Manufacture of beverages	C11	10.3	-4.9	8.9	5.3	5.2	18.1
Manufacture of tobacco products	C12	-5.8	-13.3	-37.1	-24.2	25.7	6.2
Manufacture of textiles	C13	-7.7	2.8	5.5	-6.1	-0.8	-6.5
Manufacture of wearing apparel	C14	-7.4	-3.7	-0.9	-8.2	-12.1	-9.8
Manufacture of leather and related products	C15	4.5	10.2	1.3	-0.3	2.0	7.0
Manufacture of wood and of products of wood and cork, except furniture; manufacture of articles of straw and plaiting materials	C16	-11.9	-9.4	-7.9	-4.6	-9.1	-11.2
Manufacture of paper and paper products	C17	3.4	4.1	-1.8	-0.7	6.4	-3.4
Printing and reproduction of recorded media	C18	3.2	-3.7	7.9	1.7	4.9	1.5
Manufacture of coke and refined petroleum products	C19
Manufacture of chemicals and chemical products	C20	5.3	-8.4	-8.7	-9.9	4.7	-14.6
Manufacture of basic pharmaceutical products and pharmaceutical preparations	C21	-2.4	4.8	5.3	26.7	13.7	9.1
Manufacture of rubber and plastic products	C22	11.5	16.9	1.7	5.2	7.6	13.1
Manufacture of other non-metallic mineral products	C23	10.0	4.7	4.7	2.6	8.0	6.1
Manufacture of basic metals	C24	-4.2	9.8	14.8	-12.4	-16.6	-5.5
Manufacture of fabricated metal products, except machinery and equipment	C25	-5.2	-6.7	-2.6	-13.2	-10.0	-5.3
Manufacture of computer, electronic and optical products	C26	11.0	14.5	12.0	31.8	12.5	2.4
Manufacture of electrical equipment	C27	11.7	7.4	26.2	8.4	9.9	17.9
Manufacture of machinery and equipment n.e.c.	C28	1.4	-1.8	0.1	3.7	4.4	4.2
Manufacture of motor vehicles, trailers and semi-trailers	C29	31.3	16.9	23.0	16.3	12.6	17.7
Manufacture of other transport equipment	C30	33.7	33.1	15.2	16.7	71.7	46.3
Manufacture of furniture	C31	6.3	10.0	1.7	8.0	7.1	6.4
Other manufacturing	C32	7.2	15.7	-6.8	-5.0	-10.5	3.6
Repair and installation of machinery and equipment	C33	24.7	-10.4	34.7	11.8	23.2	-0.3
Electricity, gas, steam and air conditioning supply	D	-4.9	-4.9	-2.6	-4.7	-3.7	-3.9
Electricity, gas, steam and air conditioning supply	D35	-4.9	-4.9	-2.6	-4.7	-3.7	-3.9

¹ Working day adjusted.

² ‘.’ - Confidential data.

Table 3

Industrial Production Indices¹
(Seasonally adjusted, 2015 = 100)

NACE.BG - 2008	2017		2018										
	XI	XII	I	II	III	IV	V	VI	VII	VIII	IX	X	XI
B_TO_E36	106.7	107.7	107.2	106.0	107.8	106.0	108.7	109.6	108.2	108.3	107.4	108.0	108.4
B	102.9	100.4	101.0	96.3	96.3	95.7	97.1	115.4	95.0	93.1	97.4	96.9	100.1
B05	79.4	86.0	81.6	74.8	92.7	73.5	88.2	102.9	81.7	78.9	70.1	89.8	85.1
B06
B07	120.0	110.0	124.4	122.1	110.0	120.4	104.9	140.3	114.6	105.6	124.3	111.4	121.2
B08	95.1	89.8	113.5	105.3	92.9	104.2	102.6	102.9	88.7	96.0	105.6	96.1	94.8
B09
C	112.0	114.2	114.2	110.5	111.4	109.5	113.1	113.5	113.1	113.9	112.6	113.2	113.6
C10	105.1	110.7	110.1	103.6	110.0	101.9	105.5	102.8	103.5	102.7	102.1	100.1	100.1
C11	93.5	97.0	102.6	96.4	98.6	97.1	104.8	103.4	96.5	101.7	103.5	105.5	108.6
C12	64.0	57.7	57.4	63.7	60.4	61.1	65.5	68.0	57.0	50.9	56.9	72.1	64.6
C13	103.0	101.1	97.5	95.9	101.1	95.8	93.6	93.8	100.6	101.2	96.0	98.4	96.2
C14	99.5	95.5	92.2	93.6	95.1	90.3	91.4	91.5	92.5	92.4	89.2	86.0	89.4
C15	91.5	99.0	90.4	99.2	104.0	98.5	101.1	100.1	96.3	93.4	94.5	96.0	97.7
C16	84.4	87.5	87.8	79.5	79.4	82.3	82.5	78.5	77.0	75.2	79.7	76.1	74.9
C17	103.9	96.5	103.2	98.7	101.0	100.1	103.1	104.5	103.1	101.0	101.1	108.2	100.1
C18	99.5	98.6	105.4	98.0	103.5	105.6	108.1	105.0	102.6	106.8	102.7	106.9	101.9
C19
C20	122.3	124.0	113.9	110.7	109.3	110.4	114.0	118.4	114.6	119.1	109.4	125.5	105.7
C21	112.4	115.2	109.5	104.5	110.1	108.7	110.0	110.4	114.2	113.6	128.6	115.5	121.6
C22	123.9	127.6	128.5	125.6	125.2	123.8	132.4	130.9	133.5	125.6	130.9	133.4	138.2
C23	104.9	103.0	116.8	108.1	103.8	106.5	106.8	107.3	105.5	107.1	103.6	111.7	111.1
C24	123.3	127.9	124.9	117.8	114.2	111.1	113.2	113.4	115.0	116.6	109.8	104.9	106.7
C25	135.3	123.0	128.7	126.7	133.7	117.0	131.5	125.2	145.1	135.2	110.7	123.7	128.0
C26	135.6	131.0	138.1	138.7	148.8	138.2	135.4	144.2	146.1	149.7	154.6	149.8	141.1
C27	107.5	113.2	111.1	106.5	112.7	115.3	118.3	117.6	114.2	127.0	119.9	121.3	125.6
C28	120.9	125.3	122.8	115.2	115.5	120.2	114.9	116.5	116.0	117.3	121.3	124.7	124.5
C29	127.2	128.1	132.0	131.7	131.6	136.5	140.6	144.7	138.0	138.5	142.8	145.9	149.7
C30	115.8	91.5	121.8	130.2	126.7	124.7	120.7	129.9	120.8	111.9	121.3	158.9	161.6
C31	101.4	112.2	114.4	112.9	113.6	108.7	116.4	111.7	112.0	105.6	108.9	107.4	108.3
C32	137.8	145.4	145.2	137.5	132.8	149.6	136.8	141.3	133.9	129.3	129.1	114.1	141.6
C33	106.4	111.1	112.1	107.4	113.6	111.7	125.8	120.4	108.7	126.5	117.4	112.4	108.4
D	92.2	92.7	93.9	95.4	98.8	92.6	93.0	92.4	92.0	93.1	90.9	89.0	90.2
D35	92.2	92.7	93.9	95.4	98.8	92.6	93.0	92.4	92.0	93.1	90.9	89.0	90.2

¹ '..' - Confidential data.



Table 4

Industrial Production Indices¹
(Working day adjusted, 2015 = 100)

NACE.BG - 2008	2015	2016	2017		2018										
	XI	XI	XI	XII	I	II	III	IV	V	VI	VII	VIII	IX	X	XI
B_TO_E36	107.1	110.9	113.1	113.6	102.4	99.5	110.5	101.3	104.4	112.5	111.6	104.8	106.5	111.0	114.5
B	109.9	119.6	111.4	109.2	97.9	90.3	92.0	89.5	90.5	111.5	93.9	91.5	101.1	109.6	108.5
B05	104.0	121.0	93.0	104.2	94.5	74.5	82.2	54.4	72.0	85.5	75.1	75.6	75.1	112.5	99.7
B06
B07	109.9	123.7	125.2	115.8	116.0	112.9	108.3	121.1	104.9	140.3	114.6	105.6	124.3	111.4	121.2
B08	105.4	98.4	107.8	93.2	70.4	78.9	82.8	104.0	107.2	114.7	96.6	104.4	116.3	110.7	106.4
B09
C	108.3	112.7	118.2	113.5	99.3	99.3	113.5	107.3	113.0	121.0	120.2	110.7	114.0	118.9	120.5
C10	107.5	109.9	112.6	115.6	92.8	89.2	108.1	97.4	103.8	105.7	104.9	105.8	109.8	110.2	107.2
C11	89.2	95.3	82.6	100.7	63.3	67.1	93.4	97.9	113.7	127.6	121.6	128.5	113.2	94.5	97.6
C12	99.4	82.2	62.6	56.3	36.0	50.2	59.9	55.6	67.7	79.4	57.5	46.5	51.0	79.3	66.4
C13	105.4	105.1	107.4	86.6	82.4	93.3	114.1	105.6	106.6	103.1	105.2	80.9	91.7	101.6	100.4
C14	104.5	92.7	99.3	95.7	95.1	91.4	93.7	82.2	83.1	99.0	106.4	89.7	87.2	85.2	89.6
C15	93.3	101.9	93.4	92.9	90.7	97.2	107.5	87.1	86.7	105.0	107.6	83.3	94.4	98.2	100.0
C16	113.2	94.1	91.5	81.5	70.1	69.1	77.7	81.1	82.6	84.8	83.3	75.5	83.8	84.1	81.3
C17	108.6	111.4	104.6	90.0	100.4	95.0	103.8	98.8	105.3	110.4	106.7	100.1	101.3	112.1	101.0
C18	130.1	121.4	112.9	107.6	94.5	89.4	104.8	101.7	105.8	107.0	101.7	100.6	101.1	115.3	114.6
C19
C20	95.1	111.4	126.0	124.2	105.7	103.2	118.9	113.4	113.5	122.6	117.0	115.6	109.1	128.3	107.6
C21	106.0	105.0	119.4	118.9	102.5	102.9	117.4	105.9	107.5	116.6	113.1	102.2	133.1	116.2	130.2
C22	104.5	119.6	128.1	107.6	113.1	113.9	128.3	124.0	135.2	140.5	144.8	121.2	136.1	147.5	144.9
C23	112.4	103.7	113.3	91.9	80.7	85.0	100.2	110.6	115.6	117.6	113.5	114.0	112.1	126.0	120.2
C24	99.6	114.0	127.1	115.4	126.5	105.2	120.5	114.4	110.6	113.1	122.6	110.7	104.7	104.0	120.0
C25	127.4	145.4	146.4	146.2	93.1	110.8	135.7	115.4	127.2	133.9	152.8	134.1	113.3	125.3	138.6
C26	105.9	125.4	144.6	138.9	129.7	128.2	160.5	136.8	132.7	152.0	149.8	131.3	149.5	157.3	148.1
C27	113.0	111.4	116.9	102.4	103.0	100.7	118.6	112.9	117.8	126.2	118.1	113.4	122.2	134.4	137.9
C28	100.8	117.8	128.9	120.6	108.2	110.0	121.8	121.4	115.1	125.3	122.7	104.5	120.0	129.1	134.3
C29	111.2	121.3	135.3	116.9	134.8	133.2	140.9	137.3	141.9	149.4	134.8	117.6	142.9	155.7	159.2
C30	102.4	78.5	115.5	89.1	115.2	128.5	149.5	133.3	140.5	143.3	115.7	89.4	106.1	156.0	169.0
C31	112.4	123.2	111.1	115.0	98.1	100.5	113.9	106.3	116.0	113.3	115.0	103.5	112.2	115.9	118.2
C32	111.0	140.9	145.5	129.3	125.1	119.0	132.9	145.3	135.9	160.2	132.0	132.0	137.1	128.1	150.7
C33	127.1	111.1	124.4	152.3	79.1	89.4	110.9	99.0	120.9	122.4	111.0	124.5	123.5	116.3	124.0
D	102.8	103.1	98.3	116.3	116.9	104.6	107.6	82.8	76.0	79.9	84.7	85.0	79.1	80.9	94.5
D35	102.8	103.1	98.3	116.3	116.9	104.6	107.6	82.8	76.0	79.9	84.7	85.0	79.1	80.9	94.5

¹ ... - Confidential data.