



## INDUSTRIAL PRODUCTION INDICES IN MARCH 2018<sup>1</sup>

*In compliance with Regulation (EC) № 1165/98 and amendment Regulation (EC) № 1158/2005 since January 2018 the base year for Short-term business statistics has been changed. All short-term indicators presented in the form of indices are calculated and published at 2015 as a base year. The time series has been recalculated according to the new base year and they can be downloaded from INFOSTAT information system: [https://infostat.nsi.bg/infostat/pages/module.jsf?x\\_2=188](https://infostat.nsi.bg/infostat/pages/module.jsf?x_2=188)*

According to the preliminary data the Industrial Production Index<sup>2</sup>, seasonally adjusted<sup>3</sup>, increased by 2.3% in March 2018 as compared to February 2018.

In March 2018 working day adjusted<sup>4</sup> Industrial Production Index rose by 1.7% in comparison with the same month of 2017.

---

<sup>1</sup> March 2018 data are preliminary. The final data on Industrial Production and Turnover Indices for February 2018 can be found on the NSI website: <http://www.nsi.bg/en>.

<sup>2</sup> Monthly Industrial Production and Industrial turnover indices measure changes in production and turnover values of industrial enterprises. This information can be used to assess the current economic development and for short-term forecasts. Indices do not measure the actual production level, it aims to measure the average change in value of production between two points of time. Indices are compiled on the base of information collected through representative sampling survey on industrial enterprises. The sample covers enterprises with annual turnover more than 97% of total turnover in industry.

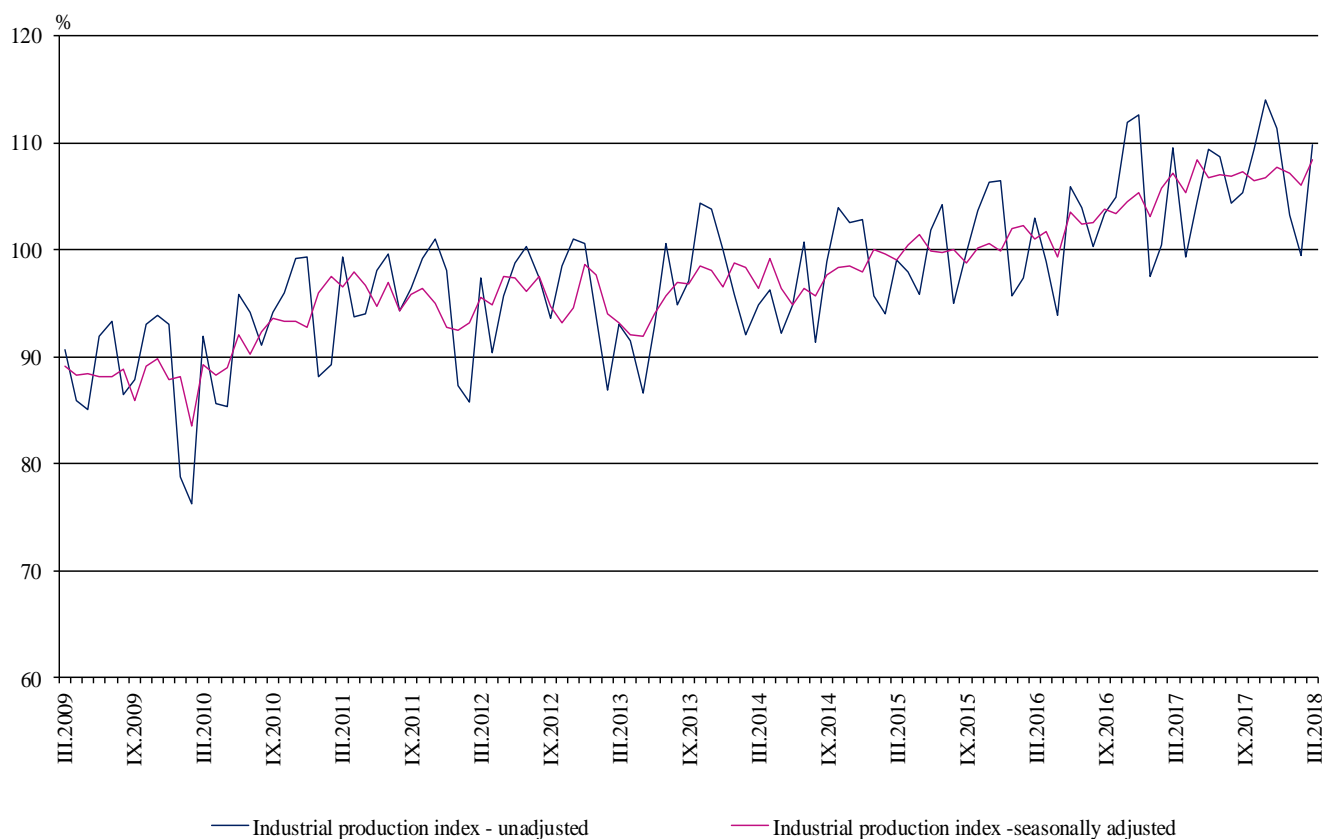
Industrial production indices are calculated at constant base year that is to say they are weighted with the structure of the value added at factor costs in the base year.

<sup>3</sup> Seasonal adjustment is a statistical method, which eliminates the seasonal component of time series.

<sup>4</sup> Working day adjustment is an adjustment for variations caused by calendar effects, different number of calendar and working days in the months, national holidays and outliers (for example the presence of more non-working days in May could contribute to the decline in the production in some activities).



**Figure 1. Industrial Production Indices (2015 = 100)**



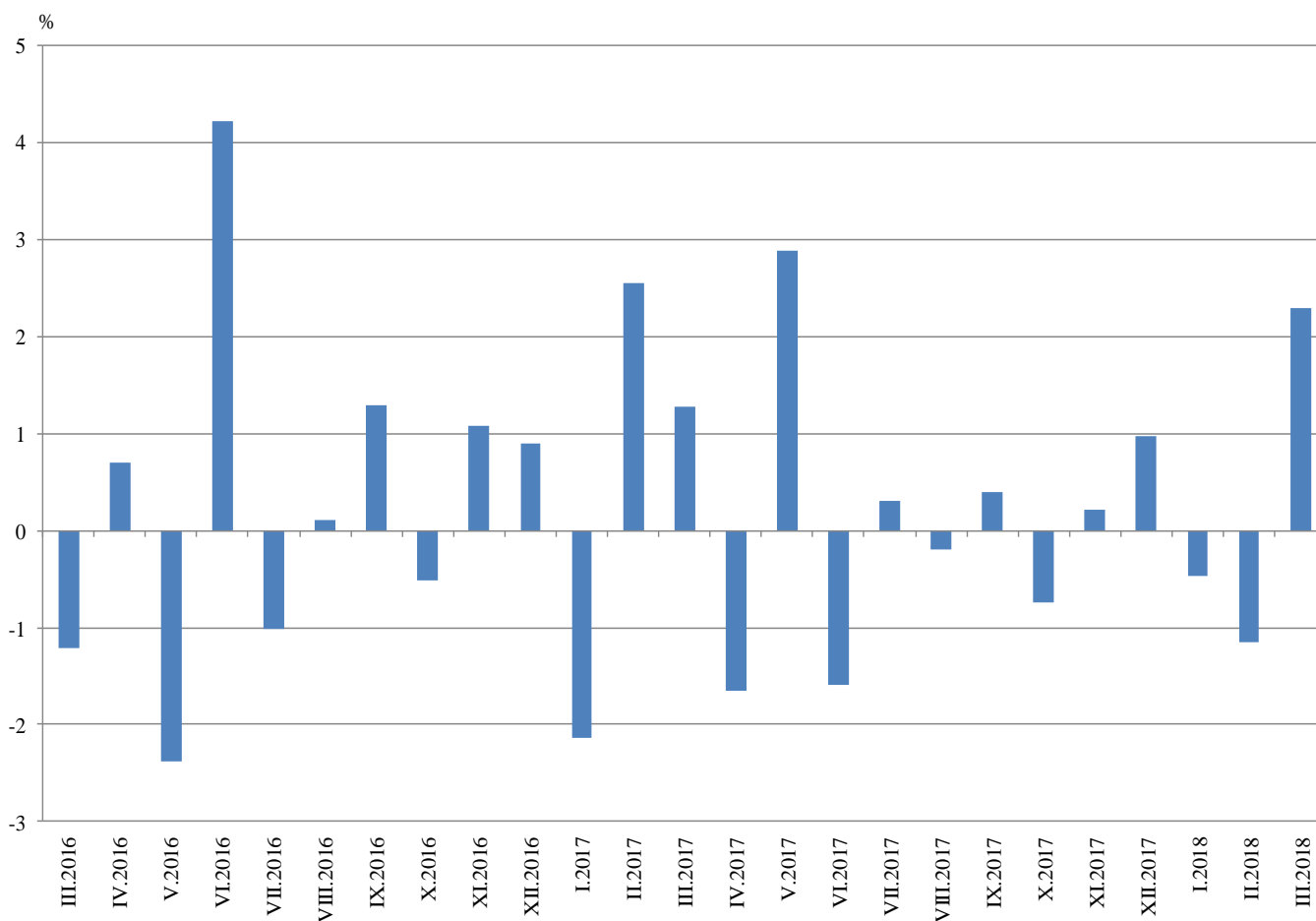
### Monthly comparisons

In March 2018 as compared to February 2018, the seasonally adjusted Industrial Production Index increased in the electricity, gas, steam and air conditioning supply by 3.8%, in the manufacturing by 1.4%, and in the mining and quarrying industry by 0.2%.

The most significant production increases in the manufacturing were registered in the manufacture of food products by 7.1%, in the manufacture of computer, electronic and optical products by 6.9%, in the manufacture of basic pharmaceutical products and pharmaceutical preparations by 6.0%, in the printing and reproduction of recorded media by 5.9%. There were decreases in the manufacture of wood and of products of wood and cork, except furniture; manufacture of articles of straw and plaiting materials by 1.7%, in the manufacture of other transport equipment by 1.6%, in the manufacture of rubber and plastic products by 0.9%.



**Figure 2. Changes of Industrial Production Indices compared to the previous month  
(Seasonally adjusted)**

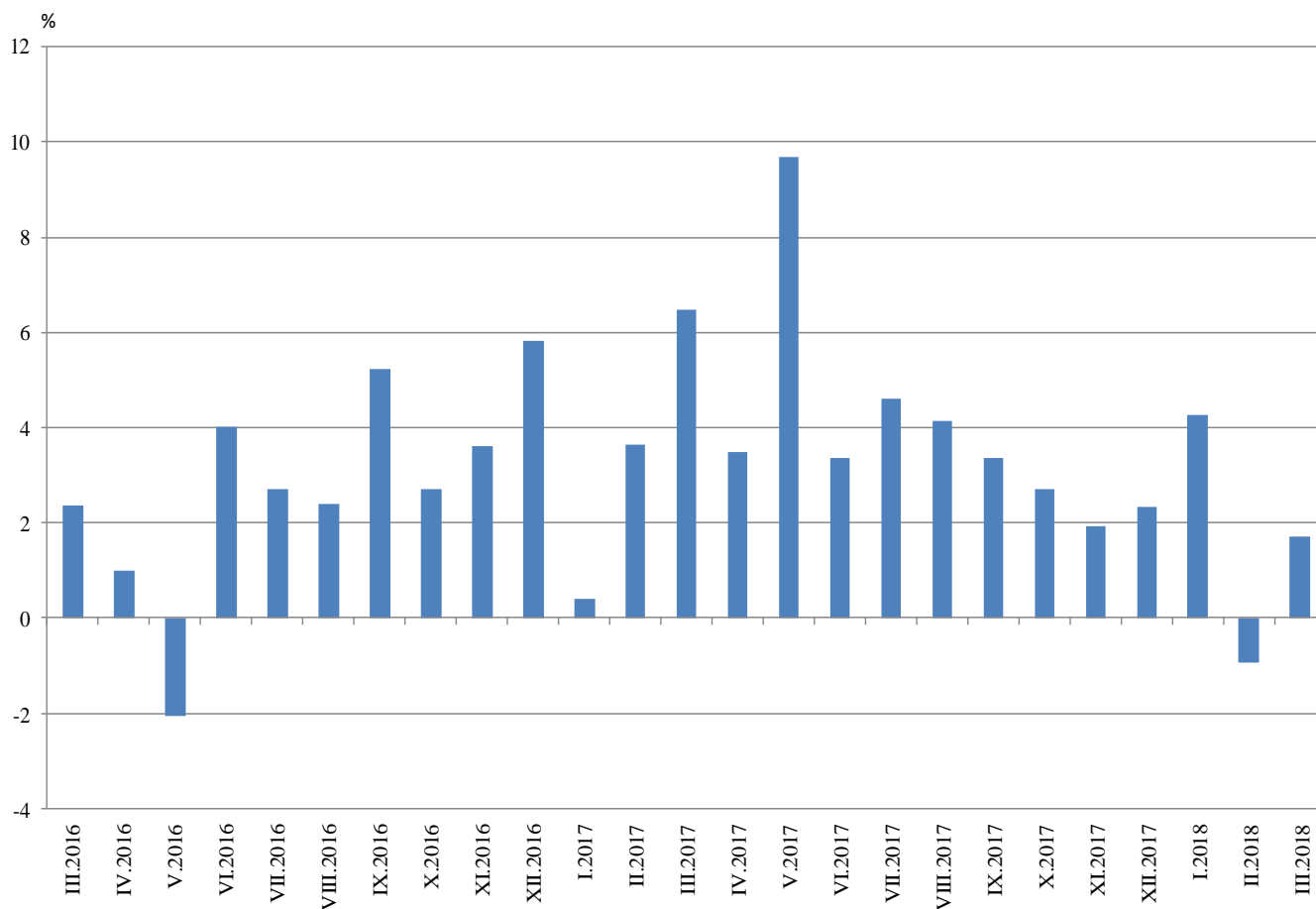


### Annual comparisons

On annual basis in March 2018 Industrial Production Index calculated from working day adjusted data rose in the electricity, gas, steam and air conditioning supply by 7.8% and in the manufacturing by 0.7%, while the production fell in the mining and quarrying industry by 8.7%.

In the manufacturing, the more considerable increases compared to the same month of the previous year were registered in the manufacture of other transport equipment by 52.4%, in the repair and installation of machinery and equipment by 15.1%, in the manufacture of electrical equipment by 10.7%, in the manufacture of motor vehicles, trailers and semi-trailers by 9.6%. Decreases were seen in the manufacture of tobacco products by 22.0%, in the manufacture of wood and of products of wood and cork, except furniture; manufacture of articles of straw and plaiting materials by 13.2%, in the manufacture of wearing apparel by 8.4%, in the manufacture of basic metals by 5.6%.

**Figure 3. Changes of Industrial Production Indices compared to the same month of the previous year  
(Working day adjusted)**



Annex

**Table 1**  
**Changes of Industrial Production Indices compared to the previous month<sup>1,2</sup>**  
(Per cent)

Economic activities	NACE.BG - 2008	2017			2018		
		X	XI	XII	I	II	III
<b>Industry</b>	<b>B_TO_E36</b>	<b>-0.7</b>	<b>0.2</b>	<b>1.0</b>	<b>-0.5</b>	<b>-1.1</b>	<b>2.3</b>
<b>Mining and quarrying</b>	<b>B</b>	<b>-4.7</b>	<b>-1.4</b>	<b>-2.5</b>	<b>0.6</b>	<b>-4.6</b>	<b>0.2</b>
Mining of coal and lignite	B05	-1.7	-15.1	8.3	-5.1	-8.3	25.6
Extraction of crude petroleum and natural gas	B06	..	..	..	..	..	..
Mining of metal ores	B07	-7.3	2.1	-8.4	13.1	-1.8	-10.0
Other mining and quarrying	B08	2.7	12.2	-5.6	26.4	-7.3	-10.3
Mining support service activities	B09	..	..	..	..	..	..
<b>Manufacturing</b>	<b>C</b>	<b>0.0</b>	<b>0.8</b>	<b>1.9</b>	<b>0.0</b>	<b>-3.2</b>	<b>1.4</b>
Manufacture of food products	C10	1.0	0.3	5.4	-0.6	-5.9	7.1
Manufacture of beverages	C11	1.7	-7.1	3.7	5.8	-6.0	2.4
Manufacture of tobacco products	C12	-4.8	-2.4	-9.8	-0.4	11.0	-0.6
Manufacture of textiles	C13	-1.9	3.4	-1.9	-3.6	-1.6	4.7
Manufacture of wearing apparel	C14	-1.3	3.5	-4.0	-3.4	1.4	2.4
Manufacture of leather and related products	C15	5.8	-0.7	8.2	-8.6	9.7	5.5
Manufacture of wood and of products of wood and cork, except furniture; manufacture of articles of straw and plaiting materials	C16	-0.3	0.7	3.8	0.3	-9.5	-1.7
Manufacture of paper and paper products	C17	3.0	-0.4	-7.1	7.0	-4.3	2.3
Printing and reproduction of recorded media	C18	2.3	-3.0	-0.9	6.9	-7.0	5.9
Manufacture of coke and refined petroleum products	C19	..	..	..	..	..	..
Manufacture of chemicals and chemical products	C20	0.1	-1.1	1.4	-8.2	-2.8	-0.1
Manufacture of basic pharmaceutical products and pharmaceutical preparations	C21	-8.8	14.0	2.5	-5.0	-4.6	6.0
Manufacture of rubber and plastic products	C22	-0.5	0.0	2.9	0.7	-2.3	-0.9
Manufacture of other non-metallic mineral products	C23	3.1	0.8	-1.8	13.4	-7.5	-0.3
Manufacture of basic metals	C24	2.5	3.2	3.7	-2.4	-5.6	-0.4
Manufacture of fabricated metal products, except machinery and equipment	C25	8.7	-1.4	-9.1	4.7	-1.6	5.8
Manufacture of computer, electronic and optical products	C26	12.7	1.6	-3.4	5.4	0.4	6.9
Manufacture of electrical equipment	C27	-0.8	-2.2	5.3	-1.9	-4.1	5.6
Manufacture of machinery and equipment n.e.c.	C28	2.9	-0.1	3.7	-2.0	-6.2	0.5
Manufacture of motor vehicles, trailers and semi-trailers	C29	4.4	-0.9	0.7	3.0	-0.2	-0.2
Manufacture of other transport equipment	C30	-1.3	18.9	-21.0	33.1	6.9	-1.6
Manufacture of furniture	C31	-1.0	1.9	10.7	2.0	-1.3	1.0
Other manufacturing	C32	-7.7	10.0	5.5	-0.2	-5.3	-4.0
Repair and installation of machinery and equipment	C33	-14.1	17.9	4.5	0.9	-4.2	2.2
<b>Electricity, gas, steam and air conditioning supply</b>	<b>D</b>	<b>-4.3</b>	<b>1.9</b>	<b>0.6</b>	<b>1.3</b>	<b>1.6</b>	<b>3.8</b>
Electricity, gas, steam and air conditioning supply	D35	-4.3	1.9	0.6	1.3	1.6	3.8

<sup>1</sup> Seasonally adjusted.

<sup>2</sup> ‘.’ - Confidential data.

**Table 2**

**Changes of Industrial Production Indices compared to the same month of the previous year<sup>1,2</sup>**  
(Per cent)

Economic activities	NACE.BG - 2008	2017			2018		
		X	XI	XII	I	II	III
<b>Industry</b>	<b>B_TO_E36</b>	<b>2.7</b>	<b>1.9</b>	<b>2.3</b>	<b>4.3</b>	<b>-0.9</b>	<b>1.7</b>
<b>Mining and quarrying</b>	<b>B</b>	<b>5.3</b>	<b>-6.8</b>	<b>-7.0</b>	<b>-3.5</b>	<b>-14.4</b>	<b>-8.7</b>
Mining of coal and lignite	B05	0.3	-23.1	-8.2	-9.0	-31.7	-5.8
Extraction of crude petroleum and natural gas	B06	..	..	..	..	..	..
Mining of metal ores	B07	13.8	1.3	-3.9	5.1	2.1	-6.2
Other mining and quarrying	B08	2.0	9.6	8.9	54.0	16.6	15.5
Mining support service activities	B09	..	..	..	..	..	..
<b>Manufacturing</b>	<b>C</b>	<b>5.2</b>	<b>4.9</b>	<b>5.7</b>	<b>11.1</b>	<b>1.2</b>	<b>0.7</b>
Manufacture of food products	C10	1.8	2.5	11.0	6.7	0.8	7.8
Manufacture of beverages	C11	-3.7	-13.3	-7.6	14.8	-6.4	-1.8
Manufacture of tobacco products	C12	-15.0	-23.9	-40.1	-39.2	-10.2	-22.0
Manufacture of textiles	C13	-2.0	2.2	6.7	3.0	-10.9	0.4
Manufacture of wearing apparel	C14	-8.1	7.1	0.4	-9.9	-7.3	-8.4
Manufacture of leather and related products	C15	0.1	-8.3	9.4	-5.4	5.8	4.0
Manufacture of wood and of products of wood and cork, except furniture; manufacture of articles of straw and plaiting materials	C16	-5.9	-2.8	1.8	-0.5	-18.8	-13.2
Manufacture of paper and paper products	C17	0.5	-6.1	-7.7	1.1	-4.8	-4.6
Printing and reproduction of recorded media	C18	-3.0	-7.0	-1.7	2.0	-6.5	-4.7
Manufacture of coke and refined petroleum products	C19	..	..	..	..	..	..
Manufacture of chemicals and chemical products	C20	6.8	13.1	24.5	3.6	-7.6	-4.0
Manufacture of basic pharmaceutical products and pharmaceutical preparations	C21	-6.3	13.7	22.5	2.7	2.8	6.1
Manufacture of rubber and plastic products	C22	10.5	7.2	13.0	9.6	4.8	1.3
Manufacture of other non-metallic mineral products	C23	8.6	9.2	5.5	39.5	7.0	1.7
Manufacture of basic metals	C24	5.2	11.4	26.0	22.4	-2.8	-5.6
Manufacture of fabricated metal products, except machinery and equipment	C25	21.2	0.7	-16.7	21.6	-5.5	-2.3
Manufacture of computer, electronic and optical products	C26	10.3	15.4	18.3	0.7	11.9	8.5
Manufacture of electrical equipment	C27	8.0	5.0	15.7	11.1	2.9	10.7
Manufacture of machinery and equipment n.e.c.	C28	17.3	9.5	13.1	16.9	2.0	1.5
Manufacture of motor vehicles, trailers and semi-trailers	C29	15.7	11.6	11.6	17.5	16.1	9.6
Manufacture of other transport equipment	C30	16.7	47.1	-2.5	33.0	62.2	52.4
Manufacture of furniture	C31	-8.4	-9.8	9.9	15.9	11.0	6.1
Other manufacturing	C32	6.8	3.3	7.2	-9.5	-1.0	-3.2
Repair and installation of machinery and equipment	C33	-7.1	12.0	12.3	30.0	11.7	15.1
<b>Electricity, gas, steam and air conditioning supply</b>	<b>D</b>	<b>-8.3</b>	<b>-4.6</b>	<b>-4.9</b>	<b>-8.4</b>	<b>-2.4</b>	<b>7.8</b>
Electricity, gas, steam and air conditioning supply	D35	-8.3	-4.6	-4.9	-8.4	-2.4	7.8

<sup>1</sup> Working day adjusted.

<sup>2</sup> ‘.’ - Confidential data.

Table 3

**Industrial Production Indices<sup>1</sup>**  
**(Seasonally adjusted, 2015 = 100)**

NACE.BG - 2008	2017										2018		
	III	IV	V	VI	VII	VIII	IX	X	XI	XII	I	II	III
<b>B_TO_E36</b>	<b>107.2</b>	<b>105.4</b>	<b>108.4</b>	<b>106.7</b>	<b>107.0</b>	<b>106.8</b>	<b>107.3</b>	<b>106.5</b>	<b>106.7</b>	<b>107.7</b>	<b>107.2</b>	<b>106.0</b>	<b>108.4</b>
<b>B</b>	<b>105.7</b>	<b>97.9</b>	<b>105.1</b>	<b>107.2</b>	<b>104.0</b>	<b>112.3</b>	<b>109.5</b>	<b>104.4</b>	<b>102.9</b>	<b>100.4</b>	<b>101.0</b>	<b>96.3</b>	<b>96.5</b>
<b>B05</b>	100.6	96.0	107.8	101.5	92.7	94.7	95.2	93.6	79.4	86.0	81.6	74.8	94.0
<b>B06</b>	..	..	..	..	..	..	..	..	..	..	..	..	..
<b>B07</b>	116.0	102.9	107.4	113.5	118.2	129.5	126.9	117.5	120.0	110.0	124.4	122.1	109.9
<b>B08</b>	81.2	79.3	81.2	87.6	76.9	79.5	82.5	84.8	95.1	89.8	113.5	105.3	94.5
<b>B09</b>	..	..	..	..	..	..	..	..	..	..	..	..	..
<b>C</b>	<b>111.0</b>	<b>108.6</b>	<b>111.9</b>	<b>109.7</b>	<b>110.4</b>	<b>110.1</b>	<b>111.1</b>	<b>111.1</b>	<b>112.0</b>	<b>114.2</b>	<b>114.2</b>	<b>110.5</b>	<b>112.0</b>
<b>C10</b>	103.1	99.3	105.2	110.3	106.9	102.8	103.7	104.8	105.1	110.7	110.1	103.6	111.0
<b>C11</b>	100.9	94.2	97.0	95.5	99.8	93.9	99.0	100.6	93.5	97.0	102.6	96.4	98.7
<b>C12</b>	74.8	72.5	81.1	76.4	60.9	71.4	68.8	65.5	64.0	57.7	57.4	63.7	63.4
<b>C13</b>	100.4	100.0	100.5	100.6	98.6	97.6	101.6	99.7	103.0	101.1	97.5	95.9	100.4
<b>C14</b>	105.5	98.2	98.4	98.5	96.2	93.8	97.4	96.1	99.5	95.5	92.2	93.6	95.8
<b>C15</b>	102.1	96.7	101.2	96.4	82.7	84.7	87.1	92.2	91.5	99.0	90.4	99.2	104.6
<b>C16</b>	89.1	89.8	91.5	88.8	84.7	81.0	84.0	83.8	84.4	87.5	87.8	79.5	78.1
<b>C17</b>	105.0	99.2	105.5	101.2	98.9	102.6	101.2	104.3	103.9	96.5	103.2	98.7	101.0
<b>C18</b>	109.5	100.3	106.0	102.1	105.8	99.8	100.2	102.5	99.5	98.6	105.4	98.0	103.8
<b>C19</b>	..	..	..	..	..	..	..	..	..	..	..	..	..
<b>C20</b>	117.0	118.8	117.2	117.1	123.6	127.8	123.6	123.6	122.3	124.0	113.9	110.7	110.6
<b>C21</b>	103.4	93.4	106.0	111.2	112.7	111.0	108.1	98.6	112.4	115.2	109.5	104.5	110.8
<b>C22</b>	121.8	119.0	119.6	117.3	115.9	121.5	124.6	123.9	123.9	127.6	128.5	125.6	124.4
<b>C23</b>	103.7	100.0	100.9	98.4	99.6	102.5	101.0	104.1	104.9	103.0	116.8	108.1	107.8
<b>C24</b>	116.3	113.5	114.5	111.9	107.9	109.7	116.6	119.6	123.3	127.9	124.9	117.8	117.4
<b>C25</b>	137.2	154.5	142.4	131.3	156.3	138.7	126.3	137.2	135.3	123.0	128.7	126.7	134.0
<b>C26</b>	138.7	130.1	119.9	130.3	127.9	134.1	118.3	133.4	135.6	131.0	138.1	138.7	148.2
<b>C27</b>	102.0	102.1	107.0	106.9	103.7	103.8	110.8	109.9	107.5	113.2	111.1	106.5	112.4
<b>C28</b>	112.7	114.2	126.4	114.4	117.6	117.0	117.5	121.0	120.9	125.3	122.8	115.2	115.8
<b>C29</b>	118.9	110.8	117.6	111.9	117.3	116.1	123.0	128.4	127.2	128.1	132.0	131.7	131.4
<b>C30</b>	91.3	83.8	97.5	102.1	91.2	90.7	98.7	97.4	115.8	91.5	121.8	130.2	128.1
<b>C31</b>	107.9	107.2	109.6	104.9	102.1	102.3	100.5	99.5	101.4	112.2	114.4	112.9	113.9
<b>C32</b>	135.5	129.8	125.7	131.9	115.4	138.0	135.8	125.3	137.8	145.4	145.2	137.5	132.1
<b>C33</b>	95.5	96.6	110.9	97.2	120.1	95.2	104.9	90.2	106.4	111.1	112.1	107.4	109.7
<b>D</b>	<b>93.1</b>	<b>95.5</b>	<b>97.7</b>	<b>96.8</b>	<b>96.3</b>	<b>95.2</b>	<b>94.5</b>	<b>90.5</b>	<b>92.2</b>	<b>92.7</b>	<b>93.9</b>	<b>95.4</b>	<b>99.1</b>
<b>D35</b>	93.1	95.5	97.7	96.8	96.3	95.2	94.5	90.5	92.2	92.7	93.9	95.4	99.1

<sup>1</sup> '..' - Confidential data.

**Table 4**

**Industrial Production Indices<sup>1</sup>**  
**(Working day adjusted, 2015 = 100)**

NACE.BG - 2008	2015	2016	2017										2018		
	III	III	III	IV	V	VI	VII	VIII	IX	X	XI	XII	I	II	III
<b>B_TO_E36</b>	<b>99.7</b>	<b>102.1</b>	<b>108.7</b>	<b>102.0</b>	<b>103.9</b>	<b>108.5</b>	<b>110.6</b>	<b>103.1</b>	<b>106.9</b>	<b>109.6</b>	<b>113.1</b>	<b>113.6</b>	<b>102.4</b>	<b>99.5</b>	<b>110.5</b>
<b>B</b>	<b>90.7</b>	<b>96.9</b>	<b>101.0</b>	<b>91.7</b>	<b>98.4</b>	<b>102.2</b>	<b>103.0</b>	<b>110.6</b>	<b>113.5</b>	<b>118.1</b>	<b>111.4</b>	<b>109.2</b>	<b>97.9</b>	<b>90.3</b>	<b>92.2</b>
<b>B05</b>	83.3	64.4	87.3	78.7	92.5	81.5	85.8	92.3	102.3	115.8	93.0	104.2	94.5	74.5	82.2
<b>B06</b>	..	..	..	..	..	..	..	..	..	..	..	..	..	..	..
<b>B07</b>	97.3	117.3	115.5	103.1	105.8	117.6	118.0	127.1	126.6	125.2	125.2	115.8	116.0	112.9	108.3
<b>B08</b>	84.0	88.7	73.3	78.6	84.7	96.8	85.6	87.4	89.9	98.4	107.8	93.2	70.4	78.9	84.7
<b>B09</b>	..	..	..	..	..	..	..	..	..	..	..	..	..	..	..
<b>C</b>	<b>97.8</b>	<b>102.3</b>	<b>112.8</b>	<b>108.4</b>	<b>111.8</b>	<b>116.6</b>	<b>117.8</b>	<b>106.1</b>	<b>112.7</b>	<b>116.3</b>	<b>118.2</b>	<b>113.5</b>	<b>99.3</b>	<b>99.3</b>	<b>113.6</b>
<b>C10</b>	95.6	97.9	101.1	95.2	103.4	113.7	108.5	106.0	111.6	115.5	112.6	115.6	92.8	89.2	109.0
<b>C11</b>	90.9	96.3	95.2	96.5	103.5	115.7	127.8	118.0	107.5	89.8	82.6	100.7	63.3	67.1	93.4
<b>C12</b>	117.1	91.3	82.2	68.9	85.7	84.2	66.4	73.9	67.3	63.1	62.6	56.3	36.0	50.2	64.1
<b>C13</b>	102.8	118.3	112.1	110.5	115.5	111.7	102.3	76.7	97.7	102.4	107.4	86.6	82.4	93.3	112.6
<b>C14</b>	90.2	95.7	102.3	90.4	89.7	107.0	110.5	90.6	95.0	96.9	99.3	95.7	95.1	91.4	93.8
<b>C15</b>	95.8	96.4	103.0	84.5	86.0	100.4	97.6	82.3	94.7	96.3	93.4	92.9	90.7	97.2	107.2
<b>C16</b>	103.5	98.0	88.0	88.6	91.4	96.3	92.0	82.0	87.9	92.5	91.5	81.5	70.1	69.1	76.4
<b>C17</b>	104.2	106.8	108.8	100.1	107.7	106.8	102.5	102.0	102.0	105.4	104.6	90.0	100.4	95.0	103.7
<b>C18</b>	97.5	105.2	110.6	96.0	102.6	103.7	105.6	93.2	99.4	109.8	112.9	107.6	94.5	89.4	105.3
<b>C19</b>	..	..	..	..	..	..	..	..	..	..	..	..	..	..	..
<b>C20</b>	100.6	102.4	124.2	124.9	118.0	116.5	127.8	126.6	121.1	122.6	126.0	124.2	105.7	103.2	119.2
<b>C21</b>	109.0	108.4	110.6	92.1	103.4	119.4	107.9	97.1	105.0	102.2	119.4	118.9	102.5	102.9	117.3
<b>C22</b>	96.4	109.7	125.0	121.5	120.7	126.1	123.8	119.2	129.4	137.0	128.1	107.6	113.1	113.9	126.6
<b>C23</b>	93.3	97.3	101.2	104.4	109.1	106.9	108.4	108.8	109.2	116.7	113.3	91.9	80.7	85.0	102.9
<b>C24</b>	91.3	83.4	127.3	112.5	114.7	118.1	111.6	96.4	119.5	124.7	127.1	115.4	126.5	105.2	120.2
<b>C25</b>	87.7	119.9	138.4	153.6	137.6	141.2	163.6	137.6	130.5	139.3	146.4	146.2	93.1	110.8	135.2
<b>C26</b>	103.0	102.5	147.0	129.0	118.9	137.0	130.8	117.2	113.4	139.8	144.6	138.9	129.7	128.2	159.5
<b>C27</b>	103.3	113.1	107.4	99.7	105.1	113.0	110.0	89.8	112.7	122.3	116.9	102.4	103.0	100.7	118.9
<b>C28</b>	104.5	107.1	120.4	115.0	127.6	123.6	125.0	104.5	115.7	123.7	128.9	120.6	108.2	110.0	122.3
<b>C29</b>	104.7	119.0	128.7	111.4	118.3	113.8	115.3	95.6	122.9	138.3	135.3	116.9	134.8	133.2	141.0
<b>C30</b>	107.2	120.5	100.9	85.5	110.4	107.2	86.9	77.6	90.9	90.8	115.5	89.1	115.2	128.5	153.7
<b>C31</b>	91.6	105.5	107.3	105.9	108.1	106.6	104.5	101.7	103.8	108.2	111.1	115.0	98.1	100.5	113.9
<b>C32</b>	90.4	124.3	136.9	125.4	125.3	149.4	114.1	141.7	144.4	143.2	145.5	129.3	125.1	119.0	132.5
<b>C33</b>	107.4	82.4	92.7	85.8	104.9	98.1	123.9	92.4	110.5	94.4	124.4	152.3	79.1	89.4	106.7
<b>D</b>	<b>111.2</b>	<b>104.9</b>	<b>99.8</b>	<b>85.9</b>	<b>80.1</b>	<b>84.1</b>	<b>89.1</b>	<b>87.3</b>	<b>83.0</b>	<b>83.9</b>	<b>98.3</b>	<b>116.3</b>	<b>116.9</b>	<b>104.6</b>	<b>107.6</b>
<b>D35</b>	111.2	104.9	99.8	85.9	80.1	84.1	89.1	87.3	83.0	83.9	98.3	116.3	116.9	104.6	107.6

<sup>1</sup> ... - Confidential data.