

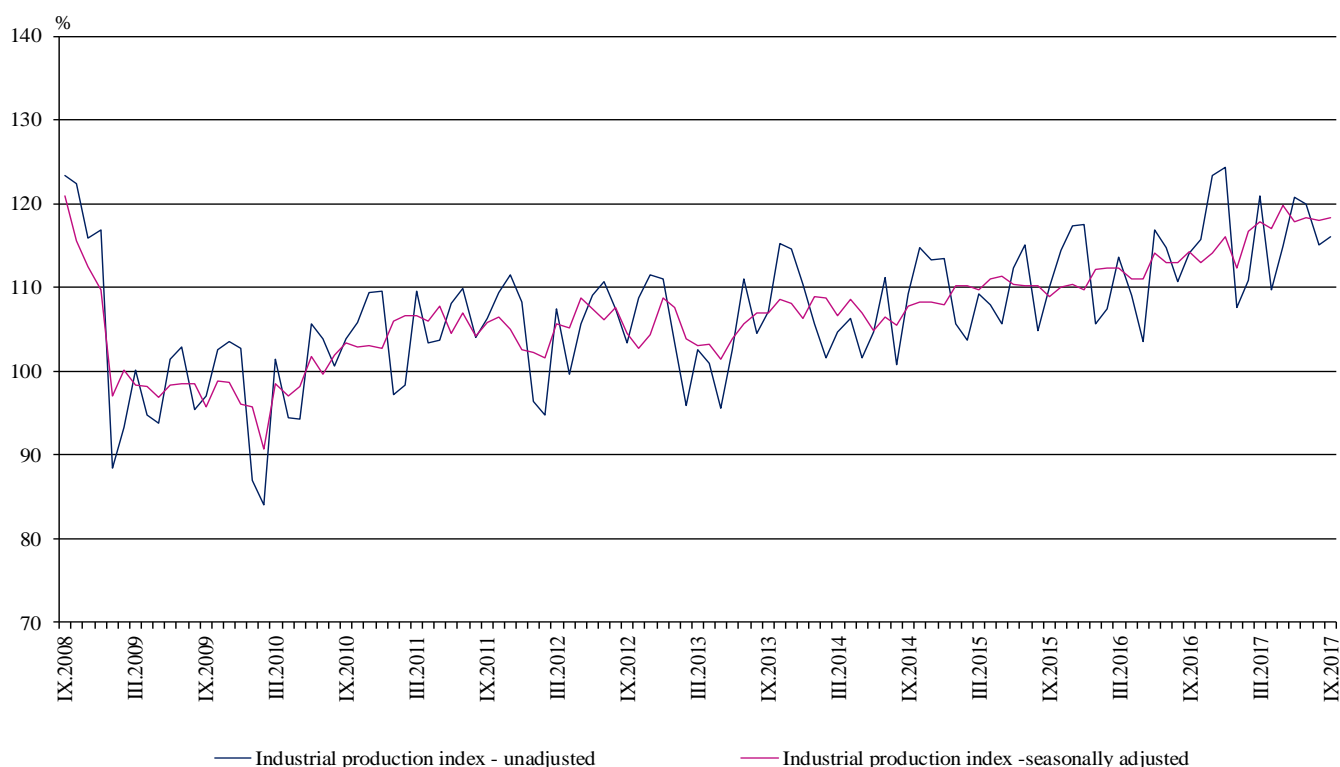


INDUSTRIAL PRODUCTION INDICES IN SEPTEMBER 2017¹

According to the preliminary data the Industrial Production Index², seasonally adjusted³, increased by 0.3% in September 2017 as compared to August 2017.

In September 2017 working day adjusted⁴ Industrial Production Index rose by 3.2% in comparison with the same month of 2016.

Figure 1. Industrial Production Indices (2010 = 100)



¹ September 2017 data are preliminary. The final data on Industrial Production and Turnover Indices for August 2017 can be found on the NSI website: <http://www.nsi.bg/en>.

² Monthly Industrial Production and Industrial turnover indices measure changes in production and turnover values of industrial enterprises. This information can be used to assess the current economic development and for short-term forecasts. Indices do not measure the actual production level, it aims to measure the average change in value of production between two points of time. Indices are compiled on the base of information collected through representative sampling survey on industrial enterprises. The sample covers enterprises with annual turnover more than 97% of total turnover in industry.

Industrial production indices are calculated at constant base year that is to say they are weighted with the structure of the value added at factor costs in the base year.

³ Seasonal adjustment is a statistical method, which eliminates the seasonal component of time series.

⁴ Working day adjustment is an adjustment for variations caused by calendar effects, different number of calendar and working days in the months, national holidays and outliers (for example the presence of more non-working days in May could contribute to the decline in the production in some activities).

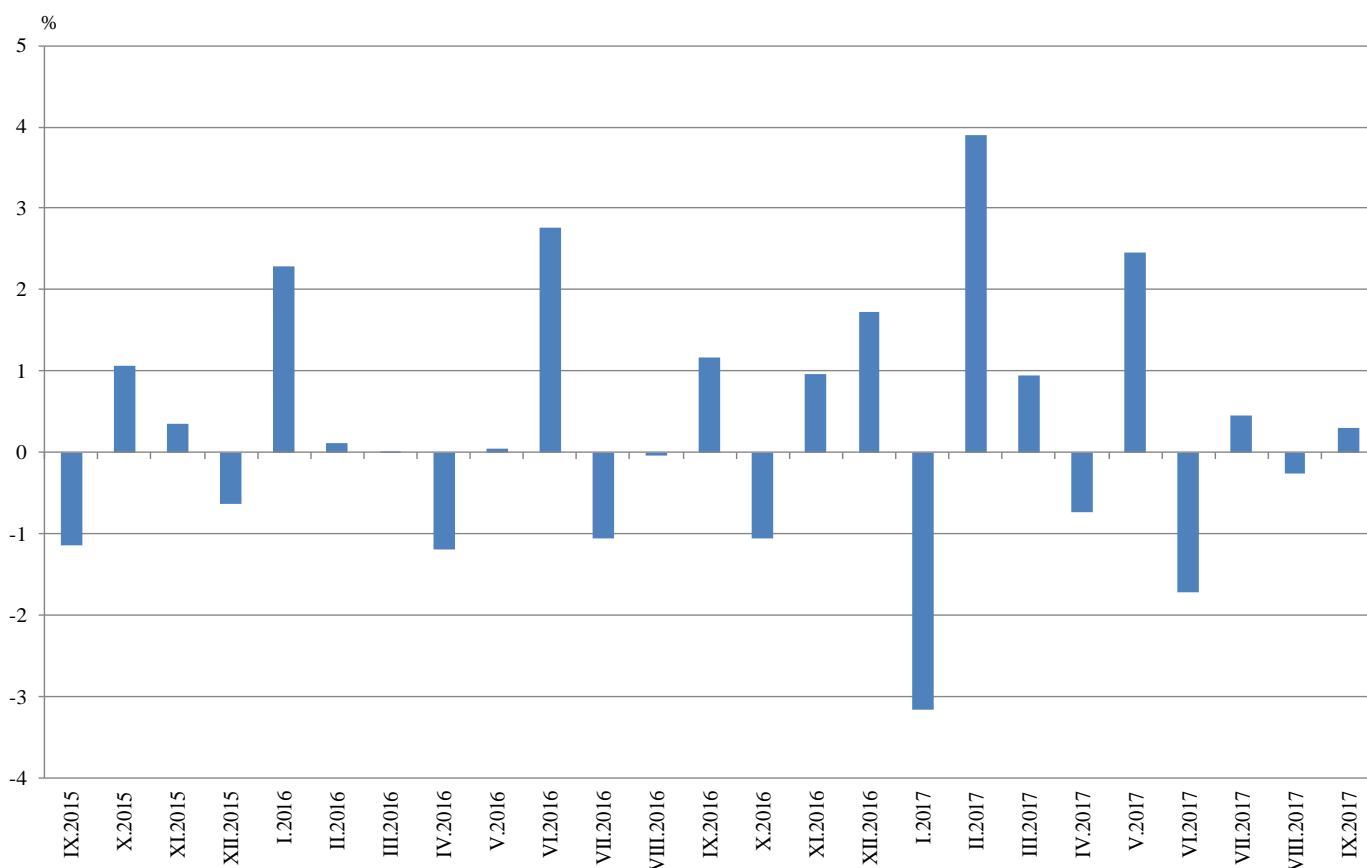


Monthly comparisons

In September 2017 as compared to August 2017, the seasonally adjusted Industrial Production Index increased in the manufacturing by 0.6%, while the production fell in the mining and quarrying industry by 0.8% and in the electricity, gas, steam and air conditioning supply by 0.5%.

The most significant production increases in the manufacturing were registered in the manufacture of other transport equipment by 11.0%, in the repair and installation of machinery and equipment by 10.3%, in the manufacture of beverages by 6.3%, in the manufacture of motor vehicles, trailers and semi-trailers by 5.8%. There were decreases in the manufacture of computer, electronic and optical products by 12.9%, in the manufacture of chemicals and chemical products by 9.3%, in the manufacture of fabricated metal products, except machinery and equipment by 5.7%, in the manufacture of tobacco products by 4.1%.

**Figure 2. Changes of Industrial Production Indices compared to the previous month
(Seasonally adjusted)**



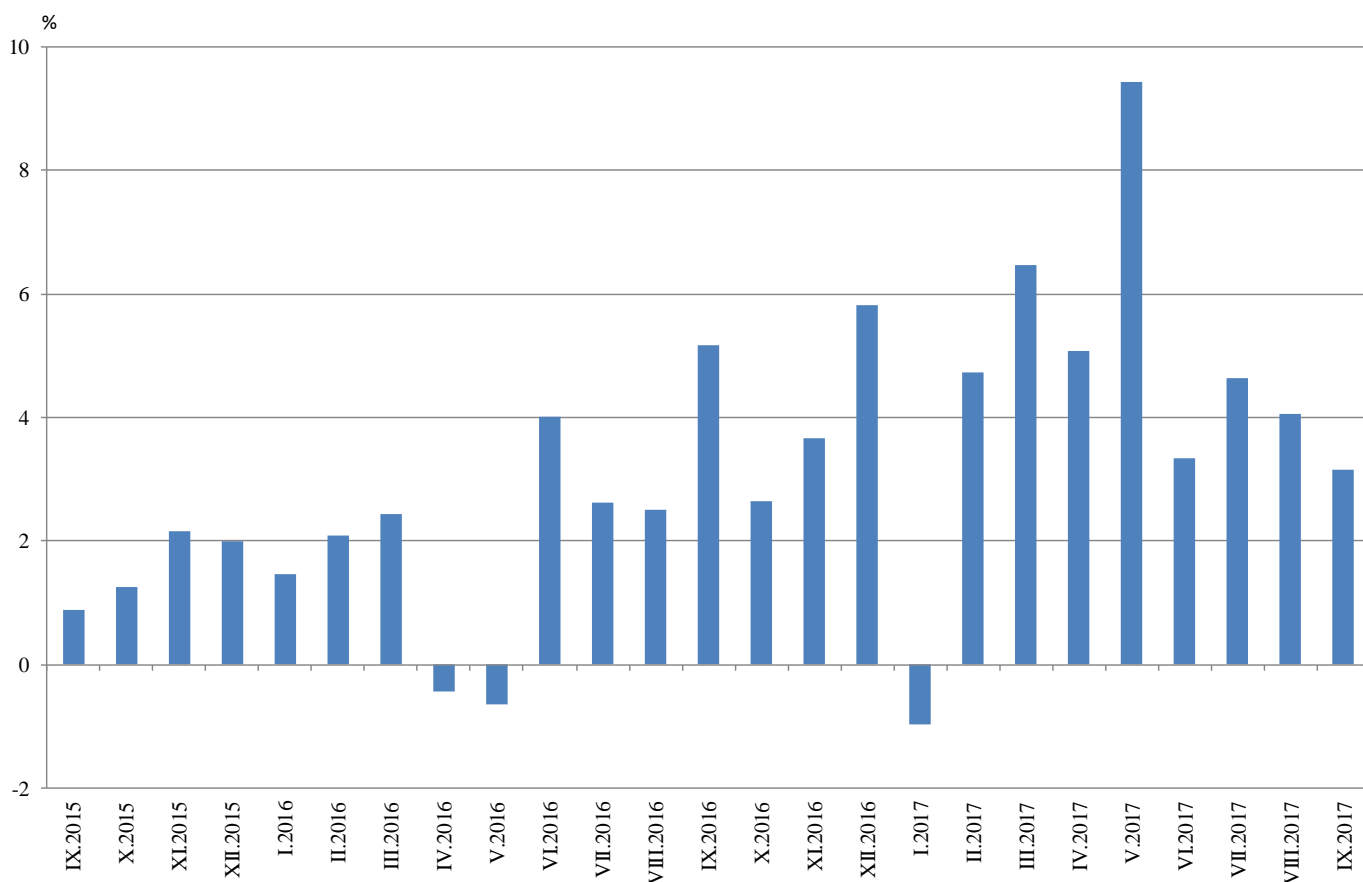


Annual comparisons

On annual basis in September 2017 Industrial Production Index calculated from working day adjusted data rose in mining and quarrying industry by 7.7% and in the manufacturing by 4.3%, while the production went down in the electricity, gas, steam and air conditioning supply by 3.5%.

In the manufacturing, the more considerable increases compared to the same month of the previous year were registered in the manufacture of basic metals by 28.1%, in the manufacture of machinery and equipment by 17.9%, in the manufacture of motor vehicles, trailers and semi-trailers by 14.2%, in the manufacture of rubber and plastic products by 13.9%. Decreases were seen in the manufacture of leather and related products by 12.5%, in the manufacture of fabricated metal products, except machinery and equipment by 7.9%, in the manufacture of wearing apparel by 6.6%, in the manufacture of furniture by 5.7%.

Figure 3. Changes of Industrial Production Indices compared to the same month of the previous year (Working day adjusted)



Annex

Table 1
Changes of Industrial Production Indices compared to the previous month^{1,2}
(Per cent)

Economic activities	NACE.BG - 2008	2017					
		IV	V	VI	VII	VIII	IX
Industry	B_TO_E36	-0.7	2.5	-1.7	0.5	-0.3	0.3
Mining and quarrying	B	-2.9	4.0	0.7	0.2	4.3	-0.8
Mining of coal and lignite	B05	-3.1	11.0	-4.5	-7.0	0.6	2.3
Extraction of crude petroleum and natural gas	B06
Mining of metal ores	B07	-6.8	-1.8	11.2	3.0	4.9	1.4
Other mining and quarrying	B08	-0.1	-0.5	6.2	-10.8	2.1	5.2
Mining support service activities	B09
Manufacturing	C	-1.2	2.3	-2.5	0.6	-0.5	0.6
Manufacture of food products	C10	-3.9	6.4	4.7	-3.2	-4.2	-1.7
Manufacture of beverages	C11	-4.0	0.7	-3.4	4.1	-5.7	6.3
Manufacture of tobacco products	C12	5.2	5.0	-10.9	-20.3	23.5	-4.1
Manufacture of textiles	C13	2.3	0.5	-2.8	-2.0	1.2	2.0
Manufacture of wearing apparel	C14	-6.8	2.1	-0.1	-4.5	-1.2	3.7
Manufacture of leather and related products	C15	-4.3	5.6	-5.6	-13.0	0.7	2.9
Manufacture of wood and of products of wood and cork, except furniture; manufacture of articles of straw and plaiting materials	C16	3.2	-0.2	-4.4	-5.4	-2.5	3.1
Manufacture of paper and paper products	C17	-5.3	6.1	-3.3	-2.3	4.1	-1.2
Printing and reproduction of recorded media	C18	-8.3	5.4	-2.7	2.2	-4.9	-0.3
Manufacture of coke and refined petroleum products	C19
Manufacture of chemicals and chemical products	C20	5.3	-2.4	-4.6	12.0	6.1	-9.3
Manufacture of basic pharmaceutical products and pharmaceutical preparations	C21	-10.1	15.0	6.1	-1.4	-1.1	-2.9
Manufacture of rubber and plastic products	C22	-4.0	2.6	-2.3	-2.4	6.1	1.1
Manufacture of other non-metallic mineral products	C23	0.1	-1.0	-2.3	1.9	2.2	0.2
Manufacture of basic metals	C24	-4.6	3.1	-2.6	-6.3	3.3	5.4
Manufacture of fabricated metal products, except machinery and equipment	C25	17.7	-11.7	-7.1	19.4	-11.9	-5.7
Manufacture of computer, electronic and optical products	C26	-6.6	-7.7	9.6	-2.3	4.1	-12.9
Manufacture of electrical equipment	C27	-3.5	7.7	-0.4	-4.4	1.4	4.7
Manufacture of machinery and equipment n.e.c.	C28	2.1	11.0	-10.0	3.0	-1.1	-0.3
Manufacture of motor vehicles, trailers and semi-trailers	C29	-4.7	3.3	-5.2	4.7	-0.8	5.8
Manufacture of other transport equipment	C30	-4.6	9.8	5.9	-8.5	0.1	11.0
Manufacture of furniture	C31	-0.1	1.6	-4.3	-3.4	0.1	-2.1
Other manufacturing	C32	3.8	-9.0	3.6	-7.6	12.4	4.1
Repair and installation of machinery and equipment	C33	3.5	12.9	-11.8	22.9	-21.2	10.3
Electricity, gas, steam and air conditioning supply	D	3.8	2.0	0.1	-1.0	-0.9	-0.5
Electricity, gas, steam and air conditioning supply	D35	3.8	2.0	0.1	-1.0	-0.9	-0.5

¹ Seasonally adjusted.

² ‘.’ - Confidential data.

Table 2

Changes of Industrial Production Indices compared to the same month of the previous year^{1,2}
(Per cent)

Economic activities	NACE.BG - 2008	2017					
		IV	V	VI	VII	VIII	IX
Industry	B_TO_E36	5.1	9.4	3.3	4.6	4.1	3.2
Mining and quarrying	B	-2.0	6.2	7.8	3.9	13.0	7.7
Mining of coal and lignite	B05	18.8	25.6	29.8	7.2	14.5	15.3
Extraction of crude petroleum and natural gas	B06
Mining of metal ores	B07	-7.4	0.4	1.4	5.1	17.9	7.3
Other mining and quarrying	B08	-13.0	-12.5	-2.7	-17.7	-17.9	-4.6
Mining support service activities	B09
Manufacturing	C	8.6	13.7	4.7	6.4	5.2	4.3
Manufacture of food products	C10	-1.2	2.7	8.6	3.7	-4.1	-0.3
Manufacture of beverages	C11	-9.2	2.7	-8.9	-6.9	-13.0	-3.2
Manufacture of tobacco products	C12	35.2	60.1	20.6	-26.4	3.8	9.7
Manufacture of textiles	C13	0.2	-5.5	-1.7	-0.8	1.4	0.2
Manufacture of wearing apparel	C14	-6.0	-2.7	-2.5	-10.5	-5.8	-6.6
Manufacture of leather and related products	C15	-4.9	10.2	3.4	-15.1	-2.3	-12.5
Manufacture of wood and of products of wood and cork, except furniture; manufacture of articles of straw and plaiting materials	C16	1.7	1.1	-2.1	-4.7	-9.6	0.0
Manufacture of paper and paper products	C17	-4.4	2.5	-4.5	-5.3	-3.0	-1.9
Printing and reproduction of recorded media	C18	0.6	9.1	1.1	3.2	-1.6	-1.8
Manufacture of coke and refined petroleum products	C19
Manufacture of chemicals and chemical products	C20	22.1	12.8	12.0	8.9	15.6	7.8
Manufacture of basic pharmaceutical products and pharmaceutical preparations	C21	-7.4	13.8	16.4	19.5	22.6	11.6
Manufacture of rubber and plastic products	C22	8.9	14.8	7.0	4.2	11.5	13.9
Manufacture of other non-metallic mineral products	C23	2.8	9.4	1.1	6.2	7.4	9.5
Manufacture of basic metals	C24	8.9	41.8	46.3	-4.4	7.3	28.1
Manufacture of fabricated metal products, except machinery and equipment	C25	43.0	38.4	-8.4	37.4	15.5	-7.9
Manufacture of computer, electronic and optical products	C26	30.9	13.4	26.0	18.6	24.7	3.7
Manufacture of electrical equipment	C27	-1.4	9.4	4.0	-1.5	1.0	7.7
Manufacture of machinery and equipment n.e.c.	C28	21.4	35.3	11.6	12.3	15.8	17.9
Manufacture of motor vehicles, trailers and semi-trailers	C29	2.5	4.7	-2.3	7.6	1.9	14.2
Manufacture of other transport equipment	C30	-23.5	2.7	16.8	0.0	-15.5	12.4
Manufacture of furniture	C31	3.9	7.3	6.3	-3.9	0.7	-5.7
Other manufacturing	C32	29.7	3.4	9.5	7.6	10.0	11.7
Repair and installation of machinery and equipment	C33	5.6	14.8	5.2	24.5	3.7	-1.1
Electricity, gas, steam and air conditioning supply	D	-4.0	-5.1	-4.5	-1.4	-3.8	-3.5
Electricity, gas, steam and air conditioning supply	D35	-4.0	-5.1	-4.5	-1.4	-3.8	-3.5

¹ Working day adjusted.

² ‘..’ - Confidential data.

Table 3

Industrial Production Indices¹
(Seasonally adjusted, 2010 = 100)

NACE.BG - 2008	2016				2017								
	IX	X	XI	XII	I	II	III	IV	V	VI	VII	VIII	IX
B_TO_E36	114.2	113.0	114.1	116.0	112.4	116.7	117.8	117.0	119.9	117.8	118.3	118.0	118.4
B	101.2	101.0	104.5	104.0	103.7	109.0	102.6	99.7	103.6	104.4	104.6	109.1	108.2
B05	93.6	106.2	118.0	104.5	101.4	121.6	111.7	108.3	120.2	114.8	106.7	107.4	109.9
B06
B07	105.5	99.3	108.7	105.2	96.8	100.7	101.4	94.6	92.9	103.3	106.4	111.6	113.2
B08	99.7	95.5	100.1	94.0	89.6	106.3	93.7	93.6	93.2	98.9	88.2	90.0	94.7
B09
C	120.3	118.7	120.3	122.8	116.7	124.1	127.3	125.8	128.7	125.5	126.3	125.6	126.3
C10	90.4	91.9	92.1	89.9	88.3	93.8	92.5	88.9	94.6	99.0	95.8	91.9	90.3
C11	104.1	106.1	105.0	102.7	91.0	102.5	102.4	98.3	99.0	95.6	99.6	93.9	99.9
C12	65.0	76.6	78.4	81.0	78.3	79.4	79.0	83.1	87.2	77.7	62.0	76.5	73.4
C13	109.2	109.1	108.9	101.3	98.7	114.6	108.6	111.1	111.7	108.6	106.4	107.7	109.8
C14	100.5	97.1	90.2	94.5	94.0	97.8	100.4	93.6	95.5	95.4	91.2	90.1	93.4
C15	74.9	71.8	75.1	69.8	71.6	70.8	77.3	74.0	78.1	73.7	64.1	64.6	66.4
C16	82.6	86.2	84.4	85.5	88.3	97.0	89.2	92.0	91.9	87.8	83.1	81.0	83.5
C17	129.0	129.5	138.8	129.0	131.3	132.0	129.8	122.9	130.5	126.1	123.2	128.3	126.7
C18	115.8	120.4	122.0	114.1	117.7	119.1	126.2	115.7	122.0	118.7	121.4	115.5	115.2
C19
C20	118.5	125.0	117.9	111.7	114.2	125.6	121.1	127.6	124.5	118.8	133.1	141.2	128.1
C21	140.7	145.9	148.7	141.4	151.8	145.5	151.5	136.3	156.8	166.4	164.1	162.3	157.6
C22	143.2	147.5	154.1	148.0	148.9	154.9	162.2	155.6	159.7	156.0	152.3	161.6	163.3
C23	119.3	122.0	120.4	121.4	117.0	128.8	129.3	129.4	128.2	125.3	127.7	130.5	130.8
C24	100.5	103.4	105.7	108.1	105.5	113.0	115.9	110.5	114.0	111.1	104.0	107.4	113.3
C25	181.7	148.7	168.4	190.3	124.8	169.2	177.4	208.8	184.5	171.3	204.6	180.3	170.0
C26	159.4	175.8	171.7	158.7	196.2	179.3	203.1	189.6	174.9	191.6	187.2	194.9	169.7
C27	148.0	146.4	148.1	144.6	142.9	145.0	149.0	143.8	154.9	154.3	147.5	149.6	156.6
C28	139.1	145.5	156.2	158.0	146.9	157.9	159.7	163.0	180.9	162.8	167.6	165.8	165.2
C29	169.4	174.6	176.5	179.5	181.4	180.9	185.9	177.2	183.1	173.6	181.8	180.2	190.6
C30	87.3	80.9	81.3	83.1	98.8	86.3	83.9	80.1	87.9	93.1	85.1	85.2	94.5
C31	131.8	133.6	138.6	130.4	122.3	130.6	136.9	136.8	139.0	133.0	128.5	128.6	126.0
C32	222.1	211.6	230.6	237.7	268.8	245.6	232.2	241.0	219.3	227.2	210.0	236.1	245.9
C33	95.1	85.6	84.3	89.0	78.5	86.1	85.4	88.3	99.7	87.9	108.1	85.1	93.9
D	102.6	102.1	100.7	102.5	111.4	102.8	96.9	100.5	102.6	102.7	101.7	100.8	100.2
D35	102.6	102.1	100.7	102.5	111.4	102.8	96.9	100.5	102.6	102.7	101.7	100.8	100.2

¹ '..' - Confidential data.



Table 4

Industrial Production Indices¹
(Working day adjusted, 2010 = 100)

NACE.BG - 2008	2014	2015	2016				2017								
	IX	IX	IX	X	XI	XII	I	II	III	IV	V	VI	VII	VIII	IX
B_TO_E36	107.6	108.5	114.1	117.7	122.4	122.5	106.8	111.1	119.9	113.0	114.3	119.7	122.0	113.7	117.7
B	95.3	104.1	104.6	111.7	117.1	114.4	99.2	105.2	98.8	92.0	96.1	99.9	102.7	108.1	112.6
B05	105.8	133.2	100.8	131.1	135.9	127.0	116.6	123.3	97.9	90.0	103.2	91.3	97.8	103.2	116.2
B06
B07	86.4	86.6	105.5	99.3	108.7	105.2	96.8	100.7	101.4	94.6	92.9	103.3	106.4	111.6	113.2
B08	125.0	122.3	109.5	112.6	112.2	97.1	52.1	79.5	83.7	92.4	96.6	110.5	99.8	100.6	104.5
B09
C	114.3	115.1	123.3	126.4	129.0	122.9	100.1	112.8	129.2	124.7	127.9	133.5	134.8	121.6	128.6
C10	96.2	94.4	97.5	101.4	99.0	94.0	74.0	81.2	90.8	85.3	92.6	101.9	97.3	94.8	97.2
C11	100.5	104.9	112.4	93.4	94.9	106.6	54.9	71.8	96.8	101.4	105.9	115.3	128.0	117.8	108.7
C12	121.9	86.7	65.6	75.2	79.3	89.8	60.6	63.3	85.5	77.0	87.3	83.4	72.1	75.0	71.9
C13	106.6	103.4	105.1	113.0	113.6	87.7	82.8	112.4	121.3	122.8	128.4	120.8	110.9	85.2	105.4
C14	91.9	91.7	98.9	99.6	87.3	95.1	98.0	95.1	96.8	85.4	86.7	105.0	105.4	85.7	92.4
C15	83.9	85.5	83.3	74.7	77.4	64.2	73.2	68.2	77.5	65.3	65.5	76.3	75.8	62.3	72.9
C16	97.4	102.6	87.9	97.7	93.9	79.6	67.7	83.5	87.8	90.4	91.2	96.2	91.7	81.6	88.0
C17	120.8	133.8	129.9	129.8	138.7	121.7	122.9	125.4	135.4	124.1	133.9	132.9	127.3	127.1	127.5
C18	107.1	112.5	116.0	129.0	140.0	126.5	103.5	109.9	127.4	110.3	117.3	119.5	120.6	107.6	113.9
C19
C20	111.8	111.8	119.1	125.1	121.5	108.9	105.5	117.9	131.5	131.9	124.7	122.9	135.4	135.2	128.4
C21	133.2	143.9	137.0	158.1	155.8	144.7	142.6	148.8	164.9	135.5	153.5	178.1	158.0	144.7	152.9
C22	136.4	139.3	148.1	161.5	159.6	127.3	131.0	143.1	166.9	157.5	161.0	168.4	160.8	159.6	168.6
C23	120.6	139.6	129.4	136.4	132.5	109.2	77.1	104.4	129.9	133.6	140.1	136.2	138.6	140.4	141.7
C24	94.5	77.3	91.5	115.8	112.8	90.9	102.3	107.4	125.9	109.8	113.3	116.7	109.5	96.2	117.2
C25	134.5	131.2	189.3	152.3	185.1	221.2	97.2	149.6	176.5	207.1	174.9	182.1	213.9	174.3	174.4
C26	134.7	137.3	158.0	183.9	182.8	171.4	181.5	165.0	214.5	187.6	173.0	201.9	190.9	171.2	163.9
C27	128.7	144.1	148.6	160.5	162.0	129.0	130.0	141.3	160.4	138.6	152.6	164.3	156.1	131.3	160.1
C28	150.3	140.3	138.5	149.4	167.9	152.2	128.9	153.3	171.7	163.3	182.1	176.1	177.5	148.7	163.3
C29	145.0	164.8	169.7	187.8	189.3	161.3	177.7	180.2	201.3	177.0	185.7	177.5	181.4	148.9	193.9
C30	62.0	95.4	78.2	75.3	73.6	85.0	81.1	78.2	94.4	84.3	103.6	100.3	84.2	72.2	87.8
C31	128.2	139.2	139.1	148.9	155.3	131.9	102.9	115.4	135.3	134.0	135.9	134.4	131.6	128.2	131.1
C32	159.2	178.8	233.1	242.5	242.4	205.0	237.5	211.0	235.4	232.3	216.5	256.9	207.2	242.0	260.4
C33	98.4	81.0	100.0	92.2	99.4	121.0	55.5	72.1	82.9	78.3	94.7	87.9	111.9	82.6	98.9
D	92.5	90.2	90.4	96.1	108.6	128.9	134.8	112.9	105.0	90.2	83.1	88.4	93.5	91.5	87.2
D35	92.5	90.2	90.4	96.1	108.6	128.9	134.8	112.9	105.0	90.2	83.1	88.4	93.5	91.5	87.2