

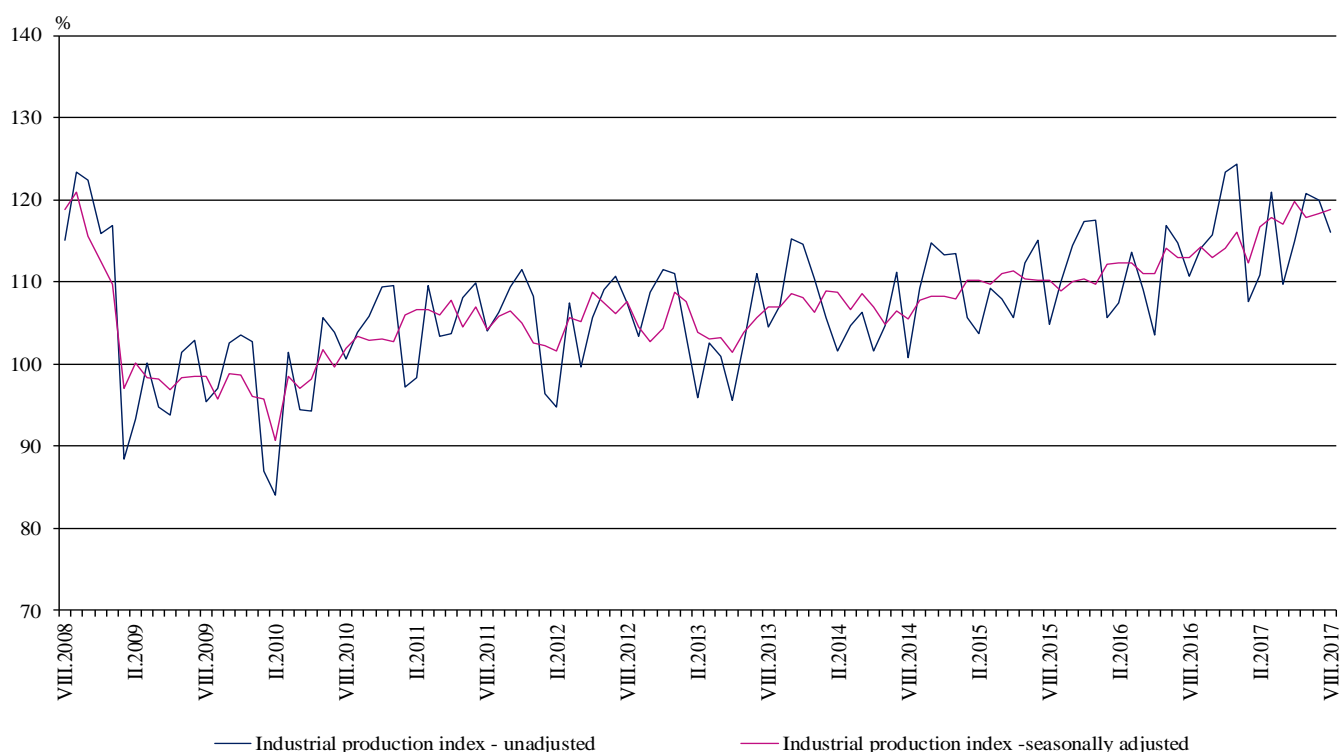


INDUSTRIAL PRODUCTION INDICES IN AUGUST 2017¹

According to the preliminary data the Industrial Production Index², seasonally adjusted³, increased by 0.4% in August 2017 as compared to July 2017.

In August 2017 working day adjusted⁴ Industrial Production Index rose by 4.9% in comparison with the same month of 2016.

Figure 1. Industrial Production Indices (2010 = 100)



¹ August 2017 data are preliminary. The final data on Industrial Production and Turnover Indices for July 2017 can be found on the NSI website: <http://www.nsi.bg/en>.

² Monthly Industrial Production and Industrial turnover indices measure changes in production and turnover values of industrial enterprises. This information can be used to assess the current economic development and for short-term forecasts. Indices do not measure the actual production level, it aims to measure the average change in value of production between two points of time. Indices are compiled on the base of information collected through representative sampling survey on industrial enterprises. The sample covers enterprises with annual turnover more than 97% of total turnover in industry.

Industrial production indices are calculated at constant base year that is to say they are weighted with the structure of the value added at factor costs in the base year.

³ Seasonal adjustment is a statistical method, which eliminates the seasonal component of time series.

⁴ Working day adjustment is an adjustment for variations caused by calendar effects, different number of calendar and working days in the months, national holidays and outliers (for example the presence of more non-working days in May could contribute to the decline in the production in some activities).

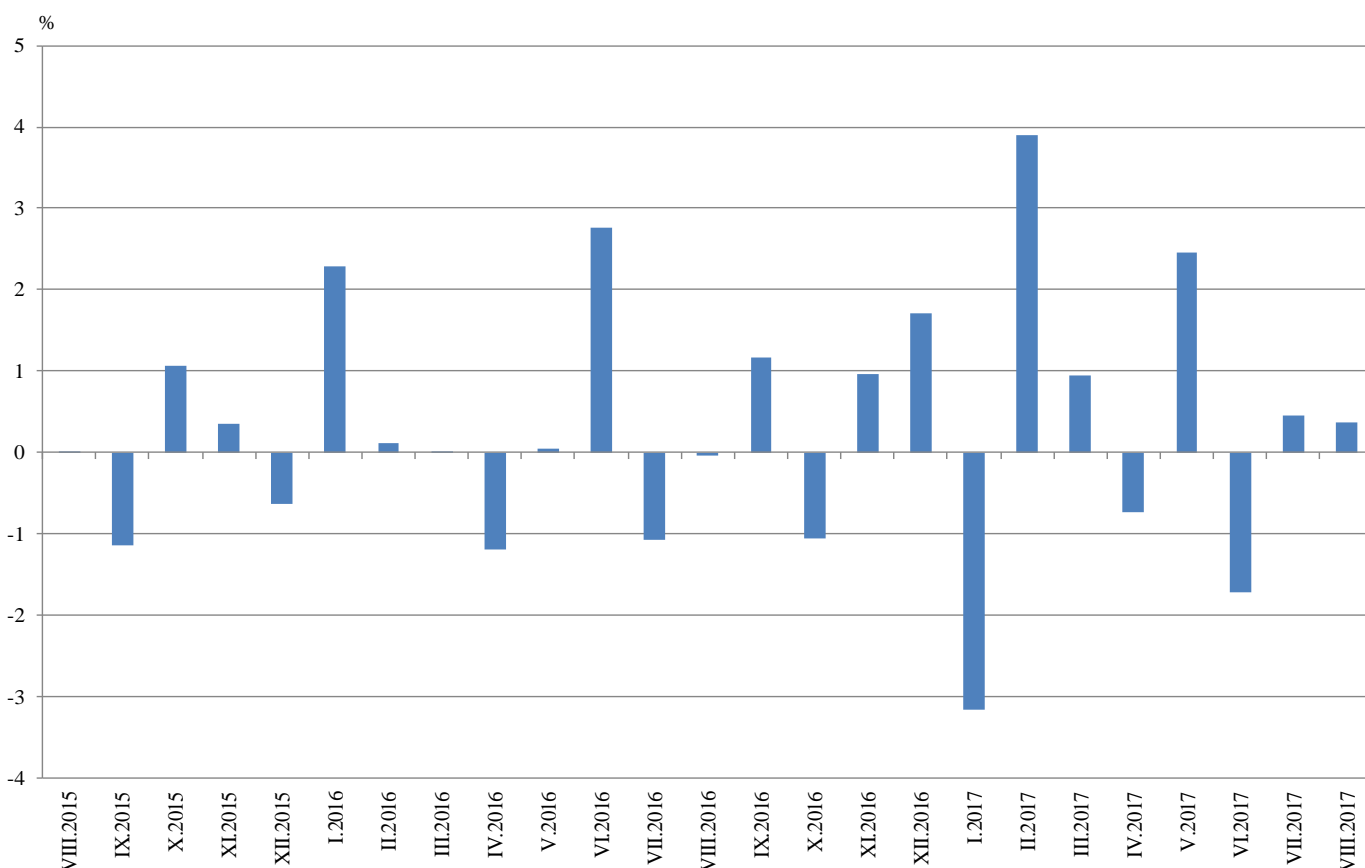


Monthly comparisons

In August 2017 as compared to July 2017, the seasonally adjusted Industrial Production Index increased in the mining and quarrying industry by 4.0% and in the manufacturing by 0.4%, while in the electricity, gas, steam and air conditioning supply decreased by 0.7%.

The most significant production increases in the manufacturing were registered in the manufacture of tobacco products by 28.3%, in the manufacture of computer, electronic and optical products by 7.6%, in the manufacture of machinery and equipment by 6.7%, in the manufacture of chemicals and chemical products by 6.2%. There were decreases in the repair and installation of machinery and equipment by 21.7%, in the manufacture of fabricated metal products, except machinery and equipment by 9.9%, in the manufacture of beverages by 6.2%, in printing and reproduction of recorded media by 4.6%.

**Figure 2. Changes of Industrial Production Indices compared to the previous month
(Seasonally adjusted)**



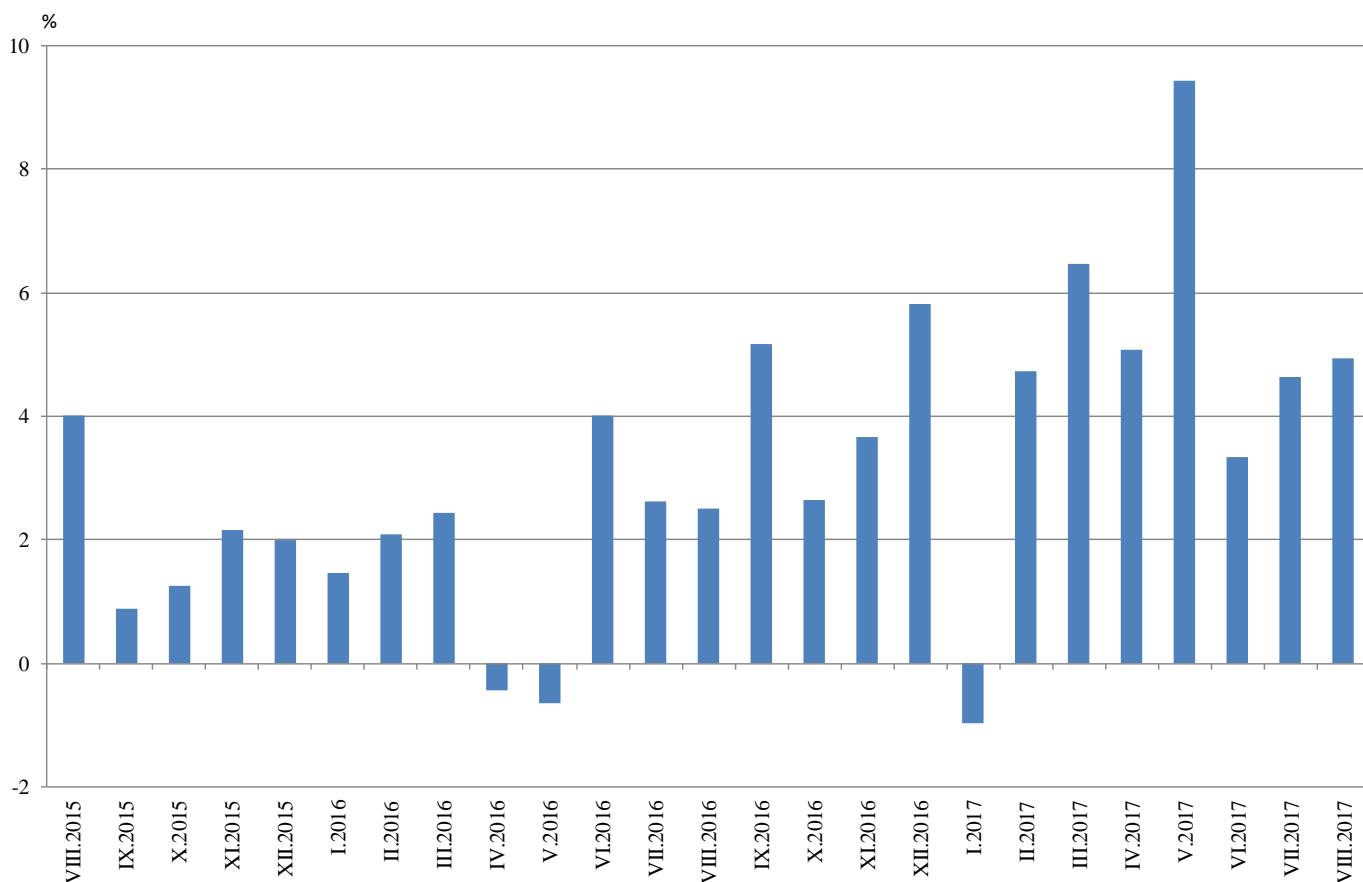


Annual comparisons

On annual basis in August 2017 Industrial Production Index calculated from working day adjusted data rose in mining and quarrying industry by 12.9% and in the manufacturing by 6.4%, while the production went down in the electricity, gas, steam and air conditioning supply by 3.8%.

In the manufacturing, the more considerable increases compared to the same month of the previous year were registered in the manufacture of computer, electronic and optical products by 29.0%, in the manufacture of machinery and equipment by 26.8%, in the manufacture of basic pharmaceutical products and pharmaceutical preparations by 21.5%, in the manufacture of fabricated metal products, except machinery and equipment by 18.0%. Decreases were seen in the manufacture of other transport equipment by 15.6%, in the manufacture of beverages by 13.0%, in the manufacture of wood and of products of wood and cork, except furniture; manufacture of articles of straw and plaiting materials by 10.1%, in the manufacture of food products by 4.3%.

Figure 3. Changes of Industrial Production Indices compared to the same month of the previous year (Working day adjusted)



Annex

Table 1
Changes of Industrial Production Indices compared to the previous month^{1,2}
(Per cent)

Economic activities	NACE.BG - 2008	2017					
		III	IV	V	VI	VII	VIII
Industry	B_TO_E36	0.9	-0.7	2.5	-1.7	0.5	0.4
Mining and quarrying	B	-5.9	-2.9	4.0	0.7	0.2	4.0
Mining of coal and lignite	B05	-8.1	-3.1	11.0	-4.5	-7.0	0.6
Extraction of crude petroleum and natural gas	B06
Mining of metal ores	B07	0.7	-6.8	-1.8	11.2	3.0	4.7
Other mining and quarrying	B08	-11.8	-0.1	-0.5	6.2	-10.8	1.7
Mining support service activities	B09
Manufacturing	C	2.6	-1.2	2.3	-2.5	0.6	0.4
Manufacture of food products	C10	-1.3	-3.9	6.4	4.7	-3.2	-4.3
Manufacture of beverages	C11	0.0	-4.0	0.7	-3.4	4.1	-6.2
Manufacture of tobacco products	C12	-0.5	5.2	5.0	-10.9	-20.3	28.3
Manufacture of textiles	C13	-5.2	2.3	0.5	-2.8	-2.0	1.2
Manufacture of wearing apparel	C14	2.7	-6.8	2.1	-0.1	-4.5	-0.4
Manufacture of leather and related products	C15	9.2	-4.3	5.6	-5.6	-13.0	0.9
Manufacture of wood and of products of wood and cork, except furniture; manufacture of articles of straw and plaiting materials	C16	-8.1	3.2	-0.2	-4.4	-5.4	-3.0
Manufacture of paper and paper products	C17	-1.7	-5.3	6.1	-3.3	-2.3	3.9
Printing and reproduction of recorded media	C18	5.9	-8.3	5.4	-2.7	2.2	-4.6
Manufacture of coke and refined petroleum products	C19
Manufacture of chemicals and chemical products	C20	-3.6	5.3	-2.4	-4.6	12.0	6.2
Manufacture of basic pharmaceutical products and pharmaceutical preparations	C21	4.1	-10.1	15.0	6.1	-1.4	-1.5
Manufacture of rubber and plastic products	C22	4.7	-4.0	2.6	-2.3	-2.4	5.5
Manufacture of other non-metallic mineral products	C23	0.4	0.1	-1.0	-2.3	1.9	2.1
Manufacture of basic metals	C24	2.5	-4.6	3.1	-2.6	-6.3	-0.1
Manufacture of fabricated metal products, except machinery and equipment	C25	4.8	17.7	-11.7	-7.1	19.4	-9.9
Manufacture of computer, electronic and optical products	C26	13.2	-6.6	-7.7	9.6	-2.3	7.6
Manufacture of electrical equipment	C27	2.8	-3.5	7.7	-0.4	-4.4	0.9
Manufacture of machinery and equipment n.e.c.	C28	1.1	2.1	11.0	-10.0	3.0	6.7
Manufacture of motor vehicles, trailers and semi-trailers	C29	2.8	-4.7	3.3	-5.2	4.7	-1.6
Manufacture of other transport equipment	C30	-2.8	-4.6	9.8	5.9	-8.5	-0.5
Manufacture of furniture	C31	4.8	-0.1	1.6	-4.3	-3.4	-0.6
Other manufacturing	C32	-5.4	3.8	-9.0	3.6	-7.6	12.0
Repair and installation of machinery and equipment	C33	-0.9	3.5	12.9	-11.8	22.9	-21.7
Electricity, gas, steam and air conditioning supply	D	-5.8	3.8	2.0	0.1	-1.0	-0.7
Electricity, gas, steam and air conditioning supply	D35	-5.8	3.8	2.0	0.1	-1.0	-0.7

¹ Seasonally adjusted.

² ‘.’ - Confidential data.

Table 2

Changes of Industrial Production Indices compared to the same month of the previous year^{1,2}
(Per cent)

Economic activities	NACE.BG - 2008	2017					
		III	IV	V	VI	VII	VIII
Industry	B_TO_E36	6.5	5.1	9.4	3.3	4.6	4.9
Mining and quarrying	B	4.2	-2.0	6.2	7.8	3.9	12.9
Mining of coal and lignite	B05	35.8	18.8	25.6	29.8	7.2	14.5
Extraction of crude petroleum and natural gas	B06
Mining of metal ores	B07	-1.6	-7.4	0.4	1.4	5.1	17.8
Other mining and quarrying	B08	-17.3	-13.0	-12.5	-2.7	-17.7	-18.0
Mining support service activities	B09
Manufacturing	C	10.3	8.6	13.7	4.7	6.4	6.4
Manufacture of food products	C10	3.0	-1.2	2.7	8.6	3.7	-4.3
Manufacture of beverages	C11	0.5	-9.2	2.7	-8.9	-6.9	-13.0
Manufacture of tobacco products	C12	-3.1	35.2	60.1	20.6	-26.4	8.6
Manufacture of textiles	C13	-5.2	0.2	-5.5	-1.7	-0.8	1.7
Manufacture of wearing apparel	C14	7.3	-6.0	-2.7	-2.5	-10.5	-4.2
Manufacture of leather and related products	C15	5.7	-4.9	10.2	3.4	-15.1	-2.3
Manufacture of wood and of products of wood and cork, except furniture; manufacture of articles of straw and plaiting materials	C16	-10.3	1.7	1.1	-2.1	-4.7	-10.1
Manufacture of paper and paper products	C17	1.8	-4.4	2.5	-4.5	-5.3	-3.2
Printing and reproduction of recorded media	C18	5.0	0.6	9.1	1.1	3.2	-1.5
Manufacture of coke and refined petroleum products	C19
Manufacture of chemicals and chemical products	C20	17.6	22.1	12.8	12.0	8.9	15.6
Manufacture of basic pharmaceutical products and pharmaceutical preparations	C21	2.5	-7.4	13.8	16.4	19.5	21.5
Manufacture of rubber and plastic products	C22	14.1	8.9	14.8	7.0	4.2	11.1
Manufacture of other non-metallic mineral products	C23	4.0	2.8	9.4	1.1	6.2	7.4
Manufacture of basic metals	C24	52.5	8.9	41.8	46.3	-4.4	7.2
Manufacture of fabricated metal products, except machinery and equipment	C25	15.6	43.0	38.4	-8.4	37.4	18.0
Manufacture of computer, electronic and optical products	C26	43.5	30.9	13.4	26.0	18.6	29.0
Manufacture of electrical equipment	C27	-0.1	-1.4	9.4	4.0	-1.5	0.9
Manufacture of machinery and equipment n.e.c.	C28	12.5	21.4	35.3	11.6	12.3	26.8
Manufacture of motor vehicles, trailers and semi-trailers	C29	8.1	2.5	4.7	-2.3	7.6	1.8
Manufacture of other transport equipment	C30	-16.4	-23.5	2.7	16.8	0.0	-15.6
Manufacture of furniture	C31	1.7	3.9	7.3	6.3	-3.9	-0.6
Other manufacturing	C32	10.1	29.7	3.4	9.5	7.6	9.8
Repair and installation of machinery and equipment	C33	12.3	5.6	14.8	5.2	24.5	3.0
Electricity, gas, steam and air conditioning supply	D	-5.0	-4.0	-5.1	-4.5	-1.4	-3.8
Electricity, gas, steam and air conditioning supply	D35	-5.0	-4.0	-5.1	-4.5	-1.4	-3.8

¹ Working day adjusted.

² ‘.’ - Confidential data.

Table 3

Industrial Production Indices¹
(Seasonally adjusted, 2010 = 100)

NACE.BG - 2008	2016					2017							
	VIII	IX	X	XI	XII	I	II	III	IV	V	VI	VII	VIII
B_TO_E36	112.9	114.2	113.0	114.1	116.0	112.4	116.7	117.8	117.0	119.9	117.8	118.3	118.8
B	99.1	101.2	101.0	104.5	104.0	103.7	109.0	102.6	99.7	103.6	104.4	104.6	108.8
B05	93.1	93.6	106.2	118.0	104.5	101.4	121.6	111.7	108.3	120.2	114.8	106.7	107.4
B06
B07	94.6	105.5	99.3	108.7	105.2	96.8	100.7	101.4	94.6	92.9	103.3	106.4	111.4
B08	108.7	99.7	95.5	100.1	94.0	89.6	106.3	93.7	93.6	93.2	98.9	88.2	89.7
B09
C	118.5	120.3	118.7	120.3	122.8	116.7	124.1	127.3	125.8	128.7	125.5	126.3	126.7
C10	95.7	90.4	91.9	92.1	89.9	88.3	93.8	92.5	88.9	94.6	99.0	95.8	91.7
C11	105.6	104.1	106.1	105.0	102.7	91.0	102.5	102.4	98.3	99.0	95.6	99.6	93.4
C12	73.3	65.0	76.6	78.4	81.0	78.3	79.4	79.0	83.1	87.2	77.7	62.0	79.5
C13	105.4	109.2	109.1	108.9	101.3	98.7	114.6	108.6	111.1	111.7	108.6	106.4	107.7
C14	93.4	100.5	97.1	90.2	94.5	94.0	97.8	100.4	93.6	95.5	95.4	91.2	90.8
C15	64.4	74.9	71.8	75.1	69.8	71.6	70.8	77.3	74.0	78.1	73.7	64.1	64.7
C16	88.3	82.6	86.2	84.4	85.5	88.3	97.0	89.2	92.0	91.9	87.8	83.1	80.6
C17	132.4	129.0	129.5	138.8	129.0	131.3	132.0	129.8	122.9	130.5	126.1	123.2	128.0
C18	116.0	115.8	120.4	122.0	114.1	117.7	119.1	126.2	115.7	122.0	118.7	121.4	115.8
C19
C20	122.4	118.5	125.0	117.9	111.7	114.2	125.6	121.1	127.6	124.5	118.8	133.1	141.3
C21	138.1	140.7	145.9	148.7	141.4	151.8	145.5	151.5	136.3	156.8	166.4	164.1	161.7
C22	145.5	143.2	147.5	154.1	148.0	148.9	154.9	162.2	155.6	159.7	156.0	152.3	160.6
C23	122.8	119.3	122.0	120.4	121.4	117.0	128.8	129.3	129.4	128.2	125.3	127.7	130.3
C24	96.5	100.5	103.4	105.7	108.1	105.5	113.0	115.9	110.5	114.0	111.1	104.0	103.9
C25	155.8	181.7	148.7	168.4	190.3	124.8	169.2	177.4	208.8	184.5	171.3	204.6	184.4
C26	157.7	159.4	175.8	171.7	158.7	196.2	179.3	203.1	189.6	174.9	191.6	187.2	201.5
C27	146.6	148.0	146.4	148.1	144.6	142.9	145.0	149.0	143.8	154.9	154.3	147.5	148.9
C28	142.8	139.1	145.5	156.2	158.0	146.9	157.9	159.7	163.0	180.9	162.8	167.6	178.9
C29	174.4	169.4	174.6	176.5	179.5	181.4	180.9	185.9	177.2	183.1	173.6	181.8	178.8
C30	99.9	87.3	80.9	81.3	83.1	98.8	86.3	83.9	80.1	87.9	93.1	85.1	84.7
C31	126.9	131.8	133.6	138.6	130.4	122.3	130.6	136.9	136.8	139.0	133.0	128.5	127.7
C32	214.8	222.1	211.6	230.6	237.7	268.8	245.6	232.2	241.0	219.3	227.2	210.0	235.3
C33	80.8	95.1	85.6	84.3	89.0	78.5	86.1	85.4	88.3	99.7	87.9	108.1	84.6
D	104.3	102.6	102.1	100.7	102.5	111.4	102.8	96.9	100.5	102.6	102.7	101.7	101.0
D35	104.3	102.6	102.1	100.7	102.5	111.4	102.8	96.9	100.5	102.6	102.7	101.7	101.0

¹ '..' - Confidential data.



Table 4

Industrial Production Indices¹
(Working day adjusted, 2010 = 100)

NACE.BG - 2008	2014	2015	2016					2017							
	VIII	VIII	VIII	IX	X	XI	XII	I	II	III	IV	V	VI	VII	VIII
B_TO_E36	102.4	106.6	109.2	114.1	117.7	122.4	122.5	106.8	111.1	119.9	113.0	114.3	119.7	122.0	114.6
B	96.2	96.0	95.7	104.6	111.7	117.1	114.4	99.2	105.2	98.8	92.0	96.1	99.9	102.7	108.0
B05	93.9	120.6	90.1	100.8	131.1	135.9	127.0	116.6	123.3	97.9	90.0	103.2	91.3	97.8	103.2
B06
B07	94.9	81.6	94.6	105.5	99.3	108.7	105.2	96.8	100.7	101.4	94.6	92.9	103.3	106.4	111.4
B08	125.9	123.2	122.6	109.5	112.6	112.2	97.1	52.1	79.5	83.7	92.4	96.6	110.5	99.8	100.6
B09
C	107.1	111.3	115.6	123.3	126.4	129.0	122.9	100.1	112.8	129.2	124.7	127.9	133.5	134.8	123.0
C10	92.4	89.8	98.9	97.5	101.4	99.0	94.0	74.0	81.2	90.8	85.3	92.6	101.9	97.3	94.6
C11	122.8	127.9	135.5	112.4	93.4	94.9	106.6	54.9	71.8	96.8	101.4	105.9	115.3	128.0	117.8
C12	104.3	91.5	72.3	65.6	75.2	79.3	89.8	60.6	63.3	85.5	77.0	87.3	83.4	72.1	78.5
C13	89.1	86.4	84.0	105.1	113.0	113.6	87.7	82.8	112.4	121.3	122.8	128.4	120.8	110.9	85.5
C14	102.3	92.8	91.0	98.9	99.6	87.3	95.1	98.0	95.1	96.8	85.4	86.7	105.0	105.4	87.1
C15	82.1	81.0	63.7	83.3	74.7	77.4	64.2	73.2	68.2	77.5	65.3	65.5	76.3	75.8	62.3
C16	101.7	98.9	90.3	87.9	97.7	93.9	79.6	67.7	83.5	87.8	90.4	91.2	96.2	91.7	81.2
C17	117.5	118.9	131.0	129.9	129.8	138.7	121.7	122.9	125.4	135.4	124.1	133.9	132.9	127.3	126.8
C18	93.3	106.8	109.3	116.0	129.0	140.0	126.5	103.5	109.9	127.4	110.3	117.3	119.5	120.6	107.6
C19
C20	99.1	117.1	117.0	119.1	125.1	121.5	108.9	105.5	117.9	131.5	131.9	124.7	122.9	135.4	135.3
C21	108.6	127.4	118.0	137.0	158.1	155.8	144.7	142.6	148.8	164.9	135.5	153.5	178.1	158.0	143.4
C22	126.0	127.2	143.1	148.1	161.5	159.6	127.3	131.0	143.1	166.9	157.5	161.0	168.4	160.8	158.9
C23	123.1	135.3	130.8	129.4	136.4	132.5	109.2	77.1	104.4	129.9	133.6	140.1	136.2	138.6	140.5
C24	100.2	91.4	89.6	91.5	115.8	112.8	90.9	102.3	107.4	125.9	109.8	113.3	116.7	109.5	96.1
C25	110.6	125.7	150.9	189.3	152.3	185.1	221.2	97.2	149.6	176.5	207.1	174.9	182.1	213.9	178.0
C26	110.9	130.6	137.2	158.0	183.9	182.8	171.4	181.5	165.0	214.5	187.6	173.0	201.9	190.9	177.0
C27	104.7	128.9	130.0	148.6	160.5	162.0	129.0	130.0	141.3	160.4	138.6	152.6	164.3	156.1	131.2
C28	124.9	127.5	128.4	138.5	149.4	167.9	152.2	128.9	153.3	171.7	163.3	182.1	176.1	177.5	162.7
C29	108.2	122.1	146.1	169.7	187.8	189.3	161.3	177.7	180.2	201.3	177.0	185.7	177.5	181.4	148.7
C30	50.9	83.1	85.5	78.2	75.3	73.6	85.0	81.1	78.2	94.4	84.3	103.6	100.3	84.2	72.2
C31	136.4	121.2	127.3	139.1	148.9	155.3	131.9	102.9	115.4	135.3	134.0	135.9	134.4	131.6	126.5
C32	156.7	186.6	220.0	233.1	242.5	242.4	205.0	237.5	211.0	235.4	232.3	216.5	256.9	207.2	241.6
C33	89.6	86.1	79.6	100.0	92.2	99.4	121.0	55.5	72.1	82.9	78.3	94.7	87.9	111.9	82.0
D	90.4	96.0	95.1	90.4	96.1	108.6	128.9	134.8	112.9	105.0	90.2	83.1	88.4	93.5	91.5
D35	90.4	96.0	95.1	90.4	96.1	108.6	128.9	134.8	112.9	105.0	90.2	83.1	88.4	93.5	91.5