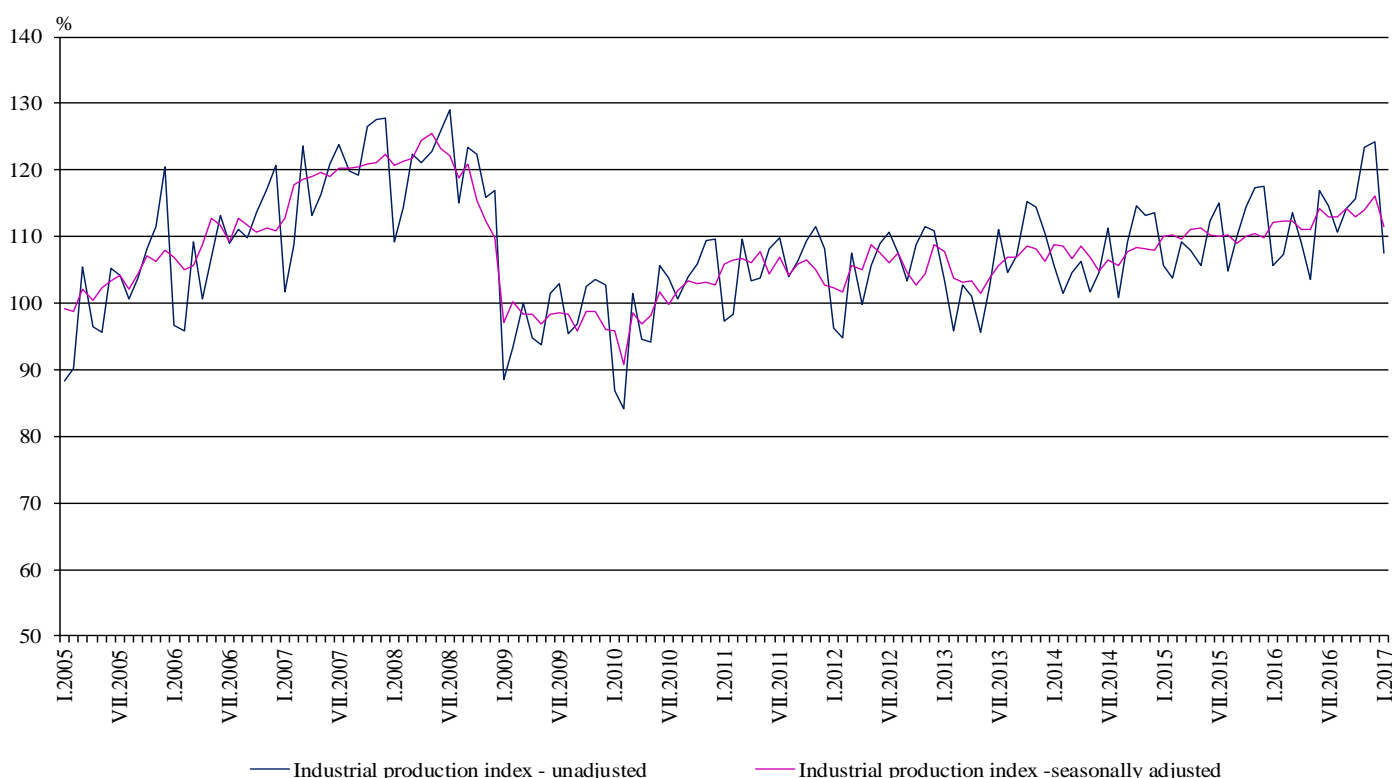


INDUSTRIAL PRODUCTION INDICES IN JANUARY 2017¹

According to the preliminary data the Industrial Production Index², seasonally adjusted³, decreased by 3.9% in January 2017 as compared to December 2016.

In January 2017 working day adjusted⁴ Industrial Production Index fell by 1.2% in comparison with the same month of 2016.

Figure 1. Industrial Production Indices (2010 = 100)



¹ January 2017 data are preliminary.

² Monthly Industrial Production and Industrial turnover indices measure changes in production and turnover values of industrial enterprises. This information can be used to assess the current economic development and for short-term forecasts. Indices do not measure the actual production level, it aims to measure the average change in value of production between two points of time. Indices are compiled on the basis of information collected through representative sampling survey on industrial enterprises. The sample covers enterprises with annual turnover more than 97% of total turnover in industry.

Industrial production indices are calculated at constant base year that is to say they are weighted with the structure of the value added at factor costs in the base year.

³ Seasonal adjustment is a statistical method, which eliminates the seasonal component of time series.

⁴ Working day adjustment is an adjustment for variations caused by calendar effects, different number of calendar and working days in the months, national holidays and outliers (for example the presence of more non-working days in May could contribute to the decline in the production in some activities).

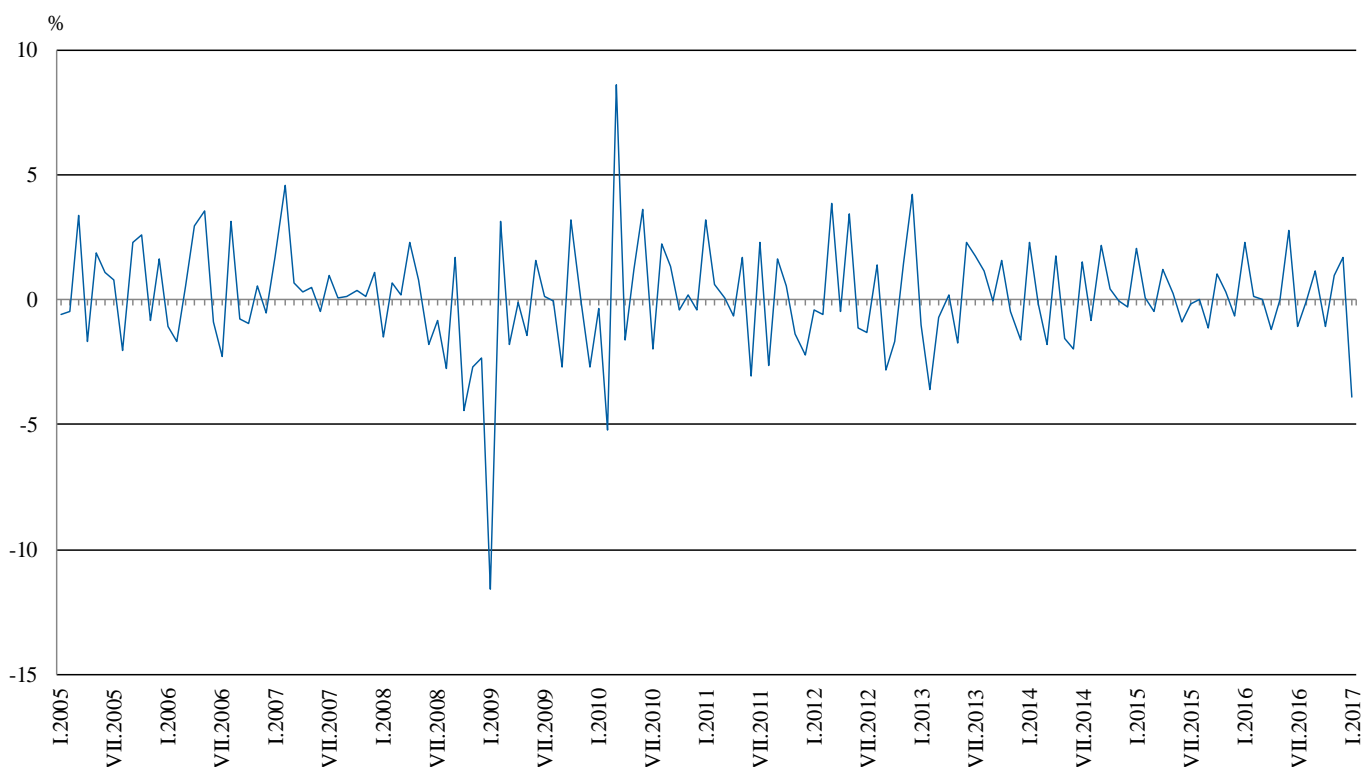


Monthly comparisons

In January 2017 as compared to December 2016, the seasonally adjusted Industrial Production Index decreased in the manufacturing by 5.8% and in the mining and quarrying industry by 1.0%, while in the electricity, gas, steam and air conditioning supply an increase by 9.0% was seen.

The most significant decreases of production in the manufacturing were registered in the manufacture of fabricated metal products, except machinery and equipment by 37.2%, in the manufacture of beverages and in the repair and installation of machinery and equipment by 12.0%, in the manufacture of machinery and equipment by 7.9%, in the manufacture of other non-metallic mineral products and in the manufacture of furniture by 5.8%. There were increases in the manufacture of computer, electronic and optical products by 23.4%, in the manufacture of other transport equipment by 18.8%, in the manufacture of basic pharmaceutical products and pharmaceutical preparations by 7.3%.

**Figure 2. Changes of Industrial Production Indices compared to the previous month
(Seasonally adjusted)**



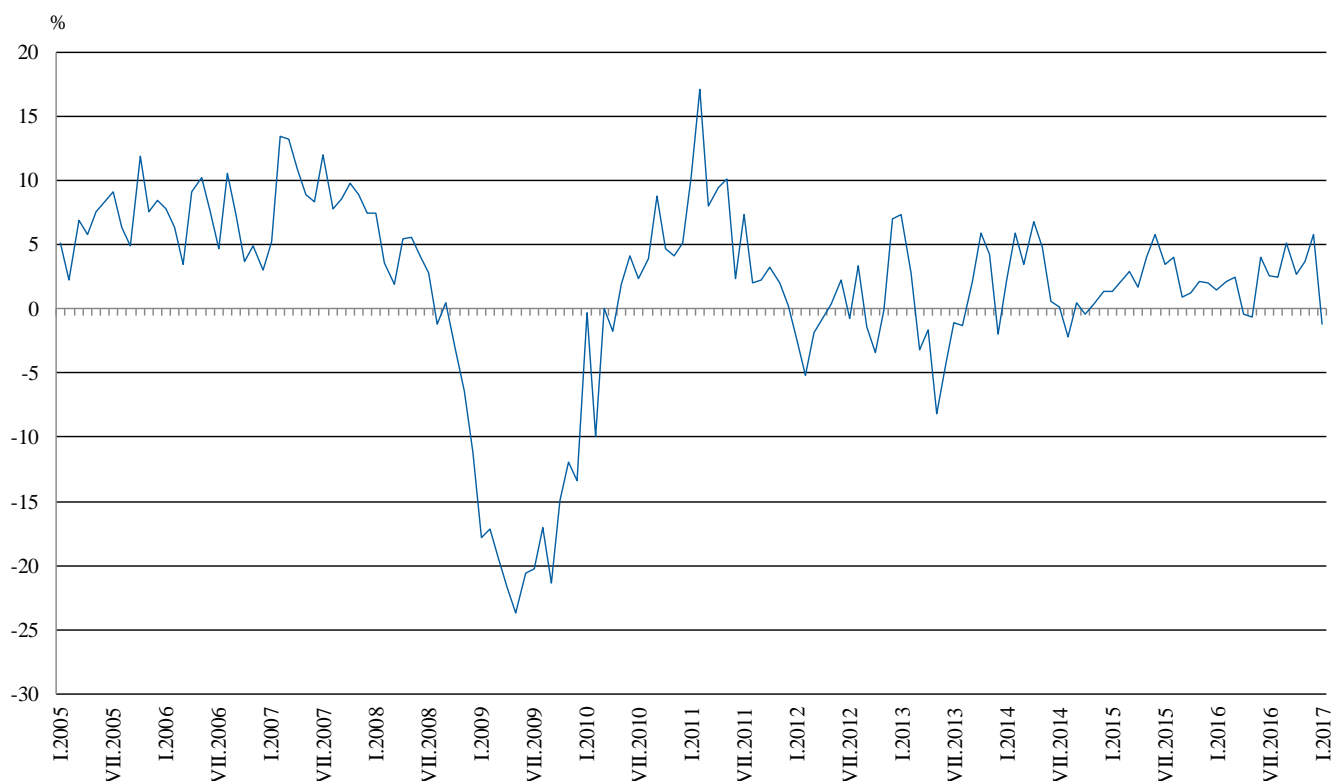


Annual comparisons

On annual basis in January 2017 Industrial Production Index calculated from working day adjusted data decreased in the manufacturing by 3.7% and in the mining and quarrying industry by 2.8%, while in the electricity, gas, steam and air conditioning supply an increase by 6.9% was seen.

In the manufacturing, the more significant decreases compared to the same month of the previous year were seen in the manufacture of fabricated metal products, except machinery and equipment by 32.1%, in the manufacture of tobacco products by 27.2%, in the manufacture of wood and of products of wood and cork, except furniture; manufacture of articles of straw and plaiting materials by 19.4%, in the manufacture of beverages by 17.5%. Increases were registered in the manufacture of other transport equipment by 13.5%, in the manufacture of motor vehicles, trailers and semi-trailers by 13.0%, in the in the manufacture of paper and paper products by 11.6%, in the manufacture of basic metals by 10.5%.

Figure 3. Changes of Industrial Production Indices compared to the same month of the previous year (Working day adjusted)



The final data on Industrial Production and Turnover Indices for December 2016 can be found on the NSI website: <http://www.nsi.bg/en>.

Annex

Table 1
Changes of Industrial Production Indices compared to the previous month^{1,2}
(Per cent)

Economic activities	NACE.BG - 2008	2016					2017
		VIII	IX	X	XI	XII	I
Industry	B_TO_E36	0.0	1.2	-1.1	1.0	1.7	-3.9
Mining and quarrying	B	-1.0	2.0	-0.2	3.5	-0.5	-1.0
Mining of coal and lignite	B05	-6.5	0.5	13.5	11.1	-11.5	-3.9
Extraction of crude petroleum and natural gas	B06
Mining of metal ores	B07	-6.5	11.5	-5.9	9.5	-3.2	-8.1
Other mining and quarrying	B08	2.7	-8.3	-4.2	4.9	-6.1	-2.6
Mining support service activities	B09
Manufacturing	C	0.0	1.5	-1.4	1.4	2.1	-5.8
Manufacture of food products	C10	3.5	-5.6	1.6	0.3	-2.4	-1.4
Manufacture of beverages	C11	-2.8	-1.4	2.0	-1.1	-2.2	-12.0
Manufacture of tobacco products	C12	-7.5	-11.3	17.8	2.3	3.3	-1.6
Manufacture of textiles	C13	-1.2	3.6	-0.1	-0.1	-7.0	-4.6
Manufacture of wearing apparel	C14	-7.1	7.6	-3.4	-7.1	4.7	-0.7
Manufacture of leather and related products	C15	-12.0	16.2	-4.2	4.6	-7.1	1.6
Manufacture of wood and of products of wood and cork, except furniture; manufacture of articles of straw and plaiting materials	C16	1.8	-6.4	4.3	-2.1	1.3	-3.8
Manufacture of paper and paper products	C17	2.3	-2.5	0.4	7.1	-7.0	1.8
Printing and reproduction of recorded media	C18	-1.8	-0.2	3.9	1.3	-6.4	3.0
Manufacture of coke and refined petroleum products	C19
Manufacture of chemicals and chemical products	C20	0.2	-3.2	5.5	-5.6	-5.3	1.5
Manufacture of basic pharmaceutical products and pharmaceutical preparations	C21	-2.6	1.9	3.7	1.9	-4.9	7.3
Manufacture of rubber and plastic products	C22	2.2	-1.5	3.0	4.4	-3.9	1.4
Manufacture of other non-metallic mineral products	C23	2.5	-2.9	2.3	-1.3	0.8	-5.8
Manufacture of basic metals	C24	4.4	4.1	3.0	2.2	2.3	-3.4
Manufacture of fabricated metal products, except machinery and equipment	C25	3.1	16.6	-18.2	13.3	13.0	-37.2
Manufacture of computer, electronic and optical products	C26	0.5	1.1	10.3	-2.3	-7.6	23.4
Manufacture of electrical equipment	C27	-1.3	1.0	-1.1	1.1	-2.3	-1.2
Manufacture of machinery and equipment n.e.c.	C28	-3.9	-2.6	4.6	7.3	1.1	-7.9
Manufacture of motor vehicles, trailers and semi-trailers	C29	3.1	-2.9	3.1	1.1	1.7	0.8
Manufacture of other transport equipment	C30	18.0	-12.7	-7.4	0.5	2.3	18.8
Manufacture of furniture	C31	-4.2	3.9	1.4	3.7	-5.9	-5.8
Other manufacturing	C32	12.3	3.4	-4.7	9.0	3.1	13.0
Repair and installation of machinery and equipment	C33	-9.8	17.7	-10.0	-1.6	5.6	-12.0
Electricity, gas, steam and air conditioning supply	D	1.2	-1.7	-0.4	-1.4	1.8	9.0
Electricity, gas, steam and air conditioning supply	D35	1.2	-1.7	-0.4	-1.4	1.8	9.0

¹ Seasonally adjusted.

² ".." - Confidential data.



Table 2

Changes of Industrial Production Indices compared to the same month of the previous year^{1,2}
(Per cent)

Economic activities	NACE.BG - 2008	2016					2017
		VIII	IX	X	XI	XII	I
Industry	B_TO_E36	2.5	5.2	2.6	3.7	5.8	-1.2
Mining and quarrying	B	-0.3	0.5	10.1	7.8	5.3	-2.8
Mining of coal and lignite	B05	-25.3	-24.3	11.6	15.6	-7.8	-8.3
Extraction of crude petroleum and natural gas	B06
Mining of metal ores	B07	16.0	21.8	12.1	10.9	22.9	0.9
Other mining and quarrying	B08	-0.5	-10.4	-20.9	-7.9	-27.1	-8.2
Mining support service activities	B09
Manufacturing	C	3.9	7.2	2.3	4.1	7.8	-3.7
Manufacture of food products	C10	10.2	3.2	1.2	2.6	1.2	-5.4
Manufacture of beverages	C11	5.9	7.1	8.6	6.5	6.8	-17.5
Manufacture of tobacco products	C12	-21.0	-24.4	-17.5	-19.3	-16.2	-27.2
Manufacture of textiles	C13	-2.7	1.7	-5.6	-0.3	-6.3	-15.7
Manufacture of wearing apparel	C14	-1.9	7.9	-4.1	-11.1	-4.9	-6.9
Manufacture of leather and related products	C15	-21.4	-2.5	-2.9	7.8	-5.0	-5.3
Manufacture of wood and of products of wood and cork, except furniture; manufacture of articles of straw and plaiting materials	C16	-8.7	-14.2	-9.4	-16.6	-19.1	-19.4
Manufacture of paper and paper products	C17	10.2	-2.9	-5.9	2.9	3.4	11.6
Printing and reproduction of recorded media	C18	2.3	3.1	4.8	-6.0	-2.3	-8.1
Manufacture of coke and refined petroleum products	C19
Manufacture of chemicals and chemical products	C20	-0.1	6.6	10.0	17.1	12.8	9.7
Manufacture of basic pharmaceutical products and pharmaceutical preparations	C21	-7.4	-4.8	-1.3	0.4	-6.3	4.4
Manufacture of rubber and plastic products	C22	12.5	6.3	7.5	16.0	10.3	9.8
Manufacture of other non-metallic mineral products	C23	-3.3	-7.3	-3.7	-7.4	-11.2	-14.6
Manufacture of basic metals	C24	-1.9	18.4	12.1	15.3	27.2	10.5
Manufacture of fabricated metal products, except machinery and equipment	C25	20.0	44.3	5.6	11.5	34.4	-32.1
Manufacture of computer, electronic and optical products	C26	5.1	15.1	15.9	18.7	15.3	28.5
Manufacture of electrical equipment	C27	0.8	3.1	-1.2	0.1	-1.3	-2.6
Manufacture of machinery and equipment n.e.c.	C28	0.7	-1.3	3.9	17.2	17.9	1.4
Manufacture of motor vehicles, trailers and semi-trailers	C29	19.7	3.0	7.4	8.7	17.3	13.0
Manufacture of other transport equipment	C30	2.8	-18.0	-25.7	-24.7	-16.5	13.5
Manufacture of furniture	C31	5.0	-0.1	6.7	9.7	4.1	-9.6
Other manufacturing	C32	17.9	30.3	14.8	23.2	16.6	24.4
Repair and installation of machinery and equipment	C33	-7.5	23.5	-7.4	-13.3	9.6	-16.4
Electricity, gas, steam and air conditioning supply	D	-0.9	0.2	0.7	0.4	-0.1	6.9
Electricity, gas, steam and air conditioning supply	D35	-0.9	0.2	0.7	0.4	-0.1	6.9

¹ Working day adjusted.

² ".." - Confidential data.



Table 3

Industrial Production Indices¹
(Seasonally adjusted, 2010 = 100)

NACE.BG - 2008	2016												2017
	I	II	III	IV	V	VI	VII	VIII	IX	X	XI	XII	I
B_TO_E36	112.2	112.4	112.4	111.0	111.1	114.1	112.9	112.9	114.2	113.0	114.1	116.0	111.5
B	103.1	98.2	98.9	99.0	97.9	98.2	100.1	99.1	101.2	101.0	104.5	104.0	102.9
B05	110.9	100.6	86.6	93.2	100.5	95.1	99.6	93.1	93.6	106.2	118.0	104.5	100.4
B06
B07	95.8	80.4	103.1	102.1	92.6	101.9	101.2	94.6	105.5	99.3	108.7	105.2	96.7
B08	99.4	111.2	112.9	107.5	105.6	103.3	105.9	108.7	99.7	95.5	100.1	94.0	91.6
B09
C	119.2	118.3	118.4	115.5	115.4	119.7	118.5	118.5	120.3	118.7	120.3	122.8	115.7
C10	93.8	91.7	90.0	89.8	92.2	91.5	92.5	95.7	90.4	91.9	92.1	89.9	88.7
C11	108.1	107.2	103.3	108.0	96.0	103.2	108.6	105.6	104.1	106.1	105.0	102.7	90.3
C12	103.5	91.6	80.7	62.8	56.9	63.8	79.3	73.3	65.0	76.6	78.4	81.0	79.7
C13	114.2	119.1	115.2	111.8	119.5	110.7	106.6	105.4	109.2	109.1	108.9	101.3	96.6
C14	100.7	98.1	96.9	97.9	98.2	99.1	100.6	93.4	100.5	97.1	90.2	94.5	93.8
C15	74.9	74.7	74.8	77.9	72.3	72.1	73.2	64.4	74.9	71.8	75.1	69.8	70.9
C16	97.0	102.5	99.3	90.9	91.3	89.8	86.8	88.3	82.6	86.2	84.4	85.5	82.3
C17	118.4	126.8	127.7	127.1	127.6	132.1	129.4	132.4	129.0	129.5	138.8	129.0	131.4
C18	128.0	127.4	122.4	113.4	112.4	116.7	118.2	116.0	115.8	120.4	122.0	114.1	117.5
C19
C20	103.3	114.3	102.9	104.8	110.5	105.7	122.1	122.4	118.5	125.0	117.9	111.7	113.3
C21	146.8	155.9	151.6	140.5	140.6	147.0	141.7	138.1	140.7	145.9	148.7	141.4	151.7
C22	138.2	144.1	145.4	142.2	140.3	145.5	142.3	145.5	143.2	147.5	154.1	148.0	150.1
C23	130.0	127.4	126.9	125.7	120.8	123.5	119.9	122.8	119.3	122.0	120.4	121.4	114.3
C24	89.3	87.8	87.5	86.8	84.1	86.5	92.4	96.5	100.5	103.4	105.7	108.1	104.4
C25	176.0	147.9	152.4	149.6	134.0	184.0	151.2	155.8	181.7	148.7	168.4	190.3	119.5
C26	153.3	141.0	145.0	146.2	151.9	152.8	156.9	157.7	159.4	175.8	171.7	158.7	195.8
C27	145.1	151.5	151.4	142.2	145.0	151.5	148.6	146.6	148.0	146.4	148.1	144.6	142.9
C28	143.3	141.4	143.1	133.9	137.9	145.2	148.6	142.8	139.1	145.5	156.2	158.0	145.5
C29	160.6	169.9	174.5	169.3	177.4	173.3	169.2	174.4	169.4	174.6	176.5	179.5	181.0
C30	88.3	94.9	99.4	101.3	85.9	82.3	84.7	99.9	87.3	80.9	81.3	83.1	98.7
C31	135.5	131.1	136.1	132.3	131.0	125.0	132.5	126.9	131.8	133.6	138.6	130.4	122.9
C32	216.9	197.1	208.9	186.1	209.0	206.8	191.2	214.8	222.1	211.6	230.6	237.7	268.6
C33	93.6	78.0	75.9	83.5	88.9	82.7	89.6	80.8	95.1	85.6	84.3	89.0	78.3
D	103.1	99.9	100.8	103.3	106.2	106.7	103.1	104.3	102.6	102.1	100.7	102.5	111.8
D35	103.1	99.9	100.8	103.3	106.2	106.7	103.1	104.3	102.6	102.1	100.7	102.5	111.8

¹ ".." - Confidential data.



Table 4

Industrial Production Indices¹
(Working day adjusted, 2010 = 100)

NACE.BG - 2008	2014	2015	2016												2017
	I	I	I	II	III	IV	V	VI	VII	VIII	IX	X	XI	XII	I
B_TO_E36	104.8	106.3	107.8	106.1	112.6	107.5	104.4	115.9	116.6	109.2	114.1	117.7	122.4	122.5	106.5
B	109.5	98.1	102.1	91.5	94.9	93.9	90.5	92.7	98.8	95.7	104.6	111.7	117.1	114.4	99.3
B05	131.7	132.3	127.1	98.7	72.1	75.8	82.1	70.4	91.2	90.1	100.8	131.1	135.9	127.0	116.5
B06
B07	103.3	84.7	95.8	80.4	103.1	102.1	92.6	101.9	101.2	94.6	105.5	99.3	108.7	105.2	96.7
B08	66.5	68.4	59.0	80.8	101.2	106.3	110.5	113.5	121.3	122.6	109.5	112.6	112.2	97.1	54.2
B09
C	94.1	99.3	103.6	107.3	117.1	114.7	112.5	127.5	126.7	115.6	123.3	126.4	129.0	122.9	99.7
C10	75.5	79.4	78.7	79.2	88.2	86.4	90.2	93.9	93.8	98.9	97.5	101.4	99.0	94.0	74.4
C11	57.9	63.2	66.4	74.2	96.3	111.7	103.1	126.6	137.6	135.5	112.4	93.4	94.9	106.6	54.8
C12	86.6	78.6	85.5	75.6	88.2	57.0	54.5	69.1	97.9	72.3	65.6	75.2	79.3	89.8	62.2
C13	93.0	97.1	97.6	113.8	127.9	122.5	135.9	122.9	111.8	84.0	105.1	113.0	113.6	87.7	82.2
C14	105.1	98.1	106.0	95.0	90.2	90.8	89.1	107.7	117.8	91.0	98.9	99.6	87.3	95.1	98.7
C15	79.2	82.4	76.4	72.4	73.3	68.6	59.5	73.7	89.3	63.7	83.3	74.7	77.4	64.2	72.3
C16	89.0	80.1	76.4	87.0	97.9	88.8	90.2	98.3	96.3	90.3	87.9	97.7	93.9	79.6	61.6
C17	116.5	113.3	110.1	119.9	132.9	129.8	130.7	139.1	134.4	131.0	129.9	129.8	138.7	121.7	122.9
C18	93.5	95.9	112.5	117.9	121.3	109.6	107.5	118.1	116.9	109.3	116.0	129.0	140.0	126.5	103.4
C19
C20	86.7	104.8	95.5	106.7	111.8	108.1	110.5	109.7	124.3	117.0	119.1	125.1	121.5	108.9	104.8
C21	124.1	136.8	136.2	160.2	161.0	146.3	134.9	153.0	132.2	118.0	137.0	158.1	155.8	144.7	142.1
C22	102.9	113.9	121.1	132.7	146.3	144.7	140.3	157.4	154.3	143.1	148.1	161.5	159.6	127.3	133.0
C23	78.9	83.4	89.2	99.2	124.9	129.9	128.1	134.7	130.5	130.8	129.4	136.4	132.5	109.2	76.2
C24	112.5	112.5	92.7	82.5	82.5	100.8	79.9	79.8	114.6	89.6	91.5	115.8	112.8	90.9	102.4
C25	85.4	94.7	136.9	131.6	152.6	144.8	126.4	198.8	155.7	150.9	189.3	152.3	185.1	221.2	93.0
C26	124.6	118.0	141.5	129.8	149.4	143.3	152.5	160.2	160.9	137.2	158.0	183.9	182.8	171.4	181.7
C27	117.5	129.8	133.1	149.2	160.5	140.6	139.4	158.0	158.6	130.0	148.6	160.5	162.0	129.0	129.7
C28	128.2	134.7	126.2	136.2	152.7	134.5	134.6	157.8	158.1	128.4	138.5	149.4	167.9	152.2	127.9
C29	132.5	150.2	156.8	170.1	186.1	172.7	177.4	181.6	168.5	146.1	169.7	187.8	189.3	161.3	177.2
C30	53.4	94.0	71.1	86.6	112.9	110.2	100.9	85.9	84.2	85.5	78.2	75.3	73.6	85.0	80.8
C31	105.5	107.3	114.5	116.1	133.1	128.9	126.7	126.5	137.0	127.3	139.1	148.9	155.3	131.9	103.5
C32	123.6	146.7	190.8	168.8	213.8	179.1	209.3	234.6	192.5	220.0	233.1	242.5	242.4	205.0	237.3
C33	58.2	68.7	66.2	65.1	73.8	74.1	82.5	83.6	89.9	79.6	100.0	92.2	99.4	121.0	55.4
D	139.3	134.5	126.0	110.5	110.6	93.9	87.5	92.6	94.8	95.1	90.4	96.1	108.6	128.9	134.8
D35	139.3	134.5	126.0	110.5	110.6	93.9	87.5	92.6	94.8	95.1	90.4	96.1	108.6	128.9	134.8