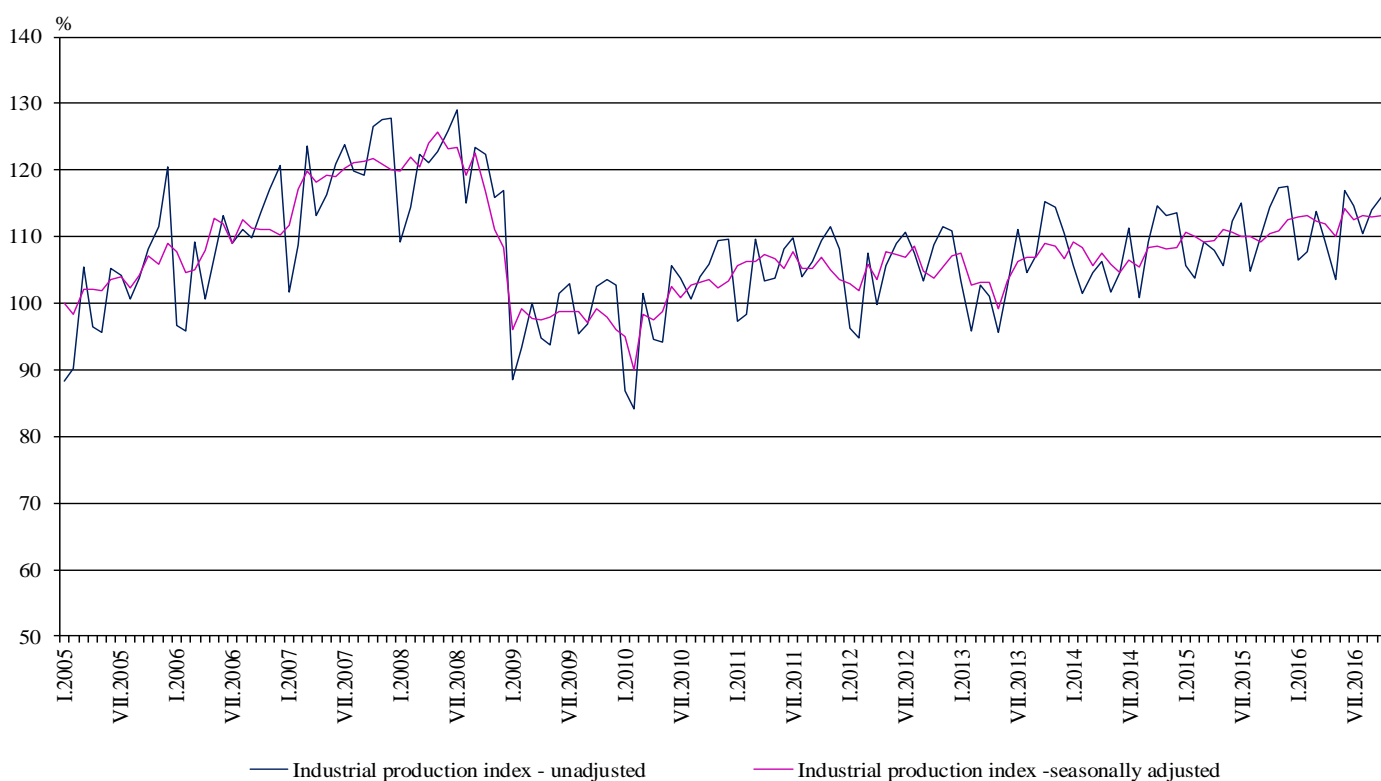


INDUSTRIAL PRODUCTION INDICES IN OCTOBER 2016¹

According to the preliminary data the Industrial Production Index², seasonally adjusted³, increased by 0.3% in October 2016 as compared to September 2016.

In October 2016 working day adjusted⁴ Industrial Production Index rose by 2.8% in comparison with the same month of 2015.

Figure 1. Industrial Production Indices (2010 = 100)



¹ October 2016 data are preliminary.

² Monthly Industrial Production and Industrial turnover indices measure changes in production and turnover values of industrial enterprises. This information can be used to assess the current economic development and for short-term forecasts. Indices do not measure the actual production level, it aims to measure the average change in value of production between two points of time. Indices are compiled on the base of information collected through representative sampling survey on industrial enterprises. The sample covers enterprises with annual turnover more than 97% of total turnover in industry.

Industrial production indices are calculated at constant base year that is to say they are weighted with the structure of the value added at factor costs in the base year.

³ Seasonal adjustment is a statistical method, which eliminates the seasonal component of time series.

⁴ Working day adjustment is an adjustment for variations caused by calendar effects, different number of calendar and working days in the months, national holidays and outliers (for example the presence of more non-working days in May could contribute to the decline in the production in some activities).

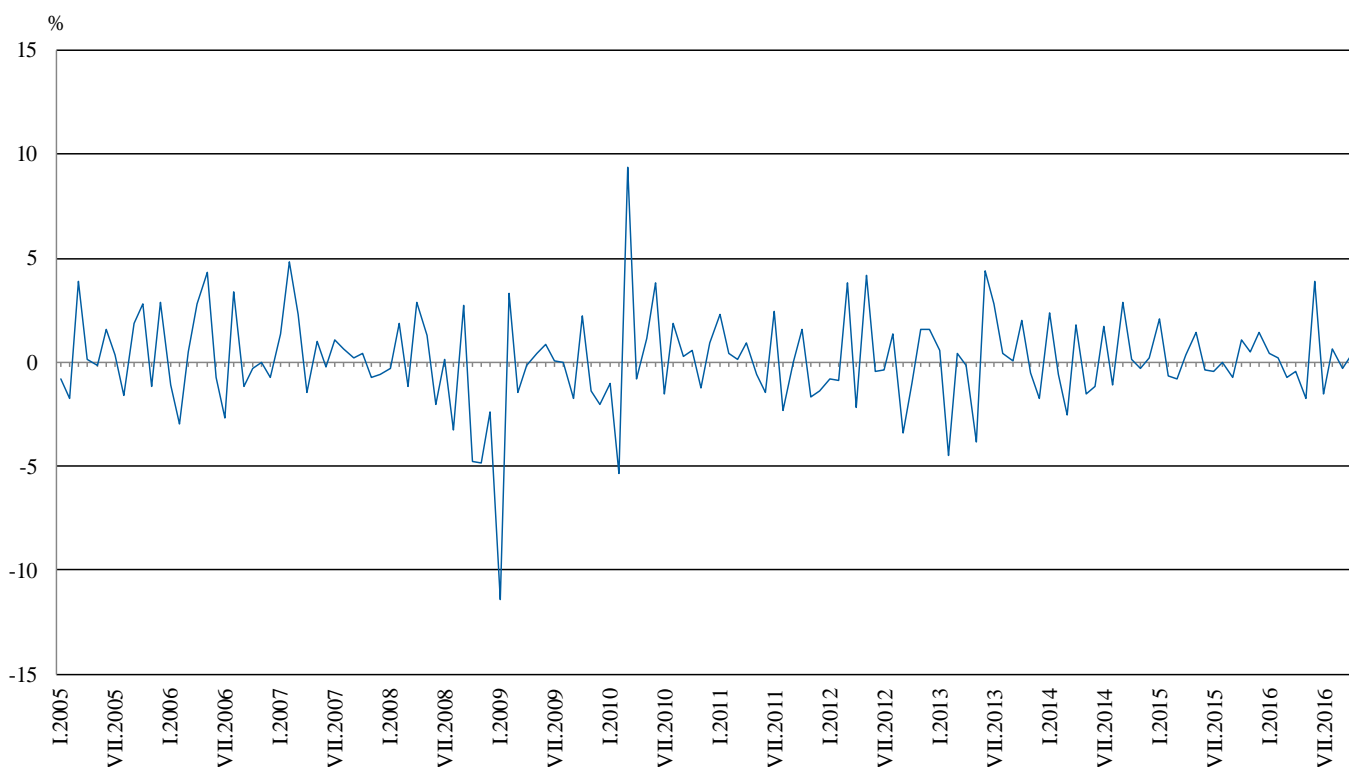


Monthly comparisons

In October 2016 as compared to September 2016, the seasonally adjusted Industrial Production Index increased in the electricity, gas, steam and air conditioning supply by 1.9% and in the mining and quarrying industry by 0.5%, while in the manufacturing a decrease by 0.5% was seen.

The most significant decreases of production in the manufacturing were registered in the manufacture of fabricated metal products, except machinery and equipment by 16.2%, in the repair and installation of machinery and equipment by 10.7%, in the manufacture of other transport equipment by 8.3%, in the manufacture of leather and related products by 5.6%. There were increases in the manufacture of tobacco products by 15.0%, in the manufacture of computer, electronic and optical products by 12.3%, in the manufacture of chemicals and chemical products by 7.3%, in the manufacture of wood and of products of wood and cork, except furniture; manufacture of articles of straw and plaiting materials by 7.2%.

**Figure 2. Changes of Industrial Production Indices compared to the previous month
(Seasonally adjusted)**



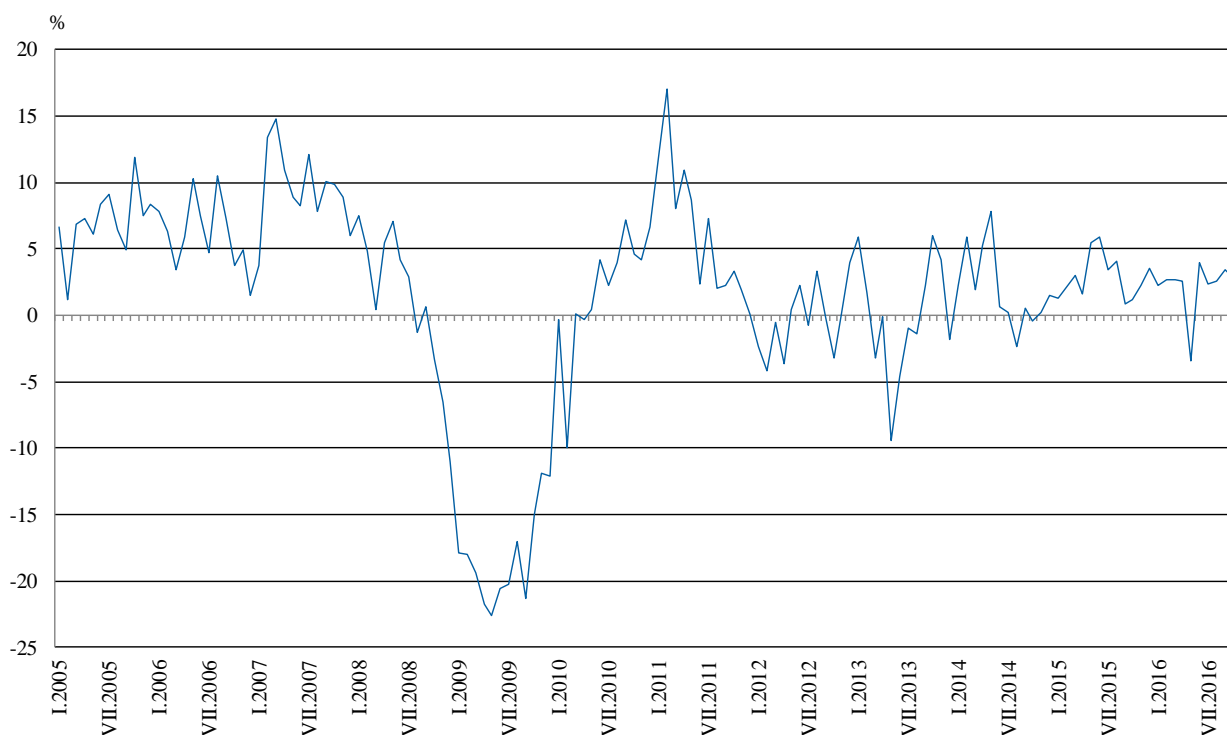


Annual comparisons

On annual basis in October 2016 Industrial Production Index calculated from working day adjusted data increased in the mining and quarrying industry by 8.8%, in the electricity, gas, steam and air conditioning supply by 3.5% and in the manufacturing by 1.7%.

In the manufacturing, the more significant increases compared to the same month of the previous year were seen in the manufacture of computer, electronic and optical products by 15.2%, in the manufacture of basic metals by 13.7%, in the manufacture of chemicals and chemical products by 10.0%, in the manufacture of rubber and plastic products by 9.0%. Decreases were registered in the manufacture of other transport equipment by 27.1%, in the manufacture of tobacco products by 19.2%, in the manufacture of wood and of products of wood and cork, except furniture; manufacture of articles of straw and plaiting materials by 9.9%, in the manufacture of basic pharmaceutical products and pharmaceutical preparations by 8.8%.

Figure 3. Changes of Industrial Production Indices compared to the same month of the previous year (Working day adjusted)



The final data on Industrial Production and Turnover Indices for September 2016 can be found on the NSI website: <http://www.nsi.bg/en>.

Annex

Table 1
Changes of Industrial Production Indices compared to the previous month^{1,2}
(Per cent)

Economic activities	NACE.BG - 2008	2016					
		V	VI	VII	VIII	IX	X
Industry	B_TO_E36	-1.7	3.9	-1.5	0.6	-0.3	0.3
Mining and quarrying	B	-1.5	0.2	0.4	0.0	0.8	0.5
Mining of coal and lignite	B05	5.2	-5.1	5.7	-8.7	0.9	15.2
Extraction of crude petroleum and natural gas	B06
Mining of metal ores	B07	-11.5	12.2	-2.9	-3.6	9.7	-7.8
Other mining and quarrying	B08	-3.0	-0.7	1.9	3.6	-9.7	-4.9
Mining support service activities	B09
Manufacturing	C	-3.1	5.4	-1.5	0.7	0.1	-0.5
Manufacture of food products	C10	0.4	-0.9	0.6	2.5	-5.4	2.8
Manufacture of beverages	C11	-13.7	10.5	5.1	-2.1	-2.3	3.4
Manufacture of tobacco products	C12	-18.5	20.1	17.9	-5.1	-11.6	15.0
Manufacture of textiles	C13	-1.1	-5.0	-4.4	-0.7	2.0	1.7
Manufacture of wearing apparel	C14	-1.6	3.2	0.3	-5.9	6.2	-2.1
Manufacture of leather and related products	C15	-8.4	1.0	-2.0	-8.2	14.3	-5.6
Manufacture of wood and of products of wood and cork, except furniture; manufacture of articles of straw and plaiting materials	C16	-5.0	0.3	-3.5	1.6	-9.4	7.2
Manufacture of paper and paper products	C17	-0.9	3.7	-2.5	1.8	-3.4	0.7
Printing and reproduction of recorded media	C18	-5.8	4.3	2.0	-3.4	-0.5	6.3
Manufacture of coke and refined petroleum products	C19
Manufacture of chemicals and chemical products	C20	1.7	-3.2	17.0	-0.6	-4.4	7.3
Manufacture of basic pharmaceutical products and pharmaceutical preparations	C21	-4.5	6.1	-4.5	-3.1	-6.4	5.9
Manufacture of rubber and plastic products	C22	-6.1	3.9	-1.2	0.2	-2.7	5.8
Manufacture of other non-metallic mineral products	C23	-4.5	1.8	-1.0	1.3	-2.7	1.1
Manufacture of basic metals	C24	-4.2	3.4	6.9	5.3	4.5	0.9
Manufacture of fabricated metal products, except machinery and equipment	C25	-13.0	36.4	-19.1	5.4	12.6	-16.2
Manufacture of computer, electronic and optical products	C26	-2.2	2.5	2.0	1.0	-1.1	12.3
Manufacture of electrical equipment	C27	-0.1	4.7	0.3	-2.3	-0.8	1.6
Manufacture of machinery and equipment n.e.c.	C28	-1.5	7.1	2.3	-4.8	-3.7	5.1
Manufacture of motor vehicles, trailers and semi-trailers	C29	3.7	-2.4	-3.1	7.4	-6.4	2.7
Manufacture of other transport equipment	C30	-18.0	-3.0	0.7	22.4	-15.4	-8.3
Manufacture of furniture	C31	-5.4	-5.7	8.4	-4.1	1.8	3.0
Other manufacturing	C32	5.0	0.7	-9.0	14.7	0.4	-4.6
Repair and installation of machinery and equipment	C33	4.4	-4.7	6.8	-7.9	16.5	-10.7
Electricity, gas, steam and air conditioning supply	D	3.1	0.4	-3.1	0.7	-1.9	1.9
Electricity, gas, steam and air conditioning supply	D35	3.1	0.4	-3.1	0.7	-1.9	1.9

¹ Seasonally adjusted.

² ".." - Confidential data.



Table 2

Changes of Industrial Production Indices compared to the same month of the previous year^{1,2}
(Per cent)

Economic activities	NACE.BG - 2008	2016					
		V	VI	VII	VIII	IX	X
Industry	B_TO_E36	-3.4	4.0	2.3	2.6	3.4	2.8
Mining and quarrying	B	-4.4	-3.9	0.0	1.8	-0.5	8.8
Mining of coal and lignite	B05	-9.3	-16.2	-13.5	-26.6	-24.8	12.1
Extraction of crude petroleum and natural gas	B06
Mining of metal ores	B07	-3.3	3.0	13.0	20.5	19.6	10.0
Other mining and quarrying	B08	-6.7	-13.4	-11.0	1.4	-11.6	-21.9
Mining support service activities	B09
Manufacturing	C	-3.8	5.6	2.7	4.3	4.7	1.7
Manufacture of food products	C10	0.5	2.5	7.0	8.3	1.1	1.3
Manufacture of beverages	C11	-10.9	2.8	10.2	6.5	5.2	8.9
Manufacture of tobacco products	C12	-50.8	-32.6	-12.0	-18.4	-23.2	-19.2
Manufacture of textiles	C13	7.3	2.1	-5.0	-2.8	-2.1	-6.3
Manufacture of wearing apparel	C14	2.2	2.4	6.4	-1.6	5.4	-4.1
Manufacture of leather and related products	C15	-1.3	-3.1	-12.0	-19.4	-3.7	-5.1
Manufacture of wood and of products of wood and cork, except furniture; manufacture of articles of straw and plaiting materials	C16	-7.7	-7.2	-5.2	-8.2	-16.9	-9.9
Manufacture of paper and paper products	C17	4.6	5.8	9.1	10.8	-4.0	-6.1
Printing and reproduction of recorded media	C18	-2.0	-1.5	4.8	1.0	0.6	5.0
Manufacture of coke and refined petroleum products	C19
Manufacture of chemicals and chemical products	C20	6.8	-6.7	0.6	-0.7	4.9	10.0
Manufacture of basic pharmaceutical products and pharmaceutical preparations	C21	-9.2	3.1	-5.8	-6.5	-16.1	-8.8
Manufacture of rubber and plastic products	C22	0.2	8.2	7.6	11.2	4.1	9.0
Manufacture of other non-metallic mineral products	C23	-11.3	-4.0	-7.4	-3.1	-8.6	-4.8
Manufacture of basic metals	C24	-23.5	-14.0	-2.5	-3.2	18.0	13.7
Manufacture of fabricated metal products, except machinery and equipment	C25	0.0	59.0	14.6	20.4	40.7	7.0
Manufacture of computer, electronic and optical products	C26	-0.2	0.7	3.9	6.1	11.2	15.2
Manufacture of electrical equipment	C27	-6.6	10.8	3.3	-0.5	1.2	0.6
Manufacture of machinery and equipment n.e.c.	C28	-8.7	0.5	5.8	0.0	-3.7	2.5
Manufacture of motor vehicles, trailers and semi-trailers	C29	18.1	9.6	2.3	23.8	1.6	6.1
Manufacture of other transport equipment	C30	-13.8	-3.9	-6.4	6.7	-19.6	-27.1
Manufacture of furniture	C31	3.8	-0.5	7.0	6.5	-2.0	7.4
Other manufacturing	C32	21.9	19.3	1.2	20.6	26.3	13.6
Repair and installation of machinery and equipment	C33	-5.8	-9.4	-3.3	-5.8	22.5	-8.1
Electricity, gas, steam and air conditioning supply	D	-0.7	1.6	-0.7	-1.2	0.5	3.5
Electricity, gas, steam and air conditioning supply	D35	-0.7	1.6	-0.7	-1.2	0.5	3.5

¹ Working day adjusted.

² ".." - Confidential data.

Table 3

Industrial Production Indices¹
(Seasonally adjusted, 2010 = 100)

NACE.BG - 2008	2015			2016									
	X	XI	XII	I	II	III	IV	V	VI	VII	VIII	IX	X
B_TO_E36	110.4	110.9	112.5	113.0	113.2	112.4	111.9	110.0	114.2	112.5	113.2	112.9	113.3
B	97.1	100.1	100.3	102.2	101.0	100.8	100.1	98.5	98.7	99.1	99.2	99.9	100.4
B05	95.1	105.6	116.8	112.6	101.1	86.0	94.7	99.5	94.5	99.8	91.1	92.0	106.0
B06
B07	88.4	97.4	87.1	93.6	89.3	104.0	103.5	91.5	102.8	99.8	96.2	105.5	97.2
B08	119.1	108.8	129.4	99.2	122.0	114.0	108.5	105.3	104.6	106.5	110.3	99.6	94.7
B09
C	116.2	117.0	118.6	117.9	119.4	118.2	117.1	113.5	119.7	117.9	118.7	118.9	118.4
C10	90.8	89.6	89.0	93.5	90.5	89.4	92.1	92.5	91.6	92.2	94.6	89.5	92.0
C11	99.6	100.4	97.7	104.7	106.8	102.8	108.5	93.6	103.5	108.8	106.6	104.1	107.7
C12	92.7	100.9	107.4	110.9	106.2	88.2	67.6	55.1	66.2	78.0	74.0	65.4	75.3
C13	116.4	110.5	108.7	111.3	118.6	114.2	118.2	116.9	111.0	106.2	105.4	107.5	109.3
C14	103.0	97.5	100.7	100.1	98.4	100.0	98.7	97.1	100.2	100.6	94.7	100.6	98.5
C15	73.5	70.7	73.7	73.7	74.4	75.4	78.1	71.5	72.2	70.8	65.0	74.3	70.1
C16	96.6	103.4	103.6	96.5	104.0	99.7	94.8	90.1	90.4	87.2	88.6	80.3	86.1
C17	136.2	135.0	123.1	117.6	127.3	128.6	129.4	128.3	133.0	129.6	131.9	127.4	128.3
C18	115.6	132.7	116.5	130.3	130.2	122.9	117.7	110.9	115.7	118.0	114.0	113.4	120.5
C19
C20	114.9	100.8	98.3	104.5	113.5	101.3	107.4	109.2	105.7	123.6	122.8	117.4	125.9
C21	148.5	150.5	151.5	151.4	158.6	153.5	145.9	139.3	147.7	141.1	136.8	128.0	135.6
C22	134.9	132.5	135.2	142.9	146.5	145.2	147.2	138.3	143.6	141.9	142.3	138.5	146.6
C23	128.5	132.8	138.2	130.9	129.6	128.8	125.9	120.3	122.5	121.2	122.8	119.5	120.8
C24	92.3	92.5	93.1	90.5	88.0	87.6	85.6	82.0	84.8	90.6	95.4	99.8	100.7
C25	135.4	148.7	147.6	174.7	152.5	155.2	154.6	134.5	183.4	148.4	156.4	176.2	147.6
C26	154.6	145.9	136.8	156.3	141.0	143.9	152.0	148.7	152.4	155.4	157.0	155.2	174.3
C27	147.4	147.8	143.3	147.9	155.5	155.9	144.0	143.8	150.7	151.1	147.7	146.6	148.9
C28	139.8	135.6	138.2	141.5	140.9	142.0	137.6	135.5	145.1	148.4	141.2	136.0	143.0
C29	160.8	157.4	157.8	158.9	177.4	176.3	170.0	176.2	171.9	166.6	178.9	167.5	172.0
C30	104.0	104.3	98.8	93.6	105.6	103.5	105.3	86.4	83.8	84.3	103.2	87.3	80.1
C31	126.1	129.0	126.9	132.1	130.5	134.3	138.5	131.0	123.5	133.9	128.5	130.9	134.8
C32	181.6	186.8	206.5	222.3	200.4	214.3	195.9	205.7	207.2	188.4	216.1	216.9	207.0
C33	93.1	97.3	82.7	90.0	77.6	76.0	83.9	87.6	83.4	89.1	82.0	95.6	85.4
D	101.0	99.5	102.0	105.3	102.1	101.9	103.6	106.7	107.2	103.9	104.6	102.6	104.5
D35	101.0	99.5	102.0	105.3	102.1	101.9	103.6	106.7	107.2	103.9	104.6	102.6	104.5

¹ ".." - Confidential data.



Table 4

Industrial Production Indices¹
(Working day adjusted, 2010 = 100)

NACE.BG - 2008	2013	2014	2015			2016									
	X	X	X	XI	XII	I	II	III	IV	V	VI	VII	VIII	IX	X
B_TO_E36	113.9	113.3	114.6	118.0	116.1	108.2	106.5	112.4	109.9	103.7	115.9	116.3	109.2	113.0	117.9
B	135.5	112.6	101.3	108.2	109.8	103.5	95.6	95.4	94.8	89.9	93.2	98.0	96.6	104.6	110.2
B05	146.9	133.3	117.6	118.0	136.8	128.0	98.7	71.1	77.4	81.9	69.9	92.2	89.4	99.9	131.8
B06
B07	130.1	99.3	88.4	97.4	87.1	93.6	89.3	104.0	103.5	91.5	102.8	99.8	96.2	105.5	97.2
B08	124.7	137.9	142.1	121.2	135.1	59.9	86.7	101.9	107.7	110.0	114.4	120.9	123.0	109.5	110.9
B09
C	114.6	118.3	123.6	123.8	114.7	103.1	107.8	117.0	118.2	111.5	127.7	126.0	115.7	121.8	125.7
C10	101.9	99.7	100.3	96.5	92.9	78.9	78.9	87.7	89.0	89.8	93.6	93.2	97.4	96.1	101.6
C11	89.3	77.4	86.0	89.1	100.3	66.6	74.4	95.6	114.1	101.7	126.9	137.0	135.9	111.4	93.7
C12	95.7	114.5	90.9	97.3	109.3	85.0	84.2	89.4	60.1	51.5	71.5	94.1	72.6	68.3	73.5
C13	100.8	113.0	119.7	113.8	94.4	95.2	113.9	126.1	130.4	133.2	123.1	111.4	83.6	103.1	112.1
C14	91.8	94.3	103.8	98.2	100.5	104.8	95.5	93.5	92.3	88.2	107.8	117.3	91.2	97.8	99.6
C15	83.0	85.8	76.8	71.5	68.4	74.9	71.9	73.3	68.7	58.5	73.8	86.6	64.4	83.3	72.9
C16	108.1	111.5	107.8	112.5	99.0	75.1	87.4	97.1	92.5	89.0	98.4	96.2	90.5	86.4	97.2
C17	116.8	119.2	137.9	134.6	118.0	109.4	120.0	132.3	131.5	130.1	139.2	134.9	131.5	129.1	129.5
C18	104.8	113.6	123.1	149.2	129.6	112.9	118.7	120.1	113.8	106.4	117.9	116.6	108.2	114.2	129.2
C19
C20	95.2	127.4	113.8	104.0	96.3	97.0	106.3	110.8	111.3	109.4	109.7	125.5	116.9	117.7	125.2
C21	143.1	153.3	160.1	155.1	155.2	136.5	160.6	160.3	152.1	133.4	153.3	131.6	118.8	122.2	145.9
C22	126.6	144.3	150.4	138.1	115.5	120.8	128.5	144.3	148.7	138.9	156.5	156.0	142.4	145.6	164.0
C23	126.2	126.3	141.7	143.0	123.3	89.7	103.3	126.0	132.9	127.3	134.9	130.6	131.0	128.5	134.9
C24	117.8	115.0	103.4	98.2	70.9	93.9	84.2	82.0	99.9	80.4	79.6	115.6	89.2	90.5	117.5
C25	132.6	124.6	144.1	165.6	165.9	135.8	133.8	152.3	149.5	124.7	199.2	153.1	150.4	187.0	154.2
C26	142.2	145.3	158.6	153.7	150.0	139.7	129.6	148.5	150.3	150.2	160.6	160.1	137.8	155.5	182.8
C27	129.3	145.4	162.7	162.6	130.2	135.7	149.3	163.3	142.7	138.7	157.0	160.7	129.3	146.2	163.6
C28	142.4	146.5	143.8	143.4	129.3	125.4	135.4	151.4	139.8	133.0	157.6	158.3	127.8	136.5	147.5
C29	119.1	166.9	174.6	173.3	139.8	153.7	173.5	187.4	175.0	176.2	182.9	166.0	148.0	169.7	185.2
C30	83.5	78.0	101.1	96.9	103.7	72.0	96.2	113.7	112.8	99.7	86.8	82.4	86.8	78.2	73.7
C31	135.7	138.3	139.5	141.6	127.3	112.9	115.5	129.9	135.7	128.4	124.1	138.9	129.3	138.4	149.9
C32	185.9	165.7	210.9	195.7	178.3	188.4	171.2	217.5	189.7	206.3	236.0	190.3	221.9	230.4	239.6
C33	90.0	91.7	99.4	114.3	111.3	64.8	65.4	74.1	74.7	81.3	83.9	89.4	80.4	100.0	91.3
D	104.9	101.7	95.5	108.2	128.7	127.5	112.5	110.4	93.7	87.6	92.5	94.8	95.1	90.4	98.8
D35	104.9	101.7	95.5	108.2	128.7	127.5	112.5	110.4	93.7	87.6	92.5	94.8	95.1	90.4	98.8

¹ "..." - Confidential data.