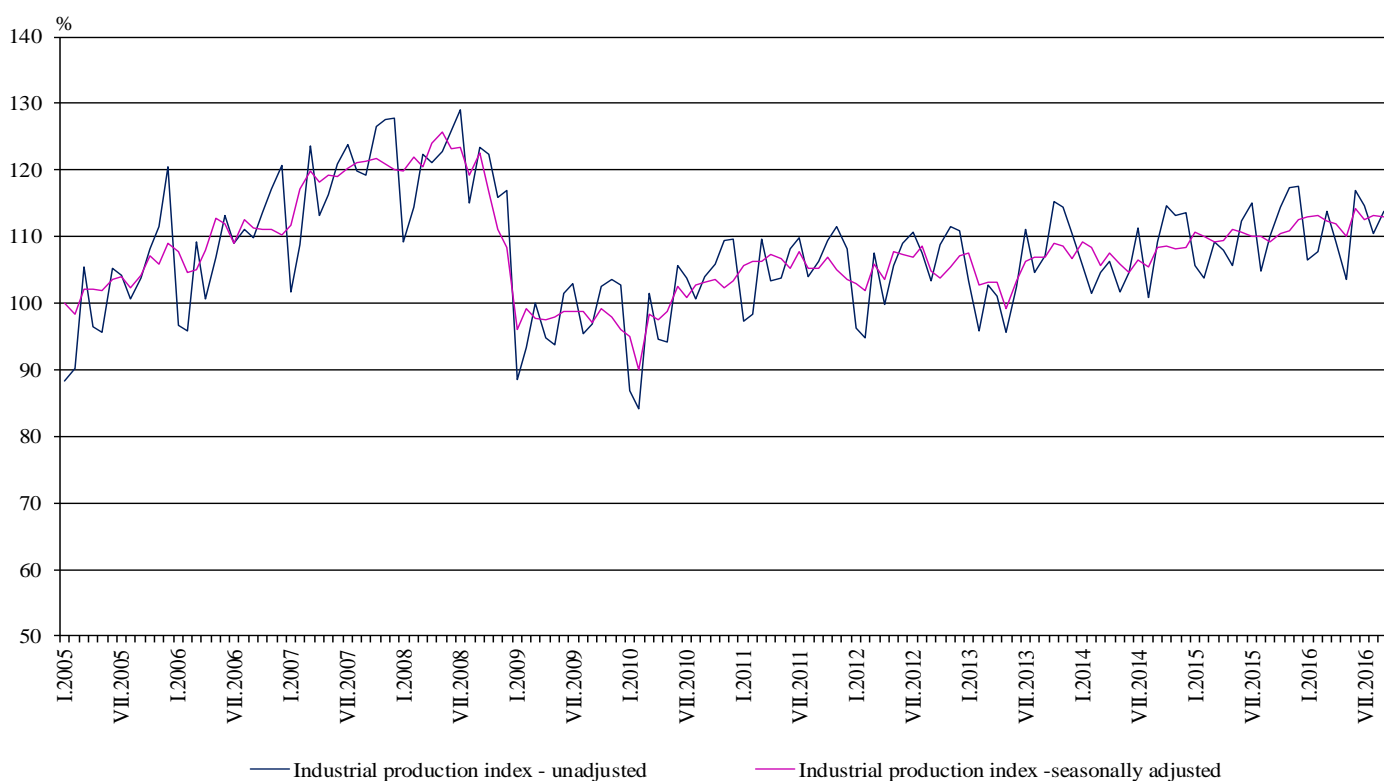


INDUSTRIAL PRODUCTION INDICES IN SEPTEMBER 2016¹

According to the preliminary data the Industrial Production Index², seasonally adjusted³, decreased by 0.2% in September 2016 as compared to August 2016.

In September 2016 working day adjusted⁴ Industrial Production Index rose by 3.3% in comparison with the same month of 2015.

Figure 1. Industrial Production Indices (2010 = 100)



¹ September 2016 data are preliminary.

² Monthly Industrial Production and Industrial turnover indices measure changes in production and turnover values of industrial enterprises. This information can be used to assess the current economic development and for short-term forecasts. Indices do not measure the actual production level, it aims to measure the average change in value of production between two points of time. Indices are compiled on the base of information collected through representative sampling survey on industrial enterprises. The sample covers enterprises with annual turnover more than 97% of total turnover in industry.

Industrial production indices are calculated at constant base year that is to say they are weighted with the structure of the value added at factor costs in the base year.

³ Seasonal adjustment is a statistical method, which eliminates the seasonal component of time series.

⁴ Working day adjustment is an adjustment for variations caused by calendar effects, different number of calendar and working days in the months, national holidays and outliers (for example the presence of more non-working days in May could contribute to the decline in the production in some activities).

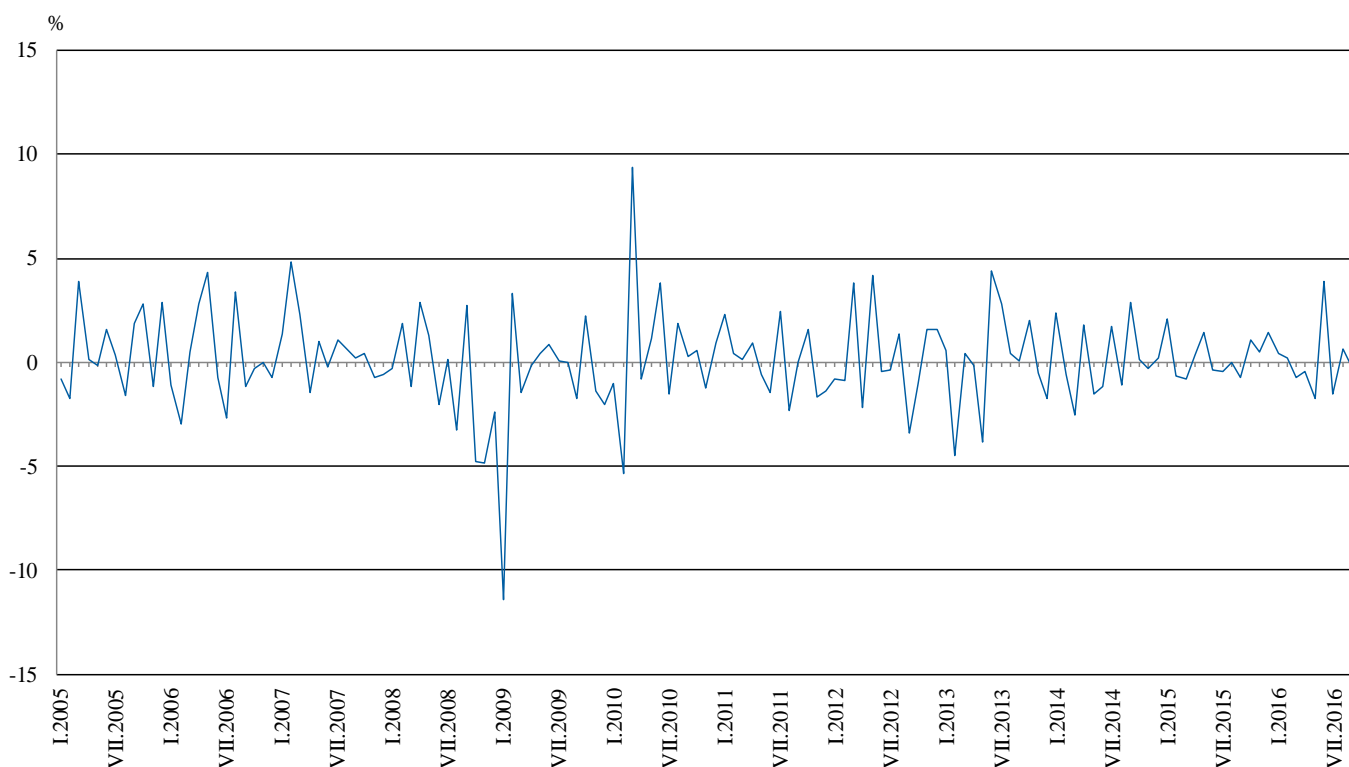


Monthly comparisons

In September 2016 as compared to August 2016, the seasonally adjusted Industrial Production Index decreased in the electricity, gas, steam and air conditioning supply by 1.9%, the mining and quarrying industry did not change, while in the manufacturing an increase by 0.3% was seen.

The most significant increases of production in the manufacturing were registered in the repair and installation of machinery and equipment by 15.4%, in the manufacture of leather and related products by 13.6%, in the manufacture of fabricated metal products, except machinery and equipment by 13.0%, in the manufacture of wearing apparel by 6.3%. There were decreases in the manufacture of other transport equipment by 15.1%, in the manufacture of tobacco products by 11.3%, in the manufacture of wood and of products of wood and cork, except furniture; manufacture of articles of straw and plaiting materials by 7.1%, in the manufacture of motor vehicles, trailers and semi-trailers by 6.6%.

**Figure 2. Changes of Industrial Production Indices compared to the previous month
(Seasonally adjusted)**



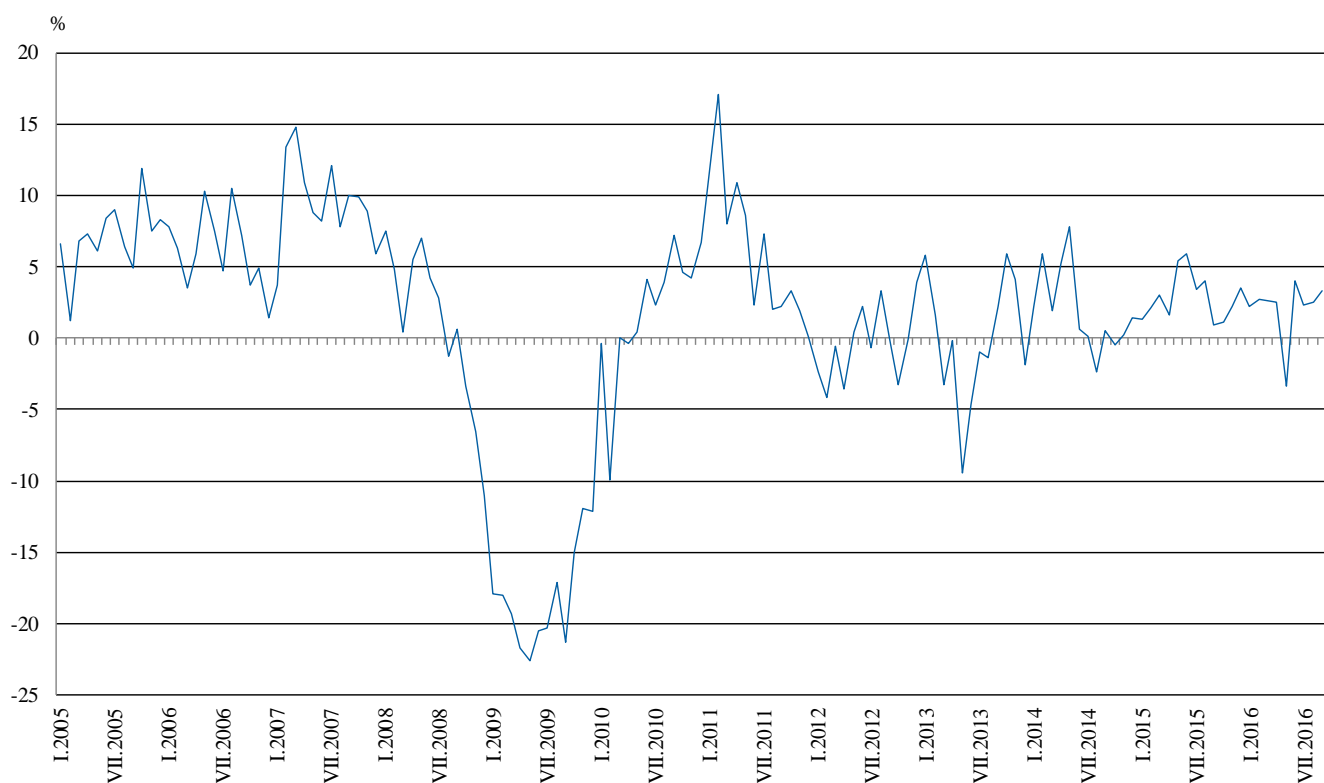


Annual comparisons

On annual basis in September 2016 Industrial Production Index calculated from working day adjusted data increased in the manufacturing by 4.7% and in the electricity, gas, steam and air conditioning supply by 0.5%, while in the mining and quarrying industry a decrease by 1.9% was registered.

In the manufacturing, the more significant increases compared to the same month of the previous year were seen in the manufacture of fabricated metal products, except machinery and equipment by 39.9%, in the repair and installation of machinery and equipment by 21.0%, in the manufacture of basic metals by 19.5%, in the manufacture of computer, electronic and optical products by 11.4%. Decreases were registered in the manufacture of tobacco products by 23.2%, in the manufacture of other transport equipment by 20.2%, in the manufacture of basic pharmaceutical products and pharmaceutical preparations by 16.4%, in the manufacture of wood and of products of wood and cork, except furniture; manufacture of articles of straw and plaiting materials by 14.6%.

Figure 3. Changes of Industrial Production Indices compared to the same month of the previous year (Working day adjusted)



The final data on Industrial Production and Turnover Indices for August 2016 can be found on the NSI website: <http://www.nsi.bg/en>.

Annex

Table 1
Changes of Industrial Production Indices compared to the previous month^{1,2}
(Per cent)

| Economic Activities | NACE.BG - 2008 | 2016 | | | | | |
|---|-------------------|-------------|-------------|------------|-------------|------------|-------------|
| | | IV | V | VI | VII | VIII | IX |
| Industry | B_TO_E36 | -0.4 | -1.7 | 3.9 | -1.5 | 0.6 | -0.2 |
| Mining and quarrying | B | -0.8 | -1.5 | 0.2 | 0.4 | 0.0 | 0.0 |
| Mining of coal and lignite | B05 | 10.1 | 5.2 | -5.1 | 5.7 | -8.7 | 0.2 |
| Extraction of crude petroleum and natural gas | B06 | .. | .. | .. | .. | .. | .. |
| Mining of metal ores | B07 | -0.5 | -11.5 | 12.2 | -2.9 | -3.6 | 7.5 |
| Other mining and quarrying | B08 | -4.8 | -3.0 | -0.7 | 1.9 | 3.6 | -11.2 |
| Mining support service activities | B09 | .. | .. | .. | .. | .. | .. |
| Manufacturing | C | -1.0 | -3.1 | 5.4 | -1.5 | 0.7 | 0.3 |
| Manufacture of food products | C10 | 3.0 | 0.4 | -0.9 | 0.6 | 2.5 | -6.5 |
| Manufacture of beverages | C11 | 5.6 | -13.7 | 10.5 | 5.1 | -2.1 | -2.7 |
| Manufacture of tobacco products | C12 | -23.4 | -18.5 | 20.1 | 17.9 | -5.1 | -11.3 |
| Manufacture of textiles | C13 | 3.4 | -1.1 | -5.0 | -4.4 | -0.7 | 1.6 |
| Manufacture of wearing apparel | C14 | -1.3 | -1.6 | 3.2 | 0.3 | -5.9 | 6.3 |
| Manufacture of leather and related products | C15 | 3.5 | -8.4 | 1.0 | -2.0 | -8.2 | 13.6 |
| Manufacture of wood and of products of wood and cork, except furniture; manufacture of articles of straw and plaiting materials | C16 | -4.9 | -5.0 | 0.3 | -3.5 | 1.6 | -7.1 |
| Manufacture of paper and paper products | C17 | 0.7 | -0.9 | 3.7 | -2.5 | 1.8 | -3.2 |
| Printing and reproduction of recorded media | C18 | -4.3 | -5.8 | 4.3 | 2.0 | -3.4 | -0.9 |
| Manufacture of coke and refined petroleum products | C19 | .. | .. | .. | .. | .. | .. |
| Manufacture of chemicals and chemical products | C20 | 6.0 | 1.7 | -3.2 | 17.0 | -0.6 | -3.8 |
| Manufacture of basic pharmaceutical products and pharmaceutical preparations | C21 | -5.0 | -4.5 | 6.1 | -4.5 | -3.1 | -6.5 |
| Manufacture of rubber and plastic products | C22 | 1.4 | -6.1 | 3.9 | -1.2 | 0.2 | -2.2 |
| Manufacture of other non-metallic mineral products | C23 | -2.3 | -4.5 | 1.8 | -1.0 | 1.3 | -1.8 |
| Manufacture of basic metals | C24 | -2.3 | -4.2 | 3.4 | 6.9 | 5.3 | 3.2 |
| Manufacture of fabricated metal products, except machinery and equipment | C25 | -0.4 | -13.0 | 36.4 | -19.1 | 5.4 | 13.0 |
| Manufacture of computer, electronic and optical products | C26 | 5.6 | -2.2 | 2.5 | 2.0 | 1.0 | -1.4 |
| Manufacture of electrical equipment | C27 | -7.6 | -0.1 | 4.7 | 0.3 | -2.3 | -0.2 |
| Manufacture of machinery and equipment n.e.c. | C28 | -3.1 | -1.5 | 7.1 | 2.3 | -4.8 | -4.2 |
| Manufacture of motor vehicles, trailers and semi-trailers | C29 | -3.6 | 3.7 | -2.4 | -3.1 | 7.4 | -6.6 |
| Manufacture of other transport equipment | C30 | 1.8 | -18.0 | -3.0 | 0.7 | 22.4 | -15.1 |
| Manufacture of furniture | C31 | 3.1 | -5.4 | -5.7 | 8.4 | -4.1 | 2.1 |
| Other manufacturing | C32 | -8.6 | 5.0 | 0.7 | -9.0 | 14.7 | 0.6 |
| Repair and installation of machinery and equipment | C33 | 10.4 | 4.4 | -4.7 | 6.8 | -7.9 | 15.4 |
| Electricity, gas, steam and air conditioning supply | D | 1.6 | 3.1 | 0.4 | -3.1 | 0.7 | -1.9 |
| Electricity, gas, steam and air conditioning supply | D35 | 1.6 | 3.1 | 0.4 | -3.1 | 0.7 | -1.9 |

¹ Seasonally adjusted.

² ".." - Confidential data.

Table 2

Changes of Industrial Production Indices compared to the same month of the previous year^{1,2}
(Per cent)

| Economic Activities | NACE.BG - 2008 | 2016 | | | | | |
|---|-----------------|-------------|-------------|-------------|-------------|-------------|-------------|
| | | IV | V | VI | VII | VIII | IX |
| Industry | B_TO_E36 | 2.6 | -3.4 | 4.0 | 2.3 | 2.6 | 3.3 |
| Mining and quarrying | B | 2.4 | -4.4 | -3.9 | 0.0 | 1.8 | -1.9 |
| Mining of coal and lignite | B05 | -25.8 | -9.3 | -16.2 | -13.5 | -26.6 | -24.9 |
| Extraction of crude petroleum and natural gas | B06 | .. | .. | .. | .. | .. | .. |
| Mining of metal ores | B07 | 22.8 | -3.3 | 3.0 | 13.0 | 20.5 | 17.3 |
| Other mining and quarrying | B08 | -2.0 | -6.7 | -13.4 | -11.0 | 1.4 | -13.9 |
| Mining support service activities | B09 | .. | .. | .. | .. | .. | .. |
| Manufacturing | C | 5.0 | -3.8 | 5.6 | 2.7 | 4.3 | 4.7 |
| Manufacture of food products | C10 | 1.3 | 0.5 | 2.5 | 7.0 | 8.3 | -0.2 |
| Manufacture of beverages | C11 | 11.5 | -10.9 | 2.8 | 10.2 | 6.5 | 5.1 |
| Manufacture of tobacco products | C12 | -42.4 | -50.8 | -32.6 | -12.0 | -18.4 | -23.2 |
| Manufacture of textiles | C13 | 15.7 | 7.3 | 2.1 | -5.0 | -2.8 | -2.3 |
| Manufacture of wearing apparel | C14 | 8.0 | 2.2 | 2.4 | 6.4 | -1.6 | 5.3 |
| Manufacture of leather and related products | C15 | -2.4 | -1.3 | -3.1 | -12.0 | -19.4 | -4.5 |
| Manufacture of wood and of products of wood and cork, except furniture; manufacture of articles of straw and plaiting materials | C16 | -7.5 | -7.7 | -7.2 | -5.2 | -8.2 | -14.6 |
| Manufacture of paper and paper products | C17 | 13.1 | 4.6 | 5.8 | 9.1 | 10.8 | -3.9 |
| Printing and reproduction of recorded media | C18 | 7.5 | -2.0 | -1.5 | 4.8 | 1.0 | 0.3 |
| Manufacture of coke and refined petroleum products | C19 | .. | .. | .. | .. | .. | .. |
| Manufacture of chemicals and chemical products | C20 | 1.3 | 6.8 | -6.7 | 0.6 | -0.7 | 5.7 |
| Manufacture of basic pharmaceutical products and pharmaceutical preparations | C21 | -4.5 | -9.2 | 3.1 | -5.8 | -6.5 | -16.4 |
| Manufacture of rubber and plastic products | C22 | 12.3 | 0.2 | 8.2 | 7.6 | 11.2 | 5.1 |
| Manufacture of other non-metallic mineral products | C23 | 5.8 | -11.3 | -4.0 | -7.4 | -3.1 | -7.3 |
| Manufacture of basic metals | C24 | -17.9 | -23.5 | -14.0 | -2.5 | -3.2 | 19.5 |
| Manufacture of fabricated metal products, except machinery and equipment | C25 | 37.9 | 0.0 | 59.0 | 14.6 | 20.4 | 39.9 |
| Manufacture of computer, electronic and optical products | C26 | 4.1 | -0.2 | 0.7 | 3.9 | 6.1 | 11.4 |
| Manufacture of electrical equipment | C27 | 0.3 | -6.6 | 10.8 | 3.3 | -0.5 | 2.0 |
| Manufacture of machinery and equipment n.e.c. | C28 | -3.7 | -8.7 | 0.5 | 5.8 | 0.0 | -4.0 |
| Manufacture of motor vehicles, trailers and semi-trailers | C29 | 9.8 | 18.1 | 9.6 | 2.3 | 23.8 | 1.3 |
| Manufacture of other transport equipment | C30 | 29.3 | -13.8 | -3.9 | -6.4 | 6.7 | -20.2 |
| Manufacture of furniture | C31 | 7.4 | 3.8 | -0.5 | 7.0 | 6.5 | -1.4 |
| Other manufacturing | C32 | 20.1 | 21.9 | 19.3 | 1.2 | 20.6 | 26.5 |
| Repair and installation of machinery and equipment | C33 | 0.0 | -5.8 | -9.4 | -3.3 | -5.8 | 21.0 |
| Electricity, gas, steam and air conditioning supply | D | -6.8 | -0.7 | 1.6 | -0.7 | -1.2 | 0.5 |
| Electricity, gas, steam and air conditioning supply | D35 | -6.8 | -0.7 | 1.6 | -0.7 | -1.2 | 0.5 |

¹ Working day adjusted.

² ".." - Confidential data.

Table 3

Industrial Production Indices¹
(Seasonally adjusted, 2010 = 100)

| NACE.BG - 2008 | 2015 | | | | 2016 | | | | | | | | |
|-----------------|--------------|--------------|--------------|--------------|--------------|--------------|--------------|--------------|--------------|--------------|--------------|--------------|--------------|
| | IX | X | XI | XII | I | II | III | IV | V | VI | VII | VIII | IX |
| B_TO_E36 | 109.2 | 110.4 | 110.9 | 112.5 | 113.0 | 113.2 | 112.4 | 111.9 | 110.0 | 114.2 | 112.5 | 113.2 | 112.9 |
| B | 100.3 | 97.1 | 100.1 | 100.3 | 102.2 | 101.0 | 100.8 | 100.1 | 98.5 | 98.7 | 99.1 | 99.2 | 99.2 |
| B05 | 124.4 | 95.1 | 105.6 | 116.8 | 112.6 | 101.1 | 86.0 | 94.7 | 99.5 | 94.5 | 99.8 | 91.1 | 91.3 |
| B06 | .. | .. | .. | .. | .. | .. | .. | .. | .. | .. | .. | .. | .. |
| B07 | 88.2 | 88.4 | 97.4 | 87.1 | 93.6 | 89.3 | 104.0 | 103.5 | 91.5 | 102.8 | 99.8 | 96.2 | 103.4 |
| B08 | 111.7 | 119.1 | 108.8 | 129.4 | 99.2 | 122.0 | 114.0 | 108.5 | 105.3 | 104.6 | 106.5 | 110.3 | 98.0 |
| B09 | .. | .. | .. | .. | .. | .. | .. | .. | .. | .. | .. | .. | .. |
| C | 113.6 | 116.2 | 117.0 | 118.6 | 117.9 | 119.4 | 118.2 | 117.1 | 113.5 | 119.7 | 117.9 | 118.7 | 119.0 |
| C10 | 88.1 | 90.8 | 89.6 | 89.0 | 93.5 | 90.5 | 89.4 | 92.1 | 92.5 | 91.6 | 92.2 | 94.6 | 88.4 |
| C11 | 98.3 | 99.6 | 100.4 | 97.7 | 104.7 | 106.8 | 102.8 | 108.5 | 93.6 | 103.5 | 108.8 | 106.6 | 103.7 |
| C12 | 82.1 | 92.7 | 100.9 | 107.4 | 110.9 | 106.2 | 88.2 | 67.6 | 55.1 | 66.2 | 78.0 | 74.0 | 65.7 |
| C13 | 108.8 | 116.4 | 110.5 | 108.7 | 111.3 | 118.6 | 114.2 | 118.2 | 116.9 | 111.0 | 106.2 | 105.4 | 107.1 |
| C14 | 96.6 | 103.0 | 97.5 | 100.7 | 100.1 | 98.4 | 100.0 | 98.7 | 97.1 | 100.2 | 100.6 | 94.7 | 100.6 |
| C15 | 78.4 | 73.5 | 70.7 | 73.7 | 73.7 | 74.4 | 75.4 | 78.1 | 71.5 | 72.2 | 70.8 | 65.0 | 73.8 |
| C16 | 96.7 | 96.6 | 103.4 | 103.6 | 96.5 | 104.0 | 99.7 | 94.8 | 90.1 | 90.4 | 87.2 | 88.6 | 82.4 |
| C17 | 132.5 | 136.2 | 135.0 | 123.1 | 117.6 | 127.3 | 128.6 | 129.4 | 128.3 | 133.0 | 129.6 | 131.9 | 127.6 |
| C18 | 111.5 | 115.6 | 132.7 | 116.5 | 130.3 | 130.2 | 122.9 | 117.7 | 110.9 | 115.7 | 118.0 | 114.0 | 113.0 |
| C19 | .. | .. | .. | .. | .. | .. | .. | .. | .. | .. | .. | .. | .. |
| C20 | 111.9 | 114.9 | 100.8 | 98.3 | 104.5 | 113.5 | 101.3 | 107.4 | 109.2 | 105.7 | 123.6 | 122.8 | 118.1 |
| C21 | 145.6 | 148.5 | 150.5 | 151.5 | 151.4 | 158.6 | 153.5 | 145.9 | 139.3 | 147.7 | 141.1 | 136.8 | 128.0 |
| C22 | 131.1 | 134.9 | 132.5 | 135.2 | 142.9 | 146.5 | 145.2 | 147.2 | 138.3 | 143.6 | 141.9 | 142.3 | 139.2 |
| C23 | 128.4 | 128.5 | 132.8 | 138.2 | 130.9 | 129.6 | 128.8 | 125.9 | 120.3 | 122.5 | 121.2 | 122.8 | 120.7 |
| C24 | 91.1 | 92.3 | 92.5 | 93.1 | 90.5 | 88.0 | 87.6 | 85.6 | 82.0 | 84.8 | 90.6 | 95.4 | 98.5 |
| C25 | 129.1 | 135.4 | 148.7 | 147.6 | 174.7 | 152.5 | 155.2 | 154.6 | 134.5 | 183.4 | 148.4 | 156.4 | 176.7 |
| C26 | 139.1 | 154.6 | 145.9 | 136.8 | 156.3 | 141.0 | 143.9 | 152.0 | 148.7 | 152.4 | 155.4 | 157.0 | 154.8 |
| C27 | 143.0 | 147.4 | 147.8 | 143.3 | 147.9 | 155.5 | 155.9 | 144.0 | 143.8 | 150.7 | 151.1 | 147.7 | 147.4 |
| C28 | 139.0 | 139.8 | 135.6 | 138.2 | 141.5 | 140.9 | 142.0 | 137.6 | 135.5 | 145.1 | 148.4 | 141.2 | 135.4 |
| C29 | 162.7 | 160.8 | 157.4 | 157.8 | 158.9 | 177.4 | 176.3 | 170.0 | 176.2 | 171.9 | 166.6 | 178.9 | 167.1 |
| C30 | 106.7 | 104.0 | 104.3 | 98.8 | 93.6 | 105.6 | 103.5 | 105.3 | 86.4 | 83.8 | 84.3 | 103.2 | 87.6 |
| C31 | 133.0 | 126.1 | 129.0 | 126.9 | 132.1 | 130.5 | 134.3 | 138.5 | 131.0 | 123.5 | 133.9 | 128.5 | 131.2 |
| C32 | 172.6 | 181.6 | 186.8 | 206.5 | 222.3 | 200.4 | 214.3 | 195.9 | 205.7 | 207.2 | 188.4 | 216.1 | 217.4 |
| C33 | 79.9 | 93.1 | 97.3 | 82.7 | 90.0 | 77.6 | 76.0 | 83.9 | 87.6 | 83.4 | 89.1 | 82.0 | 94.6 |
| D | 101.8 | 101.0 | 99.5 | 102.0 | 105.3 | 102.1 | 101.9 | 103.6 | 106.7 | 107.2 | 103.9 | 104.6 | 102.6 |
| D35 | 101.8 | 101.0 | 99.5 | 102.0 | 105.3 | 102.1 | 101.9 | 103.6 | 106.7 | 107.2 | 103.9 | 104.6 | 102.6 |

¹ ".." - Confidential data.



Table 4

Industrial Production Indices¹
(Working day adjusted, 2010 = 100)

| NACE.BG - 2008 | 2013 | 2014 | 2015 | | | | 2016 | | | | | | | | |
|-----------------|--------------|--------------|--------------|--------------|--------------|--------------|--------------|--------------|--------------|--------------|--------------|--------------|--------------|--------------|--------------|
| | IX | IX | IX | X | XI | XII | I | II | III | IV | V | VI | VII | VIII | IX |
| B_TO_E36 | 107.7 | 108.3 | 109.2 | 114.6 | 118.0 | 116.1 | 108.2 | 106.5 | 112.4 | 109.9 | 103.7 | 115.9 | 116.3 | 109.2 | 112.9 |
| B | 102.5 | 96.3 | 105.2 | 101.3 | 108.2 | 109.8 | 103.5 | 95.6 | 95.4 | 94.8 | 89.9 | 93.2 | 98.0 | 96.6 | 103.2 |
| B05 | 106.6 | 105.5 | 132.9 | 117.6 | 118.0 | 136.8 | 128.0 | 98.7 | 71.1 | 77.4 | 81.9 | 69.9 | 92.2 | 89.4 | 99.9 |
| B06 | .. | .. | .. | .. | .. | .. | .. | .. | .. | .. | .. | .. | .. | .. | .. |
| B07 | 98.8 | 88.0 | 88.2 | 88.4 | 97.4 | 87.1 | 93.6 | 89.3 | 104.0 | 103.5 | 91.5 | 102.8 | 99.8 | 96.2 | 103.4 |
| B08 | 117.5 | 126.7 | 123.9 | 142.1 | 121.2 | 135.1 | 59.9 | 86.7 | 101.9 | 107.7 | 110.0 | 114.4 | 120.9 | 123.0 | 106.8 |
| B09 | .. | .. | .. | .. | .. | .. | .. | .. | .. | .. | .. | .. | .. | .. | .. |
| C | 109.4 | 115.5 | 116.3 | 123.6 | 123.8 | 114.7 | 103.1 | 107.8 | 117.0 | 118.2 | 111.5 | 127.7 | 126.0 | 115.7 | 121.8 |
| C10 | 98.6 | 96.9 | 95.0 | 100.3 | 96.5 | 92.9 | 78.9 | 78.9 | 87.7 | 89.0 | 89.8 | 93.6 | 93.2 | 97.4 | 94.9 |
| C11 | 116.6 | 101.4 | 105.9 | 86.0 | 89.1 | 100.3 | 66.6 | 74.4 | 95.6 | 114.1 | 101.7 | 126.9 | 137.0 | 135.9 | 111.3 |
| C12 | 126.7 | 124.1 | 88.9 | 90.9 | 97.3 | 109.3 | 85.0 | 84.2 | 89.4 | 60.1 | 51.5 | 71.5 | 94.1 | 72.6 | 68.3 |
| C13 | 101.5 | 108.6 | 105.3 | 119.7 | 113.8 | 94.4 | 95.2 | 113.9 | 126.1 | 130.4 | 133.2 | 123.1 | 111.4 | 83.6 | 102.9 |
| C14 | 94.4 | 93.0 | 92.8 | 103.8 | 98.2 | 100.5 | 104.8 | 95.5 | 93.5 | 92.3 | 88.2 | 107.8 | 117.3 | 91.2 | 97.7 |
| C15 | 85.4 | 84.9 | 86.5 | 76.8 | 71.5 | 68.4 | 74.9 | 71.9 | 73.3 | 68.7 | 58.5 | 73.8 | 86.6 | 64.4 | 82.7 |
| C16 | 106.7 | 98.8 | 103.9 | 107.8 | 112.5 | 99.0 | 75.1 | 87.4 | 97.1 | 92.5 | 89.0 | 98.4 | 96.2 | 90.5 | 88.7 |
| C17 | 117.9 | 121.6 | 134.6 | 137.9 | 134.6 | 118.0 | 109.4 | 120.0 | 132.3 | 131.5 | 130.1 | 139.2 | 134.9 | 131.5 | 129.3 |
| C18 | 107.2 | 108.1 | 113.5 | 123.1 | 149.2 | 129.6 | 112.9 | 118.7 | 120.1 | 113.8 | 106.4 | 117.9 | 116.6 | 108.2 | 113.8 |
| C19 | .. | .. | .. | .. | .. | .. | .. | .. | .. | .. | .. | .. | .. | .. | .. |
| C20 | 86.5 | 112.3 | 112.3 | 113.8 | 104.0 | 96.3 | 97.0 | 106.3 | 110.8 | 111.3 | 109.4 | 109.7 | 125.5 | 116.9 | 118.6 |
| C21 | 141.2 | 135.1 | 145.7 | 160.1 | 155.1 | 155.2 | 136.5 | 160.6 | 160.3 | 152.1 | 133.4 | 153.3 | 131.6 | 118.8 | 121.8 |
| C22 | 125.3 | 137.1 | 139.9 | 150.4 | 138.1 | 115.5 | 120.8 | 128.5 | 144.3 | 148.7 | 138.9 | 156.5 | 156.0 | 142.4 | 147.0 |
| C23 | 122.9 | 121.4 | 140.5 | 141.7 | 143.0 | 123.3 | 89.7 | 103.3 | 126.0 | 132.9 | 127.3 | 134.9 | 130.6 | 131.0 | 130.3 |
| C24 | 93.8 | 93.8 | 76.7 | 103.4 | 98.2 | 70.9 | 93.9 | 84.2 | 82.0 | 99.9 | 80.4 | 79.6 | 115.6 | 89.2 | 91.7 |
| C25 | 106.6 | 136.2 | 132.9 | 144.1 | 165.6 | 165.9 | 135.8 | 133.8 | 152.3 | 149.5 | 124.7 | 199.2 | 153.1 | 150.4 | 186.0 |
| C26 | 121.8 | 137.1 | 139.8 | 158.6 | 153.7 | 150.0 | 139.7 | 129.6 | 148.5 | 150.3 | 150.2 | 160.6 | 160.1 | 137.8 | 155.7 |
| C27 | 122.3 | 129.3 | 144.5 | 162.7 | 162.6 | 130.2 | 135.7 | 149.3 | 163.3 | 142.7 | 138.7 | 157.0 | 160.7 | 129.3 | 147.3 |
| C28 | 138.6 | 151.8 | 141.7 | 143.8 | 143.4 | 129.3 | 125.4 | 135.4 | 151.4 | 139.8 | 133.0 | 157.6 | 158.3 | 127.8 | 136.0 |
| C29 | 112.5 | 147.2 | 167.0 | 174.6 | 173.3 | 139.8 | 153.7 | 173.5 | 187.4 | 175.0 | 176.2 | 182.9 | 166.0 | 148.0 | 169.2 |
| C30 | 63.6 | 63.2 | 97.2 | 101.1 | 96.9 | 103.7 | 72.0 | 96.2 | 113.7 | 112.8 | 99.7 | 86.8 | 82.4 | 86.8 | 77.5 |
| C31 | 125.6 | 130.1 | 141.2 | 139.5 | 141.6 | 127.3 | 112.9 | 115.5 | 129.9 | 135.7 | 128.4 | 124.1 | 138.9 | 129.3 | 139.2 |
| C32 | 149.8 | 162.4 | 182.4 | 210.9 | 195.7 | 178.3 | 188.4 | 171.2 | 217.5 | 189.7 | 206.3 | 236.0 | 190.3 | 221.9 | 230.6 |
| C33 | 80.2 | 99.2 | 81.6 | 99.4 | 114.3 | 111.3 | 64.8 | 65.4 | 74.1 | 74.7 | 81.3 | 83.9 | 89.4 | 80.4 | 98.7 |
| D | 103.5 | 92.3 | 90.0 | 95.5 | 108.2 | 128.7 | 127.5 | 112.5 | 110.4 | 93.7 | 87.6 | 92.5 | 94.8 | 95.1 | 90.4 |
| D35 | 103.5 | 92.3 | 90.0 | 95.5 | 108.2 | 128.7 | 127.5 | 112.5 | 110.4 | 93.7 | 87.6 | 92.5 | 94.8 | 95.1 | 90.4 |