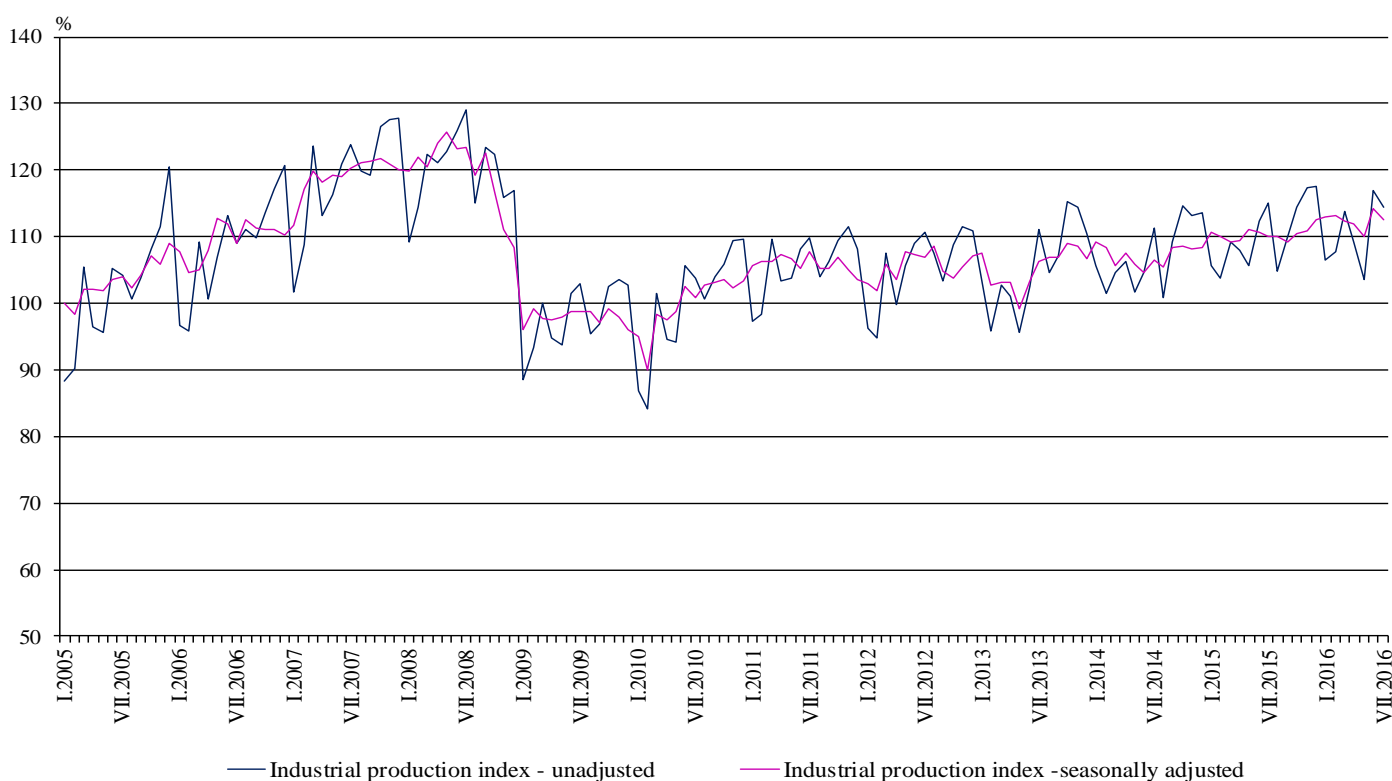


INDUSTRIAL PRODUCTION INDICES IN JULY 2016¹

According to the preliminary data the Industrial Production Index², seasonally adjusted³, decreased by 1.6% in July 2016 as compared to June 2016.

In July 2016 working day adjusted⁴ Industrial Production Index rose by 2.3% in comparison with the same month of 2015.

Figure 1. Industrial Production Indices (2010 = 100)



¹ July 2016 data are preliminary.

² Monthly Industrial Production and Industrial turnover indices measure changes in production and turnover values of industrial enterprises. This information can be used to assess the current economic development and for short-term forecasts. Indices do not measure the actual production level, it aims to measure the average change in value of production between two points of time. Indices are compiled on the base of information collected through representative sampling survey on industrial enterprises. The sample covers enterprises with annual turnover more than 97% of total turnover in industry.

Industrial production indices are calculated at constant base year that is to say they are weighted with the structure of the value added at factor costs in the base year.

³ Seasonal adjustment is a statistical method, which eliminates the seasonal component of time series.

⁴ Working day adjustment is an adjustment for variations caused by calendar effects, different number of calendar and working days in the months, national holidays and outliers (for example the presence of more non-working days in May could contribute to the decline in the production in some activities).

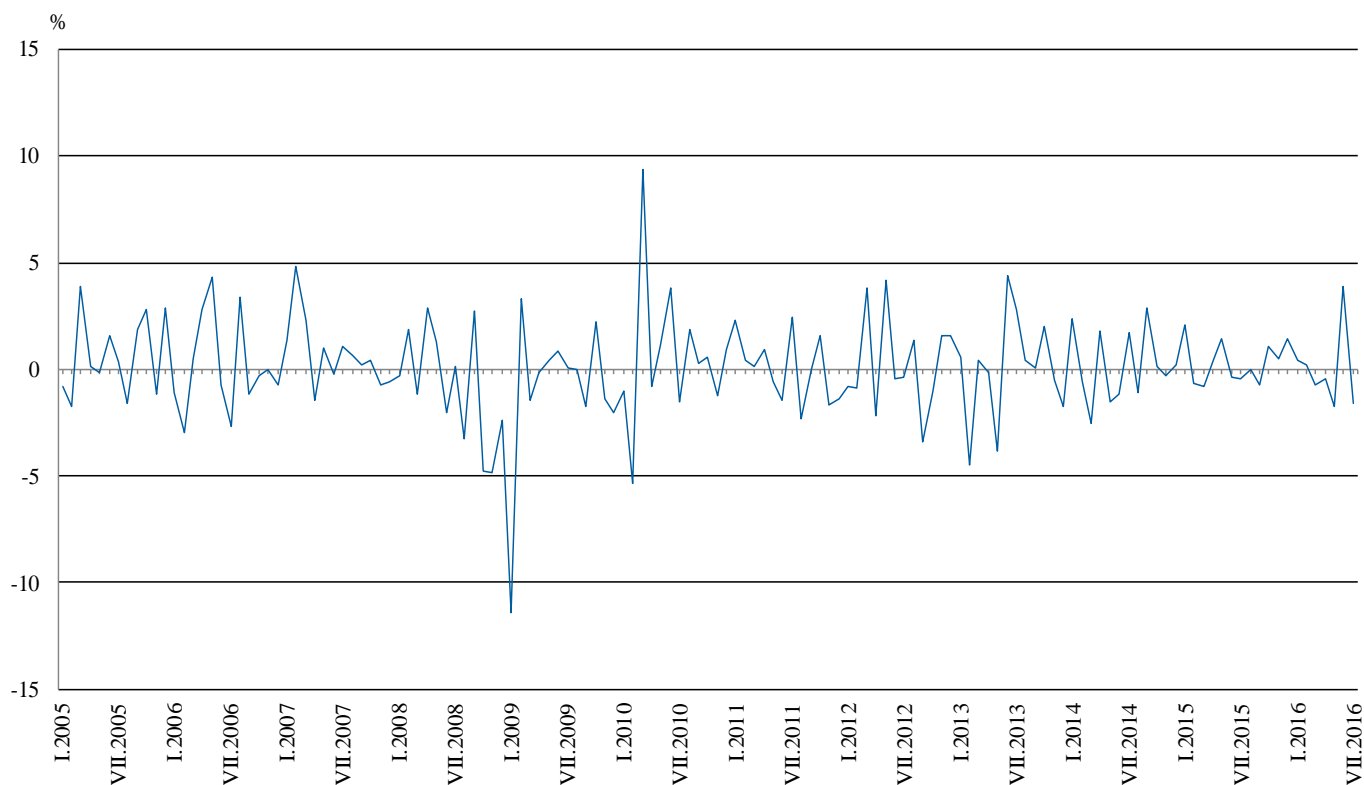


Monthly comparisons

In July 2016 as compared to June 2016, the seasonally adjusted Industrial Production Index decreased in the electricity, gas, steam and air conditioning supply by 2.8% and in the manufacturing by 1.7%, while in the mining and quarrying industry an increase by 0.5% was seen.

The most significant decreases of production in the manufacturing were registered in the manufacture of fabricated metal products, except machinery and equipment by 18.2%, in the manufacture of basic pharmaceutical products and pharmaceutical preparations by 3.8%, in the manufacture of wood and of products of wood and cork, except furniture; manufacture of articles of straw and plaiting materials and in the manufacture of paper and paper products by 3.5%, in the manufacture of motor vehicles, trailers and semi-trailers by 3.4%. There were increases in the manufacture of tobacco products by 19.1%, in the manufacture of chemicals and chemical products by 16.7%, in the manufacture of furniture by 8.3%, in the repair and installation of machinery and equipment by 6.6%.

**Figure 2. Changes of Industrial Production Indices compared to the previous month
(Seasonally adjusted)**



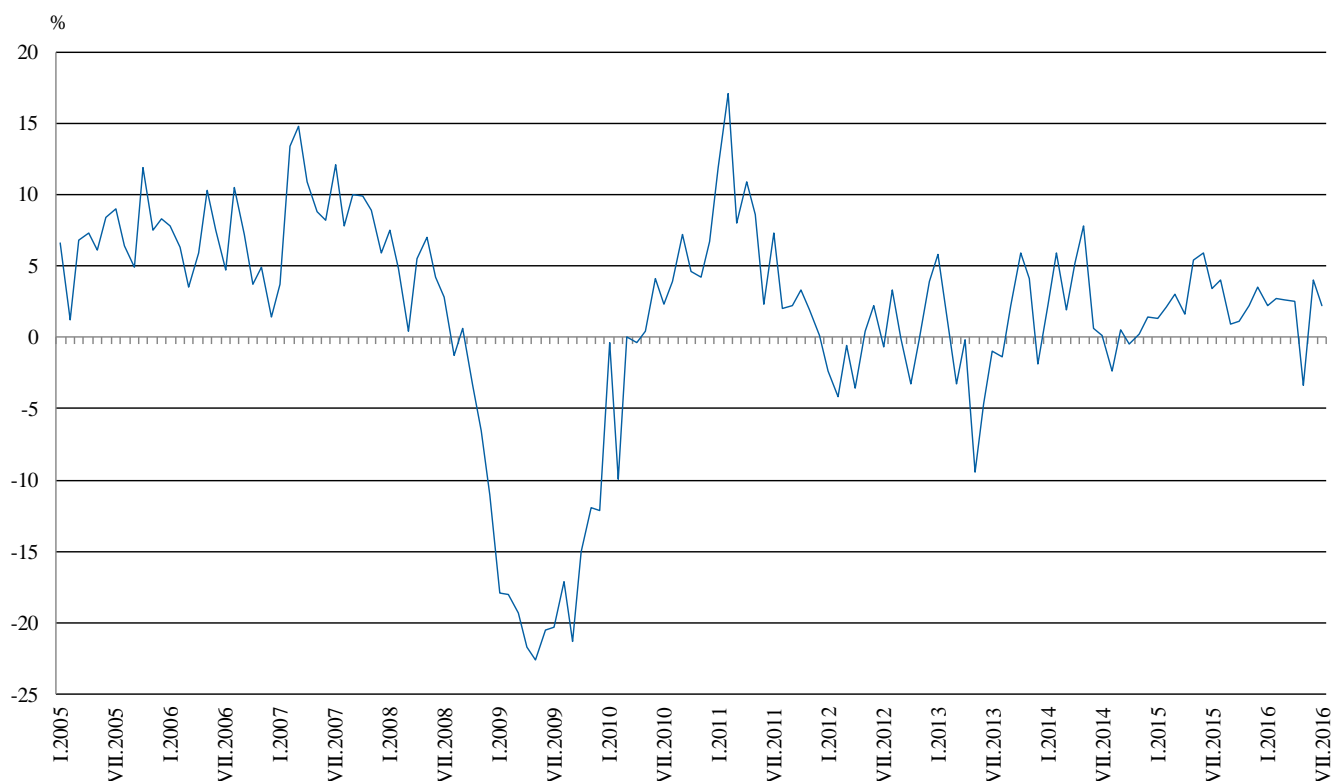


Annual comparisons

On annual basis in July 2016 Industrial Production Index calculated from working day adjusted data increased in the manufacturing by 2.6%, while decreases were registered in the electricity, gas, steam and air conditioning supply by 0.5% and in the mining and quarrying industry by 0.1%.

In the manufacturing, the more significant increases compared to the same month of the previous year were seen in the manufacture of fabricated metal products, except machinery and equipment by 15.9%, in the manufacture of beverages by 10.9%, in the manufacture of paper and paper products by 8.0%, in the manufacture of rubber and plastic products by 7.8%. Decreases were registered in the manufacture of leather and related products by 12.6%, in the manufacture of tobacco products by 12.0%, in the manufacture of other non-metallic mineral products by 7.3%, in the manufacture of other transport equipment by 6.4%.

Figure 3. Changes of Industrial Production Indices compared to the same month of the previous year (Working day adjusted)



The final data on Industrial Production and Turnover Indices for June 2016 can be found on the NSI website: <http://www.nsi.bg/en>.

Annex

Table 1
Changes of Industrial Production Indices compared to the previous month^{1, 2}
(Per cent)

Economic Activities	NACE.BG - 2008	2016					
		II	III	IV	V	VI	VII
Industry	B_TO_E36	0.2	-0.7	-0.4	-1.7	3.9	-1.6
Mining and quarrying	B	-1.2	-0.2	-0.8	-1.5	0.2	0.5
Mining of coal and lignite	B05	-10.2	-15.0	10.1	5.2	-5.1	6.1
Extraction of crude petroleum and natural gas	B06
Mining of metal ores	B07	-4.6	16.5	-0.5	-11.5	12.2	-2.9
Other mining and quarrying	B08	22.9	-6.5	-4.8	-3.0	-0.7	0.9
Mining support service activities	B09
Manufacturing	C	1.3	-1.0	-1.0	-3.1	5.4	-1.7
Manufacture of food products	C10	-3.1	-1.3	3.0	0.4	-0.9	0.1
Manufacture of beverages	C11	2.0	-3.7	5.6	-13.7	10.5	5.5
Manufacture of tobacco products	C12	-4.3	-17.0	-23.4	-18.5	20.1	19.1
Manufacture of textiles	C13	6.5	-3.7	3.4	-1.1	-5.0	-3.0
Manufacture of wearing apparel	C14	-1.8	1.7	-1.3	-1.6	3.2	1.0
Manufacture of leather and related products	C15	0.8	1.4	3.5	-8.4	1.0	-1.8
Manufacture of wood and of products of wood and cork, except furniture; manufacture of articles of straw and plaiting materials	C16	7.7	-4.1	-4.9	-5.0	0.3	-3.5
Manufacture of paper and paper products	C17	8.2	1.0	0.7	-0.9	3.7	-3.5
Printing and reproduction of recorded media	C18	-0.1	-5.6	-4.3	-5.8	4.3	1.8
Manufacture of coke and refined petroleum products	C19
Manufacture of chemicals and chemical products	C20	8.7	-10.7	6.0	1.7	-3.2	16.7
Manufacture of basic pharmaceutical products and pharmaceutical preparations	C21	4.8	-3.2	-5.0	-4.5	6.1	-3.8
Manufacture of rubber and plastic products	C22	2.5	-0.9	1.4	-6.1	3.9	-1.0
Manufacture of other non-metallic mineral products	C23	-1.0	-0.6	-2.3	-4.5	1.8	-1.8
Manufacture of basic metals	C24	-2.7	-0.4	-2.3	-4.2	3.4	3.9
Manufacture of fabricated metal products, except machinery and equipment	C25	-12.7	1.8	-0.4	-13.0	36.4	-18.2
Manufacture of computer, electronic and optical products	C26	-9.8	2.0	5.6	-2.2	2.5	1.4
Manufacture of electrical equipment	C27	5.1	0.3	-7.6	-0.1	4.7	-0.3
Manufacture of machinery and equipment n.e.c.	C28	-0.4	0.8	-3.1	-1.5	7.1	2.4
Manufacture of motor vehicles, trailers and semi-trailers	C29	11.6	-0.6	-3.6	3.7	-2.4	-3.4
Manufacture of other transport equipment	C30	12.8	-2.0	1.8	-18.0	-3.0	0.0
Manufacture of furniture	C31	-1.2	2.9	3.1	-5.4	-5.7	8.3
Other manufacturing	C32	-9.8	6.9	-8.6	5.0	0.7	-9.5
Repair and installation of machinery and equipment	C33	-13.7	-2.0	10.4	4.4	-4.7	6.6
Electricity, gas, steam and air conditioning supply	D	-3.0	-0.2	1.6	3.1	0.4	-2.8
Electricity, gas, steam and air conditioning supply	D35	-3.0	-0.2	1.6	3.1	0.4	-2.8

¹ Seasonally adjusted.

² ".." - Confidential data.

Table 2

Changes of Industrial Production Indices compared to the same month of the previous year^{1, 2}
(Per cent)

Economic Activities	NACE.BG - 2008	2016					
		II	III	IV	V	VI	VII
Industry	B_TO_E36	2.7	2.6	2.6	-3.4	4.0	2.3
Mining and quarrying	B	2.2	6.9	2.4	-4.4	-3.9	-0.1
Mining of coal and lignite	B05	-13.5	-24.5	-25.8	-9.3	-16.2	-13.4
Extraction of crude petroleum and natural gas	B06
Mining of metal ores	B07	4.7	20.5	22.8	-3.3	3.0	13.0
Other mining and quarrying	B08	14.8	5.6	-2.0	-6.7	-13.4	-11.8
Mining support service activities	B09
Manufacturing	C	6.3	5.2	5.0	-3.8	5.6	2.6
Manufacture of food products	C10	-4.9	2.7	1.3	0.5	2.5	6.5
Manufacture of beverages	C11	5.1	5.4	11.5	-10.9	2.8	10.9
Manufacture of tobacco products	C12	-1.4	-22.0	-42.4	-50.8	-32.6	-12.0
Manufacture of textiles	C13	18.9	14.7	15.7	7.3	2.1	-3.7
Manufacture of wearing apparel	C14	6.1	12.0	8.0	2.2	2.4	5.6
Manufacture of leather and related products	C15	-5.3	0.0	-2.4	-1.3	-3.1	-12.6
Manufacture of wood and of products of wood and cork, except furniture; manufacture of articles of straw and plaiting materials	C16	-1.8	-5.0	-7.5	-7.7	-7.2	-5.3
Manufacture of paper and paper products	C17	9.4	2.7	13.1	4.6	5.8	8.0
Printing and reproduction of recorded media	C18	15.5	8.3	7.5	-2.0	-1.5	4.2
Manufacture of coke and refined petroleum products	C19
Manufacture of chemicals and chemical products	C20	11.2	1.4	1.3	6.8	-6.7	0.4
Manufacture of basic pharmaceutical products and pharmaceutical preparations	C21	19.6	1.2	-4.5	-9.2	3.1	-5.6
Manufacture of rubber and plastic products	C22	11.5	14.2	12.3	0.2	8.2	7.8
Manufacture of other non-metallic mineral products	C23	11.3	6.0	5.8	-11.3	-4.0	-7.3
Manufacture of basic metals	C24	-16.1	-8.8	-17.9	-23.5	-14.0	-2.8
Manufacture of fabricated metal products, except machinery and equipment	C25	17.7	34.3	37.9	0.0	59.0	15.9
Manufacture of computer, electronic and optical products	C26	-6.6	0.2	4.1	-0.2	0.7	3.3
Manufacture of electrical equipment	C27	12.2	10.3	0.3	-6.6	10.8	2.2
Manufacture of machinery and equipment n.e.c.	C28	-4.0	2.7	-3.7	-8.7	0.5	5.6
Manufacture of motor vehicles, trailers and semi-trailers	C29	13.8	14.5	9.8	18.1	9.6	2.3
Manufacture of other transport equipment	C30	20.6	12.1	29.3	-13.8	-3.9	-6.4
Manufacture of furniture	C31	1.4	13.7	7.4	3.8	-0.5	6.6
Other manufacturing	C32	31.8	37.2	20.1	21.9	19.3	0.9
Repair and installation of machinery and equipment	C33	-14.0	-23.2	0.0	-5.8	-9.4	-3.7
Electricity, gas, steam and air conditioning supply	D	-4.4	-5.6	-6.8	-0.7	1.6	-0.5
Electricity, gas, steam and air conditioning supply	D35	-4.4	-5.6	-6.8	-0.7	1.6	-0.5

¹ Working day adjusted.

² ".." - Confidential data.

Table 3

Industrial Production Indices¹
(Seasonally adjusted, 2010 = 100)

NACE.BG - 2008	2015						2016						
	VII	VIII	IX	X	XI	XII	I	II	III	IV	V	VI	VII
B_TO_E36	110.1	110.1	109.2	110.4	110.9	112.5	113.0	113.2	112.4	111.9	110.0	114.2	112.4
B	99.1	98.6	100.3	97.1	100.1	100.3	102.2	101.0	100.8	100.1	98.5	98.7	99.2
B05	115.5	123.0	124.4	95.1	105.6	116.8	112.6	101.1	86.0	94.7	99.5	94.5	100.2
B06
B07	88.3	79.8	88.2	88.4	97.4	87.1	93.6	89.3	104.0	103.5	91.5	102.8	99.8
B08	119.1	109.9	111.7	119.1	108.8	129.4	99.2	122.0	114.0	108.5	105.3	104.6	105.5
B09
C	114.3	113.8	113.6	116.2	117.0	118.6	117.9	119.4	118.2	117.1	113.5	119.7	117.7
C10	86.1	87.7	88.1	90.8	89.6	89.0	93.5	90.5	89.4	92.1	92.5	91.6	91.8
C11	100.5	101.0	98.3	99.6	100.4	97.7	104.7	106.8	102.8	108.5	93.6	103.5	109.2
C12	89.2	89.2	82.1	92.7	100.9	107.4	110.9	106.2	88.2	67.6	55.1	66.2	78.8
C13	110.5	106.9	108.8	116.4	110.5	108.7	111.3	118.6	114.2	118.2	116.9	111.0	107.7
C14	96.7	92.4	96.6	103.0	97.5	100.7	100.1	98.4	100.0	98.7	97.1	100.2	101.3
C15	80.4	77.8	78.4	73.5	70.7	73.7	73.7	74.4	75.4	78.1	71.5	72.2	70.9
C16	91.8	96.7	96.7	96.6	103.4	103.6	96.5	104.0	99.7	94.8	90.1	90.4	87.2
C17	118.2	119.3	132.5	136.2	135.0	123.1	117.6	127.3	128.6	129.4	128.3	133.0	128.3
C18	112.5	111.9	111.5	115.6	132.7	116.5	130.3	130.2	122.9	117.7	110.9	115.7	117.8
C19
C20	123.5	124.2	111.9	114.9	100.8	98.3	104.5	113.5	101.3	107.4	109.2	105.7	123.3
C21	147.1	143.0	145.6	148.5	150.5	151.5	151.4	158.6	153.5	145.9	139.3	147.7	142.1
C22	131.2	127.6	131.1	134.9	132.5	135.2	142.9	146.5	145.2	147.2	138.3	143.6	142.2
C23	129.3	127.6	128.4	128.5	132.8	138.2	130.9	129.6	128.8	125.9	120.3	122.5	120.3
C24	97.2	95.3	91.1	92.3	92.5	93.1	90.5	88.0	87.6	85.6	82.0	84.8	88.1
C25	127.8	128.8	129.1	135.4	148.7	147.6	174.7	152.5	155.2	154.6	134.5	183.4	150.1
C26	150.3	148.8	139.1	154.6	145.9	136.8	156.3	141.0	143.9	152.0	148.7	152.4	154.5
C27	146.4	147.4	143.0	147.4	147.8	143.3	147.9	155.5	155.9	144.0	143.8	150.7	150.2
C28	142.4	141.5	139.0	139.8	135.6	138.2	141.5	140.9	142.0	137.6	135.5	145.1	148.6
C29	160.5	145.4	162.7	160.8	157.4	157.8	158.9	177.4	176.3	170.0	176.2	171.9	166.2
C30	85.0	101.1	106.7	104.0	104.3	98.8	93.6	105.6	103.5	105.3	86.4	83.8	83.8
C31	126.1	119.3	133.0	126.1	129.0	126.9	132.1	130.5	134.3	138.5	131.0	123.5	133.8
C32	183.4	180.1	172.6	181.6	186.8	206.5	222.3	200.4	214.3	195.9	205.7	207.2	187.5
C33	93.3	86.3	79.9	93.1	97.3	82.7	90.0	77.6	76.0	83.9	87.6	83.4	88.9
D	104.2	105.7	101.8	101.0	99.5	102.0	105.3	102.1	101.9	103.6	106.7	107.2	104.2
D35	104.2	105.7	101.8	101.0	99.5	102.0	105.3	102.1	101.9	103.6	106.7	107.2	104.2

¹ ".." - Confidential data.

Table 4

Industrial Production Indices¹
(Working day adjusted, 2010 = 100)

NACE.BG - 2008	2013	2014	2015						2016						
	VII	VII	VII	VIII	IX	X	XI	XII	I	II	III	IV	V	VI	VII
B_TO_E36	109.7	109.9	113.7	106.5	109.2	114.6	118.0	116.1	108.2	106.5	112.4	109.9	103.7	115.9	116.3
B	95.3	94.7	98.0	94.9	105.2	101.3	108.2	109.8	103.5	95.6	95.4	94.8	89.9	93.2	97.9
B05	73.4	80.6	106.6	121.9	132.9	117.6	118.0	136.8	128.0	98.7	71.1	77.4	81.9	69.9	92.2
B06
B07	102.7	97.4	88.3	79.8	88.2	88.4	97.4	87.1	93.6	89.3	104.0	103.5	91.5	102.8	99.8
B08	120.7	126.6	135.8	121.4	123.9	142.1	121.2	135.1	59.9	86.7	101.9	107.7	110.0	114.4	119.8
B09
C	113.7	118.2	122.6	110.9	116.3	123.6	123.8	114.7	103.1	107.8	117.0	118.2	111.5	127.7	125.8
C10	95.6	91.3	87.1	90.0	95.0	100.3	96.5	92.9	78.9	78.9	87.7	89.0	89.8	93.6	92.8
C11	121.7	117.6	124.3	127.6	105.9	86.0	89.1	100.3	66.6	74.4	95.6	114.1	101.7	126.9	137.8
C12	140.1	130.4	107.0	89.0	88.9	90.9	97.3	109.3	85.0	84.2	89.4	60.1	51.5	71.5	94.2
C13	100.8	115.3	117.2	86.0	105.3	119.7	113.8	94.4	95.2	113.9	126.1	130.4	133.2	123.1	112.9
C14	111.7	109.0	110.2	92.6	92.8	103.8	98.2	100.5	104.8	95.5	93.5	92.3	88.2	107.8	116.4
C15	91.0	92.3	98.4	79.9	86.5	76.8	71.5	68.4	74.9	71.9	73.3	68.7	58.5	73.8	86.0
C16	108.8	114.5	101.5	98.6	103.9	107.8	112.5	99.0	75.1	87.4	97.1	92.5	89.0	98.4	96.1
C17	130.5	128.2	123.7	118.6	134.6	137.9	134.6	118.0	109.4	120.0	132.3	131.5	130.1	139.2	133.6
C18	104.1	104.6	111.3	107.2	113.5	123.1	149.2	129.6	112.9	118.7	120.1	113.8	106.4	117.9	116.0
C19
C20	99.1	97.8	124.8	117.8	112.3	113.8	104.0	96.3	97.0	106.3	110.8	111.3	109.4	109.7	125.3
C21	125.3	128.8	139.7	127.1	145.7	160.1	155.1	155.2	136.5	160.6	160.3	152.1	133.4	153.3	131.9
C22	123.5	144.1	144.9	128.0	139.9	150.4	138.1	115.5	120.8	128.5	144.3	148.7	138.9	156.5	156.2
C23	116.6	125.6	141.1	135.2	140.5	141.7	143.0	123.3	89.7	103.3	126.0	132.9	127.3	134.9	130.7
C24	116.4	125.4	118.6	92.1	76.7	103.4	98.2	70.9	93.9	84.2	82.0	99.9	80.4	79.6	115.3
C25	115.9	125.4	133.6	125.0	132.9	144.1	165.6	165.9	135.8	133.8	152.3	149.5	124.7	199.2	154.8
C26	129.8	147.5	154.1	129.9	139.8	158.6	153.7	150.0	139.7	129.6	148.5	150.3	150.2	160.6	159.2
C27	126.8	131.4	155.5	129.9	144.5	162.7	162.6	130.2	135.7	149.3	163.3	142.7	138.7	157.0	159.0
C28	139.7	144.5	149.7	127.8	141.7	143.8	143.4	129.3	125.4	135.4	151.4	139.8	133.0	157.6	158.1
C29	113.5	137.7	162.2	119.6	167.0	174.6	173.3	139.8	153.7	173.5	187.4	175.0	176.2	182.9	166.0
C30	71.5	105.0	88.0	81.4	97.2	101.1	96.9	103.7	72.0	96.2	113.7	112.8	99.7	86.8	82.4
C31	117.1	129.3	129.9	121.3	141.2	139.5	141.6	127.3	112.9	115.5	129.9	135.7	128.4	124.1	138.4
C32	153.2	166.5	188.1	184.0	182.4	210.9	195.7	178.3	188.4	171.2	217.5	189.7	206.3	236.0	189.7
C33	71.5	87.2	92.4	85.3	81.6	99.4	114.3	111.3	64.8	65.4	74.1	74.7	81.3	83.9	89.0
D	106.3	93.9	95.5	96.3	90.0	95.5	108.2	128.7	127.5	112.5	110.4	93.7	87.6	92.5	95.1
D35	106.3	93.9	95.5	96.3	90.0	95.5	108.2	128.7	127.5	112.5	110.4	93.7	87.6	92.5	95.1

¹ "..." - Confidential data.