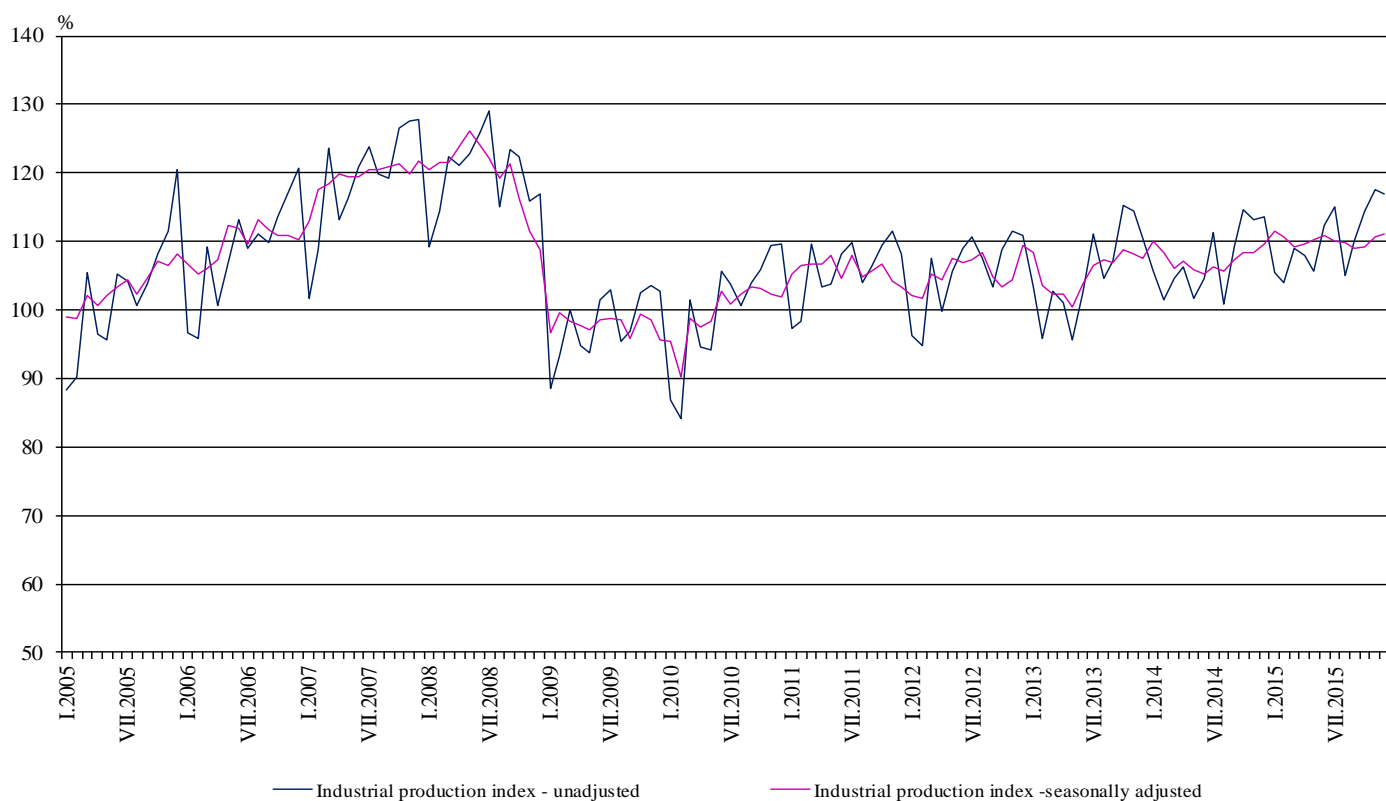


INDUSTRIAL PRODUCTION INDICES IN DECEMBER 2015¹

According to the preliminary data the Industrial Production Index², seasonally adjusted³, increased by 0.5% in December 2015 as compared to November 2015.

In December 2015 working day adjusted⁴ Industrial Production Index rose by 1.6% in comparison with the same month of 2014.

Figure 1. Industrial Production Indices (2010 = 100)



¹ December 2015 data are preliminary.

² Monthly Industrial Production and Industrial turnover indices measure changes in production and turnover values of industrial enterprises. This information can be used to assess the current economic development and for short-term forecasts. Indices do not measure the actual production level, it aims to measure the average change in value of production between two points of time. Indices are compiled on the base of information collected through representative sampling survey on industrial enterprises. The sample covers enterprises with annual turnover more than 97% of total turnover in industry.

Industrial production indices are calculated at constant base year that is to say they are weighted with the structure of the value added at factor costs in the base year.

³ Seasonal adjustment is a statistical method, which eliminates the seasonal component of time series.

⁴ Working day adjustment is an adjustment for variations caused by calendar effects, different number of calendar and working days in the months, national holidays and outliers (for example the presence of more non-working days in May could contribute to the decline in the production in some activities).

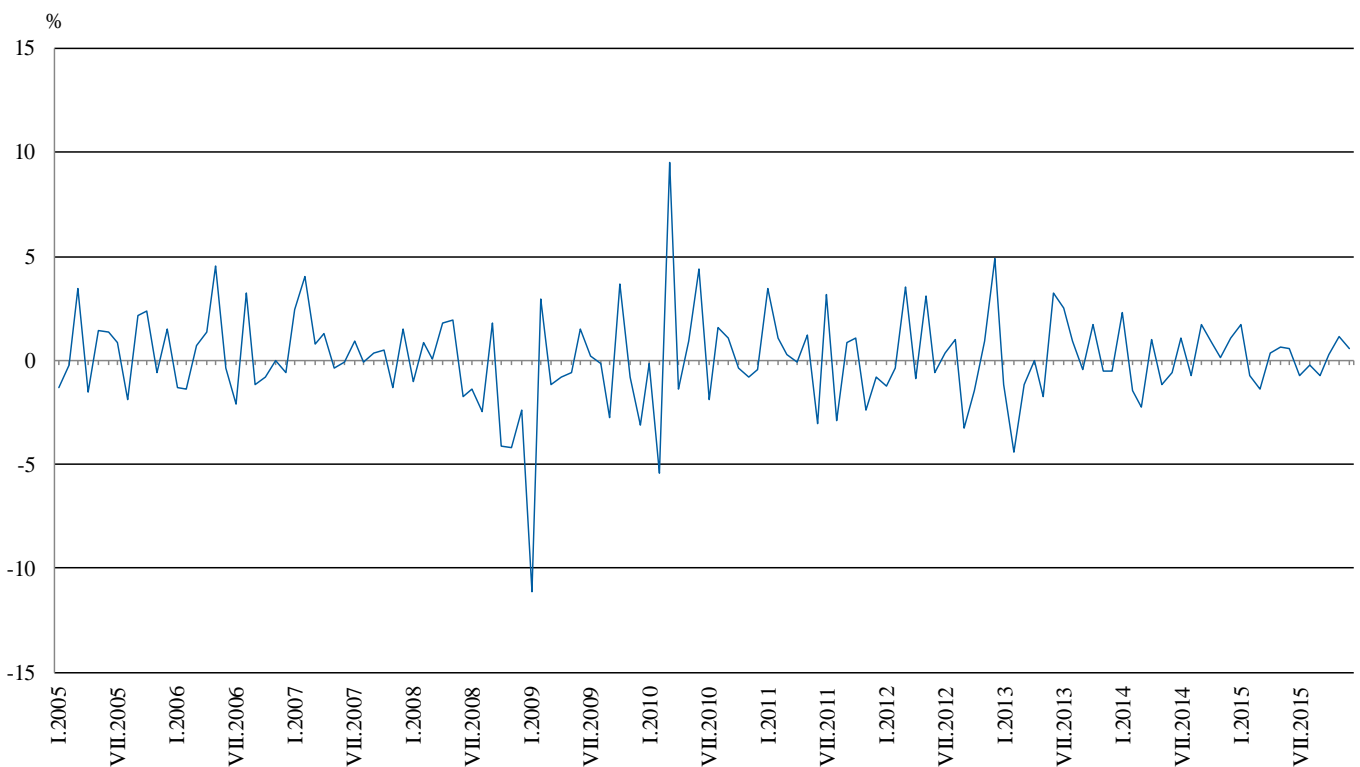


Monthly comparisons

In December 2015 as compared to November 2015, the seasonally adjusted Industrial Production Index increased in the electricity, gas, steam and air conditioning supply by 1.9%, in the mining and quarrying industry by 0.7% and in the manufacturing by 0.1%.

The most significant increases of production in the manufacturing were registered in the manufacture of other non-metallic mineral products by 3.7%, in the manufacture of leather and related products by 2.7%, in the manufacture of wood and of products of wood and cork, except furniture; manufacture of articles of straw and plaiting materials by 2.6%. There were decreases in the repair and installation of machinery and equipment by 15.6%, in the printing and reproduction of recorded media by 13.3%, in the manufacture of computer, electronic and optical products by 10.9%, in the manufacture of paper and paper products by 10.4%.

Figure 2. Changes of Industrial Production Indices compared to the previous month (Seasonally adjusted)



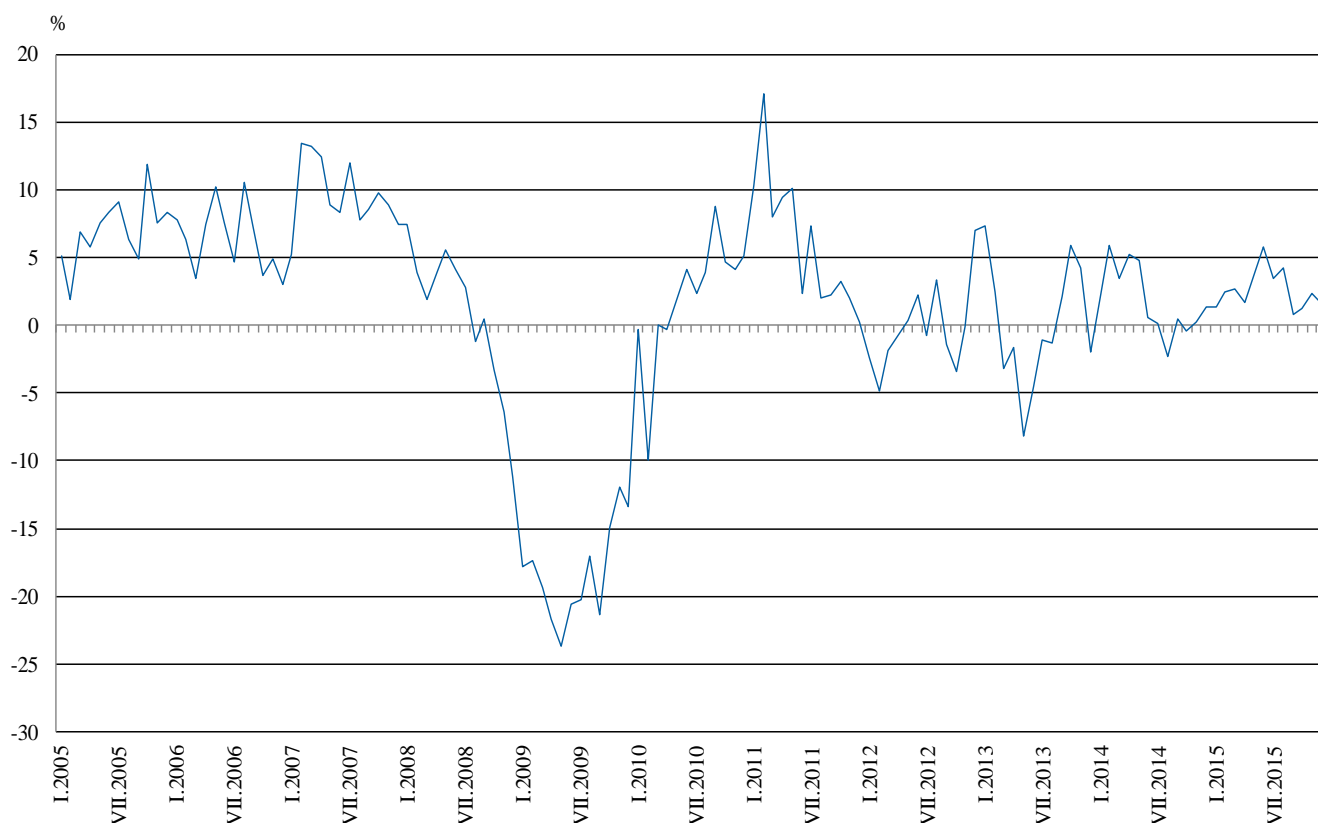


Annual comparisons

On annual basis in December 2015 Industrial Production Index calculated from working day adjusted data increased in the manufacturing by 4.5%, while decreases were registered in the electricity, gas, steam and air conditioning supply by 4.2% and in the mining and quarrying industry by 1.4%.

In the manufacturing, the more significant increases compared to the same month of the previous year were seen in the manufacture of fabricated metal products, except machinery and equipment by 18.1%, in the manufacture of other non-metallic mineral products by 16.2%, in the manufacture of other transport equipment by 14.4%, in the manufacture of electrical equipment by 11.2%. Decreases were registered in the manufacture of leather and related products by 13.2%, in the manufacture of chemicals and chemical products by 10.7%, in the manufacture of basic metals by 10.6%, in the manufacture of tobacco products by 10.5%.

Figure 3. Changes of Industrial Production Indices compared to the same month of the previous year (Working day adjusted)



The final data on Industrial Production and Turnover Indices for November 2015 can be found on the NSI website: <http://www.nsi.bg/en>.

Annex

Changes of Industrial Production Indices compared to the previous month¹

Table 1

(Per cent)

Economic Activities	NACE.BG - 2008	2015					
		VII	VIII	IX	X	XI	XII
Industry	B_TO_E36	-0.8	-0.2	-0.8	0.3	1.2	0.5
Mining and quarrying	B	-3.1	-0.6	3.1	-12.1	10.8	0.7
of which:							
Mining of coal and lignite	B05	8.5	5.2	0.9	-23.8	12.6	10.1
Mining of metal ores	B07	-12.1	-6.6	6.7	2.0	10.6	-7.9
Other mining and quarrying	B08	-0.4	-5.6	-1.1	7.4	-9.0	18.7
Manufacturing	C	-0.5	-0.4	-0.3	2.4	0.7	0.1
of which:							
Manufacture of food products	C10	-3.6	2.6	0.1	4.3	-1.3	-2.2
Manufacture of beverages	C11	2.2	-0.5	-4.4	2.6	0.5	-2.1
Manufacture of tobacco products	C12	-5.5	3.5	-11.3	16.2	6.2	0.9
Manufacture of textiles	C13	1.6	-2.9	0.9	8.1	-5.3	-4.5
Manufacture of wearing apparel	C14	-2.3	-3.1	4.8	5.3	-3.7	1.3
Manufacture of leather and related products	C15	8.0	-0.9	-0.8	-5.6	-2.9	2.7
Manufacture of wood and of products of wood and cork, except furniture; manufacture of articles of straw and plaiting materials	C16	-5.7	6.1	-1.5	-0.1	7.6	2.6
Manufacture of paper and paper products	C17	-6.4	2.7	10.5	6.0	-2.7	-10.4
Printing and reproduction of recorded media	C18	-4.2	-0.6	-1.5	4.8	14.7	-13.3
Manufacture of chemicals and chemical products	C20	6.8	1.6	-9.3	3.4	-12.5	-3.0
Manufacture of basic pharmaceutical products and pharmaceutical preparations	C21	3.6	-2.0	0.0	2.4	1.4	-0.3
Manufacture of rubber and plastic products	C22	-1.2	-2.8	1.1	3.4	-1.2	1.5
Manufacture of other non-metallic mineral products	C23	-0.6	-1.1	1.0	-1.1	4.1	3.7
Manufacture of basic metals	C24	2.3	-3.4	-8.2	5.1	1.0	-0.5
Manufacture of fabricated metal products, except machinery and equipment	C25	5.7	5.0	-3.3	7.2	10.0	-5.4
Manufacture of computer, electronic and optical products	C26	-1.0	-0.3	-8.3	13.3	-5.3	-10.9
Manufacture of electrical equipment	C27	7.7	1.0	-3.0	3.3	-0.3	-1.5
Manufacture of machinery and equipment n.e.c.	C28	-1.8	-0.8	-2.3	0.6	-3.4	-0.6
Manufacture of motor vehicles, trailers and semi-trailers	C29	2.0	-5.8	7.6	0.7	-2.4	-2.4
Manufacture of other transport equipment	C30	3.0	20.3	6.1	-3.1	-1.6	-6.9
Manufacture of furniture	C31	4.0	-4.8	10.7	-4.6	2.0	-3.5
Other manufacturing	C32	5.2	-0.3	-6.4	6.9	3.0	7.7
Repair and installation of machinery and equipment	C33	3.5	-7.7	-9.7	17.5	4.6	-15.6
Electricity, gas, steam and air conditioning supply	D	-1.0	0.4	-3.5	-1.0	-1.1	1.9
Electricity, gas, steam and air conditioning supply	D35	-1.0	0.4	-3.5	-1.0	-1.1	1.9

¹ Seasonally adjusted.



Table 2

Changes of Industrial Production Indices compared to the same month of the previous year¹
(Per cent)

Economic Activities	NACE.BG - 2008	2015					
		VII	VIII	IX	X	XI	XII
Industry	B_TO_E36	3.4	4.3	0.8	1.2	2.3	1.6
Mining and quarrying	B	3.6	0.0	9.1	-9.3	0.9	-1.4
of which:							
Mining of coal and lignite	B05	31.9	28.4	25.8	-12.4	2.3	11.0
Mining of metal ores	B07	-9.6	-14.0	0.2	-9.7	-4.1	-12.5
Other mining and quarrying	B08	7.8	-0.5	-2.1	3.8	-8.5	14.6
Manufacturing	C	3.6	4.2	0.6	4.7	5.4	4.5
of which:							
Manufacture of food products	C10	-5.6	-2.9	-1.9	1.0	-2.9	-4.1
Manufacture of beverages	C11	8.2	5.3	4.7	11.9	9.6	1.3
Manufacture of tobacco products	C12	-18.2	-12.4	-28.8	-18.8	-8.5	-10.5
Manufacture of textiles	C13	1.7	-3.0	-3.0	7.0	3.9	-8.0
Manufacture of wearing apparel	C14	1.3	-9.5	-0.1	11.1	3.6	7.6
Manufacture of leather and related products	C15	6.4	-0.7	3.1	-8.7	-21.0	-13.2
Manufacture of wood and of products of wood and cork, except furniture; manufacture of articles of straw and plaiting materials	C16	-10.6	-1.5	5.3	-3.4	10.6	11.1
Manufacture of paper and paper products	C17	-3.5	1.3	10.7	16.9	15.8	4.6
Printing and reproduction of recorded media	C18	6.8	15.3	5.0	8.3	24.1	6.5
Manufacture of chemicals and chemical products	C20	24.4	16.5	0.0	-10.6	-7.9	-10.7
Manufacture of basic pharmaceutical products and pharmaceutical preparations	C21	8.4	17.5	7.8	5.5	8.8	-1.3
Manufacture of rubber and plastic products	C22	2.0	1.6	2.0	4.3	6.1	9.4
Manufacture of other non-metallic mineral products	C23	12.2	9.9	15.4	12.1	14.5	16.2
Manufacture of basic metals	C24	-5.6	-8.4	-18.5	-10.5	0.2	-10.6
Manufacture of fabricated metal products, except machinery and equipment	C25	5.0	17.6	-2.4	16.2	23.2	18.1
Manufacture of computer, electronic and optical products	C26	1.8	15.2	0.2	7.8	7.7	-2.8
Manufacture of electrical equipment	C27	18.3	23.7	11.8	12.5	12.8	11.2
Manufacture of machinery and equipment n.e.c.	C28	3.7	2.2	-6.6	-1.9	-13.9	-2.8
Manufacture of motor vehicles, trailers and semi-trailers	C29	16.9	11.9	12.3	5.9	4.9	-1.0
Manufacture of other transport equipment	C30	-16.1	63.2	54.1	29.4	26.5	14.4
Manufacture of furniture	C31	0.5	-11.0	8.4	0.9	4.3	5.5
Other manufacturing	C32	12.9	19.0	12.4	28.7	25.7	38.5
Repair and installation of machinery and equipment	C33	8.5	-2.9	-17.5	8.9	-6.6	4.1
Electricity, gas, steam and air conditioning supply	D	2.3	6.2	-2.5	-6.2	-6.5	-4.2
Electricity, gas, steam and air conditioning supply	D35	2.3	6.2	-2.5	-6.2	-6.5	-4.2

¹ Working day adjusted.

Table 3

**Industrial Production Indices
(Seasonally adjusted, 2010 = 100)**

NACE.BG - 2008	2014	2015											
	XII	I	II	III	IV	V	VI	VII	VIII	IX	X	XI	XII
B_TO_E36	109.6	111.4	110.6	109.1	109.5	110.2	110.9	110.0	109.8	109.0	109.3	110.6	111.2
B	100.5	101.2	102.6	96.4	99.4	100.3	101.5	98.4	97.9	100.9	88.6	98.2	98.8
B05	104.0	116.8	116.1	105.6	119.0	105.8	107.9	117.1	123.2	124.2	94.6	106.5	117.3
B07	103.0	84.6	89.2	86.8	83.4	94.0	99.0	87.1	81.4	86.8	88.6	97.9	90.2
B08	114.2	108.1	105.7	108.4	109.6	111.6	119.1	118.7	112.0	110.8	119.0	108.2	128.5
C	112.5	113.4	113.5	112.2	111.3	113.2	114.5	113.9	113.5	113.1	115.8	116.6	116.8
C10	91.8	94.2	96.8	87.4	91.9	88.0	88.3	85.1	87.2	87.3	91.1	89.9	87.9
C11	95.9	100.8	102.0	97.0	100.7	99.0	100.1	102.3	101.8	97.4	99.9	100.4	98.3
C12	120.3	109.0	112.6	111.0	103.5	98.7	96.0	90.8	93.9	83.3	96.8	102.8	103.7
C13	114.7	111.6	100.9	99.4	102.2	105.4	108.3	110.0	106.8	107.8	116.5	110.3	105.3
C14	94.0	96.0	92.0	89.0	91.5	91.4	96.5	94.3	91.4	95.8	100.9	97.2	98.4
C15	85.4	80.8	76.3	75.8	81.5	71.0	74.2	80.1	79.4	78.7	74.3	72.2	74.1
C16	97.1	99.4	104.1	105.4	101.5	93.6	97.2	91.7	97.3	95.9	95.8	103.1	105.8
C17	117.0	120.6	118.6	123.4	111.1	118.1	124.2	116.3	119.4	132.0	139.9	136.1	122.0
C18	106.6	112.2	114.8	114.1	107.8	106.4	117.1	112.2	111.6	109.9	115.2	132.1	114.6
C20	108.9	112.8	101.7	100.8	106.4	99.3	113.3	121.0	122.9	111.5	115.2	100.8	97.8
C21	152.2	153.6	135.9	153.3	150.5	143.7	142.6	147.7	144.8	144.7	148.2	150.2	149.8
C22	123.3	136.8	135.3	129.3	132.4	131.5	134.0	132.4	128.7	130.1	134.4	132.9	134.8
C23	119.2	116.1	117.6	120.5	117.6	127.4	129.5	128.6	127.2	128.5	127.1	132.3	137.3
C24	104.8	107.6	103.3	98.6	108.9	101.6	97.8	100.1	96.6	88.7	93.2	94.1	93.6
C25	121.2	126.6	128.8	111.5	112.6	121.5	118.3	125.0	131.3	126.9	136.0	149.6	141.6
C26	128.6	135.1	147.8	141.5	143.2	143.4	148.4	146.9	146.4	134.2	152.0	143.9	128.2
C27	128.3	139.3	140.1	144.7	140.5	145.2	135.9	146.4	147.9	143.5	148.2	147.8	145.6
C28	137.0	153.6	148.8	140.3	142.3	142.5	146.0	143.4	142.2	138.9	139.7	135.0	134.2
C29	153.0	155.1	159.3	155.4	151.7	147.5	153.6	156.7	147.5	158.8	159.9	156.1	152.4
C30	81.5	118.8	93.5	92.6	83.4	94.9	81.6	84.1	101.1	107.3	103.9	102.3	95.2
C31	117.5	126.6	130.3	119.6	130.8	120.4	120.7	125.5	119.5	132.3	126.3	128.8	124.3
C32	147.3	176.1	152.6	158.0	160.0	163.3	172.4	181.3	180.7	169.2	180.9	186.3	200.7
C33	77.4	98.0	91.7	97.8	83.8	93.8	91.6	94.8	87.4	78.9	92.7	97.0	81.9
D	107.2	112.5	107.7	107.7	110.8	108.0	106.5	105.4	105.9	102.2	101.1	100.0	101.9
D35	107.2	112.5	107.7	107.7	110.8	108.0	106.5	105.4	105.9	102.2	101.1	100.0	101.9



Table 4

Industrial Production Indices
(Working day adjusted, 2010 = 100)

NACE.BG - 2008	2012	2013	2014	2015											
	XII	XII	XII	I	II	III	IV	V	VI	VII	VIII	IX	X	XI	XII
B_TO_E36	114.2	112.0	113.5	106.2	104.2	109.6	107.1	105.0	111.4	113.6	106.8	108.5	114.6	118.2	115.3
B	118.2	115.4	110.7	98.1	94.6	89.6	92.2	93.9	96.5	97.3	96.1	104.1	101.4	108.7	109.3
B05	129.0	145.6	124.8	132.4	114.8	94.3	105.4	88.7	83.9	107.4	120.8	132.9	117.5	118.2	138.6
B07	114.1	102.9	103.0	84.6	89.2	86.8	83.4	94.0	99.0	87.1	81.4	86.8	88.6	97.9	90.2
B08	110.0	88.3	116.1	68.3	73.4	97.0	109.2	117.4	131.2	135.2	125.1	122.5	141.7	120.1	133.0
C	102.5	102.8	108.5	99.1	102.1	111.3	112.4	112.6	120.7	122.2	111.5	115.1	123.5	123.9	113.3
C10	95.7	94.2	96.0	78.8	83.5	85.8	88.6	86.0	90.6	86.2	89.9	94.2	100.7	96.6	92.1
C11	92.4	107.4	101.5	63.4	69.9	91.4	102.0	111.0	122.9	126.7	129.8	104.8	86.2	89.7	102.9
C12	112.1	104.6	119.0	79.1	89.0	115.7	102.9	103.6	104.6	104.8	91.8	86.5	91.2	98.8	106.5
C13	91.4	84.5	100.4	97.4	95.8	111.4	112.5	117.6	120.0	116.3	86.9	102.9	120.0	114.4	92.4
C14	98.4	101.1	93.1	98.7	91.2	85.1	84.7	83.9	105.2	109.6	93.2	91.3	104.1	98.4	100.2
C15	66.2	66.8	79.5	81.5	73.3	74.0	69.9	59.3	76.3	97.0	81.7	86.3	77.4	73.7	69.0
C16	88.0	86.6	89.1	79.3	86.6	102.4	99.6	92.2	106.2	102.1	100.1	102.7	107.5	112.5	99.0
C17	104.1	111.2	110.4	113.3	110.7	129.3	114.0	121.0	131.3	123.4	119.1	133.6	139.0	134.8	115.5
C18	107.9	116.2	121.1	96.0	103.2	111.7	105.7	103.9	119.5	111.8	107.9	112.2	123.1	149.4	128.9
C20	94.3	96.2	107.5	105.0	94.9	110.6	110.7	99.5	117.9	121.7	116.2	111.3	114.0	103.9	96.0
C21	122.3	132.5	157.1	137.0	134.5	160.1	158.3	140.6	148.0	138.8	127.2	142.9	160.3	155.8	154.9
C22	87.8	101.7	105.8	115.2	117.9	127.6	132.2	132.1	146.1	146.7	129.2	137.7	150.1	138.5	115.7
C23	88.9	94.2	101.0	81.8	96.7	117.5	123.6	140.3	140.6	140.8	135.5	139.1	141.5	143.4	117.3
C24	68.4	73.7	79.5	112.6	102.8	89.8	122.0	105.2	92.4	118.9	91.9	76.8	103.4	98.1	71.1
C25	121.4	109.4	136.7	94.3	114.8	111.2	110.0	118.3	125.1	131.0	130.2	131.1	144.1	166.0	161.4
C26	132.6	122.4	147.5	119.4	136.0	147.0	140.3	144.0	155.4	149.0	128.3	134.3	155.4	152.7	143.3
C27	137.4	109.5	120.1	130.5	132.7	149.9	141.5	142.1	141.2	154.6	130.6	142.1	162.8	163.0	133.6
C28	120.1	141.4	129.5	135.4	143.0	148.6	144.8	139.6	156.8	149.8	127.9	140.1	143.7	143.2	125.8
C29	76.4	89.7	135.1	150.4	153.4	163.8	155.8	146.3	163.0	157.6	121.5	161.4	173.1	173.0	133.8
C30	103.4	80.5	85.4	95.1	86.0	101.4	87.8	116.1	90.5	88.3	81.1	97.5	101.0	94.3	97.8
C31	125.0	121.8	120.0	106.7	115.5	115.4	126.3	117.0	124.6	130.0	121.4	139.0	139.6	141.7	126.6
C32	110.2	114.5	125.8	147.1	130.9	160.1	156.9	164.0	196.5	186.3	186.3	179.1	211.2	196.5	174.2
C33	134.0	113.2	105.2	69.5	78.4	97.0	74.2	85.9	92.2	93.7	87.3	80.9	98.9	114.8	109.5
D	149.6	140.5	134.1	134.5	118.2	117.0	100.7	88.3	91.2	96.2	96.0	90.2	95.5	108.8	128.5
D35	149.6	140.5	134.1	134.5	118.2	117.0	100.7	88.3	91.2	96.2	96.0	90.2	95.5	108.8	128.5