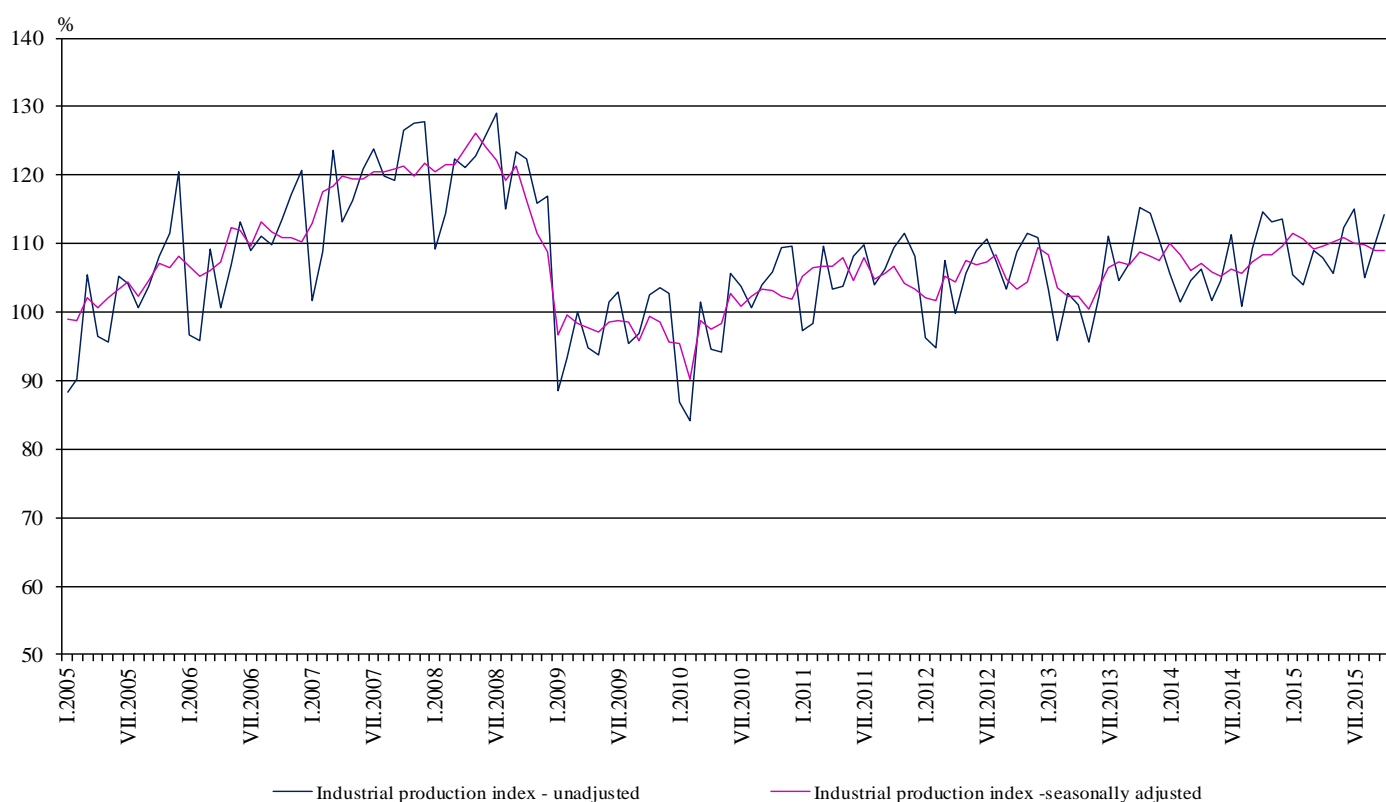


INDUSTRIAL PRODUCTION INDICES IN OCTOBER 2015¹

According to the preliminary data the Industrial Production Index², seasonally adjusted³, increased by 0.1% in October 2015 as compared to September 2015.

In October 2015 working day adjusted⁴ Industrial Production Index rose by 1.0% in comparison with the same month of 2014.

Figure 1. Industrial Production Indices (2010 = 100)



¹ October 2015 data are preliminary.

² Monthly Industrial Production and Industrial turnover indices measure changes in production and turnover values of industrial enterprises. This information can be used to assess the current economic development and for short-term forecasts. Indices do not measure the actual production level, it aims to measure the average change in value of production between two points of time. Indices are compiled on the base of information collected through representative sampling survey on industrial enterprises. The sample covers enterprises with annual turnover more than 97% of total turnover in industry.

Industrial production indices are calculated at constant base year that is to say they are weighted with the structure of the value added at factor costs in the base year.

³ Seasonal adjustment is a statistical method, which eliminates the seasonal component of time series.

⁴ Working day adjustment is an adjustment for variations caused by calendar effects, different number of calendar and working days in the months, national holidays and outliers (for example the presence of more non-working days in May could contribute to the decline in the production in some activities).

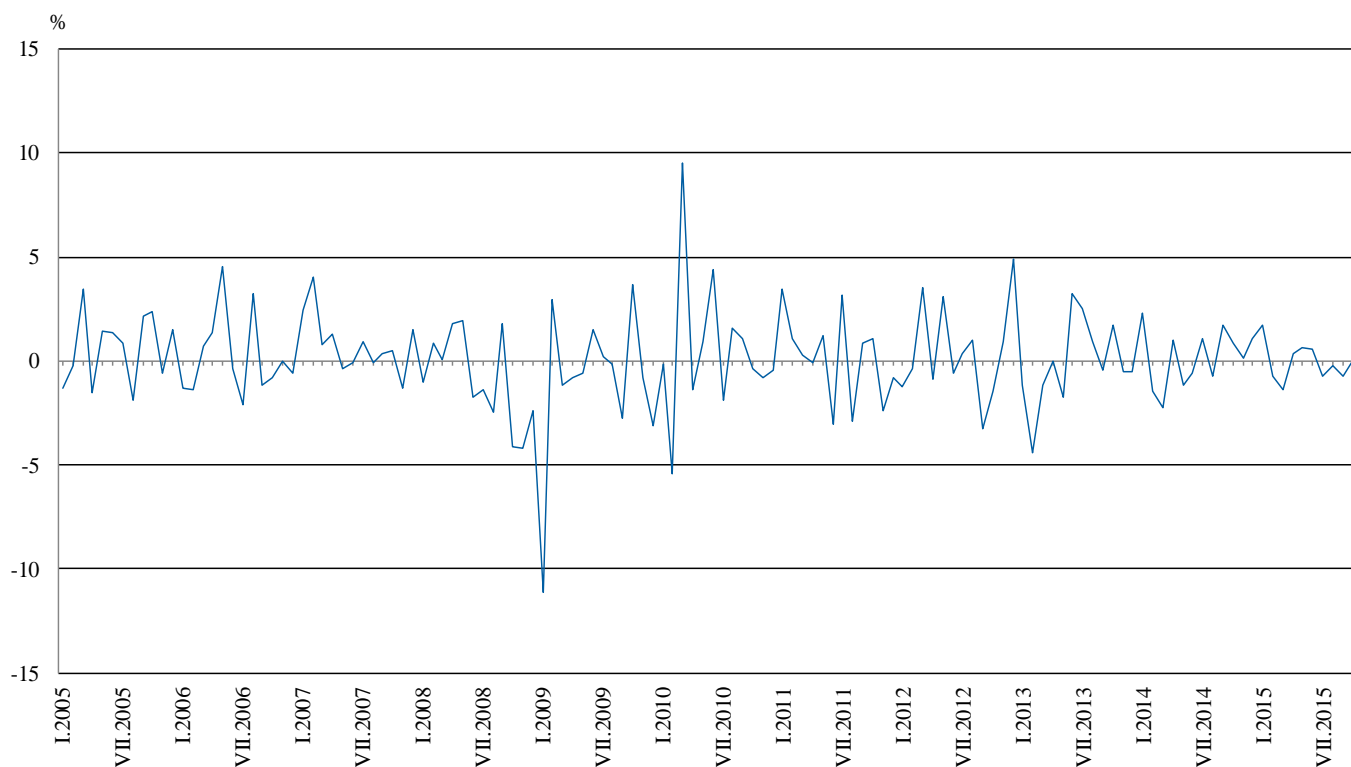


Monthly comparisons

In October 2015 as compared to September 2015, the seasonally adjusted Industrial Production Index increased in the manufacturing by 1.9%, while decreases were seen in the electricity, gas, steam and air conditioning supply by 0.6% and in the mining and quarrying industry by 12.3%.

The most significant increases of production in the manufacturing were registered in the repair and installation of machinery and equipment by 16.9%, in the manufacture of tobacco products by 15.9%, in the manufacture of computer, electronic and optical products by 13.3%, in the manufacture of fabricated metal products, except machinery and equipment by 5.7%. There were decreases in the manufacture of leather and related products by 5.2%, in the manufacture of furniture by 4.5%, in the manufacture of other transport equipment by 3.6%, in the manufacture of other non-metallic mineral products by 1.3%.

Figure 2. Changes of Industrial Production Indices compared to the previous month (Seasonally adjusted)



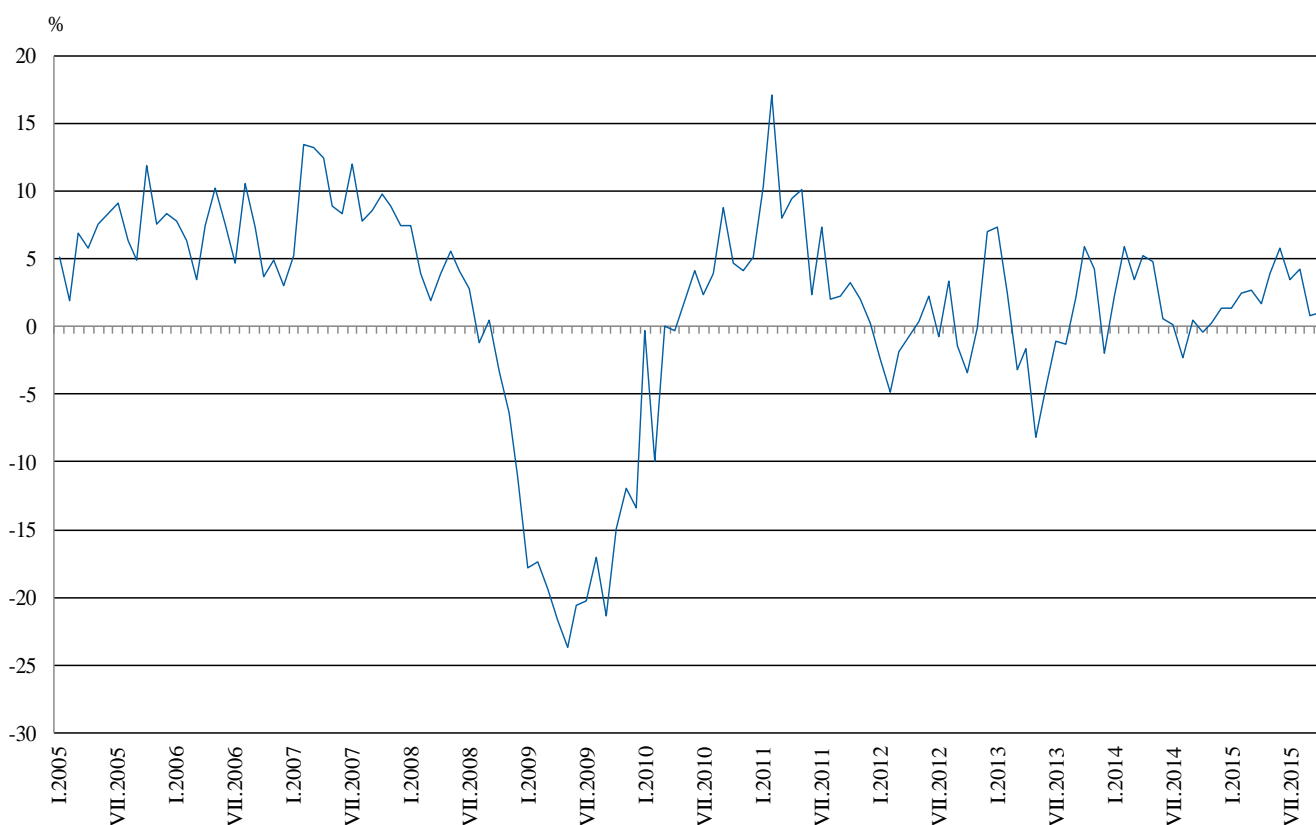


Annual comparisons

On annual basis in October 2015 Industrial Production Index calculated from working day adjusted data increased in the manufacturing by 4.4%, while decreases were registered in the electricity, gas, steam and air conditioning supply by 5.9% and in the mining and quarrying industry by 9.3%.

In the manufacturing, the more significant increases compared to the same month of the previous year were seen in the manufacture of other transport equipment by 29.4%, in the manufacture of paper and paper products by 16.1%, in the manufacture of fabricated metal products, except machinery and equipment by 14.9%, in the manufacture of other non-metallic mineral products by 12.2%. Decreases were registered in the manufacture of tobacco products by 18.8%, in the manufacture of basic metals and in the manufacture of chemicals and chemical products by 10.4%, in the manufacture of leather and related products by 8.6%.

Figure 3. Changes of Industrial Production Indices compared to the same month of the previous year (Working day adjusted)



The final data on Industrial Production and Turnover Indices for September 2015 can be found on the NSI website: <http://www.nsi.bg/en>.

Annex

Changes of Industrial Production Indices compared to the previous month¹

Table 1

(Per cent)

Economic Activities	NACE.BG - 2008	2015					
		V	VI	VII	VIII	IX	X
Industry	B_TO_E36	0.7	0.6	-0.8	-0.2	-0.8	0.1
Mining and quarrying	B	0.9	1.2	-3.1	-0.6	3.1	-12.3
of which:							
Mining of coal and lignite	B05	-11.1	1.9	8.5	5.2	0.9	-23.6
Mining of metal ores	B07	12.6	5.4	-12.1	-6.6	6.7	2.0
Other mining and quarrying	B08	1.9	6.7	-0.4	-5.6	-1.1	7.7
Manufacturing	C	1.7	1.2	-0.5	-0.4	-0.3	1.9
of which:							
Manufacture of food products	C10	-4.3	0.3	-3.6	2.6	0.1	4.2
Manufacture of beverages	C11	-1.7	1.1	2.2	-0.5	-4.4	-1.0
Manufacture of tobacco products	C12	-4.6	-2.7	-5.5	3.5	-11.3	15.9
Manufacture of textiles	C13	3.1	2.8	1.6	-2.9	0.9	8.4
Manufacture of wearing apparel	C14	0.0	5.6	-2.3	-3.1	4.8	5.6
Manufacture of leather and related products	C15	-12.8	4.4	8.0	-0.9	-0.8	-5.2
Manufacture of wood and of products of wood and cork, except furniture; manufacture of articles of straw and plaiting materials	C16	-7.8	3.9	-5.7	6.1	-1.5	-0.5
Manufacture of paper and paper products	C17	6.2	5.2	-6.4	2.7	10.5	5.6
Printing and reproduction of recorded media	C18	-1.3	10.0	-4.2	-0.6	-1.5	4.0
Manufacture of chemicals and chemical products	C20	-6.6	14.1	6.8	1.6	-9.3	3.8
Manufacture of basic pharmaceutical products and pharmaceutical preparations	C21	-4.5	-0.8	3.6	-2.0	0.0	2.3
Manufacture of rubber and plastic products	C22	-0.7	2.0	-1.2	-2.8	1.1	3.4
Manufacture of other non-metallic mineral products	C23	8.4	1.6	-0.6	-1.1	1.0	-1.3
Manufacture of basic metals	C24	-6.7	-3.7	2.3	-3.4	-8.2	4.9
Manufacture of fabricated metal products, except machinery and equipment	C25	7.9	-2.6	5.7	5.0	-3.3	5.7
Manufacture of computer, electronic and optical products	C26	0.2	3.4	-1.0	-0.3	-8.3	13.3
Manufacture of electrical equipment	C27	3.3	-6.4	7.7	1.0	-3.0	3.4
Manufacture of machinery and equipment n.e.c.	C28	0.2	2.5	-1.8	-0.8	-2.3	1.0
Manufacture of motor vehicles, trailers and semi-trailers	C29	-2.8	4.2	2.0	-5.8	7.6	1.0
Manufacture of other transport equipment	C30	13.8	-14.0	3.0	20.3	6.1	-3.6
Manufacture of furniture	C31	-8.0	0.3	4.0	-4.8	10.7	-4.5
Other manufacturing	C32	2.0	5.6	5.2	-0.3	-6.4	6.8
Repair and installation of machinery and equipment	C33	11.9	-2.4	3.5	-7.7	-9.7	16.9
Electricity, gas, steam and air conditioning supply	D	-2.5	-1.5	-1.0	0.4	-3.5	-0.6
Electricity, gas, steam and air conditioning supply	D35	-2.5	-1.5	-1.0	0.4	-3.5	-0.6

¹ Seasonally adjusted.



Table 2
Changes of Industrial Production Indices compared to the same month of the previous year¹
(Per cent)

Economic Activities	NACE.BG - 2008	2015					
		V	VI	VII	VIII	IX	X
Industry	B_TO_E36	3.9	5.8	3.4	4.3	0.8	1.0
Mining and quarrying	B	1.4	5.9	3.6	0.0	9.1	-9.3
of which:							
Mining of coal and lignite	B05	-7.6	27.1	31.9	28.4	25.8	-12.4
Mining of metal ores	B07	6.1	-2.3	-9.6	-14.0	0.2	-9.7
Other mining and quarrying	B08	7.9	15.5	7.8	-0.5	-2.1	3.8
Manufacturing	C	4.1	6.6	3.6	4.2	0.6	4.4
of which:							
Manufacture of food products	C10	0.5	0.0	-5.6	-2.9	-1.9	0.8
Manufacture of beverages	C11	4.7	6.6	8.2	5.3	4.7	6.9
Manufacture of tobacco products	C12	-7.5	1.1	-18.2	-12.4	-28.8	-18.8
Manufacture of textiles	C13	-3.3	5.1	1.7	-3.0	-3.0	6.9
Manufacture of wearing apparel	C14	-12.6	3.5	1.3	-9.5	-0.1	11.0
Manufacture of leather and related products	C15	-5.9	-3.2	6.4	-0.7	3.1	-8.6
Manufacture of wood and of products of wood and cork, except furniture; manufacture of articles of straw and plaiting materials	C16	-8.2	-1.0	-10.6	-1.5	5.3	-3.5
Manufacture of paper and paper products	C17	0.9	6.1	-3.5	1.3	10.7	16.1
Printing and reproduction of recorded media	C18	-1.6	14.3	6.8	15.3	5.0	8.3
Manufacture of chemicals and chemical products	C20	-7.1	8.0	24.4	16.5	0.0	-10.4
Manufacture of basic pharmaceutical products and pharmaceutical preparations	C21	7.2	7.4	8.4	17.5	7.8	5.5
Manufacture of rubber and plastic products	C22	4.5	5.1	2.0	1.6	2.0	4.2
Manufacture of other non-metallic mineral products	C23	10.7	21.5	12.2	9.9	15.4	12.2
Manufacture of basic metals	C24	-2.1	-10.5	-5.6	-8.4	-18.5	-10.4
Manufacture of fabricated metal products, except machinery and equipment	C25	17.6	5.2	5.0	17.6	-2.4	14.9
Manufacture of computer, electronic and optical products	C26	7.7	16.3	1.8	15.2	0.2	7.8
Manufacture of electrical equipment	C27	19.1	6.8	18.3	23.7	11.8	12.6
Manufacture of machinery and equipment n.e.c.	C28	3.9	8.0	3.7	2.2	-6.6	-1.9
Manufacture of motor vehicles, trailers and semi-trailers	C29	12.9	15.8	16.9	11.9	12.3	6.2
Manufacture of other transport equipment	C30	32.4	6.1	-16.1	63.2	54.1	29.4
Manufacture of furniture	C31	-3.0	-1.6	0.5	-11.0	8.4	1.0
Other manufacturing	C32	21.8	18.5	12.9	19.0	12.4	28.7
Repair and installation of machinery and equipment	C33	19.3	8.4	8.5	-2.9	-17.5	8.7
Electricity, gas, steam and air conditioning supply	D	4.7	3.1	2.3	6.2	-2.5	-5.9
Electricity, gas, steam and air conditioning supply	D35	4.7	3.1	2.3	6.2	-2.5	-5.9

¹ Working day adjusted.

Table 3

Industrial Production Indices
(Seasonally adjusted, 2010 = 100)

NACE.BG - 2008	2014			2015									
	X	XI	XII	I	II	III	IV	V	VI	VII	VIII	IX	X
B_TO_E36	108.3	108.4	109.6	111.4	110.6	109.1	109.5	110.2	110.9	110.0	109.8	109.0	109.0
B	95.7	97.5	100.5	101.2	102.6	96.4	99.4	100.3	101.5	98.4	97.9	100.9	88.4
B05	105.2	101.6	104.0	116.8	116.1	105.6	119.0	105.8	107.9	117.1	123.2	124.2	94.9
B07	98.1	102.1	103.0	84.6	89.2	86.8	83.4	94.0	99.0	87.1	81.4	86.8	88.6
B08	115.9	115.9	114.2	108.1	105.7	108.4	109.6	111.6	119.1	118.7	112.0	110.8	119.3
C	111.3	111.3	112.5	113.4	113.5	112.2	111.3	113.2	114.5	113.9	113.5	113.1	115.3
C10	90.6	92.9	91.8	94.2	96.8	87.4	91.9	88.0	88.3	85.1	87.2	87.3	91.0
C11	88.6	91.3	95.9	100.8	102.0	97.0	100.7	99.0	100.1	102.3	101.8	97.4	96.3
C12	116.9	115.0	120.3	109.0	112.6	111.0	103.5	98.7	96.0	90.8	93.9	83.3	96.6
C13	112.5	108.2	114.7	111.6	100.9	99.4	102.2	105.4	108.3	110.0	106.8	107.8	116.9
C14	97.8	94.8	94.0	96.0	92.0	89.0	91.5	91.4	96.5	94.3	91.4	95.8	101.2
C15	81.2	91.2	85.4	80.8	76.3	75.8	81.5	71.0	74.2	80.1	79.4	78.7	74.7
C16	98.8	92.7	97.1	99.4	104.1	105.4	101.5	93.6	97.2	91.7	97.3	95.9	95.4
C17	122.0	120.3	117.0	120.6	118.6	123.4	111.1	118.1	124.2	116.3	119.4	132.0	139.3
C18	105.8	109.8	106.6	112.2	114.8	114.1	107.8	106.4	117.1	112.2	111.6	109.9	114.3
C20	129.3	109.1	108.9	112.8	101.7	100.8	106.4	99.3	113.3	121.0	122.9	111.5	115.6
C21	140.2	138.5	152.2	153.6	135.9	153.3	150.5	143.7	142.6	147.7	144.8	144.7	148.1
C22	129.6	124.8	123.3	136.8	135.3	129.3	132.4	131.5	134.0	132.4	128.7	130.1	134.5
C23	112.6	115.4	119.2	116.1	117.6	120.5	117.6	127.4	129.5	128.6	127.2	128.5	126.8
C24	102.5	93.5	104.8	107.6	103.3	98.6	108.9	101.6	97.8	100.1	96.6	88.7	93.0
C25	118.4	124.7	121.2	126.6	128.8	111.5	112.6	121.5	118.3	125.0	131.3	126.9	134.2
C26	141.8	133.6	128.6	135.1	147.8	141.5	143.2	143.4	148.4	146.9	146.4	134.2	152.1
C27	131.9	130.6	128.3	139.3	140.1	144.7	140.5	145.2	135.9	146.4	147.9	143.5	148.3
C28	142.6	156.0	137.0	153.6	148.8	140.3	142.3	142.5	146.0	143.4	142.2	138.9	140.3
C29	151.8	149.0	153.0	155.1	159.3	155.4	151.7	147.5	153.6	156.7	147.5	158.8	160.5
C30	82.6	82.3	81.5	118.8	93.5	92.6	83.4	94.9	81.6	84.1	101.1	107.3	103.4
C31	125.1	124.7	117.5	126.6	130.3	119.6	130.8	120.4	120.7	125.5	119.5	132.3	126.3
C32	141.0	148.6	147.3	176.1	152.6	158.0	160.0	163.3	172.4	181.3	180.7	169.2	180.7
C33	85.4	105.6	77.4	98.0	91.7	97.8	83.8	93.8	91.6	94.8	87.4	78.9	92.2
D	107.0	107.0	107.2	112.5	107.7	107.7	110.8	108.0	106.5	105.4	105.9	102.2	101.6
D35	107.0	107.0	107.2	112.5	107.7	107.7	110.8	108.0	106.5	105.4	105.9	102.2	101.6



Table 4

Industrial Production Indices
(Working day adjusted, 2010 = 100)

NACE.BG - 2008	2012	2013	2014			2015									
	X	X	X	XI	XII	I	II	III	IV	V	VI	VII	VIII	IX	X
B_TO_E36	107.4	113.8	113.3	115.6	113.5	106.2	104.2	109.6	107.1	105.0	111.4	113.6	106.8	108.5	114.5
B	124.1	134.4	111.8	107.7	110.7	98.1	94.6	89.6	92.2	93.9	96.5	97.3	96.1	104.1	101.4
B05	130.6	147.7	134.2	115.6	124.8	132.4	114.8	94.3	105.4	88.7	83.9	107.4	120.8	132.9	117.5
B07	107.7	129.0	98.1	102.1	103.0	84.6	89.2	86.8	83.4	94.0	99.0	87.1	81.4	86.8	88.6
B08	143.1	123.5	136.5	131.2	116.1	68.3	73.4	97.0	109.2	117.4	131.2	135.2	125.1	122.5	141.8
C	109.0	114.3	118.0	117.5	108.5	99.1	102.1	111.3	112.4	112.6	120.7	122.2	111.5	115.1	123.2
C10	101.7	102.0	99.7	99.5	96.0	78.8	83.5	85.8	88.6	86.0	90.6	86.2	89.9	94.2	100.5
C11	94.5	88.8	77.0	81.8	101.5	63.4	69.9	91.4	102.0	111.0	122.9	126.7	129.8	104.8	82.3
C12	98.2	93.5	112.3	108.0	119.0	79.1	89.0	115.7	102.9	103.6	104.6	104.8	91.8	86.5	91.2
C13	88.9	100.0	112.2	110.2	100.4	97.4	95.8	111.4	112.5	117.6	120.0	116.3	86.9	102.9	119.9
C14	86.9	91.2	93.7	95.0	93.1	98.7	91.2	85.1	84.7	83.9	105.2	109.6	93.2	91.3	104.0
C15	74.2	82.1	84.7	93.4	79.5	81.5	73.3	74.0	69.9	59.3	76.3	97.0	81.7	86.3	77.5
C16	113.8	107.9	111.3	101.7	89.1	79.3	86.6	102.4	99.6	92.2	106.2	102.1	100.1	102.7	107.4
C17	98.6	116.5	118.9	116.4	110.4	113.3	110.7	129.3	114.0	121.0	131.3	123.4	119.1	133.6	138.0
C18	93.3	104.9	113.6	120.3	121.1	96.0	103.2	111.7	105.7	103.9	119.5	111.8	107.9	112.2	123.1
C20	95.9	95.2	127.4	112.9	107.5	105.0	94.9	110.6	110.7	99.5	117.9	121.7	116.2	111.3	114.1
C21	135.3	142.0	151.9	143.1	157.1	137.0	134.5	160.1	158.3	140.6	148.0	138.8	127.2	142.9	160.3
C22	117.2	126.3	144.0	130.5	105.8	115.2	117.9	127.6	132.2	132.1	146.1	146.7	129.2	137.7	150.0
C23	125.9	126.0	126.1	125.2	101.0	81.8	96.7	117.5	123.6	140.3	140.6	140.8	135.5	139.1	141.5
C24	97.4	118.3	115.5	97.9	79.5	112.6	102.8	89.8	122.0	105.2	92.4	118.9	91.9	76.8	103.4
C25	104.6	132.0	124.0	134.8	136.7	94.3	114.8	111.2	110.0	118.3	125.1	131.0	130.2	131.1	142.4
C26	104.0	141.1	144.2	141.8	147.5	119.4	136.0	147.0	140.3	144.0	155.4	149.0	128.3	134.3	155.4
C27	140.4	128.6	144.7	144.5	120.1	130.5	132.7	149.9	141.5	142.1	141.2	154.6	130.6	142.1	162.9
C28	123.3	142.5	146.5	166.2	129.5	135.4	143.0	148.6	144.8	139.6	156.8	149.8	127.9	140.1	143.7
C29	98.6	116.7	163.5	164.9	135.1	150.4	153.4	163.8	155.8	146.3	163.0	157.6	121.5	161.4	173.6
C30	99.4	83.6	78.1	74.6	85.4	95.1	86.0	101.4	87.8	116.1	90.5	88.3	81.1	97.5	101.0
C31	125.7	135.8	138.3	135.8	120.0	106.7	115.5	115.4	126.3	117.0	124.6	130.0	121.4	139.0	139.8
C32	159.9	184.1	164.1	156.3	125.8	147.1	130.9	160.1	156.9	164.0	196.5	186.3	186.3	179.1	211.2
C33	98.3	89.1	90.9	122.9	105.2	69.5	78.4	97.0	74.2	85.9	92.2	93.7	87.3	80.9	98.8
D	98.3	105.0	101.9	116.3	134.1	134.5	118.2	117.0	100.7	88.3	91.2	96.2	96.0	90.2	95.9
D35	98.3	105.0	101.9	116.3	134.1	134.5	118.2	117.0	100.7	88.3	91.2	96.2	96.0	90.2	95.9