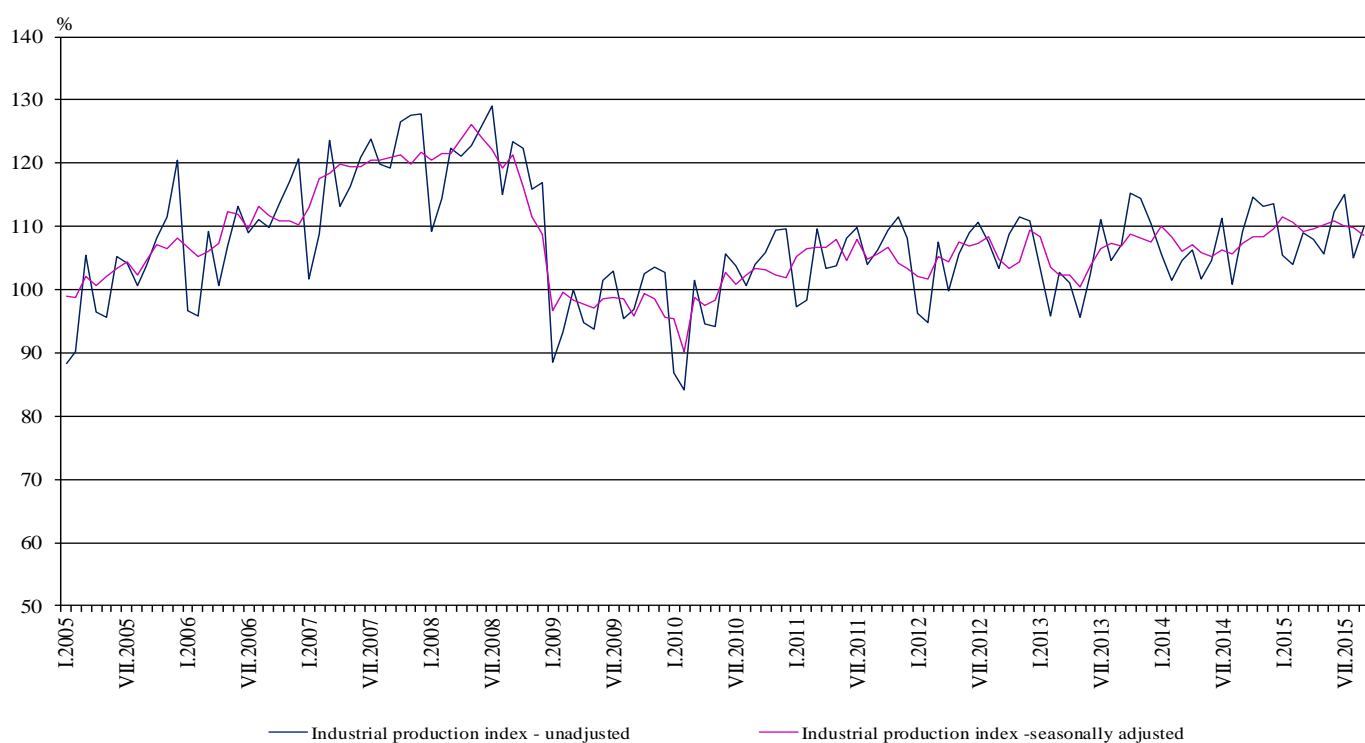


INDUSTRIAL PRODUCTION INDICES IN SEPTEMBER 2015¹

According to the preliminary data the Industrial Production Index², seasonally adjusted³, decreased by 1.1% in September 2015 as compared to August 2015.

In September 2015 working day adjusted⁴ Industrial Production Index rose by 0.6% in comparison with the same month of 2014.

Figure 1. Industrial Production Indices (2010 = 100)



¹ September 2015 data are preliminary.

² Monthly Industrial Production and Industrial turnover indices measure changes in production and turnover values of industrial enterprises. This information can be used to assess the current economic development and for short-term forecasts. Indices do not measure the actual production level, it aims to measure the average change in value of production between two points of time. Indices are compiled on the base of information collected through representative sampling survey on industrial enterprises. The sample covers enterprises with annual turnover more than 97% of total turnover in industry.

Industrial production indices are calculated at constant base year that is to say they are weighted with the structure of the value added at factor costs in the base year.

³ Seasonal adjustment is a statistical method, which eliminates the seasonal component of time series.

⁴ Working day adjustment is an adjustment for variations caused by calendar effects, different number of calendar and working days in the months, national holidays and outliers (for example the presence of more non-working days in May could contribute to the decline in the production in some activities).

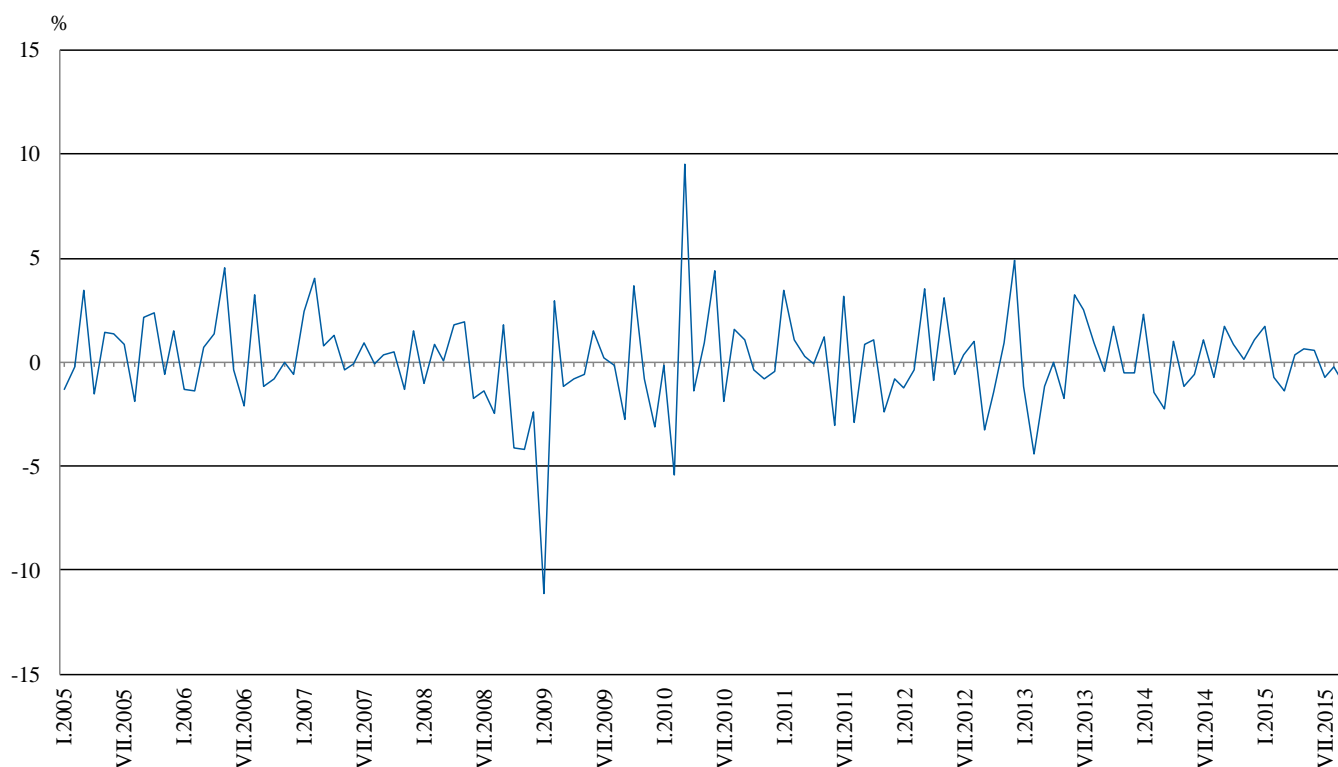


Monthly comparisons

In September 2015 as compared to August 2015, the seasonally adjusted Industrial Production Index decreased in the electricity, gas, steam and air conditioning supply by 3.1% and in the manufacturing by 1.0%, while in the mining and quarrying industry an increase by 3.7% was seen.

The most significant decreases of production in the manufacturing were registered in the manufacture of chemicals and chemical products by 11.8%, in the manufacture of tobacco products by 11.3%, in the repair and installation of machinery and equipment by 10.1%, in the manufacture of basic metals by 7.6%. There were increases in the manufacture of furniture by 11.0%, in the manufacture of paper and paper products by 10.0%, in the manufacture of motor vehicles, trailers and semi-trailers by 6.3%, in the manufacture of other transport equipment by 3.7%.

Figure 2. Changes of Industrial Production Indices compared to the previous month (Seasonally adjusted)



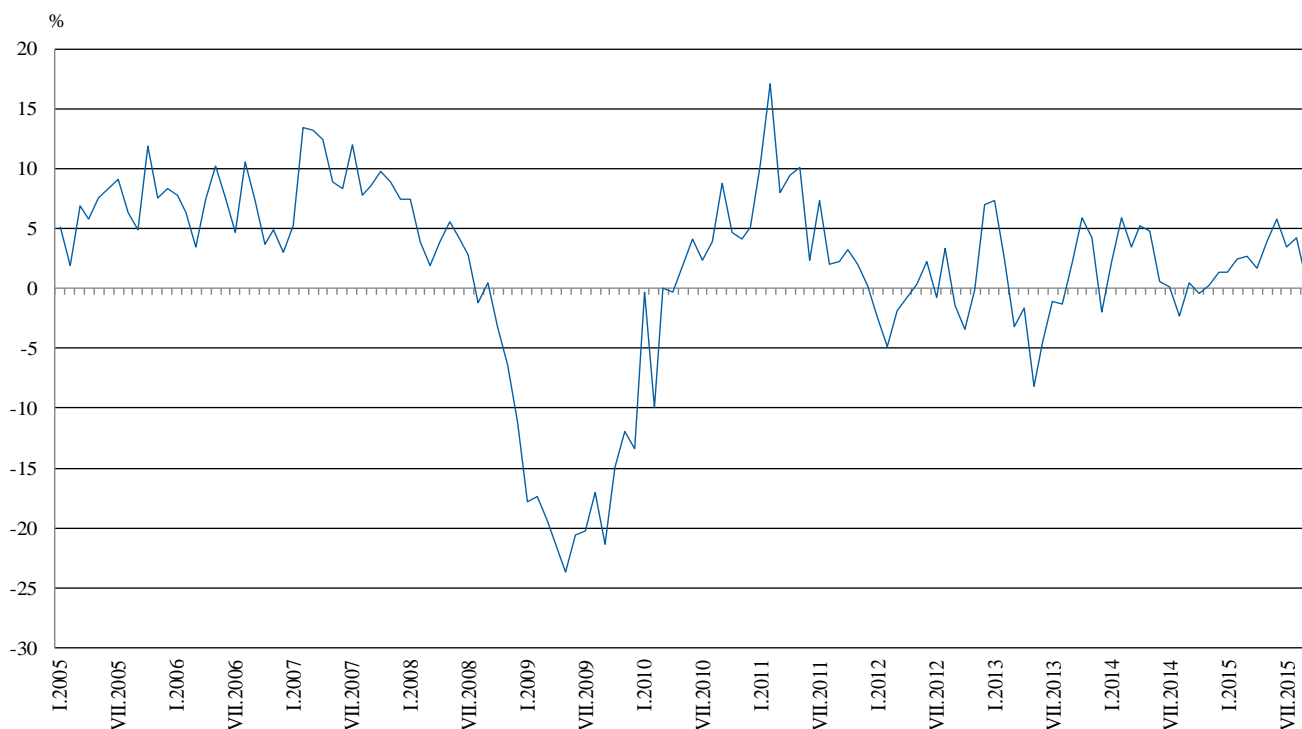


Annual comparisons

On annual basis in September 2015 Industrial Production Index calculated from working day adjusted data increased in the mining and quarrying industry by 9.1% and in the manufacturing by 0.2%, while in the electricity, gas, steam and air conditioning supply a decrease by 2.2% was seen.

In the manufacturing, the more significant increases compared to the same month of the previous year were seen in the manufacture of other transport equipment by 50.8%, in the manufacture of other non-metallic mineral products by 14.5%, in the manufacture of paper and paper products by 10.7%, in the manufacture of motor vehicles, trailers and semi-trailers by 10.6%. Decreases were registered in the manufacture of tobacco products by 28.7%, in the manufacture of basic metals by 18.3%, in the repair and installation of machinery and equipment by 17.7%, in the manufacture of machinery and equipment by 6.4%.

Figure 3. Changes of Industrial Production Indices compared to the same month of the previous year (Working day adjusted)



The final data on Industrial Production and Turnover Indices for August 2015 can be found on the NSI website: <http://www.nsi.bg/en>.

Annex

Changes of Industrial Production Indices compared to the previous month¹

Table 1

(Per cent)

Economic Activities	NACE.BG - 2008	2015					
		IV	V	VI	VII	VIII	IX
Industry	B_TO_E36	0.4	0.7	0.6	-0.8	-0.2	-1.1
Mining and quarrying	B	3.2	0.9	1.2	-3.1	-0.6	3.7
of which:							
Mining of coal and lignite	B05	12.7	-11.1	1.9	8.5	5.2	2.1
Mining of metal ores	B07	-3.9	12.6	5.4	-12.1	-6.6	6.7
Other mining and quarrying	B08	1.1	1.9	6.7	-0.4	-5.6	-2.5
Manufacturing	C	-0.8	1.7	1.2	-0.5	-0.4	-1.0
of which:							
Manufacture of food products	C10	5.2	-4.3	0.3	-3.6	2.6	-1.5
Manufacture of beverages	C11	3.9	-1.7	1.1	2.2	-0.5	-4.2
Manufacture of tobacco products	C12	-6.8	-4.6	-2.7	-5.5	3.5	-11.3
Manufacture of textiles	C13	2.8	3.1	2.8	1.6	-2.9	0.0
Manufacture of wearing apparel	C14	2.8	0.0	5.6	-2.3	-3.1	2.8
Manufacture of leather and related products	C15	7.5	-12.8	4.4	8.0	-0.9	-0.8
Manufacture of wood and of products of wood and cork, except furniture; manufacture of articles of straw and plaiting materials	C16	-3.8	-7.8	3.9	-5.7	6.1	1.2
Manufacture of paper and paper products	C17	-9.9	6.2	5.2	-6.4	2.7	10.0
Printing and reproduction of recorded media	C18	-5.5	-1.3	10.0	-4.2	-0.6	-1.7
Manufacture of chemicals and chemical products	C20	5.6	-6.6	14.1	6.8	1.6	-11.8
Manufacture of basic pharmaceutical products and pharmaceutical preparations	C21	-1.9	-4.5	-0.8	3.6	-2.0	-0.2
Manufacture of rubber and plastic products	C22	2.4	-0.7	2.0	-1.2	-2.8	1.9
Manufacture of other non-metallic mineral products	C23	-2.5	8.4	1.6	-0.6	-1.1	0.4
Manufacture of basic metals	C24	10.4	-6.7	-3.7	2.3	-3.4	-7.6
Manufacture of fabricated metal products, except machinery and equipment	C25	1.0	7.9	-2.6	5.7	5.0	-3.4
Manufacture of computer, electronic and optical products	C26	1.2	0.2	3.4	-1.0	-0.3	-9.1
Manufacture of electrical equipment	C27	-2.9	3.3	-6.4	7.7	1.0	-4.3
Manufacture of machinery and equipment n.e.c.	C28	1.4	0.2	2.5	-1.8	-0.8	-2.0
Manufacture of motor vehicles, trailers and semi-trailers	C29	-2.4	-2.8	4.2	2.0	-5.8	6.3
Manufacture of other transport equipment	C30	-10.0	13.8	-14.0	3.0	20.3	3.7
Manufacture of furniture	C31	9.4	-8.0	0.3	4.0	-4.8	11.0
Other manufacturing	C32	1.2	2.0	5.6	5.2	-0.3	-7.3
Repair and installation of machinery and equipment	C33	-14.3	11.9	-2.4	3.5	-7.7	-10.1
Electricity, gas, steam and air conditioning supply	D	2.9	-2.5	-1.5	-1.0	0.4	-3.1
Electricity, gas, steam and air conditioning supply	D35	2.9	-2.5	-1.5	-1.0	0.4	-3.1

¹ Seasonally adjusted.



Table 2
Changes of Industrial Production Indices compared to the same month of the previous year¹
(Per cent)

Economic Activities	NACE.BG - 2008	2015					
		IV	V	VI	VII	VIII	IX
Industry	B_TO_E36	1.6	3.9	5.8	3.4	4.3	0.6
Mining and quarrying	B	-0.8	1.4	5.9	3.6	0.0	9.1
of which:							
Mining of coal and lignite	B05	11.0	-7.6	27.1	31.9	28.4	26.0
Mining of metal ores	B07	-5.8	6.1	-2.3	-9.6	-14.0	0.2
Other mining and quarrying	B08	-3.6	7.9	15.5	7.8	-0.5	-3.3
Manufacturing	C	0.4	4.1	6.6	3.6	4.2	0.2
of which:							
Manufacture of food products	C10	-0.6	0.5	0.0	-5.6	-2.9	-3.5
Manufacture of beverages	C11	-1.3	4.7	6.6	8.2	5.3	4.5
Manufacture of tobacco products	C12	-11.9	-7.5	1.1	-18.2	-12.4	-28.7
Manufacture of textiles	C13	-7.0	-3.3	5.1	1.7	-3.0	-2.8
Manufacture of wearing apparel	C14	-9.2	-12.6	3.5	1.3	-9.5	-0.3
Manufacture of leather and related products	C15	9.3	-5.9	-3.2	6.4	-0.7	2.7
Manufacture of wood and of products of wood and cork, except furniture; manufacture of articles of straw and plaiting materials	C16	4.6	-8.2	-1.0	-10.6	-1.5	8.4
Manufacture of paper and paper products	C17	-7.2	0.9	6.1	-3.5	1.3	10.7
Printing and reproduction of recorded media	C18	0.8	-1.6	14.3	6.8	15.3	4.9
Manufacture of chemicals and chemical products	C20	-2.2	-7.1	8.0	24.4	16.5	-2.8
Manufacture of basic pharmaceutical products and pharmaceutical preparations	C21	7.5	7.2	7.4	8.4	17.5	7.6
Manufacture of rubber and plastic products	C22	3.4	4.5	5.1	2.0	1.6	3.5
Manufacture of other non-metallic mineral products	C23	-0.8	10.7	21.5	12.2	9.9	14.5
Manufacture of basic metals	C24	13.0	-2.1	-10.5	-5.6	-8.4	-18.3
Manufacture of fabricated metal products, except machinery and equipment	C25	-4.3	17.6	5.2	5.0	17.6	-2.2
Manufacture of computer, electronic and optical products	C26	12.8	7.7	16.3	1.8	15.2	-0.7
Manufacture of electrical equipment	C27	9.8	19.1	6.8	18.3	23.7	10.1
Manufacture of machinery and equipment n.e.c.	C28	-4.6	3.9	8.0	3.7	2.2	-6.4
Manufacture of motor vehicles, trailers and semi-trailers	C29	16.8	12.9	15.8	16.9	11.9	10.6
Manufacture of other transport equipment	C30	-22.5	32.4	6.1	-16.1	63.2	50.8
Manufacture of furniture	C31	8.8	-3.0	-1.6	0.5	-11.0	8.6
Other manufacturing	C32	-0.2	21.8	18.5	12.9	19.0	11.2
Repair and installation of machinery and equipment	C33	5.7	19.3	8.4	8.5	-2.9	-17.7
Electricity, gas, steam and air conditioning supply	D	7.3	4.7	3.1	2.3	6.2	-2.2
Electricity, gas, steam and air conditioning supply	D35	7.3	4.7	3.1	2.3	6.2	-2.2

¹ Working day adjusted.

Table 3

Industrial Production Indices
(Seasonally adjusted, 2010 = 100)

NACE.BG - 2008	2014				2015								
	IX	X	XI	XII	I	II	III	IV	V	VI	VII	VIII	IX
B_TO_E36	107.4	108.3	108.4	109.6	111.4	110.6	109.1	109.5	110.2	110.9	110.0	109.8	108.6
B	93.3	95.7	97.5	100.5	101.2	102.6	96.4	99.4	100.3	101.5	98.4	97.9	101.5
B05	100.6	105.2	101.6	104.0	116.8	116.1	105.6	119.0	105.8	107.9	117.1	123.2	125.8
B07	86.7	98.1	102.1	103.0	84.6	89.2	86.8	83.4	94.0	99.0	87.1	81.4	86.8
B08	112.3	115.9	115.9	114.2	108.1	105.7	108.4	109.6	111.6	119.1	118.7	112.0	109.3
C	111.3	111.3	111.3	112.5	113.4	113.5	112.2	111.3	113.2	114.5	113.9	113.5	112.3
C10	88.9	90.6	92.9	91.8	94.2	96.8	87.4	91.9	88.0	88.3	85.1	87.2	85.9
C11	92.1	88.6	91.3	95.9	100.8	102.0	97.0	100.7	99.0	100.1	102.3	101.8	97.6
C12	109.0	116.9	115.0	120.3	109.0	112.6	111.0	103.5	98.7	96.0	90.8	93.9	83.3
C13	110.6	112.5	108.2	114.7	111.6	100.9	99.4	102.2	105.4	108.3	110.0	106.8	106.8
C14	96.4	97.8	94.8	94.0	96.0	92.0	89.0	91.5	91.4	96.5	94.3	91.4	93.9
C15	77.6	81.2	91.2	85.4	80.8	76.3	75.8	81.5	71.0	74.2	80.1	79.4	78.7
C16	90.4	98.8	92.7	97.1	99.4	104.1	105.4	101.5	93.6	97.2	91.7	97.3	98.5
C17	119.5	122.0	120.3	117.0	120.6	118.6	123.4	111.1	118.1	124.2	116.3	119.4	131.4
C18	103.9	105.8	109.8	106.6	112.2	114.8	114.1	107.8	106.4	117.1	112.2	111.6	109.7
C20	111.3	129.3	109.1	108.9	112.8	101.7	100.8	106.4	99.3	113.3	121.0	122.9	108.4
C21	132.2	140.2	138.5	152.2	153.6	135.9	153.3	150.5	143.7	142.6	147.7	144.8	144.5
C22	126.3	129.6	124.8	123.3	136.8	135.3	129.3	132.4	131.5	134.0	132.4	128.7	131.1
C23	111.7	112.6	115.4	119.2	116.1	117.6	120.5	117.6	127.4	129.5	128.6	127.2	127.8
C24	102.1	102.5	93.5	104.8	107.6	103.3	98.6	108.9	101.6	97.8	100.1	96.6	89.2
C25	130.4	118.4	124.7	121.2	126.6	128.8	111.5	112.6	121.5	118.3	125.0	131.3	126.8
C26	131.6	141.8	133.6	128.6	135.1	147.8	141.5	143.2	143.4	148.4	146.9	146.4	133.0
C27	126.0	131.9	130.6	128.3	139.3	140.1	144.7	140.5	145.2	135.9	146.4	147.9	141.5
C28	147.7	142.6	156.0	137.0	153.6	148.8	140.3	142.3	142.5	146.0	143.4	142.2	139.4
C29	141.7	151.8	149.0	153.0	155.1	159.3	155.4	151.7	147.5	153.6	156.7	147.5	156.8
C30	73.6	82.6	82.3	81.5	118.8	93.5	92.6	83.4	94.9	81.6	84.1	101.1	104.9
C31	124.0	125.1	124.7	117.5	126.6	130.3	119.6	130.8	120.4	120.7	125.5	119.5	132.6
C32	150.0	141.0	148.6	147.3	176.1	152.6	158.0	160.0	163.3	172.4	181.3	180.7	167.5
C33	93.4	85.4	105.6	77.4	98.0	91.7	97.8	83.8	93.8	91.6	94.8	87.4	78.6
D	104.1	107.0	107.0	107.2	112.5	107.7	107.7	110.8	108.0	106.5	105.4	105.9	102.6
D35	104.1	107.0	107.0	107.2	112.5	107.7	107.7	110.8	108.0	106.5	105.4	105.9	102.6



Table 4

Industrial Production Indices
(Working day adjusted, 2010 = 100)

NACE.BG - 2008	2012	2013	2014				2015								
	IX	IX	IX	X	XI	XII	I	II	III	IV	V	VI	VII	VIII	IX
B_TO_E36	104.8	107.1	107.6	113.3	115.6	113.5	106.2	104.2	109.6	107.1	105.0	111.4	113.6	106.8	108.2
B	116.6	102.5	95.4	111.8	107.7	110.7	98.1	94.6	89.6	92.2	93.9	96.5	97.3	96.1	104.1
B05	123.7	105.7	105.6	134.2	115.6	124.8	132.4	114.8	94.3	105.4	88.7	83.9	107.4	120.8	133.1
B07	98.9	98.8	86.7	98.1	102.1	103.0	84.6	89.2	86.8	83.4	94.0	99.0	87.1	81.4	86.8
B08	139.7	117.5	125.2	136.5	131.2	116.1	68.3	73.4	97.0	109.2	117.4	131.2	135.2	125.1	121.1
C	107.2	108.6	114.3	118.0	117.5	108.5	99.1	102.1	111.3	112.4	112.6	120.7	122.2	111.5	114.5
C10	98.6	97.7	96.1	99.7	99.5	96.0	78.8	83.5	85.8	88.6	86.0	90.6	86.2	89.9	92.7
C11	109.3	115.8	100.2	77.0	81.8	101.5	63.4	69.9	91.4	102.0	111.0	122.9	126.7	129.8	104.6
C12	140.1	126.7	121.5	112.3	108.0	119.0	79.1	89.0	115.7	102.9	103.6	104.6	104.8	91.8	86.6
C13	82.6	100.0	106.1	112.2	110.2	100.4	97.4	95.8	111.4	112.5	117.6	120.0	116.3	86.9	103.1
C14	88.4	93.5	91.3	93.7	95.0	93.1	98.7	91.2	85.1	84.7	83.9	105.2	109.6	93.2	91.1
C15	90.1	85.4	83.7	84.7	93.4	79.5	81.5	73.3	74.0	69.9	59.3	76.3	97.0	81.7	86.0
C16	106.2	105.6	97.5	111.3	101.7	89.1	79.3	86.6	102.4	99.6	92.2	106.2	102.1	100.1	105.6
C17	108.4	117.4	120.7	118.9	116.4	110.4	113.3	110.7	129.3	114.0	121.0	131.3	123.4	119.1	133.6
C18	89.2	105.9	106.9	113.6	120.3	121.1	96.0	103.2	111.7	105.7	103.9	119.5	111.8	107.9	112.1
C20	103.3	85.6	111.3	127.4	112.9	107.5	105.0	94.9	110.6	110.7	99.5	117.9	121.7	116.2	108.1
C21	136.2	139.6	132.5	151.9	143.1	157.1	137.0	134.5	160.1	158.3	140.6	148.0	138.8	127.2	142.6
C22	113.7	123.7	135.0	144.0	130.5	105.8	115.2	117.9	127.6	132.2	132.1	146.1	146.7	129.2	139.6
C23	113.9	122.2	120.5	126.1	125.2	101.0	81.8	96.7	117.5	123.6	140.3	140.6	140.8	135.5	137.9
C24	89.5	93.8	94.3	115.5	97.9	79.5	112.6	102.8	89.8	122.0	105.2	92.4	118.9	91.9	77.0
C25	95.4	105.8	134.4	124.0	134.8	136.7	94.3	114.8	111.2	110.0	118.3	125.1	131.0	130.2	131.3
C26	126.7	120.3	134.1	144.2	141.8	147.5	119.4	136.0	147.0	140.3	144.0	155.4	149.0	128.3	133.2
C27	131.8	120.9	127.0	144.7	144.5	120.1	130.5	132.7	149.9	141.5	142.1	141.2	154.6	130.6	139.8
C28	121.4	137.0	150.1	146.5	166.2	129.5	135.4	143.0	148.6	144.8	139.6	156.8	149.8	127.9	140.5
C29	96.3	112.5	143.7	163.5	164.9	135.1	150.4	153.4	163.8	155.8	146.3	163.0	157.6	121.5	158.9
C30	78.0	63.6	63.3	78.1	74.6	85.4	95.1	86.0	101.4	87.8	116.1	90.5	88.3	81.1	95.4
C31	123.0	123.7	128.2	138.3	135.8	120.0	106.7	115.5	115.4	126.3	117.0	124.6	130.0	121.4	139.1
C32	149.8	148.7	159.4	164.1	156.3	125.8	147.1	130.9	160.1	156.9	164.0	196.5	186.3	186.3	177.3
C33	73.9	80.2	98.1	90.9	122.9	105.2	69.5	78.4	97.0	74.2	85.9	92.2	93.7	87.3	80.8
D	92.1	103.5	92.5	101.9	116.3	134.1	134.5	118.2	117.0	100.7	88.3	91.2	96.2	96.0	90.5
D35	92.1	103.5	92.5	101.9	116.3	134.1	134.5	118.2	117.0	100.7	88.3	91.2	96.2	96.0	90.5