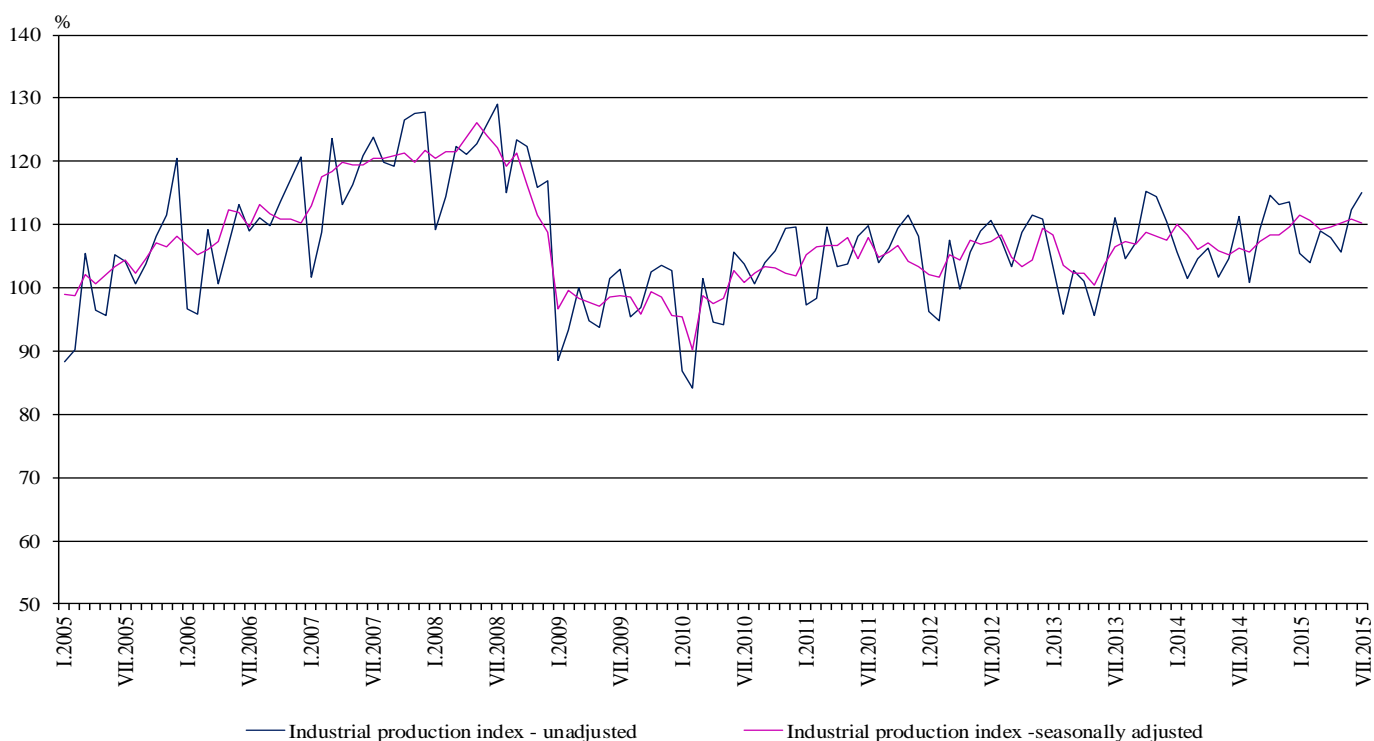


INDUSTRIAL PRODUCTION INDICES IN JULY 2015¹

According to the preliminary data the Industrial Production Index², seasonally adjusted³, decreased by 0.7% in July 2015 as compared to June 2015.

In July 2015 working day adjusted⁴ Industrial Production Index rose by 3.4% in comparison with the same month of 2014.

Figure 1. Industrial Production Indices (2010 = 100)



¹July 2015 data are preliminary.

² Monthly Industrial Production and Industrial turnover indices measure changes in production and turnover values of industrial enterprises. This information can be used to assess the current economic development and for short-term forecasts. Indices do not measure the actual production level, it aims to measure the average change in value of production between two points of time. Indices are compiled on the base of information collected through representative sampling survey on industrial enterprises. The sample covers enterprises with annual turnover more than 97% of total turnover in industry.

Industrial production indices are calculated at constant base year that is to say they are weighted with the structure of the value added at factor costs in the base year.

³ Seasonal adjustment is a statistical method, which eliminates the seasonal component of time series.

⁴ Working day adjustment is an adjustment for variations caused by calendar effects, different number of calendar and working days in the months, national holidays and outliers (for example the presence of more non-working days in May could contribute to the decline in the production in some activities).

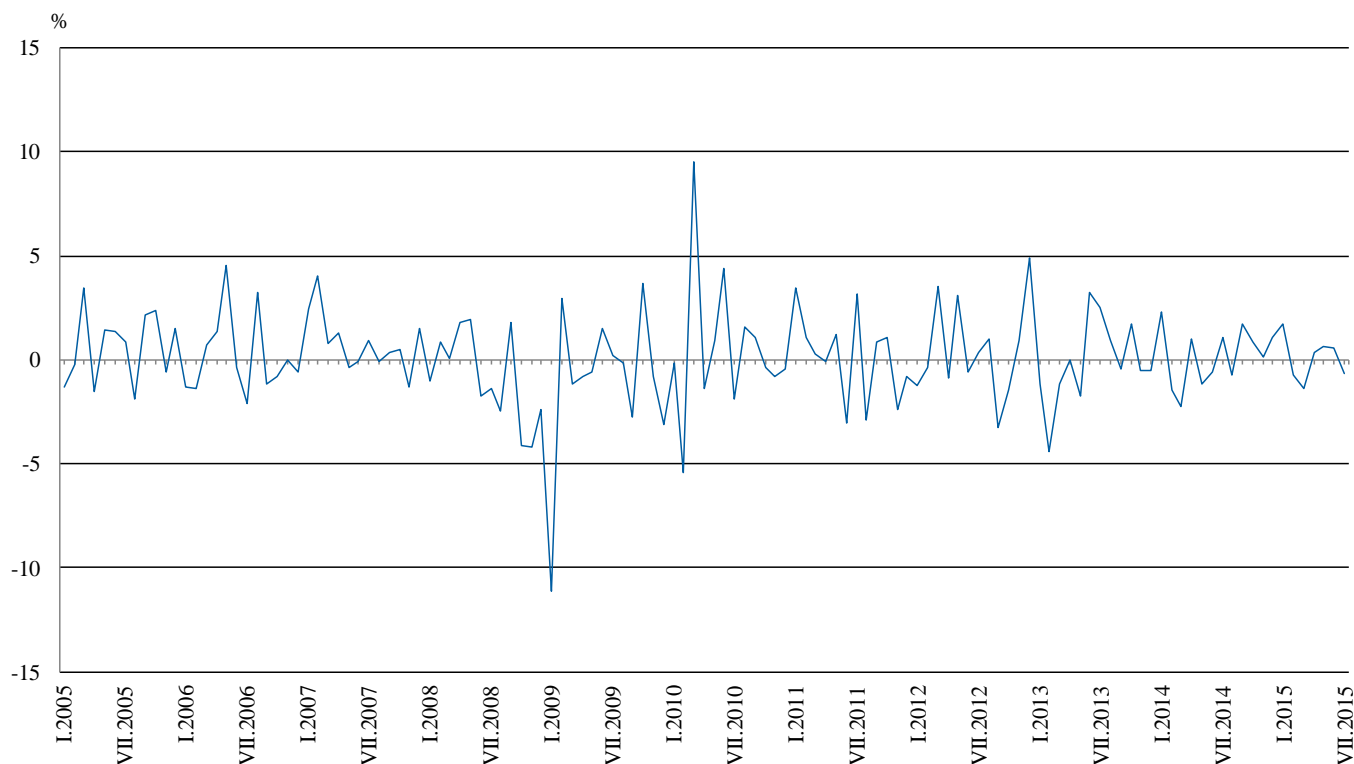


Monthly comparisons

In July 2015 as compared to June 2015, the seasonally adjusted Industrial Production Index decreased in the mining and quarrying industry by 3.0%, in the electricity, gas, steam and air conditioning supply by 0.9% and in the manufacturing by 0.4%.

The most significant decreases of production in the manufacturing were registered in the manufacture of paper and paper products by 6.9%, in the manufacture of wood and of products of wood and cork, except furniture; manufacture of articles of straw and plaiting materials by 6.2%, in the manufacture of tobacco products by 5.2%, in the printing and reproduction of recorded media by 4.1%. There were increases in the manufacture of chemicals and chemical products by 8.4%, in the manufacture of leather and related products by 8.2%, in the manufacture of fabricated metal products, except machinery and equipment by 5.4%, in the manufacture of furniture by 4.5%.

Figure 2. Changes of Industrial Production Indices compared to the previous month (Seasonally adjusted)



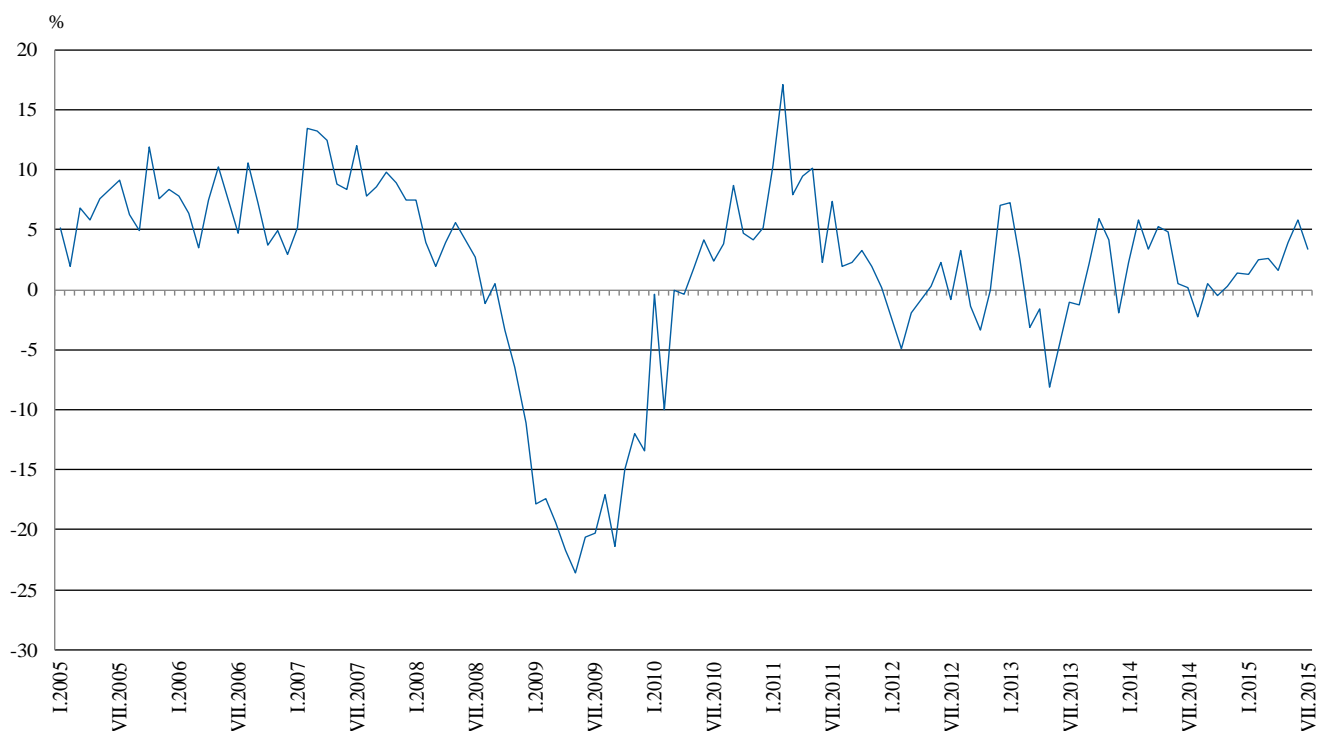


Annual comparisons

On annual basis in July 2015 Industrial Production Index calculated from working day adjusted data increased in the mining and quarrying industry and in the manufacturing by 3.6%, and in the electricity, gas, steam and air conditioning supply by 2.3%.

In the manufacturing, the more significant increases compared to the same month of the previous year were seen in the manufacture of chemicals and chemical products by 26.6%, in the manufacture of electrical equipment by 18.0%, in the manufacture of motor vehicles, trailers and semi-trailers by 16.7%, in the manufacture of other non-metallic mineral products by 13.2%. Decreases were registered in the manufacture of tobacco products by 18.3%, in the manufacture of other transport equipment by 16.1%, in the manufacture of wood and of products of wood and cork, except furniture; manufacture of articles of straw and plaiting materials by 11.1%, in the manufacture of basic metals by 5.7%.

Figure 3. Changes of Industrial Production Indices compared to the same month of the previous year (Working day adjusted)



The final data on Industrial Production and Turnover Indices for June 2015 can be found on the NSI website: <http://www.nsi.bg/en>.



Annex

Table 1
Changes of Industrial Production Indices compared to the previous month¹

(Per cent)

Economic Activities	NACE.BG - 2008	2015					
		II	III	IV	V	VI	VII
Industry	B_TO_E36	-0.7	-1.4	0.4	0.7	0.6	-0.7
Mining and quarrying	B	1.4	-6.1	3.2	0.9	1.2	-3.0
of which:							
Mining of coal and lignite	B05	-0.6	-9.1	12.7	-11.1	1.9	7.9
Mining of metal ores	B07	5.4	-2.7	-3.9	12.6	5.4	-12.0
Other mining and quarrying	B08	-2.2	2.5	1.1	1.9	6.7	-0.1
Manufacturing	C	0.1	-1.1	-0.8	1.7	1.2	-0.4
of which:							
Manufacture of food products	C10	2.7	-9.7	5.2	-4.3	0.3	-3.3
Manufacture of beverages	C11	1.1	-4.9	3.9	-1.7	1.1	2.3
Manufacture of tobacco products	C12	3.4	-1.5	-6.8	-4.6	-2.7	-5.2
Manufacture of textiles	C13	-9.5	-1.5	2.8	3.1	2.8	1.8
Manufacture of wearing apparel	C14	-4.1	-3.3	2.8	0.0	5.6	-2.3
Manufacture of leather and related products	C15	-5.6	-0.7	7.5	-12.8	4.4	8.2
Manufacture of wood and of products of wood and cork, except furniture; manufacture of articles of straw and plaiting materials	C16	4.8	1.2	-3.8	-7.8	3.9	-6.2
Manufacture of paper and paper products	C17	-1.6	4.0	-9.9	6.2	5.2	-6.9
Printing and reproduction of recorded media	C18	2.4	-0.6	-5.5	-1.3	10.0	-4.1
Manufacture of chemicals and chemical products	C20	-9.9	-0.9	5.6	-6.6	14.1	8.4
Manufacture of basic pharmaceutical products and pharmaceutical preparations	C21	-11.5	12.9	-1.9	-4.5	-0.8	3.9
Manufacture of rubber and plastic products	C22	-1.1	-4.4	2.4	-0.7	2.0	-0.9
Manufacture of other non-metallic mineral products	C23	1.3	2.5	-2.5	8.4	1.6	0.3
Manufacture of basic metals	C24	-4.0	-4.5	10.4	-6.7	-3.7	2.6
Manufacture of fabricated metal products, except machinery and equipment	C25	1.7	-13.4	1.0	7.9	-2.6	5.4
Manufacture of computer, electronic and optical products	C26	9.4	-4.2	1.2	0.2	3.4	-1.0
Manufacture of electrical equipment	C27	0.6	3.3	-2.9	3.3	-6.4	7.4
Manufacture of machinery and equipment n.e.c.	C28	-3.2	-5.7	1.4	0.2	2.5	-2.6
Manufacture of motor vehicles, trailers and semi-trailers	C29	2.7	-2.5	-2.4	-2.8	4.2	2.1
Manufacture of other transport equipment	C30	-21.3	-0.9	-10.0	13.8	-14.0	2.1
Manufacture of furniture	C31	2.9	-8.2	9.4	-8.0	0.3	4.5
Other manufacturing	C32	-13.3	3.6	1.2	2.0	5.6	5.0
Repair and installation of machinery and equipment	C32	-6.5	6.7	-14.3	11.9	-2.4	3.7
Electricity, gas, steam and air conditioning supply	D	-4.3	-0.1	2.9	-2.5	-1.5	-0.9
Electricity, gas, steam and air conditioning supply	D35	-4.3	-0.1	2.9	-2.5	-1.5	-0.9

¹ Seasonally adjusted.



Table 2
Changes of Industrial Production Indices compared to the same month of the previous year¹
(Per cent)

Economic Activities	NACE.BG - 2008	2015					
		II	III	IV	V	VI	VII
Industry	B_TO_E36	2.5	2.6	1.6	3.9	5.8	3.4
Mining and quarrying	B	5.9	3.3	-0.8	1.4	5.9	3.6
of which:							
Mining of coal and lignite	B05	15.3	20.9	11.0	-7.6	27.1	31.8
Mining of metal ores	B07	0.4	-5.0	-5.8	6.1	-2.3	-9.5
Other mining and quarrying	B08	4.8	2.7	-3.6	7.9	15.5	7.9
Manufacturing	C	3.4	4.1	0.4	4.1	6.6	3.6
of which:							
Manufacture of food products	C10	9.8	-4.7	-0.6	0.5	0.0	-5.3
Manufacture of beverages	C11	-1.0	-6.7	-1.3	4.7	6.6	8.6
Manufacture of tobacco products	C12	-6.9	0.5	-11.9	-7.5	1.1	-18.3
Manufacture of textiles	C13	-7.3	-13.1	-7.0	-3.3	5.1	1.5
Manufacture of wearing apparel	C14	-7.8	-14.6	-9.2	-12.6	3.5	-0.1
Manufacture of leather and related products	C15	-2.2	0.4	9.3	-5.9	-3.2	7.0
Manufacture of wood and of products of wood and cork, except furniture; manufacture of articles of straw and plaiting materials	C16	-2.5	6.9	4.6	-8.2	-1.0	-11.1
Manufacture of paper and paper products	C17	-2.7	8.5	-7.2	0.9	6.1	-3.9
Printing and reproduction of recorded media	C18	8.5	6.0	0.8	-1.6	14.3	6.8
Manufacture of chemicals and chemical products	C20	3.8	1.4	-2.2	-7.1	8.0	26.6
Manufacture of basic pharmaceutical products and pharmaceutical preparations	C21	-5.5	20.8	7.5	7.2	7.4	8.5
Manufacture of rubber and plastic products	C22	5.8	1.0	3.4	4.5	5.1	2.0
Manufacture of other non-metallic mineral products	C23	-4.1	7.2	-0.8	10.7	21.5	13.2
Manufacture of basic metals	C24	-1.0	-9.5	13.0	-2.1	-10.5	-5.7
Manufacture of fabricated metal products, except machinery and equipment	C25	12.7	5.4	-4.3	17.6	5.2	5.1
Manufacture of computer, electronic and optical products	C26	17.3	2.9	12.8	7.7	16.3	1.8
Manufacture of electrical equipment	C27	9.4	17.9	9.8	19.1	6.8	18.0
Manufacture of machinery and equipment n.e.c.	C28	7.5	2.3	-4.6	3.9	8.0	2.3
Manufacture of motor vehicles, trailers and semi- trailers	C29	22.4	17.4	16.8	12.9	15.8	16.7
Manufacture of other transport equipment	C30	11.1	12.1	-22.5	32.4	6.1	-16.1
Manufacture of furniture	C31	6.7	-2.3	8.8	-3.0	-1.6	0.6
Other manufacturing	C32	-0.5	-1.3	-0.2	21.8	18.5	12.9
Repair and installation of machinery and equipment	C33	11.6	26.7	5.7	19.3	8.4	8.6
Electricity, gas, steam and air conditioning supply	D	-1.2	-0.5	7.3	4.7	3.1	2.3
Electricity, gas, steam and air conditioning supply	D35	-1.2	-0.5	7.3	4.7	3.1	2.3

¹ Working day adjusted.

Table 3

Industrial Production Indices
(Seasonally adjusted, 2010 = 100)

NACE.BG - 2008	2014						2015						
	VII	VIII	IX	X	XI	XII	I	II	III	IV	V	VI	VII
B_TO_E36	106.3	105.6	107.4	108.3	108.4	109.6	111.4	110.6	109.1	109.5	110.2	110.9	110.2
B	94.9	97.4	93.3	95.7	97.5	100.5	101.2	102.6	96.4	99.4	100.3	101.5	98.5
B05	92.3	98.2	100.6	105.2	101.6	104.0	116.8	116.1	105.6	119.0	105.8	107.9	116.4
B07	96.3	94.7	86.7	98.1	102.1	103.0	84.6	89.2	86.8	83.4	94.0	99.0	87.2
B08	111.4	112.6	112.3	115.9	115.9	114.2	108.1	105.7	108.4	109.6	111.6	119.1	119.1
C	110.0	109.2	111.3	111.3	111.3	112.5	113.4	113.5	112.2	111.3	113.2	114.5	114.1
C10	89.9	89.8	88.9	90.6	92.9	91.8	94.2	96.8	87.4	91.9	88.0	88.3	85.4
C11	95.2	97.9	92.1	88.6	91.3	95.9	100.8	102.0	97.0	100.7	99.0	100.1	102.4
C12	106.8	103.5	109.0	116.9	115.0	120.3	109.0	112.6	111.0	103.5	98.7	96.0	91.1
C13	110.0	110.7	110.6	112.5	108.2	114.7	111.6	100.9	99.4	102.2	105.4	108.3	110.2
C14	97.0	99.4	96.4	97.8	94.8	94.0	96.0	92.0	89.0	91.5	91.4	96.5	94.3
C15	76.5	81.3	77.6	81.2	91.2	85.4	80.8	76.3	75.8	81.5	71.0	74.2	80.3
C16	102.3	98.7	90.4	98.8	92.7	97.1	99.4	104.1	105.4	101.5	93.6	97.2	91.2
C17	119.9	116.9	119.5	122.0	120.3	117.0	120.6	118.6	123.4	111.1	118.1	124.2	115.6
C18	105.1	96.7	103.9	105.8	109.8	106.6	112.2	114.8	114.1	107.8	106.4	117.1	112.3
C20	97.8	106.2	111.3	129.3	109.1	108.9	112.8	101.7	100.8	106.4	99.3	113.3	122.9
C21	136.6	121.4	132.2	140.2	138.5	152.2	153.6	135.9	153.3	150.5	143.7	142.6	148.1
C22	129.9	125.3	126.3	129.6	124.8	123.3	136.8	135.3	129.3	132.4	131.5	134.0	132.8
C23	115.8	115.9	111.7	112.6	115.4	119.2	116.1	117.6	120.5	117.6	127.4	129.5	129.8
C24	106.1	105.8	102.1	102.5	93.5	104.8	107.6	103.3	98.6	108.9	101.6	97.8	100.3
C25	119.4	113.0	130.4	118.4	124.7	121.2	126.6	128.8	111.5	112.6	121.5	118.3	124.7
C26	144.5	127.4	131.6	141.8	133.6	128.6	135.1	147.8	141.5	143.2	143.4	148.4	146.8
C27	124.8	121.0	126.0	131.9	130.6	128.3	139.3	140.1	144.7	140.5	145.2	135.9	145.9
C28	137.8	138.8	147.7	142.6	156.0	137.0	153.6	148.8	140.3	142.3	142.5	146.0	142.2
C29	134.4	129.7	141.7	151.8	149.0	153.0	155.1	159.3	155.4	151.7	147.5	153.6	156.9
C30	97.5	64.5	73.6	82.6	82.3	81.5	118.8	93.5	92.6	83.4	94.9	81.6	83.3
C31	125.7	132.2	124.0	125.1	124.7	117.5	126.6	130.3	119.6	130.8	120.4	120.7	126.1
C32	162.1	153.3	150.0	141.0	148.6	147.3	176.1	152.6	158.0	160.0	163.3	172.4	180.9
C33	88.0	89.9	93.4	85.4	105.6	77.4	98.0	91.7	97.8	83.8	93.8	91.6	94.9
D	102.4	100.0	104.1	107.0	107.0	107.2	112.5	107.7	107.7	110.8	108.0	106.5	105.5
D35	102.4	100.0	104.1	107.0	107.0	107.2	112.5	107.7	107.7	110.8	108.0	106.5	105.5



Table 4

Industrial Production Indices
(Working day adjusted, 2010 = 100)

NACE.BG - 2008	2012	2013	2014						2015						
	VII	VII	VII	VIII	IX	X	XI	XII	I	II	III	IV	V	VI	VII
B_TO_E36	110.8	109.7	109.9	102.4	107.6	113.3	115.6	113.5	106.2	104.2	109.6	107.1	105.0	111.4	113.6
B	112.7	94.5	93.9	96.1	95.4	111.8	107.7	110.7	98.1	94.6	89.6	92.2	93.9	96.5	97.3
B05	111.0	74.2	81.4	94.1	105.6	134.2	115.6	124.8	132.4	114.8	94.3	105.4	88.7	83.9	107.3
B07	96.5	101.6	96.3	94.7	86.7	98.1	102.1	103.0	84.6	89.2	86.8	83.4	94.0	99.0	87.2
B08	156.0	119.5	125.4	125.7	125.2	136.5	131.2	116.1	68.3	73.4	97.0	109.2	117.4	131.2	135.3
C	112.7	113.4	117.9	107.0	114.3	118.0	117.5	108.5	99.1	102.1	111.3	112.4	112.6	120.7	122.1
C10	96.2	95.6	91.3	92.6	96.1	99.7	99.5	96.0	78.8	83.5	85.8	88.6	86.0	90.6	86.5
C11	126.8	121.1	117.1	123.3	100.2	77.0	81.8	101.5	63.4	69.9	91.4	102.0	111.0	122.9	127.1
C12	160.2	137.9	128.2	104.7	121.5	112.3	108.0	119.0	79.1	89.0	115.7	102.9	103.6	104.6	104.7
C13	83.6	100.0	114.4	89.6	106.1	112.2	110.2	100.4	97.4	95.8	111.4	112.5	117.6	120.0	116.2
C14	107.0	110.9	108.2	103.0	91.3	93.7	95.0	93.1	98.7	91.2	85.1	84.7	83.9	105.2	108.2
C15	107.6	90.0	91.2	82.2	83.7	84.7	93.4	79.5	81.5	73.3	74.0	69.9	59.3	76.3	97.6
C16	117.0	108.6	114.3	101.7	97.5	111.3	101.7	89.1	79.3	86.6	102.4	99.6	92.2	106.2	101.6
C17	120.2	130.2	127.9	117.6	120.7	118.9	116.4	110.4	113.3	110.7	129.3	114.0	121.0	131.3	122.9
C18	86.8	104.2	104.7	93.5	106.9	113.6	120.3	121.1	96.0	103.2	111.7	105.7	103.9	119.5	111.8
C20	97.7	99.1	97.8	99.7	111.3	127.4	112.9	107.5	105.0	94.9	110.6	110.7	99.5	117.9	123.8
C21	133.1	124.8	128.1	108.2	132.5	151.9	143.1	157.1	137.0	134.5	160.1	158.3	140.6	148.0	139.0
C22	112.1	123.2	143.8	127.2	135.0	144.0	130.5	105.8	115.2	117.9	127.6	132.2	132.1	146.1	146.6
C23	116.9	116.4	125.5	123.3	120.5	126.1	125.2	101.0	81.8	96.7	117.5	123.6	140.3	140.6	142.0
C24	113.2	116.9	126.0	100.4	94.3	115.5	97.9	79.5	112.6	102.8	89.8	122.0	105.2	92.4	118.7
C25	97.3	115.3	124.7	110.7	134.4	124.0	134.8	136.7	94.3	114.8	111.2	110.0	118.3	125.1	131.2
C26	108.9	128.8	146.4	111.4	134.1	144.2	141.8	147.5	119.4	136.0	147.0	140.3	144.0	155.4	149.0
C27	136.6	126.1	130.7	105.6	127.0	144.7	144.5	120.1	130.5	132.7	149.9	141.5	142.1	141.2	154.3
C28	132.4	139.8	144.5	125.1	150.1	146.5	166.2	129.5	135.4	143.0	148.6	144.8	139.6	156.8	147.9
C29	86.0	111.2	134.9	108.6	143.7	163.5	164.9	135.1	150.4	153.4	163.8	155.8	146.3	163.0	157.3
C30	93.5	71.6	105.2	49.7	63.3	78.1	74.6	85.4	95.1	86.0	101.4	87.8	116.1	90.5	88.2
C31	117.6	117.1	129.3	136.4	128.2	138.3	135.8	120.0	106.7	115.5	115.4	126.3	117.0	124.6	130.1
C32	121.7	151.7	164.9	156.6	159.4	164.1	156.3	125.8	147.1	130.9	160.1	156.9	164.0	196.5	186.1
C33	78.7	70.9	86.4	90.0	98.1	90.9	122.9	105.2	69.5	78.4	97.0	74.2	85.9	92.2	93.8
D	104.3	106.4	94.0	90.4	92.5	101.9	116.3	134.1	134.5	118.2	117.0	100.7	88.3	91.2	96.2
D35	104.3	106.4	94.0	90.4	92.5	101.9	116.3	134.1	134.5	118.2	117.0	100.7	88.3	91.2	96.2