

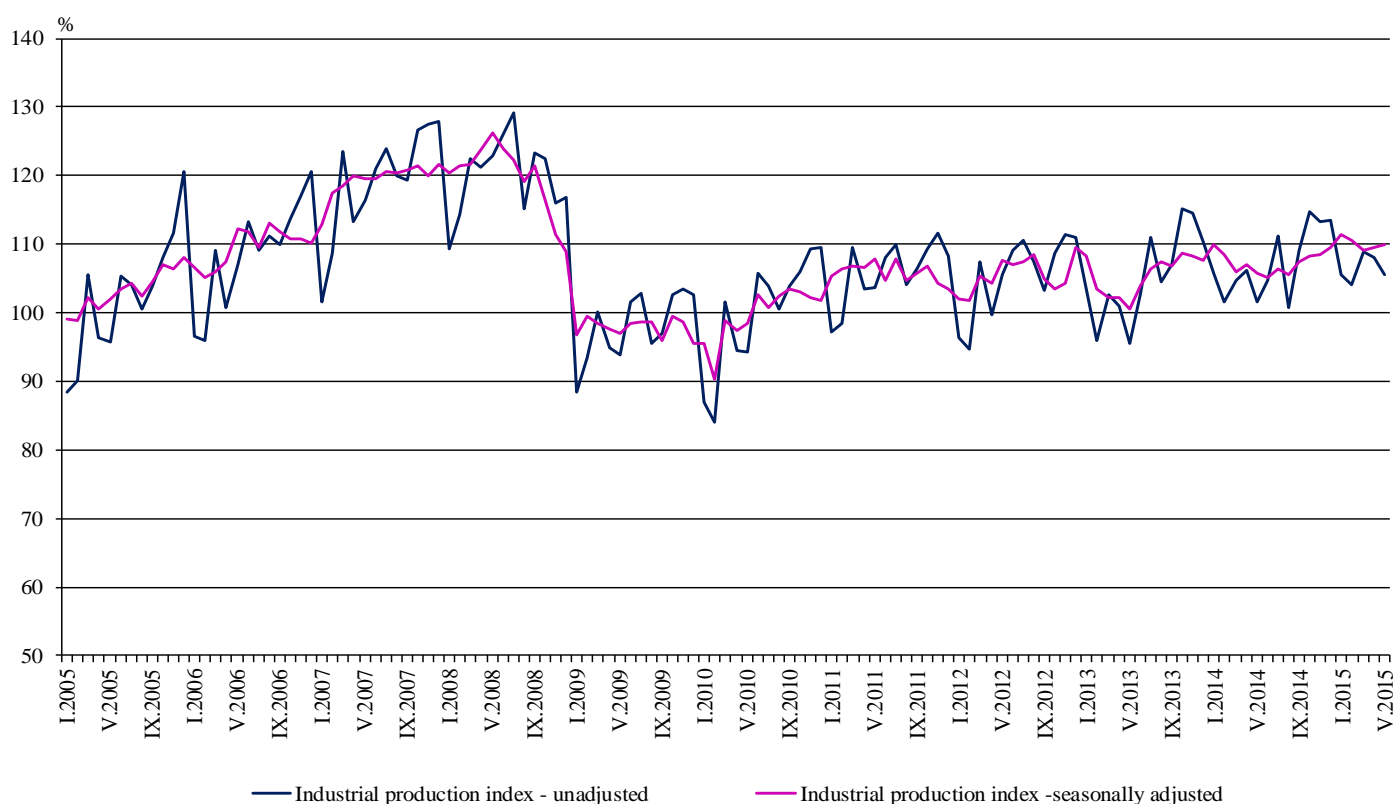


INDUSTRIAL PRODUCTION INDICES IN MAY 2015¹

According to the preliminary data the Industrial Production Index², seasonally adjusted³, increased by 0.4% in May 2015 as compared to April 2015.

In May 2015 working day adjusted⁴ Industrial Production Index rose by 3.9% in comparison with the same month of 2014.

Figure 1. Industrial Production Indices (2010 = 100)



¹May 2015 data are preliminary.

² Monthly Industrial Production and Industrial turnover indices measure changes in production and turnover values of industrial enterprises. This information can be used to assess the current economic development and for short-term forecasts. Indices do not measure the actual production level, it aims to measure the average change in value of production between two points of time. Indices are compiled on the base of information collected through representative sampling survey on industrial enterprises. The sample covers enterprises with annual turnover more than 97% of total turnover in industry.

Industrial production indices are calculated at constant base year that is to say they are weighted with the structure of the value added at factor costs in the base year.

³ Seasonal adjustment is a statistical method, which eliminates the seasonal component of time series.

⁴ Working day adjustment is an adjustment for variations caused by calendar effects, different number of calendar and working days in the months, national holidays and outliers (for example the presence of more non-working days in May could contribute to the decline in the production in some activities).

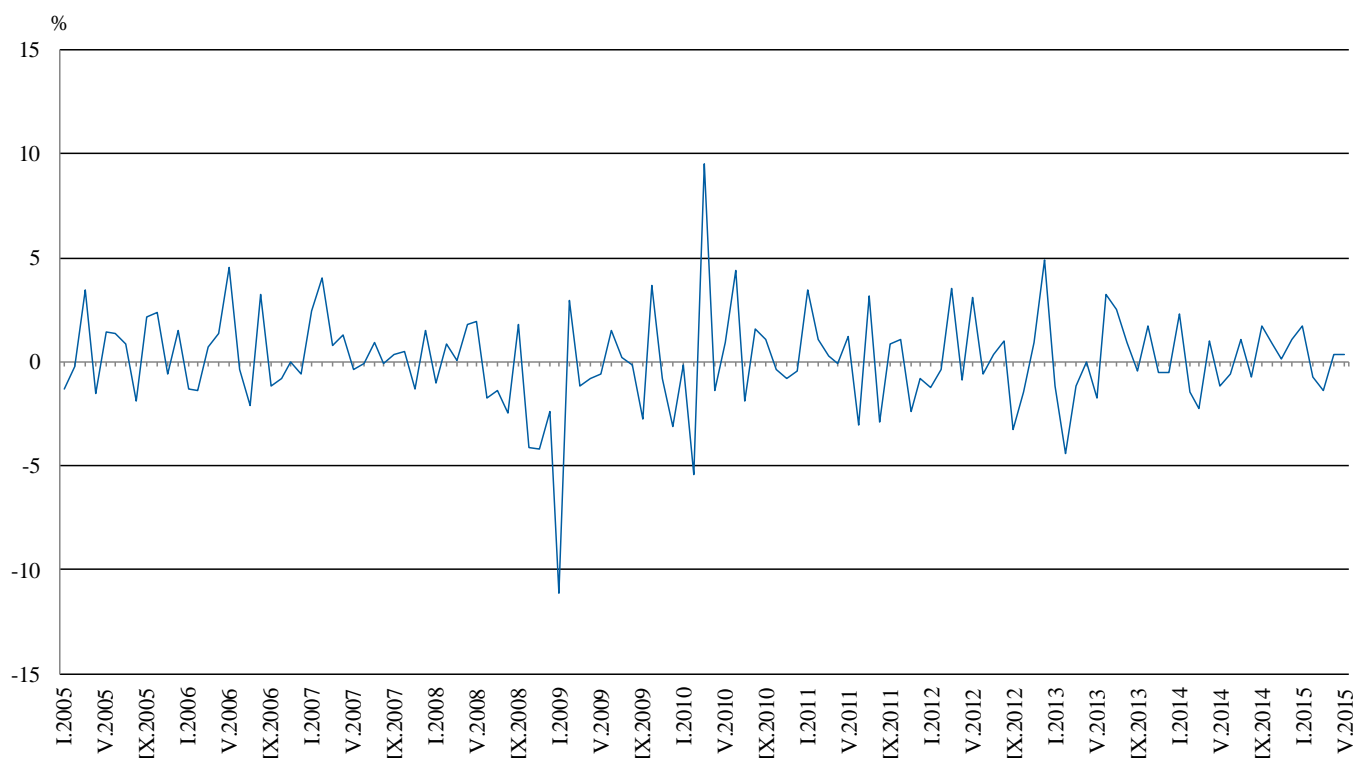


Monthly comparisons

In May 2015 as compared to April 2015, the seasonally adjusted Industrial Production Index increased in the manufacturing by 1.1% and in the mining and quarrying industry by 0.2%, while in the electricity, gas, steam and air conditioning supply a decrease by 1.8% was seen.

The most significant increases of production in the manufacturing were registered in the manufacture of other transport equipment by 13.3%, in the repair and installation of machinery and equipment by 12.0%, in the manufacture of fabricated metal products, except machinery and equipment by 7.9%, in the manufacture of other non-metallic mineral products by 6.7%, in the manufacture of paper and paper products by 5.6%. There were decreases in the manufacture of leather and related products by 12.6%, in the manufacture of chemicals and chemical products by 12.5%, in the manufacture of furniture by 7.8%, in the manufacture of wood and of products of wood and cork, except furniture; manufacture of articles of straw and plaiting materials by 7.4%.

Figure 2. Changes of Industrial Production Indices compared to the previous month (Seasonally adjusted)



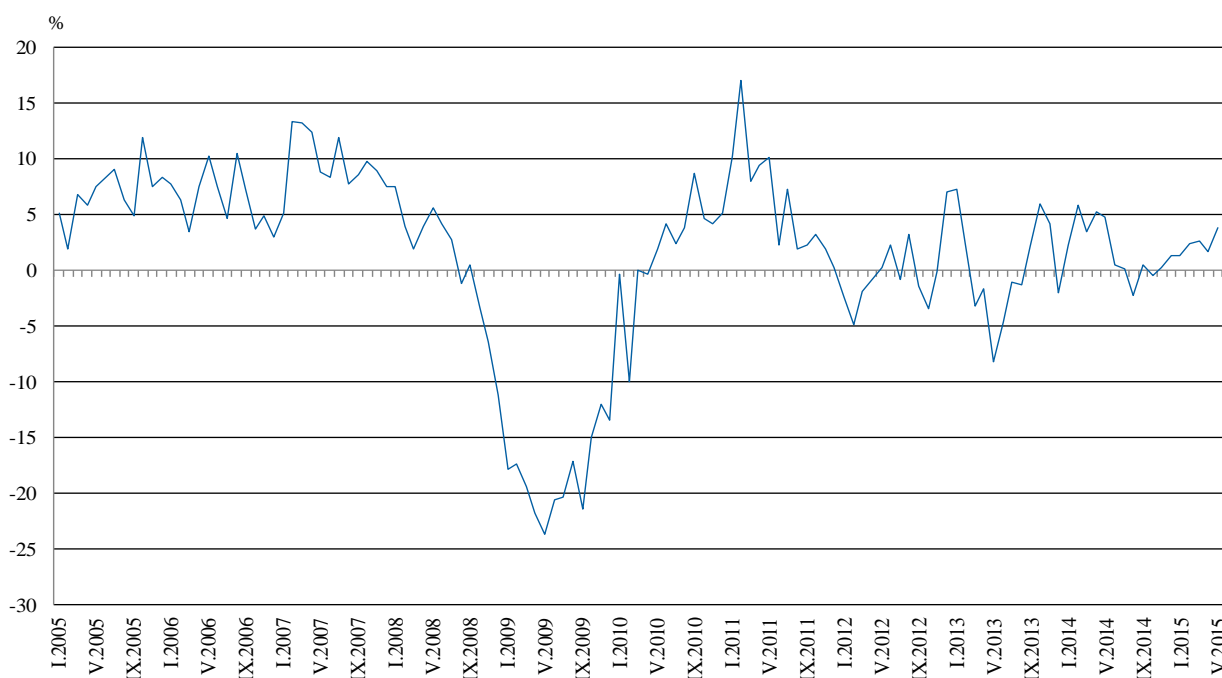


Annual comparisons

On annual basis in May 2015 Industrial Production Index calculated from working day adjusted data increased in the electricity, gas, steam and air conditioning supply by 5.6%, in the manufacturing by 4.0% and in the mining and quarrying industry by 0.7%.

In the manufacturing, the more significant increases compared to the same month of the previous year were seen in the manufacture of other transport equipment by 30.9%, in the repair and installation of machinery and equipment by 19.2%, in the manufacture of electrical equipment by 19.1%, in the manufacture of fabricated metal products, except machinery and equipment by 17.6%, in the manufacture of motor vehicles, trailers and semi-trailers by 12.9%. Decreases were registered in the manufacture of chemicals and chemical products by 13.1%, in the manufacture of wearing apparel by 11.1%, in the manufacture of wood and of products of wood and cork, except furniture; manufacture of articles of straw and plaiting materials by 7.7%, in the manufacture of tobacco products by 7.6%.

Figure 3. Changes of Industrial Production Indices compared to the same month of the previous year (Working day adjusted)



The final data on Industrial Production and Turnover Indices for April 2015 can be found on the NSI website: <http://www.nsi.bg/en>.



Annex

Table 1

Changes of Industrial Production Indices compared to the previous month¹

(Per cent)

Economic Activities	NACE.BG - 2008	2014	2015				
		XII	I	II	III	IV	V
Industry	B_TO_E36	1.0	1.7	-0.7	-1.4	0.4	0.4
Mining and quarrying	B	3.1	0.7	1.4	-6.1	3.2	0.2
of which:							
Mining of coal and lignite	B05	2.4	12.3	-0.6	-9.1	12.7	-11.0
Mining of metal ores	B07	0.8	-17.9	5.4	-2.7	-3.9	11.4
Other mining and quarrying	B08	-1.5	-5.3	-2.2	2.5	1.1	1.3
Manufacturing	C	1.0	0.8	0.1	-1.1	-0.8	1.1
of which:							
Manufacture of food products	C10	-1.2	2.6	2.7	-9.7	5.2	-4.0
Manufacture of beverages	C11	4.9	5.2	1.1	-4.9	3.9	-0.5
Manufacture of tobacco products	C12	4.6	-9.4	3.4	-1.5	-6.8	-4.1
Manufacture of textiles	C13	6.0	-2.8	-9.5	-1.5	2.8	2.3
Manufacture of wearing apparel	C14	-0.8	2.1	-4.1	-3.3	2.8	-0.8
Manufacture of leather and related products	C15	-6.3	-5.5	-5.6	-0.7	7.5	-12.6
Manufacture of wood and of products of wood and cork, except furniture; manufacture of articles of straw and plaiting materials	C16	4.7	2.3	4.8	1.2	-3.8	-7.4
Manufacture of paper and paper products	C17	-2.8	3.1	-1.6	4.0	-9.9	5.6
Printing and reproduction of recorded media	C18	-2.9	5.2	2.4	-0.6	-5.5	-1.7
Manufacture of chemicals and chemical products	C20	-0.2	3.6	-9.9	-0.9	5.6	-12.5
Manufacture of basic pharmaceutical products and pharmaceutical preparations	C21	9.9	0.9	-11.5	12.9	-1.9	-4.1
Manufacture of rubber and plastic products	C22	-1.2	10.9	-1.1	-4.4	2.4	-1.1
Manufacture of other non-metallic mineral products	C23	3.3	-2.6	1.3	2.5	-2.5	6.7
Manufacture of basic metals	C24	12.1	2.7	-4.0	-4.5	10.4	-5.9
Manufacture of fabricated metal products, except machinery and equipment	C25	-2.8	4.4	1.7	-13.4	1.0	7.9
Manufacture of computer, electronic and optical products	C26	-3.7	5.1	9.4	-4.2	1.2	0.4
Manufacture of electrical equipment	C27	-1.7	8.6	0.6	3.3	-2.9	4.9
Manufacture of machinery and equipment n.e.c.	C28	-12.2	12.2	-3.2	-5.7	1.4	0.5
Manufacture of motor vehicles, trailers and semi-trailers	C29	2.7	1.4	2.7	-2.5	-2.4	-2.8
Manufacture of other transport equipment	C30	-1.0	45.8	-21.3	-0.9	-10.0	13.3
Manufacture of furniture	C31	-5.8	7.8	2.9	-8.2	9.4	-7.8
Other manufacturing	C32	-0.9	19.6	-13.3	3.6	1.2	1.8
Repair and installation of machinery and equipment	C32	-26.7	26.6	-6.5	6.7	-14.3	12.0
Electricity, gas, steam and air conditioning supply	D	0.2	5.0	-4.3	-0.1	2.9	-1.8
Electricity, gas, steam and air conditioning supply	D35	0.2	5.0	-4.3	-0.1	2.9	-1.8

¹ Seasonally adjusted.



Table 2

Changes of Industrial Production Indices compared to the same month of the previous year¹
(Per cent)

Economic Activities	NACE.BG - 2008	2014	2015				
		XII	I	II	III	IV	V
Industry	B_TO_E36	1.4	1.3	2.5	2.6	1.6	3.9
Mining and quarrying	B	-4.1	-10.4	5.9	3.3	-0.8	0.7
of which:							
Mining of coal and lignite	B05	-14.3	0.6	15.3	20.9	11.0	-7.6
Mining of metal ores	B07	0.1	-18.2	0.4	-5.0	-5.8	4.9
Other mining and quarrying	B08	31.5	2.6	4.8	2.7	-3.6	7.9
Manufacturing	C	5.5	5.2	3.4	4.1	0.4	4.0
of which:							
Manufacture of food products	C10	2.0	4.5	9.8	-4.7	-0.6	0.7
Manufacture of beverages	C11	-5.5	9.6	-1.0	-6.7	-1.3	6.2
Manufacture of tobacco products	C12	13.8	-8.5	-6.9	0.5	-11.9	-7.6
Manufacture of textiles	C13	18.9	5.0	-7.3	-13.1	-7.0	-3.3
Manufacture of wearing apparel	C14	-7.9	-5.8	-7.8	-14.6	-9.2	-11.1
Manufacture of leather and related products	C15	19.0	3.1	-2.2	0.4	9.3	-5.9
Manufacture of wood and of products of wood and cork, except furniture; manufacture of articles of straw and plaiting materials	C16	2.9	-11.0	-2.5	6.9	4.6	-7.7
Manufacture of paper and paper products	C17	-0.7	-2.7	-2.7	8.5	-7.2	0.8
Printing and reproduction of recorded media	C18	4.2	2.7	8.5	6.0	0.8	-1.7
Manufacture of chemicals and chemical products	C20	11.8	21.4	3.8	1.4	-2.2	-13.1
Manufacture of basic pharmaceutical products and pharmaceutical preparations	C21	18.5	10.6	-5.5	20.8	7.5	7.3
Manufacture of rubber and plastic products	C22	4.1	12.2	5.8	1.0	3.4	4.1
Manufacture of other non-metallic mineral products	C23	7.2	3.8	-4.1	7.2	-0.8	9.2
Manufacture of basic metals	C24	7.9	0.3	-1.0	-9.5	13.0	-2.1
Manufacture of fabricated metal products, except machinery and equipment	C25	24.9	10.5	12.7	5.4	-4.3	17.6
Manufacture of computer, electronic and optical products	C26	20.5	-4.0	17.3	2.9	12.8	8.0
Manufacture of electrical equipment	C27	9.7	11.7	9.4	17.9	9.8	19.1
Manufacture of machinery and equipment n.e.c.	C28	-8.5	5.7	7.5	2.3	-4.6	4.5
Manufacture of motor vehicles, trailers and semi-trailers	C29	50.6	14.0	22.4	17.4	16.8	12.9
Manufacture of other transport equipment	C30	6.1	76.2	11.1	12.1	-22.5	30.9
Manufacture of furniture	C31	-1.5	1.2	6.7	-2.3	8.8	-3.0
Other manufacturing	C32	10.0	19.0	-0.5	-1.3	-0.2	21.7
Repair and installation of machinery and equipment	C33	-7.0	19.7	11.6	26.7	5.7	19.2
Electricity, gas, steam and air conditioning supply	D	-4.5	-3.4	-1.2	-0.5	7.3	5.6
Electricity, gas, steam and air conditioning supply	D35	-4.5	-3.4	-1.2	-0.5	7.3	5.6

¹ Working day adjusted.

Table 3

Industrial Production Indices
(Seasonally adjusted, 2010 = 100)

NACE.BG - 2008	2014								2015				
	V	VI	VII	VIII	IX	X	XI	XII	I	II	III	IV	V
B_TO_E36	105.8	105.2	106.3	105.6	107.4	108.3	108.4	109.6	111.4	110.6	109.1	109.5	109.9
B	98.9	96.3	94.9	97.4	93.3	95.7	97.5	100.5	101.2	102.6	96.4	99.4	99.6
B05	111.8	89.0	92.3	98.2	100.6	105.2	101.6	104.0	116.8	116.1	105.6	119.0	105.9
B07	88.6	101.4	96.3	94.7	86.7	98.1	102.1	103.0	84.6	89.2	86.8	83.4	92.9
B08	103.2	104.2	111.4	112.6	112.3	115.9	115.9	114.2	108.1	105.7	108.4	109.6	111.1
C	108.1	107.8	110.0	109.2	111.3	111.3	111.3	112.5	113.4	113.5	112.2	111.3	112.6
C10	87.4	88.2	89.9	89.8	88.9	90.6	92.9	91.8	94.2	96.8	87.4	91.9	88.2
C11	94.8	93.8	95.2	97.9	92.1	88.6	91.3	95.9	100.8	102.0	97.0	100.7	100.2
C12	101.6	88.9	106.8	103.5	109.0	116.9	115.0	120.3	109.0	112.6	111.0	103.5	99.3
C13	108.1	103.2	110.0	110.7	110.6	112.5	108.2	114.7	111.6	100.9	99.4	102.2	104.6
C14	102.2	97.5	97.0	99.4	96.4	97.8	94.8	94.0	96.0	92.0	89.0	91.5	90.8
C15	73.7	75.3	76.5	81.3	77.6	81.2	91.2	85.4	80.8	76.3	75.8	81.5	71.2
C16	100.1	98.2	102.3	98.7	90.4	98.8	92.7	97.1	99.4	104.1	105.4	101.5	93.9
C17	116.2	117.8	119.9	116.9	119.5	122.0	120.3	117.0	120.6	118.6	123.4	111.1	117.3
C18	106.8	103.7	105.1	96.7	103.9	105.8	109.8	106.6	112.2	114.8	114.1	107.8	106.0
C20	106.3	105.1	97.8	106.2	111.3	129.3	109.1	108.9	112.8	101.7	100.8	106.4	93.1
C21	132.6	129.9	136.6	121.4	132.2	140.2	138.5	152.2	153.6	135.9	153.3	150.5	144.3
C22	125.1	127.9	129.9	125.3	126.3	129.6	124.8	123.3	136.8	135.3	129.3	132.4	130.9
C23	116.4	107.8	115.8	115.9	111.7	112.6	115.4	119.2	116.1	117.6	120.5	117.6	125.4
C24	103.0	106.3	106.1	105.8	102.1	102.5	93.5	104.8	107.6	103.3	98.6	108.9	102.4
C25	103.4	111.8	119.4	113.0	130.4	118.4	124.7	121.2	126.6	128.8	111.5	112.6	121.5
C26	133.3	128.2	144.5	127.4	131.6	141.8	133.6	128.6	135.1	147.8	141.5	143.2	143.8
C27	125.8	123.0	124.8	121.0	126.0	131.9	130.6	128.3	139.3	140.1	144.7	140.5	147.3
C28	135.7	135.4	137.8	138.8	147.7	142.6	156.0	137.0	153.6	148.8	140.3	142.3	142.9
C29	128.8	132.0	134.4	129.7	141.7	151.8	149.0	153.0	155.1	159.3	155.4	151.7	147.5
C30	74.4	74.4	97.5	64.5	73.6	82.6	82.3	81.5	118.8	93.5	92.6	83.4	94.5
C31	123.0	121.3	125.7	132.2	124.0	125.1	124.7	117.5	126.6	130.3	119.6	130.8	120.7
C32	134.0	146.1	162.1	153.3	150.0	141.0	148.6	147.3	176.1	152.6	158.0	160.0	162.8
C33	79.1	84.5	88.0	89.9	93.4	85.4	105.6	77.4	98.0	91.7	97.8	83.8	93.9
D	103.7	103.3	102.4	100.0	104.1	107.0	107.0	107.2	112.5	107.7	107.7	110.8	108.8
D35	103.7	103.3	102.4	100.0	104.1	107.0	107.0	107.2	112.5	107.7	107.7	110.8	108.8



Table 4

Industrial Production Indices
(Working day adjusted, 2010 = 100)

NACE.BG - 2008	2012	2013	2014								2015				
	V	V	V	VI	VII	VIII	IX	X	XI	XII	I	II	III	IV	V
B_TO_E36	104.9	96.4	101.0	105.3	109.9	102.4	107.6	113.3	115.6	113.5	106.2	104.2	109.6	107.1	104.9
B	98.4	83.5	92.6	91.1	93.9	96.1	95.4	111.8	107.7	110.7	98.1	94.6	89.6	92.2	93.3
B05	105.7	43.2	95.9	66.0	81.4	94.1	105.6	134.2	115.6	124.8	132.4	114.8	94.3	105.4	88.7
B07	83.0	98.8	88.6	101.4	96.3	94.7	86.7	98.1	102.1	103.0	84.6	89.2	86.8	83.4	92.9
B08	105.1	124.0	108.8	113.6	125.4	125.7	125.2	136.5	131.2	116.1	68.3	73.4	97.0	109.2	117.4
C	111.7	104.4	108.2	113.2	117.9	107.0	114.3	118.0	117.5	108.5	99.1	102.1	111.3	112.4	112.5
C10	94.4	85.8	85.6	90.6	91.3	92.6	96.1	99.7	99.5	96.0	78.8	83.5	85.8	88.6	86.2
C11	112.1	119.6	106.0	115.3	117.1	123.3	100.2	77.0	81.8	101.5	63.4	69.9	91.4	102.0	112.5
C12	147.1	136.5	112.1	103.5	128.2	104.7	121.5	112.3	108.0	119.0	79.1	89.0	115.7	102.9	103.6
C13	97.0	110.8	121.5	114.2	114.4	89.6	106.1	112.2	110.2	100.4	97.4	95.8	111.4	112.5	117.5
C14	85.7	86.9	95.9	101.7	108.2	103.0	91.3	93.7	95.0	93.1	98.7	91.2	85.1	84.7	85.3
C15	81.4	65.3	63.0	78.9	91.2	82.2	83.7	84.7	93.4	79.5	81.5	73.3	74.0	69.9	59.3
C16	112.3	96.0	100.4	107.3	114.3	101.7	97.5	111.3	101.7	89.1	79.3	86.6	102.4	99.6	92.6
C17	115.6	120.2	120.0	123.8	127.9	117.6	120.7	118.9	116.4	110.4	113.3	110.7	129.3	114.0	120.9
C18	89.4	107.2	105.6	104.5	104.7	93.5	106.9	113.6	120.3	121.1	96.0	103.2	111.7	105.7	103.9
C20	114.2	104.0	107.1	109.2	97.8	99.7	111.3	127.4	112.9	107.5	105.0	94.9	110.6	110.7	93.1
C21	125.0	135.9	131.1	137.9	128.1	108.2	132.5	151.9	143.1	157.1	137.0	134.5	160.1	158.3	140.7
C22	108.3	110.5	126.4	139.1	143.8	127.2	135.0	144.0	130.5	105.8	115.2	117.9	127.6	132.2	131.5
C23	114.2	120.7	126.7	115.6	125.5	123.3	120.5	126.1	125.2	101.0	81.8	96.7	117.5	123.6	138.4
C24	100.1	101.5	107.5	103.2	126.0	100.4	94.3	115.5	97.9	79.5	112.6	102.8	89.8	122.0	105.2
C25	114.6	98.1	100.6	118.9	124.7	110.7	134.4	124.0	134.8	136.7	94.3	114.8	111.2	110.0	118.3
C26	136.5	122.5	133.8	133.7	146.4	111.4	134.1	144.2	141.8	147.5	119.4	136.0	147.0	140.3	144.5
C27	129.7	107.9	119.3	132.3	130.7	105.6	127.0	144.7	144.5	120.1	130.5	132.7	149.9	141.5	142.1
C28	133.3	130.2	134.4	145.2	144.5	125.1	150.1	146.5	166.2	129.5	135.4	143.0	148.6	144.8	140.4
C29	85.9	94.0	129.5	140.8	134.9	108.6	143.7	163.5	164.9	135.1	150.4	153.4	163.8	155.8	146.3
C30	120.8	79.5	87.7	85.3	105.2	49.7	63.3	78.1	74.6	85.4	95.1	86.0	101.4	87.8	114.8
C31	117.4	110.9	120.6	126.6	129.3	136.4	128.2	138.3	135.8	120.0	106.7	115.5	115.4	126.3	116.9
C32	137.3	139.1	134.7	165.8	164.9	156.6	159.4	164.1	156.3	125.8	147.1	130.9	160.1	156.9	163.9
C33	92.5	68.7	72.0	85.1	86.4	90.0	98.1	90.9	122.9	105.2	69.5	78.4	97.0	74.2	85.9
D	86.6	77.9	84.3	88.4	94.0	90.4	92.5	101.9	116.3	134.1	134.5	118.2	117.0	100.7	89.0
D35	86.6	77.9	84.3	88.4	94.0	90.4	92.5	101.9	116.3	134.1	134.5	118.2	117.0	100.7	89.0