

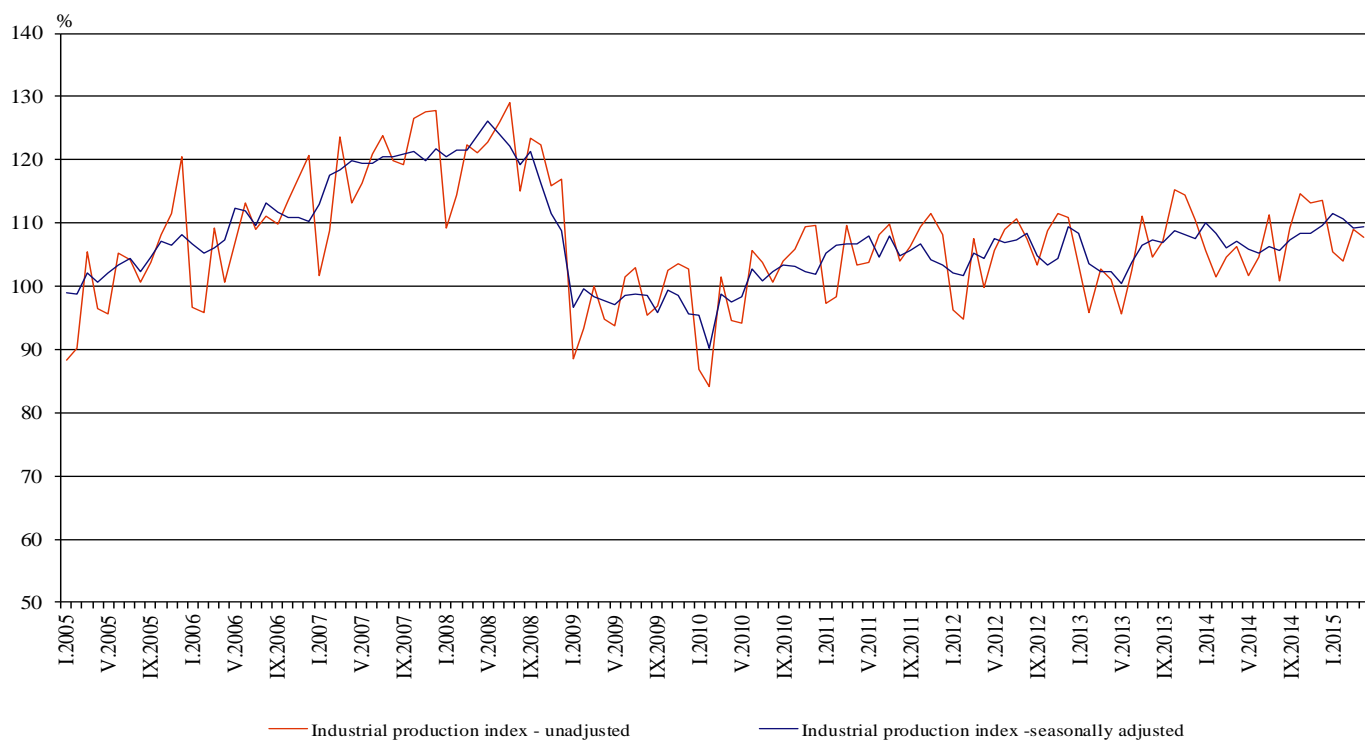


INDUSTRIAL PRODUCTION INDICES IN APRIL 2015¹

According to the preliminary data the Industrial Production Index², seasonally adjusted³, increased by 0.2% in April 2015 as compared to March 2015.

In April 2015 working day adjusted⁴ Industrial Production Index rose by 1.5% in comparison with the same month of 2014.

Figure 1. Industrial Production Indices (2010 = 100)



¹April 2015 data are preliminary.

² Monthly Industrial Production and Industrial turnover indices measure changes in production and turnover values of industrial enterprises. This information can be used to assess the current economic development and for short-term forecasts. Indices do not measure the actual production level, it aims to measure the average change in value of production between two points of time. Indices are compiled on the base of information collected through representative sampling survey on industrial enterprises. The sample covers enterprises with annual turnover more than 97% of total turnover in industry.

Industrial production indices are calculated at constant base year that is to say they are weighted with the structure of the value added at factor costs in the base year.

³ Seasonal adjustment is a statistical method, which eliminates the seasonal component of time series.

⁴ Working day adjustment is an adjustment for variations caused by calendar effects, different number of calendar and working days in the months, national holidays and outliers (for example the presence of more non-working days in May could contribute to the decline in the production in some activities).

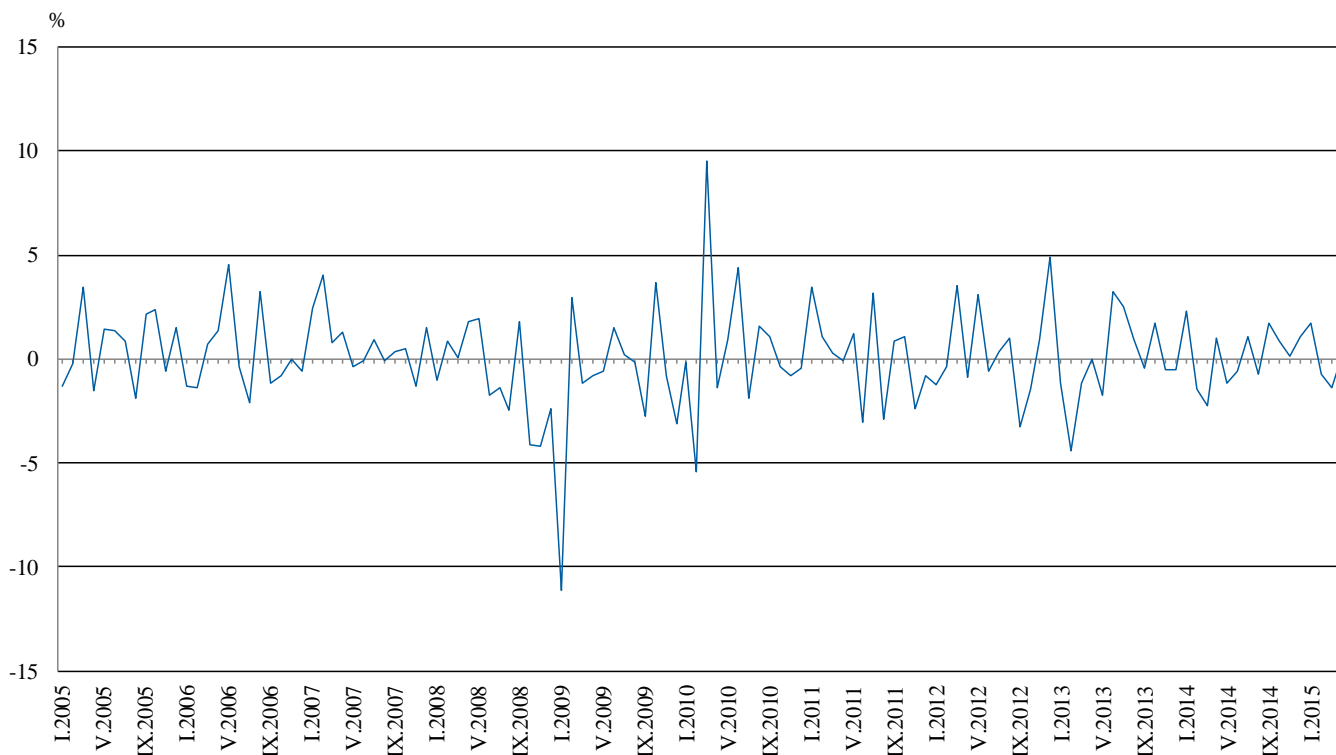


Monthly comparisons

In April 2015 as compared to March 2015, the seasonally adjusted Industrial Production Index increased in the mining and quarrying industry by 3.1% and in the electricity, gas, steam and air conditioning supply by 2.6%, while in the manufacturing a decrease by 1.0% was seen.

The most significant decreases of production in the manufacturing were registered in the manufacture of other transport equipment by 10.6%, in the repair and installation of machinery and equipment by 10.3%, in the manufacture of paper and paper products by 10.1%, in the manufacture of tobacco products by 6.1%, in the printing and reproduction of recorded media by 5.3%. There were increases in the manufacture of basic metals by 10.8%, in the manufacture of furniture by 9.1%, in the manufacture of leather and related products by 8.1%, in the manufacture of chemicals and chemical products by 5.7%.

Figure 2. Changes of Industrial Production Indices compared to the previous month (Seasonally adjusted)



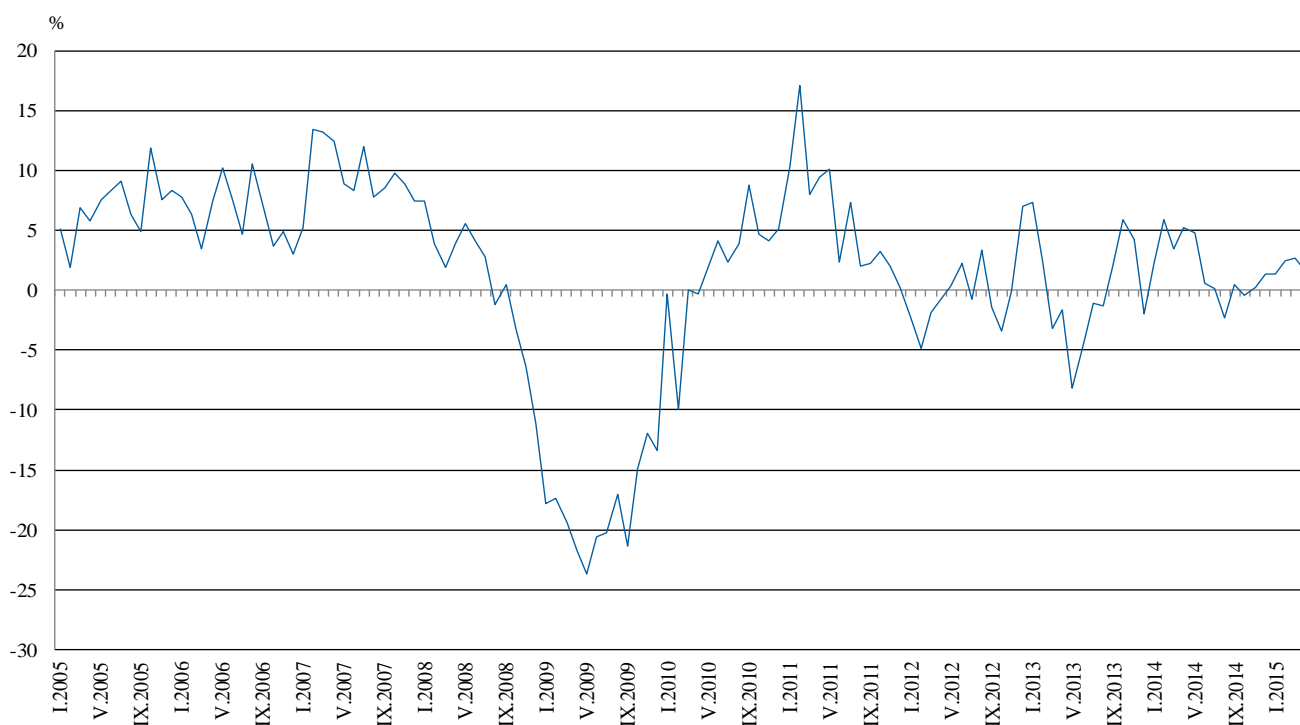


Annual comparisons

On annual basis in April 2015 Industrial Production Index calculated from working day adjusted data increased in the electricity, gas, steam and air conditioning supply by 6.8% and in the manufacturing by 0.3%, while in the mining and quarrying industry a decrease by 0.8% was seen.

In the manufacturing, the more significant increases compared to the same month of the previous year were seen in the manufacture of motor vehicles, trailers and semi-trailers by 16.9%, in the manufacture of basic metals by 13.4%, in the manufacture of computer, electronic and optical products by 12.8%, in the repair and installation of machinery and equipment by 11.6%. Decreases were registered in the manufacture of other transport equipment by 22.5%, in the manufacture of tobacco products by 11.9%, in the manufacture of wearing apparel by 9.6%, in the manufacture of textiles by 6.9%.

Figure 3. Changes of Industrial Production Indices compared to the same month of the previous year (Working day adjusted)



The final data on Industrial Production and Turnover Indices for March 2015 can be found on the NSI website: <http://www.nsi.bg/en>.



Annex

Table 1
Changes of Industrial Production Indices compared to the previous month¹

(Per cent)

Economic Activities	NACE.BG - 2008	2014		2015			
		XI	XII	I	II	III	IV
Industry	B_TO_E36	0.2	1.0	1.7	-0.7	-1.4	0.2
Mining and quarrying	B	1.9	3.1	0.7	1.4	-6.1	3.1
of which:							
Mining of coal and lignite	B05	-3.4	2.4	12.3	-0.6	-9.1	13.0
Mining of metal ores	B07	4.1	0.8	-17.9	5.4	-2.7	-3.9
Other mining and quarrying	B08	-0.1	-1.5	-5.3	-2.2	2.5	0.6
Manufacturing	C	0.0	1.0	0.8	0.1	-1.1	-1.0
of which:							
Manufacture of food products	C10	2.6	-1.2	2.6	2.7	-9.7	4.9
Manufacture of beverages	C11	3.1	4.9	5.2	1.1	-4.9	3.9
Manufacture of tobacco products	C12	-1.6	4.6	-9.4	3.4	-1.5	-6.1
Manufacture of textiles	C13	-3.9	6.0	-2.8	-9.5	-1.5	2.4
Manufacture of wearing apparel	C14	-3.1	-0.8	2.1	-4.1	-3.3	2.4
Manufacture of leather and related products	C15	12.3	-6.3	-5.5	-5.6	-0.7	8.1
Manufacture of wood and of products of wood and cork, except furniture; manufacture of articles of straw and plaiting materials	C16	-6.1	4.7	2.3	4.8	1.2	-3.4
Manufacture of paper and paper products	C17	-1.4	-2.8	3.1	-1.6	4.0	-10.1
Printing and reproduction of recorded media	C18	3.8	-2.9	5.2	2.4	-0.6	-5.3
Manufacture of chemicals and chemical products	C20	-15.6	-0.2	3.6	-9.9	-0.9	5.7
Manufacture of basic pharmaceutical products and pharmaceutical preparations	C21	-1.2	9.9	0.9	-11.5	12.9	-1.7
Manufacture of rubber and plastic products	C22	-3.7	-1.2	10.9	-1.1	-4.4	2.4
Manufacture of other non-metallic mineral products	C23	2.4	3.3	-2.6	1.3	2.5	-2.9
Manufacture of basic metals	C24	-8.8	12.1	2.7	-4.0	-4.5	10.8
Manufacture of fabricated metal products, except machinery and equipment	C25	5.3	-2.8	4.4	1.7	-13.4	0.3
Manufacture of computer, electronic and optical products	C26	-5.8	-3.7	5.1	9.4	-4.2	1.1
Manufacture of electrical equipment	C27	-1.0	-1.7	8.6	0.6	3.3	-3.5
Manufacture of machinery and equipment n.e.c.	C28	9.4	-12.2	12.2	-3.2	-5.7	0.6
Manufacture of motor vehicles, trailers and semi-trailers	C29	-1.8	2.7	1.4	2.7	-2.5	-1.7
Manufacture of other transport equipment	C30	-0.4	-1.0	45.8	-21.3	-0.9	-10.6
Manufacture of furniture	C31	-0.4	-5.8	7.8	2.9	-8.2	9.1
Other manufacturing	C32	5.4	-0.9	19.6	-13.3	3.6	1.2
Repair and installation of machinery and equipment	C32	23.6	-26.7	26.6	-6.5	6.7	-10.3
Electricity, gas, steam and air conditioning supply	D	0.0	0.2	5.0	-4.3	-0.1	2.6
Electricity, gas, steam and air conditioning supply	D35	0.0	0.2	5.0	-4.3	-0.1	2.6

¹ Seasonally adjusted.



Table 2
Changes of Industrial Production Indices compared to the same month of the previous year¹
(Per cent)

Economic Activities	NACE.BG - 2008	2014		2015			
		XI	XII	I	II	III	IV
Industry	B_TO_E36	0.3	1.4	1.3	2.5	2.6	1.5
Mining and quarrying	B	-9.7	-4.1	-10.4	5.9	3.3	-0.8
of which:							
Mining of coal and lignite	B05	-4.9	-14.3	0.6	15.3	20.9	10.9
Mining of metal ores	B07	-14.4	0.1	-18.2	0.4	-5.0	-5.8
Other mining and quarrying	B08	15.6	31.5	2.6	4.8	2.7	-4.0
Manufacturing	C	2.6	5.5	5.2	3.4	4.1	0.3
of which:							
Manufacture of food products	C10	-3.2	2.0	4.5	9.8	-4.7	-1.0
Manufacture of beverages	C11	-10.7	-5.5	9.6	-1.0	-6.7	-1.2
Manufacture of tobacco products	C12	18.7	13.8	-8.5	-6.9	0.5	-11.9
Manufacture of textiles	C13	10.1	18.9	5.0	-7.3	-13.1	-6.9
Manufacture of wearing apparel	C14	-11.4	-7.9	-5.8	-7.8	-14.6	-9.6
Manufacture of leather and related products	C15	24.0	19.0	3.1	-2.2	0.4	9.3
Manufacture of wood and of products of wood and cork, except furniture; manufacture of articles of straw and plaiting materials	C16	-11.3	2.9	-11.0	-2.5	6.9	4.4
Manufacture of paper and paper products	C17	-1.9	-0.7	-2.7	-2.7	8.5	-6.8
Printing and reproduction of recorded media	C18	18.4	4.2	2.7	8.5	6.0	0.8
Manufacture of chemicals and chemical products	C20	8.2	11.8	21.4	3.8	1.4	-2.3
Manufacture of basic pharmaceutical products and pharmaceutical preparations	C21	2.1	18.5	10.6	-5.5	20.8	7.4
Manufacture of rubber and plastic products	C22	6.9	4.1	12.2	5.8	1.0	3.2
Manufacture of other non-metallic mineral products	C23	2.9	7.2	3.8	-4.1	7.2	-0.7
Manufacture of basic metals	C24	-15.9	7.9	0.3	-1.0	-9.5	13.4
Manufacture of fabricated metal products, except machinery and equipment	C25	7.6	24.9	10.5	12.7	5.4	-5.0
Manufacture of computer, electronic and optical products	C26	1.1	20.5	-4.0	17.3	2.9	12.8
Manufacture of electrical equipment	C27	7.4	9.7	11.7	9.4	17.9	9.7
Manufacture of machinery and equipment n.e.c.	C28	14.4	-8.5	5.7	7.5	2.3	-5.6
Manufacture of motor vehicles, trailers and semi-trailers	C29	32.1	50.6	14.0	22.4	17.4	16.9
Manufacture of other transport equipment	C30	-4.0	6.1	76.2	11.1	12.1	-22.5
Manufacture of furniture	C31	1.0	-1.5	1.2	6.7	-2.3	7.9
Other manufacturing	C32	-7.6	10.0	19.0	-0.5	-1.3	-0.1
Repair and installation of machinery and equipment	C33	45.9	-7.0	19.7	11.6	26.7	11.6
Electricity, gas, steam and air conditioning supply	D	-1.7	-4.5	-3.4	-1.2	-0.5	6.8
Electricity, gas, steam and air conditioning supply	D35	-1.7	-4.5	-3.4	-1.2	-0.5	6.8

¹ Working day adjusted.



Table 3

**Industrial Production Indices
(Seasonally adjusted, 2010 = 100)**

NACE.BG - 2008	2014									2015			
	IV	V	VI	VII	VIII	IX	X	XI	XII	I	II	III	IV
B_TO_E36	107.0	105.8	105.2	106.3	105.6	107.4	108.3	108.4	109.6	111.4	110.6	109.1	109.3
B	100.3	98.9	96.3	94.9	97.4	93.3	95.7	97.5	100.5	101.2	102.6	96.4	99.4
B05	112.1	111.8	89.0	92.3	98.2	100.6	105.2	101.6	104.0	116.8	116.1	105.6	119.4
B07	88.6	88.6	101.4	96.3	94.7	86.7	98.1	102.1	103.0	84.6	89.2	86.8	83.4
B08	113.7	103.2	104.2	111.4	112.6	112.3	115.9	115.9	114.2	108.1	105.7	108.4	109.1
C	109.7	108.1	107.8	110.0	109.2	111.3	111.3	111.3	112.5	113.4	113.5	112.2	111.1
C10	92.5	87.4	88.2	89.9	89.8	88.9	90.6	92.9	91.8	94.2	96.8	87.4	91.6
C11	103.2	94.8	93.8	95.2	97.9	92.1	88.6	91.3	95.9	100.8	102.0	97.0	100.7
C12	114.3	101.6	88.9	106.8	103.5	109.0	116.9	115.0	120.3	109.0	112.6	111.0	104.2
C13	108.4	108.1	103.2	110.0	110.7	110.6	112.5	108.2	114.7	111.6	100.9	99.4	101.9
C14	98.4	102.2	97.5	97.0	99.4	96.4	97.8	94.8	94.0	96.0	92.0	89.0	91.1
C15	75.6	73.7	75.3	76.5	81.3	77.6	81.2	91.2	85.4	80.8	76.3	75.8	81.9
C16	97.6	100.1	98.2	102.3	98.7	90.4	98.8	92.7	97.1	99.4	104.1	105.4	101.8
C17	118.5	116.2	117.8	119.9	116.9	119.5	122.0	120.3	117.0	120.6	118.6	123.4	111.0
C18	106.6	106.8	103.7	105.1	96.7	103.9	105.8	109.8	106.6	112.2	114.8	114.1	108.0
C20	108.9	106.3	105.1	97.8	106.2	111.3	129.3	109.1	108.9	112.8	101.7	100.8	106.5
C21	142.5	132.6	129.9	136.6	121.4	132.2	140.2	138.5	152.2	153.6	135.9	153.3	150.8
C22	128.3	125.1	127.9	129.9	125.3	126.3	129.6	124.8	123.3	136.8	135.3	129.3	132.4
C23	117.6	116.4	107.8	115.8	115.9	111.7	112.6	115.4	119.2	116.1	117.6	120.5	117.0
C24	100.4	103.0	106.3	106.1	105.8	102.1	102.5	93.5	104.8	107.6	103.3	98.6	109.2
C25	115.9	103.4	111.8	119.4	113.0	130.4	118.4	124.7	121.2	126.6	128.8	111.5	111.8
C26	127.2	133.3	128.2	144.5	127.4	131.6	141.8	133.6	128.6	135.1	147.8	141.5	143.1
C27	127.1	125.8	123.0	124.8	121.0	126.0	131.9	130.6	128.3	139.3	140.1	144.7	139.6
C28	148.1	135.7	135.4	137.8	138.8	147.7	142.6	156.0	137.0	153.6	148.8	140.3	141.2
C29	129.4	128.8	132.0	134.4	129.7	141.7	151.8	149.0	153.0	155.1	159.3	155.4	152.7
C30	104.9	74.4	74.4	97.5	64.5	73.6	82.6	82.3	81.5	118.8	93.5	92.6	82.8
C31	122.0	123.0	121.3	125.7	132.2	124.0	125.1	124.7	117.5	126.6	130.3	119.6	130.5
C32	160.3	134.0	146.1	162.1	153.3	150.0	141.0	148.6	147.3	176.1	152.6	158.0	160.0
C33	77.8	79.1	84.5	88.0	89.9	93.4	85.4	105.6	77.4	98.0	91.7	97.8	87.7
D	103.9	103.7	103.3	102.4	100.0	104.1	107.0	107.0	107.2	112.5	107.7	107.7	110.4
D35	103.9	103.7	103.3	102.4	100.0	104.1	107.0	107.0	107.2	112.5	107.7	107.7	110.4



Table 4

Industrial Production Indices
(Working day adjusted, 2010 = 100)

NACE.BG - 2008	2012	2013	2014									2015			
	IV	IV	IV	V	VI	VII	VIII	IX	X	XI	XII	I	II	III	IV
B_TO_E36	101.8	100.1	105.4	101.0	105.3	109.9	102.4	107.6	113.3	115.6	113.5	106.2	104.2	109.6	106.9
B	93.0	82.9	92.9	92.6	91.1	93.9	96.1	95.4	111.8	107.7	110.7	98.1	94.6	89.6	92.1
B05	81.6	57.8	94.9	95.9	66.0	81.4	94.1	105.6	134.2	115.6	124.8	132.4	114.8	94.3	105.3
B07	97.9	91.2	88.6	88.6	101.4	96.3	94.7	86.7	98.1	102.1	103.0	84.6	89.2	86.8	83.4
B08	100.8	111.9	113.3	108.8	113.6	125.4	125.7	125.2	136.5	131.2	116.1	68.3	73.4	97.0	108.8
C	106.1	107.6	111.9	108.2	113.2	117.9	107.0	114.3	118.0	117.5	108.5	99.1	102.1	111.3	112.3
C10	91.0	87.6	89.1	85.6	90.6	91.3	92.6	96.1	99.7	99.5	96.0	78.8	83.5	85.8	88.2
C11	96.5	96.9	103.3	106.0	115.3	117.1	123.3	100.2	77.0	81.8	101.5	63.4	69.9	91.4	102.1
C12	105.7	141.2	116.8	112.1	103.5	128.2	104.7	121.5	112.3	108.0	119.0	79.1	89.0	115.7	102.9
C13	98.1	111.0	120.9	121.5	114.2	114.4	89.6	106.1	112.2	110.2	100.4	97.4	95.8	111.4	112.5
C14	87.7	98.5	93.3	95.9	101.7	108.2	103.0	91.3	93.7	95.0	93.1	98.7	91.2	85.1	84.3
C15	66.4	71.5	63.9	63.0	78.9	91.2	82.2	83.7	84.7	93.4	79.5	81.5	73.3	74.0	69.9
C16	96.7	103.8	95.2	100.4	107.3	114.3	101.7	97.5	111.3	101.7	89.1	79.3	86.6	102.4	99.4
C17	113.4	125.9	122.9	120.0	123.8	127.9	117.6	120.7	118.9	116.4	110.4	113.3	110.7	129.3	114.5
C18	86.1	111.9	104.8	105.6	104.5	104.7	93.5	106.9	113.6	120.3	121.1	96.0	103.2	111.7	105.6
C20	94.3	101.8	113.2	107.1	109.2	97.8	99.7	111.3	127.4	112.9	107.5	105.0	94.9	110.6	110.6
C21	122.9	135.6	147.2	131.1	137.9	128.1	108.2	132.5	151.9	143.1	157.1	137.0	134.5	160.1	158.2
C22	101.2	112.9	127.9	126.4	139.1	143.8	127.2	135.0	144.0	130.5	105.8	115.2	117.9	127.6	132.0
C23	114.5	119.7	124.6	126.7	115.6	125.5	123.3	120.5	126.1	125.2	101.0	81.8	96.7	117.5	123.7
C24	123.6	104.6	108.0	107.5	103.2	126.0	100.4	94.3	115.5	97.9	79.5	112.6	102.8	89.8	122.5
C25	97.1	99.0	115.0	100.6	118.9	124.7	110.7	134.4	124.0	134.8	136.7	94.3	114.8	111.2	109.2
C26	130.5	129.9	124.4	133.8	133.7	146.4	111.4	134.1	144.2	141.8	147.5	119.4	136.0	147.0	140.3
C27	127.9	122.7	128.9	119.3	132.3	130.7	105.6	127.0	144.7	144.5	120.1	130.5	132.7	149.9	141.4
C28	125.1	137.5	151.7	134.4	145.2	144.5	125.1	150.1	146.5	166.2	129.5	135.4	143.0	148.6	143.1
C29	84.8	104.4	133.4	129.5	140.8	134.9	108.6	143.7	163.5	164.9	135.1	150.4	153.4	163.8	156.0
C30	109.2	78.6	113.3	87.7	85.3	105.2	49.7	63.3	78.1	74.6	85.4	95.1	86.0	101.4	87.8
C31	99.0	117.2	116.1	120.6	126.6	129.3	136.4	128.2	138.3	135.8	120.0	106.7	115.5	115.4	125.2
C32	122.1	138.8	157.2	134.7	165.8	164.9	156.6	159.4	164.1	156.3	125.8	147.1	130.9	160.1	157.0
C33	79.8	74.2	70.3	72.0	85.1	86.4	90.0	98.1	90.9	122.9	105.2	69.5	78.4	97.0	78.4
D	91.5	86.9	93.8	84.3	88.4	94.0	90.4	92.5	101.9	116.3	134.1	134.5	118.2	117.0	100.2
D35	91.5	86.9	93.8	84.3	88.4	94.0	90.4	92.5	101.9	116.3	134.1	134.5	118.2	117.0	100.2