

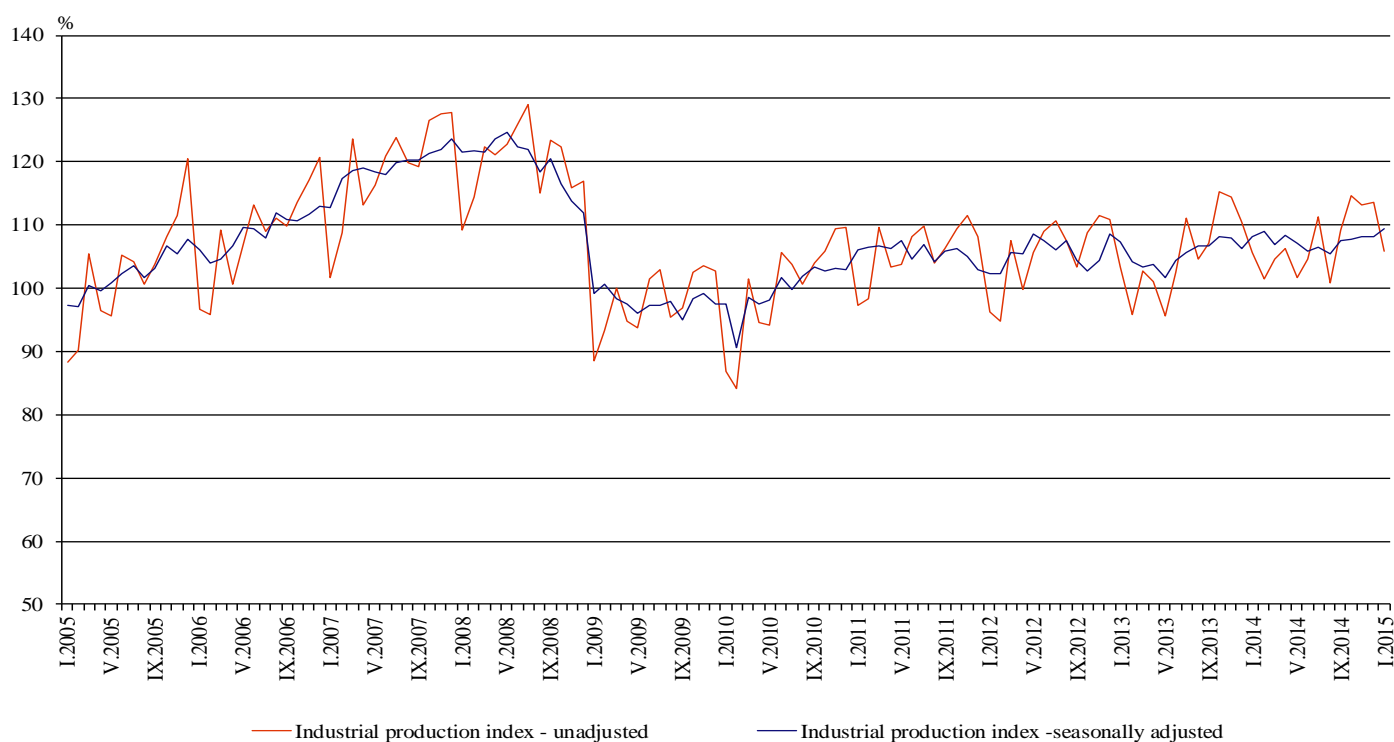


## INDUSTRIAL PRODUCTION INDICES IN JANUARY 2015<sup>1</sup>

According to the preliminary data the Industrial Production Index<sup>2</sup>, seasonally adjusted<sup>3</sup>, increased by 2.0% in January 2015 as compared to December 2014.

In January 2015 working day adjusted<sup>4</sup> Industrial Production Index rose by 1.7% in comparison with the same month of 2014.

**Figure 1. Industrial Production Indices (2010 = 100)**



<sup>1</sup> January 2015 data are preliminary.

<sup>2</sup> Monthly Industrial Production and Industrial turnover indices measure changes in production and turnover values of industrial enterprises. This information can be used to assess the current economic development and for short-term forecasts. Indices do not measure the actual production level, it aims to measure the average change in value of production between two points of time. Indices are compiled on the basis of information collected through representative sampling survey on industrial enterprises. The sample covers enterprises with annual turnover more than 97% of total turnover in industry.

Industrial production indices are calculated at constant base year that is to say they are weighted with the structure of the value added at factor costs in the base year.

<sup>3</sup> Seasonal adjustment is a statistical method, which eliminates the seasonal component of time series.

<sup>4</sup> Working day adjustment is an adjustment for variations caused by calendar effects, different number of calendar and working days in the months, national holidays and outliers (for example the presence of more non-working days in May could contribute to the decline in the production in some activities).

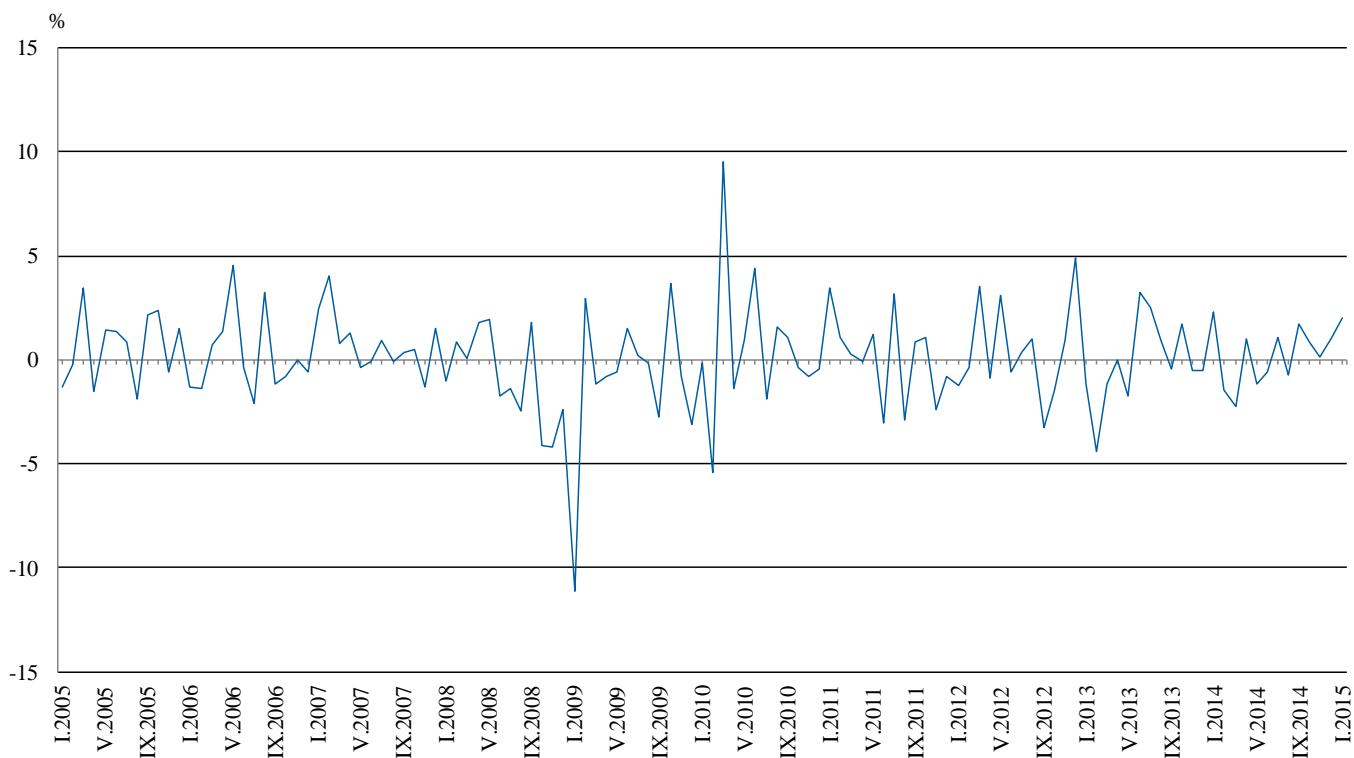


## Monthly comparisons

In January 2015 as compared to December 2014, the seasonally adjusted Industrial Production Index increased in the electricity, gas, steam and air conditioning supply by 6.5%, in the manufacturing by 0.8% and in the mining and quarrying industry by 0.3%.

The most significant increases of production in the manufacturing were registered in the manufacture of other transport equipment by 44.9%, in the repair and installation of machinery and equipment by 26.6%, in the manufacture of machinery and equipment n.e.c by 11.9%, in the manufacture of furniture by 11.2%, in the manufacture of rubber and plastic products by 10.4%. There were decreases in the manufacture of tobacco products by 9.6%, in the manufacture of leather and related products by 3.5%, in the manufacture of basic pharmaceutical products and pharmaceutical preparations by 2.4%, and in the manufacture of other non-metallic mineral products by 2.3%.

**Figure 2. Changes of Industrial Production Indices compared to the previous month (Seasonally adjusted)**



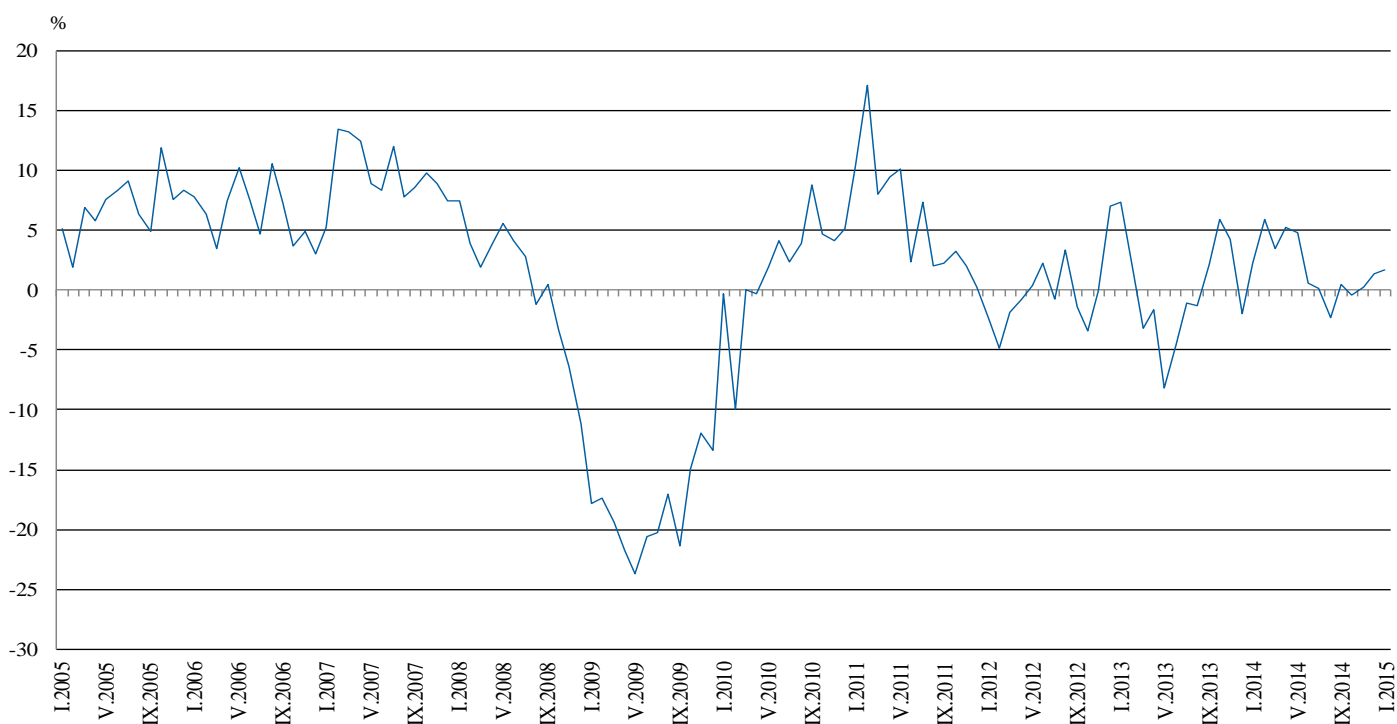


## Annual comparisons

On annual basis in January 2015 Industrial Production Index calculated from working day adjusted data increased in the manufacturing by 5.4% while decreases were seen in the mining and quarrying industry by 10.6% and in the electricity, gas, steam and air conditioning supply by 2.3%.

In the manufacturing, the more significant increases compared to the same month of the previous year were seen in the manufacture of motor vehicles, trailers and semi-trailers by 76.2%, in the manufacture of chemicals and chemical products by 20.3%, in the repair and installation of machinery and equipment by 19.8%, in the manufacture of fabricated metal products, except machinery and equipment 16.1%, in the manufacture of motor vehicles, trailers and semi-trailers by 14.0%, in the manufacture of rubber and plastic products by 11.9%, and in the manufacture of electrical equipment by 10.3%. Decreases were registered in the manufacture of wood and of products of wood and cork, except furniture; manufacture of articles of straw and plaiting materials by 11.3%, in the manufacture of wearing apparel by 7.7%, in the manufacture of paper and paper products and in the manufacture of computer, electronic and optical products by 3.4%.

**Figure 3. Changes of Industrial Production Indices compared to the same month of the previous year (Working day adjusted)**



The final data on Industrial Production and Turnover Indices for November 2014 can be found on the NSI website: <http://www.nsi.bg/en>.

Annex

**Table 1**  
**Changes of Industrial Production Indices compared to the previous month<sup>1</sup>**

Economic Activities	NACE.BG - 2008	2014					(Per cent)	
		VIII	IX	X	XI	XII	I	
<b>Industry</b>	<b>B_TO_E36</b>	<b>-0.7</b>	<b>1.7</b>	<b>0.8</b>	<b>0.2</b>	<b>1.0</b>	<b>2.0</b>	
<b>Mining and quarrying</b>	<b>B</b>	<b>2.7</b>	<b>-4.2</b>	<b>2.6</b>	<b>1.9</b>	<b>3.1</b>	<b>0.3</b>	
of which:								
Mining of coal and lignite	B05	6.3	2.5	4.5	-3.4	2.4	11.7	
Mining of metal ores	B07	-1.7	-8.4	13.2	4.1	0.8	-17.9	
Other mining and quarrying	B08	1.1	-0.3	3.3	-0.1	-1.5	-8.4	
<b>Manufacturing</b>	<b>C</b>	<b>-0.7</b>	<b>1.9</b>	<b>0.0</b>	<b>0.0</b>	<b>1.0</b>	<b>0.8</b>	
of which:								
Manufacture of food products	C10	-0.2	-1.0	1.9	2.6	-1.2	6.3	
Manufacture of beverages	C11	2.8	-5.9	-3.8	3.1	4.9	4.9	
Manufacture of tobacco products	C12	-3.1	5.4	7.2	-1.6	4.6	-9.6	
Manufacture of textiles	C13	0.7	-0.1	1.8	-3.9	6.0	-1.9	
Manufacture of wearing apparel	C14	2.5	-3.0	1.4	-3.1	-0.8	1.4	
Manufacture of leather and related products	C15	6.3	-4.6	4.7	12.3	-6.3	-3.5	
Manufacture of wood and of products of wood and cork, except furniture; manufacture of articles of straw and plaiting materials	C16	-3.5	-8.4	9.3	-6.1	4.7	1.8	
Manufacture of paper and paper products	C17	-2.5	2.2	2.1	-1.4	-2.8	2.7	
Printing and reproduction of recorded media	C18	-7.9	7.4	1.8	3.8	-2.9	3.6	
Manufacture of chemicals and chemical products	C20	8.7	4.8	16.2	-15.6	-0.2	2.9	
Manufacture of basic pharmaceutical products and pharmaceutical preparations	C21	-11.2	9.0	6.0	-1.2	9.9	-2.4	
Manufacture of rubber and plastic products	C22	-3.6	0.8	2.6	-3.7	-1.2	10.4	
Manufacture of other non-metallic mineral products	C23	0.1	-3.6	0.8	2.4	3.3	-2.3	
Manufacture of basic metals	C24	-0.3	-3.5	0.4	-8.8	12.1	-0.7	
Manufacture of fabricated metal products, except machinery and equipment	C25	-5.4	15.5	-9.2	5.3	-2.8	8.8	
Manufacture of computer, electronic and optical products	C26	-11.8	3.3	7.8	-5.8	-3.7	5.3	
Manufacture of electrical equipment	C27	-3.0	4.2	4.6	-1.0	-1.7	7.2	
Manufacture of machinery and equipment n.e.c.	C28	0.7	6.4	-3.5	9.4	-12.2	11.9	
Manufacture of motor vehicles, trailers and semi-trailers	C29	-3.5	9.3	7.1	-1.8	2.7	1.2	
Manufacture of other transport equipment	C30	-33.9	14.1	12.2	-0.4	-1.0	44.9	
Manufacture of furniture	C31	5.2	-6.2	0.9	-0.4	-5.8	11.2	
Other manufacturing	C32	-5.4	-2.2	-6.0	5.4	-0.9	22.8	
Repair and installation of machinery and equipment	C32	2.1	3.9	-8.6	23.6	-26.7	26.6	
<b>Electricity, gas, steam and air conditioning supply</b>	<b>D</b>	<b>-2.4</b>	<b>4.1</b>	<b>2.9</b>	<b>0.0</b>	<b>0.2</b>	<b>6.5</b>	
Electricity, gas, steam and air conditioning supply	D35	-2.4	4.1	2.9	0.0	0.2	6.5	

<sup>1</sup> Seasonally adjusted.



**Table 2**  
**Changes of Industrial Production Indices compared to the same month of the previous year<sup>1</sup>**  
(Per cent)

Economic Activities	NACE.BG - 2008	2014					2015
		VIII	IX	X	XI	XII	I
<b>Industry</b>	<b>B_TO_E36</b>	<b>-2.3</b>	<b>0.5</b>	<b>-0.5</b>	<b>0.3</b>	<b>1.4</b>	<b>1.7</b>
<b>Mining and quarrying</b>	<b>B</b>	<b>-5.5</b>	<b>-6.9</b>	<b>-16.9</b>	<b>-9.7</b>	<b>-4.1</b>	<b>-10.6</b>
of which:							
Mining of coal and lignite	B05	-8.8	-0.1	-9.2	-4.9	-14.3	0.6
Mining of metal ores	B07	-3.1	-12.3	-23.9	-14.4	0.1	-18.2
Other mining and quarrying	B08	-2.2	6.5	10.6	15.6	31.5	-1.6
<b>Manufacturing</b>	<b>C</b>	<b>2.3</b>	<b>5.3</b>	<b>3.2</b>	<b>2.6</b>	<b>5.5</b>	<b>5.4</b>
of which:							
Manufacture of food products	C10	4.7	-1.7	-2.2	-3.2	2.0	8.5
Manufacture of beverages	C11	-1.8	-13.5	-13.3	-10.7	-5.5	10.2
Manufacture of tobacco products	C12	-7.9	-4.1	20.1	18.7	13.8	-8.6
Manufacture of textiles	C13	7.9	6.1	12.1	10.1	18.9	4.4
Manufacture of wearing apparel	C14	0.6	-2.3	2.8	-11.4	-7.9	-7.7
Manufacture of leather and related products	C15	5.8	-2.0	3.3	24.0	19.0	5.2
Manufacture of wood and of products of wood and cork, except furniture; manufacture of articles of straw and plaiting materials	C16	4.5	-7.7	3.2	-11.3	2.9	-11.3
Manufacture of paper and paper products	C17	-0.6	2.8	2.0	-1.9	-0.7	-3.4
Printing and reproduction of recorded media	C18	-6.5	0.9	8.4	18.4	4.2	1.2
Manufacture of chemicals and chemical products	C20	13.0	29.9	33.9	8.2	11.8	20.3
Manufacture of basic pharmaceutical products and pharmaceutical preparations	C21	-15.4	-5.1	7.0	2.1	18.5	4.7
Manufacture of rubber and plastic products	C22	13.7	9.1	14.0	6.9	4.1	11.9
Manufacture of other non-metallic mineral products	C23	-0.3	-1.4	0.1	2.9	7.2	4.1
Manufacture of basic metals	C24	5.8	0.5	-2.4	-15.9	7.9	-4.7
Manufacture of fabricated metal products, except machinery and equipment	C25	3.2	27.0	-6.0	7.6	24.9	16.1
Manufacture of computer, electronic and optical products	C26	3.9	11.5	2.2	1.1	20.5	-3.4
Manufacture of electrical equipment	C27	-6.6	5.1	12.5	7.4	9.7	10.3
Manufacture of machinery and equipment n.e.c.	C28	6.4	9.6	2.8	14.4	-8.5	5.4
Manufacture of motor vehicles, trailers and semi-trailers	C29	25.5	27.7	40.1	32.1	50.6	14.0
Manufacture of other transport equipment	C30	-20.2	-0.5	-6.6	-4.0	6.1	76.2
Manufacture of furniture	C31	12.2	3.6	1.9	1.0	-1.5	5.8
Other manufacturing	C32	2.6	7.2	-10.8	-7.6	10.0	22.4
Repair and installation of machinery and equipment	C33	24.1	22.3	1.9	45.9	-7.0	19.8
<b>Electricity, gas, steam and air conditioning supply</b>	<b>D</b>	<b>-14.8</b>	<b>-10.7</b>	<b>-3.0</b>	<b>-1.7</b>	<b>-4.5</b>	<b>-2.3</b>
Electricity, gas, steam and air conditioning supply	D35	-14.8	-10.7	-3.0	-1.7	-4.5	-2.3

<sup>1</sup> Working day adjusted.

Table 3

**Industrial Production Indices**  
(Seasonally adjusted, 2010 = 100)

NACE.BG - 2008	2014												2015
	I	II	III	IV	V	VI	VII	VIII	IX	X	XI	XII	I
<b>B_TO_E36</b>	<b>110.0</b>	<b>108.4</b>	<b>106.0</b>	<b>107.0</b>	<b>105.8</b>	<b>105.2</b>	<b>106.3</b>	<b>105.6</b>	<b>107.4</b>	<b>108.3</b>	<b>108.4</b>	<b>109.6</b>	<b>111.7</b>
<b>B</b>	<b>113.0</b>	<b>97.4</b>	<b>92.7</b>	<b>100.3</b>	<b>98.9</b>	<b>96.3</b>	<b>94.9</b>	<b>97.4</b>	<b>93.3</b>	<b>95.7</b>	<b>97.5</b>	<b>100.5</b>	<b>100.8</b>
<b>B05</b>	116.5	104.0	87.3	112.1	111.8	89.0	92.3	98.2	100.6	105.2	101.6	104.0	116.1
<b>B07</b>	103.4	88.8	91.4	88.6	88.6	101.4	96.3	94.7	86.7	98.1	102.1	103.0	84.6
<b>B08</b>	106.1	100.1	105.4	113.7	103.2	104.2	111.4	112.6	112.3	115.9	115.9	114.2	104.6
<b>C</b>	<b>107.9</b>	<b>110.7</b>	<b>107.9</b>	<b>109.7</b>	<b>108.1</b>	<b>107.8</b>	<b>110.0</b>	<b>109.2</b>	<b>111.3</b>	<b>111.3</b>	<b>111.3</b>	<b>112.5</b>	<b>113.4</b>
<b>C10</b>	90.0	88.5	91.3	92.5	87.4	88.2	89.9	89.8	88.9	90.6	92.9	91.8	97.6
<b>C11</b>	91.6	105.9	103.3	103.2	94.8	93.8	95.2	97.9	92.1	88.6	91.3	95.9	100.6
<b>C12</b>	116.0	119.9	110.6	114.3	101.6	88.9	106.8	103.5	109.0	116.9	115.0	120.3	108.8
<b>C13</b>	107.9	106.9	111.9	108.4	108.1	103.2	110.0	110.7	110.6	112.5	108.2	114.7	112.6
<b>C14</b>	101.6	99.1	100.6	98.4	102.2	97.5	97.0	99.4	96.4	97.8	94.8	94.0	95.3
<b>C15</b>	78.4	76.9	74.2	75.6	73.7	75.3	76.5	81.3	77.6	81.2	91.2	85.4	82.4
<b>C16</b>	109.1	107.3	99.9	97.6	100.1	98.2	102.3	98.7	90.4	98.8	92.7	97.1	98.8
<b>C17</b>	124.0	120.6	115.0	118.5	116.2	117.8	119.9	116.9	119.5	122.0	120.3	117.0	120.1
<b>C18</b>	109.4	106.9	108.8	106.6	106.8	103.7	105.1	96.7	103.9	105.8	109.8	106.6	110.5
<b>C20</b>	93.1	97.5	98.9	108.9	106.3	105.1	97.8	106.2	111.3	129.3	109.1	108.9	112.1
<b>C21</b>	143.7	138.4	130.5	142.5	132.6	129.9	136.6	121.4	132.2	140.2	138.5	152.2	148.5
<b>C22</b>	122.2	129.5	127.0	128.3	125.1	127.9	129.9	125.3	126.3	129.6	124.8	123.3	136.2
<b>C23</b>	111.8	122.7	113.4	117.6	116.4	107.8	115.8	115.9	111.7	112.6	115.4	119.2	116.5
<b>C24</b>	110.3	106.2	104.0	100.4	103.0	106.3	106.1	105.8	102.1	102.5	93.5	104.8	104.0
<b>C25</b>	113.9	115.3	104.0	115.9	103.4	111.8	119.4	113.0	130.4	118.4	124.7	121.2	131.9
<b>C26</b>	140.1	127.5	137.8	127.2	133.3	128.2	144.5	127.4	131.6	141.8	133.6	128.6	135.4
<b>C27</b>	126.2	129.2	126.4	127.1	125.8	123.0	124.8	121.0	126.0	131.9	130.6	128.3	137.5
<b>C28</b>	146.2	139.2	135.2	148.1	135.7	135.4	137.8	138.8	147.7	142.6	156.0	137.0	153.3
<b>C29</b>	136.2	131.0	132.3	129.4	128.8	132.0	134.4	129.7	141.7	151.8	149.0	153.0	154.9
<b>C30</b>	70.5	86.7	85.5	104.9	74.4	74.4	97.5	64.5	73.6	82.6	82.3	81.5	118.1
<b>C31</b>	123.9	124.0	120.2	122.0	123.0	121.3	125.7	132.2	124.0	125.1	124.7	117.5	130.7
<b>C32</b>	148.2	152.4	160.0	160.3	134.0	146.1	162.1	153.3	150.0	141.0	148.6	147.3	180.8
<b>C33</b>	82.0	82.1	78.2	77.8	79.1	84.5	88.0	89.9	93.4	85.4	105.6	77.4	98.0
<b>D</b>	<b>117.5</b>	<b>108.7</b>	<b>107.6</b>	<b>103.9</b>	<b>103.7</b>	<b>103.3</b>	<b>102.4</b>	<b>100.0</b>	<b>104.1</b>	<b>107.0</b>	<b>107.0</b>	<b>107.2</b>	<b>114.2</b>
<b>D35</b>	117.5	108.7	107.6	103.9	103.7	103.3	102.4	100.0	104.1	107.0	107.0	107.2	114.2

Table 4

**Industrial Production Indices**  
(Working day adjusted, 2010 = 100)

NACE.BG - 2008	2012	2013	2014												2015
	I	I	I	II	III	IV	V	VI	VII	VIII	IX	X	XI	XII	I
<b>B_TO_E36</b>	<b>95.5</b>	<b>102.5</b>	<b>104.8</b>	<b>101.7</b>	<b>106.8</b>	<b>105.4</b>	<b>101.0</b>	<b>105.3</b>	<b>109.9</b>	<b>102.4</b>	<b>107.6</b>	<b>113.3</b>	<b>115.6</b>	<b>113.5</b>	<b>106.6</b>
<b>B</b>	<b>101.2</b>	<b>94.8</b>	<b>109.5</b>	<b>89.3</b>	<b>86.8</b>	<b>92.9</b>	<b>92.6</b>	<b>91.1</b>	<b>93.9</b>	<b>96.1</b>	<b>95.4</b>	<b>111.8</b>	<b>107.7</b>	<b>110.7</b>	<b>97.9</b>
<b>B05</b>	111.2	110.4	131.6	99.6	78.1	94.9	95.9	66.0	81.4	94.1	105.6	134.2	115.6	124.8	132.4
<b>B07</b>	96.8	89.9	103.4	88.8	91.4	88.6	88.6	101.4	96.3	94.7	86.7	98.1	102.1	103.0	84.6
<b>B08</b>	63.8	62.6	66.6	70.0	94.5	113.3	108.8	113.6	125.4	125.7	125.2	136.5	131.2	116.1	65.5
<b>C</b>	<b>87.9</b>	<b>92.9</b>	<b>94.2</b>	<b>98.7</b>	<b>107.0</b>	<b>111.9</b>	<b>108.2</b>	<b>113.2</b>	<b>117.9</b>	<b>107.0</b>	<b>114.3</b>	<b>118.0</b>	<b>117.5</b>	<b>108.5</b>	<b>99.3</b>
<b>C10</b>	76.2	77.7	75.4	76.1	90.1	89.1	85.6	90.6	91.3	92.6	96.1	99.7	99.5	96.0	81.8
<b>C11</b>	55.8	69.6	57.8	70.6	97.9	103.3	106.0	115.3	117.1	123.3	100.2	77.0	81.8	101.5	63.8
<b>C12</b>	95.4	89.3	86.4	95.6	115.1	116.8	112.1	103.5	128.2	104.7	121.5	112.3	108.0	119.0	78.9
<b>C13</b>	72.8	89.0	92.7	103.3	128.2	120.9	121.5	114.2	114.4	89.6	106.1	112.2	110.2	100.4	96.8
<b>C14</b>	96.3	100.6	104.7	98.9	99.7	93.3	95.9	101.7	108.2	103.0	91.3	93.7	95.0	93.1	96.6
<b>C15</b>	87.7	79.3	79.1	74.9	73.7	63.9	63.0	78.9	91.2	82.2	83.7	84.7	93.4	79.5	83.2
<b>C16</b>	76.0	79.7	89.0	88.8	95.8	95.2	100.4	107.3	114.3	101.7	97.5	111.3	101.7	89.1	79.0
<b>C17</b>	68.1	100.6	116.4	113.8	119.1	122.9	120.0	123.8	127.9	117.6	120.7	118.9	116.4	110.4	112.5
<b>C18</b>	76.6	79.9	93.4	95.1	105.4	104.8	105.6	104.5	104.7	93.5	106.9	113.6	120.3	121.1	94.5
<b>C20</b>	105.7	97.0	86.4	91.4	109.1	113.2	107.1	109.2	97.8	99.7	111.3	127.4	112.9	107.5	104.0
<b>C21</b>	86.9	109.7	123.9	142.3	132.6	147.2	131.1	137.9	128.1	108.2	132.5	151.9	143.1	157.1	129.7
<b>C22</b>	81.3	93.5	102.7	111.4	126.3	127.9	126.4	139.1	143.8	127.2	135.0	144.0	130.5	105.8	114.9
<b>C23</b>	76.4	83.3	78.8	100.8	109.6	124.6	126.7	115.6	125.5	123.3	120.5	126.1	125.2	101.0	82.1
<b>C24</b>	108.8	139.1	112.3	103.8	99.2	108.0	107.5	103.2	126.0	100.4	94.3	115.5	97.9	79.5	107.0
<b>C25</b>	72.8	81.3	85.3	101.9	105.5	115.0	100.6	118.9	124.7	110.7	134.4	124.0	134.8	136.7	99.0
<b>C26</b>	120.8	105.0	124.3	115.9	142.8	124.4	133.8	133.7	146.4	111.4	134.1	144.2	141.8	147.5	120.2
<b>C27</b>	94.9	112.4	116.8	121.4	127.1	128.9	119.3	132.3	130.7	105.6	127.0	144.7	144.5	120.1	128.8
<b>C28</b>	103.3	110.3	128.1	132.9	145.2	151.7	134.4	145.2	144.5	125.1	150.1	146.5	166.2	129.5	134.9
<b>C29</b>	73.9	89.5	131.9	125.3	139.5	133.4	129.5	140.8	134.9	108.6	143.7	163.5	164.9	135.1	150.3
<b>C30</b>	70.6	77.7	54.0	77.3	90.4	113.3	87.7	85.3	105.2	49.7	63.3	78.1	74.6	85.4	95.1
<b>C31</b>	88.0	104.6	105.5	108.3	118.2	116.1	120.6	126.6	129.3	136.4	128.2	138.3	135.8	120.0	111.6
<b>C32</b>	111.7	114.0	123.7	131.5	162.1	157.2	134.7	165.8	164.9	156.6	159.4	164.1	156.3	125.8	151.3
<b>C33</b>	61.8	58.3	58.1	70.3	76.6	70.3	72.0	85.1	86.4	90.0	98.1	90.9	122.9	105.2	69.6
<b>D</b>	<b>119.8</b>	<b>139.2</b>	<b>139.3</b>	<b>119.7</b>	<b>117.5</b>	<b>93.8</b>	<b>84.3</b>	<b>88.4</b>	<b>94.0</b>	<b>90.4</b>	<b>92.5</b>	<b>101.9</b>	<b>116.3</b>	<b>134.1</b>	<b>136.0</b>
<b>D35</b>	119.8	139.2	139.3	119.7	117.5	93.8	84.3	88.4	94.0	90.4	92.5	101.9	116.3	134.1	136.0